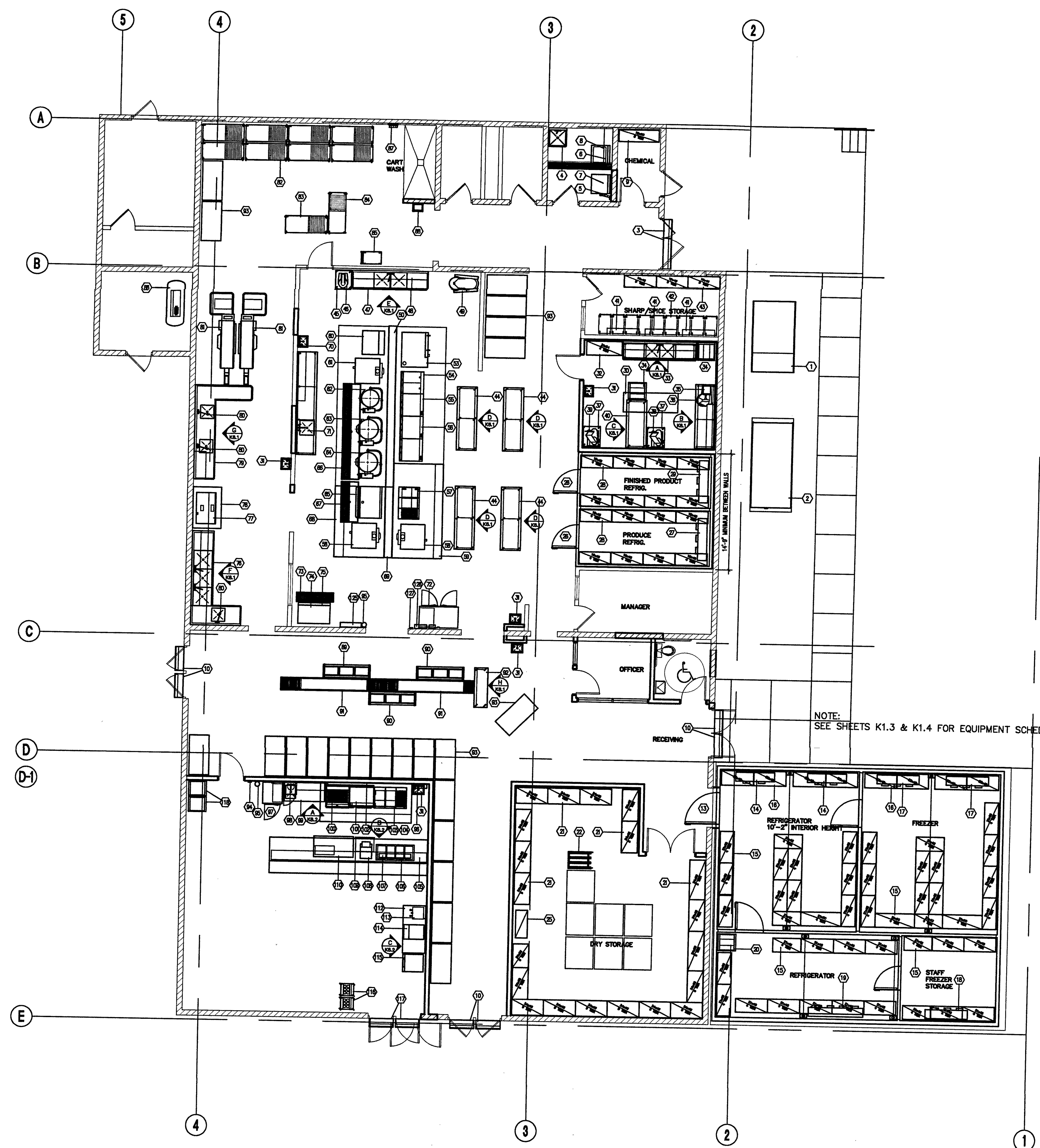


NOTE:
THIS IS THE 1/8" SCALE ADDITIVE ALTERNATE PLAN



NOTE:
SEE SHEETS K1.3 & K1.4 FOR EQUIPMENT SCHEDULES

PROVIDED
ARCHITECT:
C&B Nevada, Inc.
Architecture, Interiors, Planning and
Related Services
6655 Bermuda Road
Las Vegas, Nevada 89119-3605
702-938-5400 702-938-5541 Fax
ENGINEER:
Carter Burgess
Consultants in Planning, Engineering,
Construction Management, and Related Services
6655 Bermuda Road
Las Vegas, Nevada 89119
702-938-5400 Fax 702-938-5541
Carter Burgess / C&B Nevada Inc. Proj. No. _____

CITY OF LAS VEGAS DETENTION CULINARY UPGRADE
3300 E. STEWART AVE., LAS VEGAS, NEVADA
BID NUMBER: 04.1534110 CLV DRAWING NUMBER: 513-552J
FOODSERVICE EQUIPMENT PLANS

OWNER: CITY OF LAS VEGAS
DEPARTMENT OF PUBLIC WORKS
OFFICE OF ARCHITECTURAL SERVICES

400 EAST STEWART AVENUE
LAS VEGAS, NEVADA 89101
PHONE: (702) 228-6533
FAX: (702) 366-6846
TDD: (702) 366-6108

DRAWN: J MACE
DATE: 9/20/04
SCALE:
BID NO: 04.15341.10
CLV DWG NO: 513-552J
100% C.D.

DWG NO: K1.0

DIMENSIONS AS INSTRUMENTS OF SERVICE ARE THE PROPERTY OF THE DESIGN PROFESSIONAL WHOSE STAMP OR CERTIFICATION APPEARS ON THE DRAWINGS AND SPECIFICATIONS. ANY USE OR REPRODUCTION IN WHOLE OR IN PART WITHOUT WRITTEN CONSENT IS EXPRESSLY PROHIBITED. COPIES OF THE DRAWINGS AND SPECIFICATIONS FURNISHED BY THE CLIENT MAY BE UTILIZED ONLY FOR OCCUPANCY OF THE PROJECT FOR WHICH THEY WERE PREPARED AND NOT FOR THE CONSTRUCTION OF ANY OTHER PROJECT. N.A.C. 823.290