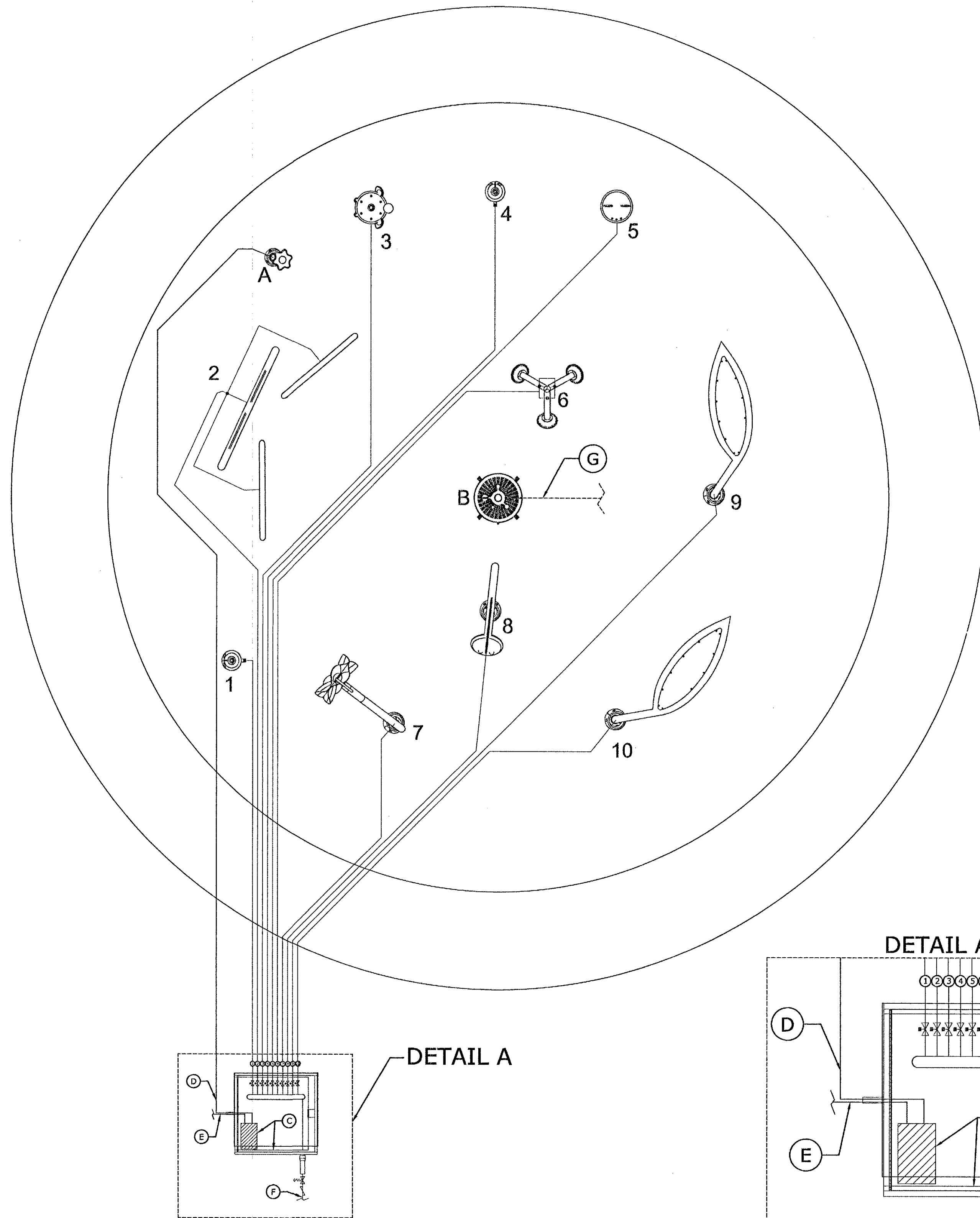


NOTE:

1. REFER TO THE INSTALLATION DRAWING OF EACH PLAY PRODUCT & EQUIPMENT VAULT FOR SPECIFIC INSTALLATION DETAILS.
2. WATER DISTRIBUTION SYSTEM CONFIGURATION IS CONCEPTUAL AND REQUIRE APPROVAL PRIOR TO INSTALLATION.
3. SPLASHPAD ACTIVITY DECK & DRAIN LINE ARE RECOMMENDED TO HAVE A 1-2% SLOPE TO OPTIMIZE DRAINAGE.
4. ALL PIPING TO FEATURES ARE RECOMMENDED TO HAVE A 1-2% SLOPE FOR WINTERIZATION.
5. ALL LINE SIZING FROM LEGEND 1 ASSUMES A MAXIMUM DISTANCE OF 100 FEET BETWEEN THE WATER DISTRIBUTION MANIFOLD AND THE FURTHEST PLAY PRODUCT. DISTANCES ABOVE 100 FEET MAY REQUIRE AN INCREASE IN LINE SIZING. PLEASE CONTACT VORTEX.
6. ALL PIPING BETWEEN THE PLAY PRODUCTS, PLAYSAFE DRAIN No1 & WATER DISTRIBUTION SYSTEM ARE RECOMMENDED TO BE SCHEDULE 80 PVC.
7. FINAL LOCATION OF PLAYSAFE DRAIN No1 AND LINE ROUTING ARE TO BE DETERMINED BY INSTALLER.
8. WIRING FROM THE CONTROLLER TO EACH ACTIVATOR SHALL BE #14 AWG. A TOTAL OF TWO (2) CONDUCTORS PER ACTIVATOR.
9. ALL CONNECTIONS TO THE CONTROLLER SHALL BE PERFORMED USING AN APPROVED NEMA 4X CONNECTOR.
10. ANY REQUIRED PRESSURE REGULATOR, BACKFLOW PREVENTOR OR WATER METER ON THE CITY WATER MAIN SHALL BE PROVIDED BY INSTALLER.
11. MINIMUM 50 PSI REQUIRED AT THE INLET OF THE BACKFLOW PREVENTOR AND PRESSURE REGULATING DEVICE.
12. VALVE NUMBER 1 IS LOCATED ON THE TOP LEFT OF THE MANIFOLD WHEN FACING THE MANIFOLD FROM INSIDE THE VAULT.
13. ANY CHANGES TO THE PIPING AND ELECTRICAL SCHEMATIC AFTER FINAL APPROVAL, MAY INCUR ADDITIONAL PROGRAMMING CHARGES.
14. TOTAL COMBINED FLOW CAPACITY OF PLAY PRODUCT IS 117 GPM.  
MAXIMUM FLOW CAPACITY OF MANIFOLD IS 72 GPM.

TOTAL AREA: 2003 ft<sup>2</sup> (186 m<sup>2</sup>)  
 SPRAY AREA: 1288 ft<sup>2</sup> (120 m<sup>2</sup>)



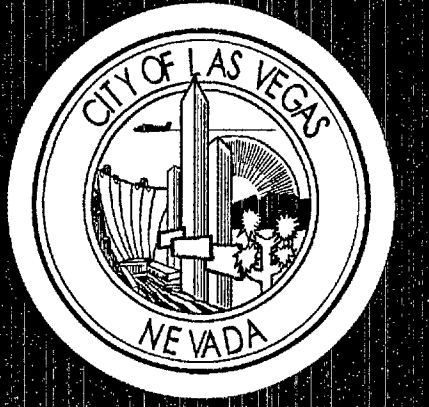
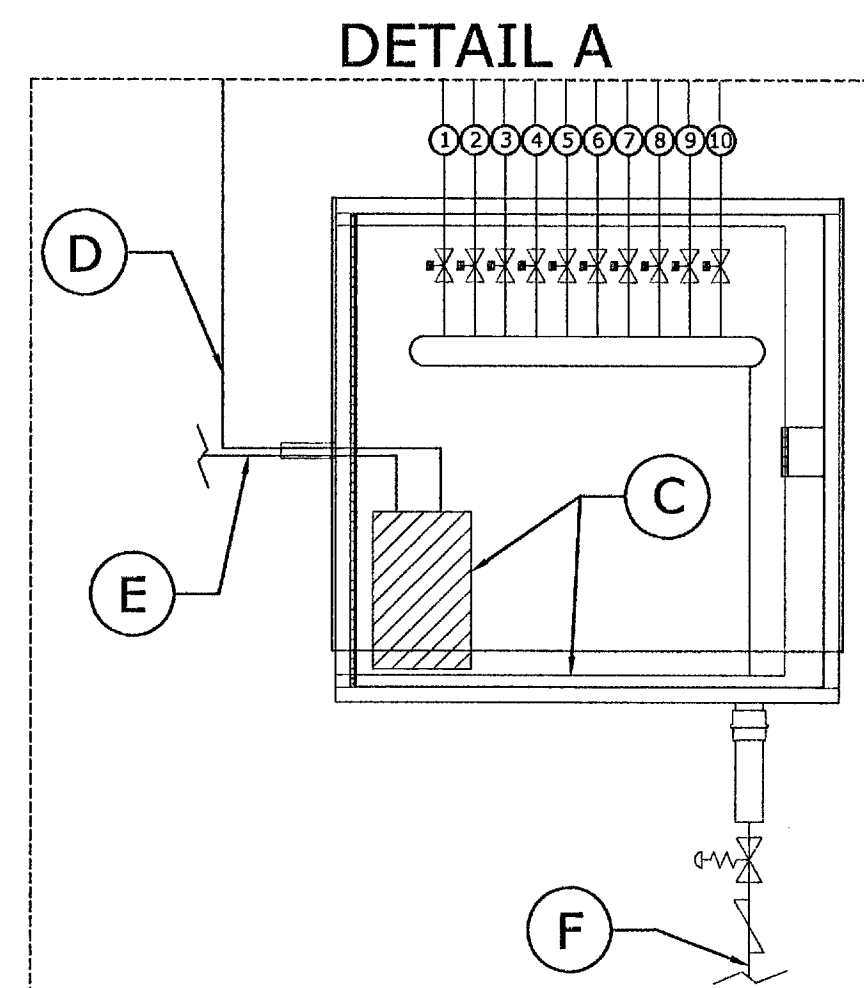
**SPLASHPAD PIPING & ELECTRICAL**

LEGEND -1

LINE	PRODUCT	QTY	LINE SIZE	GPM
1	Foaming Geyser No1 VOR-7020	1	1 1/2"	14
2	Bullfrog VOR-524	1	1 1/2"	17
3	Watergarden Turtle No1 VOR-7212	1	1 1/2"	9
4	Foaming Geyser No1 VOR-7020	1	1 1/2"	14
5	Watergarden Frog No2 VOR-7201	1	1 1/2"	4
6	Sunflower VOR-513	1	1 1/2"	20
7	Aqualien Spinner No1 VOR-1332	1	1 1/2"	18
8	Watergarden Snake No2 VOR-7214	1	1 1/2"	7
9	Leaf No1 VOR-7548	1	1 1/2"	7
10	Leaf No1 VOR-7548	1	1 1/2"	7

LEGEND -2

CODE	PRODUCT	QTY	LINE SIZE
A	Watergarden Activator No1 VOR-612	1	
B	Playsafe Drain No1 VOR-1001.4000	1	6"
C	Vortex 10 Valve Equipment Vault with 10 Output SmartFlow 2 Controller VOR-1610.11A0		
D	Electrical Conduit from Controller to Activator; 2 Conductors #14 AWG (by Installer)		
1③ SP-1	E Electrical Service Line 120 VAC, 10 AMP Service (by Installer)		
1④ SP-1	F City Water Line (by Installer)		2" Minimum
1② SP-1	G To Municipal Drain (by Installer)		
Σ*	Solenoid Valve	10	
Σ**	Pressure Regulator (by Installer) Watts (pressure reg. keeps below 40 psi)	1	
1⑦ SP-1	Backflow Preventor (by Installer)	1	



REVISIONS  
 CONSULTANT  
 Manufacture **VORTEX**  
 328 Avro Street  
 Pointe Claire (Montreal)  
 Québec, Canada H9R 5W5

Doolittle Park Renovation  
 Phase 1  
 Splash Pad  
**PIPING AND ELECTRICAL**



OWNER: CITY OF LAS VEGAS  
 DEPARTMENT OF PUBLIC WORKS  
 ARCHITECTURAL SERVICES  
 400 EAST STEWART AVENUE  
 LAS VEGAS, NEVADA 89101  
 PHONE: (702) 230-6535  
 FAX: (702) 382-3232  
 TDD: (702) 386-9108

DRAWN: Enlarged Plans  
 DATE: 10/09/13  
 SCALE: N/A  
 BID NO: 11.5341.14  
 CLV DWG NO: 650.15-WFA

**AS BUILT**  
 CORE Construction  
 10/13/14

SHEET NO: 26  
**SP-3**