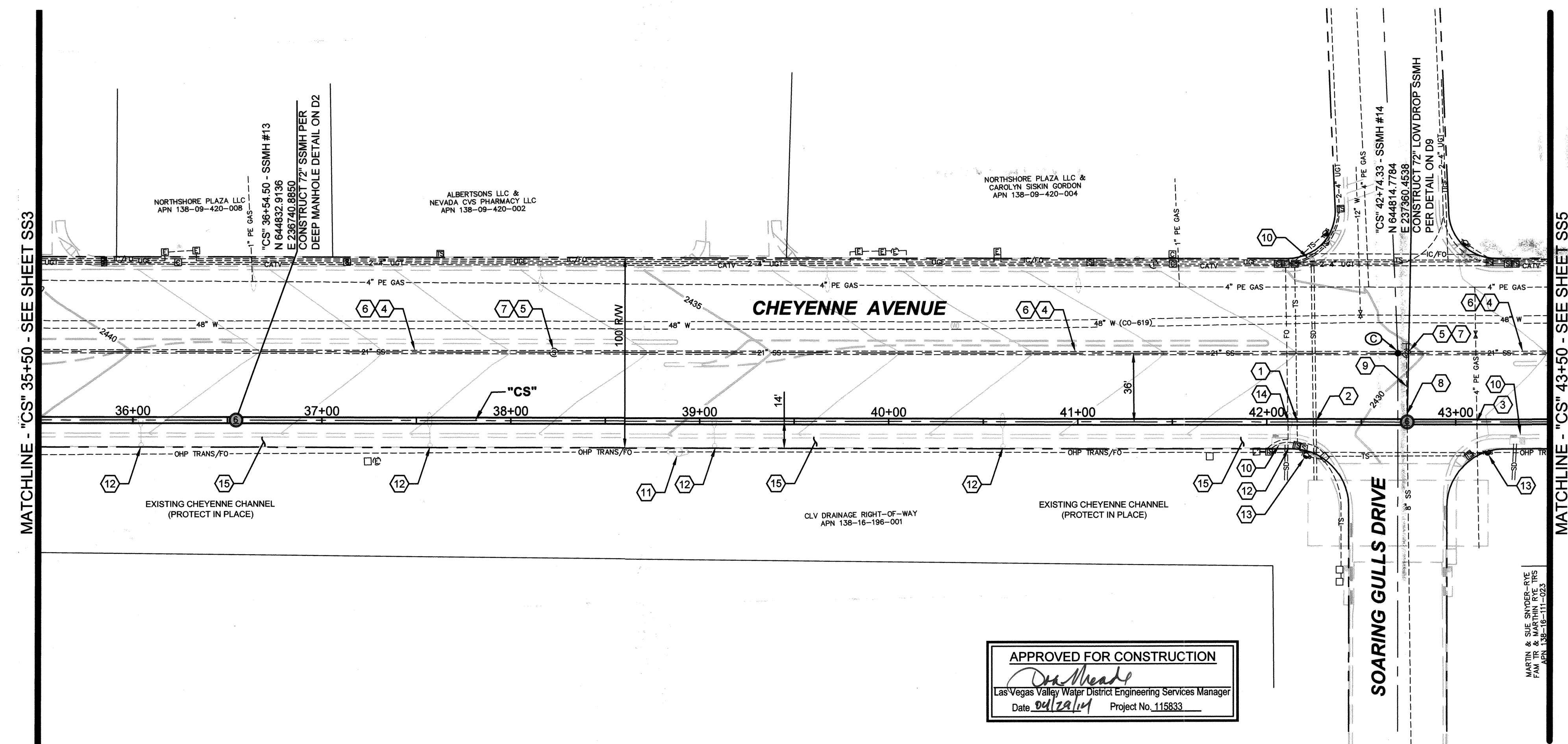
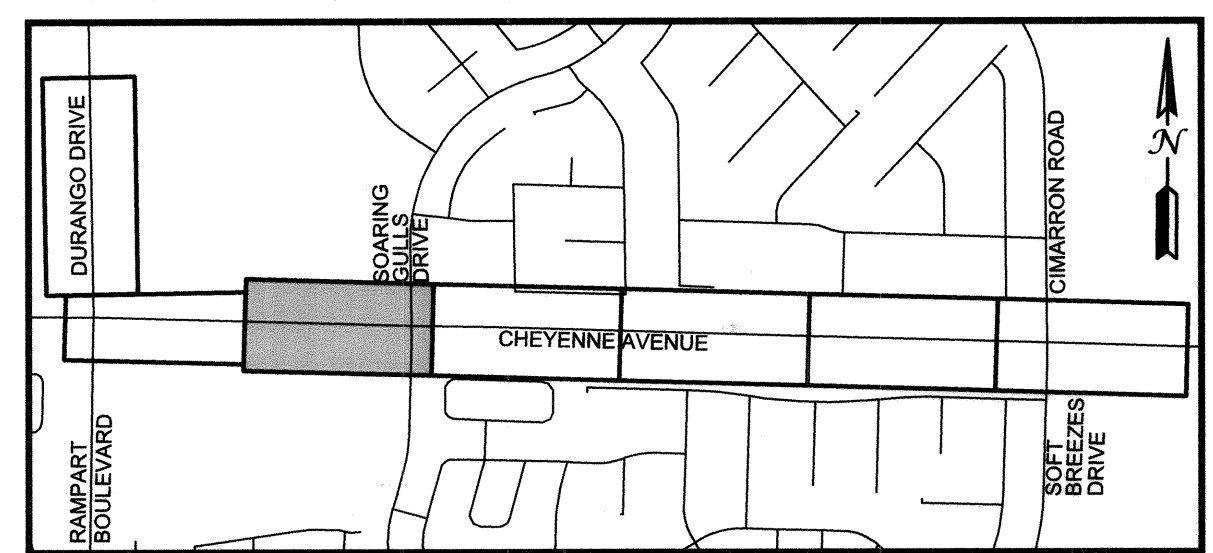
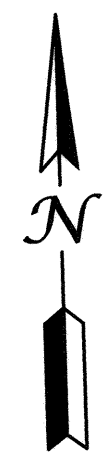
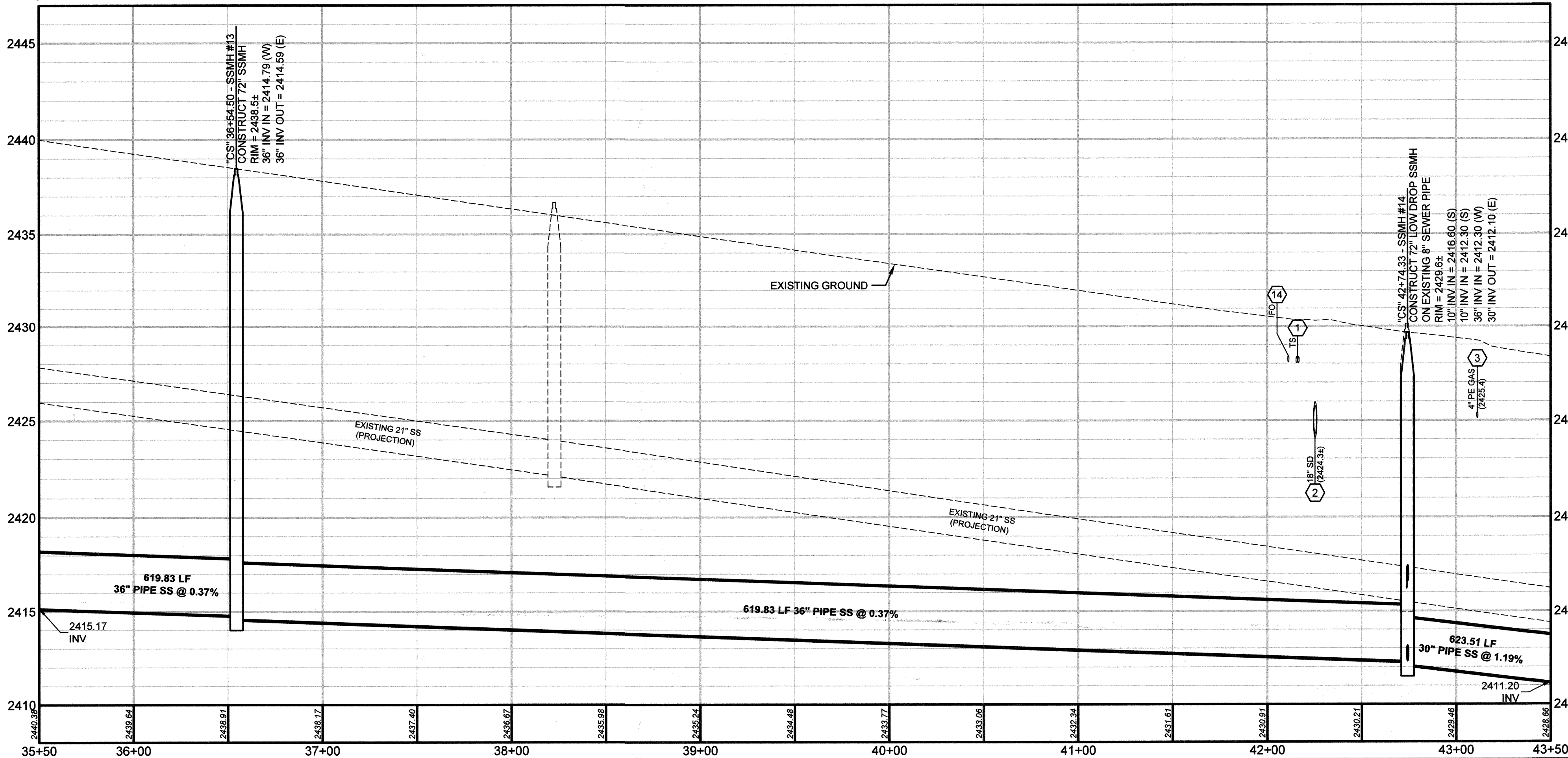


FILE NAME: D:\HS_LAYOUT_CSD_CHEYENNE SEWER.DWG



APPROVED FOR CONSTRUCTION
De Meade
 Las Vegas Valley Water District Engineering Services Manager
 Date: 04/22/14 Project No. 115833



Scale In Feet
 1 inch = 40 feet

- MISCELLANEOUS CONSTRUCTION NOTES:**
- EXISTING TS (PROTECT IN-PLACE OR ADJUST AS NECESSARY PER SPECIFICATION SECTION 623. COST OF ADJUSTING TRAFFIC SIGNAL CONDUIT IS INCIDENTAL TO CONSTRUCTION. SEE TS SHEETS FOR CONDUIT AND WIRE SCHEDULE.)
 - EXISTING SD (PROTECT IN-PLACE)
 - EXISTING 4" PE GAS (PROTECT IN-PLACE)
 - ABANDON 21" SS PER SPECIFICATION SECTION 630 (800 LF THIS SHEET)
 - ABANDON SSMH PER SPECIFICATION SECTION 630
 N = 644863.72, E = 236910.15
 N = 644850.88, E = 237361.02
 - EXISTING 21" SS (PROTECT IN-PLACE DURING SS CONST. THEN TO BE ABANDONED ONCE RELIEF SEWER IS ACTIVE)
 - EXISTING SSMH (PROTECT IN-PLACE DURING SS CONST. THEN TO BE ABANDONED ONCE RELIEF SEWER IS ACTIVE)
 - REMOVE 7' OF 8" SS ACROSS SSMH
 - ABANDON 8" SS PER SPECIFICATION SECTION 630 (30 LF)
 - EXISTING STORM DRAIN DROP INLET (PROTECT IN-PLACE)
 - EXISTING POWER POLE (PROTECT IN-PLACE PER SPECIFICATION SECTION 650)
 - EXISTING STREET LIGHT (PROTECT IN-PLACE)
 - EXISTING SIGNAL POLE (PROTECT IN-PLACE)
 - EXISTING FO (PROTECT IN-PLACE)
 - EXISTING CURB, GUTTER, AND SIDEWALK (PROTECT IN-PLACE OR REMOVE AND REPLACE AS NECESSARY FOR CONSTRUCTION AT NO ADDITIONAL COST TO THE OWNER)

SURVEY MONUMENTS*

CAP	NORTHING	EASTING	SHEET	LOCATION
(A)	646269.054	235982.787	D4	DURANGO
(B)	644890.462	236003.688	D4/SS2/SS3	DURANGO/CHEYENNE
(C)	644850.889	237356.533	SS4	SOARING GULLS/CHEYENNE
(D)	644822.546	238370.795	SS6	CHEYENNE
(E)	644813.051	238708.917	SS6	CHEYENNE
(F)	644793.793	239384.528	SS7	CHEYENNE
(G)	644784.194	239722.379	SS7	CHEYENNE
(H)	644774.532	240060.098	SS8	CIMARRON/CHEYENNE

*SEE CITY OF LAS VEGAS GENERAL NOTE #13 ON SHEET G3

- NOTES:**
- CONTRACTOR SHALL VERIFY ALL HORIZONTAL AND VERTICAL LOCATIONS OF EXISTING FACILITIES BEING TIED INTO OR CROSSING PRIOR TO ANY WORK BEING DONE. CONTRACTOR SHALL COORDINATE ANY DISCREPANCIES WITH THE ENGINEER.
 - LINEAR FOOTAGE (LF), SLOPES, AND INVERTS OF SANITARY SEWER PIPES AS SHOWN ON THE PLANS ARE CALCULATED HORIZONTALLY FROM CENTERLINE OF MANHOLE TO CENTERLINE OF MANHOLE.
 - SEE PR1-PR4 & D3 SHEETS FOR PAVEMENT, CURB, GUTTER, SIDEWALK, MEDIAN AND LANDSCAPING REMOVAL/REPLACEMENT LIMITS
 - ALL WATERLINES CROSSING TRENCH WIDTHS GREATER THAN 6 FT. SHALL HAVE A PIPE SUPPORT DETAIL SUBMITTED TO THE DISTRICT FOR APPROVAL PRIOR TO EXCAVATION.

FAST
 Call before you UnderGround
 1-702-432-5300
 FREEMAN AND ARTERIAL SYSTEM OF TRANSPORTATION

AVOID OVER-HEAD POWER LINE CONTACT. IT'S COSTLY.
Call before you Overhead
 1-702-227-2929
 NV ENERGY ENVIRONMENT AND SAFETY SERVICES DEPARTMENT

Call before you Dig
 AVOID CUTTING UNDERGROUND UTILITY LINES. IT'S COSTLY.
Call 811

DEPARTMENT OF PUBLIC WORKS
 ENGINEERING DESIGN SECTION
 CITY ENGINEER: DAVID N. BOWERS, P.E.
 PROJECT MANAGER: GINA VENGLASS, P.E.

CH2MHILL
 PROJECT MANAGER: DAVID N. BOWERS, P.E.
 PROJECT MANAGER: GINA VENGLASS, P.E.

SANITARY SEWER DESIGN PLAN AND PROFILE "CS" 35+50 TO "CS" 43+50

Sheet **SS4**
 8 of 35
 DATE: April 2014
 DWG NO.: 307V1045

REVISION
 NO. DATE DSGN DR D. PUBLLOW M. WARNICK APVD BY APVD J. GRIEST