

**KEY MAP**

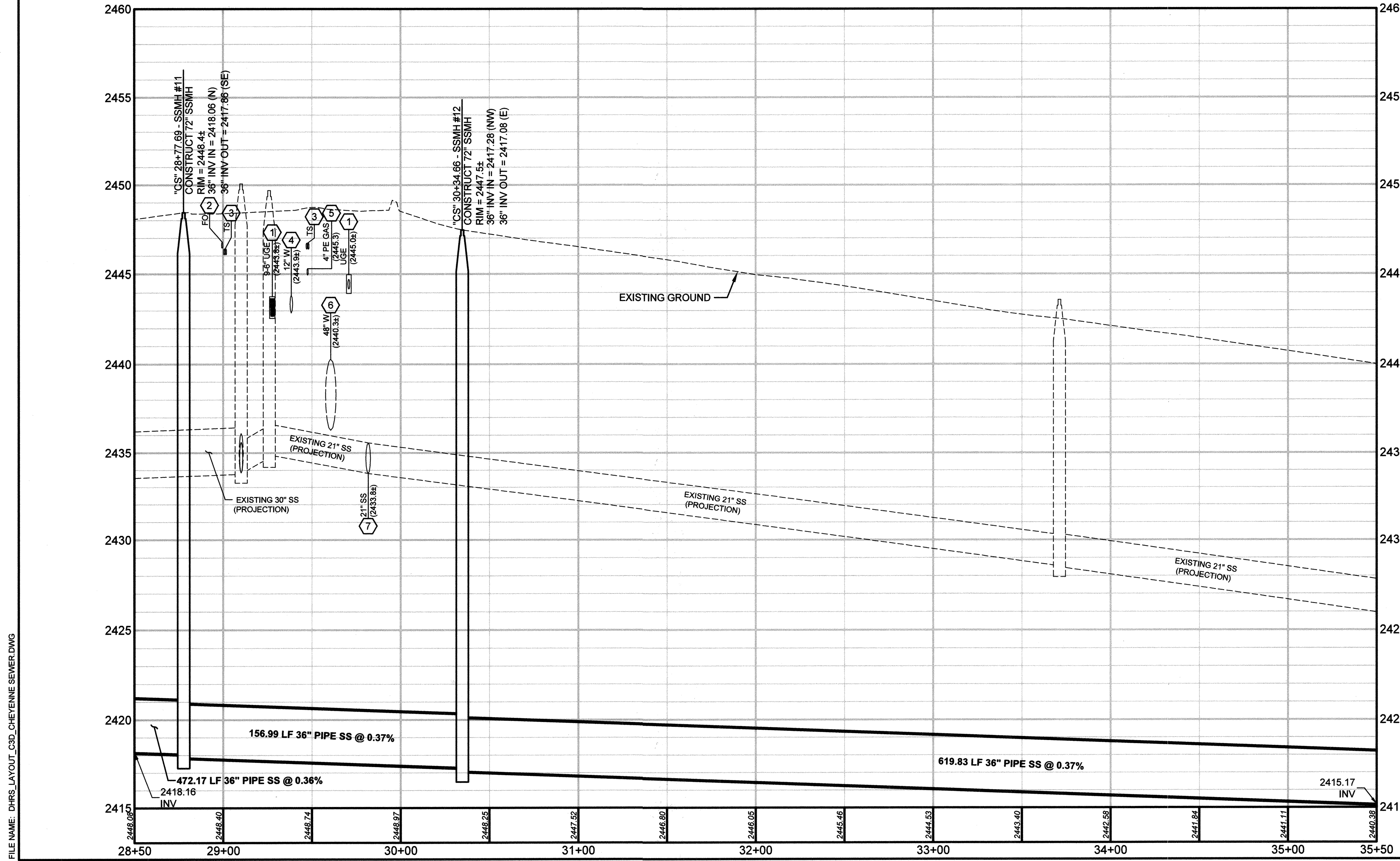
- MISCELLANEOUS CONSTRUCTION NOTES:**
- 1 EXISTING UGE (PROTECT IN-PLACE)
  - 2 EXISTING FO (PROTECT IN-PLACE)
  - 3 EXISTING TS (PROTECT IN-PLACE OR ADJUST AS NECESSARY PER SPECIFICATION SECTION 623. COST OF ADJUSTING TRAFFIC SIGNAL CONDUIT IS INCIDENTAL TO CONSTRUCTION. SEE TS SHEETS FOR CONDUIT AND WIRE SCHEDULE.)
  - 4 EXISTING 12" W (PROTECT IN-PLACE PER SPECIFICATION SECTION 629)
  - 5 EXISTING 4" PE GAS (PROTECT IN-PLACE)
  - 6 EXISTING 48" W (PROTECT IN-PLACE PER SPECIFICATION SECTION 629)
  - 7 EXISTING 21" SS (PROTECT IN-PLACE DURING SS CONST. THEN TO BE ABANDONED ONCE RELIEF SEWER IS ACTIVE)
  - 8 CAP EXISTING 21" SS AT NEW MANHOLE AND ABANDON SEWER TO THE EAST PER SPECIFICATION 630
  - 9 ABANDON 21" SS PER SPECIFICATION SECTION 630 (715 LF THIS SHEET)
  - 10 ABANDON SSMH PER SPECIFICATION SECTION 630  
N = 644890.05, E = 236007.70  
N = 644877.29, E = 236458.78
  - 11 MODIFY EXISTING CHEYENNE/DURANGO DIVERSION STRUCTURE PER DETAIL ON D10
  - 12 EXISTING 27" SS (PROTECT IN-PLACE)
  - 13 EXISTING POWER POLE (PROTECT IN-PLACE PER SPECIFICATION SECTION 650)
  - 14 EXISTING STREET LIGHT (PROTECT IN-PLACE)
  - 15 EXISTING SSMH (PROTECT IN-PLACE DURING SS CONT. THEN TO BE ABANDONED ONCE RELIEF SEWER IS ACTIVE)
  - 16 EXISTING STORM DRAIN DROP INLET (PROTECT IN-PLACE)
  - 17 EXISTING SSMH (PROTECT IN-PLACE)
  - 18 EXISTING 30" SS (PROTECT IN-PLACE)
  - 19 EXISTING DROP INLET TO BE REMOVED AND REPLACED SEE SHEET D3.
  - 20 EXISTING CURB, GUTTER, AND SIDEWALK (PROTECT IN-PLACE OR REMOVE AND REPLACE AS NECESSARY FOR CONSTRUCTION AT NO ADDITIONAL COST TO THE OWNER)

**SURVEY MONUMENTS\***

CAP	NORTHING	EASTING	SHEET	LOCATION
(A)	646269.054	235982.787	D4	DURANGO
(B)	644890.462	236003.688	D4/SS2/SS3	DURANGO/CHEYENNE
(C)	644850.889	237356.533	SS4	SOARING GULLS/CHEYENNE
(D)	644822.546	238370.795	SS6	CHEYENNE
(E)	644813.051	238708.917	SS6	CHEYENNE
(F)	644793.793	239384.528	SS7	CHEYENNE
(G)	644784.194	239722.379	SS7	CHEYENNE
(H)	644774.532	240060.098	SS8	CIMARRON/CHEYENNE

\*SEE CITY OF LAS VEGAS GENERAL NOTE #13 ON SHEET G3

- NOTES:**
1. CONTRACTOR SHALL VERIFY ALL HORIZONTAL AND VERTICAL LOCATIONS OF EXISTING FACILITIES BEING TIED INTO OR CROSSING PRIOR TO ANY WORK BEING DONE. CONTRACTOR SHALL COORDINATE ANY DISCREPANCIES WITH THE ENGINEER.
  2. LINEAR FOOTAGE (LF), SLOPES, AND INVERTS OF SANITARY SEWER PIPES AS SHOWN ON THE PLANS ARE CALCULATED HORIZONTALLY FROM CENTERLINE OF MANHOLE TO CENTERLINE OF MANHOLE.
  3. SEE PR1-PR4 & D3 SHEETS FOR PAVEMENT, CURB, GUTTER, SIDEWALK, MEDIAN AND LANDSCAPING REMOVAL/REPLACEMENT LIMITS
  4. ALL WATERLINES CROSSING TRENCH WIDTHS GREATER THAN 6 FT. SHALL HAVE A PIPE SUPPORT DETAIL SUBMITTED TO THE DISTRICT FOR APPROVAL PRIOR TO EXCAVATION.



**APPROVED FOR CONSTRUCTION**  
*Don Meade*  
 Las Vegas Valley Water District Engineering Services Manager  
 Date: 2/29/14 Project No. 115833

**FAST**  
 Call before you UnderGround  
 1-702-432-5300  
 FREIGHTWAY AND ARTERIAL SYSTEM OF TRANSPORTATION

AVOID OVERHEAD POWER LINE CONTACT. IT'S COSTLY.  
**Call before you Overhead**  
 1-702-227-2929  
 NV ENERGY ENVIRONMENT AND SAFETY SERVICES DEPARTMENT

Call before you Dig  
 AVOID CUTTING UNDERGROUND UTILITY LINES. IT'S COSTLY.  
**Call 811**

NO.	DATE	DR.	CHK.	BY
1		M. WARRICK	D. PUBLLOW	APVD J. GRIEST

**DEPARTMENT OF PUBLIC WORKS**  
**ENGINEERING DESIGN SECTION**  
 CITY ENGINEER: DAVID N. BOWERS, P.E.  
 PROJECT MANAGER: GINA VENGILASS, P.E.  
**DURANGO HILLS RELIEF SEWER PROJECT**

**CH2MHILL**  
 2468 VILLAGE VIEW DRIVE, SUITE 300, HENDERSON, NV 89074  
 PHONE 702-398-9175, CH2M HILL PROJECT #240098

**SANITARY SEWER DESIGN PLAN AND PROFILE**  
 "CS" 28+50 TO "CS" 35+50

Professional Engineer - State of Nevada  
**JEFFREY N. GRIEST**  
 EXP. 06/30/15  
 CIVIL  
 No. 17156  
 L1-22-14

Sheet **SS3**  
 7 of 35  
 DATE April 2014  
 DWG NO. 307V1045

FILE NAME: DIRS\_LAYOUT\_CSD\_CHEYENNE SEWER.DWG