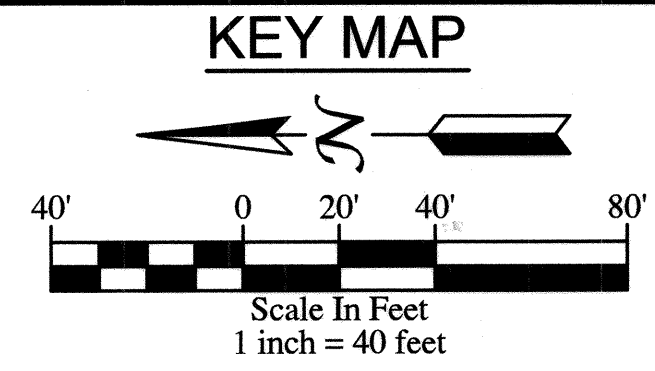
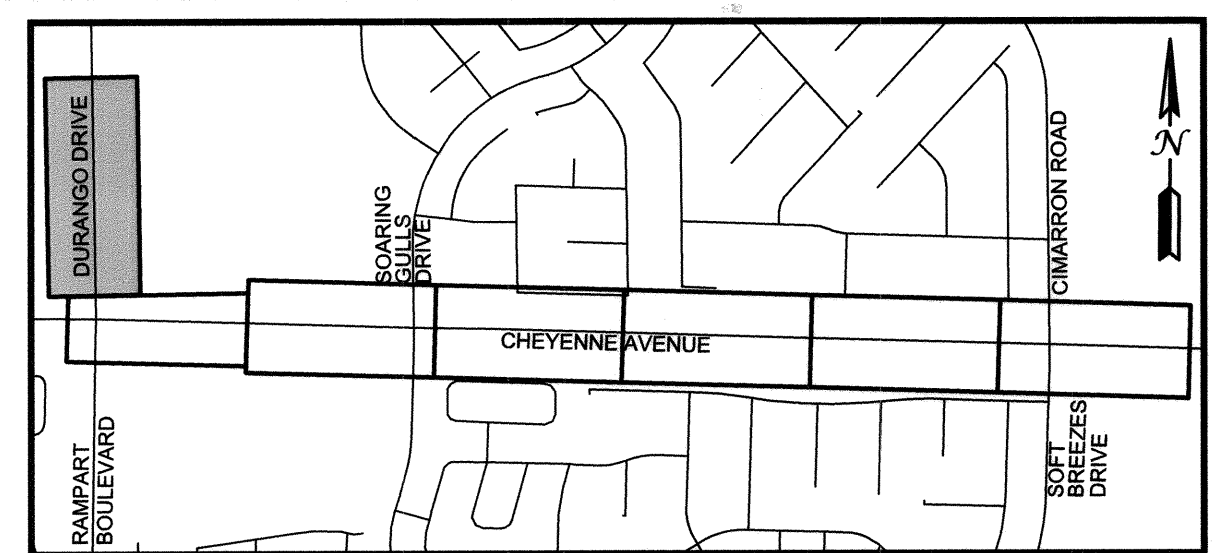
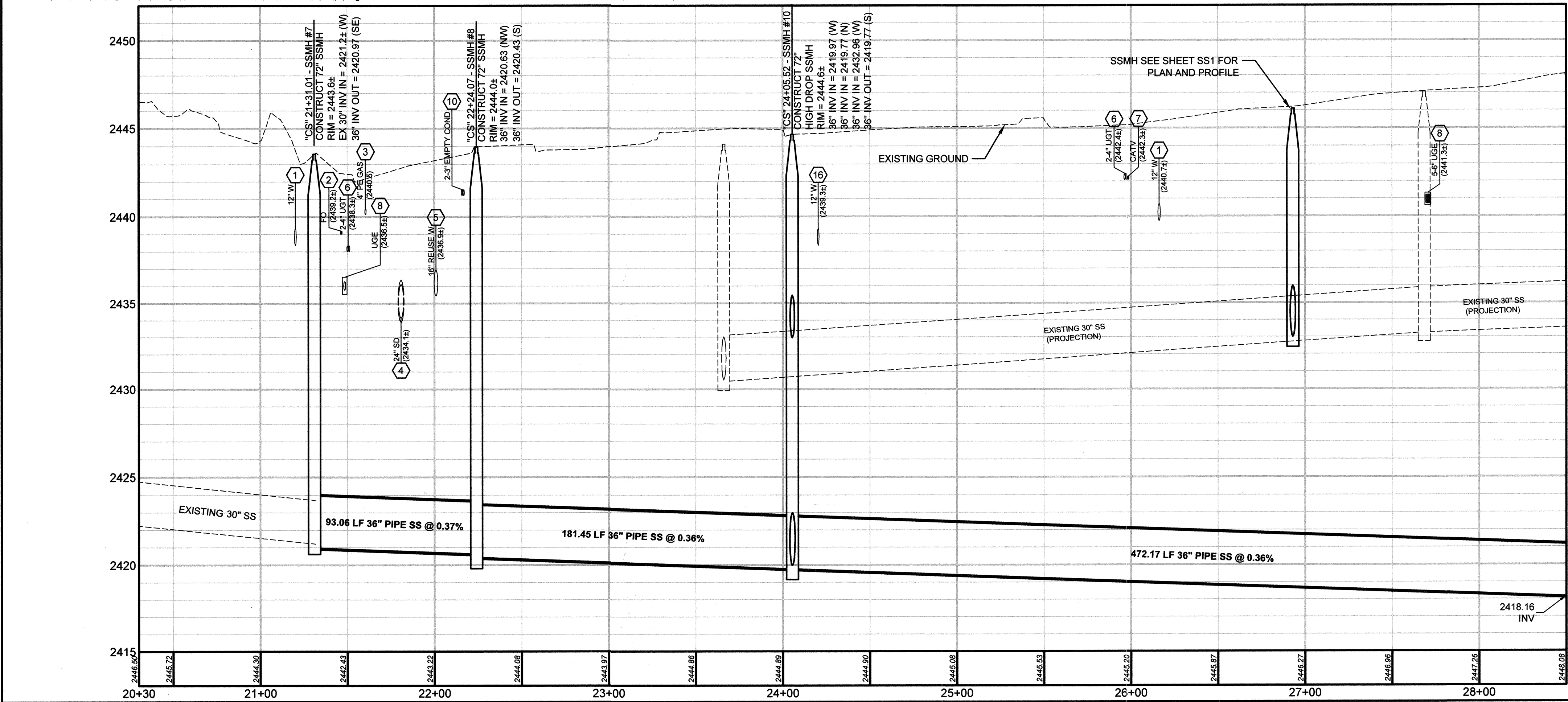
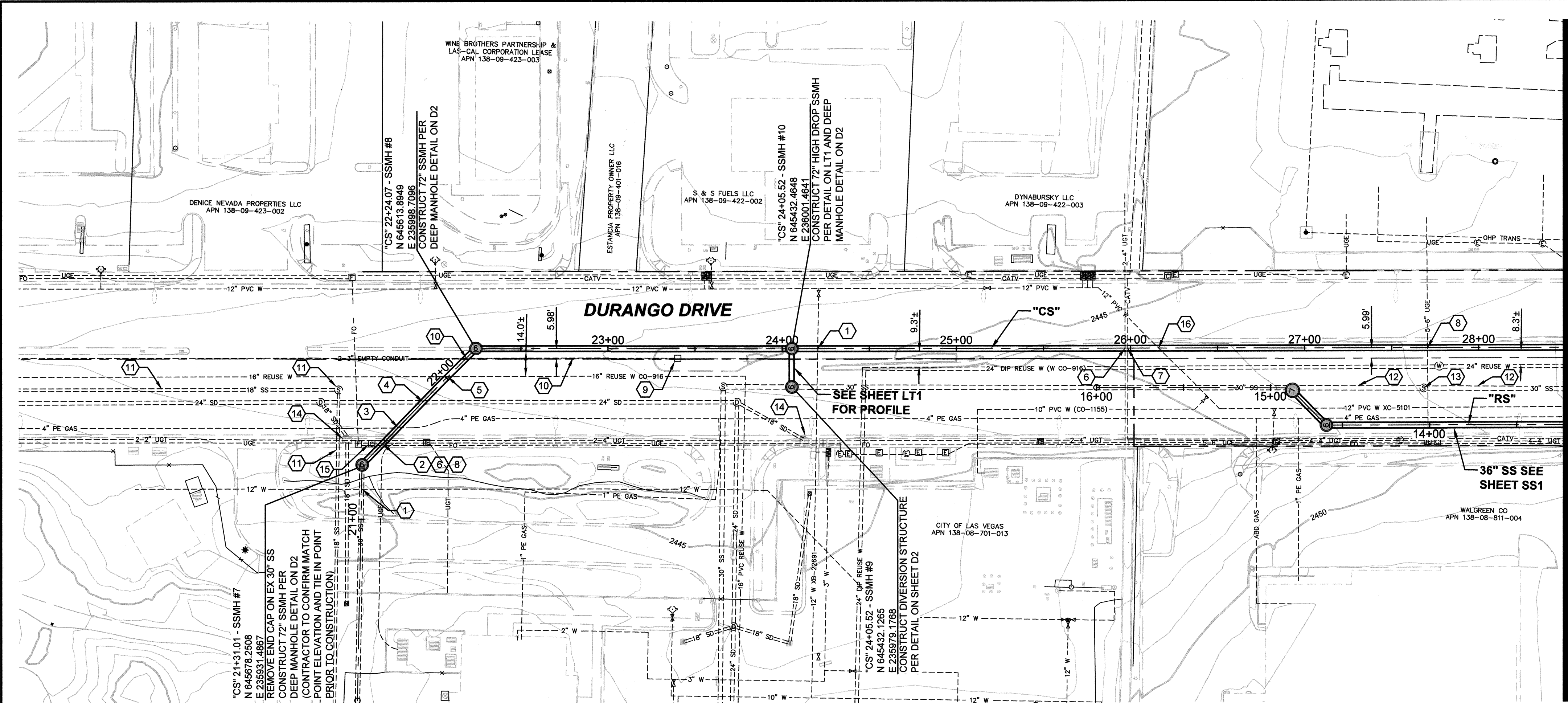


FILE NAME: D:\RIS\_LAYOUT\_CSD\_CHEYENNE SEWER.DWG



**MISCELLANEOUS CONSTRUCTION NOTES:**

- 1 EXISTING 12" W (PROTECT IN-PLACE)
- 2 EXISTING FO (PROTECT IN-PLACE)
- 3 EXISTING 4" PE GAS (PROTECT IN-PLACE)
- 4 EXISTING 24" SD (PROTECT IN-PLACE)
- 5 EXISTING 16" REUSE W (PROTECT IN-PLACE PER SPECIFICATION SECTION 629)
- 6 EXISTING UGT (PROTECT IN-PLACE)
- 7 EXISTING CATV (PROTECT IN-PLACE)
- 8 EXISTING UGE (PROTECT IN-PLACE)
- 9 REMOVE AND REPLACE EXISTING #5 PULL BOX
- 10 REPLACE 130± LF OF (2)3" EXISTING EMPTY CONDUIT
- 11 SEE SHEET D4 FOR SEWER ABANDONMENT
- 12 EXISTING 30" SS (PROTECT IN-PLACE)
- 13 EXISTING SSMH (PROTECT IN-PLACE)
- 14 EXISTING STORM DRAIN DROP INLET (PROTECT IN-PLACE)
- 15 EXISTING CATV PULL BOX (TO BE RELOCATED BY OTHERS)
- 16 EXISTING 12" W (PROTECT IN-PLACE PER SPECIFICATION SECTION 629)

SURVEY MONUMENTS*				
CAP	NORTHING	EASTING	SHEET	LOCATION
A	646269.054	235982.787	D4	DURANGO/CHEYENNE
B	644890.462	236003.688	D4/SS2/SS3	DURANGO/CHEYENNE
C	644850.889	237356.533	SS4	SOARING GULLS/CHEYENNE
D	644822.546	238370.795	SS6	CHEYENNE
E	644813.051	238708.917	SS6	CHEYENNE
F	644793.793	239384.528	SS7	CHEYENNE
G	644784.194	239722.379	SS7	CHEYENNE
H	644774.532	240060.098	SS8	CIMARRON/CHEYENNE

- \*SEE CITY OF LAS VEGAS GENERAL NOTE #13 ON SHEET G3
- NOTES:**
- CONTRACTOR SHALL VERIFY ALL HORIZONTAL AND VERTICAL LOCATIONS OF EXISTING FACILITIES BEING TIED INTO OR CROSSING PRIOR TO ANY WORK BEING DONE. CONTRACTOR SHALL COORDINATE ANY DISCREPANCIES WITH THE ENGINEER.
  - LINEAR FOOTAGE (LF), SLOPES, AND INVERTS OF SANITARY SEWER PIPES AS SHOWN ON THE PLANS ARE CALCULATED HORIZONTALLY FROM CENTERLINE OF MANHOLE TO CENTERLINE OF MANHOLE.
  - REFER TO SHEET D4 FOR MODIFICATION OF EXISTING ONSITE HIGH DROP MANHOLE.
  - SEE PR1- PR4 & D3 SHEETS FOR PAVEMENT, CURB, GUTTER, SIDEWALK, MEDIAN AND LANDSCAPING REMOVAL/REPLACEMENT LIMITS.
  - ALL WATERLINES CROSSING TRENCH WIDTHS GREATER THAN 6 FT. SHALL HAVE A PIPE SUPPORT DETAIL SUBMITTED TO THE DISTRICT FOR APPROVAL PRIOR TO EXCAVATION.

APPROVED FOR CONSTRUCTION  
*[Signature]*  
 Las Vegas Valley Water District Engineering Services Manager  
 Date: 04/29/14 Project No. 115833

**FAST**  
 Call before you UnderGround  
 1-702-432-5300  
 FREWAY AND AIRTRIAL SYSTEM OF TRANSPORTATION

AVOID OVERHEAD POWER LINE CONTACT. IT'S COSTLY.  
 Call before you Overhead  
 1-702-227-2929  
 NV ENERGY ENVIRONMENT AND SAFETY SERVICES DEPARTMENT

Call before you Dig  
 AVOID CUTTING UNDERGROUND UTILITY LINES. IT'S COSTLY.  
 Call 811  
 No. 1756

DEPARTMENT OF PUBLIC WORKS  
 ENGINEERING DESIGN SECTION  
 CITY ENGINEER: DAVID N. BOWERS, P.E.  
 PROJECT MANAGER: GINA VENGLASS, P.E.  
**DURANGO HILLS RELIEF SEWER PROJECT**

**CH2MHILL**  
 4980 LAS VEGAS BLVD., SUITE 1500, HENDERSON, NV 89074  
 PROJECT NO. 115833-01-01-01-01-01-01  
 SANITARY SEWER DESIGN PLAN AND PROFILE  
 "CS" 20+30 TO "CS" 28+50

PROFESSIONAL ENGINEER - STATE OF NEVADA  
**JEFFREY N. GRIEST**  
 EXP. 08/30/15  
 CIVIL  
 No. 1756  
 4-22-14

Sheet **SS2**  
 6 of 35  
 DATE: April 2014  
 DWG NO.: 307V1045

NO.	DATE	DR	D. PUBLLOW	CHK	CH2M HILL	APVD	J. GRIEST
DSGN							
REVISION							

HANSEN #29930