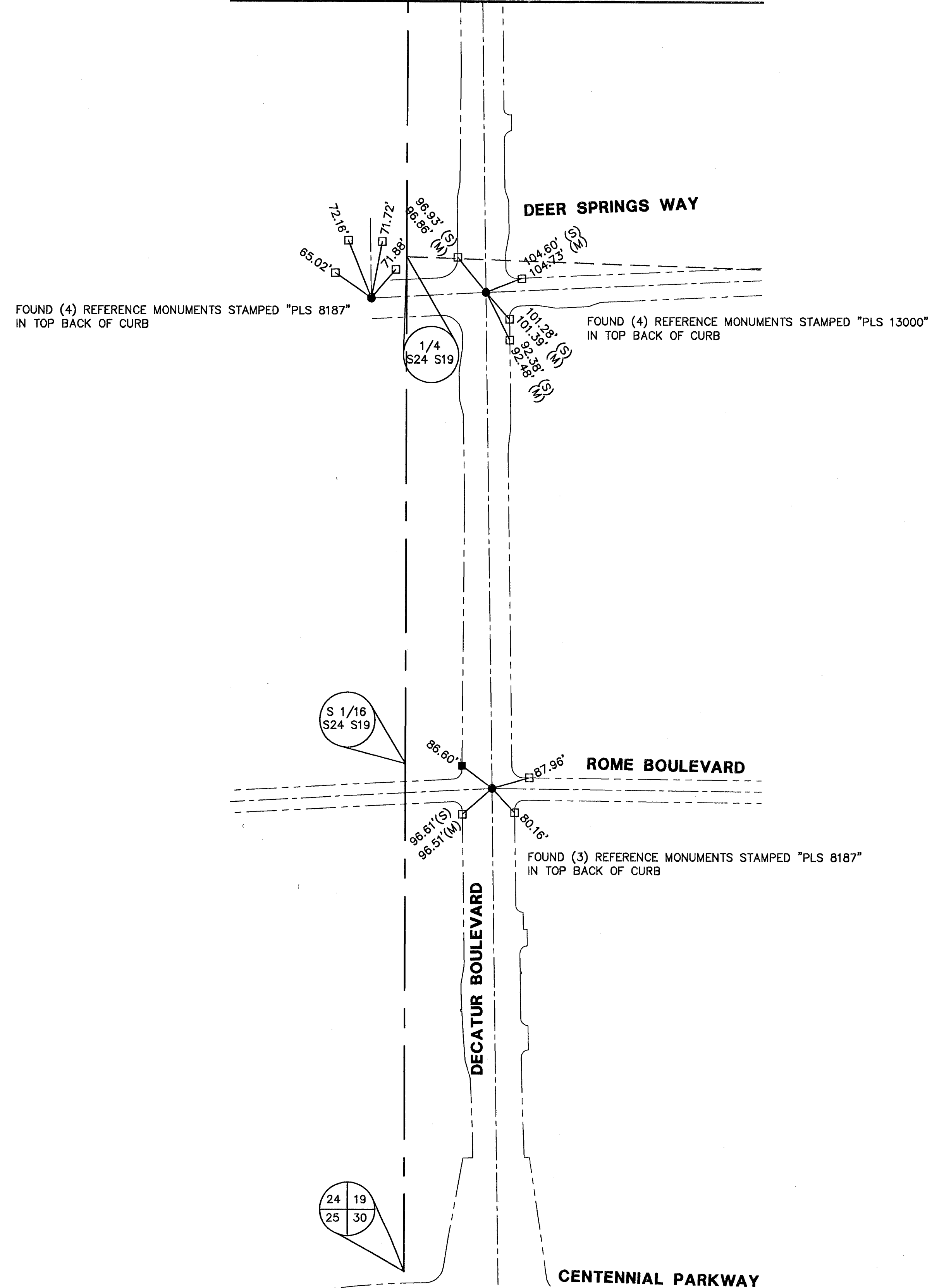


RECORD OF SURVEY / MONUMENTATION TIE MAP

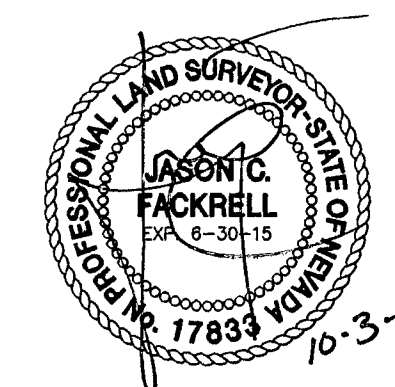
(FILE 187, PAGE 55)
 SECTIONS 13, 14, AND 24, TOWNSHIP 19 SOUTH, RANGE 60 EAST, M.D.M.
 CITY OF LAS VEGAS, CLARK COUNTY, NEVADA
 AND A PORTION OF
 SECTIONS 18 AND 19, TOWNSHIP 19 SOUTH, RANGE 61 EAST, M.D.M.
 CITY OF NORTH LAS VEGAS, CLARK COUNTY, NEVADA

MATCHLINE SEE SHEET 2 OF 4

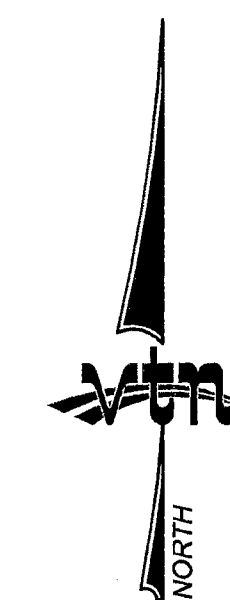


SURVEYOR'S NOTE:

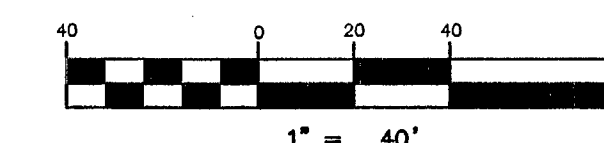
I, JASON C. FACKRELL, A PROFESSIONAL LAND SURVEYOR LICENSED IN THE STATE OF NEVADA, DO HEREBY CERTIFY THAT THE MONUMENTS HAVE BEEN SET AND THE TIE DISTANCES ESTABLISHED AS SHOWN HEREON. THIS SURVEY WAS COMPLETED ON SEPTEMBER 25, 2013.



JASON C. FACKRELL, P.L.S.
 NEVADA LICENSE NO. 17833



GRAPHIC SCALE



NOTES

SEE AMENDED RECORD OF SURVEY FOR BEARING AND DISTANCES.
 (FILE 187, PAGE 55)

LEGEND

- RIGHT OF WAY
- STREET CENTERLINE
- SECTION LINE
- SET 5/8" REBAR AND AL. CAP STAMPED "VTN PLS 17833"
- SET REFERENCE MONUMENTS STAMPED "VTN PLS 17833" IN TOP OF CURB
- FOUND 5/8" REBAR AND AL. CAP AS DESCRIBED
- FOUND REFERENCE MONUMENTS IN TOP BACK OF CURB AS DESCRIBED
- (S) STAMPED DISTANCE ON REFERENCE MONUMENT
- (M) MEASURED DISTANCE TO REFERENCE MONUMENT

CONSULTING ENGINEERS • PLANNERS • LAND SURVEYORS 2727 SOUTH RAINBOW BOULEVARD LAS VEGAS, NEVADA 89102 (702) 873 - 7550 FAX (702) 362 - 2597		NO. _____ FILED AT THE REQUEST OF : CITY OF LAS VEGAS DEPARTMENT OF PUBLIC WORKS DATED _____ AT _____ M	
RECORD OF SURVEY / MONUMENT TIE MAP FOR CITY OF LAS VEGAS DEPARTMENT OF PUBLIC WORKS (FILE 187 OF PLATS, PAGE 55) BEING A PORTION OF SECTIONS 13, 14, 23 AND 24, TOWNSHIP 19 SOUTH RANGE 60 EAST, M.D.M., CITY OF LAS VEGAS, CLARK COUNTY, NEVADA AND A PORTION OF SECTIONS 18 AND 19, TOWNSHIP 19 SOUTH, RANGE 61 EAST, M.D.M., CITY OF NORTH LAS VEGAS, CLARK COUNTY, NEVADA			
SCALE: 1" = 200'	W.O.# 7351	DATE: 10-3-2013	SHEET 1 OF 4
FILE: 7351MTM	DRN. BY: JCB	REV.:	
	CKD. BY: JCF		
		CLARK COUNTY, NEVADA RECORDS DEBBIE CONWAY, RECORDER FEE \$ _____ DEPUTY _____	