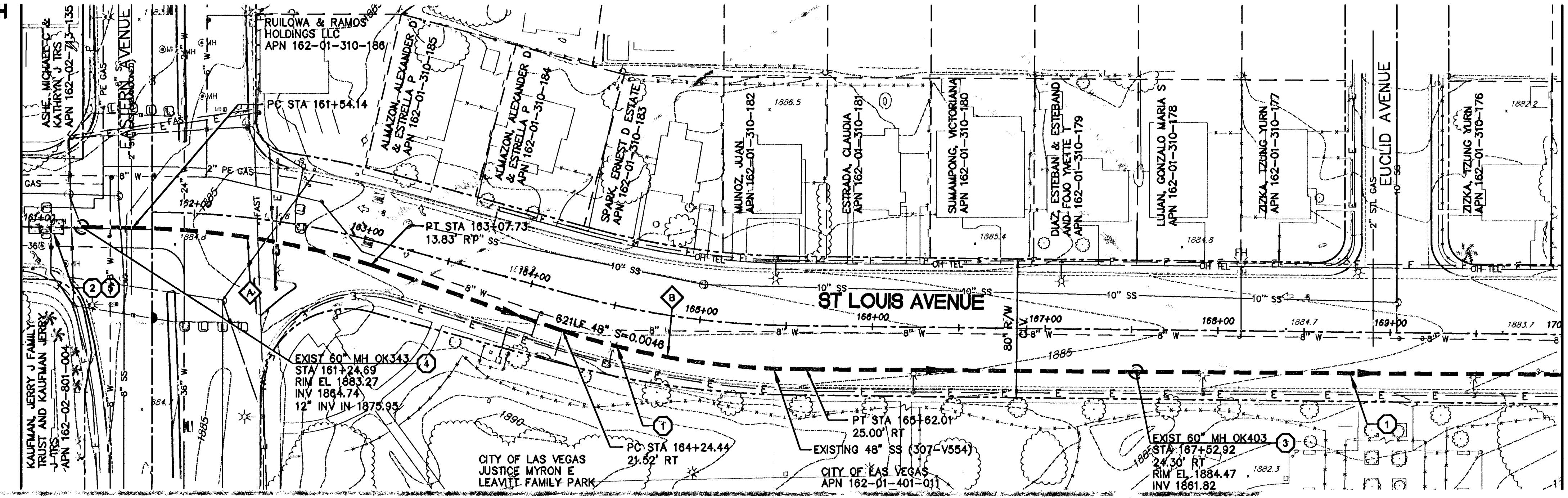
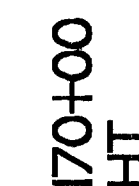
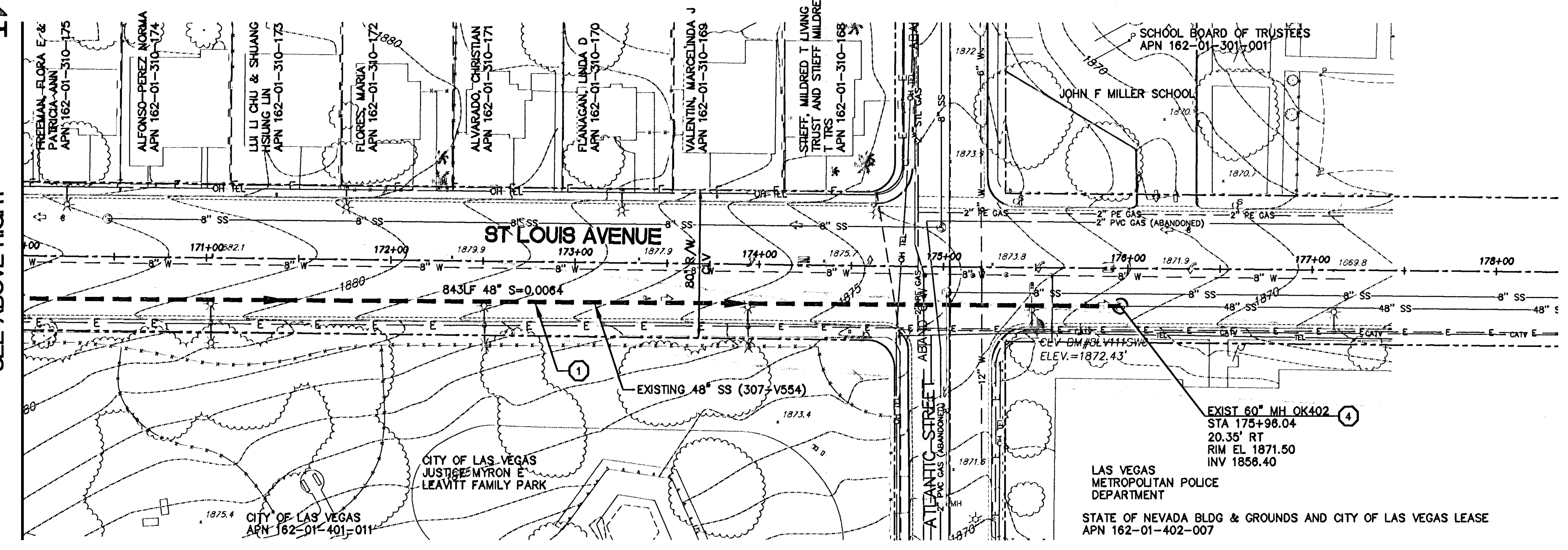


11/8/10 125333

C:\PW\_WORKING\PROJECTS\PHOENIX\DO115425\CB.DWG



MATCH LINE - STA 170+00  
SEE BELOW LEFT



MATCH LINE - STA 170+00  
SEE ABOVE RIGHT

GRAPHIC SCALE  
( IN FEET )  
1 inch = 40 ft.

Call before you Dig  
1-800-227-2200  
1-702-455-7511  
1-702-455-7514

Avoid cutting overhead utility lines. It's costly.  
Call before you Overhead  
OVERHEAD SERVICE ALERT  
1-702-455-7511  
1-702-229-6611

Call before you Dig  
Under Ground  
1-702-455-7511  
1-702-229-6611

### CONSTRUCTION KEY NOTES

- 1 INSTALL CIPP LINER IN EXISTING PIPE PER DETAIL 1 / SHEET CD-3 AND SPECIFICATION SPECIAL PROVISIONS 690. REMOVE AND REINSTALL MANHOLE FRAME, COVER, GRADE RINGS, AND CONE PER SD-4 OF THE DESIGN AND CONSTRUCTION STANDARDS FOR WASTEWATER COLLECTION SYSTEMS (2009) FOR PIPE ACCESS.
- 2 SAWCUT AND REMOVE PAVEMENT, CURB, GUTTER, VALLEY GUTTER AND / OR MEDIAN ISLAND FOR TEMPORARY BYPASS PUMPING/PIPING PER DETAIL 1 / SHEET CD-1. RESTORE SURFACE PER DETAILS ON CD-2 AND IN ACCORDANCE WITH SPECIAL PROVISION 208 FOLLOWING REMOVAL OF BYPASS PIPING.
- 3 REHABILITATE MANHOLE WITH COATING SYSTEM PER DETAIL 2 / SHEET CD-3 AND IN ACCORDANCE WITH SPECIAL PROVISION 691.
- 4 FOR CIPP LINER TERMINATION AND MANHOLE REHABILITATION SEE DETAIL 3 / SHEET CD-3.
- 5 CONSTRUCT BYPASS PIT PER DETAIL 3 / SHEET CD-1. PIT LENGTH AND WIDTH AS NECESSARY. LOCATION SHOWN IS APPROXIMATE ONLY. CONTRACTOR SHALL DETERMINE EXACT LOCATION.
- 6 INSTALL 48" FRPMP IN EXISTING PIPE USING SLIPLINING METHOD PER SECTION B / SHEET CD-4 AND SPECIAL PROVISION 690A.
- 7 CONSTRUCT SLIPLINING PIT PER DETAIL 1 / SHEET CD-4. PIT LENGTH AND WIDTH AS NECESSARY. LOCATION SHOWN IS APPROXIMATE ONLY. CONTRACTOR SHALL DETERMINE EXACT LOCATION.
- 8 REHABILITATE MANHOLE WITH CIPP AND SLIPLINING TRANSITION. SEE DETAIL 4 / SHEET CD-4.
- 9 REHABILITATE MANHOLE WITH SLIPLINED PIPE PER DETAIL 5 / SHEET CD-4.
- 10 CONTRACTOR SHALL INSTALL INTERMEDIATE ACCESS POINTS FOR GROUTING PER DETAIL 3 / SHEET CD-4.
- 11 CONTRACTOR SHALL REHABILITATE EXISTING DIVERSION STRUCTURE PER DETAIL 1 / SHEET S-1.
- 12 EXISTING PERMANENT FLOW METER SITE. CONTRACTOR SHALL NOTIFY CITY OF LAS VEGAS TO REQUEST REMOVAL 2 WEEKS (MIN) PRIOR TO WORK.
- 13 CONSTRUCT NEW 72" DIAMETER MANHOLE PER SD-1A AND SD-4 OF THE DESIGN AND CONSTRUCTION STANDARDS FOR WASTEWATER COLLECTION SYSTEMS (2009) AND IN ACCORDANCE WITH THE SPECIAL PROVISIONS. COAT MANHOLE WITH COATING IN ACCORDANCE WITH SPECIAL PROVISION 691.

### PIPELINE CURVE DATA

$R = 500.00'$ $I = 18'03'53"$ $L = 140.19'$	$R = 451.17'$ $I = 18'11'18"$ $L = 143.63'$
---	---

REFERENCE CLV DOWNTOWN SEWER INTERCEPTOR  
PROJECT NO. 307-V554, DWG NO. 21-1-45

CAROLLO ENGINEERS, INC. ASSUMES NO RESPONSIBILITY FOR EXISTING UTILITY LOCATIONS OR ELEVATIONS. THE UTILITIES SHOWN ON THE DRAWINGS HAVE BEEN PLOTTED FROM THE BEST AVAILABLE INFORMATION. IT IS THE CONTRACTOR'S RESPONSIBILITY TO FIELD VERIFY ALL EXISTING SITE CONDITIONS, AND THE LOCATION AND ELEVATION OF ALL UTILITIES PRIOR TO THE COMMENCEMENT OF ANY CONSTRUCTION. IF A CONFLICT EXISTS BETWEEN WHAT IS SHOWN ON THE DRAWINGS AND WHAT EXISTS IN THE FIELD REQUIRING DESIGN CHANGES IN ORDER FOR CONSTRUCTION TO PROCEED, THE CONTRACTOR SHALL NOTIFY THE ENGINEER IMMEDIATELY.



NO.	DATE	DESCRIPTION	APP'D

DEPARTMENT OF PUBLIC WORKS  
CAPITAL PROJECT MANAGEMENT

CITY ENGINEER: CHER L. EDLEMAN, P.E.  
PROGRAM MANAGER: TIM PARKS, P.E.

DESIGNED BY: GAG  
DRAWN BY: PAT  
CHECKED BY: TT

DATE: NOVEMBER 2010

DOWNTOWN INTERCEPTOR  
SEWER REHABILITATION

ST LOUIS AVENUE  
STA 161+24 TO STA 175+96

TITLE: SHEET:

Sheet  
C-8  
13 of 34  
DRAWING NO.  
307V1050