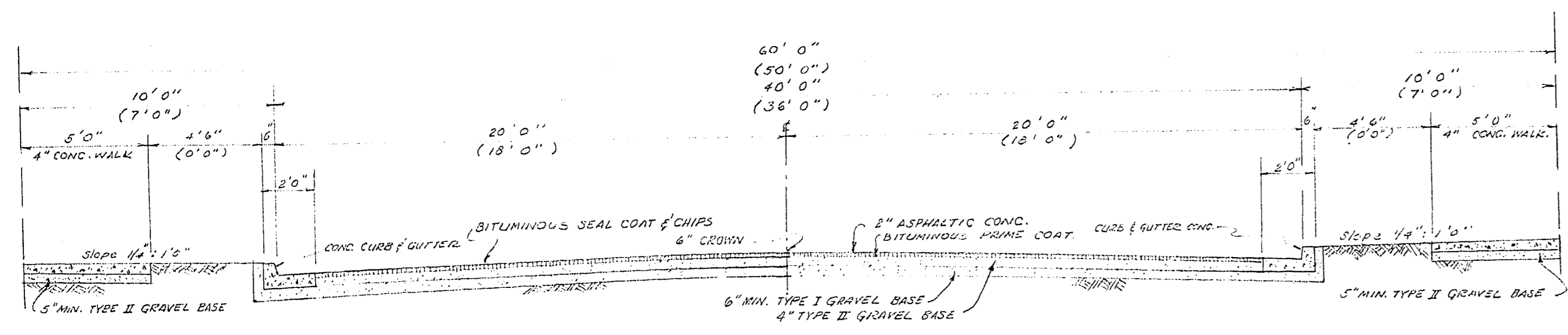
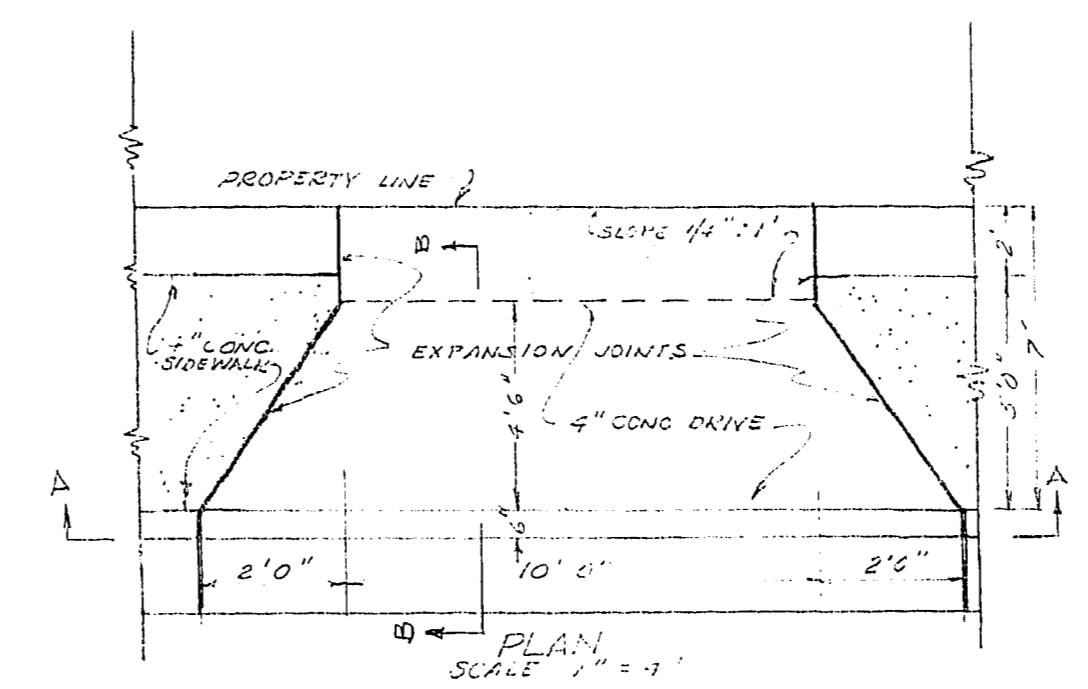


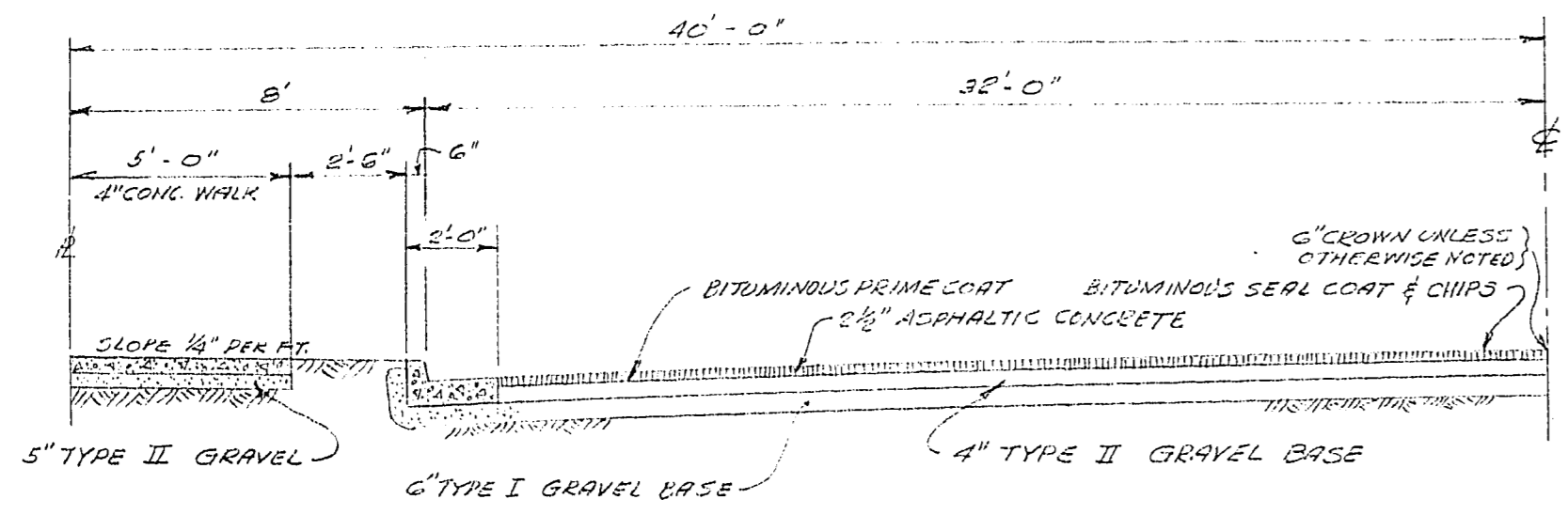
ESTIMATED QUANTITIES	
ITEM	QUANTITY
EXCAVATION	33,000 C.Y.
FILL	17,000 C.Y.
2" ASPHALTIC CONCRETE	127,350 S.F.
BITUMINOUS PRIME COAT	3400 GAL
BITUMINOUS SEAL COAT	1700 GAL
GRAVEL BASE (INCL. S.W. & CURB)	4,900 C.Y.
CURB & GUTTER	7,643 L.F.
SIDE WALK	55,215 S.F.
VALLEY GUTTER	1,746 S.F.
DRIVE APPROACH	5,550 S.F.
2 1/2" ASPHALTIC CONCRETE	25,190 S.F.
WATER	
6" MAIN	4448 L.F.
FIRE HYDRANTS	12 EA.
6" GATE VALVES	8 EA.
8" MAIN	0
8" GATE VALVES	0



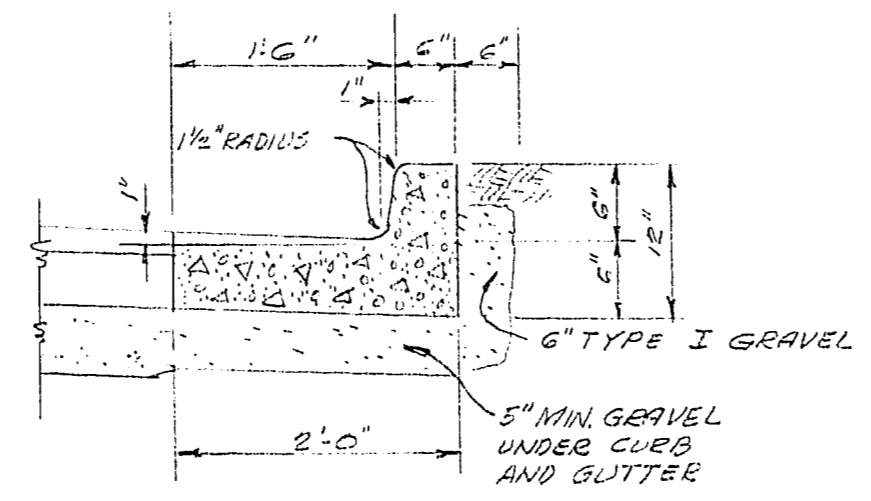
TYPICAL SECTION
ALL STREETS WITHIN TRACT
(DIMENSIONS FOR 50' RIGHT OF WAY IN PARENTHESES)
SCALE 1" = 4'-0"



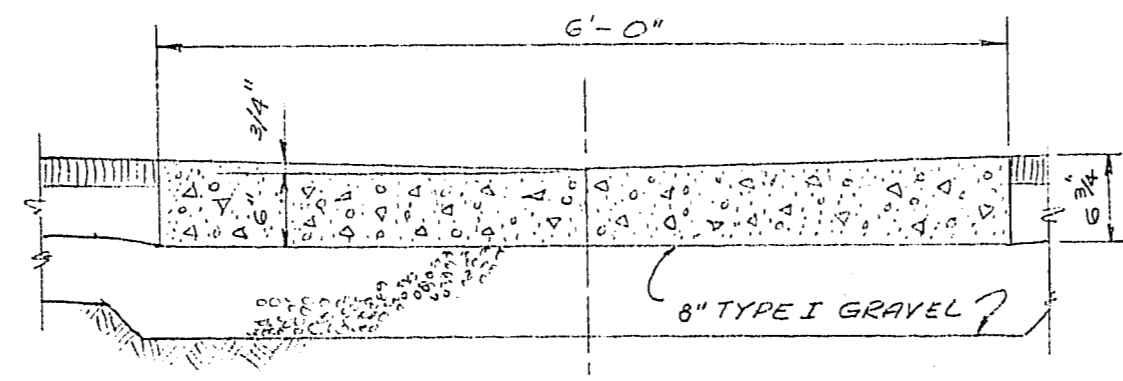
CURB AT DRIVEWAYS
(50' R.W.)



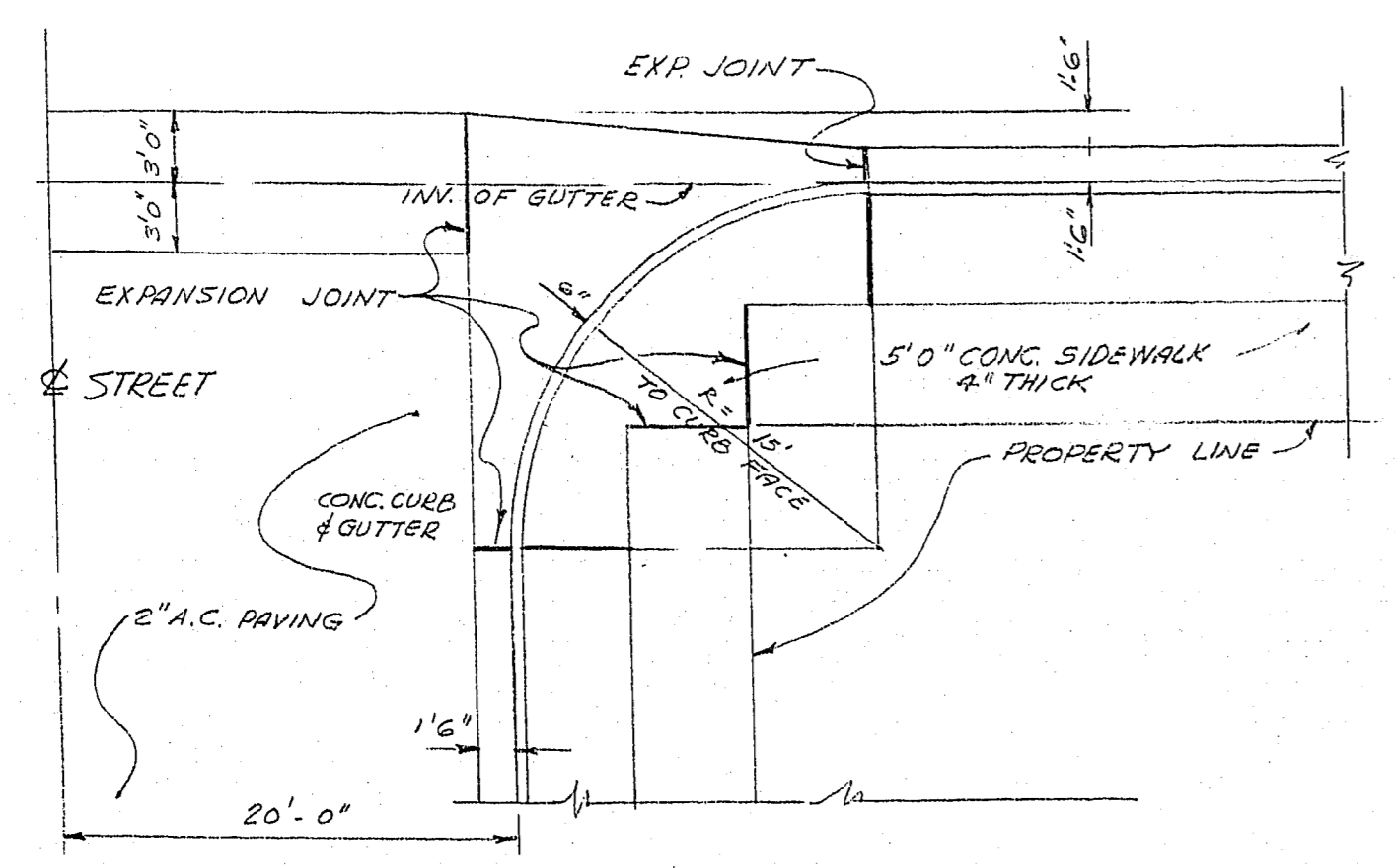
TYPICAL PART SECTION ST. LOUIS AVENUE
NOT TO SCALE



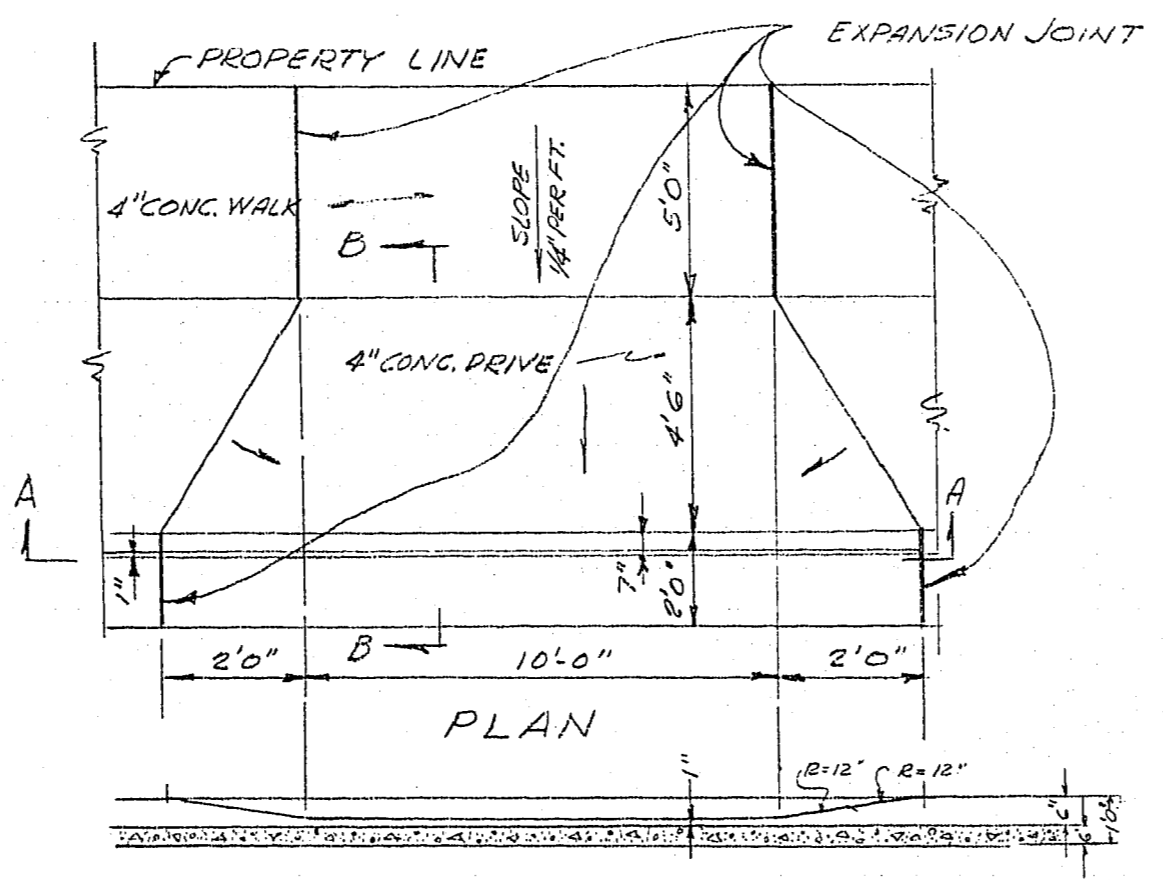
TYPICAL CONCRETE CURB & GUTTER
(ALL STREETS)
SCALE 3/4" = 1'-0"



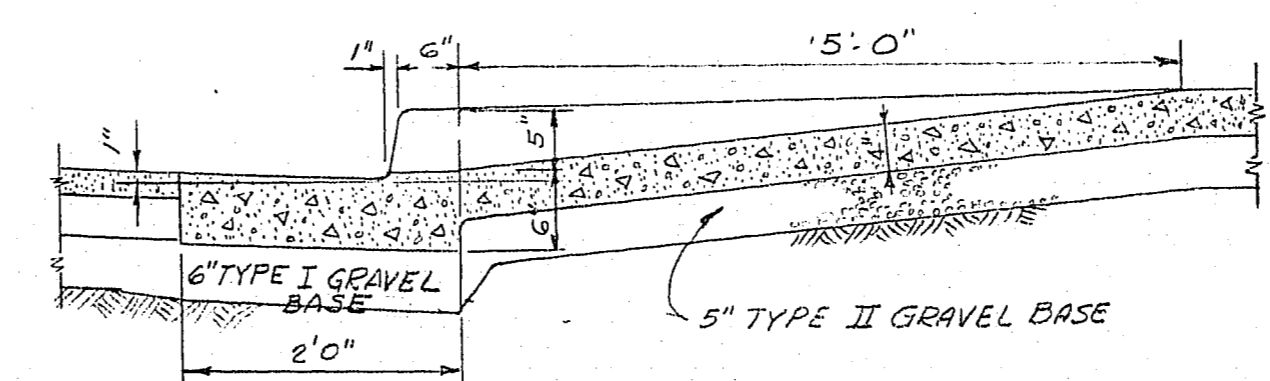
CONCRETE VALLEY GUTTER
SCALE 3/4" = 1'-0"



PLAN OF VALLEY GUTTER AT CURB RETURN
SCALE 1/8" = 1'-0"



ELEVATION AT A-A
SCALE 1/4" = 1'-0"
CURB AT DRIVEWAYS
(60' R.W.)



SECTION B-B
SCALE 3/4" = 1'-0"

**CITY OF LAS VEGAS
ENGINEERING DEPT.**

Approval of this plan by the City of Las Vegas, Nevada, does not relieve the Subdivider of responsibility for errors in calculation, design, or planning by the Subdivider's Engineer or Surveyor.

CHECKED BY
J.E. Stringer
J. E. STRINGER
Office Engineer

City of Las Vegas, Nevada
Office of the City Engineer
Approved by
[Signature]

BENCH MARK
CITY OF LAS VEGAS T.B.M. 25' R OF E
OAKLEY BOULEVARD @ STA. 10+05. NAIL IN
GUY POLE DESIGNATED 27-57 ELEV. 1550.746

GENERAL LAYOUT & CONSTRUCTION DETAILS		
STREET IMPROVEMENTS TYPICAL SECTIONS		
DAWSON PARK - UNIT 2		
CITY OF LAS VEGAS		STATE OF NEVADA
SCALE AS SHOWN	RAYMOND L. QUIGLEY CIVIL ENGINEER R.E. 861	DRG. NO. 1
DATE	2201 WENGERT STREET LAS VEGAS, NEVADA TEL. 6810	OF 4