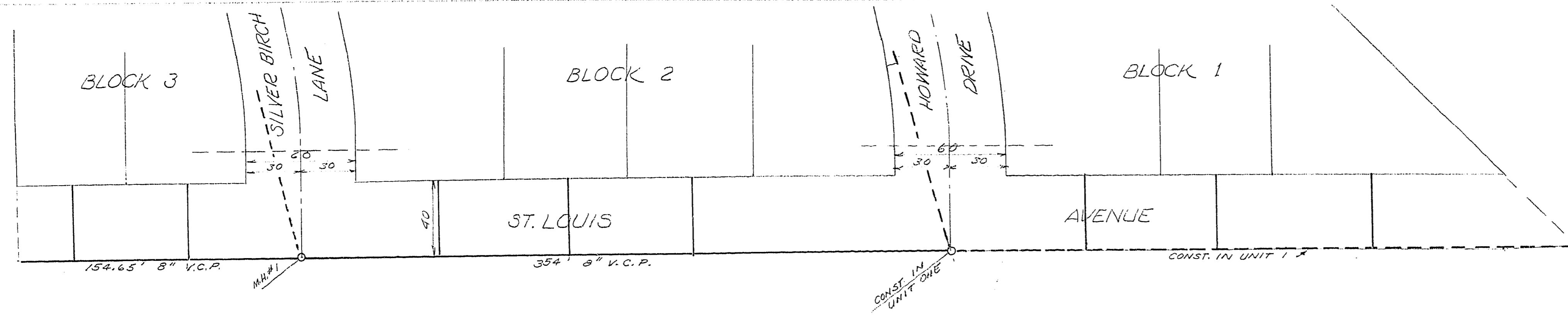


SEWER
PLAN & PROFILE
DAWSON PARK TRACT No 2
CITY OF LAS VEGAS STATE OF NEVADA

Prepared by *Raymond L. Quigley*
RAYMOND L. QUIGLEY, C.E. 861
2201 WEINGERT STREET
LAS VEGAS, NEVADA
TELEPHONE 6810

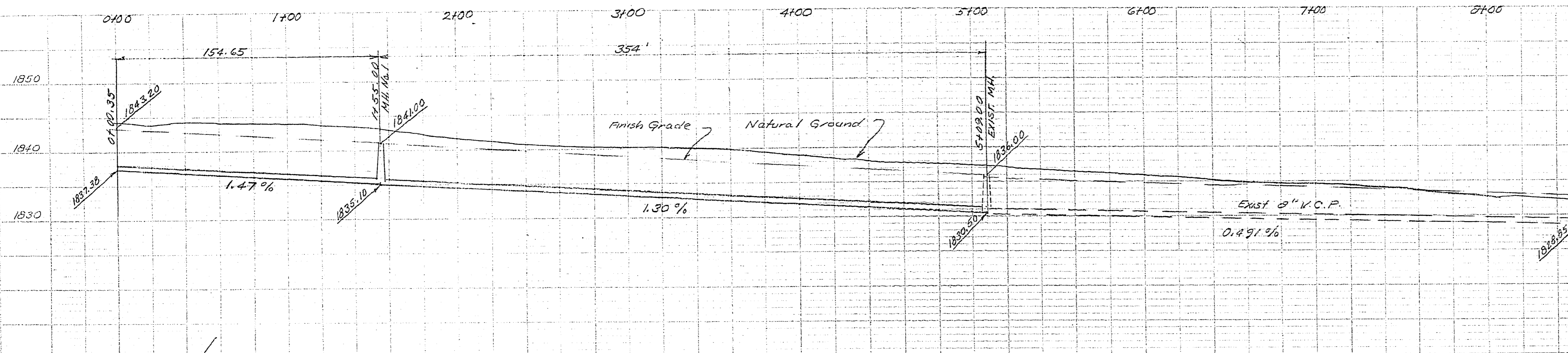
SCALE: 1" = 40' Hor.
1" = 10' Ver.

DATE: DEC. 1954



APPROVALS:

Louis A. Anton CITY ENGINEER
SUPT. OF SANITATION



**CITY OF LAS VEGAS
ENGINEERING DEPT.**

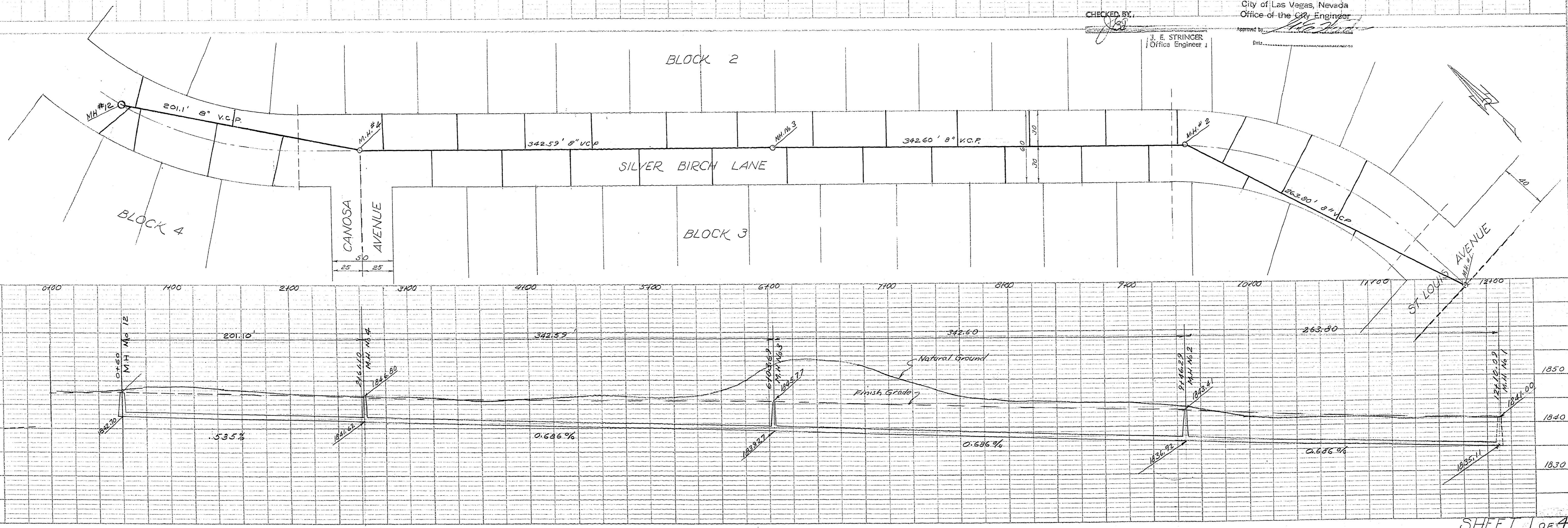
Approval of this plan by the City of Las Vegas, Nevada, does not relieve the Subdivider of responsibility for errors in calculation, design, or planning by the Subdivider's Engineer or Surveyor.

SEWER QUANTITIES:

8" V.C.P.	3600 L.F.
MANHOLES	12 EA.

- NOTES:
- Elev. Datum: City of Las Vegas T.B.M. 25' Int. of Oakley Blvd. @ Sta. 10+05. Nail in Guy Pole Designated 27.37 Elev. 1850.746
 - All Construction shall conform to City of Las Vegas Specifications.

CHECKED BY: *[Signature]*
City of Las Vegas, Nevada
Office of the City Engineer
Approved by: *[Signature]*
J. E. STRINGER
Office Engineer



SHEET 1 OF 4