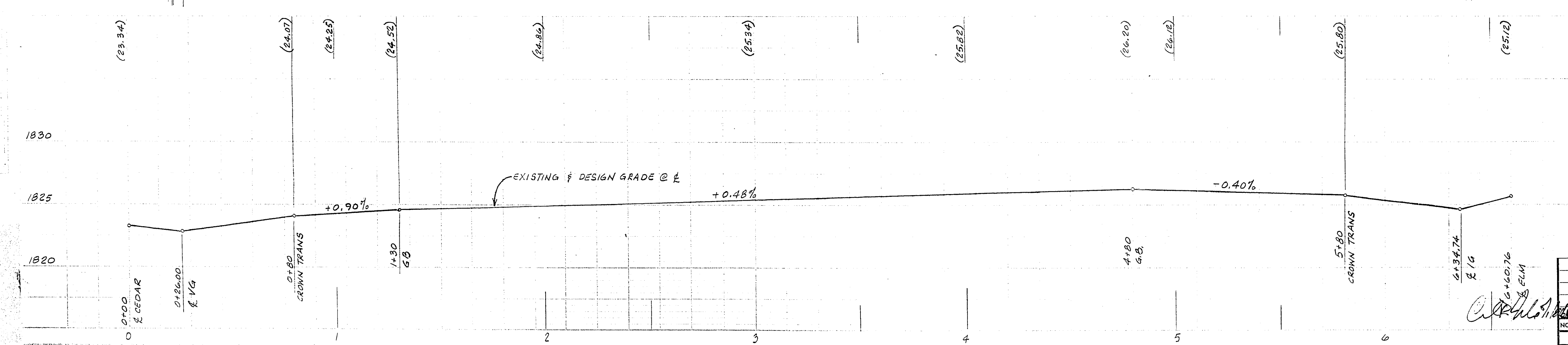
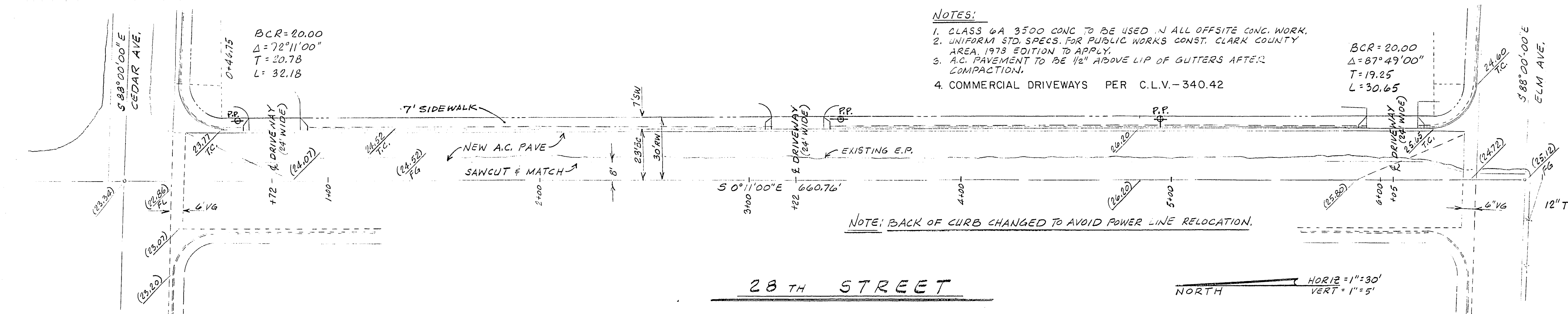
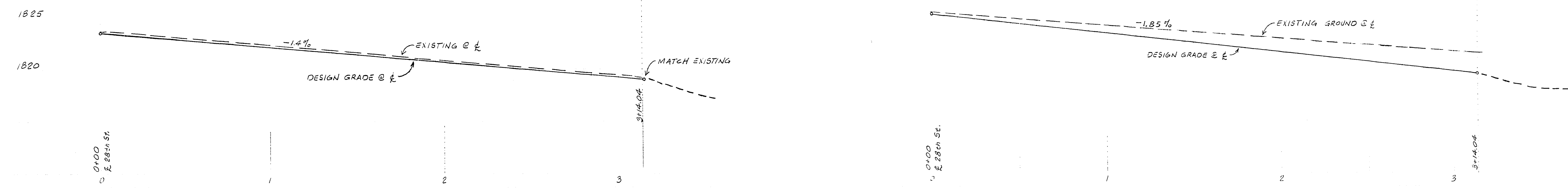
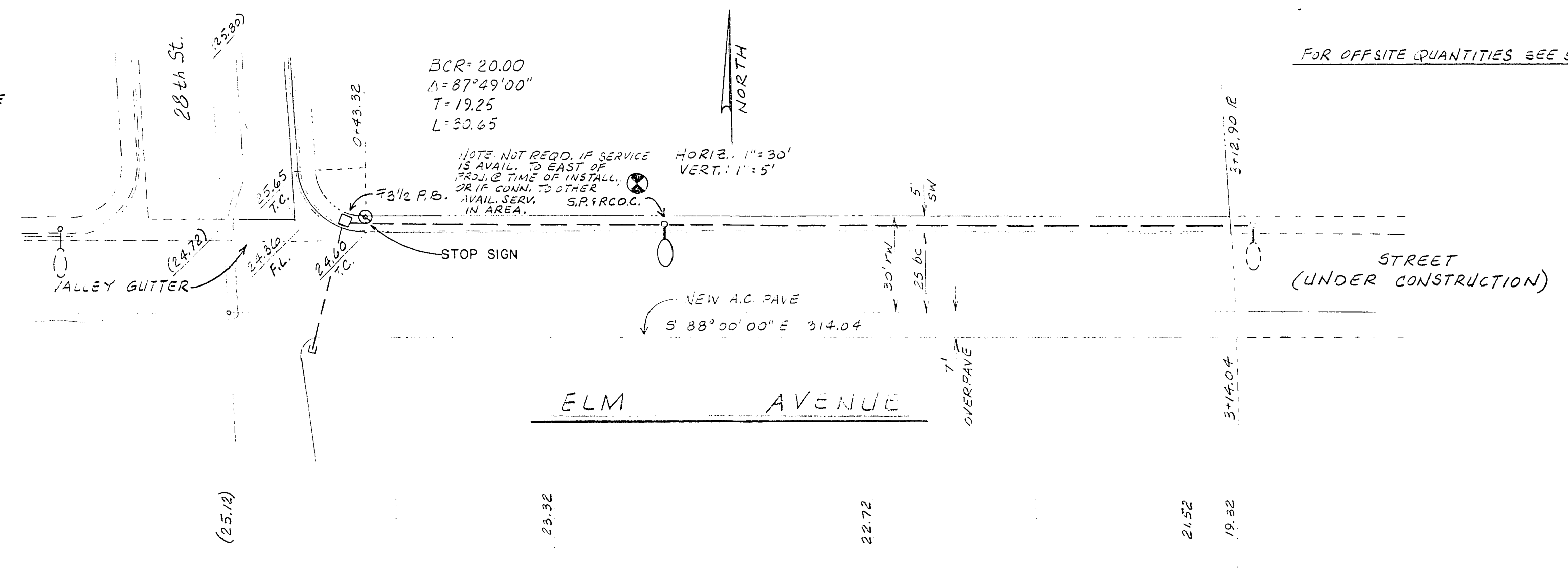
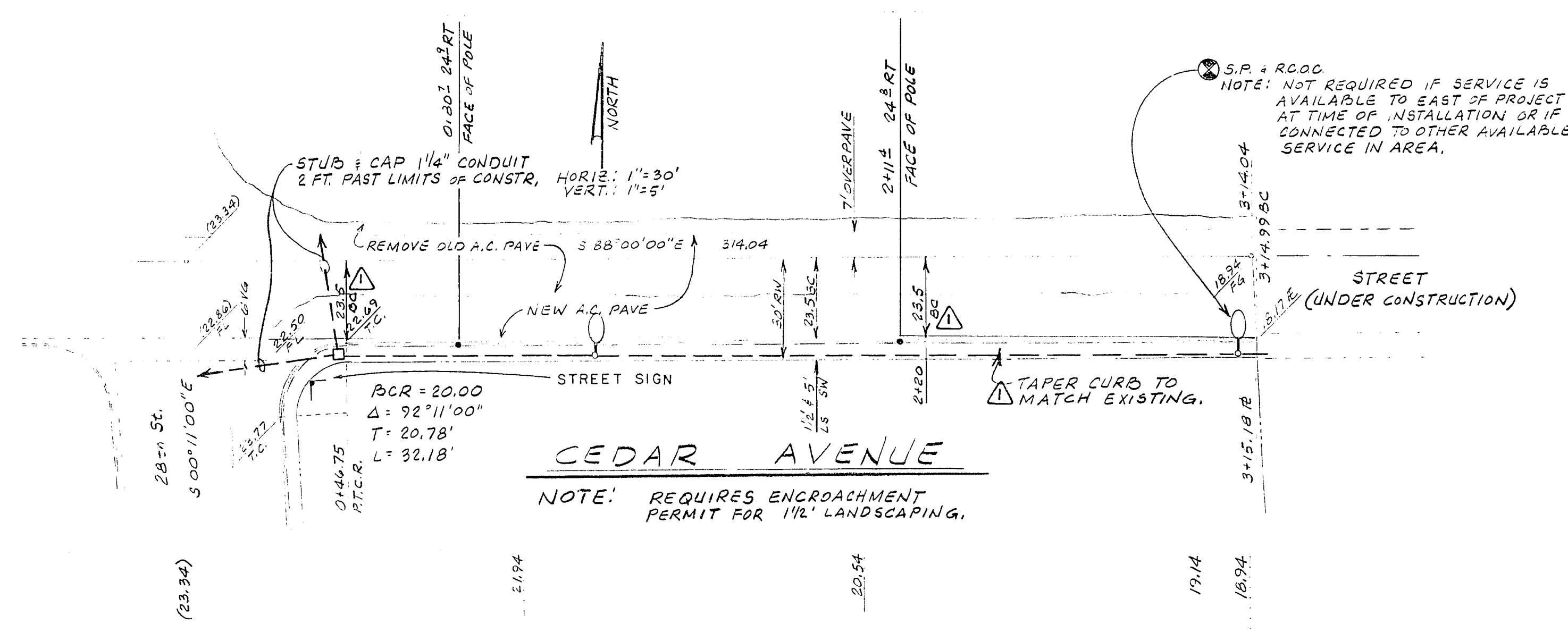
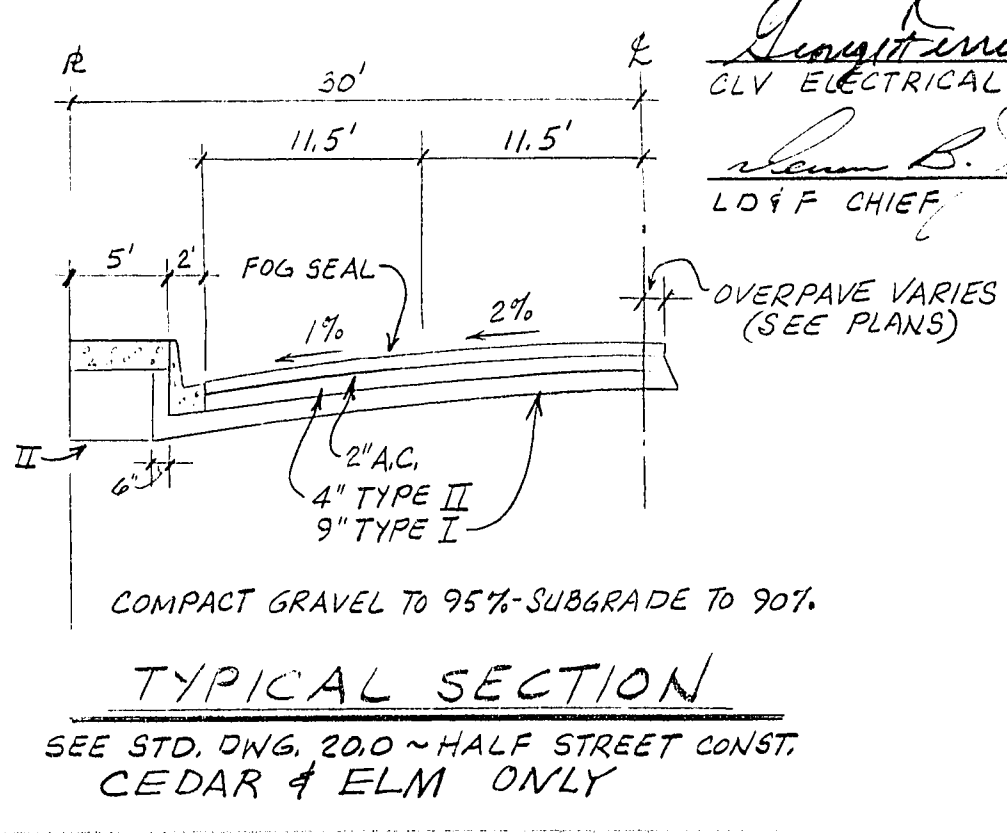


FOR OFFSITE QUANTITIES SEE SHEET 2/3



- NOTES:
- CLASS 6A 3500 CONC TO BE USED IN ALL OFFSITE CONC. WORK.
 - UNIFORM STD SPECS FOR PUBLIC WORKS CONST. CLARK COUNTY AREA 1978 EDITION TO APPLY.
 - A.C. PAVEMENT TO BE 1/2" ABOVE LIP OF GUTTERS AFTER COMPACTION.
 - COMMERCIAL DRIVEWAYS PER C.L.V.-340.42

<i>Eugene P. ...</i>	1-12-84
CLV ELECTRICAL COORDINATOR	DATE
<i>Joseph ...</i>	1-13-84
CLV ELECTRICAL SUPERVISOR	DATE
<i>Alan B. ...</i>	2/7/84
LOF CHIEF	DATE



ELMWOOD APARTMENTS
 140 VEGAS - 111 ADA
 STREET PLAN & PROFILE
 OFFICE

NO.	BY	DATE	DISCUSSION	CHKD	APPD
1	WJC	11/83	REV CURB - CEDAR AVE.		

DRAWN BY *WJC* APPROVED BY *WJC*
 JOB NO. 8517-001 DATE Nov. 1983

CHILTON ENGINEERING 83012 3/3