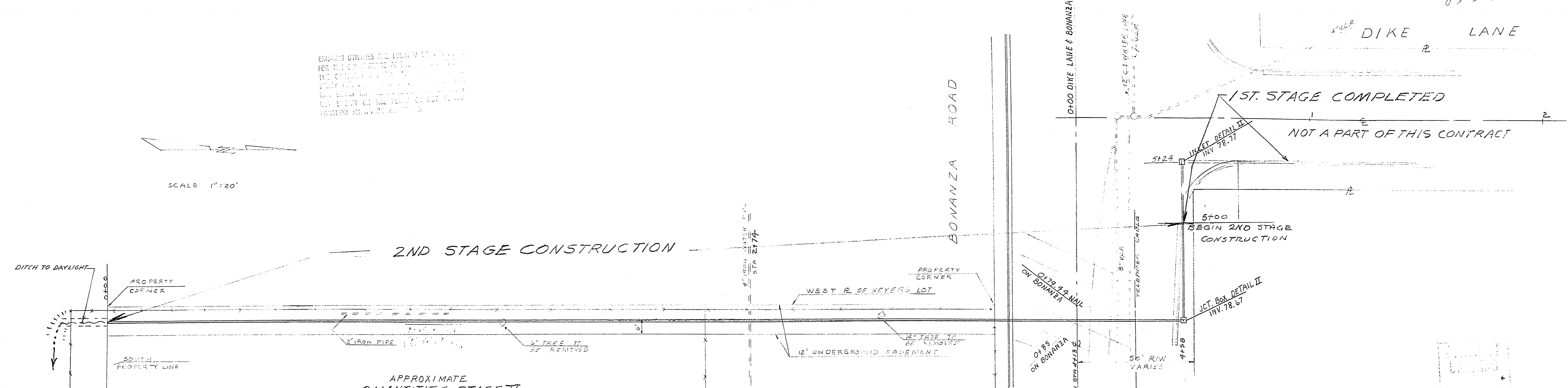


236.137

EXISTING UTILITIES AND LOCATIONS OF PROPOSED DRAINAGE STRUCTURES ARE SHOWN FOR THE CONSTRUCTION OF THIS DRAINAGE SYSTEM. THE CONTRACTOR SHALL VERIFY THE LOCATION AND DEPTH OF ALL UTILITIES PRIOR TO CONSTRUCTION. THE CONTRACTOR SHALL BE RESPONSIBLE FOR THE PROTECTION OF ALL UTILITIES AND STRUCTURES TO REMAIN.

SCALE 1"=20'



APPROXIMATE QUANTITIES STAGE II

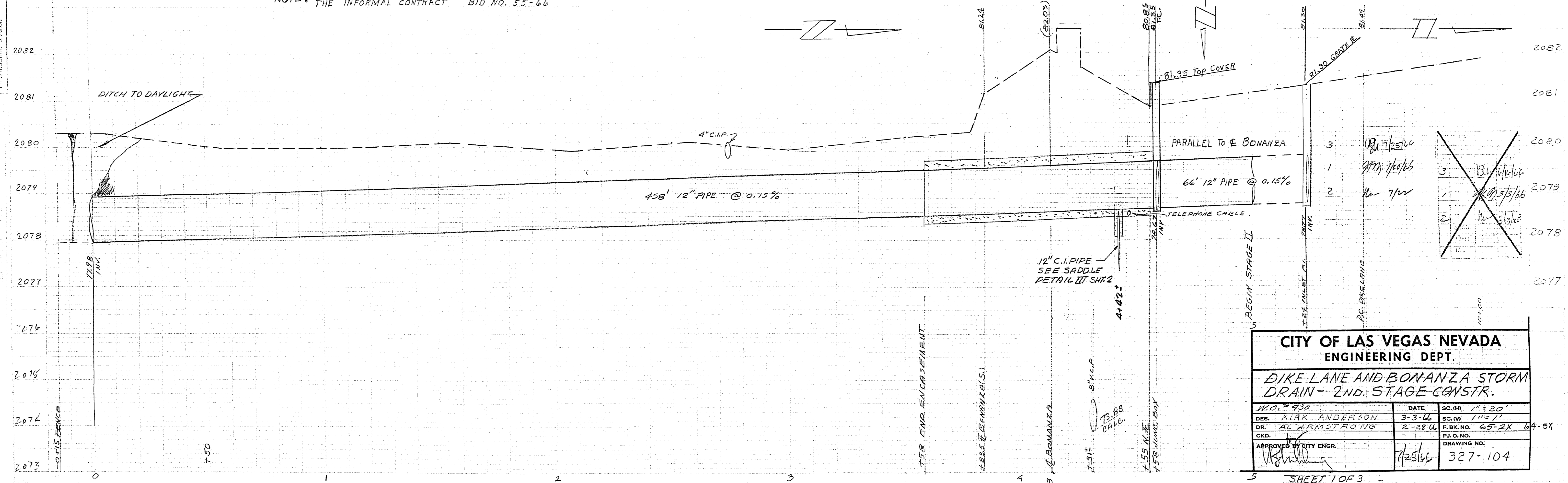
ITEM	EXPLANATION	QUANTITY	UNIT
1	12" R.C.P CLASS III	498	L.F.
2	JUNCTION BOX	1	EA
3	CONCRETE SADDLE	1	EA
4	TREE REMOVAL	2	EA
5	TEMPORARY BARRICADE		LS
6	PAVEMENT REPLACED	65	L.F.
7	CONCRETE ENCASEMENT	80	L.F.

NOTES:
 1. ALL PIPE MUST HAVE TONGUE AND GROOVE MORTAR JOINTS
 2. EXCEPT FROM STA. 3+78 TO STA. 4+58 ALL PIPE SHALL BE 12" NON-REINFORCED CONCRETE PIPE, OR 12" RCP CLASS III WALL MEETING A.S.T.M. C-76 (DEPENDING ON BID PRICES)

NOTE: FOR APPROXIMATE QUANTITIES ALTERNATE No. 1 & 2 SEE THE INFORMAL CONTRACT BID NO. 55-66

B.M. BONANZA ROAD & SUNNY PLACE
 S.E. COR. 1.5' NORTH OF SHINER ON POWER POLE.
 C.I.V. B.M. NO 222 ELEV 2057.989

FIELD CHECK DATE



CITY OF LAS VEGAS NEVADA
ENGINEERING DEPT.

DIKE LANE AND BONANZA STORM DRAIN - 2ND. STAGE CONSTR.

NO. # 930	DATE	SC. (H) 1"=20'
DES. KIRK ANDERSON	3-3-66	SC. (V) 1"=1'
DR. AL ARMSTRONG	2-28-66	F.B.K. NO. 65-2X 64-5X
CKD.		P.I.O. NO.
APPROVED BY CITY ENGR.		DRAWING NO.
		327-104