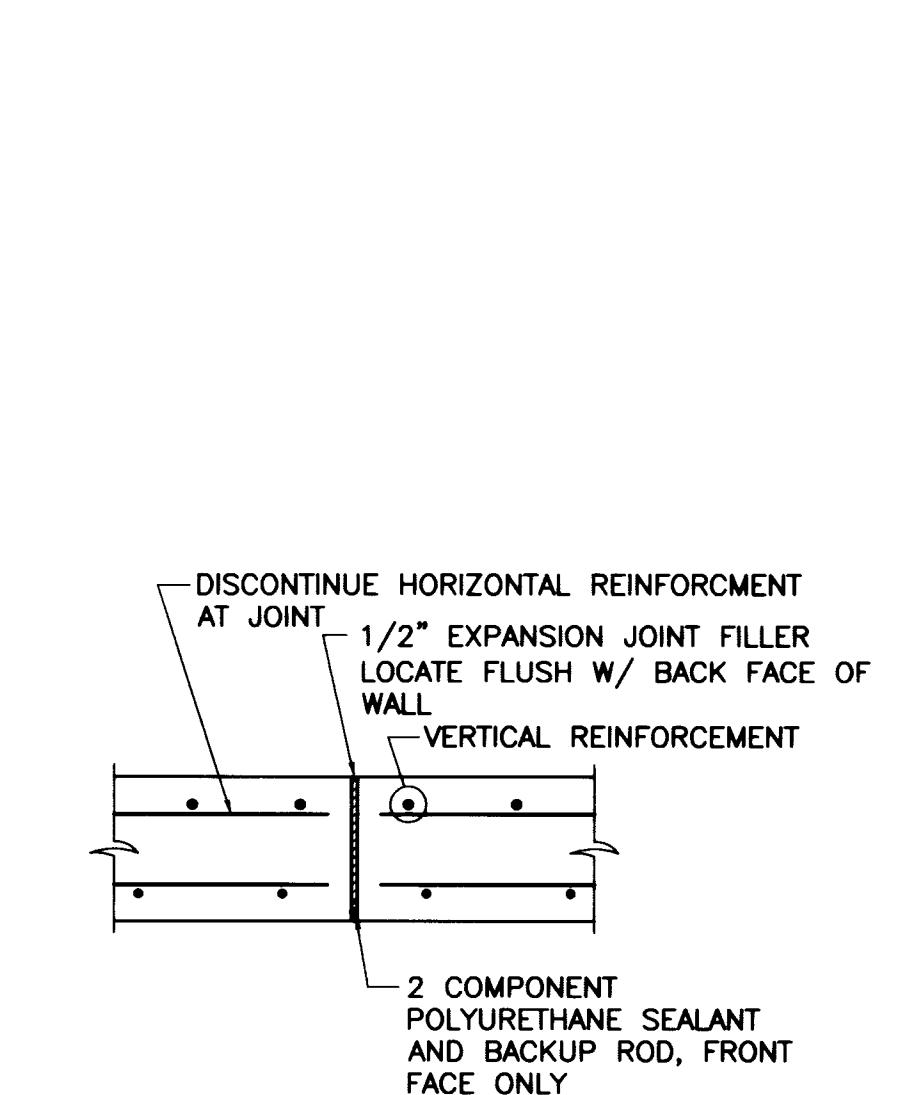
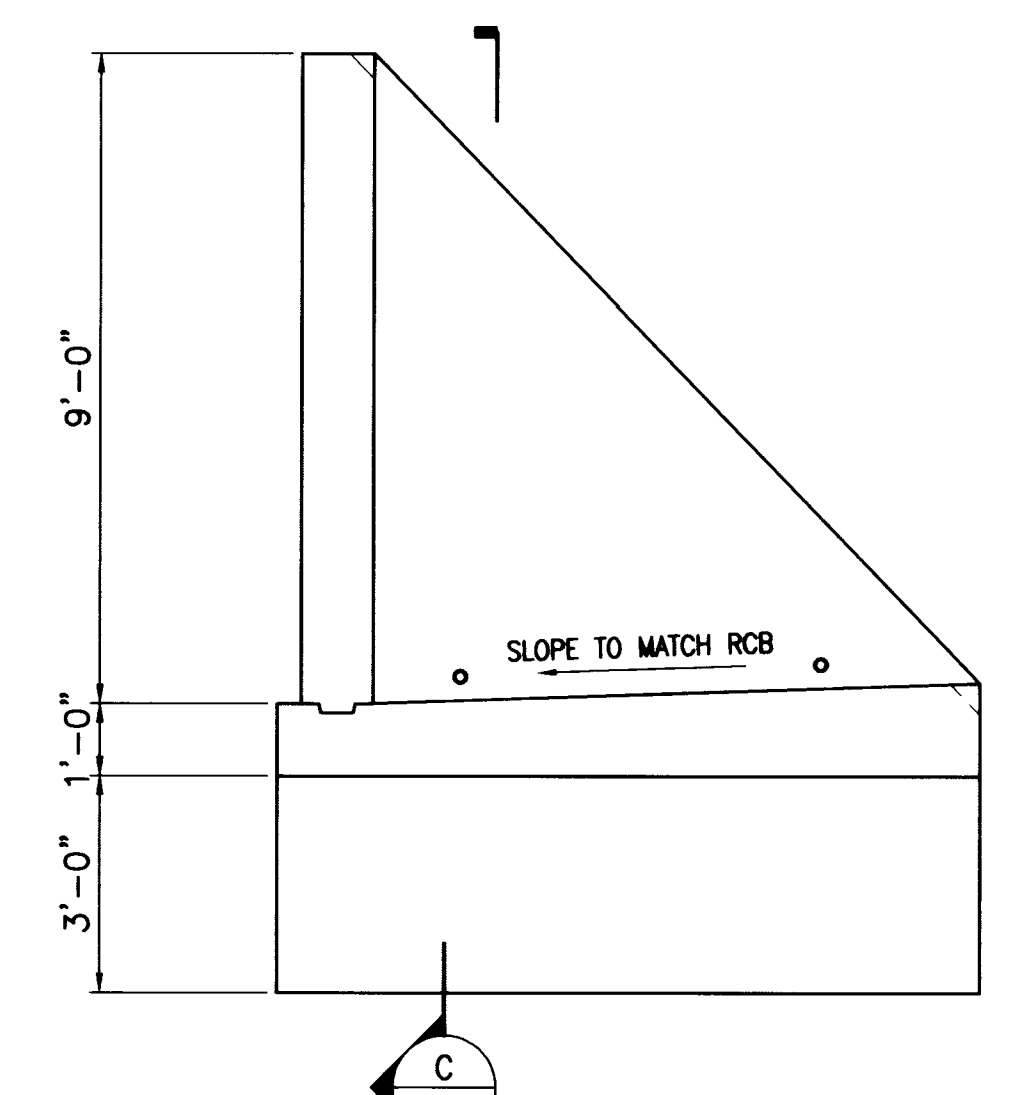
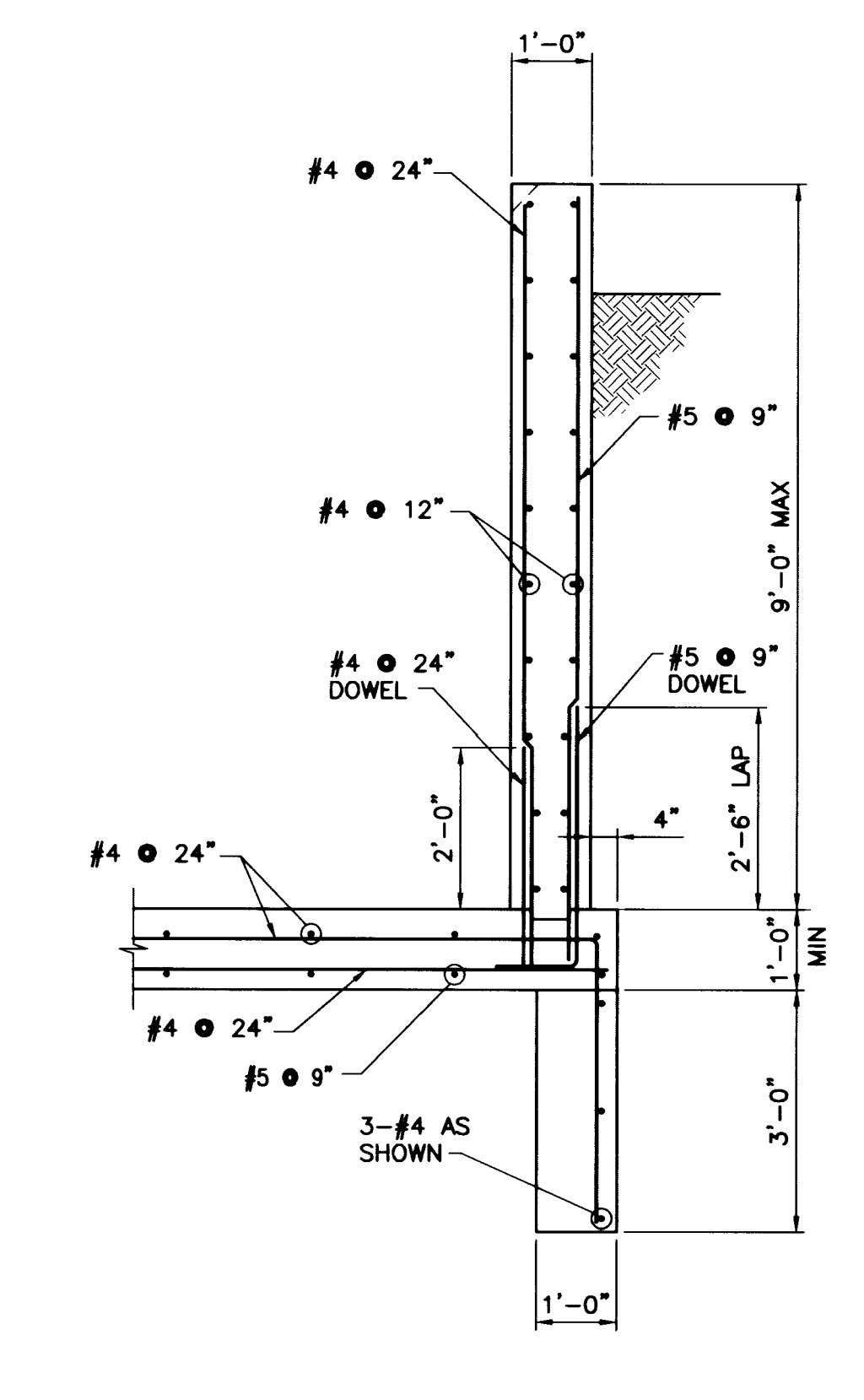
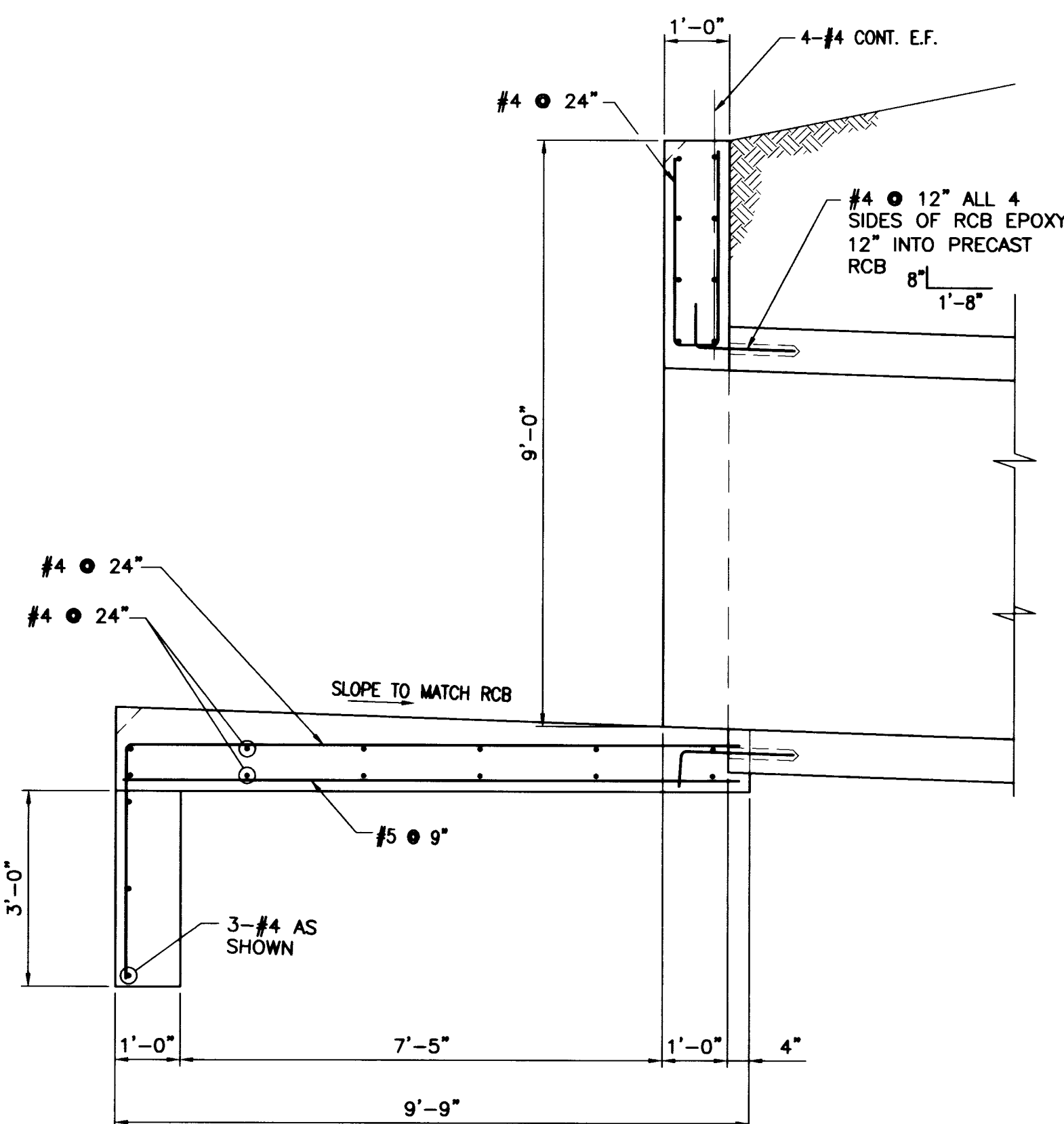
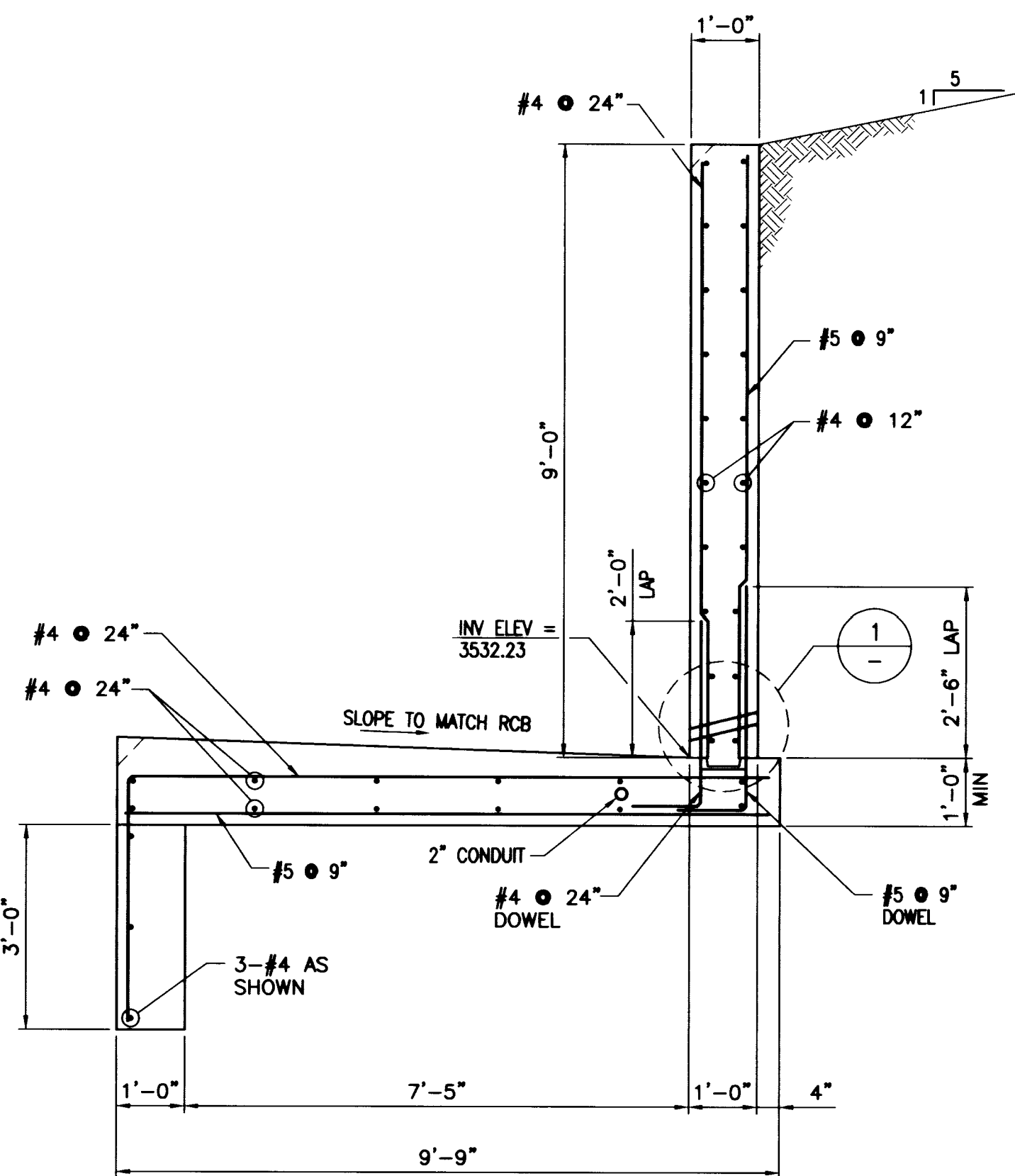
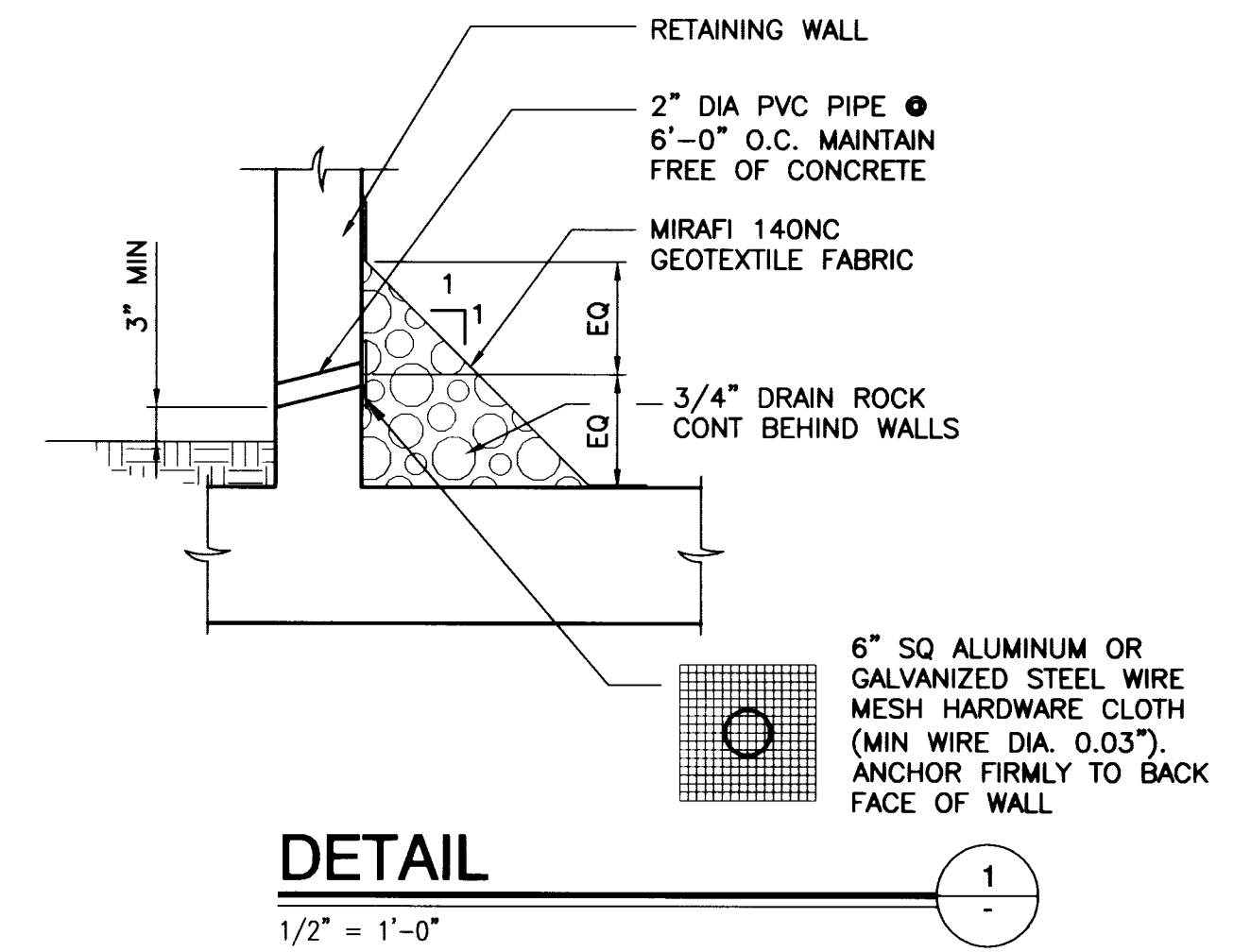
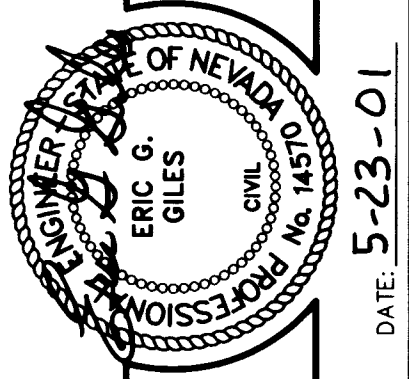


NOTE:
TRASH RACK IS NOT SHOWN FOR CLARITY
SEE SECTIONS A/D-4 AND B/D-4 FOR BEVEL DETAIL
CHAINLINK FENCE IS NOT SHOWN FOR CLARITY
SEE SECTION D/D-4



GENERAL STRUCTURAL NOTES:

1. CONCRETE SHALL HAVE A MINIMUM ULTIMATE COMPRESSIVE STRENGTH OF 4500 PSI AT 28 DAYS USING TYPE V CEMENT PER ASTM C-150. ALL EXPOSED CORNERS SHALL BE BEVELED 3/4" UNLESS OTHERWISE NOTED.
2. CONCRETE FORM TOLERANCES SHALL BE WITHIN THE SET STANDARDS OF THE AMERICAN CONCRETE INSTITUTE.
3. ALL REINFORCING STEEL, DOWELS, AND OTHER INSERTS SHALL BE SECURED IN POSITION AND INSPECTED BY THE LOCAL BUILDING DEPARTMENT INSPECTOR PRIOR TO THE POURING OF ANY CONCRETE.
4. REINFORCING STEEL SHALL CONFORM TO ASTM A-615 GRADE 60.
5. UNLESS OTHERWISE NOTED, ALL MATERIALS AND CONSTRUCTION SHALL CONFORM TO THE AASHTO STANDARD SPECIFICATIONS FOR HIGHWAY BRIDGES, 16TH EDITION AND PER STANDARD SPECIFICATIONS FOR THE LOCAL BUILDING DEPARTMENT.
6. ALL DETAILING FABRICATION AND ERECTION OF REINFORCING STEEL SHALL CONFORM TO THE ACI MANUAL OF STANDARD PRACTICE FOR DETAILING REINFORCED CONCRETE STRUCTURES ACI 315.
7. REINFORCING SHALL HAVE MINIMUM CONCRETE COVER AS SPECIFIED IN THE DETAILS AND/OR SHALL CONFORM TO THE LATEST EDITION OF THE AASHTO MANUAL.
8. ALL WALLS ARE SUBJECT TO APPROVAL BY THE BUILDING DEPARTMENT.
9. HORIZONTAL WALL REINFORCEMENT SHALL NOT BE CONTINUOUS THROUGH WALL CONSTRUCTION JOINTS.
10. BACKFILL BEHIND WALLS SHALL BE COMPACTED TO 90% OF STANDARD PROCTOR DENSITY.
11. LOCATE CONCRETE CONSTRUCTION JOINTS IN RETAINING WALL AT A MAXIMUM SPACING OF 24'-0".
12. WATERPROOFING: APPLY WATERPROOFING MATERIAL TO BACK FACE OF RETAINING WALLS. ACCEPTABLE WATERPROOFING SYSTEM PRODUCTS AND MANUFACTURERS INCLUDE: TREMPROOF 60 BY TREMCO INC., SYSTEM M BY 3M COMPANY, VULKEM 201/203 BY MAMECO INT., DURAMEN H500, V500 BY PECORA CORP., WATCHDOG FLEX/WATERPROOFING BY KOCH MATERIALS COMPANY, OR ENGINEER APPROVED EQUAL. APPLICATION OF THE WATERPROOFING SHALL BE IN ACCORDANCE WITH MANUFACTURER'S PRINTED INSTRUCTIONS, DETAILS AND MATERIALS.
13. SOILS REPORT PREPARED BY TERRACON CONSULTANTS WESTERN, INC., PROJECT NO. 64955057, DATED APRIL 4, 1995 AND ADDENDUM DATED MAY 30, 2000:
ALLOWABLE SOILS BEARING PRESSURE = 2000 PSF (MAY BE INCREASED BY 1000 PSF FOR EACH ADD'L FOOT OF EMBEDMENT.)
SOIL ACTIVE PRESSURE = 35 PCF (LEVEL)
SOIL PASSIVE PRESSURE = 250 PSF/FT
COEFFICIENT OF FRICTION = 0.40
14. BEDDING MATERIAL SHALL BE 6" OF CLARK COUNTY TYPE II AGGREGATE. THE BEDDING LAYER SHALL BE COMPACTED TO AT LEAST 95% OF THE MAXIMUM DRY DENSITY AS ESTABLISHED BY ASTM METHOD D-1557.



DESIGN: EGO	NO
DRAWN: NO	
CHECK: NO	
ISSUE DATE: 05-23-01	
PLOT DATE: 05-23-01	
PLOT TIME: 08:29:08	
REV. DATE	DESCRIPTION

G. C. WALLACE, INC.
Engineering/Architecture
EGOS, 1015 S. 10th St., Suite 101
Las Vegas, NV 89104
TELEPHONE: (702) 861-2000 FAX: (702) 864-2289
G:\2002-307\dwg\improv2\985_D003.dwg

THE HOWARD HUGHES CORPORATION
DETENTION BASIN NO. 5 EXPANSION AND DIVERSION BERM
INLET STRUCTURE

32579