

Call before you Dig
1-800-227-2600

BENCHMARK
ELEVATION = 2258.894
SET DRIVE RIVET IN A 2"x2" ALUMINUM PLATE, IN THE TOP OF THE SOUTHWEST PORTION OF A GAS COMPANY VAULT, LOCATED AT THE NORTHEAST CORNER OF THE INTERSECTION OF CRAIG ROAD AND JONES BOULEVARD, 8.5 FEET SOUTHEAST OF POWER POLE No. SMT. CO 3322.

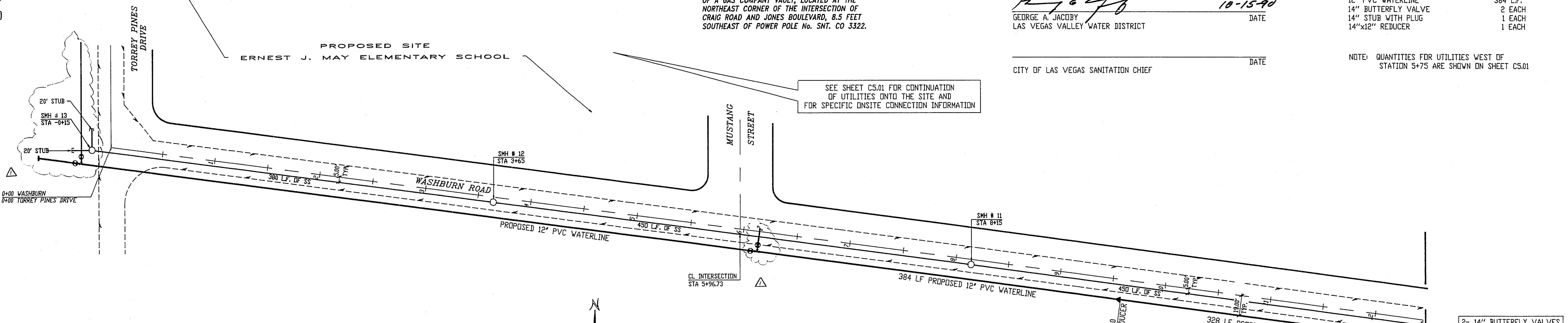
APPROVALS

GARY A. PRESSWOOD
LAS VEGAS CITY ENGINEER
DATE 10-15-90
GEORGE A. JACOBY
LAS VEGAS VALLEY WATER DISTRICT
DATE
CITY OF LAS VEGAS SANITATION CHIEF

QUANTITIES (this sheet)

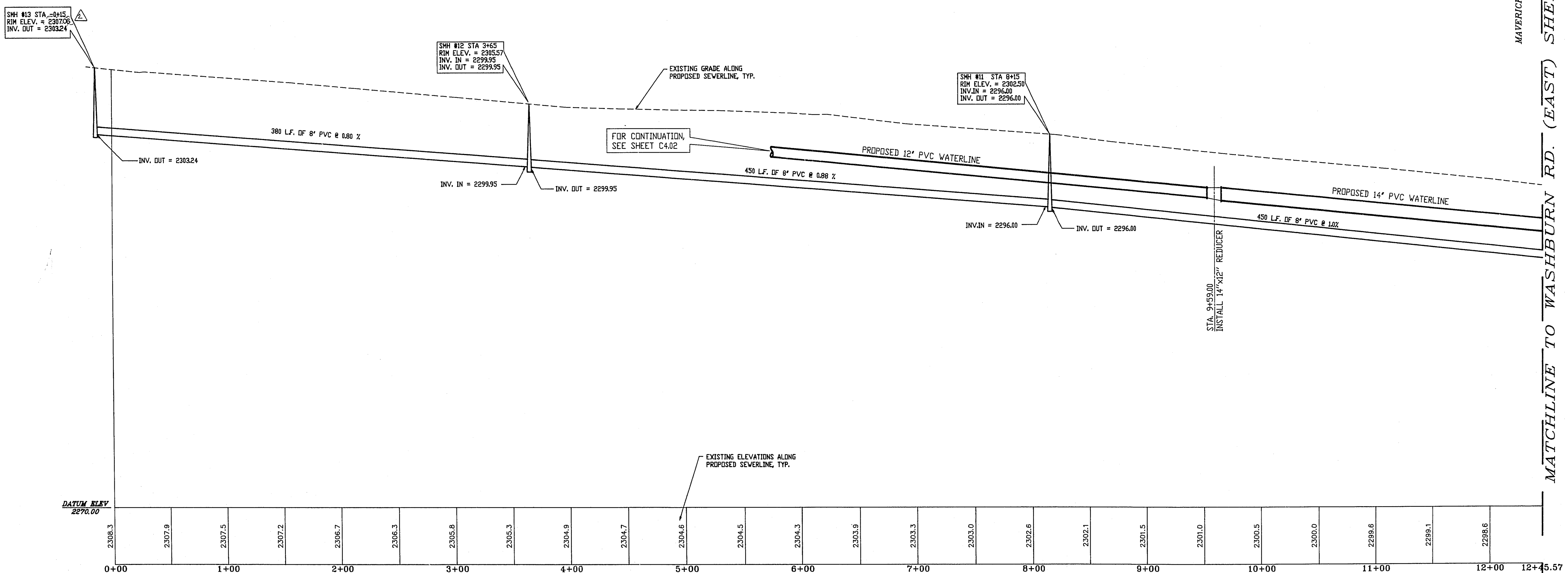
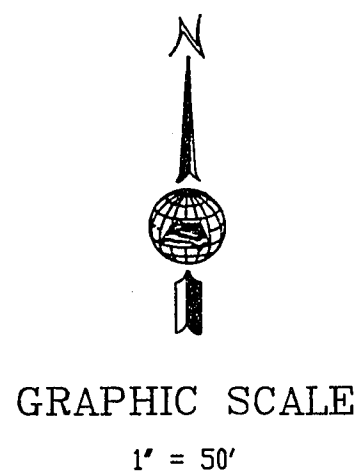
8" PVC SANITARY SEWERLINE 671 L.F.
4" DIAMETER SEWER MANHOLE 1 EACH
14" PVC WATERLINE 328 L.F.
12" PVC WATERLINE 384 L.F.
14" BUTTERFLY VALVE 2 EACH
14" STUB WITH PLUG 1 EACH
14"x12" REDUCER 1 EACH

NOTE: QUANTITIES FOR UTILITIES WEST OF STATION 5+75 ARE SHOWN ON SHEET C5.01



PLAN - CENTERLINE OF WASHBURN ROAD (WEST)

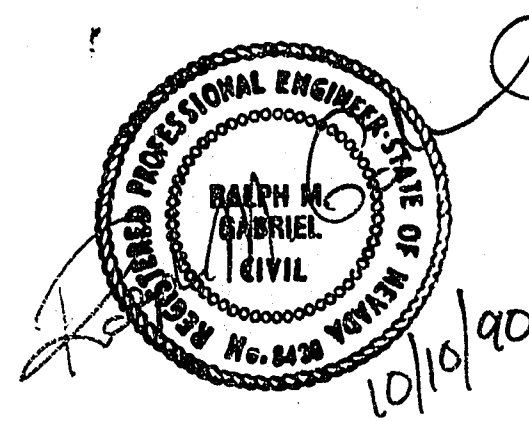
Horiz. 1"=50'



PROFILE - CENTERLINE OF WASHBURN ROAD (WEST)

Horiz. 1"=50'
Vert. 1"=5'

AS SHOWN	2084.06
Scale	7-06-90
Drawn by	FMZ
Checked by	RMS
Date	10-15-90
Revisions	NO. 1: ACQUIRED WATERLINE FROM MUSTANG TORREY PINES WATERLINE
NO. 2: REVISED MANHOLE ELEVATION	
Job Number	7108.208
Sheet Number	12
Job Title	OFFSITE UTILITIES WASHBURN ROAD (West) Alternate No. 4-A
Client	ERNEST J. MAY ELEMENTARY SCHOOL
Engineer	Church Engineering, Inc. 2909 Meade Ave. Las Vegas NV 89102 (702) 876-9020



19-310