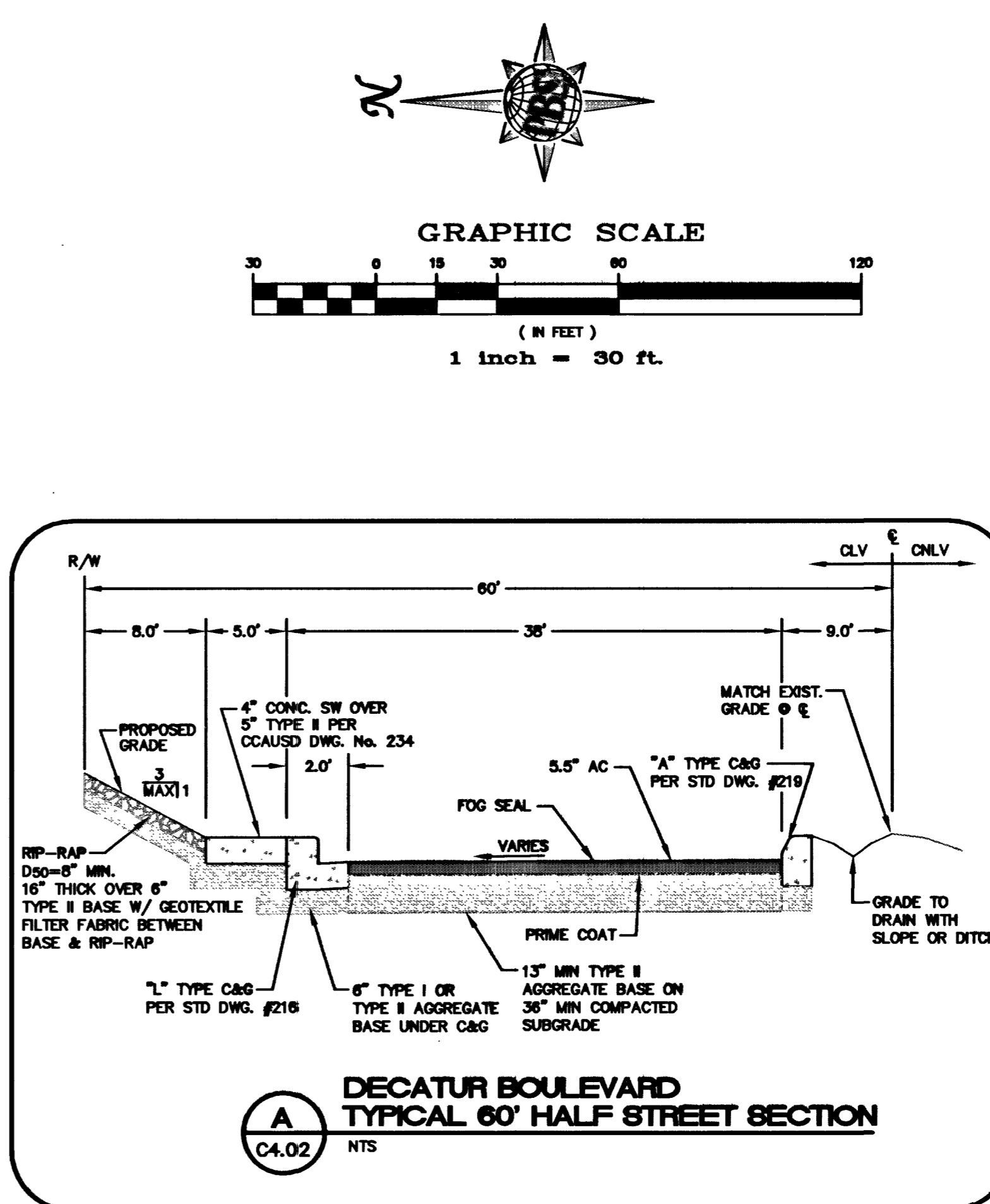
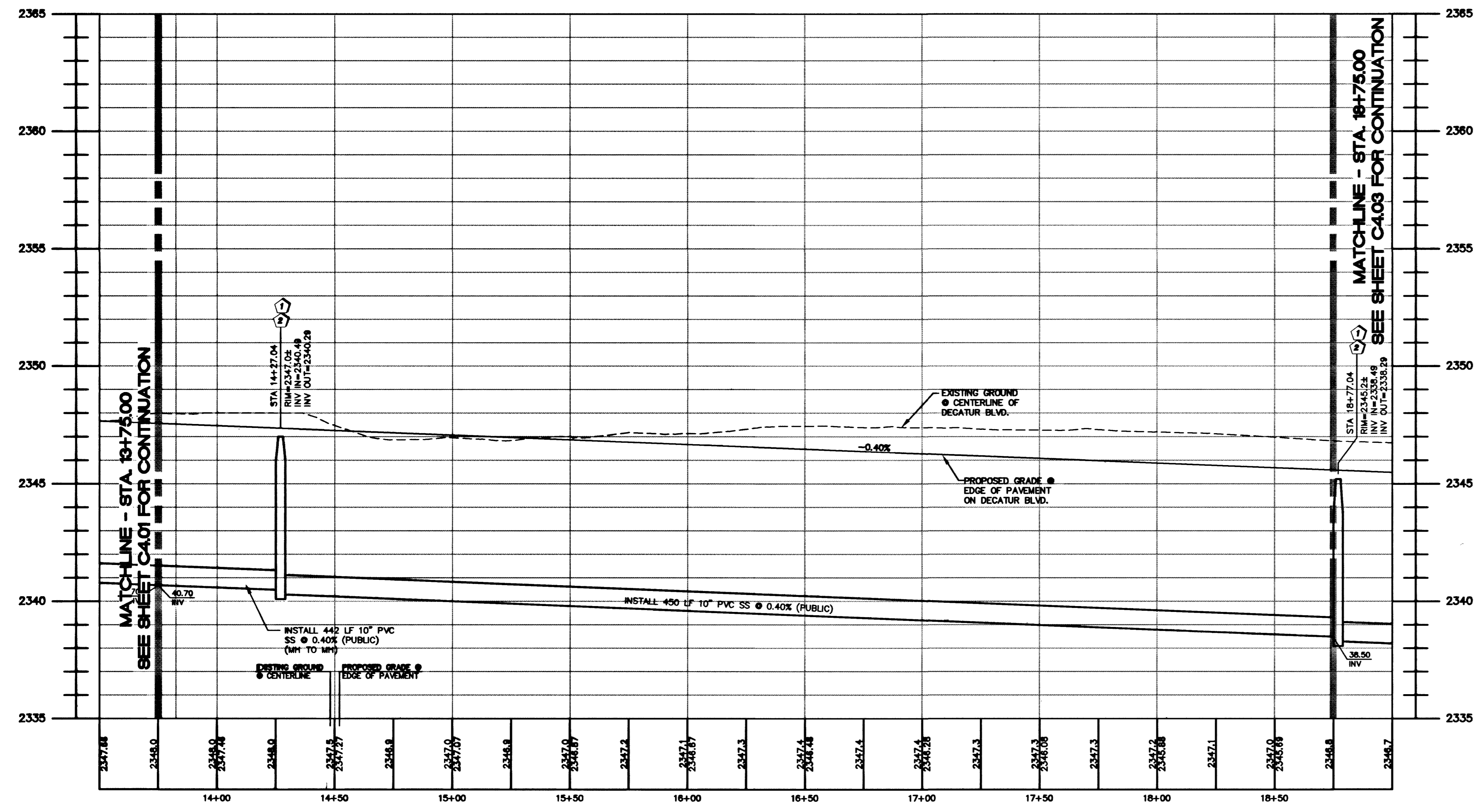
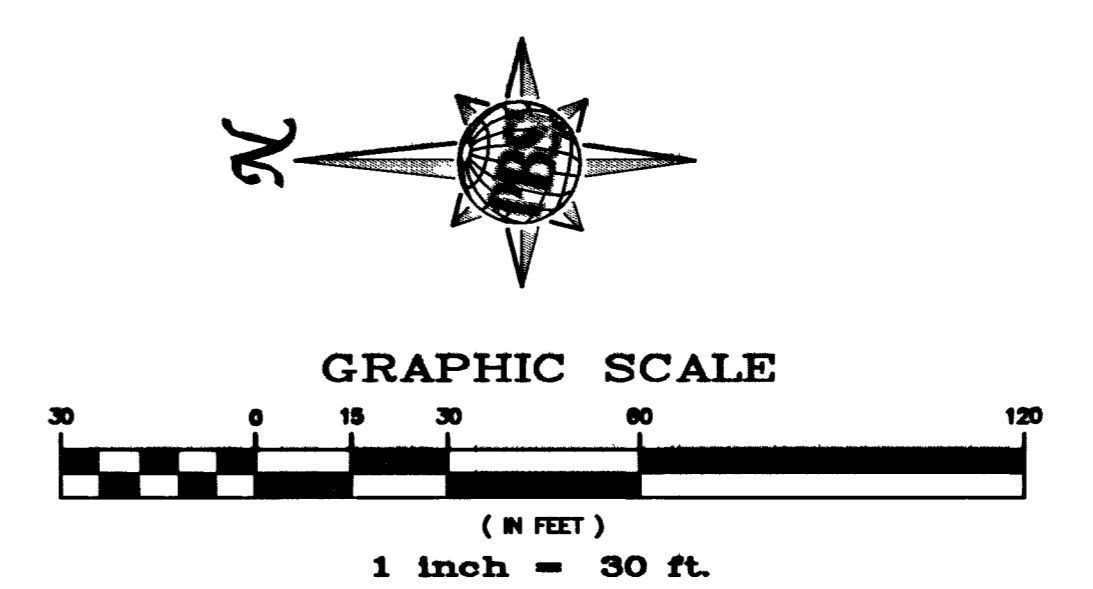


**DECATUR BLVD. (PUBLIC) - PLAN VIEW**  
HORIZONTAL SCALE: 1" = 30'



**DECATUR BOULEVARD TYPICAL 60' HALF STREET SECTION**  
NTS



**DECATUR BLVD. (PUBLIC) - PROFILE**  
HORIZONTAL SCALE: 1" = 30'  
VERTICAL SCALE: 1" = 4'

**LEGEND**

- PROPOSED OFF-SITE AC PAVEMENT
- PROPOSED RIP-RAP D<sub>50</sub>=8" MIN. 16" THICK OVER 6" TYPE II BASE W/ GEOTEXTILE FILTER FABRIC BETWEEN BASE & RIP-RAP
- FUTURE GRADE BY OTHERS
- EXISTING GRADE
- PROPOSED GRADE

**CONSTRUCTION KEY NOTES**

- 1 CONSTRUCT TYPICAL SECTION PER CCAUSD NO. 202 AND 206.1 (100' R.O.W.), ALSO REFER TO DETAIL "A" ON THIS SHEET
- 2 CONSTRUCT 5' SIDEWALK PER CCAUSD NO. 234
- 3 CONSTRUCT "L" CURB AND GUTTER PER CCAUSD NO. 216
- 4 CONSTRUCT 8" CROSS GUTTER PER CCAUSD NO. 228
- 5 CONSTRUCT 2" SIDEWALK DRAIN PER CCAUSD NO. 236
- 6 CONSTRUCT DRIVEWAY PER CCAUSD NO. 224
- 7 CONSTRUCT HALF STREET CROSS GUTTER PER CCAUSD NO. 229
- 8 CONSTRUCT SIDEWALK RAMP PER CCAUSD NO. 235 CASE I REFER TO TABLE ON THIS SHEET FOR RAMP LENGTHS
- 9 CONSTRUCT COMMERCIAL DRIVEWAY PER CCAUSD NO. 222A
- 10 CONSTRUCT PAVED ACCESS ROAD PER DETAIL "A" ON SHEET C4.13 AND CCAUSD NO. 209.
- 11 CONSTRUCT SIDEWALK RAMP PER CCAUSD NO. 235 CASE II REFER TO TABLE ON THIS SHEET FOR RAMP LENGTHS
- 12 CONSTRUCT TYPICAL BUS TURN-OUT WITH LOADING PAD PER C.C.A.U.S.D. NO 234.1 AND 234.2
- 13 CONSTRUCT PCC MEDIAN ISLAND PER CCAUSD NO. 218. REFER TO SHEETS C2.01 AND C2.02 FOR CURVE AND LINE DIMENSIONS.
- 14 CONSTRUCT TYPE "A" CURB PER CCAUSD NO. 219.
- 15 SIGHT VISIBILITY RESTRICTION ZONE, REFER TO TRAFFIC SHEETS FOR ADDITIONAL INFORMATION.

**SANITARY SEWER NOTES**

- 1 CONSTRUCT STANDARD 48" (ø) ECCENTRIC MANHOLE PER D.C.S.W.C.S. DWG. NO. SD-1.
- 2 INSTALL 6" CONCRETE COLLAR PER D.C.S.W.C.S. DWG. NO. SD-3B. RIM TO BE FLUSH WITH FG.
- 3 TRENCH SECTION AND BACKFILL PER DCSSCS SD-16 A&B.

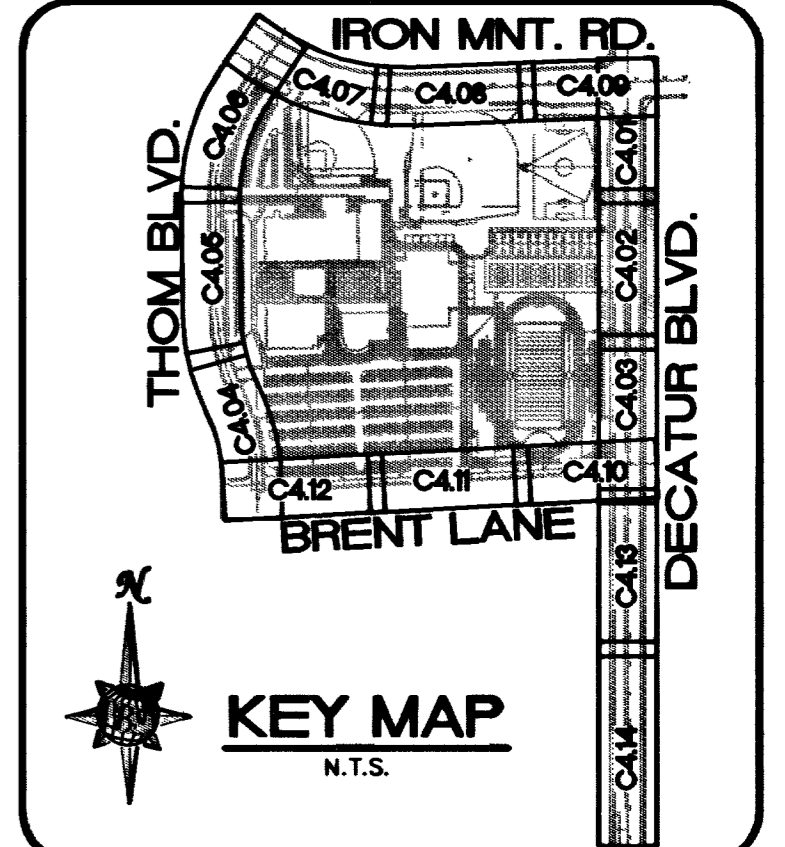
**BASIS OF BEARINGS:**

NORTH 02°20'31" WEST, BEING THE WEST LINE OF THE SOUTHWEST QUARTER (SW 1/4) OF SECTION 12, TOWNSHIP 19 SOUTH, RANGE 60 EAST, M.D.M., CLARK COUNTY, NEVADA AS SHOWN ON THE MAP IN FILE 73 OF SURVEY, PAGE 14 OFFICIAL RECORDS, CLARK COUNTY.

**BENCHMARK:**

CITY OF LAS VEGAS BENCHMARK No. 1LV90 11E4  
BLM BRASS CAP, 2" ABOVE GROUND, JONES BOULEVARD AND HORSE DRIVE. REVISION DATE: 5/7/93  
ELEV = 722.9994 m / 2372.04 FEET (NAVD88)

REVISIONS			
REV	DESCRIPTION	DATE	BY
1	SIDEWALK REVISION ADJACENT TO EXISTING NEVADA POWER VAULT	7/10/08	JKJ



**Call before you DIG**  
1-800-227-2000

**Call before you OVERHEAD**  
1-702-983-6111

**CLARK COUNTY SCHOOL DISTRICT**  
CONSTRUCTION MANAGEMENT DEPARTMENT 4828 S. PEARL STREET 798-7600 LAS VEGAS, NEVADA 89121

**DECATUR / IRON MOUNTAIN HIGH SCHOOL**  
NEVADA

**OFF-SITE, DECATUR BLVD.**

**PBSy**  
PROGRESS THROUGH KNOWLEDGE

**TATE SNYDER KIMSEY ARCHITECTS**  
700 Valley Verde Court Henderson, Nevada 89014 ph. 702.456.3000 fax 702.890.6209  
www.tatesnyderkimsey.com

**CLARK COUNTY SCHOOL DISTRICT**  
CONSTRUCTION MANAGEMENT DEPARTMENT 4828 S. PEARL STREET 798-7600 LAS VEGAS, NEVADA 89121

**DECATUR / IRON MOUNTAIN HIGH SCHOOL**  
CITY OF LAS VEGAS

**OFF-SITE, DECATUR BLVD.**

SHEET NO. **C4.02**  
715-144  
SHEET 16 OF 45

1251-072.dwg RIB 06/26/02 17:08:47

44238  
56119  
Paul Monte