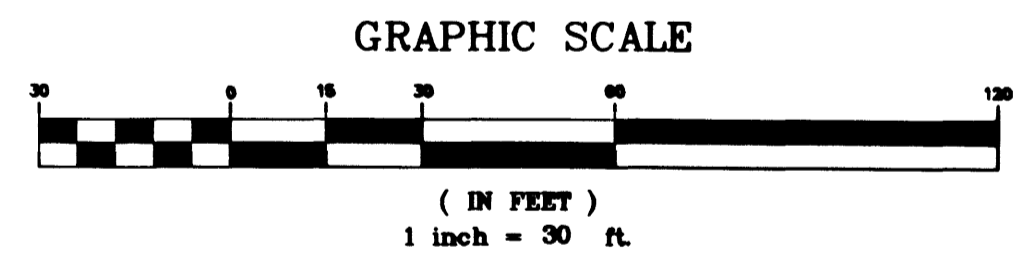
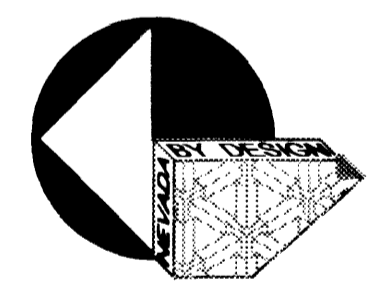
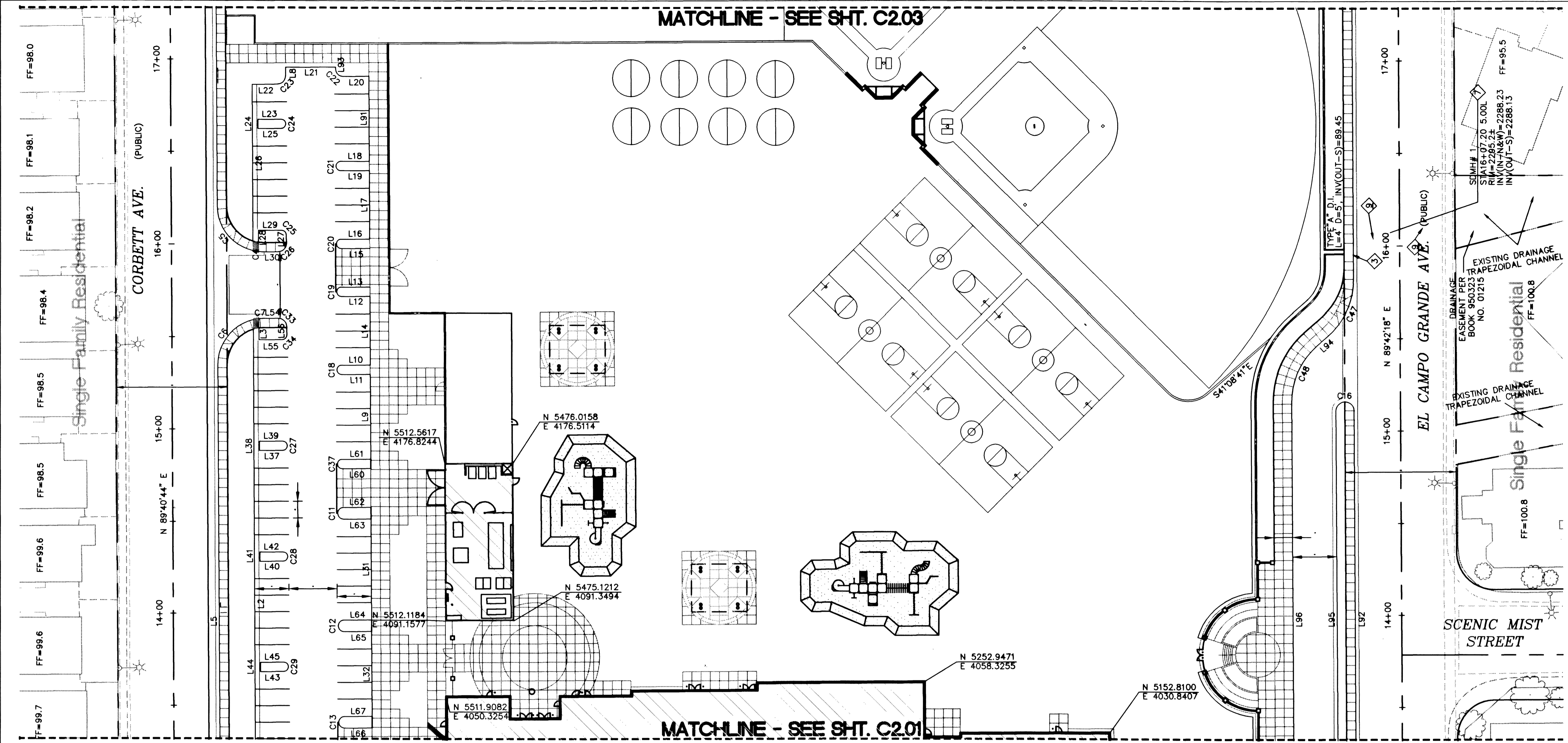


MATCHLINE - SEE SHT. C2.03

MATCHLINE - SEE SHT. C2.01



BASIS OF BEARING

NORTH 00°00'59" EAST BEING THE EAST LINE OF THE NORTHEAST QUARTER (NE 1/4), OF THE SOUTHWEST QUARTER (SW 1/4) OF SECTION 25, TOWNSHIP 19 SOUTH, RANGE 60 EAST, M.D.M. AS SHOWN ON PARCEL MAP, FILE 66, PAGE 7, OFFICIAL RECORDS, CLARK COUNTY, NEVADA.

BENCHMARK

CITY OF LAS VEGAS BENCHMARK #1LV90-36N4
 ELEVATION = 696.2262 METERS 2284.20 FEET (NAVD 88).
 RIVET AND PLATE IN SOUTH TOP OF CURB, ANN ROAD AT CURB ANGLE POINT, 1530.00 FEET EAST OF CALVERTS STREET AT BRADLEY ROAD.

NOTES:

1. ALL DIMENSIONS ARE TO BACK OF CURB
2. REFER TO ARCHITECTURAL PLANS FOR MORE DETAILED INFORMATION ON BUILDINGS AND PLANTERS
3. CONTRACTOR RESPONSIBLE TO PROVIDE SURVEY MONUMENTATION AS SHOWN AND TO REPLACE ALL SURVEY MONUMENTATION DAMAGED, DISTURBED, DESTROYED OR OBSCURED DURING CONSTRUCTION
4. OWNER'S GENERAL CONTRACTOR TO PROVIDE SURVEY MONUMENTATION IN HIS/HER BID.
5. MONUMENTATION TO BE INSTALLED BY A SURVEYOR LICENSED IN THE STATE OF NEVADA.

LINE	LENGTH	BEARING
L1	20.17	S20°00'40"E
L2	297.75	S89°42'18"W
L3	6.41	S89°42'18"W
L4	624.30	N89°40'44"E
L5	278.59	N89°40'44"E
L6	62.61	N89°40'44"E
L7	49.99	N89°40'44"E
L8	4.64	N89°42'18"E
L9	46.00	S89°42'18"W
L10	15.50	N00°17'42"W
L11	15.50	N00°17'42"W
L12	15.50	N00°17'42"W
L13	15.50	N00°17'42"W
L14	37.00	S89°42'18"W
L15	15.50	N00°17'42"W
L16	15.50	N00°17'42"W
L17	37.00	S89°42'18"W
L18	15.50	N00°17'42"W
L19	15.50	N00°17'42"W
L20	14.00	N00°17'42"W
L21	27.00	N00°17'42"W
L22	13.50	N00°17'42"W
L23	12.50	N00°17'42"W
L24	5.00	S89°42'18"W
L25	12.50	N00°17'42"W
L26	84.76	S89°42'18"W
L27	4.60	N89°42'18"E
L28	6.41	S89°42'18"W
L29	12.50	N00°17'42"W

LINE	LENGTH	BEARING
L30	7.78	S00°17'42"E
L31	55.00	S89°42'18"W
L32	46.00	S89°42'18"W
L33	57.00	S89°42'18"W
L34	73.00	S89°42'19"W
L35	55.00	S89°42'19"W
L36	46.00	S89°42'05"W
L37	12.50	N00°17'42"W
L38	5.00	S89°42'18"W
L39	12.50	N00°17'42"W
L40	12.50	N00°17'42"W
L41	5.00	S89°42'18"W
L42	12.50	N00°17'42"W
L43	12.50	N00°17'42"W
L44	5.00	S89°42'18"W
L45	12.50	N00°17'42"W
L46	12.50	N00°17'42"W
L47	5.00	S89°42'18"W
L48	12.50	N00°17'42"W
L49	14.11	N00°17'42"W
L50	27.61	N00°17'42"W
L51	13.50	N00°17'42"W
L52	12.00	S89°42'18"W
L53	55.00	S89°42'18"W
L54	7.74	N00°17'42"W
L55	12.50	N00°17'42"W
L56	4.60	N89°42'18"E
L57	4.60	S89°42'18"W
L58	7.58	N00°17'42"W

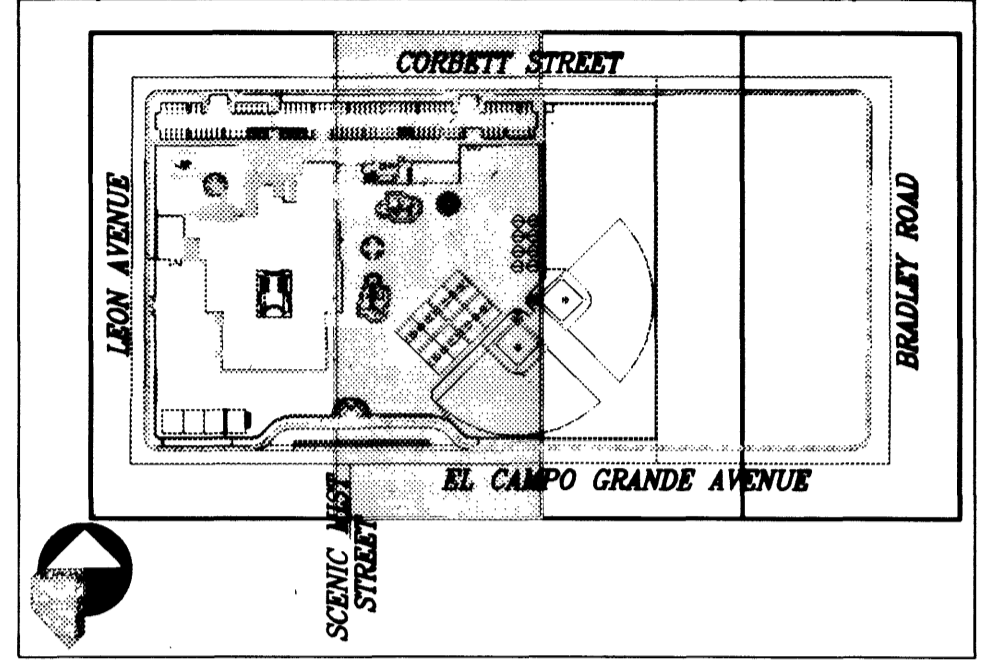
LINE	LENGTH	BEARING
L59	15.50	N00°17'42"W
L60	15.50	N00°17'42"W
L61	15.50	N00°17'42"W
L62	14.84	N00°17'42"W
L63	14.83	N00°17'42"W
L64	14.83	N00°17'42"W
L65	14.84	N00°17'42"W
L66	14.88	N00°17'42"W
L67	14.88	N00°17'42"W
L68	15.50	N00°17'42"W
L69	13.50	N00°17'42"W
L70	4.18	S89°42'18"W
L71	15.50	N00°17'46"W
L72	15.50	N00°17'46"W
L73	15.50	N00°17'38"W
L74	15.49	N00°17'38"W
L75	16.00	S89°42'18"W
L76	15.50	N00°17'42"W
L77	14.88	N00°17'42"W
L78	14.88	N00°17'42"W
L79	27.00	N00°17'42"W
L80	13.00	S00°17'42"E
L81	4.68	S89°42'18"W
L82	45.00	S89°42'18"W
L83	15.50	S00°17'42"E
L84	15.50	N00°17'42"W
L85	19.00	S89°42'18"W
L86	15.00	S00°17'42"E
L87	3.50	S89°42'18"W

LINE	LENGTH	BEARING
L88	599.92	N00°01'37"E
L89	563.87	N00°01'37"E
L90	168.87	S89°42'18"W
L91	45.98	S89°42'18"W
L92	226.38	S89°42'18"W
L93	1.00	S89°42'18"W
L94	8.07	S41°08'41"E
L95	226.38	N89°42'18"E
L96	236.16	N89°42'18"E
L97	7.05	S00°17'42"E
L98	8.07	S40°33'17"W
L99	663.80	S89°42'18"W
L100	564.35	S00°00'59"W
L101	40.78	S89°33'25"W

CURVE	LENGTH	RADIUS	DELTA	TANGENT
C1	4.74	3.00	90°31'58"	3.03
C2	70.32	45.00	89°31'48"	44.63
C3	39.42	25.00	90°20'15"	25.15
C4	2.73	25.00	61°4'57"	1.36
C5	33.49	25.00	76°44'41"	19.80
C6	33.47	25.00	76°42'18"	19.78
C7	2.77	25.00	6°20'20"	1.38
C8	39.26	25.00	89°58'26"	24.99
C9	39.28	25.00	90°01'34"	25.01
C10	46.94	30.00	89°39'07"	29.82
C11	9.95	3.17	180°00'00"	
C12	9.95	3.17	180°00'00"	
C13	9.82	3.13	180°00'00"	
C14	9.82	3.13	180°00'00"	
C15	7.07	4.50	90°00'00"	4.50
C16	15.37	4.89	180°00'00"	
C17	15.37	4.89	180°00'00"	
C18	7.85	2.50	180°00'00"	
C19	7.85	2.50	180°00'00"	
C20	7.85	2.50	180°00'00"	
C21	7.85	2.50	180°00'00"	
C22	6.28	4.00	90°00'00"	4.00
C23	7.07	4.50	90°00'00"	4.50
C24	7.85	2.50	180°00'00"	
C25	3.93	2.50	90°00'00"	2.50
C26	7.07	4.50	90°00'00"	4.50
C27	7.85	2.50	180°00'00"	
C28	7.85	2.50	180°00'00"	
C29	7.85	2.50	180°00'00"	

CURVE	LENGTH	RADIUS	DELTA	TANGENT
C30	7.85	2.50	180°00'00"	
C31	7.07	4.50	90°00'00"	4.50
C32	7.07	4.50	90°00'00"	4.50
C33	7.07	4.50	90°00'00"	4.50
C34	3.93	2.50	90°00'00"	2.50
C35	7.07	4.50	90°00'00"	4.50
C36	3.93	2.50	90°00'00"	2.50
C37	7.85	2.50	180°00'00"	
C38	3.93	2.50	90°00'00"	2.50
C39	7.85	2.50	180°00'00"	
C40	7.85	2.50	180°00'00"	
C41	3.93	2.50	90°00'00"	2.50
C42	7.85	5.00	90°00'00"	5.00
C43	7.85	2.50	180°00'00"	
C44	4.71	3.00	90°00'00"	3.00
C45	7.85	5.00	90°00'00"	5.00
C46	31.53	20.00	90°19'19"	20.11
C47	34.31	40.00	49°09'01"	18.29
C48	34.31	40.00	49°09'01"	18.29
C49	34.29	40.00	49°06'48"	18.28
C50	34.31	40.00	49°09'01"	18.29
C51	39.13	25.00	89°41'19"	24.86

REV	DESCRIPTION	DATE	BY



DO NOT SCALE DRAWINGS

STATE OF NEVADA
 KENT B. ANDERSON
 CIVIL ENGINEER
 No. 6991
 2/17/2000

NEVADA BY DESIGN
 4292 S. Maryland Parkway
 Las Vegas, Nevada 89119
 702/731-2114 - fax
 702/731-2888 - cell

JMA ARCHITECTURE STUDIOS
 10110 CENTINELA CROSS DRIVE LAS VEGAS, NEVADA 89138 (702) 731-2888

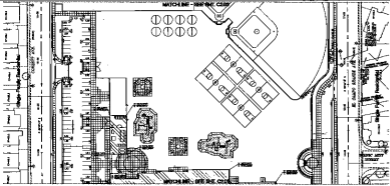
CLARK COUNTY SCHOOL DISTRICT
 CONSTRUCTION MANAGEMENT
 4828 PEARL ST.
 LAS VEGAS, NEVADA 89121

EL CAMPO GRANDE / BRADLEY ELEMENTARY SCHOOL
 SITE DIMENSION PLAN

SHEET NO.
C2.02
 SHEET 6 of 34
 DRAWING NUMBER
 715-132

Call before you Dig
 1-800-227-2600
 UNDERGROUND SERVICE ALERT (USA)

Call before you OVERHEAD
 1-702-593-6111
 NEVADA POWER EMPLOYMENT & SAFETY SERVICE (NEPSS)



<p>1. 1/4" = 1'-0" (VERTICAL SCALE)</p> <p>2. 1/4" = 100'-0" (HORIZONTAL SCALE)</p>	<p>3. 1/4" = 1'-0" (VERTICAL SCALE)</p> <p>4. 1/4" = 100'-0" (HORIZONTAL SCALE)</p>	<p>5. 1/4" = 1'-0" (VERTICAL SCALE)</p> <p>6. 1/4" = 100'-0" (HORIZONTAL SCALE)</p>	<p>7. 1/4" = 1'-0" (VERTICAL SCALE)</p> <p>8. 1/4" = 100'-0" (HORIZONTAL SCALE)</p>	<p>9. 1/4" = 1'-0" (VERTICAL SCALE)</p> <p>10. 1/4" = 100'-0" (HORIZONTAL SCALE)</p>	<p>11. 1/4" = 1'-0" (VERTICAL SCALE)</p> <p>12. 1/4" = 100'-0" (HORIZONTAL SCALE)</p>	<p>13. 1/4" = 1'-0" (VERTICAL SCALE)</p> <p>14. 1/4" = 100'-0" (HORIZONTAL SCALE)</p>
---	---	---	---	--	---	---



NOTES:

1. ALL DIMENSIONS ARE TO FACE UNLESS NOTED OTHERWISE.
2. ALL DIMENSIONS ARE TO FACE UNLESS NOTED OTHERWISE.
3. ALL DIMENSIONS ARE TO FACE UNLESS NOTED OTHERWISE.
4. ALL DIMENSIONS ARE TO FACE UNLESS NOTED OTHERWISE.
5. ALL DIMENSIONS ARE TO FACE UNLESS NOTED OTHERWISE.

LEGEND:

- 1. 1/4" = 1'-0" (VERTICAL SCALE)
- 2. 1/4" = 100'-0" (HORIZONTAL SCALE)
- 3. 1/4" = 1'-0" (VERTICAL SCALE)
- 4. 1/4" = 100'-0" (HORIZONTAL SCALE)
- 5. 1/4" = 1'-0" (VERTICAL SCALE)
- 6. 1/4" = 100'-0" (HORIZONTAL SCALE)
- 7. 1/4" = 1'-0" (VERTICAL SCALE)
- 8. 1/4" = 100'-0" (HORIZONTAL SCALE)
- 9. 1/4" = 1'-0" (VERTICAL SCALE)
- 10. 1/4" = 100'-0" (HORIZONTAL SCALE)
- 11. 1/4" = 1'-0" (VERTICAL SCALE)
- 12. 1/4" = 100'-0" (HORIZONTAL SCALE)
- 13. 1/4" = 1'-0" (VERTICAL SCALE)
- 14. 1/4" = 100'-0" (HORIZONTAL SCALE)



	<p>CLARK COUNTY SCHOOL DISTRICT</p> <p>LA. STATE OFFICE</p>
	<p>E. CAMP ORANGE / BRADLEY ELEMENTARY SCHOOL</p> <p>SITE DEMONSTRATION PLAN</p>
<p>SCALE: 1/4" = 1'-0" (VERTICAL)</p> <p>SCALE: 1/4" = 100'-0" (HORIZONTAL)</p>	<p>C202</p>