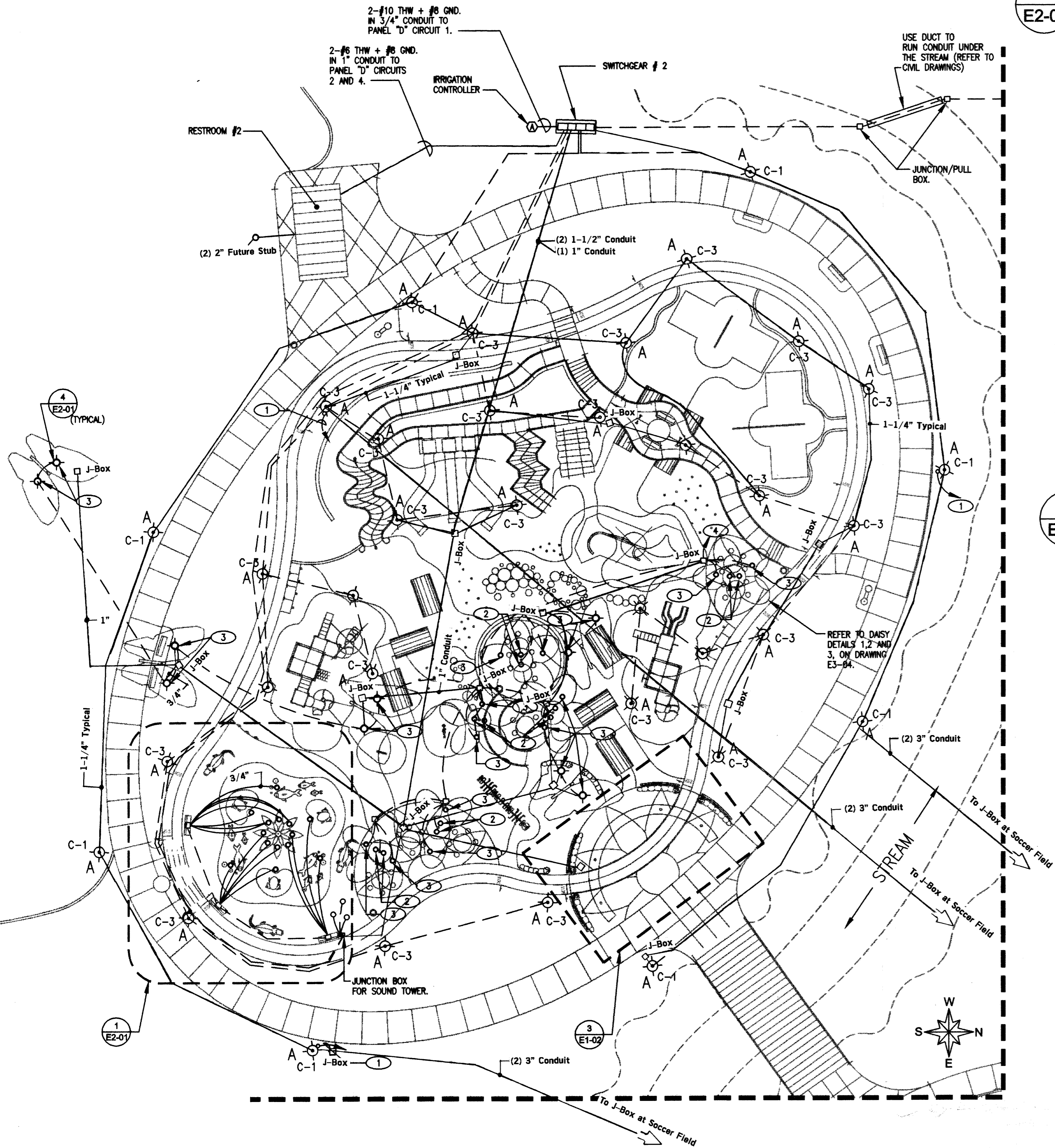
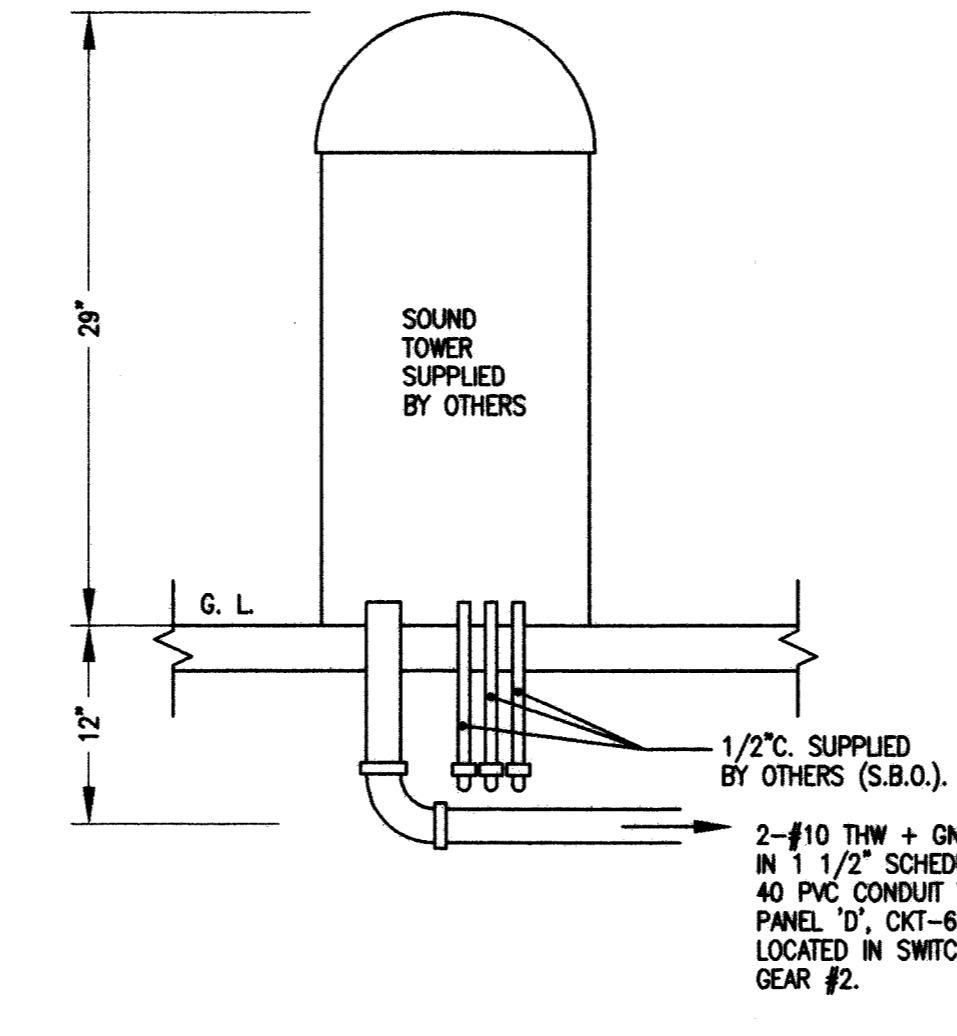
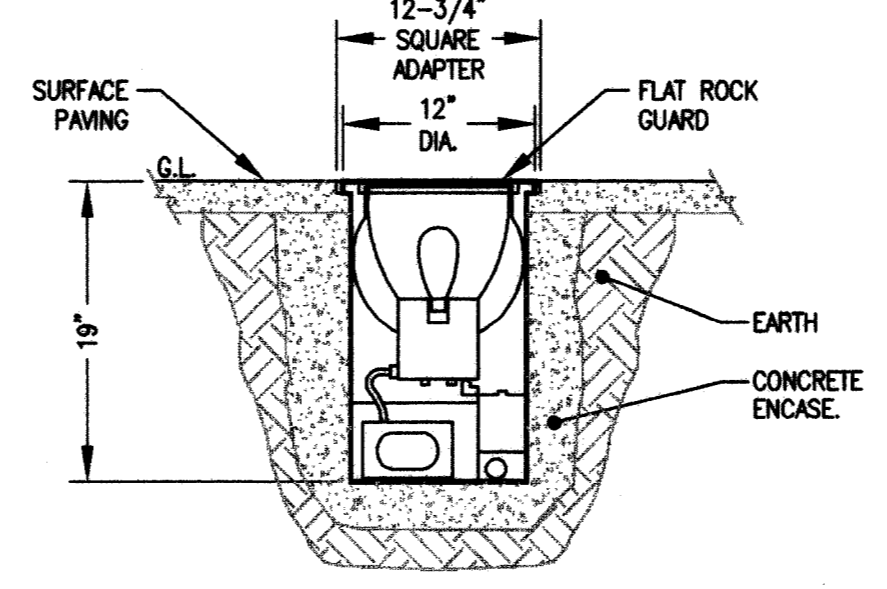


- KEYNOTES:**
- 1 PROVIDE AND INSTALL 2-3" CONDUITS FROM THE ELECTRICAL ROOM IN THE CONCESSION STAND TO THIS LIGHTING POLE FOR FUTURE SECURITY CAMERA STUB AND CAP AT POLE.
 - 2 FIXTURE TYPE "F" REFER TO DETAIL 4 ON DRAWING E3-04.
 - 3 FIXTURE TYPE "E"
 - 4 2-#8 THW + #10 GND. IN 1" CONDUIT TO PANEL "C", CIRCUIT 5.

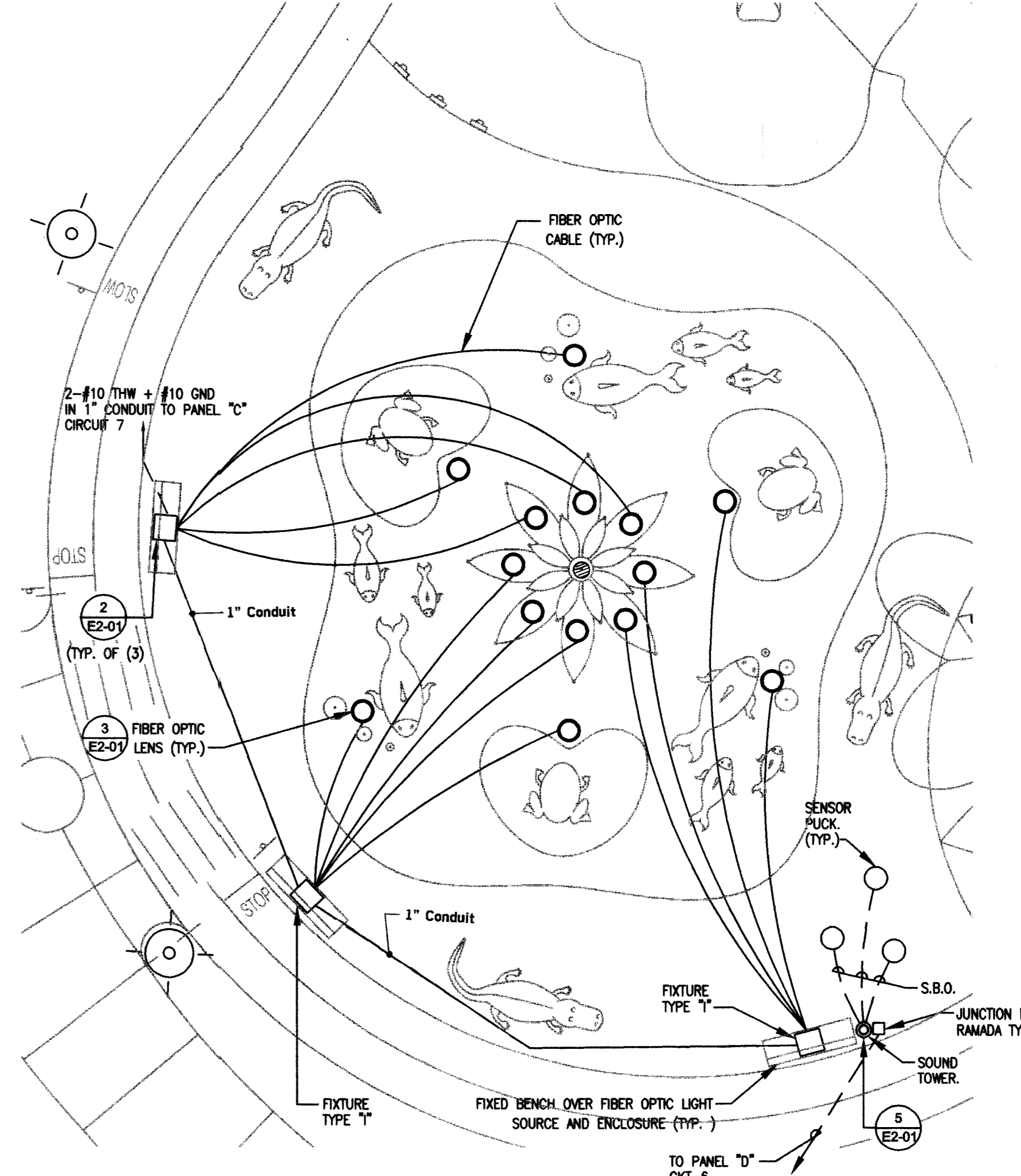


PLAYGROUND - LIGHTING LAYOUT
SCALE: 1" = 20'-0"

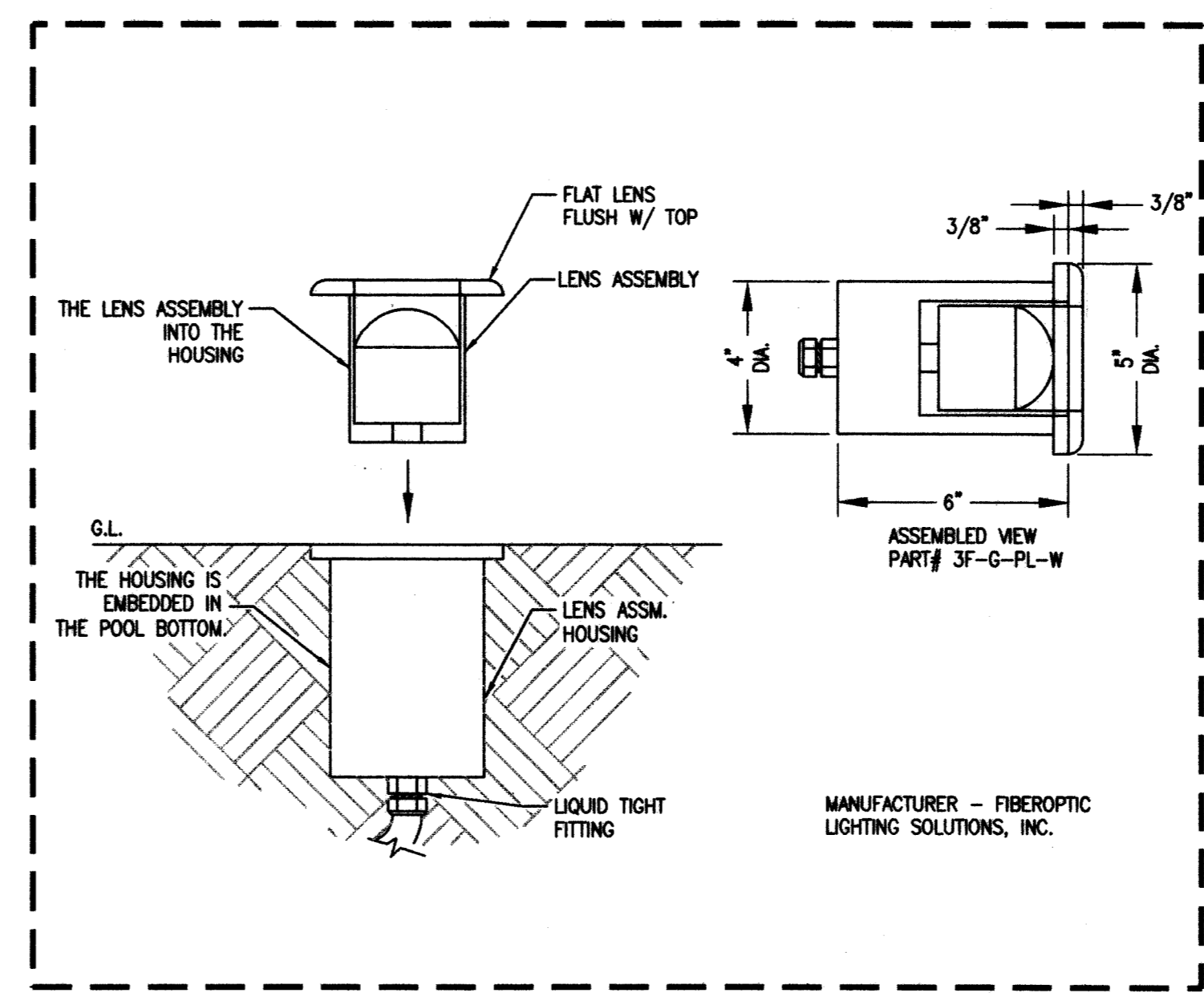
4 FIXTURE "E"- UPLIGHT MOUNTING DETAIL
E2-01 SCALE: NTS



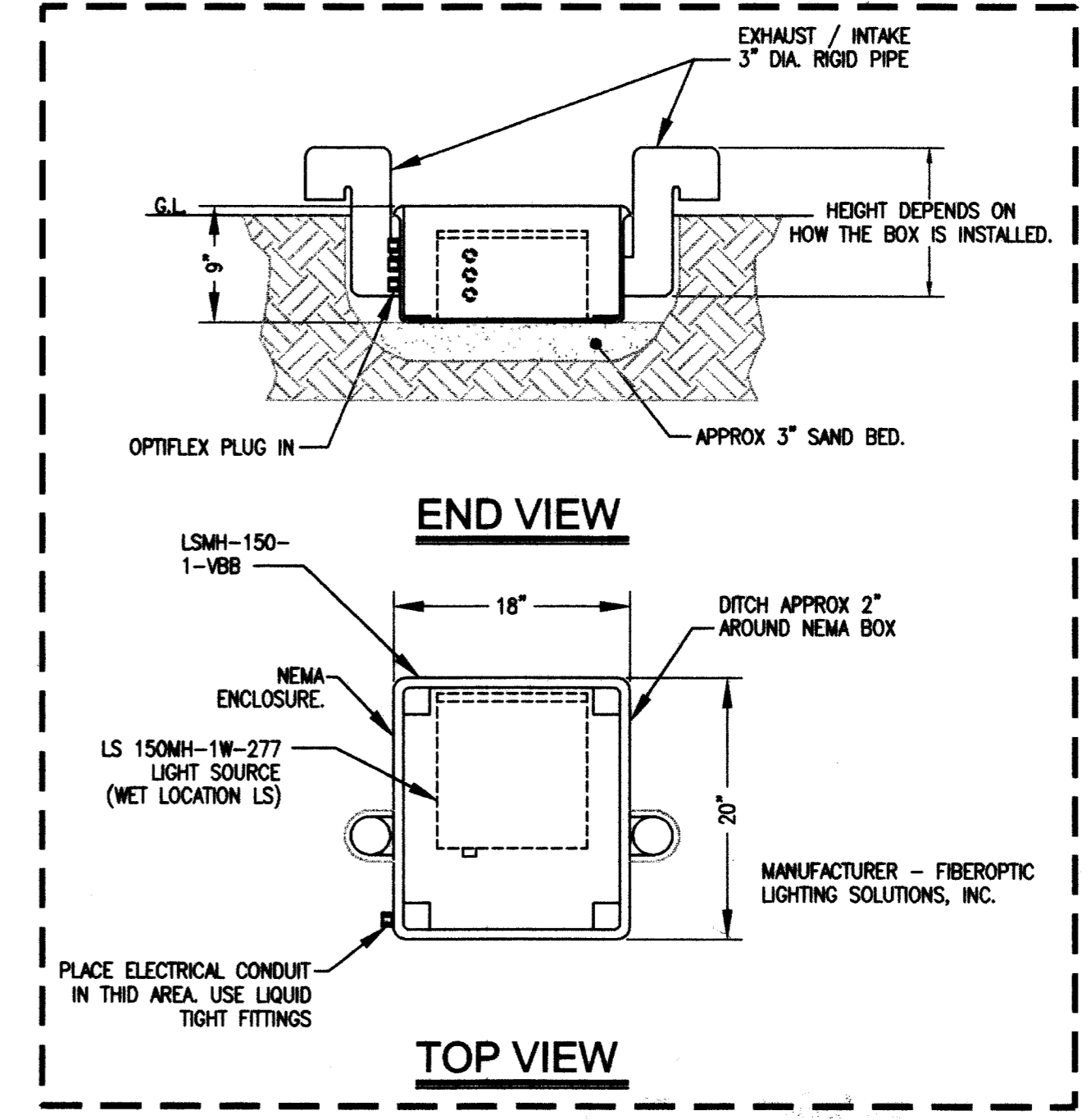
5 SOUND TOWER ELEVATION
E2-01 SCALE: NTS



1 WATER PLAY ADVENTURE AREA - LIGHTING PLAN
E2-01 SCALE: N.T.S.



3 FIBER OPTIC LENS DETAIL
E2-01 SCALE: 3\"/>

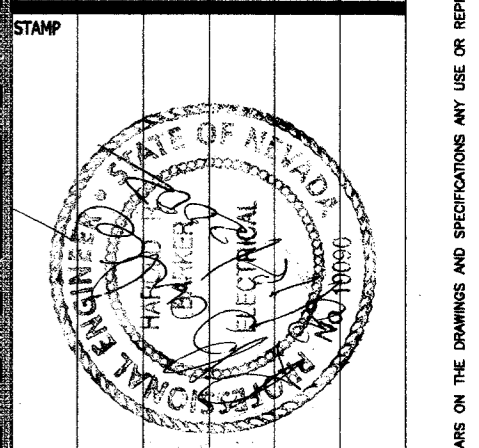


2 FIBER OPTIC LIGHT SOURCE & ENCLOSURE
E2-01 SCALE: 1" = 1'-0"



ALLEGRO CONSULTANTS INC.
3430 E. Flamingo Rd.
Las Vegas, Nevada 89121
Phone: (702) 458-2388
Fax: (702) 458-4430

DEER SPRINGS PARK PHASE I
ELKHORN & BUFFALO, LAS VEGAS, NV
PLAYGROUND - LIGHTING LAYOUT AND DETAILS



OWNER: CITY OF LAS VEGAS
DEPARTMENT OF PUBLIC WORKS
ARCHITECTURAL SERVICES

400 EAST STEWART AVENUE
LAS VEGAS, NEVADA 89101
PHONE: (702) 229-5535
FAX: (702) 382-5232
TDD: (702) 386-9108

DRAWN: 06
FILE: 02040-1
DATE: MARCH 8, 2002
SCALE: AS SHOWN
REV NO: 02/03/01/05
CLDWG NO: 06020-1
REV SET ISSUED: 5/8/02

E2-01

75694

RECORD AS-BUILTS

DRAWINGS ARE INSTANTANEOUS OF SPACE ARE THE PROPERTY OF THE DESIGN PROFESSIONAL. THESE DRAWINGS ARE STRICTLY FOR THE PROJECT FOR WHICH THEY WERE PREPARED AND NOT FOR THE CONSTRUCTION OF ANY OTHER PROJECT. A.C. 02/17/02