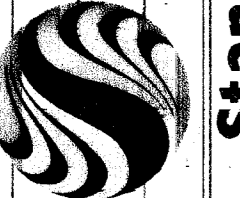




PROFESSOR
ALL RECORD DRAWINGS

CONSULTANT

6757 W CHARLESTON BLVD
LAS VEGAS, NEVADA 89146
PHONE (702) 258-0115
FAX (702) 869-8547



Stantec

DEER SPRINGS PARK - PHASE I
ELKHORN & BUFFALO, LAS VEGAS, NV

PHASE ONE
GRADING PLAN

STAMP

OWNER: CITY OF LAS VEGAS
DEPARTMENT OF PUBLIC WORKS
ARCHITECTURAL SERVICES

400 EAST STEWART AVENUE
LAS VEGAS, NEVADA 89101
PHONE: (702) 229-8535
FAX: (702) 382-8332
TDD: (702) 386-9108

DATE: 07-05-03

SCALE: 1" = 30'

REV NO: 02-15-03

CLV DWG NO: 65065-1

SHEET NO: C-5

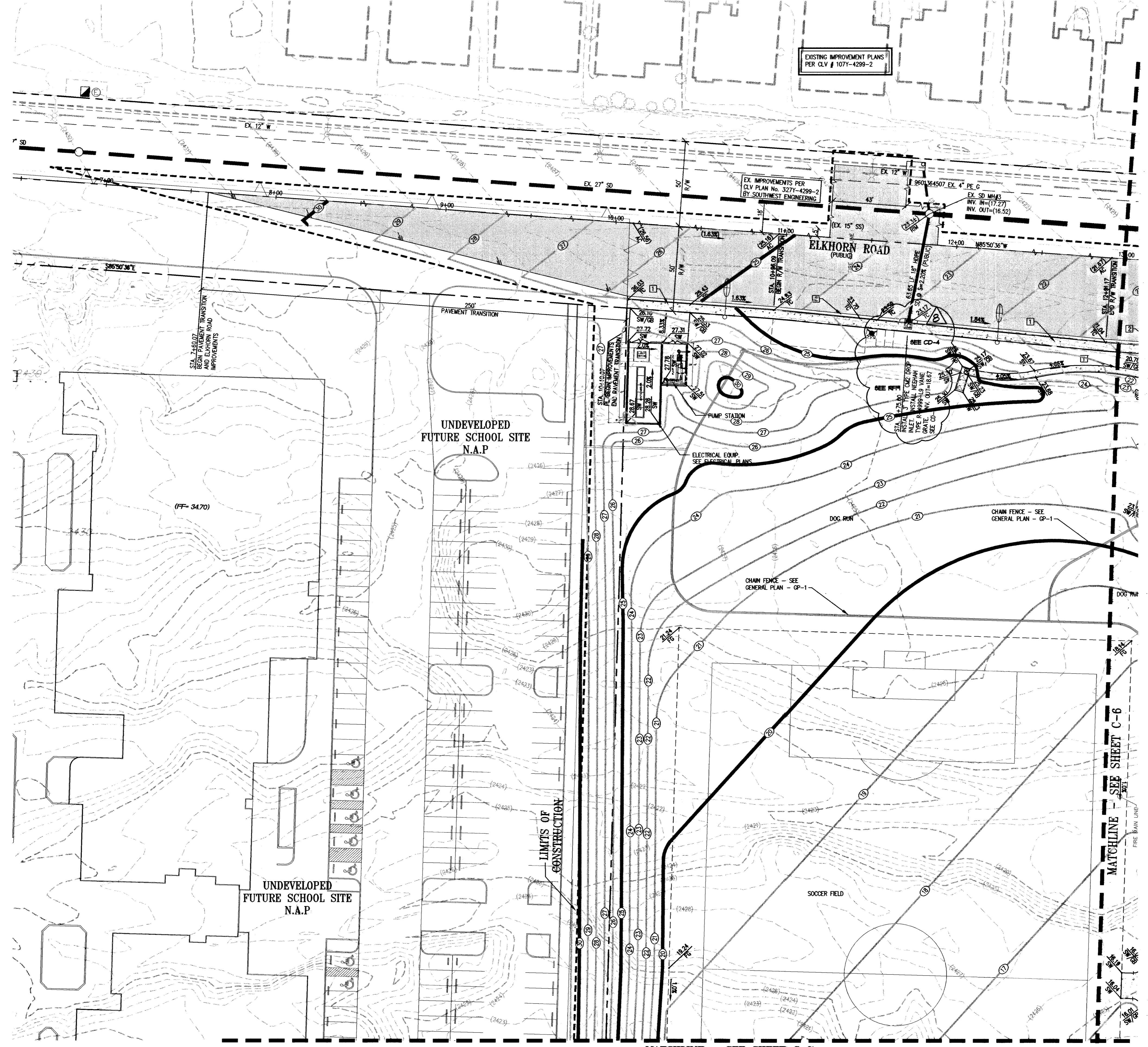
DATE: 07-05-03

SCALE: 1" = 30'

REV NO: 02-15-03

CLV DWG NO: 65065-1

SHEET NO: C-5

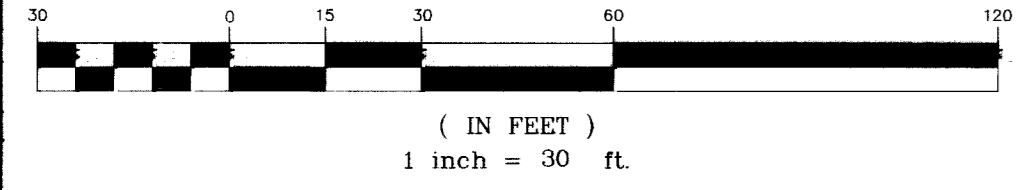


Key Plan

RECORD DOCUMENTS ARE PREPARED FROM DATA AND INFORMATION SUPPLIED BY OTHERS. STANTEC CONSULTING, INC. DOES NOT CERTIFY, NOR WARRANT IN ANY MANNER, THE ACCURACY OR COMPLETENESS OF RECORD DOCUMENTS. STANTEC CONSULTING, INC. ADVISES ANYONE USING RECORD DOCUMENTS, FOR ANY PURPOSE, TO INDEPENDENTLY VERIFY THE ACCURACY OR COMPLETENESS OF THE INFORMATION PRESENTED; AND TO VERIFY THE SUITABILITY OF THE INFORMATION FOR THE PURPOSE FOR WHICH THEY INTEND TO USE THE INFORMATION. STANTEC CONSULTING, INC. SHALL NOT BE RESPONSIBLE FOR ANY PROBLEMS, DISCREPANCIES OR RELATED COSTS THAT MAY ARISE OUT OF THE USE OF RECORD DOCUMENTS.



GRAPHIC SCALE



ABBREVIATIONS	
AC	ASPHALTIC CONCRETE
BCR	BEGIN CURB RETURN
EX	EXISTING
FF	FINISH FLOOR
FG	FINISH GRADE
FL	FLOW LINE
FP	FINISH PAD
GB	GRADE BREAK
HP	HIGH POINT
SS	SANITARY SEWER
TC	TOP OF CURB
TMW	TOP OF MODULAR WALL
SW	SIDE WALK FINISH GRADE
LP	LOW POINT
TOP	TOP OF STEP
INV.	BOTTOM OF STEP
	INVERT

LEGEND	
	RIGHT-OF-WAY/PROPERTY
	EXISTING CURB/GUTTER WHERE SHOWN
	PROPOSED CURB/GUTTER WHERE SHOWN
	FLOW LINE WHERE SHOWN
	PROPOSED GRADE
	EXISTING GRADE
	NEW 4" CONCRETE
	NEW ASPHALTIC CONCRETE (AC)
	200 W HPS STREET LIGHT
	400 W HPS STREET LIGHT

HDPE NOTE
CONTRACTOR SHALL PROVIDE 30" MINIMUM COVER OVER PIPE PRIOR TO VEHICLE LOADING DURING CONSTRUCTION. TRENCH WIDTH MUST BE WIDE ENOUGH TO ACCOMMODATE COMPACTION EQUIPMENT. (SEE MANUFACTURER'S GUIDELINES. (PRODUCT NOTE 3.115) AND ASTM D2321. CONTRACTOR SHALL NOT USE HYDRO-HAMMER TYPE COMPACTORS OVER PIPE TRENCH AREA.

I CERTIFY THAT THE GRADING PLAN IS IN CONFORMANCE WITH THE APPROVED DRAINAGE STUDY ON FILE WITH THE CITY OF LAS VEGAS FOR THIS PROJECT.
GUY RUDDY, PE 12848 DATE

- CONSTRUCTION KEYNOTES:**
- CONSTRUCT 4" THICK CONCRETE SIDEWALK PER C.C. AREA STD. DWG. NO. 234.
 - CONSTRUCT 24" L-TYPE CURB AND GUTTER PER C.C. AREA STD. DWG. NO. 216.

BENCHMARK
BMJ 03028NE6, RIVET AND PLATE IN THE TOP OF HEADWALL, EAST SIDE OF U.S. HWY. 95, NEAR MILE MARKER 87.70, ELEVATION 2398.06 (NAVD88).

BASIS OF BEARING
THE NORTH LINE OF THE NE 1/4 OF THE NE 1/4 OF SECTION 21, TOWNSHIP 19 SOUTH, RANGE 60 EAST, M.D.M., BEARS S 86°42'12" E PER RECORD OF SURVEY, FILE 74, PAGE 30 OF SURVEYS, OFFICIAL RECORDS OF CLARK COUNTY, NEVADA.

Call before you Dig
1-800-227-2600
NEVADA STATE AGENCY

Call before you OVERHEAD
1-702-593-6111
NEVADA STATE AGENCY