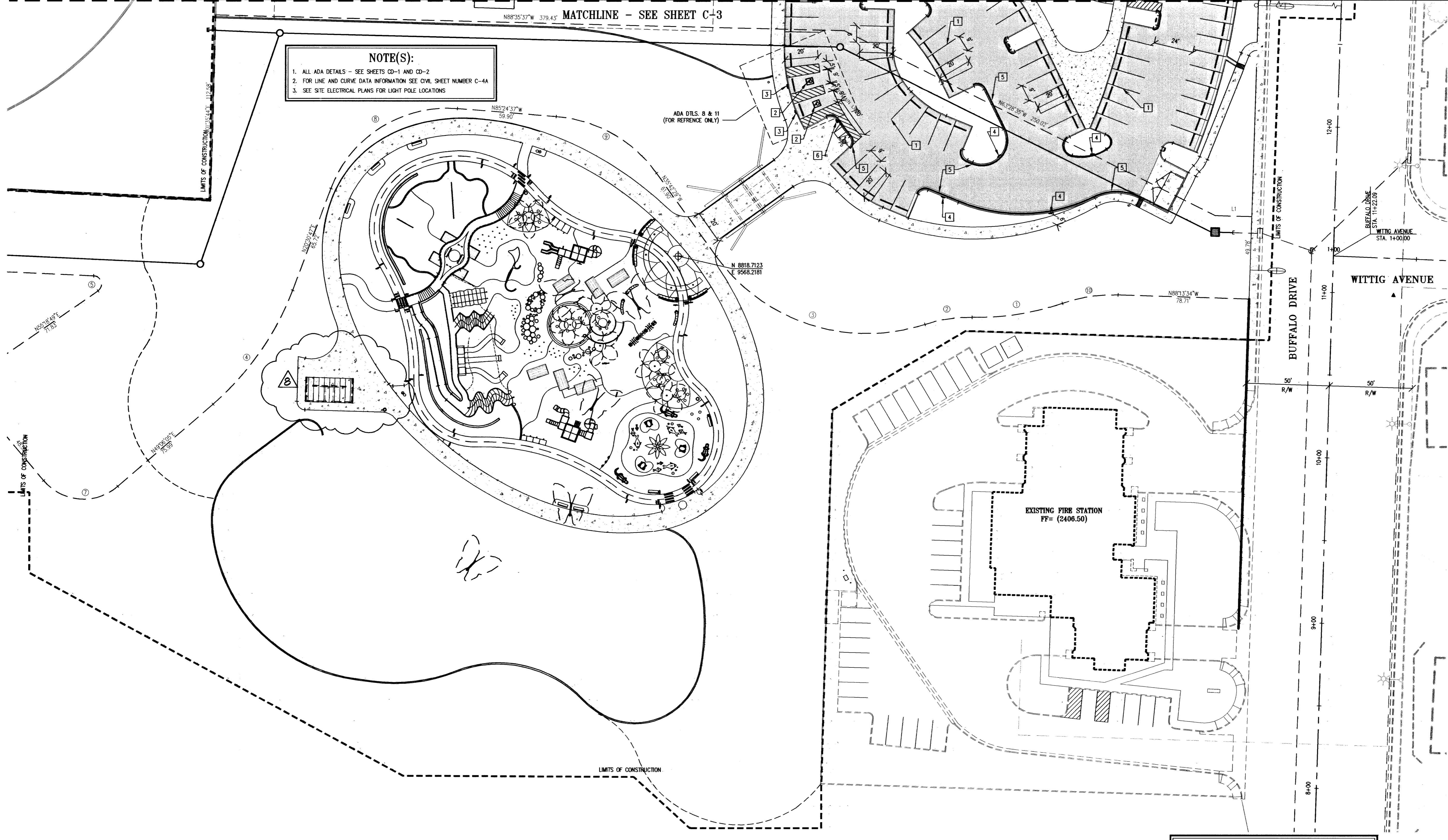




**NOTE(S):**  
 1. ALL ADA DETAILS - SEE SHEETS CD-1 AND CD-2  
 2. FOR LINE AND CURVE DATA INFORMATION SEE CIVIL SHEET NUMBER C-4A  
 3. SEE SITE ELECTRICAL PLANS FOR LIGHT POLE LOCATIONS



RECORD DOCUMENTS ARE PREPARED FROM DATA AND INFORMATION SUPPLIED BY OTHERS. STANTEC CONSULTING, INC. DOES NOT CERTIFY, NOR WARRANT IN ANY MANNER, THE ACCURACY OR COMPLETENESS OF RECORD DOCUMENTS. STANTEC CONSULTING, INC. ADVISES ANYONE USING RECORD DOCUMENTS, FOR ANY PURPOSE, TO INDEPENDENTLY VERIFY THE ACCURACY OR COMPLETENESS OF THE INFORMATION PRESENTED; AND TO INTEND TO USE THE INFORMATION. STANTEC CONSULTING, INC. SHALL NOT BE RESPONSIBLE FOR ANY PROBLEMS, DISCREPANCIES OR RELATED COSTS THAT MAY ARISE OUT OF THE USE OF RECORD DOCUMENTS.

**BENCHMARK**  
 BM# 00302826, RIVET AND PLATE IN THE TOP OF HEADWALL, EAST SIDE OF U.S. HWY. 95, NEAR MILE MARKER 87.70, ELEVATION 2398.06 (NAVD88)

**BASIS OF BEARING**  
 THE NORTH LINE OF THE NE 1/4 OF THE NE 1/4 OF SECTION 21, TOWNSHIP 19 SOUTH, RANGE 60 EAST, M.D.M., BEARS S 80°49'12" E PER RECORD OF SURVEY, FILE 74, PAGE 30 OF SURVEYS, OFFICIAL RECORDS OF CLARK COUNTY, NEVADA.

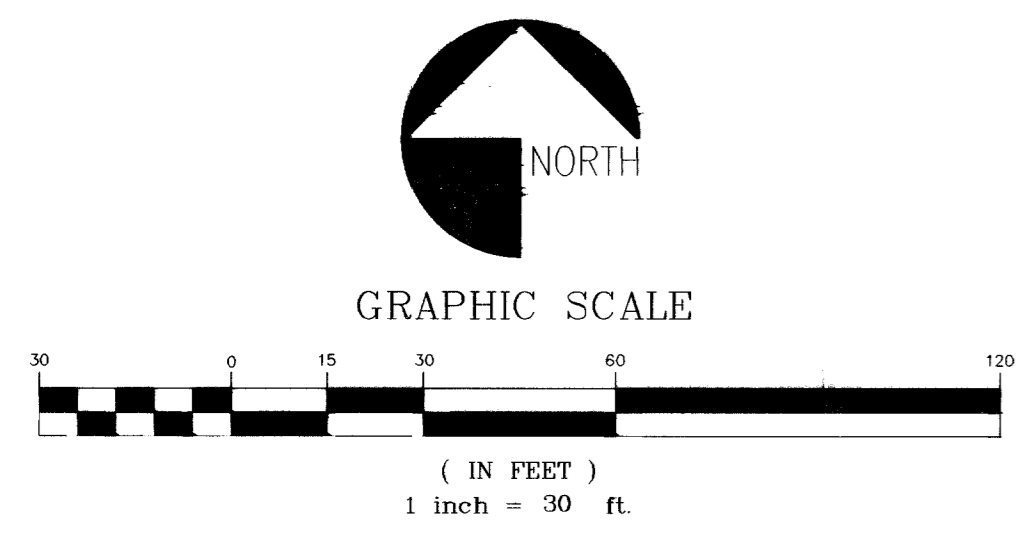
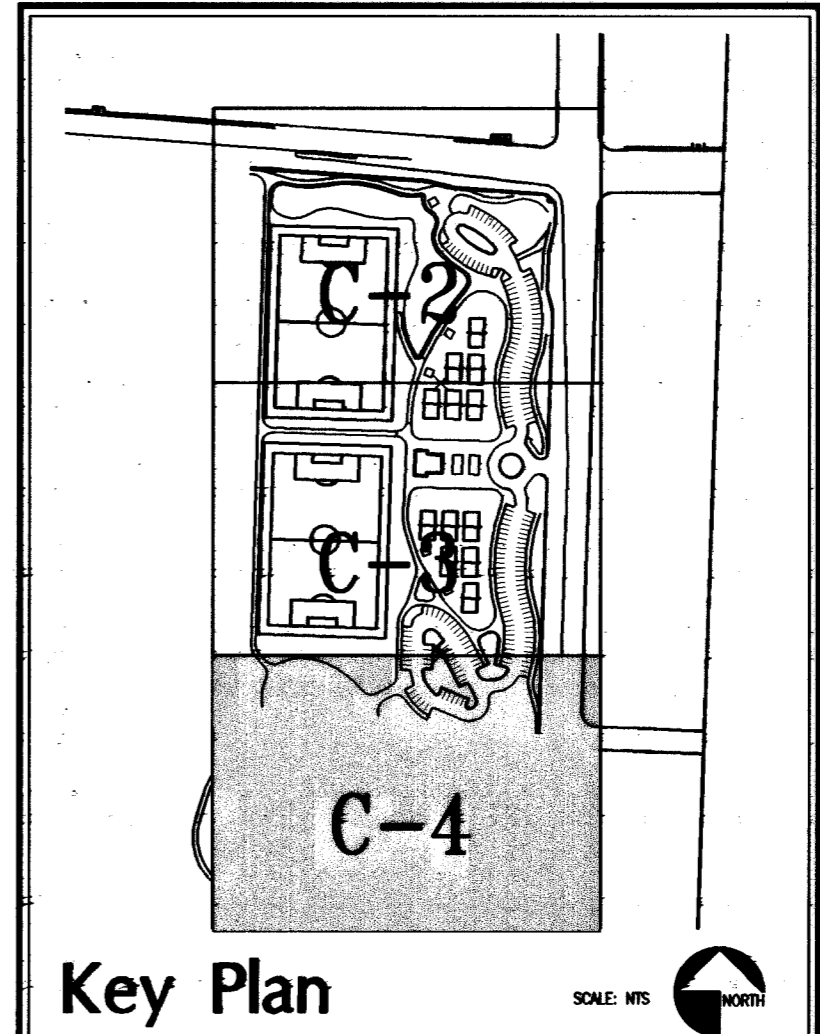
- CONSTRUCTION KEYNOTES:**
1. PAINT 4" WHITE PARKING STRIPE
  2. PAINT HANDICAP STALLS PER DETAIL 1 AND 2 ON SHEET SD-01
  3. INSTALL HANDICAP PARKING SIGNAGE PER DETAILS 3, 4, AND 5 ON SHEET SD-01
  4. INSTALL "NO PARKING" FIRE LANE SIGNAGE PER DETAIL 6 ON SD-01
  5. PAINT TOP AND FACE OF CURB RED FOR FIRE LANE INDICATION
  6. INSTALL ADA SIGN PER DETAIL NO. 9 ON SHEET No. SD-01

**LEGEND**

|  |                               |
|--|-------------------------------|
| --- RIGHT-OF-WAY/PROPERTY              | ■ NEW 4" CONCRETE             |
| - - - EXISTING CURB/GUTTER WHERE SHOWN | ■ NEW ASPHALTIC CONCRETE (AC) |
| - - - PROPOSED CURB/GUTTER WHERE SHOWN |                               |
| --- FLOW LINE WHERE SHOWN              |                               |
| --- CURB PAINTED RED FOR FIRE LANE     |                               |
| ⊙ BORING LOCATION                      |                               |

**ABBREVIATIONS**

|        |                        |
|--------|------------------------|
| AC     | ASPHALTIC CONCRETE     |
| BCR    | BEGIN CURB RETURN      |
| EX     | EXISTING               |
| FF     | FINISH FLOOR           |
| FG     | FINISH GRADE           |
| FL     | FLOW LINE              |
| FP     | FINISH PAD             |
| GB     | GRADE BREAK            |
| HP     | HIGH POINT             |
| SS     | SANITARY SEWER         |
| TC     | TOP OF CURB            |
| TMW    | TOP OF MODULAR WALL    |
| SW     | SIDE WALK FINISH GRADE |
| LP     | LOW POINT              |
| TOP    | TOP OF STEP            |
| BOTTOM | BOTTOM OF STEP         |
| INV.   | INVERT                 |



**DEPARTMENT OF PUBLIC WORKS**

OWNER: CITY OF LAS VEGAS  
 DEPARTMENT OF PUBLIC WORKS  
 ARCHITECTURAL SERVICES

400 EAST STEWART AVENUE  
 LAS VEGAS, NEVADA 89101  
 PHONE: (702) 229-5535  
 FAX: (702) 382-5232  
 TDD: (702) 386-9108

PROJECT: DEER SPRINGS PARK - PHASE I  
 ELKHORN & BUFFALO, LAS VEGAS, NV

PHASE ONE  
 HORIZONTAL CONTROL AND ON-SITE STRIPING PLAN

CONSULTANT: STANTEC CONSULTING, INC.  
 6757 W CHARLESTON BLVD  
 LAS VEGAS, NEVADA 89146  
 PHONE (702) 258-0115  
 FAX (702) 869-8547

REVISIONS: 1-1-04 RECORD DRAINS

DATE: 07-05-03  
 SCALE: 1" = 30'  
 SHEET NO: 02134105  
 CITY DRAW NO: 65065-1  
 SHEET NO: C-4

Call before you Dig 1-800-227-2600  
 Call before you OVERHEAD 1-702-593-6111

75602