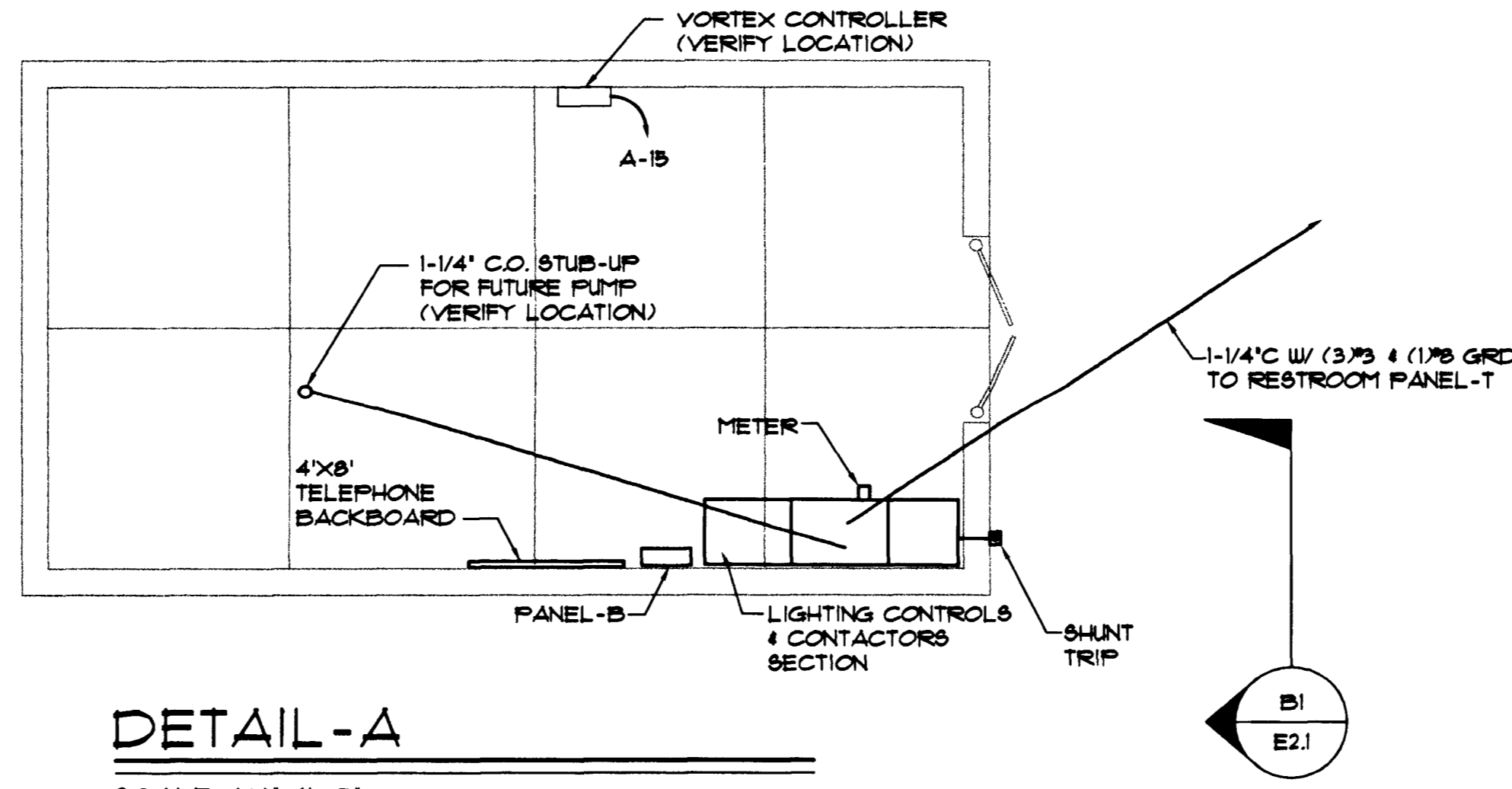


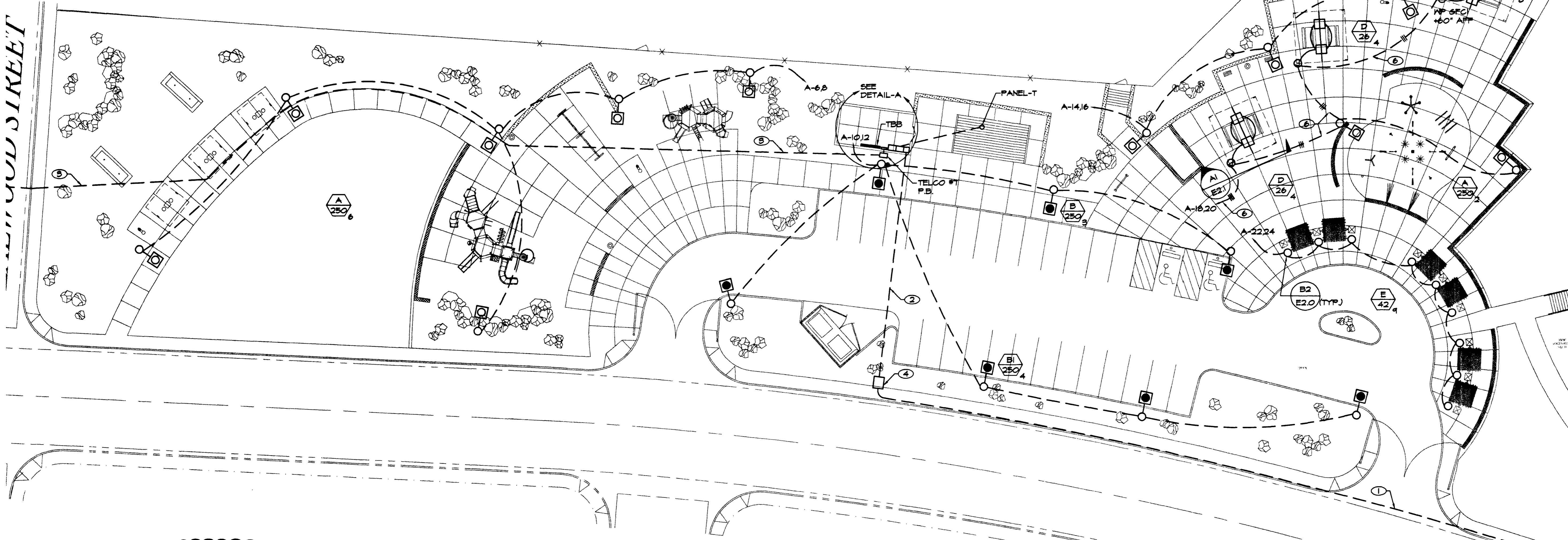
| PARK FIXTURE SCHEDULE | | | | | | | |
|-----------------------|---------------|---|-------|-------|-----------------|---------|---|
| ID | TYPE | MANUFACTURER AND CATALOG # | LAMPS | | VOLTS | REMARKS | |
| | | | NO. | WATTS | | | |
| A | POLE MOUNT | KIM LIGHTING 1A/ET2/250HPS240/CC-P/P6/CC-P WITH VSF-1A/CC-P AND PRA20-5188/FM/CC-P POLE | 1 | 250W | LU-250 | 240 | WALKWAY LIGHTS |
| A1 | POLE MOUNT | KIM LIGHTING 1A/ET2/250HPS240/CC-P/P6/CC-P-HSS WITH VSF-1A/CC-P AND PRA20-5188/FM/CC-P POLE | 1 | 250W | LU-250 | 240 | WALKWAY LIGHTS WITH HOUSE SIDE SHIELD |
| B | POLE MOUNT | KIM LIGHTING 1A/ET2/250HPS240/CC-P/P6/CC-P WITH VSF-1A/CC-P AND PRA20-5188/FM/CC-P POLE | 1 | 250W | LU-250 | 240 | PARKING LOT LIGHTS |
| B1 | POLE MOUNT | KIM LIGHTING 1A/ET2/250HPS240/CC-P/P6/CC-P-HSS WITH VSF-1A/CC-P AND PRA20-5188/FM/CC-P POLE | 1 | 250W | LU-250 | 240 | PARKING LOT LIGHTS WITH HOUSE SIDE SHIELD |
| C | POLE MOUNT | SPAULDING LIGHTING CEI-PM-M1000-N-240V-CC-P WITH 2RASGL-CC-P AND KIM #PRA22-6250/FM/CC-P POLE | 1 | 1000W | M-1000 | 240 | SINGLE FIXTURE ROLLER HOCKEY LIGHTS |
| C1 | POLE MOUNT | SPAULDING LIGHTING (2)CEI-PM-M1000-N-240V-CC-P WITH 2RASGL-CC-P AND KIM #PRA22-6250/FM/CC-P POLE | 2 | 1000W | M-1000 | 240 | TWIN FIXTURE SKATEBOARD, TENNIS AND BASKETBALL COURT LIGHTS |
| D | WALL MOUNT | INSIGHT LIGHTING WT572/BB/4/SF | 1 | 20W | F26DBX4P | 240 | SHADE CANOPY LIGHTS |
| E | UPLIGHT | KIM LIGHTING LTV22/W/REF42CFL240/GM30 | 1 | 42W | CF42DT7E/IN/835 | 240 | COLUMN UPLIGHTS |
| F | WARNING LIGHT | EDWARDS SIGNALING #49R-N5-40WH | 1 | 40W | 50LMP-40WH | 120 | FLASHING RED FLOOD HAZARD WARNING LIGHT |
| G | WARNING LIGHT | EDWARDS SIGNALING #49A-N5-40WH WITH #WBR WALL MOUNTING BRACKET | 1 | 40W | 50LMP-40WH | 120 | FLASHING AMBER TIMER WARNING LIGHT |



DETAIL-A
SCALE: 1/4" = 1'-0"

NOTES:

- (1) 1/4" C.O. PER NPCO REQUIREMENTS. INSTALL ADJACENT TO EXISTING SIDEWALK. SEE NPCO DRAWING FOR PROJECT #61416. NPCO SERVICE PLANNER IS STEVE TERRY 651-4318.
- (2) 1/4" C.O. & 1/4" C.W. (3.500 KCHIL).
- (3) 1/2" C.O. WITH FULL STRING PER TELEPHONE COMPANY REQUIREMENTS. PROVIDE 1/2" FROM TELCO FULLBOX SHOWN TO SPRINT FACILITIES ON THE WEST SIDE OF TEALWOOD (APPROX 60 FT). SAUCUT AND PATCH EXISTING SIDEWALK AND STREET TO MATCH EXISTING. SEE SPRINT DRAWINGS. SPRINT SERVICE PLANNER IS PAT RICHARDSON, 702-244-1846.
- (4) 4'-0" x 4'-6" TRANSFORMER PAD PER NPCO REQUIREMENTS.
- (5) UNLESS NOTED OTHERWISE, ALL CONDUIT 3/4" C.W. (2.710) & (1.710 GRD).
- (6) 3/4" C.W. (3.710) & (1.710 GRD).
- (7) ALL UNDERGROUND CONDUCTORS SHALL BE THW.
- (8) ALL SITE LIGHTING SHALL BE 1-1/4" C.W. (2.710) & (1.710 GRD). MINIMUM CONDUIT SHALL BE A MINIMUM OF 24" BELOW GRADE WITH A WARNING TAPE AT 12" BELOW FINISHED GRADE. CONDUIT RUN BENDS SHALL NOT EXCEED 210. AND SHALL NOT EXCEED 300 FEET IN LENGTH. ALL EMPTY CONDUITS SHALL HAVE A FULL STRING.
- (9) ALL FULLBOXES IN GRASS OR DIRT AREAS SHALL HAVE AN 8" CONCRETE COLLAR WITH #4 REBAR. CONDUITS SHALL BE 3" ABOVE BOTTOM OF BOX. CONDUCTORS SHALL EXTEND 24" OUTSIDE OF BOX.
- (10) ALL FULLBOX COVERS SHALL BE FIBERGLITE OR BONDED METAL. LIGHTING SYSTEM COVERS SHALL BE MARKED 'LIGHTING'. LIDS SHALL BE SECURED WITH BRASS TIE-DOWNS.
- (11) ALL 120V SITE FIXTURES SHALL BE SINGLE FUSED; 240V SITE FIXTURES SHALL BE DOUBLE FUSED. FUSES SHALL BE AT THE TOP OF THE POLE FOR BASIN FIXTURES, AT BASE OF POLE ELSEWHERE. FUSE HOLDERS SHALL BE SPLICED TO FEEDER CONDUCTORS USING SPLIT BOLT CONNECTORS - NO WIRENUTS. FUSE HOLDERS SHALL BE DOUBLE CRIMPED WITH RUBBER BOOTS.



RECORD DRAWINGS:
THIS RECORD DRAWING, DATED FEBRUARY 25, 2022, HAS BEEN PREPARED, IN PART, BASED UPON INFORMATION FURNISHED BY OTHERS. WHILE THIS INFORMATION IS BELIEVED TO BE RELIABLE, PROFESSIONAL DESIGN ASSOCIATES INC. CANNOT ASSURE ITS ACCURACY, AND THIS IS NOT RESPONSIBLE FOR THE ACCURACY OF THIS RECORD DRAWING OR FOR ANY ERRORS OR OMISSIONS WHICH MAY HAVE BEEN INCORPORATED INTO IT AS A RESULT. THOSE RELYING ON THIS RECORD DOCUMENT ARE ADVISED TO OBTAIN INDEPENDENT VERIFICATION OF ITS ACCURACY BEFORE APPLYING IT FOR ANY PURPOSE.

ELECTRICAL SITE PLAN
SCALE: 1" = 20'-0"

KEY PLAN
SCALE: NONE

Avoid cutting underground utility lines. It's costly.
Call before you Dig.
1-800-227-2800
UNDERGROUND SERVICE ALERT (USA)

Avoid hitting overhead power lines. It's costly.
CALL BEFORE YOU DO OVERHEAD
CALL 1-702-593-6111

MATCHLINE - SEE SHEET ES12 FOR CONTINUATION



REVISIONS
 1 8/20/18 REVISED SHEET FOR ADDITION
 2 2/25/22 RECORD DRAWINGS

LUCCHESI GALATI
 900 PILOT ROAD, SUITE A
 LAS VEGAS, NEVADA 89119
 (702) 259-7711

Engineering Solutions
PDA
 From Outside the Box
 Professional Design Associates, Inc.
 108 Market Street
 Henderson, NV 89015
 (702) 587-1022
 email: GTFoster@engineer.com

DEPARTMENT OF PUBLIC WORKS
 ELKHORN SPRINGS
 NEIGHBORHOOD PARK
 BUFFALO DRIVE
 ELECTRICAL SITE PLAN AND
 FIXTURE SCHEDULE

OWNER: CITY OF LAS VEGAS
 DEPARTMENT OF PUBLIC WORKS
 ARCHITECTURAL SERVICES

400 EAST STEWART AVENUE
 LAS VEGAS, NEVADA 89101
 PHONE: (702) 229-6535
 FAX: (702) 362-8232
 TDD: (702) 386-9108

| | |
|-------------|-------------|
| DATE | 1/20/22 |
| SCALE | 1" = 20'-0" |
| NO. | 01.15301.16 |
| REVISED NO. | 650.64 |
| SHEET NO. | 72 OF 90 |
| PROJECT NO. | ES1.1 |

48287