



REVISIONS
ADDENDUM #2, 05-10-01
AS-BUILT DRAWINGS



800 PILOT ROAD, SUITE A
LAS VEGAS, NEVADA 89118
(702) 266-7711

LOCHSA
ENGINEERING

5828 Spring Mountain Rd.
Suite 308
Las Vegas, Nevada, 89146
Phone (702) 365-9312
Fax (702) 365-9317

ELKHORN SPRINGS
NEIGHBORHOOD PARK
BUFFALO DRIVE
DEMOLITION PLAN

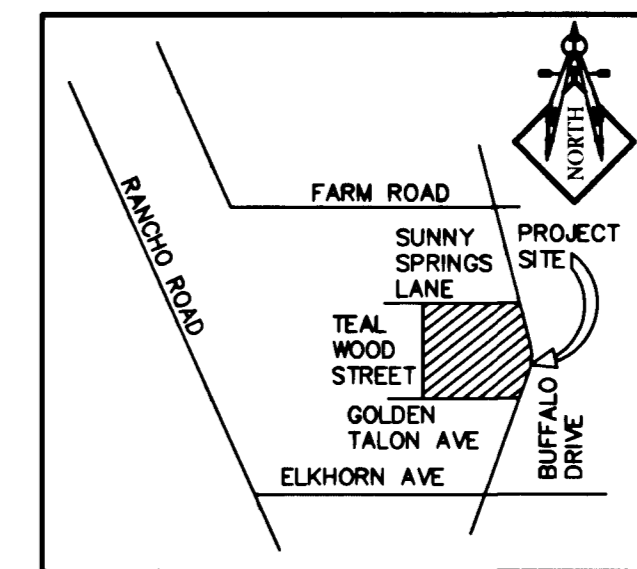
STAMP

OWNER: CITY OF LAS VEGAS
DEPARTMENT OF PUBLIC WORKS
ARCHITECTURAL SERVICES

400 EAST STEWART AVENUE
LAS VEGAS, NEVADA 89103
PHONE: (702) 229-6535
FAX: (702) 382-3232
TDD: (702) 386-9108

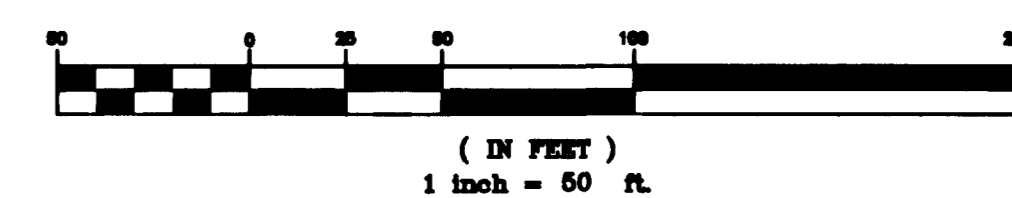
DRAWN: M.H.F.
FILE: 6464DEHD0103
DATE: MARCH 9, 2001
SCALE: 1"=50'
SHEET NO: 01.15301.16
SHEET COUNT: 650.64

6 OF 90
C2.1



AREA MAP
NO SCALE

GRAPHIC SCALE



APN 125-16-813-003, (71-002)

BASE OF BEARING

S 23°07'07" E BEING THE CENTERLINE OF BUFFALO DRIVE AS PER PLAT BOOK 74, PAGE 1 OF CLARK COUNTY OFFICIAL RECORDS.

BENCHMARK

CITY OF LAS VEGAS STATION #1LV90 22W6, BEING A RIVET AND PLATE ON POWER-TRANS PAD, 7535 W. DEER SPRINGS ROAD, 500' E OF BUFFALO DRIVE.

ELEV: 2388.00' NAVD88

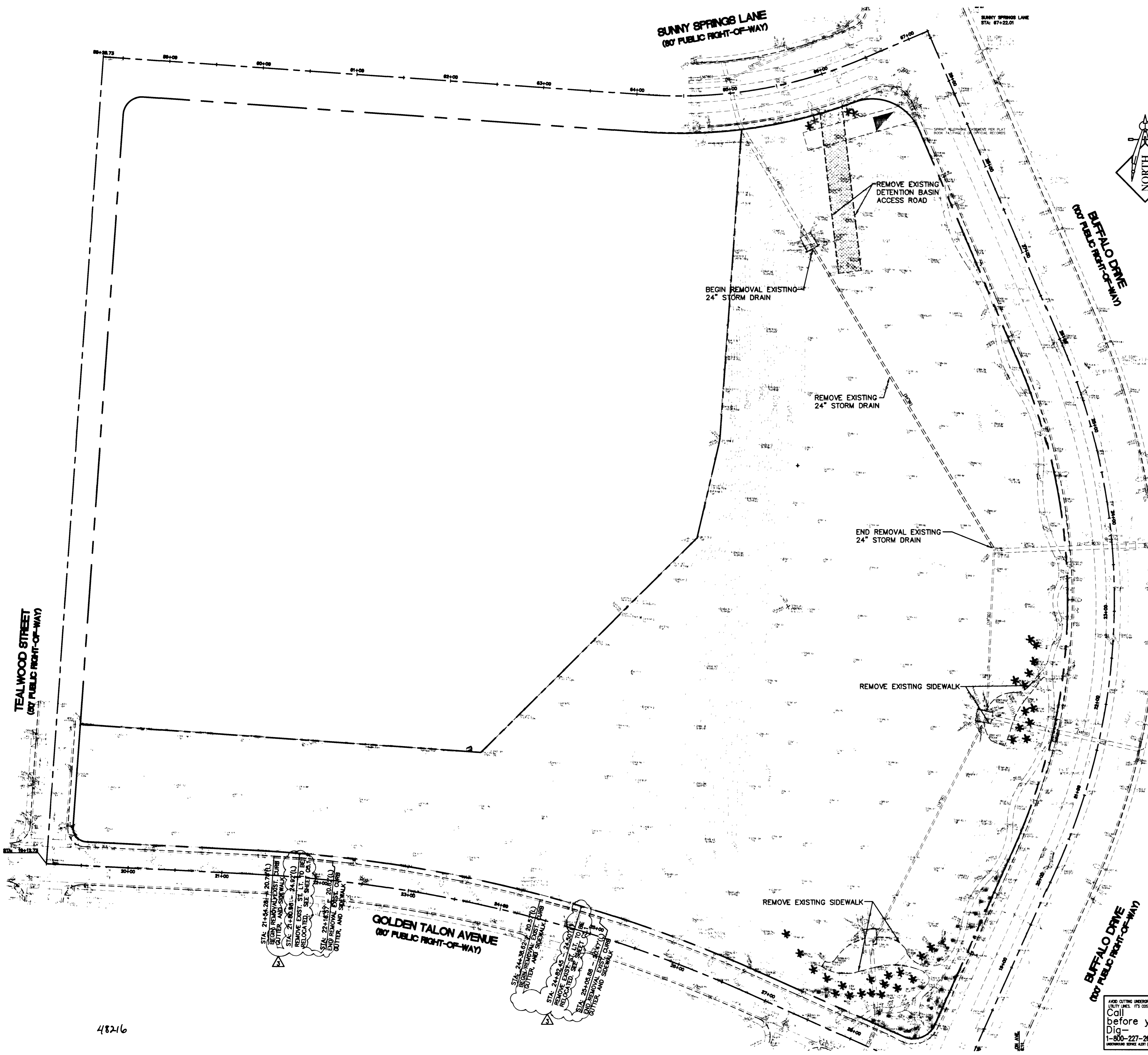
AS-BUILT DRAWING

This record drawing, dated February 25, 2002, has been prepared, in part, based upon information furnished by others. While this information is believed to be reliable, Lochsa Engineering, cannot assure its accuracy, and thus is not responsible for the accuracy of this record drawing or for any errors or omissions which may have been incorporated into it as a result. Those relying on this record document are advised to obtain independent verification of its accuracy before applying it for any purpose.

EXISTING		PROPOSED		EXISTING		PROPOSED	
---	RIGHT-OF-WAY	---	CENTERLINE	---	PROPERTY LINE	---	SAWTOOTH LINE
---	WATER LINE	---	SANITARY SEWER LINE	---	STORM DRAIN	---	POWER LINE/POWER POLE
---	TELEPHONE LINE	---	FIRE HYDRANT	---	WATER VALVE	---	METERS/PULL BOXES
---	REDUCER	---	MANHOLE	---	CLEANOUT	---	CONTOUR
---	A.C. PAVING	---	TYPE "L" CURB & GUTTER	---	TYPE "A" CURB	---	CONCRETE
---	OVERHEAD POWER	---	RETAINING WALL	---	FENCE	---	SCARP
---	GRADE BREAK	---	FINISH FLOOR	---	CLEANOUT INVERT ELEV.	---	FLOW DIRECTION
---	FINISH GRADE	---	TOP OF CURB	---	TOP OF WALL	---	GATE
---	TOP OF WALL	---	GATE	---	SIGN	---	
				STREET LIGHTS			
---	100 W.H.P.S.	---	150 W.H.P.S.	---	200 W.H.P.S.	---	250 W.H.P.S.

Call before you Dig
1-800-227-2600
1-702-593-6111

LOCHSA ENGINEERING ASSUMES NO RESPONSIBILITY FOR EXISTING UTILITY LOCATIONS AND ELEVATIONS. THE UTILITIES SHOWN ON THIS DRAWING HAVE BEEN PLOTTED FROM THE BEST AVAILABLE INFORMATION. IT IS, HOWEVER, THE CONTRACTOR'S RESPONSIBILITY TO FIELD VERIFY THE LOCATION AND ELEVATION OF ALL UTILITIES PRIOR TO THE COMMENCEMENT OF ANY CONSTRUCTION. CONTRACTOR TO FIELD VERIFY ALL EXISTING SITE CONDITIONS PRIOR TO CONSTRUCTION. IF A CONFLICT EXISTS BETWEEN WHAT IS SHOWN ON THESE DRAWINGS AND WHAT EXISTS IN THE FIELD, THE CONTRACTOR IS TO NOTIFY THE ARCHITECT, OWNER'S REPRESENTATIVE OR ENGINEER IMMEDIATELY.



STA. 21+58.28 TO 20+74.00
BEGIN REMOVE EXISTING CURB
AND GUTTER AND SIDEWALK
STATIONED AT 21+58.28
STATIONED AT 20+74.00
STATIONED AT 21+58.28
STATIONED AT 20+74.00
STATIONED AT 21+58.28
STATIONED AT 20+74.00

STA. 24+92.45 TO 24+00.00
BEGIN REMOVE EXISTING CURB
AND GUTTER AND SIDEWALK
STATIONED AT 24+92.45
STATIONED AT 24+00.00
STATIONED AT 24+92.45
STATIONED AT 24+00.00

48216