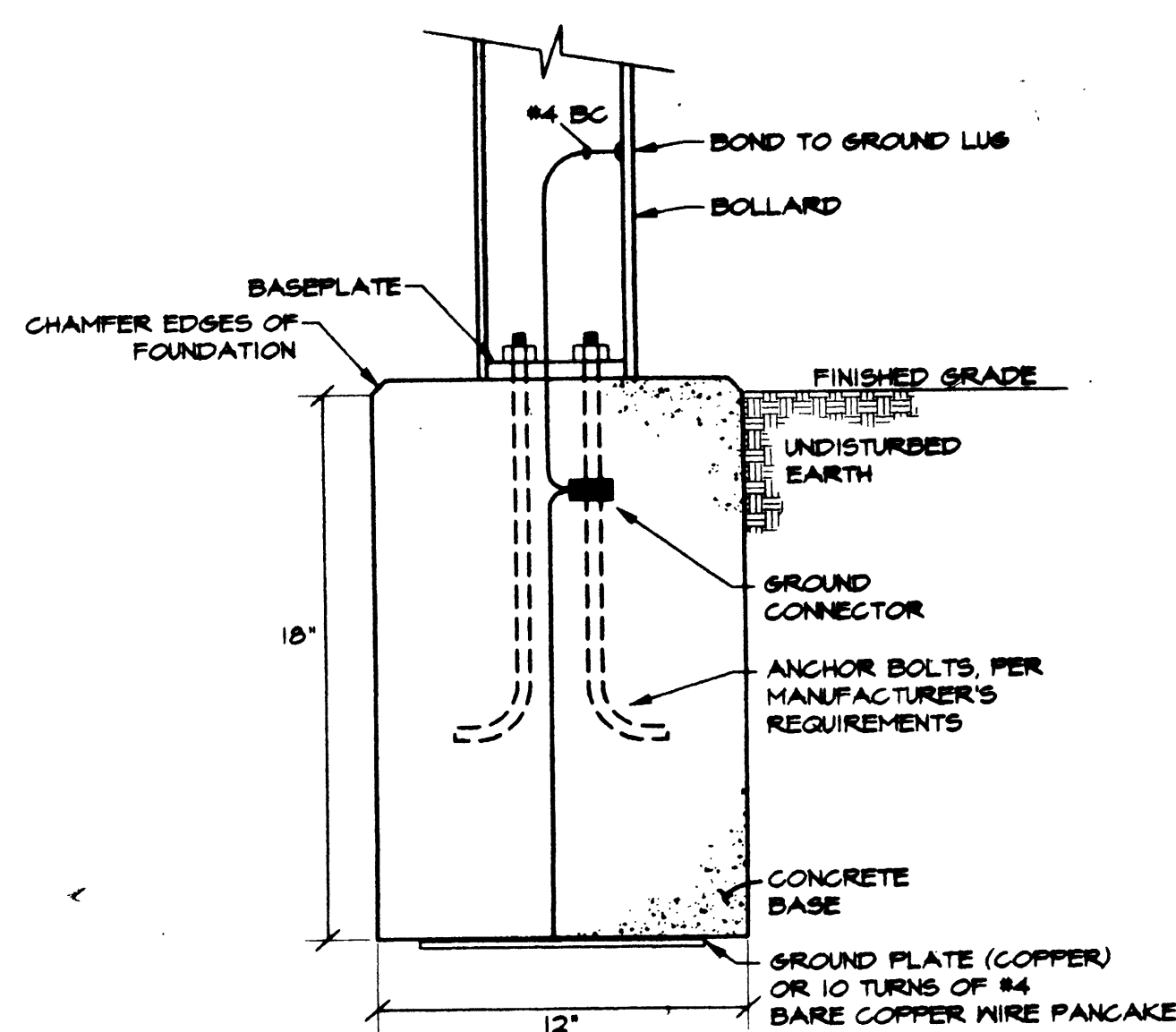
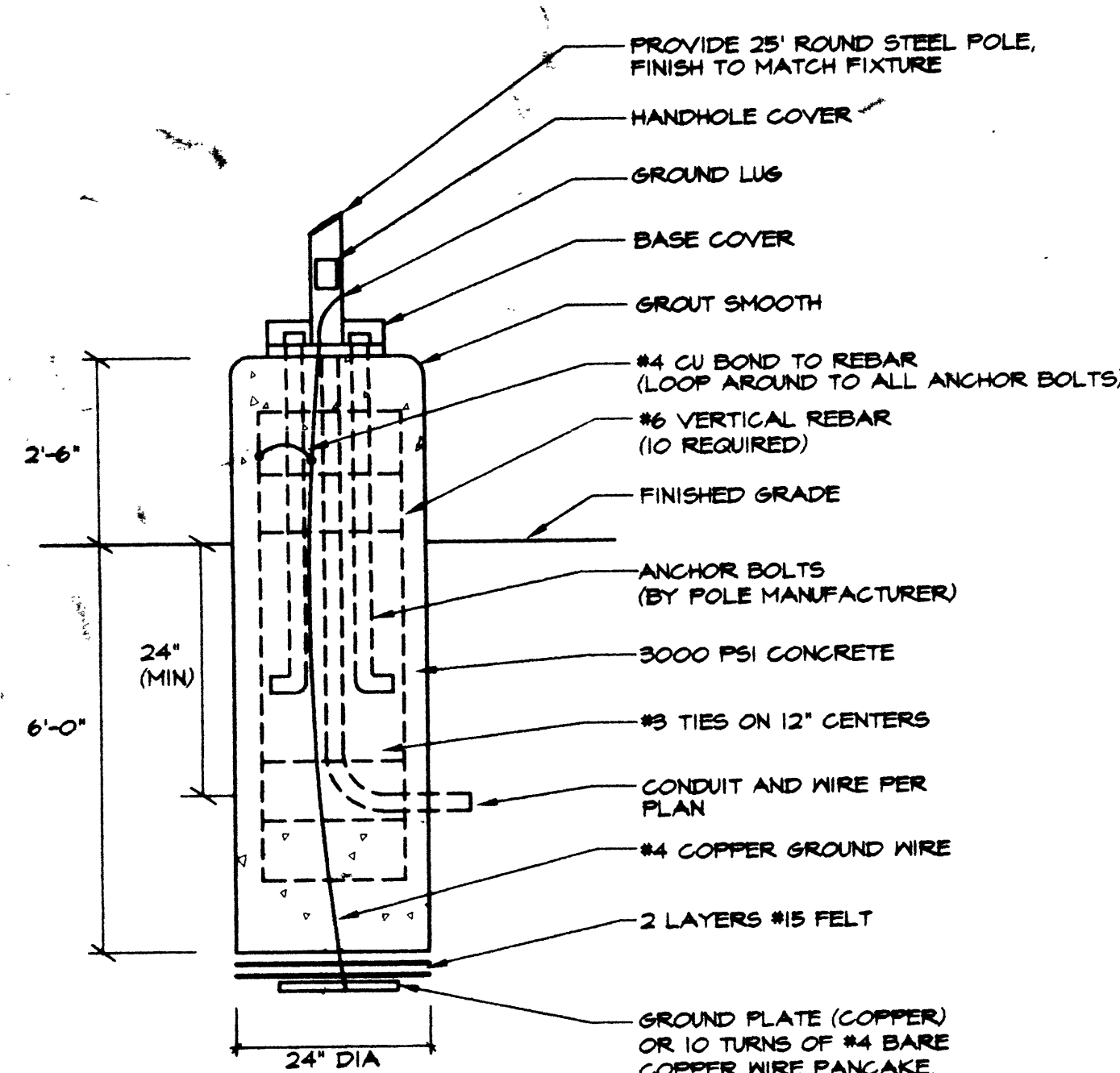


**1** FIXTURE F7 MOUNTING DETAIL  
E-1.0 NOT TO SCALE

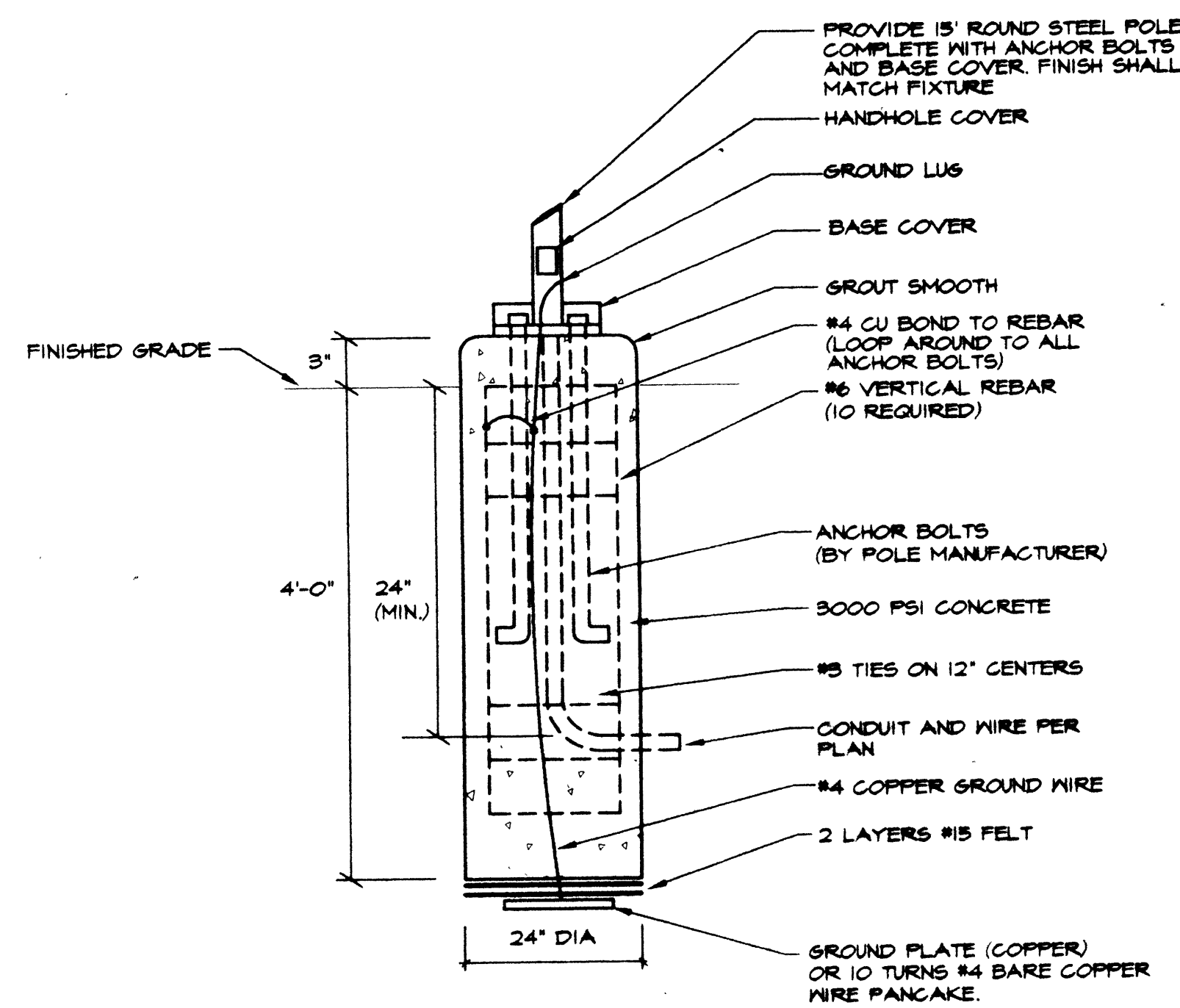


**2** BOLLARD FOUNDATION - F2  
E-1.0 NOT TO SCALE



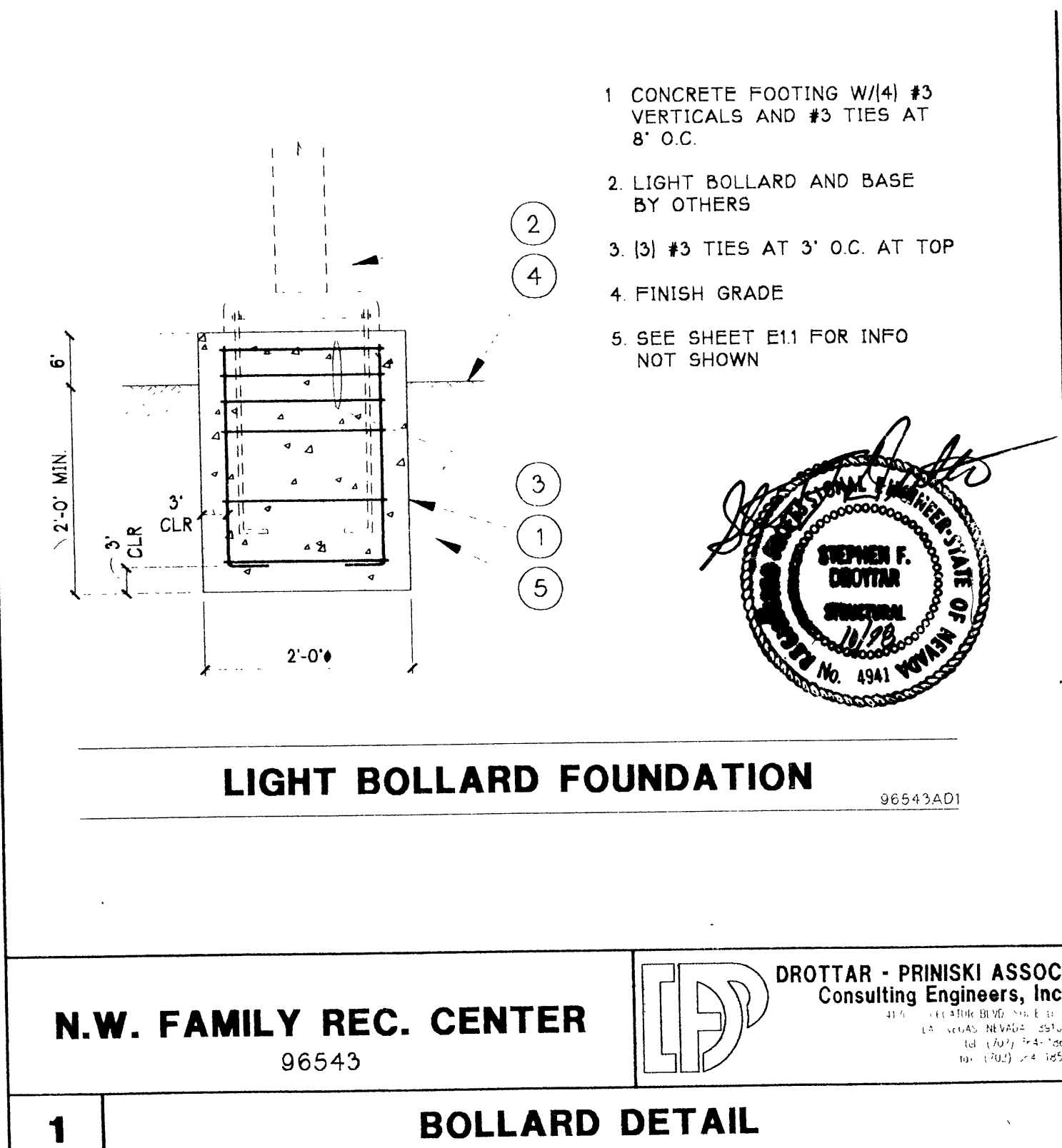
**3** FIXTURE FOUNDATION - F4 AND F5  
E-1.0 NOT TO SCALE

NOTE: POLE AND LUMINAIRE ASSEMBLY SHALL WITHSTAND 100 MPH WIND WITH 1.5 GUST FACTOR.



**4** FIXTURE FOUNDATION - F3  
E-1.0 NOT TO SCALE

NOTE: POLE AND LUMINAIRE ASSEMBLY SHALL WITHSTAND 100 MPH WIND WITH 1.5 GUST FACTOR.



N.W. FAMILY REC. CENTER  
96543

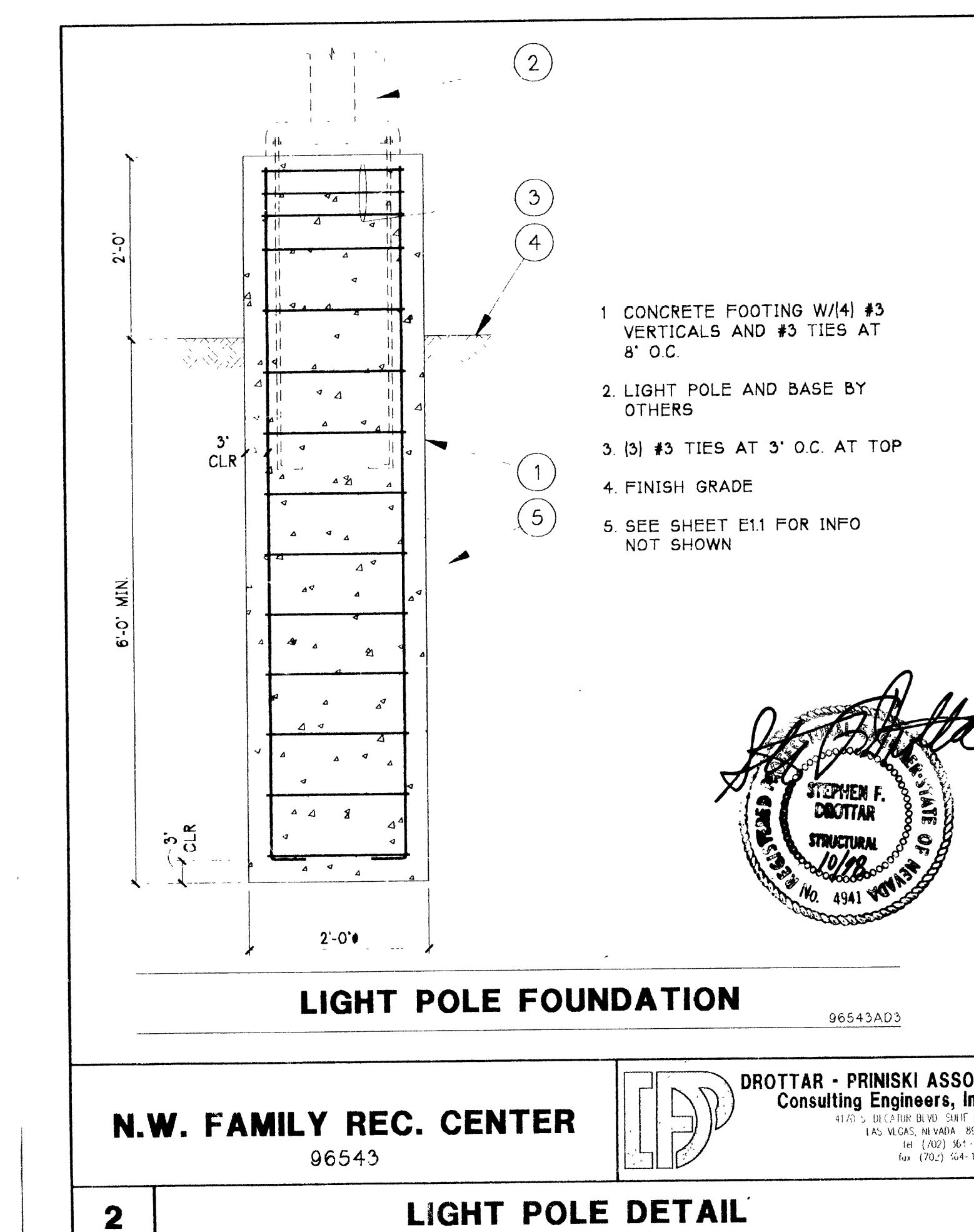
**1** BOLLARD DETAIL

LIGHTING FIXTURE SCHEDULE						
FIXT ID	TYPE	MANUFACTURER AND CATALOG NO.	LAMPS		CKT VLTS	REMARKS AND MOUNTING
			NO.	WATT		
F1	HID LOW-LEVEL RECESSED LUMINAIRE	HOLDCAST HCL-5-04-16-2T-TPH-FU	1	100	MOR/CO/UMED	COORDINATE LOCATION WITH ARCHITECTURAL DRAWINGS. 2'-0" AFF
F2	HID CAST ALUMINUM BOLLARD	BESA 4488 MH	1	100	MOR/CO/UMED	COLOR TO MATCH REST OF BOLLARDS ON SITE.
F3	HID ROUND POST TOP WITH DOME TOP	GARDCO NP17150GNQT7TNP-LF	1	100	MOR/CO/UMED	PROVIDE POLE AND FOUNDATION PER DETAIL THIS SHEET.
F4	HID ROUND WITH DOME TOP AND SINGLE ARM HTS.	GARDCO HA2218400HQT7TNP-LF	1	400	MOR/CO/UMED	PROVIDE POLE AND FOUNDATION PER DETAIL THIS SHEET.
F5	HID ROUND WITH DOME TOP AND TRIPLE ARM HTS.	GARDCO HA2228400HQT7TNP-LF	2	400	MOR/CO/UMED	PROVIDE POLE AND FOUNDATION PER DETAIL THIS SHEET.
F6	HID PERIMETER CUTOFF-SURFACE MOUNT	BETA BCA40K35-DI-2-80ESB-TI	1	30	MOR/CO/UMED	MOUNT TO SHADE STRUCTURE
F7	HID GRADE MOUNTED UPLIGHT	HYDREL H1028H1002T7TNP-L-34R58-4I	1	100	MOR/CO/UMED	MOUNT PER DETAIL THIS SHEET.

CONTACTOR SCHEDULE				
CONTACTOR #	RATING	NO. POLES	CONTROLLED BY	CIRCUITS CONTROLLED
C1	50A	4	PHOTOCELL	H-14, 16

ELECTRICAL LEGEND	
[Symbol]	PANELBOARD SURFACE MOUNTED
[Symbol]	SWITCHBOARD
[Symbol]	TRANSFORMER
[Symbol]	DISCONNECT SWITCH F INDICATES FUSIBLE (DASHED LINES = EXISTING)
[Symbol]	TELEPHONE TERMINAL BOARD 4" X 8" X 3/4" FIRE TREATED PLYWOOD
[Symbol]	DUPLEX RECEPTACLE 16" AFF UNLESS NOTED OTHERWISE #P INDICATES WEATHERPROOF OUTLET
[Symbol]	SWITCH (48" AFF UNLESS NOTED OTHERWISE)
[Symbol]	ELECTRIC SHEET NOTE DESIGNATION
[Symbol]	MECHANICAL EQUIPMENT DESIGNATION
[Symbol]	BRANCH CIRCUIT CONSISTING OF 2#12 IN MINIMUM SIZE 1" CONDUIT NOT INCLUDING GROUND WIRE, OR AS NOTED ON DRAWINGS
[Symbol]	HOME RUN TO PANELBOARD OR DEVICE - NUMBER OF ARROW HEADS INDICATES NUMBER OF CIRCUITS
[Symbol]	BRANCH CIRCUIT - SHORT SLASHES INDICATE NUMBER OF PHASE OR SWITCH LEGS, LONG SLASHES INDICATE NUMBER OF NEUTRALS, LONG SLASH PV A DOT INDICATES A SEPARATE ISOLATED GROUND WIRE
[Symbol]	CONDUIT IN SLAB OR UNDERGROUND
[Symbol]	INTERRUPTER SWITCH
[Symbol]	DUPLEX RECEPTACLE 6" AFF UNLESS NOTED OTHERWISE
[Symbol]	JUNCTION BOX
[Symbol]	FUSE
[Symbol]	CIRCUIT BREAKER
[Symbol]	METERING (DASHED LINES = EXISTING)
[Symbol]	PULLBOX, SIZE NO. 3-1/2 UNLESS NOTED OTHERWISE
[Symbol]	IRRIGATION CONTROLLER
[Symbol]	CONTACTOR
[Symbol]	SHUNT TRIP OR CONTROL STATION
[Symbol]	PAY TELEPHONE OUTLET 48" AFF UNO
[Symbol]	SURFACE MOUNTED FLUORESCENT FIXTURE
[Symbol]	SURFACE MOUNTED HID OR INCANDESCENT
[Symbol]	ARM MOUNTED HID COURT FIXTURE - TYPE 4
[Symbol]	ARM MOUNTED HID COURT FIXTURE - TYPE 5
[Symbol]	FLUORESCENT SIGN LIGHT (GRADE MOUNTED)
[Symbol]	CEILING MOUNTED FLUORESCENT FIXTURE
[Symbol]	POST TOP HID AREA FIXTURE
[Symbol]	RECESSED LOW LEVEL WALL LIGHT
[Symbol]	ASTRONOMICAL TIMECLOCK
[Symbol]	TIMING CONTROL CENTER

ABBREVIATIONS	
C	CONDUIT
C.O.	CONDUIT ONLY
O.C.	ON CENTER
UNO.	UNLESS NOTED OTHERWISE



N.W. FAMILY REC. CENTER  
96543

**2** LIGHT POLE DETAIL

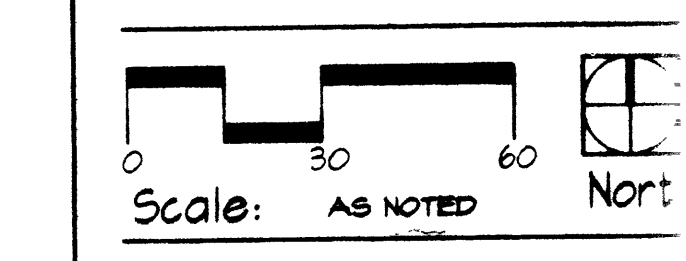
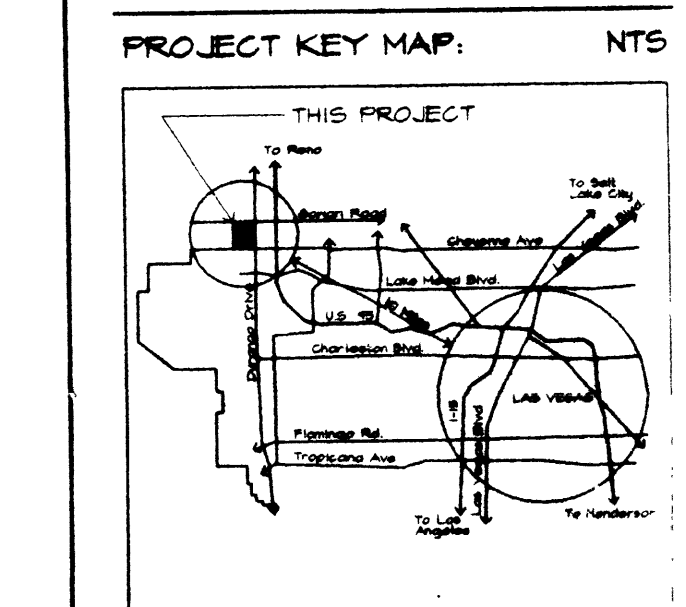
**DESIGNWORKSHOP**  
LANDSCAPE ARCHITECTURE  
LAND PLANNING  
URBAN DESIGN  
TOURISM PLANNING  
310 South Hill Ave. Suite 201  
TAMPE, ARIZONA 85281  
(602) 944-5881  
Albuquerque • Aspen • Denver  
San Paulo • Santa Fe • Tampa • Vail  
Jackson Hole

CONSULTANT:  
**JKROB** CONSULTING ENGINEERS, INC.  
1919 S. JONES BLVD. SUITE B  
LAS VEGAS, NEVADA 89102  
(702) 871-3821  
ELECTRICAL ENGINEERING

**NORTHWEST FAMILY RECREATIONAL COMPLEX**  
CITY OF LAS VEGAS, NEVADA

**ELECTRICAL LEGEND AND DETAILS**

CONSTRUCTION DOCUMENTS  
ISSUE DATE: 10/24/07  
DRAWN: JTKM JOB NO: 105/LEGEN  
REVIEWED: TOM KROB  
REVISIONS/DESCRIPTION:  
1. 6/30/08 APPENDUM 1



SHEET NUMBER  
**E-10**

Design Workshop, Inc. Oct 10/07  
33 OF 37  
65054

**RECORD DRAWINGS**  
36 OF 118  
650.59

27049