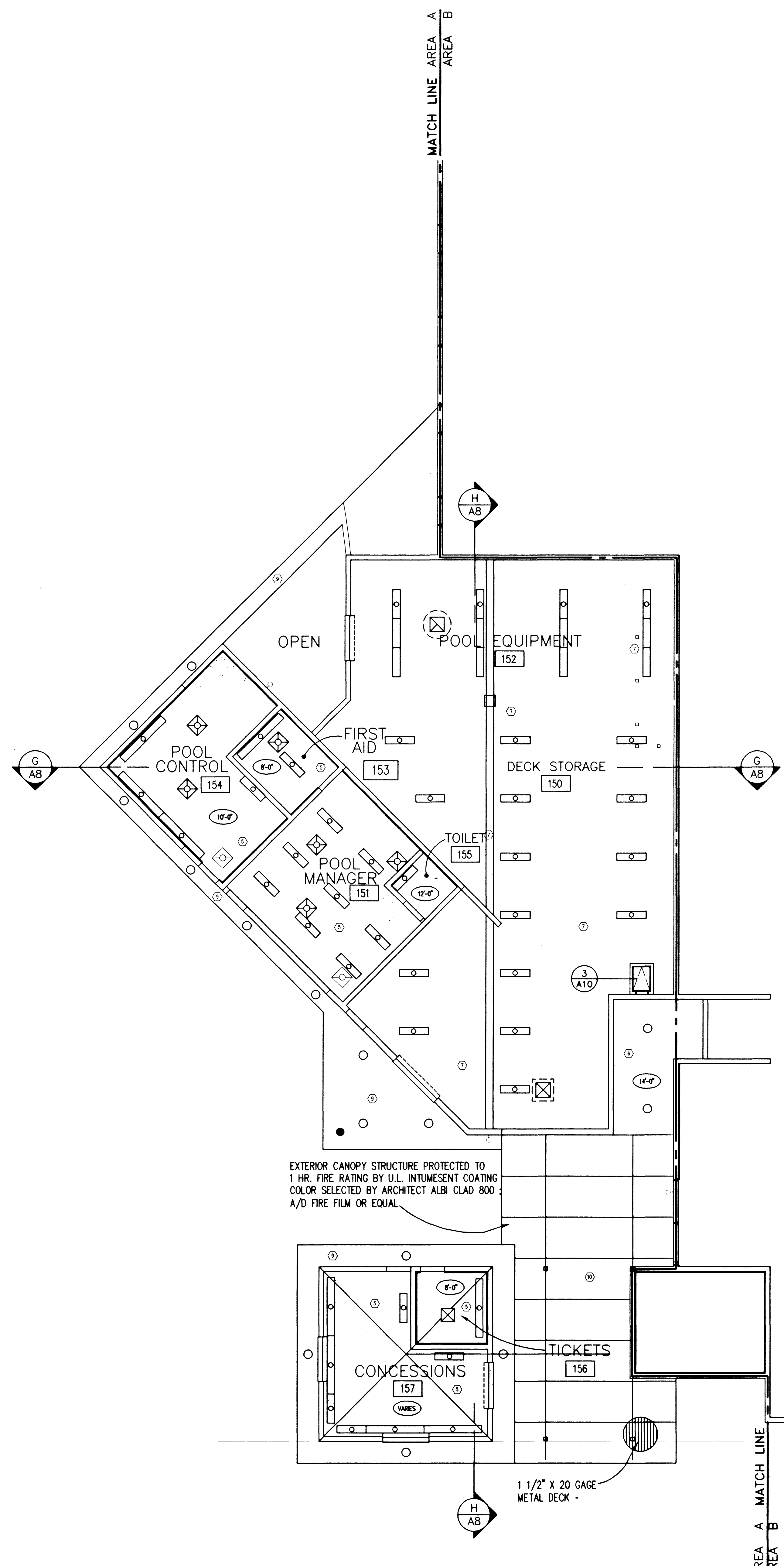


1 ROOF PLAN AREA A
SCALE: 1/8" = 1'-0"

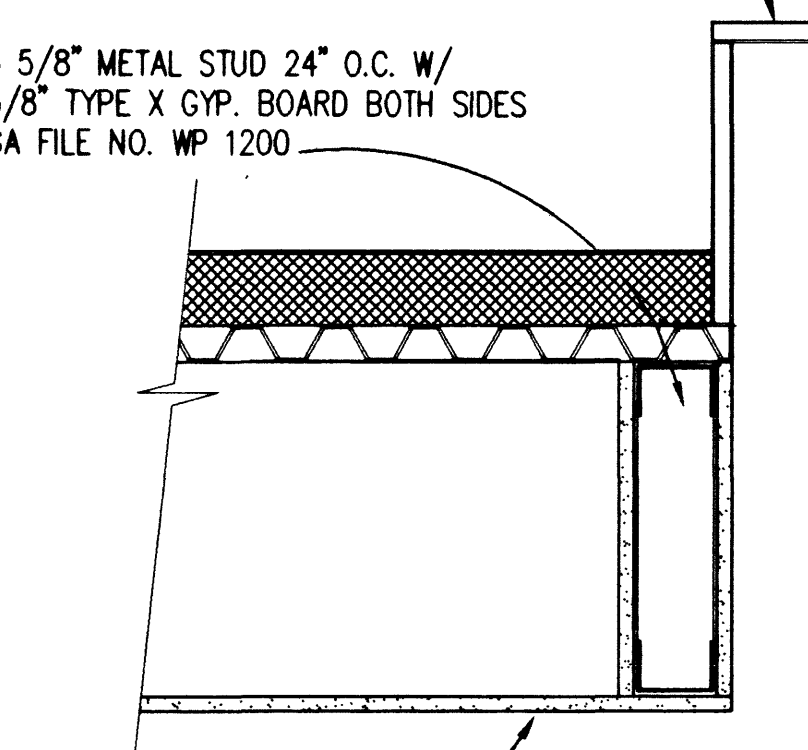


2 REFLECTED CEILING PLAN AREA A
SCALE: 1/8" = 1'-0"

LEGEND/CEILING KEY

- ① SUSPENDED ACOUSTICAL GRID SYSTEM W/ LAY-IN PANELS (222 / 224 AS SHOWN ON DWG.) U.L. P225
- ② A.C.T. PLAIN REF. SPECS. U.L. P225
- ③ A.C.T. REGULAR REF. SPECS. U.L. P225
- ④ SUSPENDED 2x2 ACOUSTICAL GRID SYSTEM - SPECIAL LAY-IN PANELS - WITH CHROME GRID - REF. SPECS.
- ⑤ METAL LINEAR
- ⑥ SUSPENDED 5/8" TYPE 'X' GYPSUM BOARD ON 7/8" FURRING CHANNELS @ 16" O.C. @ 1 1/2" COLD ROLLED CHANNELS @ 16" O.C. U.L. P508
- ⑦ SYNTHETIC PLASTER - PAINTED U.L. P508
- ⑧ DIRECT TO JOIST 5/8" TYPE 'X' GYP BOARD ON FURRING CHANNELS U.L. P508 SKYLIGHT
- ⑨ PREFABRICATED METAL SOFFIT (VENTED)
- ⑩ OPEN CEILING (BY METAL BLDG. MFR.) WITH EXPOSED BEAMS, PURLINS & SKYLIGHT PANELS
- ⑪ OPEN STRUCTURE - PAINTED
- ⑫ OPEN STRUCTURE - UNFINISHED
- ⑬ 1 HOUR CORRIDOR/WALL
- ⑭ 2 HOUR WALL
- ⑮ 2x4 LAY-IN FLUORESCENT LIGHT FIXTURES
- ⑯ RECESSED FLUORESCENT LIGHT FIXTURES
- ⑰ 4" SUSPENDED FLUORESCENT LIGHT FIXTURES WITH PROTECTIVE WIRE GRILLE COVERS
- ⑱ 4" SURFACE MOUNTED FLUORESCENT LIGHT FIXTURES
- ⑲ WALL MOUNTED INCANDESCENT LIGHT FIXTURES
- ⑳ RECESSED LIGHT FIXTURE
- ㉑ SUSPENDED HIGH-BAY LIGHT FIXTURES
- ㉒ EXT. SIGN
- ㉓ FIRE ALARM
- ㉔ DIFFUSERS (VARIOUS SIZES)
- ㉕ RETURN GRILLES (VARIOUS SIZES)
- ㉖ EXHAUST REGISTERS (VARIOUS SIZES)
- ㉗ SUSPENDED UNIT HEATERS
- ㉘ EWAP COOLER SUSPENDED DUCTS WITH DIFFUSERS
- ㉙ SUPPLY & RETURN DUCTS (VARIOUS SIZES)

ROOF HATCH PER SPEC.



RATED ROOF CEILING ASSEMBLY REFER ER-1

3 ROOF HATCH TYP.
SCALE: 1 1/2" = 1'-0"



54 OF 118
650.59

Any use or reproduction of this document or the attached drawings, or the use of the design approach, show or concepts described in this document and the attached drawings, in whole or in part by any person whatsoever is strictly prohibited except by the selection of HSA Architects, Inc. as the Architect of Record for the Project, and only to the specific written consent of HSA Architects, Inc.'s Executive Corporation.
COPYRIGHT 1997, HSA ARCHITECTS, INC.

| | | |
|----------|-------------|------|
| REVISION | DESCRIPTION | DATE |
| | | |

| | | |
|----------|-------------|------|
| REVISION | DESCRIPTION | DATE |
| | | |

WAYNE SCHREINER AIA
THOMAS M. SILVA AIA

1535 WEST OAKLEY BLVD.
LAS VEGAS, NV 89102
(702) 383-0077
FAX (702) 383-0037
HSA ARCHITECTS

Sheet Title ROOF PLAN AND REFLECTED CEILING PLAN - AREA A
Job Title CITY OF LAS VEGAS DEPARTMENT OF PARK AND LEISURE ACTIVITIES
DURANGO RECREATION FACILITY
Job 960901
Date 20 FEB. 1998
Drawn By CRL
Check WPS
Sheet A10

13 OF 36