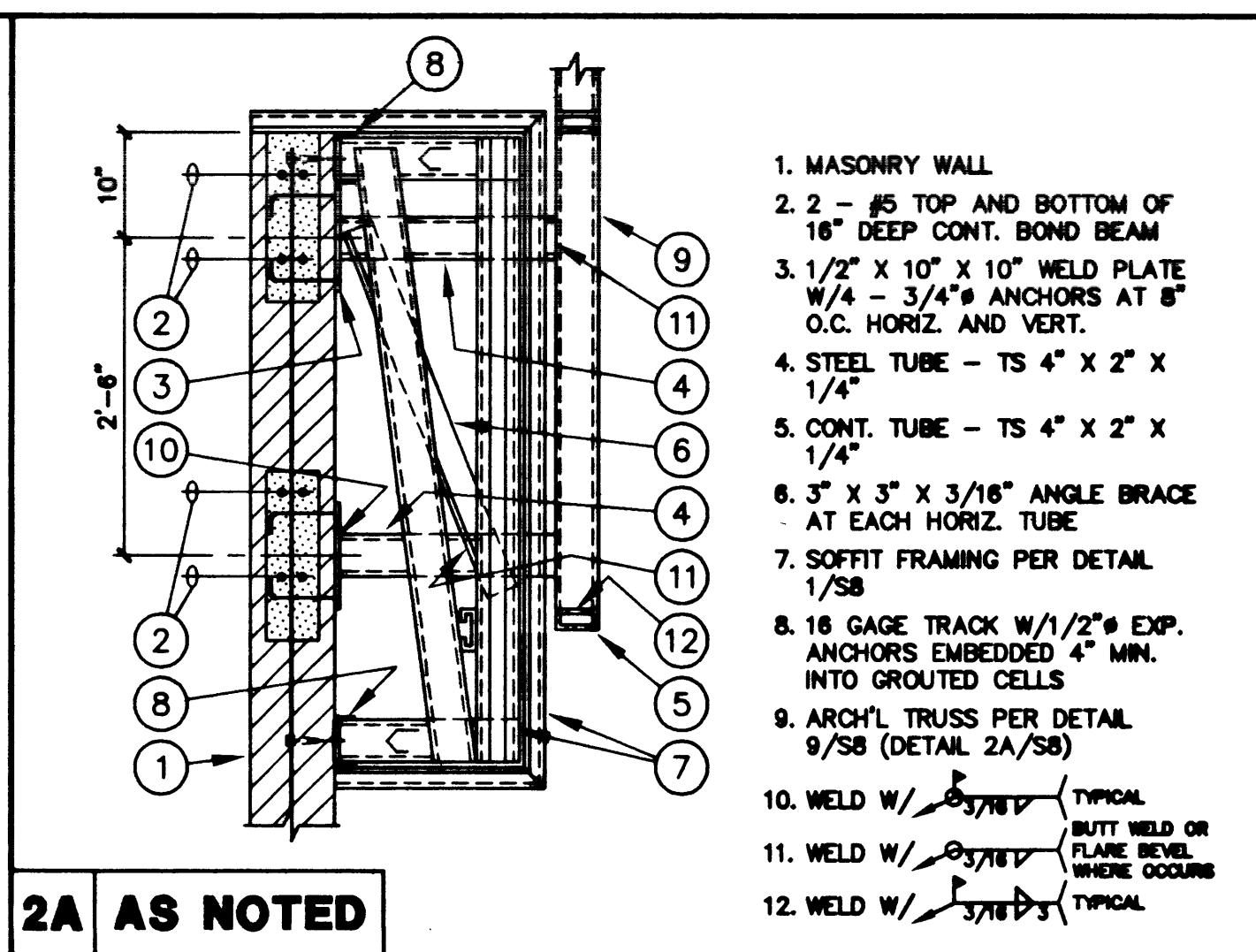


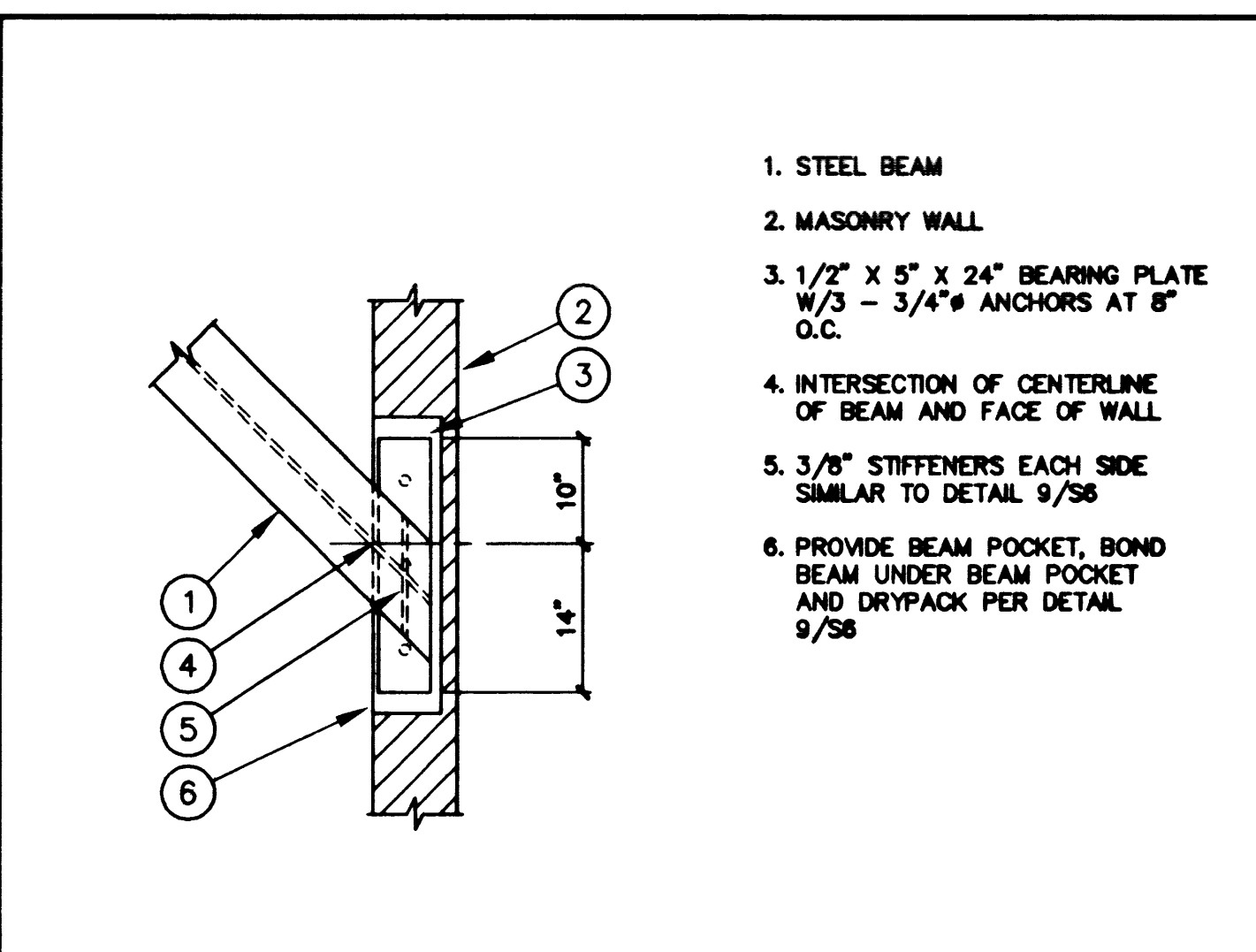
- METAL DECK - SEE PLAN FOR TYPE AND GSN FOR ATTACHMENT
- 4" X 18 GAGE STEEL STUDS AT 18" O.C., TYP.
- 4" X 18 GAGE STEEL STUD BRACES AT 4'-0" O.C.
- 3" X 3" X 3/16" CONT. ANGLE AT CORNERS
- CONT. 4" X 18 GAGE STUD
- STEEL BEAM
- CLIP ANGLE PER DETAIL 5/SB
- WELD W/ 3/8" TYPICAL

1 CROSS SECTION AT ARCH'L SOFFIT 33522021



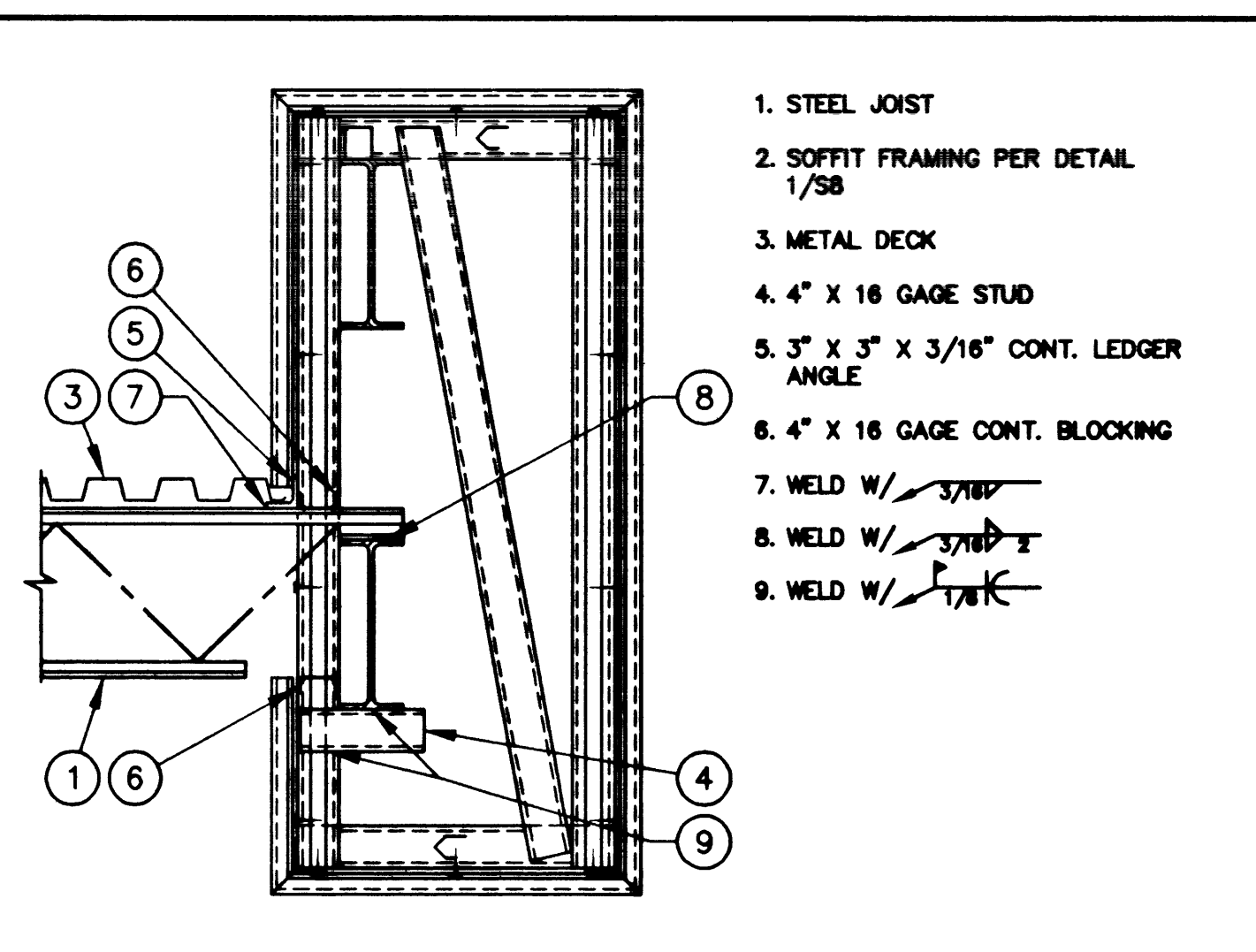
- MASONRY WALL
- 2 - #5 TOP AND BOTTOM OF 16" DEEP CONT. BOND BEAM
- 1/2" X 10" X 10" WELD PLATE W/3 - 3/4" ANCHORS AT 8" O.C. HORIZ. AND VERT.
- STEEL TUBE - TS 4" X 2" X 1/4"
- CONT. TUBE - TS 4" X 2" X 1/4"
- 3" X 3" X 3/16" ANGLE BRACE AT EACH HORIZ. TUBE
- SOFFIT FRAMING PER DETAIL 1/SB
- 16 GAGE TRACK W/1/2" EXP. ANCHORS EMBEDDED 4" MIN. INTO GROUTED CELLS
- ARCH'L TRUSS PER DETAIL 9/SB (DETAIL 2A/SB)
- WELD W/ 3/8" TYPICAL
- WELD W/ 3/8" TYPICAL
- WELD W/ 3/8" TYPICAL

2A AS NOTED 33522022



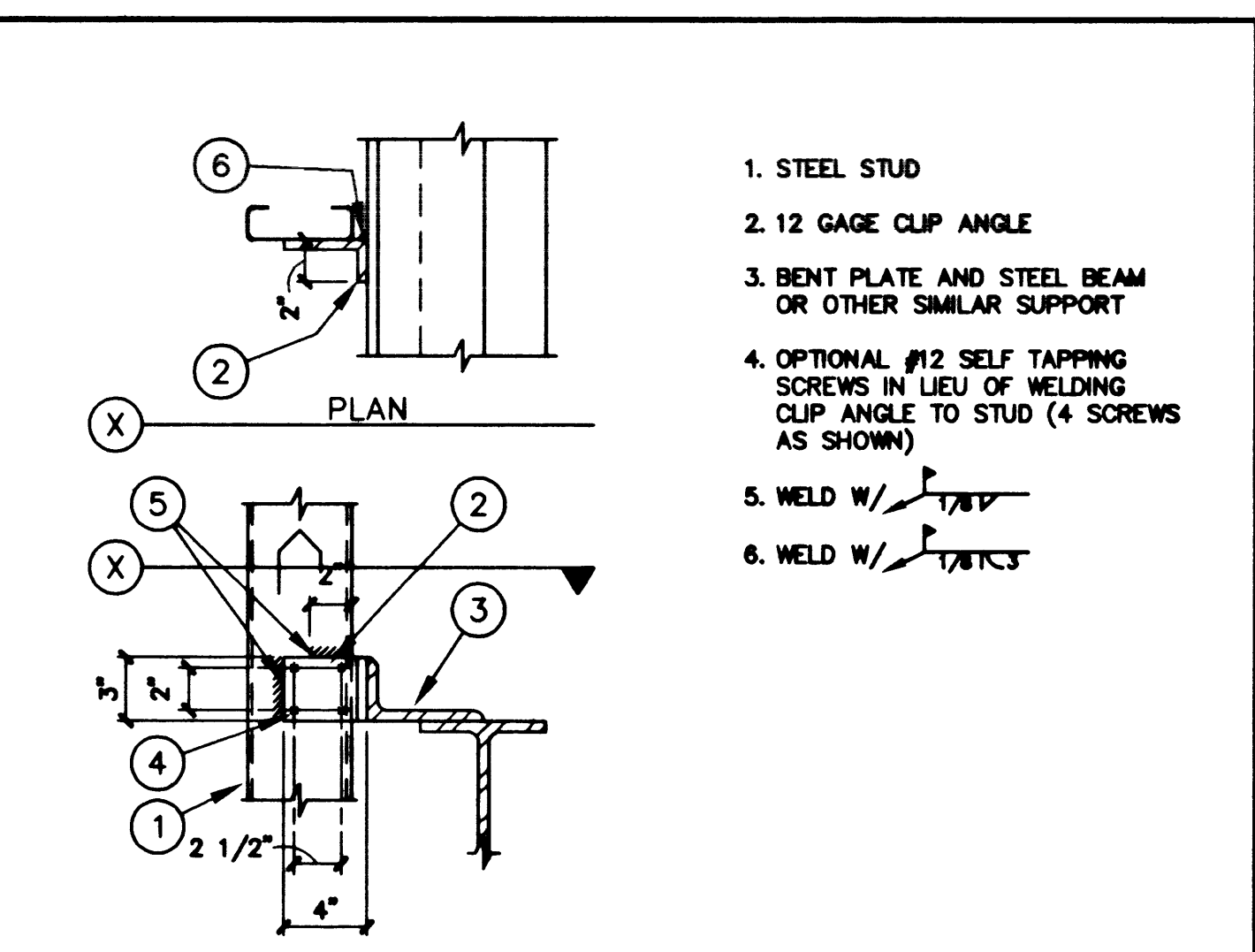
- STEEL BEAM
- MASONRY WALL
- 1/2" X 5" X 24" BEARING PLATE W/3 - 3/4" ANCHORS AT 8" O.C.
- INTERSECTION OF CENTERLINE OF BEAM AND FACE OF WALL
- 3/8" STIFFENERS EACH SIDE SIMILAR TO DETAIL 9/SB
- PROVIDE BEAM POCKET, BOND BEAM UNDER BEAM POCKET AND DRYPACK PER DETAIL 9/SB

3 PLAN - STEEL BEAM AT MASONRY WALL 33522023



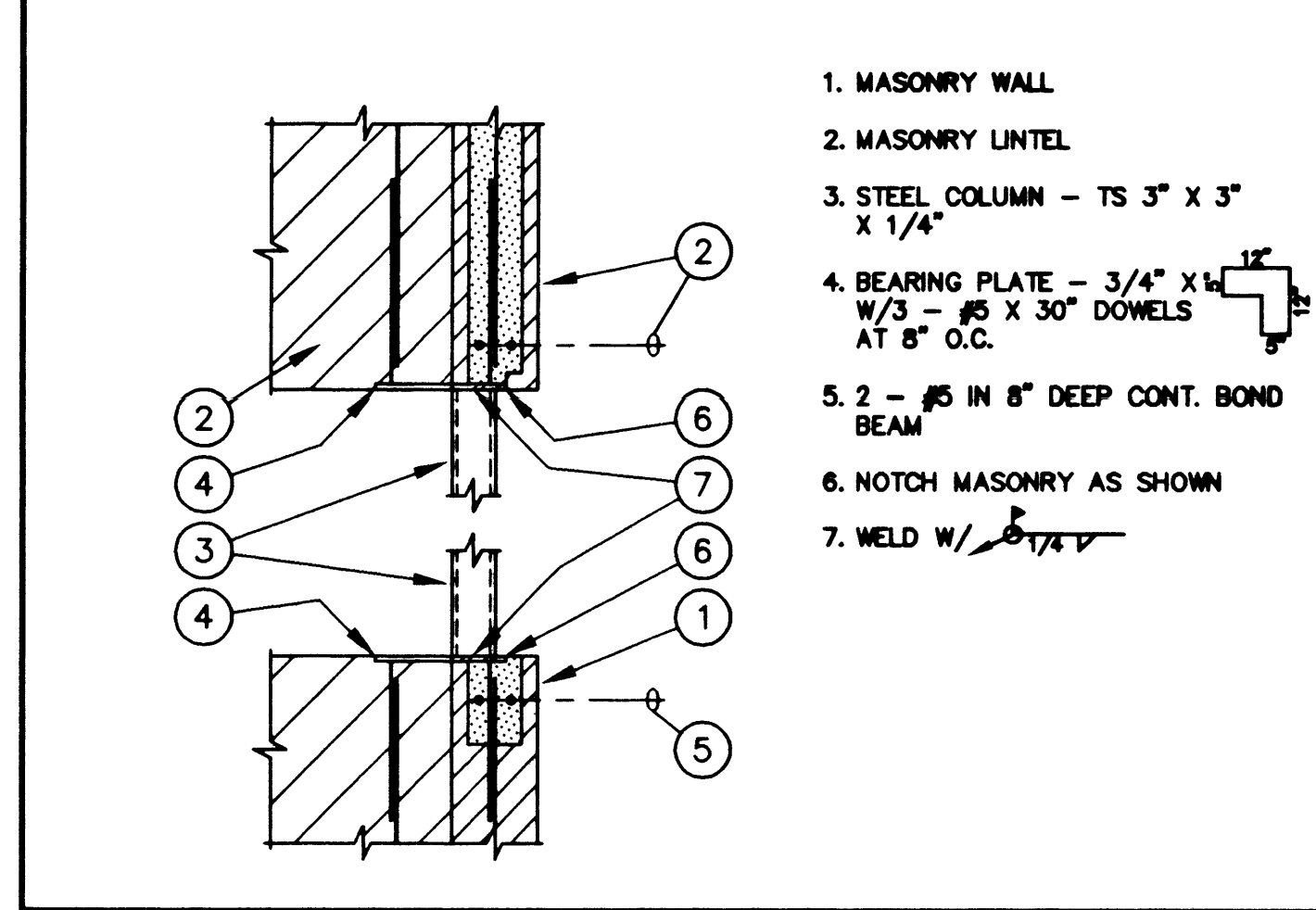
- STEEL JOIST
- SOFFIT FRAMING PER DETAIL 1/SB
- METAL DECK
- 4" X 18 GAGE STUD
- 3" X 3" X 3/16" CONT. LEDGER ANGLE
- 4" X 18 GAGE CONT. BLOCKING
- WELD W/ 3/8"
- WELD W/ 3/8"
- WELD W/ 3/8"

4 ROOF FRAMING AT ARCH'L SOFFIT 33522024



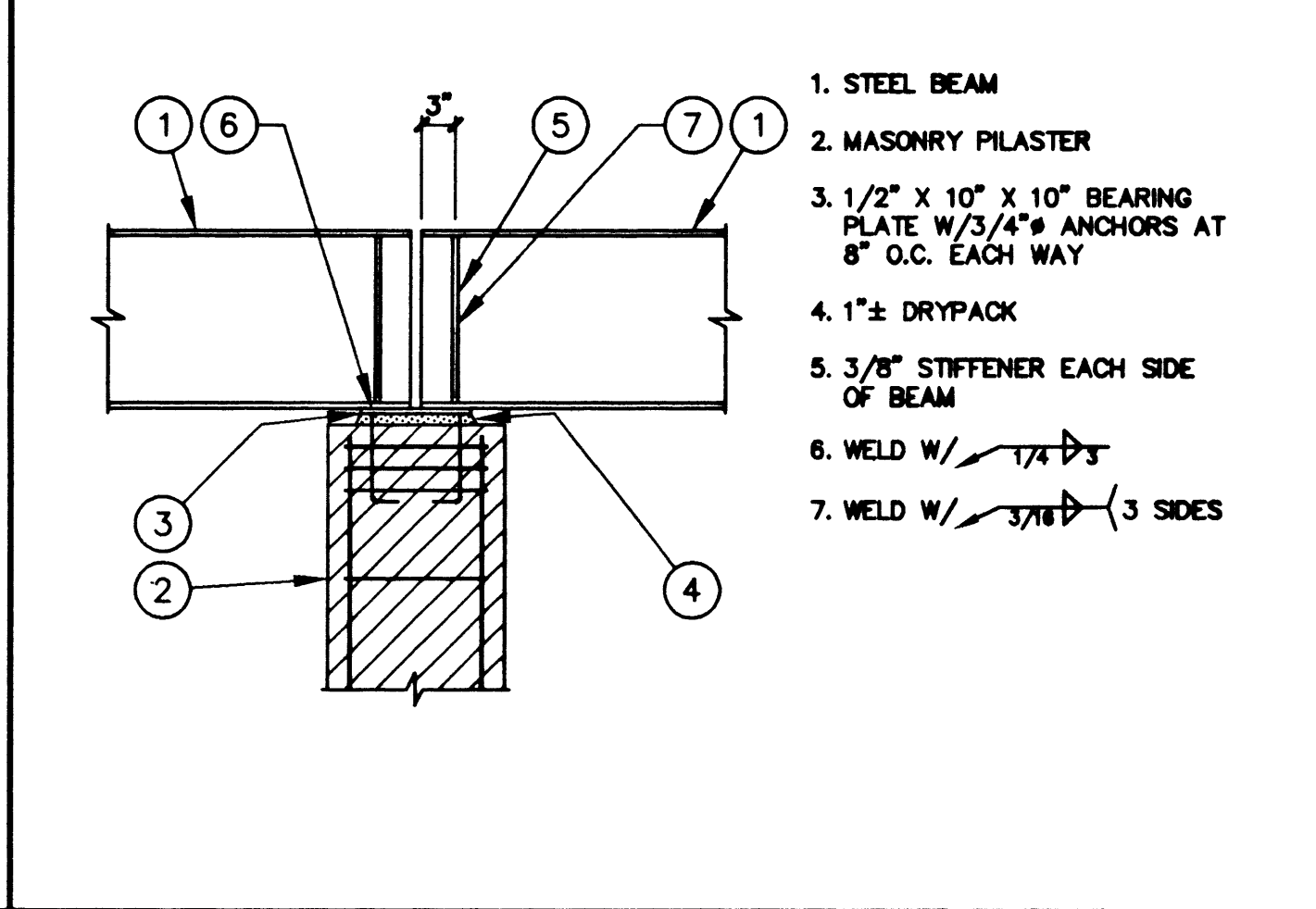
- STEEL STUD
- 12 GAGE CLIP ANGLE
- BENT PLATE AND STEEL BEAM OR OTHER SIMILAR SUPPORT
- OPTIONAL #12 SELF TAPPING SCREWS IN LIEU OF WELDING CLIP ANGLE TO STUD (4 SCREWS AS SHOWN)
- WELD W/ 3/8"
- WELD W/ 3/8"

5 TYPICAL CLIP ANGLE CONNECTION 33522025



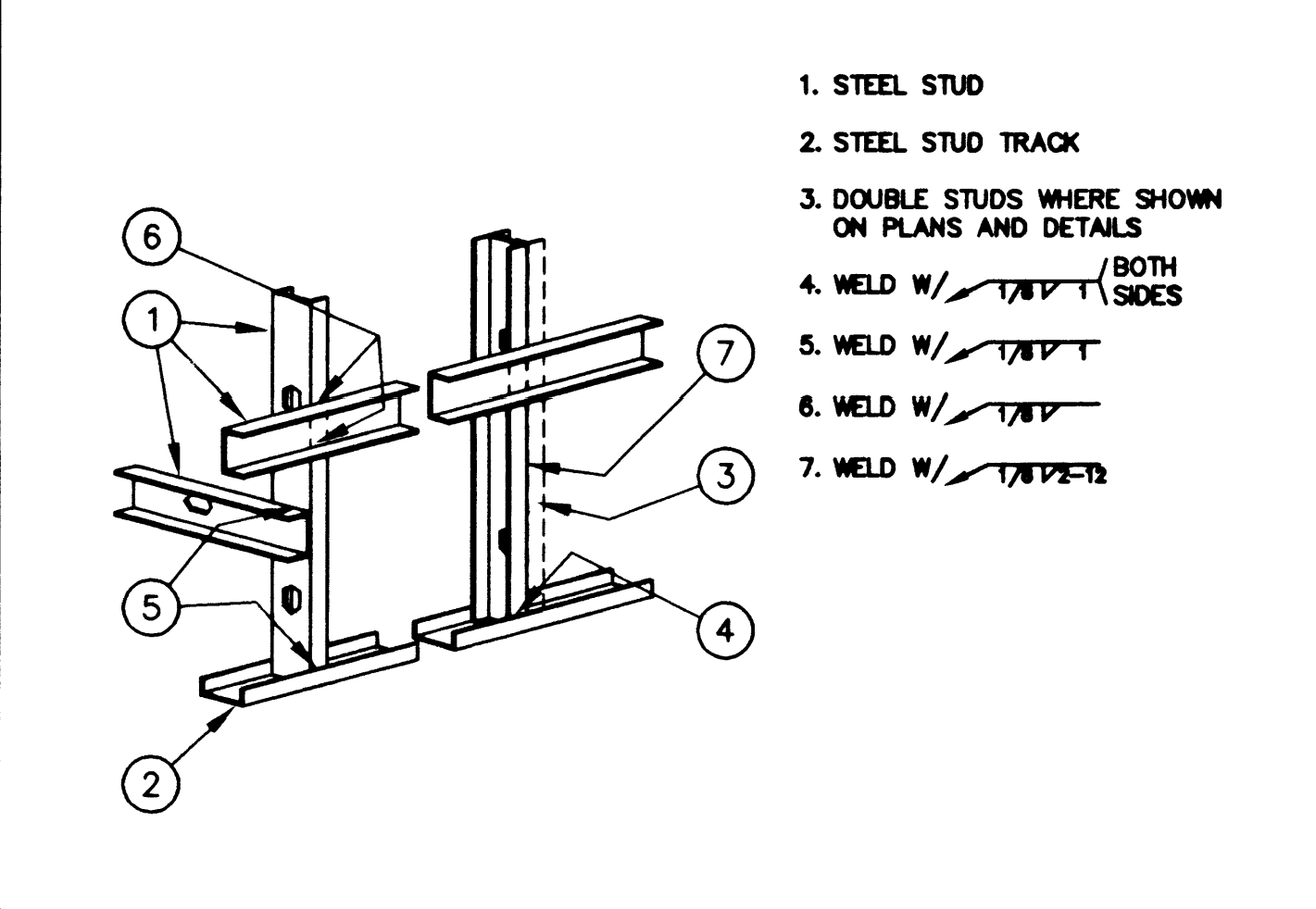
- MASONRY WALL
- MASONRY LINTEL
- STEEL COLUMN - TS 3" X 3" X 1/4"
- BEARING PLATE - 3/4" X 4" W/3 - #2 X 30" DOWELS AT 8" O.C.
- 2 - #5 IN 8" DEEP CONT. BOND BEAM
- NOTCH MASONRY AS SHOWN
- WELD W/ 3/8"

6 MASONRY LINTEL AT STEEL COLUMN 33522026



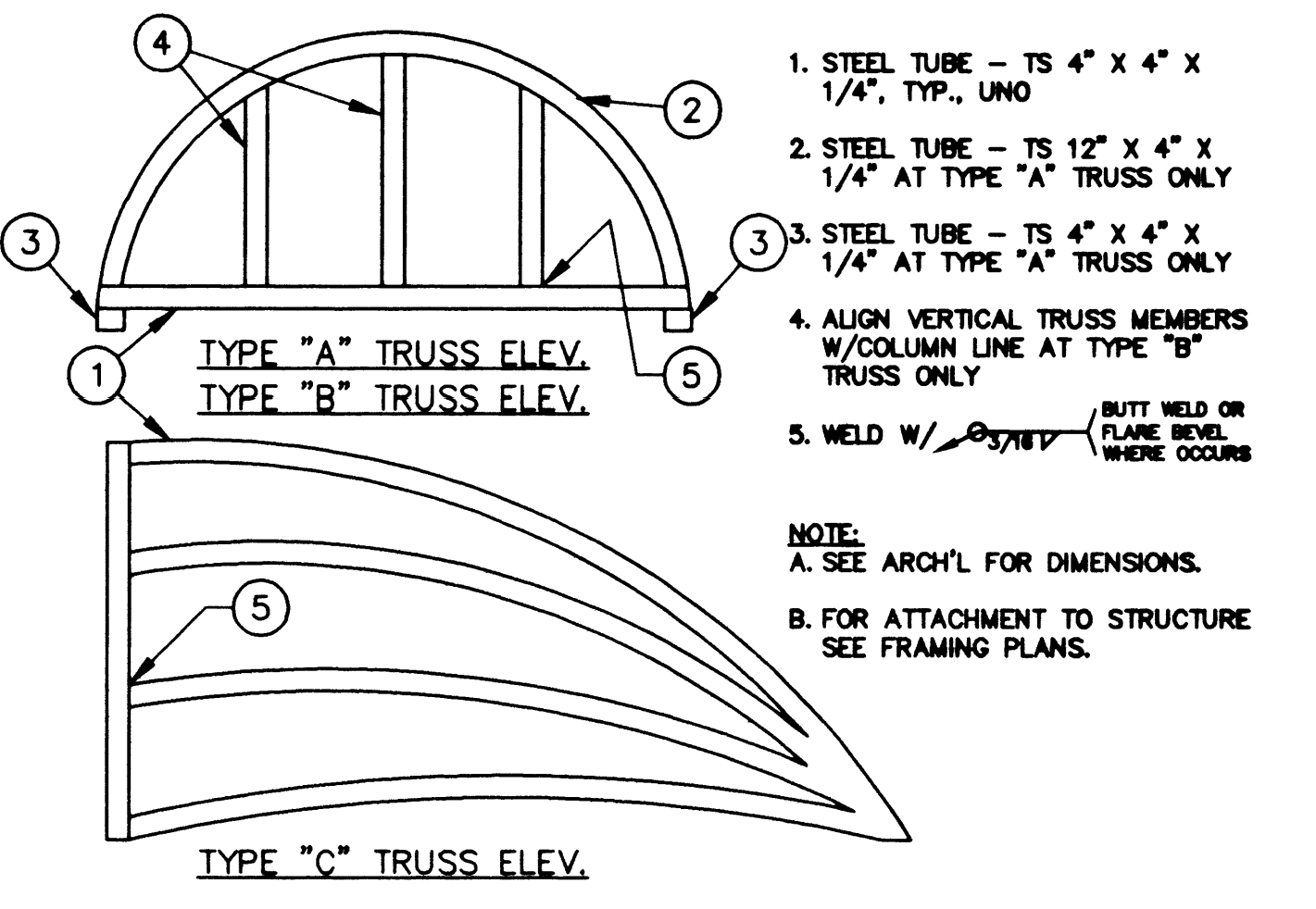
- STEEL BEAM
- MASONRY PILASTER
- 1/2" X 10" X 10" WELD PLATE W/3/4" ANCHORS AT 8" O.C. EACH WAY
- 1"± DRYPACK
- 3/8" STIFFENER EACH SIDE OF BEAM
- WELD W/ 3/8"
- WELD W/ 3/8" (3 SIDES)

7 STEEL BEAMS AT MASONRY PILASTER 33522027



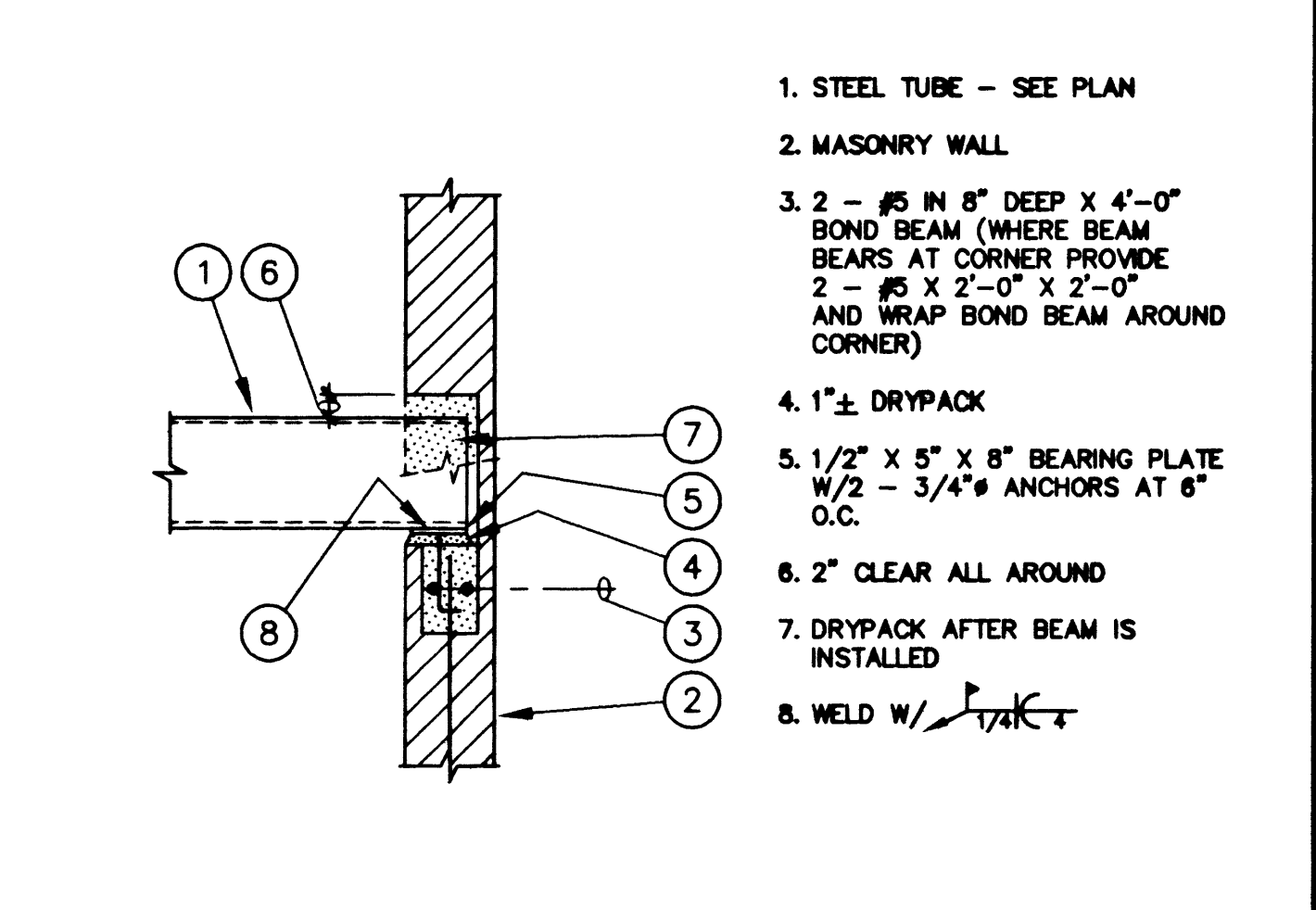
- STEEL STUD
- STEEL TUBE TRACK
- DOUBLE STUDS WHERE SHOWN ON PLANS AND DETAILS
- WELD W/ 3/8" BOTH SIDES
- WELD W/ 3/8"
- WELD W/ 3/8"
- WELD W/ 3/8"

8 TYPICAL STEEL STUD ATTACHMENT 33522028



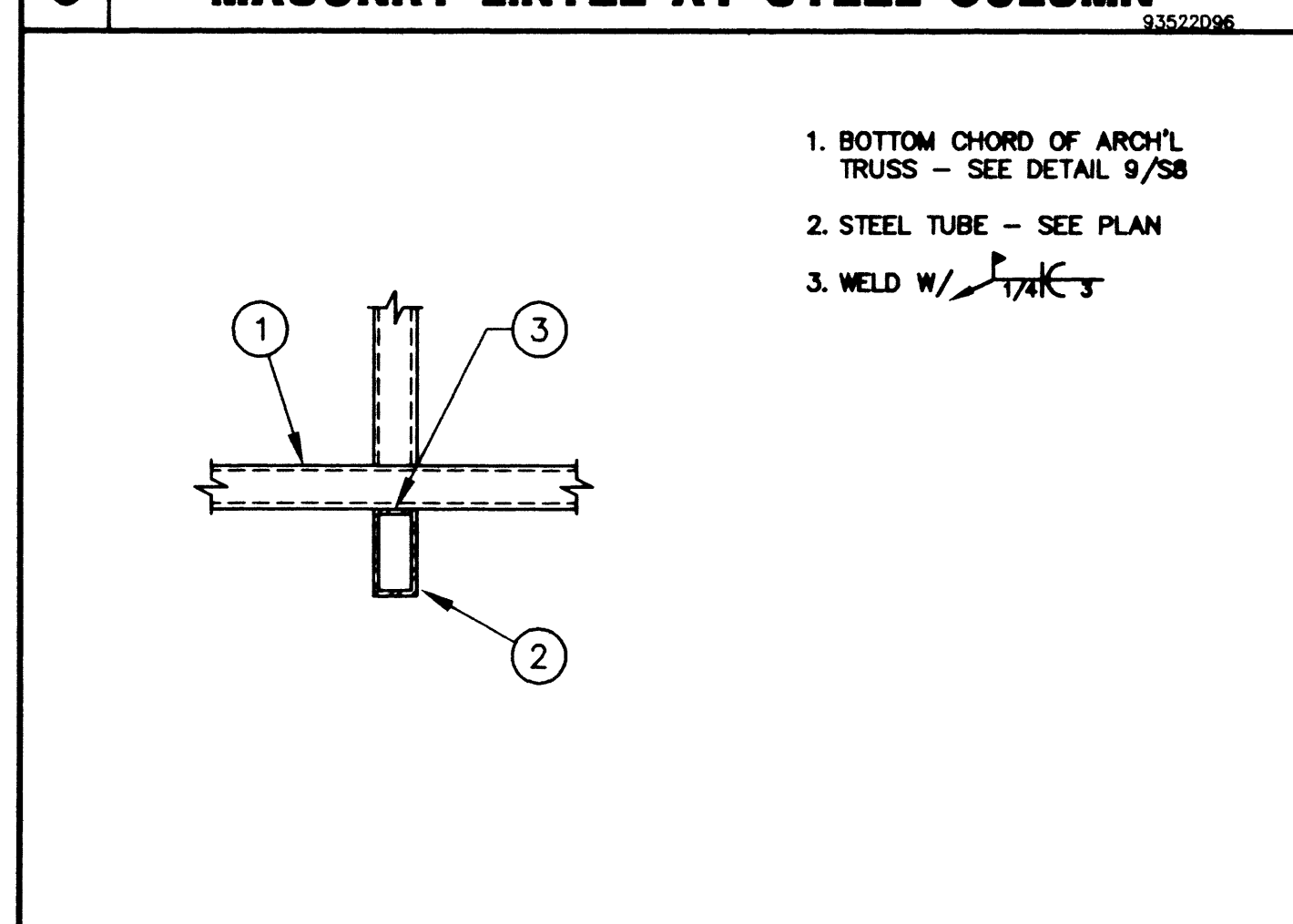
- STEEL TUBE - TS 4" X 4" X 1/4", TYP., UNO
 - STEEL TUBE - TS 12" X 4" X 1/4" AT TYPE "A" TRUSS ONLY
 - STEEL TUBE - TS 4" X 4" X 1/4" AT TYPE "A" TRUSS ONLY
 - ALIGN VERTICAL TRUSS MEMBERS W/COLUMN LINE AT TYPE "B" TRUSS ONLY
 - WELD W/ 3/8" (BUTT WELD OR FLAME WELD WHERE OCCURS)
- NOTE:
A. SEE ARCH'L FOR DIMENSIONS.
B. FOR ATTACHMENT TO STRUCTURE SEE FRAMING PLANS.

9 ARCHITECTURAL TRUSS ELEVATIONS 33522029



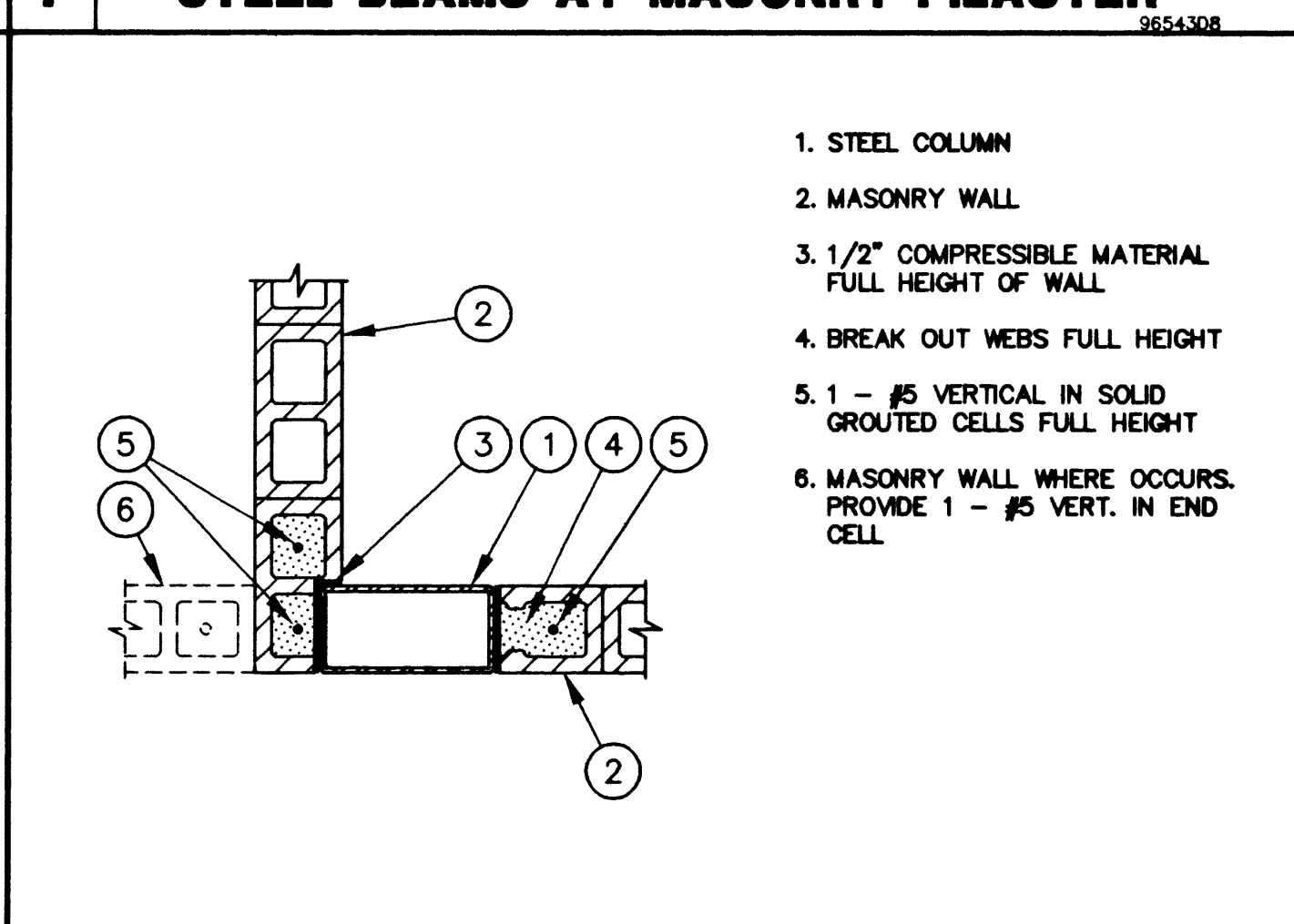
- STEEL TUBE - SEE PLAN
- MASONRY WALL
- 2 - #5 IN 8" DEEP X 4'-0" BOND BEAM (WHERE BEAM BEARS AT CORNER PROVIDE 2 - #5 X 2'-0" X 2'-0" AND WELD BOND BEAM AROUND CORNER)
- 1"± DRYPACK
- 1/2" X 5" X 8" BEARING PLATE W/2 - 3/4" ANCHORS AT 8" O.C.
- 2" CLEAR ALL AROUND
- DRYPACK AFTER BEAM IS INSTALLED
- WELD W/ 3/8"

10 STEEL TUBES AT MASONRY WALL 33522030



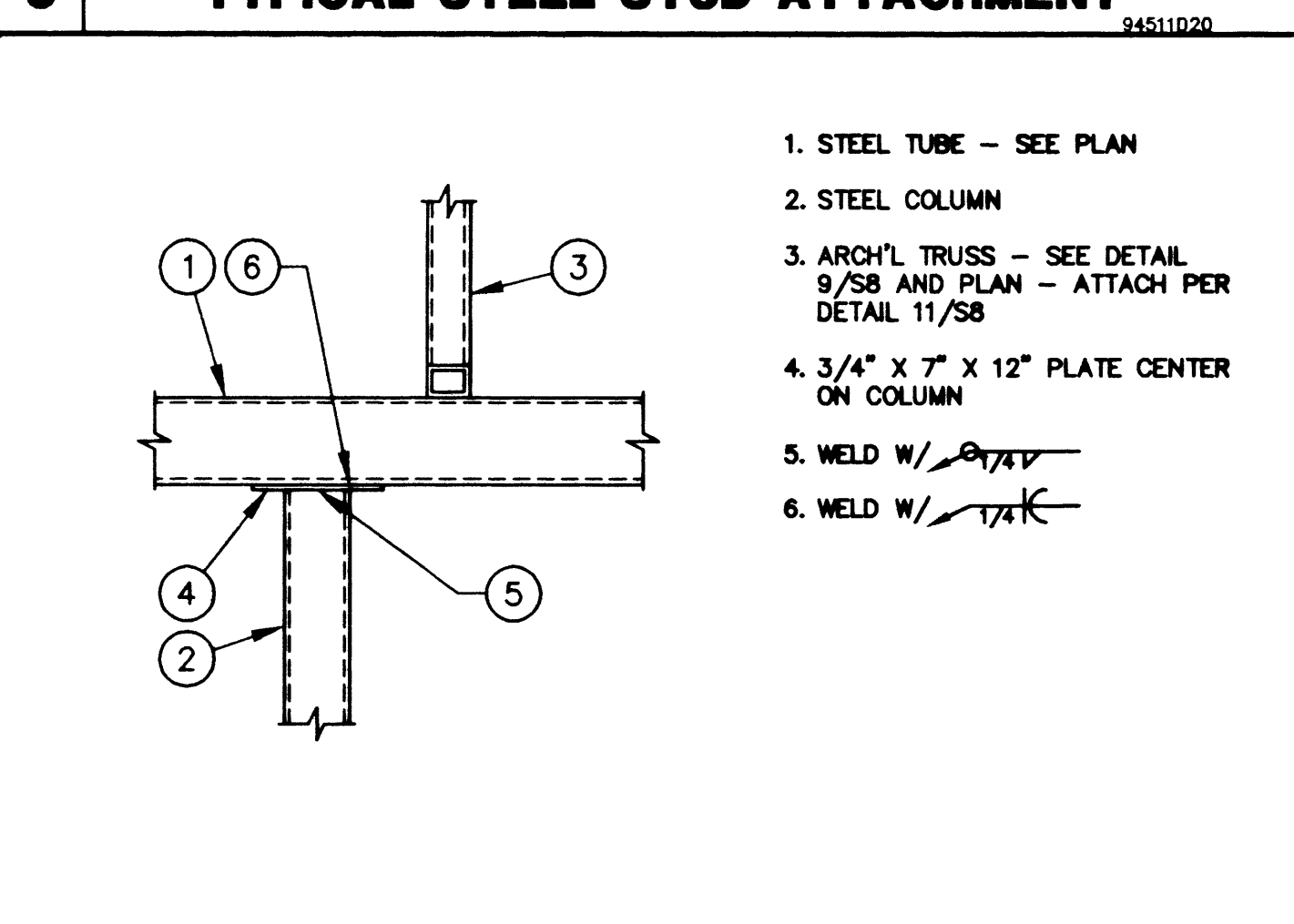
- BOTTOM CHORD OF ARCH'L TRUSS - SEE DETAIL 9/SB
- STEEL TUBE - SEE PLAN
- WELD W/ 3/8"

11 ARCH'L TRUSS AT STEEL TUBE 33522031



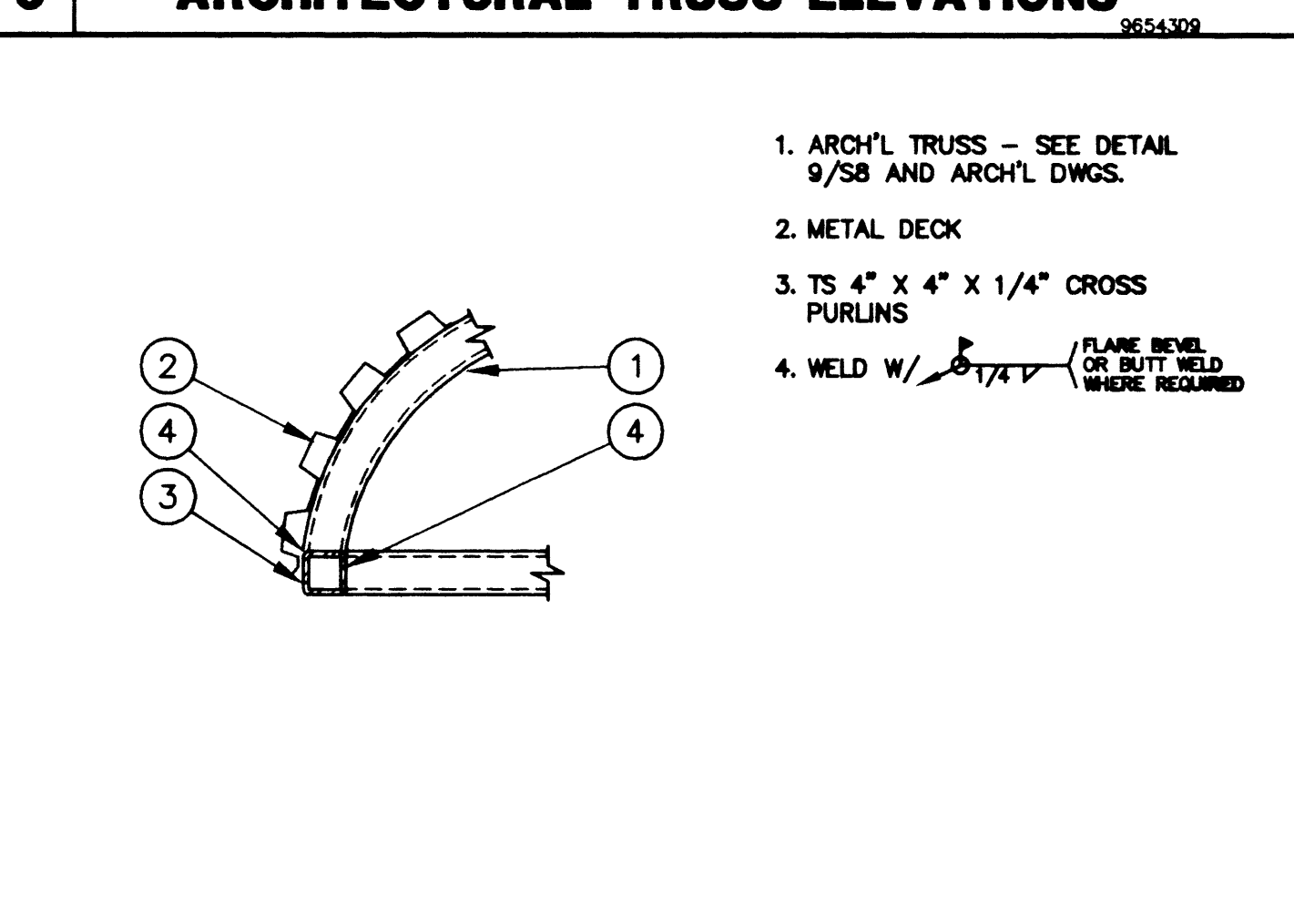
- STEEL COLUMN
- MASONRY WALL
- 1/2" COMPRESSIBLE MATERIAL FULL HEIGHT OF WALL
- BREAK OUT WEBS FULL HEIGHT
- 1 - #5 VERTICAL IN SOLID GROUTED CELLS FULL HEIGHT
- MASONRY WALL WHERE OCCURS PROVIDE 1 - #5 VERT. IN END CELL

12 COLUMN AT MASONRY WALL 33522032



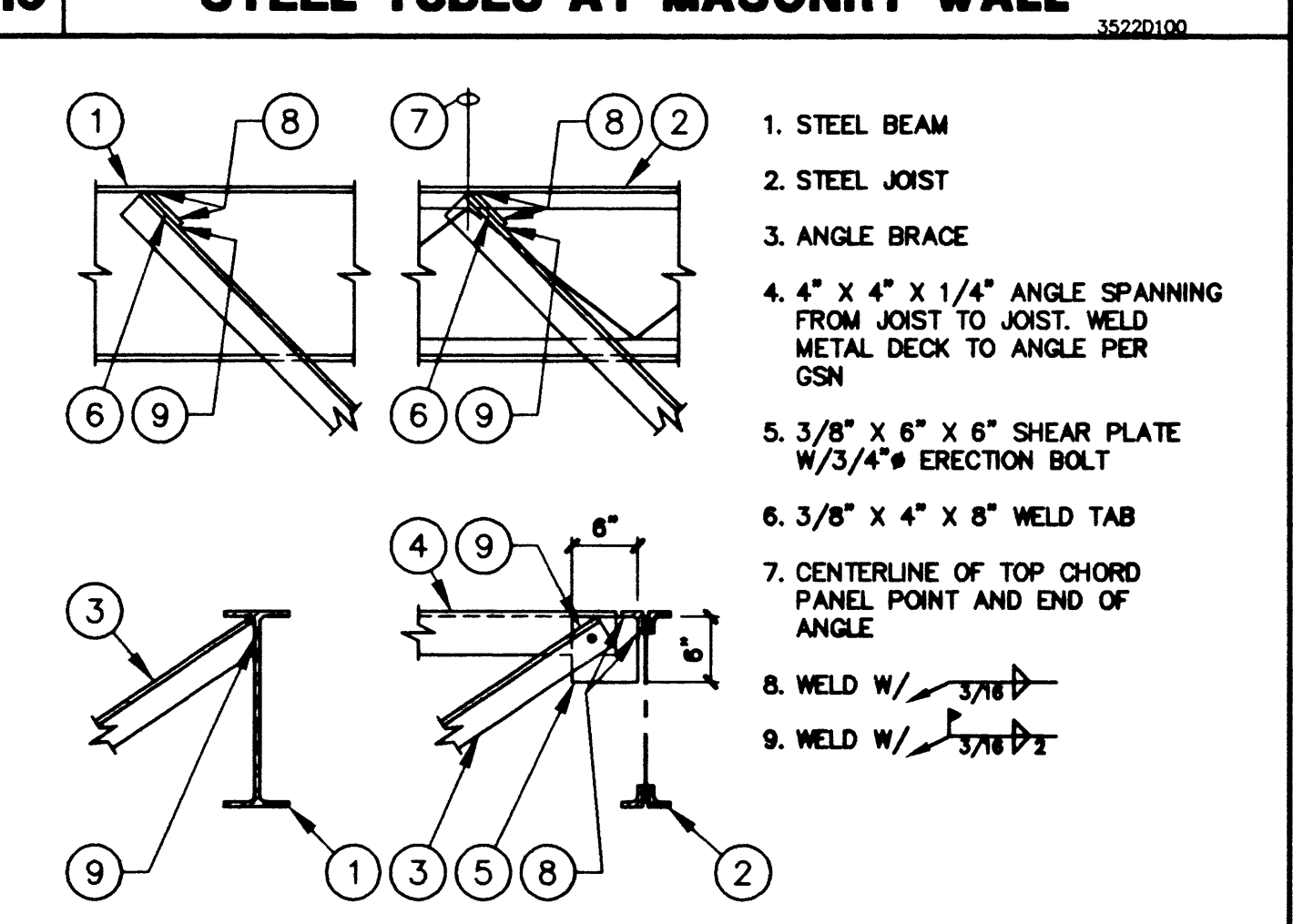
- STEEL TUBE - SEE PLAN
- STEEL COLUMN
- ARCH'L TRUSS - SEE DETAIL 9/SB AND PLAN - ATTACH PER DETAIL 11/SB
- 3/4" X 7" X 12" PLATE CENTER ON COLUMN
- WELD W/ 3/8"
- WELD W/ 3/8"

13 STEEL TUBE AT STEEL COLUMN 33522033



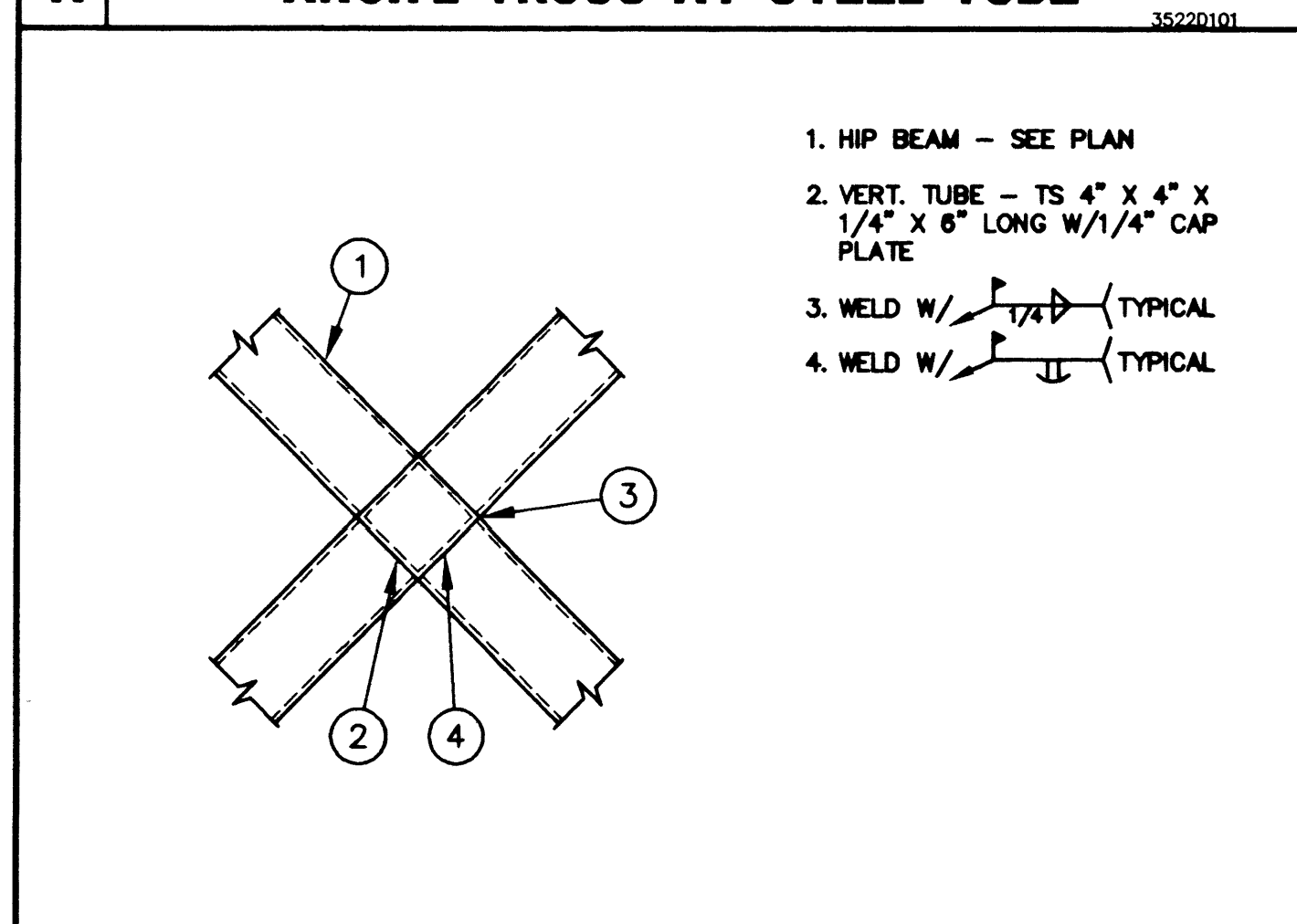
- ARCH'L TRUSS - SEE DETAIL 9/SB AND ARCH'L DWGS.
- METAL DECK
- TS 4" X 4" X 1/4" CROSS PURLINS
- WELD W/ 3/8" (FLAME WELD OR BUTT WELD WHERE REQUIRED)

14 ARCH'L TRUSS AT ROOF EDGE 33522034



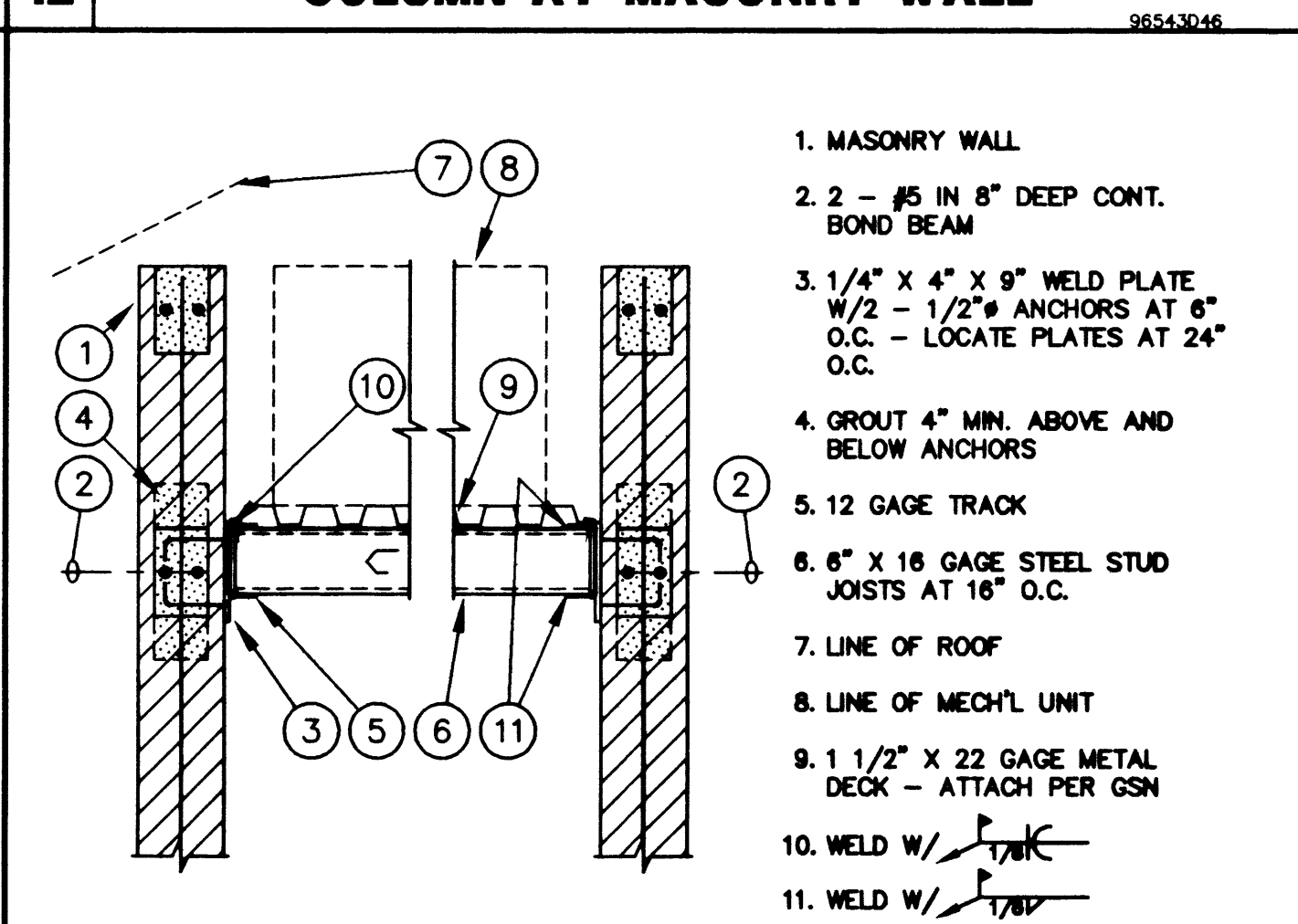
- TOP CHORD OF ARCH'L TRUSS
- BENT PIPE AND PLATE PER DETAIL 17/S7
- METAL DECK
- TS 4" X 4" X 1/4" BEAM
- 3" X 3" X 3/16" X 0'-3" LONG ANGLE EACH SIDE OF ARCH'D BEAM
- 1/2"± ERECTION BOLT
- 1/4" CAP PLATE
- CILING LINE - SEE ARCH'L
- 3/8" SHEAR PLATE
- 3/8" END PLATE
- WELD W/ 3/8"
- WELD W/ 3/8"
- WELD W/ 3/8" TYP

15 TYP. BRACE CONNECTION AT ROOF MEMBER 33522035



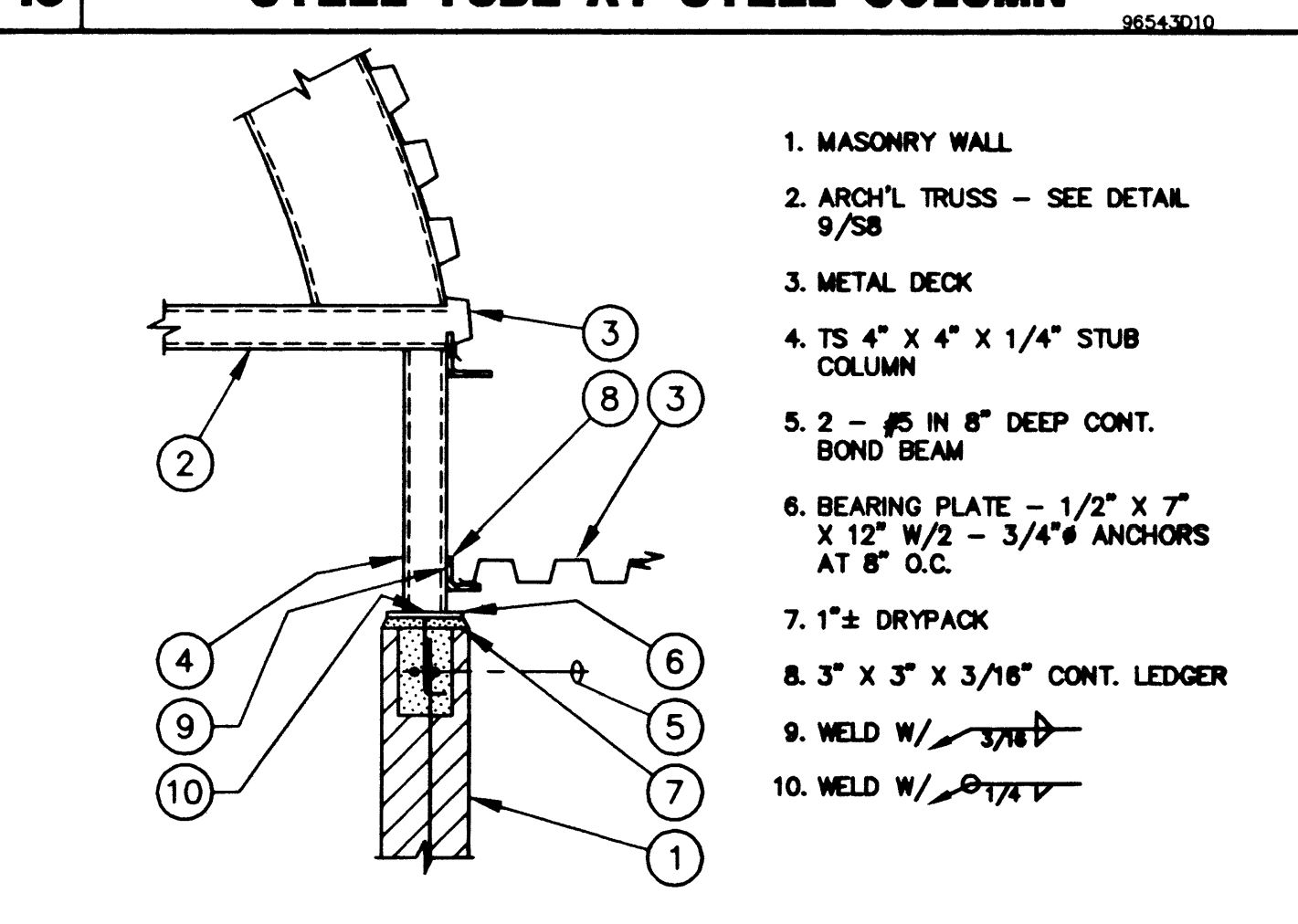
- HIP BEAM - SEE PLAN
- VERT. TUBE - TS 4" X 4" X 1/4" X 8" LONG W/1/4" CAP PLATE
- WELD W/ 3/8" TYPICAL
- WELD W/ 3/8" TYPICAL

16 PLAN - HIP BEAMS AT PEAK 33522036



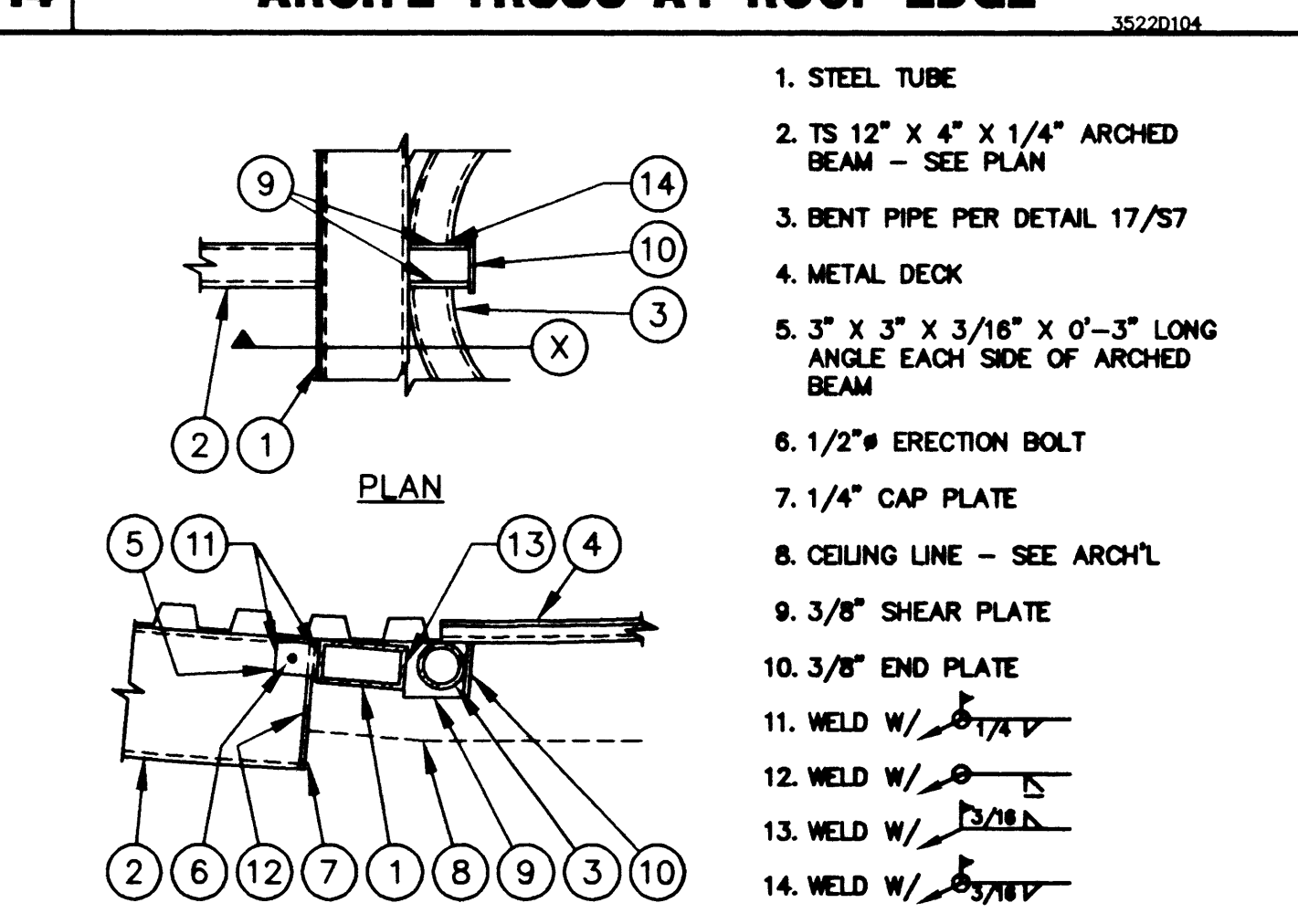
- MASONRY WALL
- 2 - #5 IN 8" DEEP CONT. BOND BEAM
- 1/4" X 4" X 9" WELD PLATE W/2 - 1/2" ANCHORS AT 8" O.C. LOCATE PLATES AT 24" O.C.
- GROUT 4" MIN. ABOVE AND BELOW ANCHORS
- 12 GAGE TRACK
- 6" X 16 GAGE STEEL STUD JOISTS AT 18" O.C.
- LINE OF ROOF
- LINE OF MECH'L UNIT
- 1 1/2" X 22 GAGE METAL DECK - ATTACH PER GSN
- WELD W/ 3/8"
- WELD W/ 3/8"

17 CROSS SECTION AT MECH'L PLATFORM 33522037



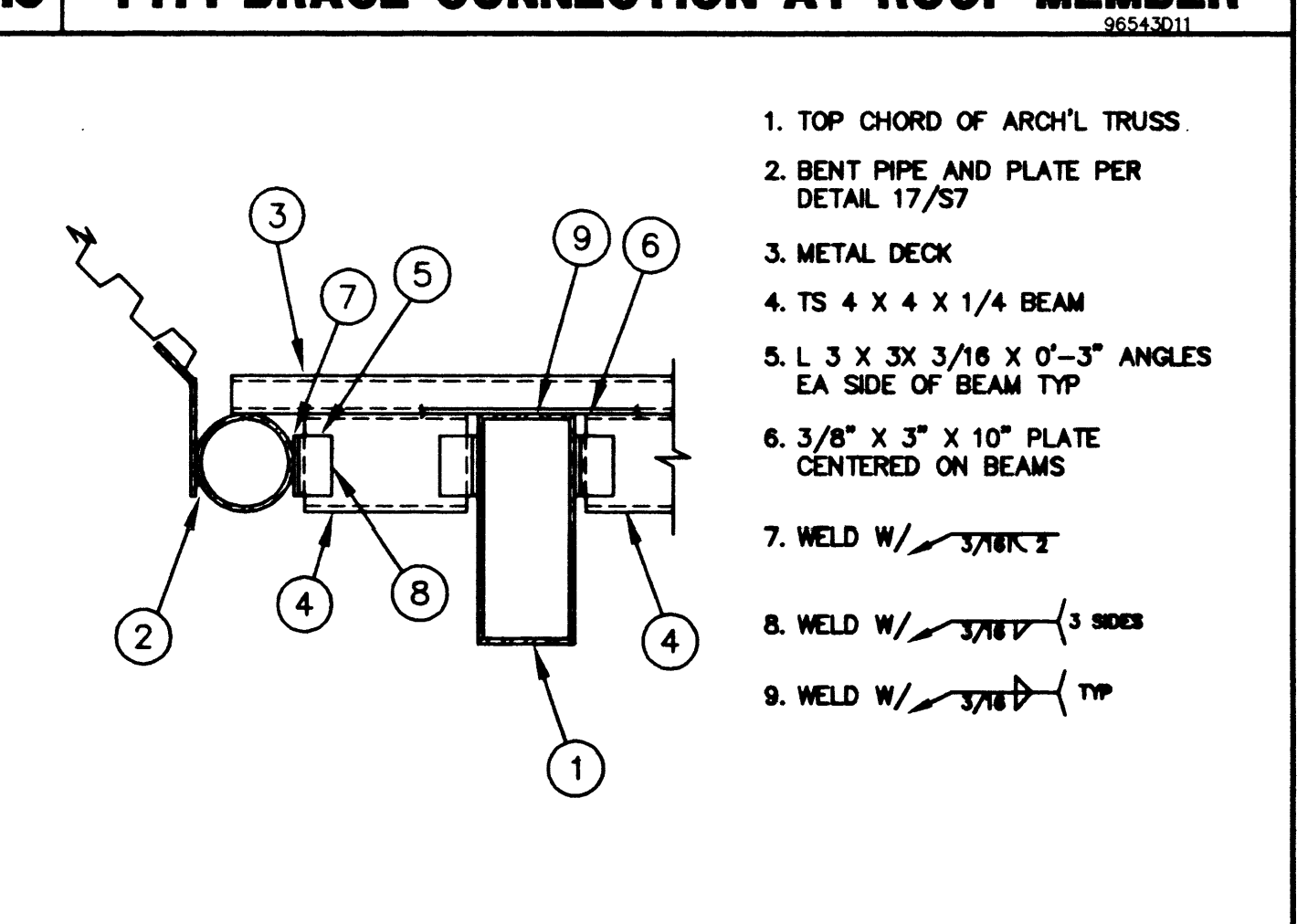
- MASONRY WALL
- ARCH'L TRUSS - SEE DETAIL 9/SB
- METAL DECK
- TS 4" X 4" X 1/4" STUB COLUMN
- 2 - #5 IN 8" DEEP CONT. BOND BEAM
- BEARING PLATE - 1/2" X 7" X 12" W/2 - 3/4" ANCHORS AT 8" O.C.
- 1"± DRYPACK
- 3" X 3" X 3/16" CONT. LEDGER
- WELD W/ 3/8"
- WELD W/ 3/8"

18 TRUSS TO MASONRY WALL 33522038



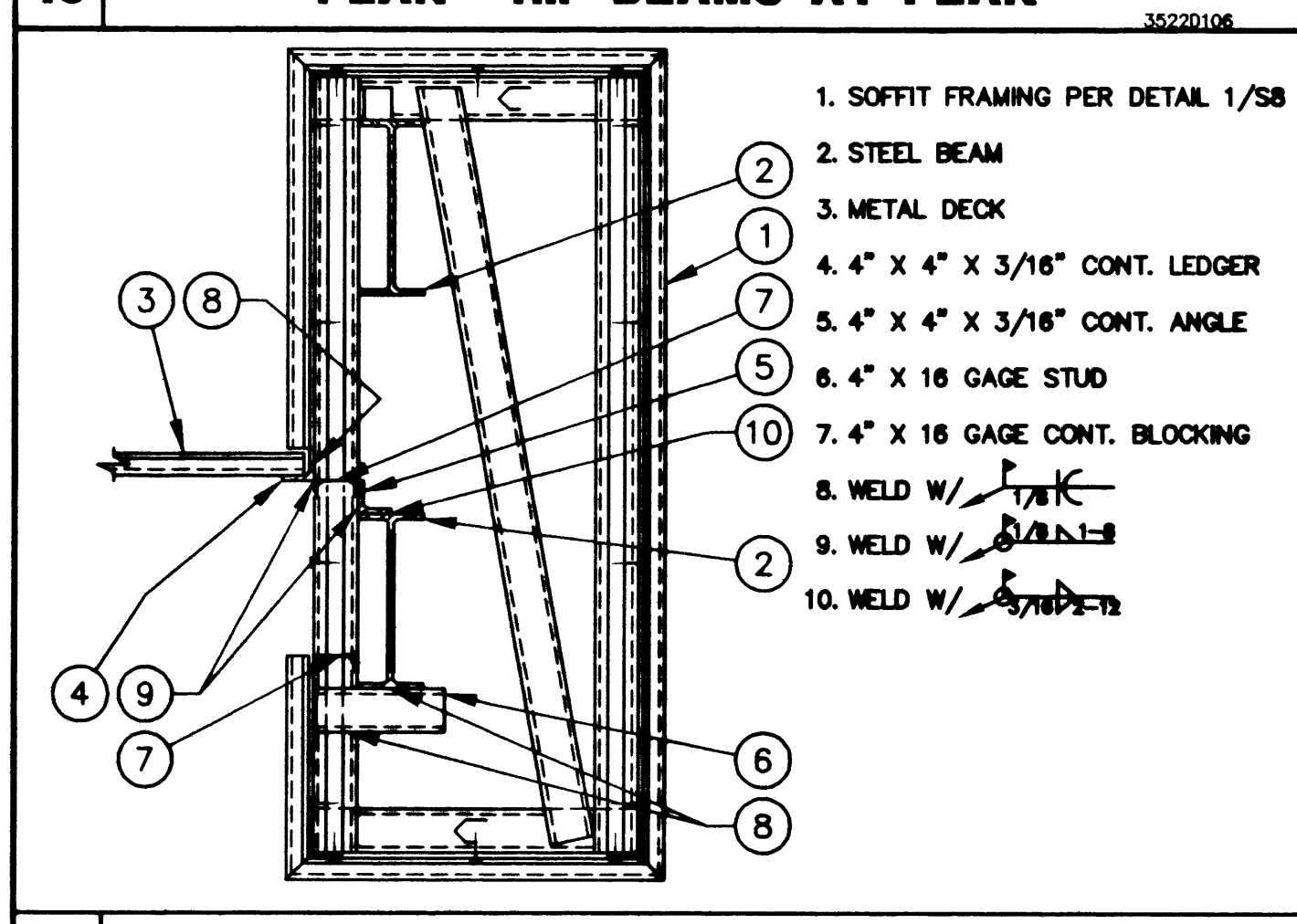
- STEEL TUBE
- TS 12" X 4" X 1/4" ARCH'D BEAM - SEE PLAN
- BENT PIPE PER DETAIL 17/S7
- METAL DECK
- 3" X 3" X 3/16" X 0'-3" LONG ANGLE EACH SIDE OF ARCH'D BEAM
- 1/2"± ERECTION BOLT
- 1/4" CAP PLATE
- CILING LINE - SEE ARCH'L
- 3/8" SHEAR PLATE
- 3/8" END PLATE
- WELD W/ 3/8"
- WELD W/ 3/8"
- WELD W/ 3/8"
- WELD W/ 3/8"

19 TUBE CONNECTION DETAIL 33522039



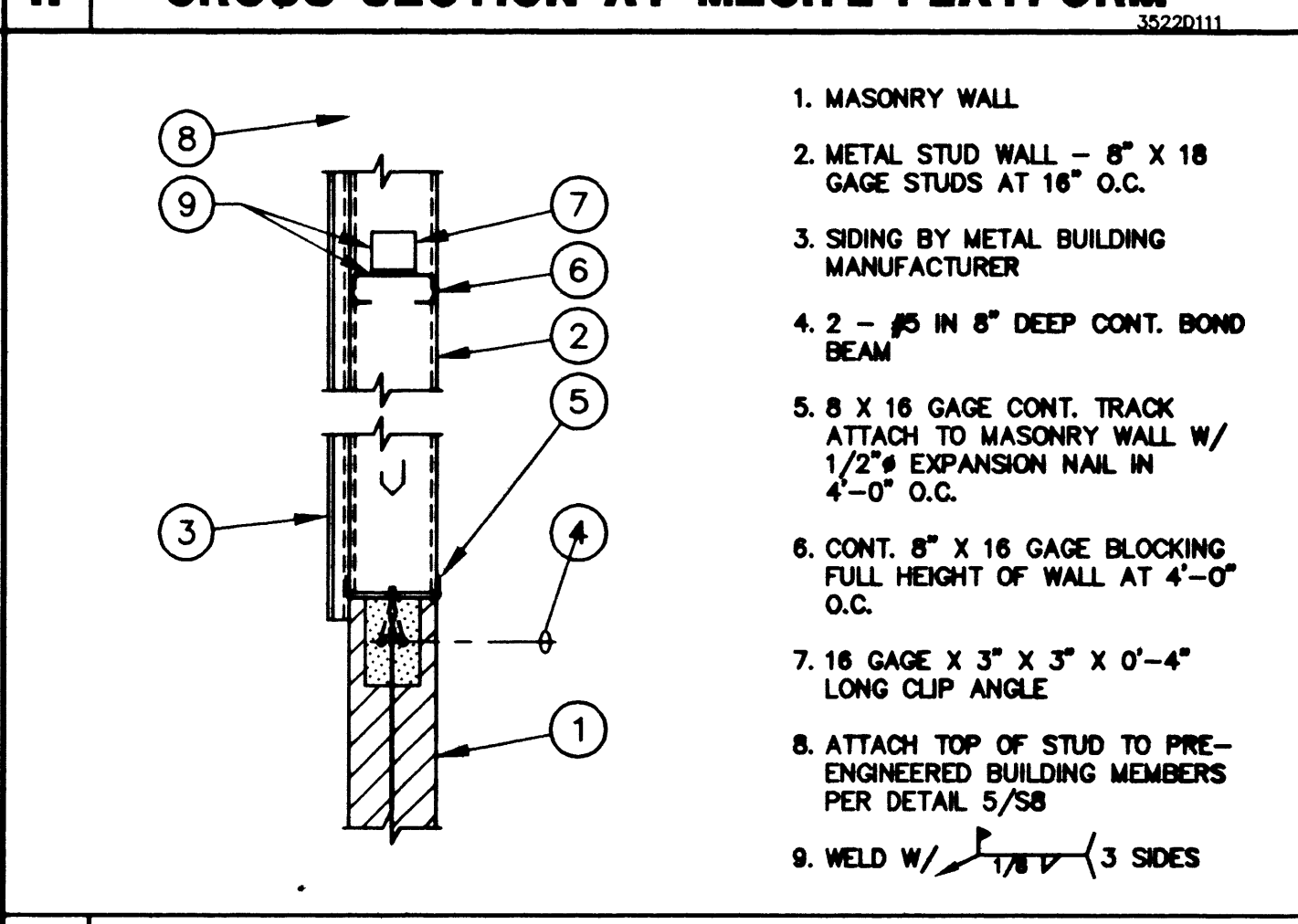
- BASE PLATE - 1" X 20" X 14"
- SEE PLAN AND SCHEDULE FOR FOOTING SIZE AND REINFORCING
- 3/4" ANCHOR BOLT - 6 TYP.
- STEEL COLUMN
- PLATE - 1/2" X 3" X 3"
- SEE DETAIL 8/S4 FOR INFO. NOT SHOWN
- FULL PENETRATION
- DOUBLE NUT
- WELD W/ 3/8"

20 STEEL BEAM MOMENT CONNECTION 33522040



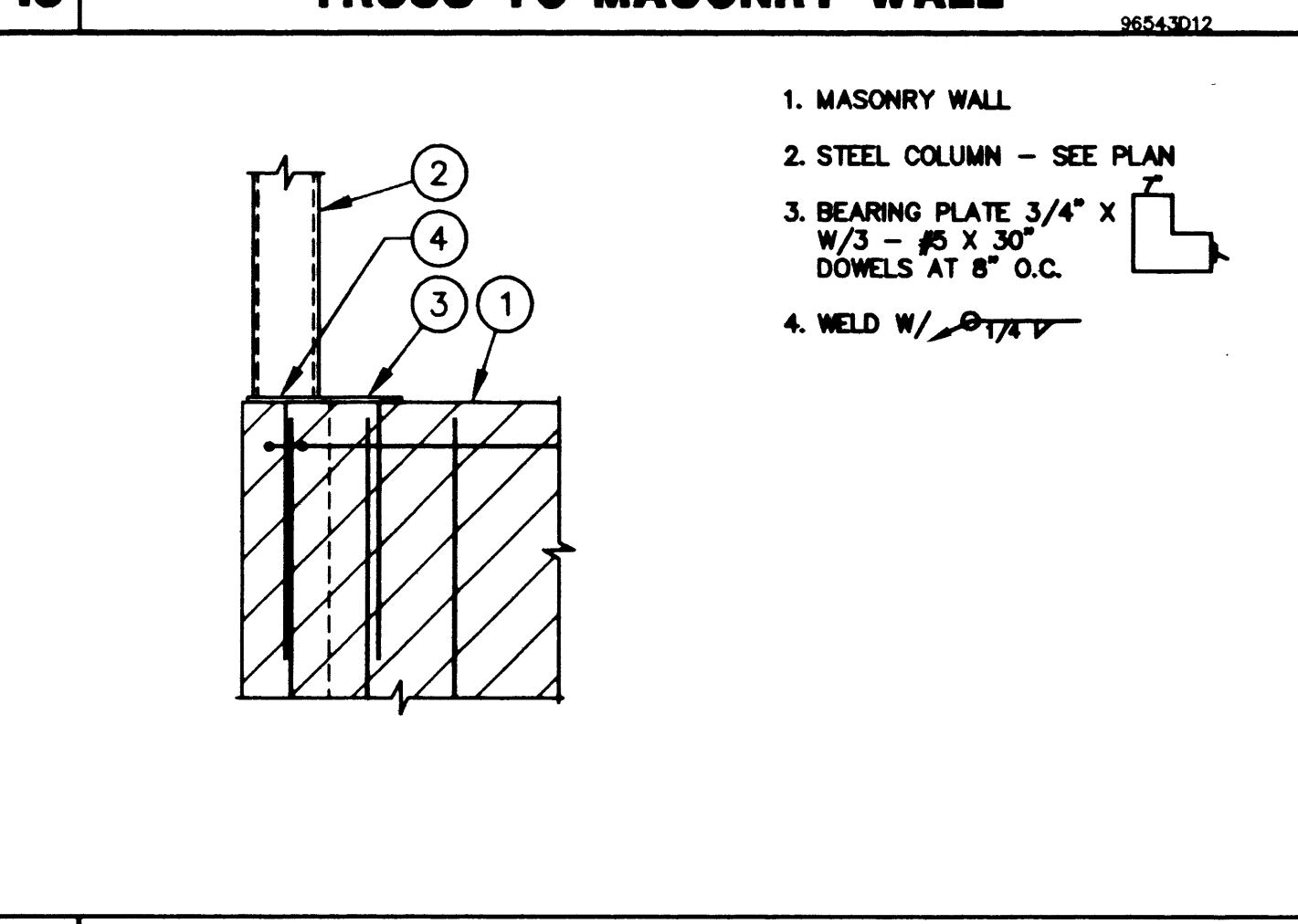
- SOFFIT FRAMING PER DETAIL 1/SB
- STEEL BEAM
- METAL DECK
- 4" X 4" X 3/16" CONT. LEDGER
- 4" X 4" X 3/16" CONT. ANGLE
- 4" X 18 GAGE STUD
- 4" X 18 GAGE CONT. BLOCKING
- WELD W/ 3/8"
- WELD W/ 3/8"
- WELD W/ 3/8"

21 ROOF FRAMING AT ARCH'L SOFFIT 33522041



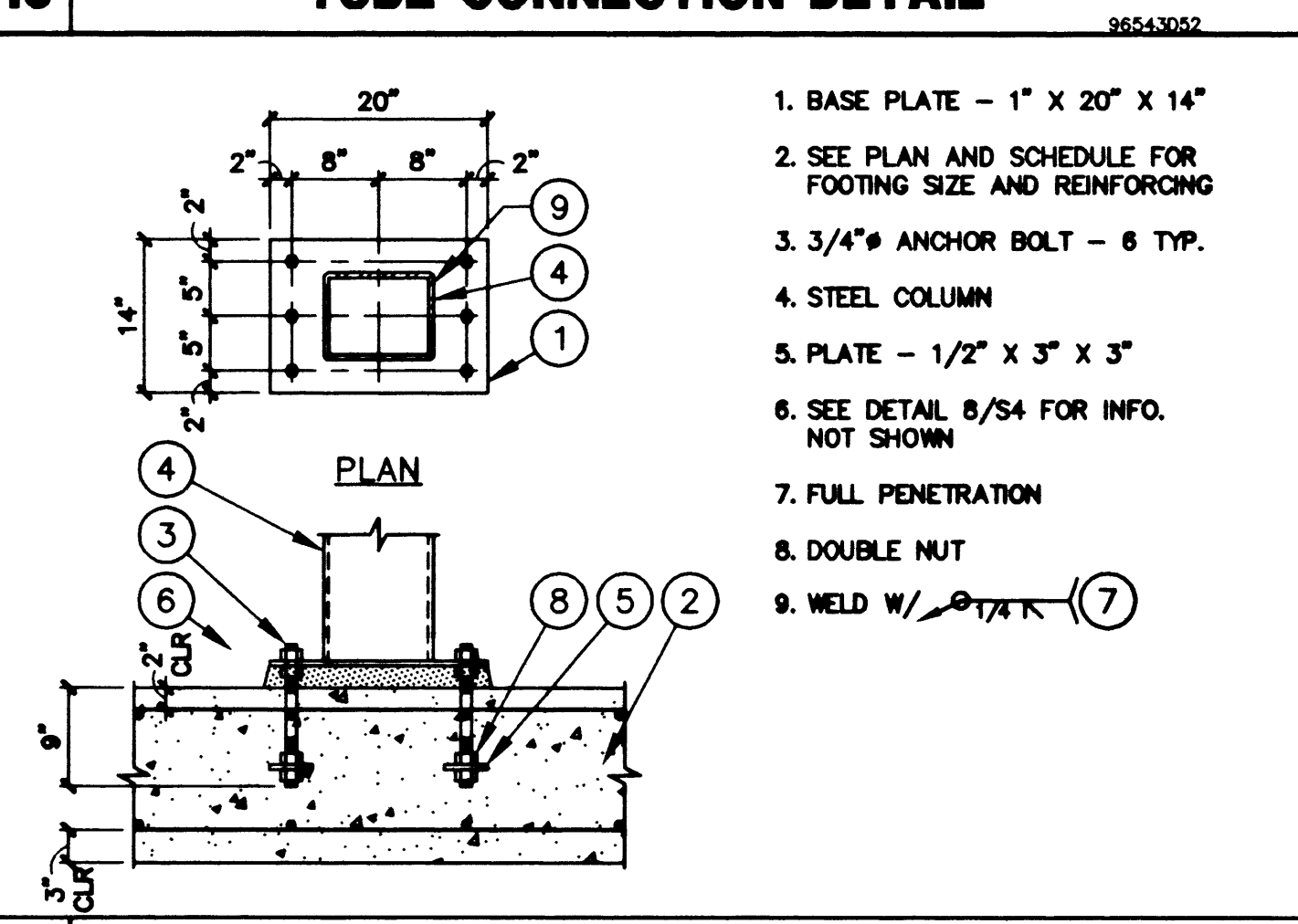
- MASONRY WALL
- METAL STUD WALL - 8" X 18 GAGE STUDS AT 18" O.C.
- SIDING BY METAL BUILDING MANUFACTURER
- 2 - #5 IN 8" DEEP CONT. BOND BEAM
- 8 X 16 GAGE CONT. TRACK ATTACH TO MASONRY WALL W/ 1/2" EXPANSION NAIL IN 4'-0" O.C.
- CONT. 8" X 16 GAGE BLOCKING FULL HEIGHT OF WALL AT 4'-0" O.C.
- 7.8 GAGE X 3" X 3" X 0'-4" LONG CLIP ANGLE
- ATTACH TOP OF STUD TO PRE-ENGINEERED BUILDING MEMBERS PER DETAIL 5/SB
- WELD W/ 3/8" (3 SIDES)

22 STUD WALL AT METAL BUILDING 33522042



- MASONRY WALL
- STEEL COLUMN - SEE PLAN
- BEARING PLATE 3/4" X 7" X 12" W/2 - 3/4" ANCHORS AT 8" O.C.
- WELD W/ 3/8"

23 STEEL COLUMN AT MASONRY WALL 33522043



- BASE PLATE - 1" X 20" X 14"
- SEE PLAN AND SCHEDULE FOR FOOTING SIZE AND REINFORCING
- 3/4" ANCHOR BOLT - 6 TYP.
- STEEL COLUMN
- PLATE - 1/2" X 3" X 3"
- SEE DETAIL 8/S4 FOR INFO. NOT SHOWN
- FULL PENETRATION
- DOUBLE NUT
- WELD W/ 3/8"

24 MOMENT CONNECTION AT COLUMN BASE 33522044

DATE: _____

DESCRIPTION: _____

REVISION: _____

WAYNE SCHREINER AIA
THOMAS M. SILVA AIA

1535 WEST DAREY BLVD.
LAS VEGAS, NV 89102
(702) 342-0077
FAX (702) 342-0077

FRAMING DETAILS

CITY OF LAS VEGAS DEPARTMENT OF PARK AND LEISURE ACTIVITIES
DURANGO RECREATION FACILITY
Verify all Dimensions and Conditions at the Site

Sheet Title: _____
Job No: 960901(96543)
Date: 20. FEB. 1998
Drawn By: TT
Check: SCG
Sheet: S8
Of 10 of 11

27099

65059

87 OF 118
65059

DRÖTTAR-FRINKO ASSOC.
Consulting Engineers Inc.
4170 S. DECATUR BLVD. SUITE D-9
LAS VEGAS, NEVADA 89103-5981
Telephone (702) 354-1861
Fax (702) 364-1807