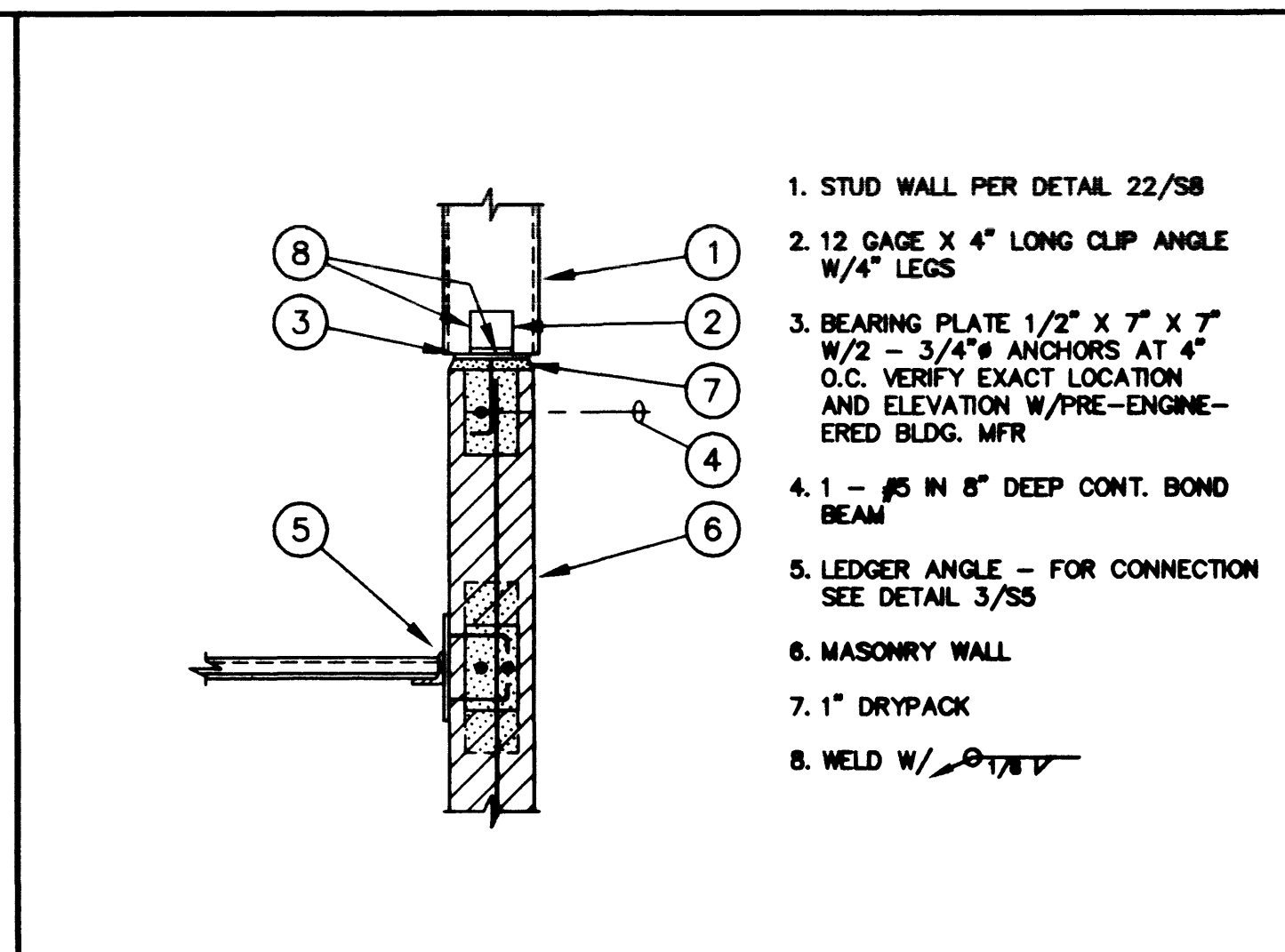


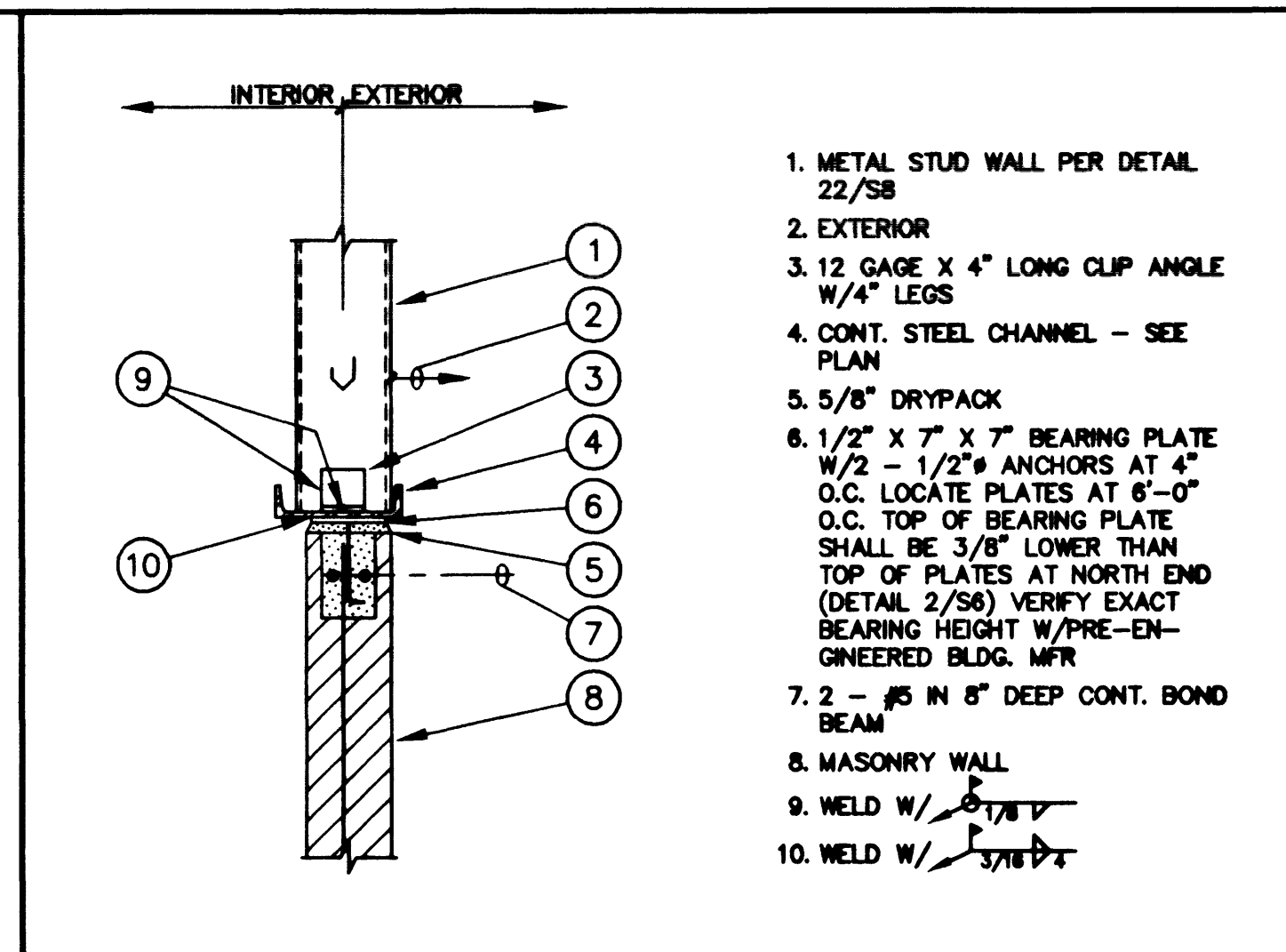
1. MASONRY WALL
2. STEEL BEAM
3. WALL BEYOND
- 3/8" STIFFENERS EACH SIDE
- 1/2" X 7" X 7" BEARING PLATE W/2 - 3/4" ANCHORS AT 4" O.C.
- 1" DRYPACK
- 2 - #5 X 24" X 24" CORNER BARS IN 8" DEEP X 4"-0" LONG BOND BEAM CENTERED AT CORNER
- GROUT POCKET SOLID WHERE REQUIRED FOR FIRE RATING - SEE ARCH'L
- WELD W/ 1/4" X 3/8" (3 SIDES)
- NOTE: ALIGN STEEL BEAM W/MASONRY WALL

**1 STEEL BEAM AT MASONRY WALL** 93522031



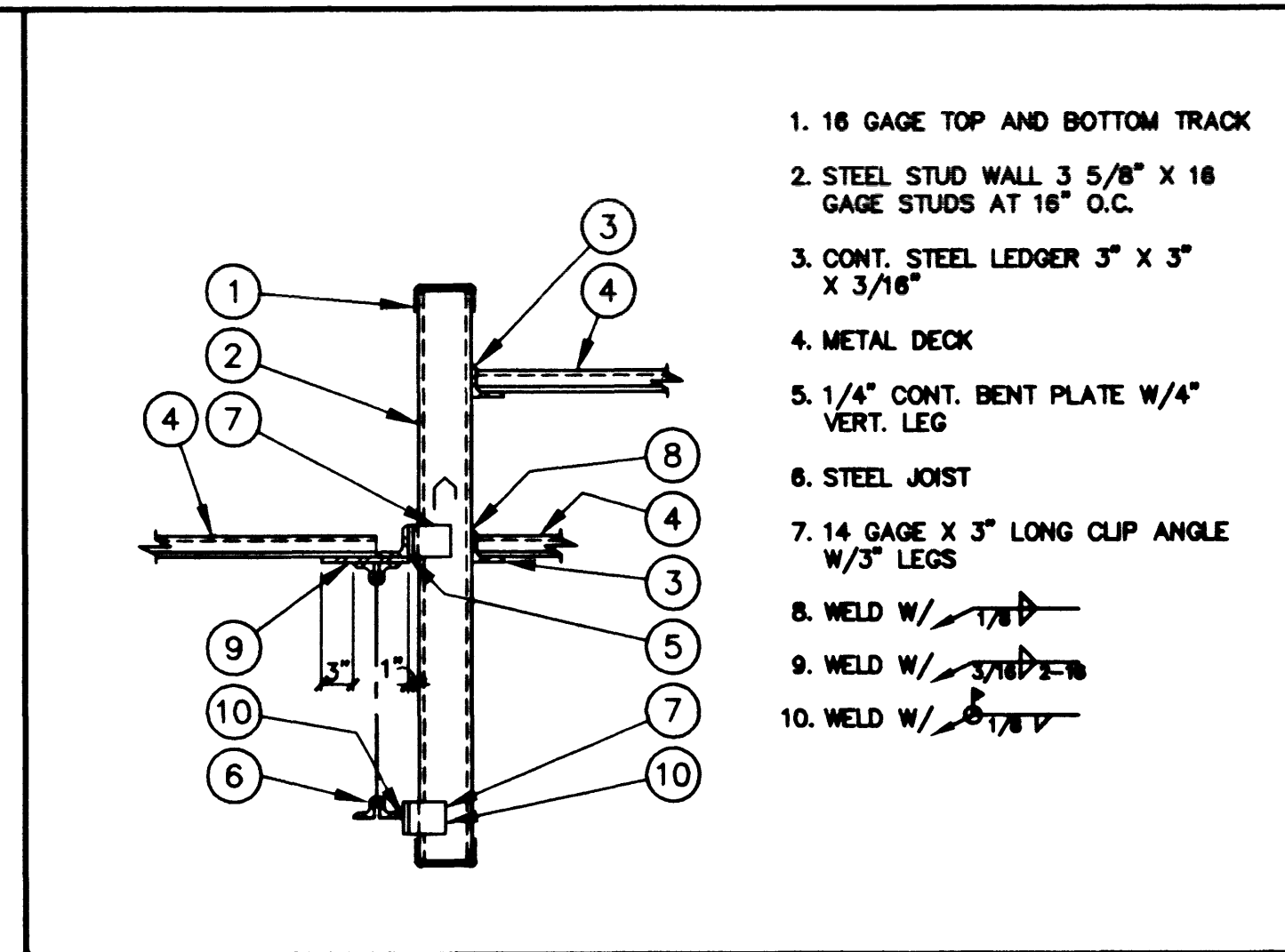
1. STUD WALL PER DETAIL 22/58
- 12 GAGE X 4" LONG CLIP ANGLE W/4" LEGS
- BEARING PLATE 1/2" X 7" X 7" W/2 - 3/4" ANCHORS AT 4" O.C. VERIFY EXACT LOCATION AND ELEVATION W/PRE-ENGINEERED BLDG. MFR
- 1 - #5 IN 8" DEEP CONT. BOND BEAM
- LEDGER ANGLE - FOR CONNECTION SEE DETAIL 3/55
- MASONRY WALL
- 1" DRYPACK
- WELD W/ 1/4" X 3/8"

**2 END WALL GIRTS AT MAS. WALL** 93522032



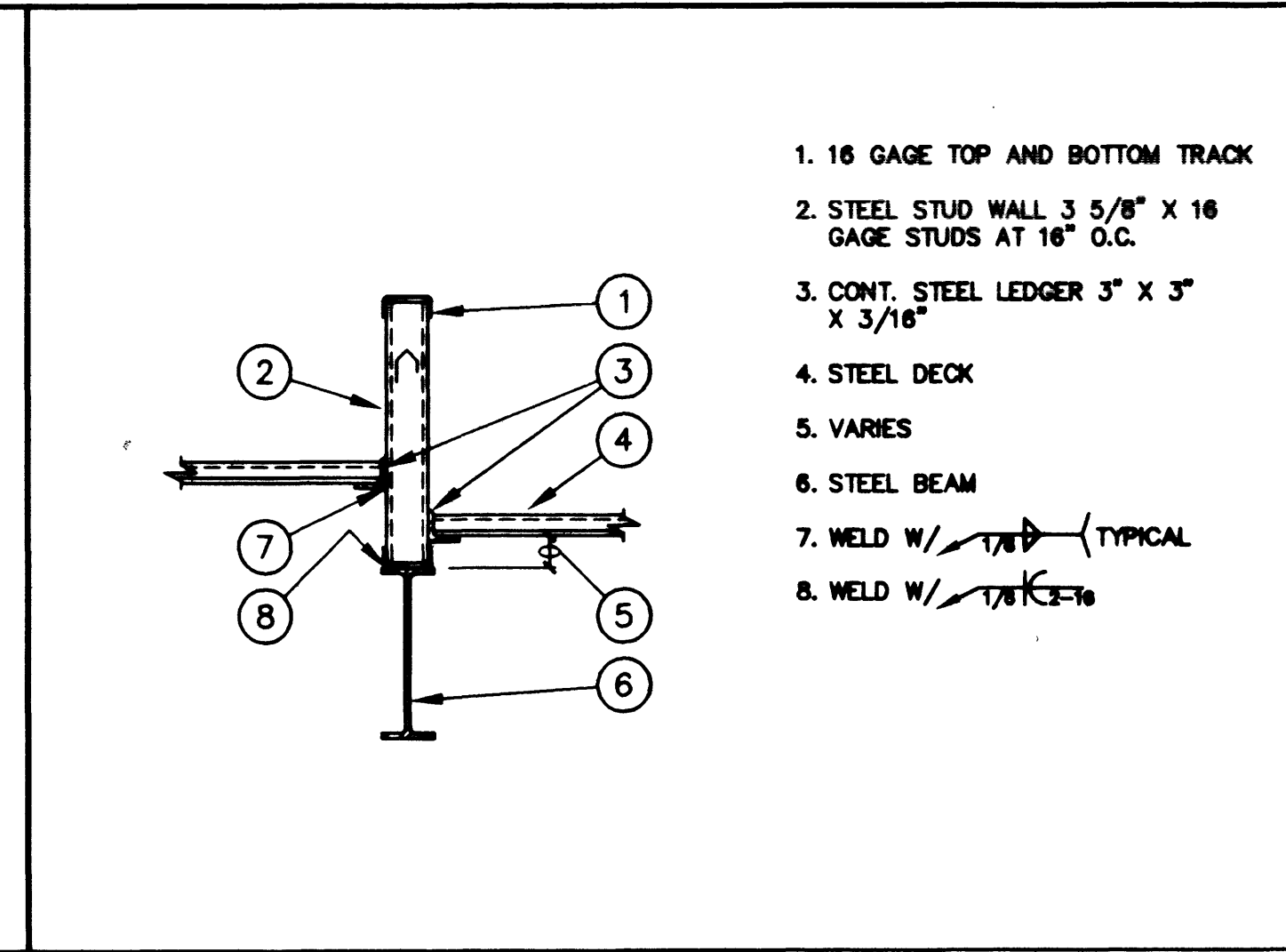
1. METAL STUD WALL PER DETAIL 22/58
- EXTERIOR
- 12 GAGE X 4" LONG CLIP ANGLE W/4" LEGS
- CONT. STEEL CHANNEL - SEE PLAN
- 1" DRYPACK
- 1/2" X 7" X 7" BEARING PLATE W/2 - 3/4" ANCHORS AT 4" O.C. LOCATE PLATES AT NORTH END (DETAIL 2/58) VERIFY EXACT BEARING HEIGHT W/PRE-ENGINEERED BLDG. MFR
- 1 - #5 IN 8" DEEP CONT. BOND BEAM
- MASONRY WALL
- WELD W/ 1/4" X 3/8"
- WELD W/ 1/4" X 3/8"

**3 END WALL GIRTS AT MASONRY WALL** 93522033



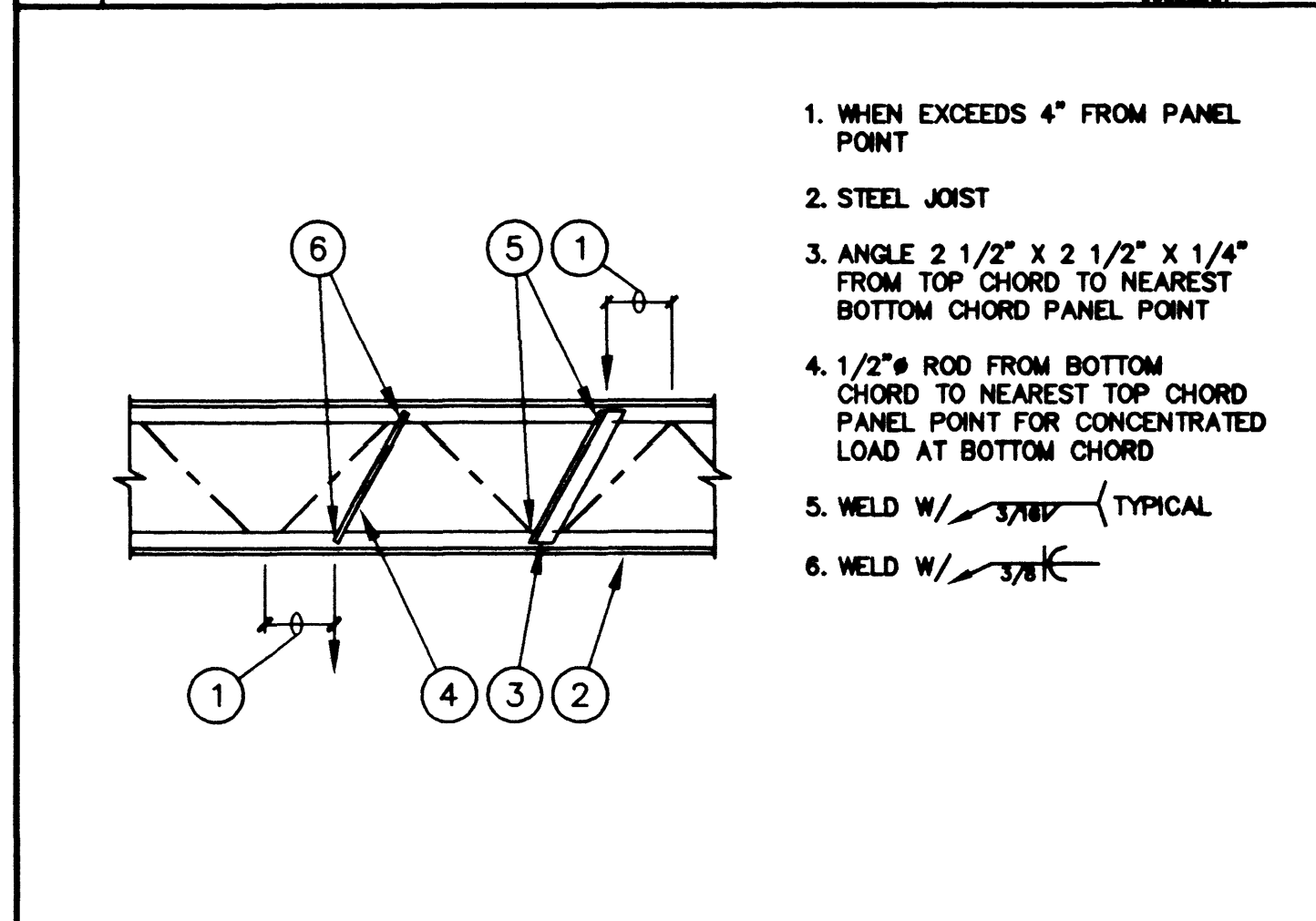
1. 16 GAGE TOP AND BOTTOM TRACK
- STEEL STUD WALL 3 5/8" X 16 GAGE STUDS AT 16" O.C.
- CONT. STEEL LEDGER 3" X 3" X 3/16"
- METAL DECK
- 1/4" CONT. BENT PLATE W/4" VERT. LEG
- STEEL JOIST
- 14 GAGE X 3" LONG CLIP ANGLE W/3" LEGS
- WELD W/ 1/4" X 3/8"
- WELD W/ 1/4" X 3/8"
- WELD W/ 1/4" X 3/8"

**4 METAL DECK AND STUD WALL AT STL. JOIST** 93522034



1. 16 GAGE TOP AND BOTTOM TRACK
- STEEL STUD WALL 3 5/8" X 16 GAGE STUDS AT 16" O.C.
- CONT. STEEL LEDGER 3" X 3" X 3/16"
- STEEL DECK
- VARIABLES
- STEEL BEAM
- WELD W/ 1/4" X 3/8"
- WELD W/ 1/4" X 3/8"

**5 STL. DECK AND STUD WALL AT STL. JOIST** 93522035



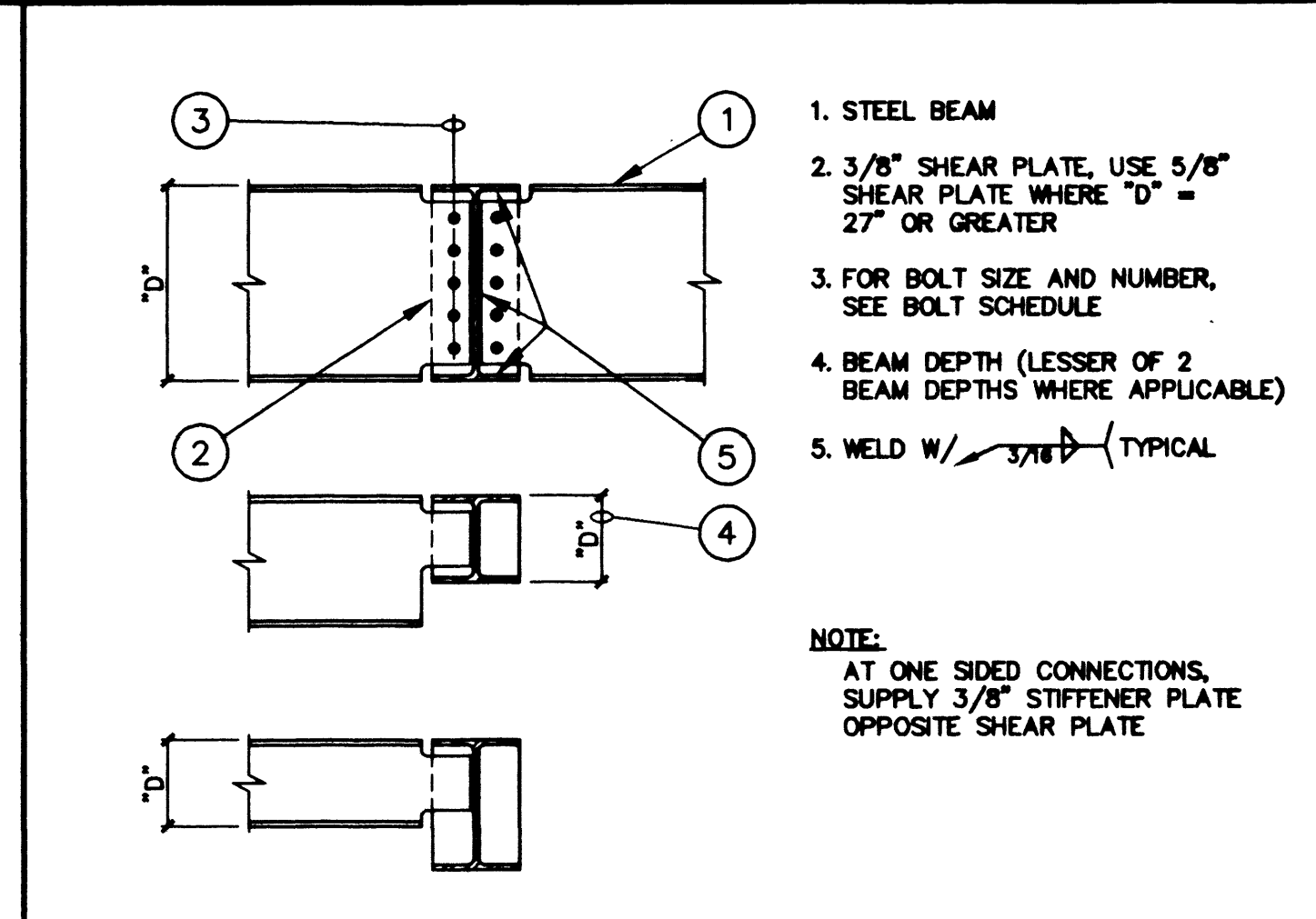
- WHEN EXCEEDS 4" FROM PANEL POINT
- STEEL JOIST
- ANGLE 2 1/2" X 2 1/2" X 1/4" FROM TOP CHORD TO NEAREST BOTTOM CHORD PANEL POINT
- 1/2" ROD FROM BOTTOM CHORD TO NEAREST TOP CHORD PANEL POINT FOR CONCENTRATED LOAD AT BOTTOM CHORD
- WELD W/ 1/4" X 3/8" TYPICAL
- WELD W/ 1/4" X 3/8"

**6 JOIST REINF. FOR CONCENTRATED LOAD** 93522036

NOMINAL BEAM DEPTH "D"	NUMBER OF 3/4" ASTM, A325
UP TO 7"	2
7" TO 10"	2
10" TO 12"	3
12" TO 14"	3
14" TO 16"	4
16" TO 18"	5
18" TO 21"	6
21" TO 24"	7
24" TO 27"	8
27" TO 30"	9
30" TO 33"	9
33" TO 36"	10

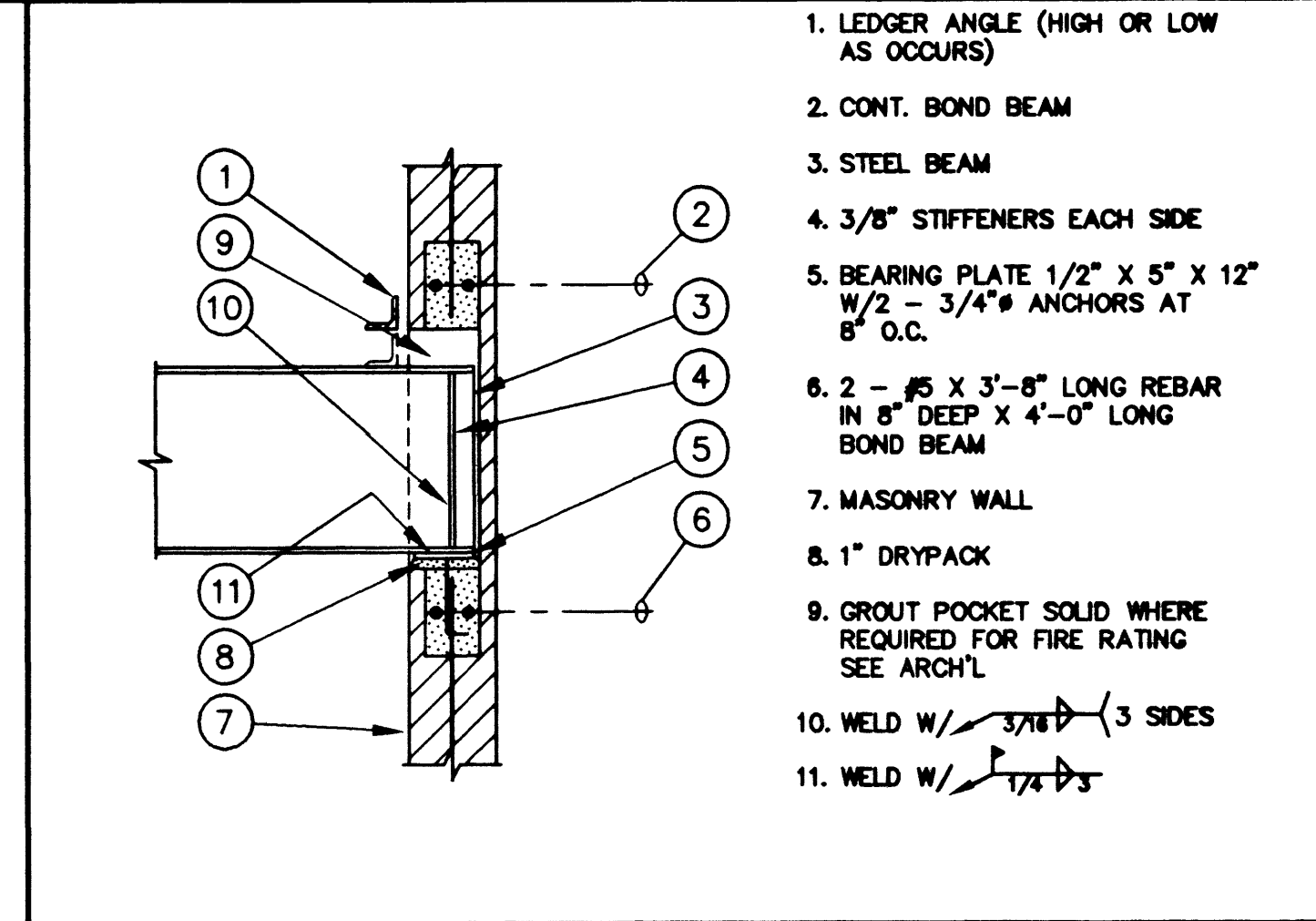
- THE TYPICAL STEEL BEAM TO STEEL BEAM CONNECTION CONSISTS OF 3/4" SINGLE SHEAR PLATES W/3/4" ASTM, A325 BOLTS USE 5/8" SHEAR PLATES WHERE "D" > 27" OR GREATER
- ALL BOLTS SHALL BE INSTALLED USING STANDARD ROUND HOLES IN THE BEAM WEB AND THE SHEAR PLATE PER LATEST AISC SPECIFICATIONS
- MAINTAIN MINIMUM BOLT SPACING AND EDGE DISTANCES PER AISC SPECIFICATIONS

**7 BOLT SCHED. FOR TYP. STEEL CONNECTIONS** 93522037



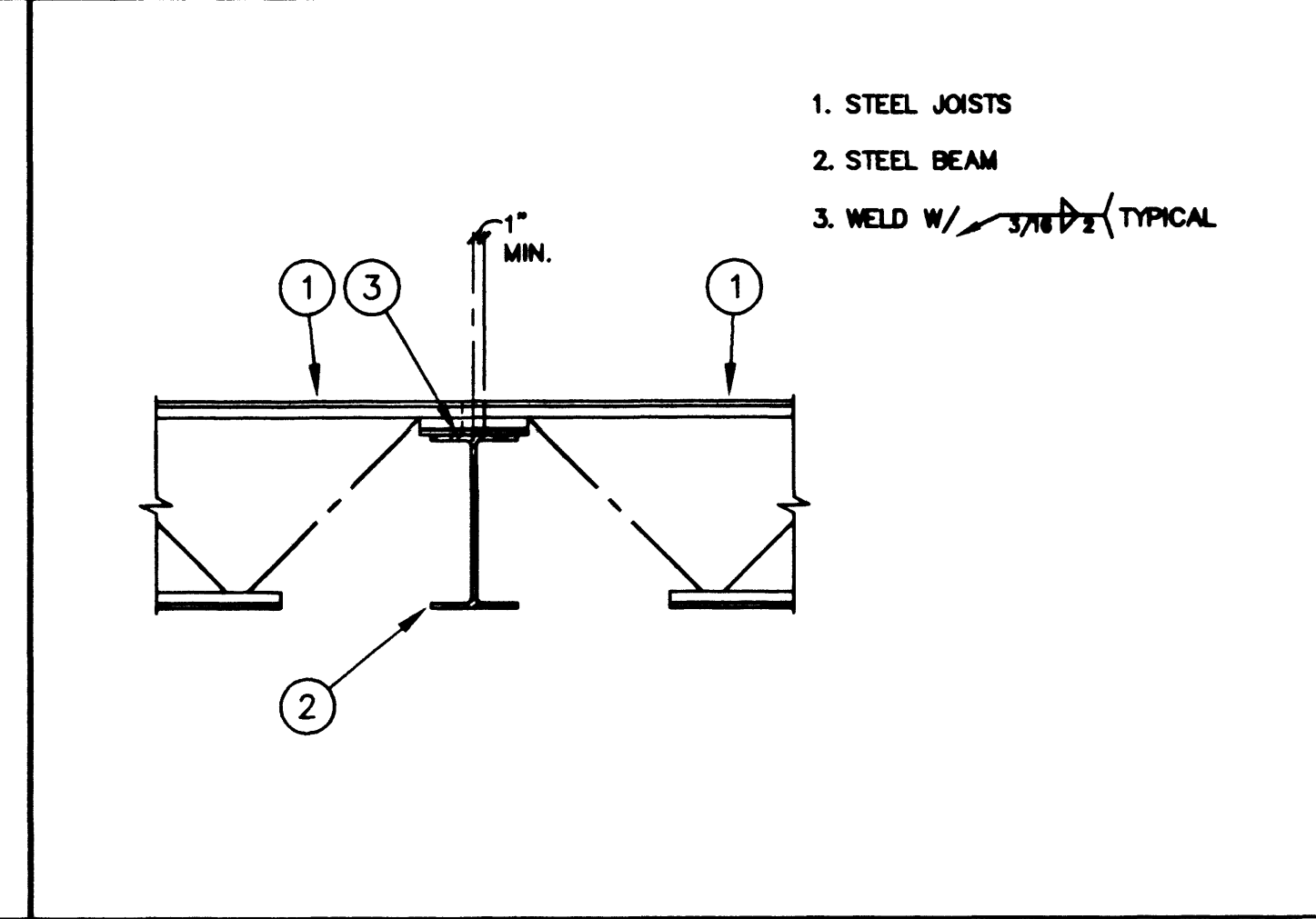
- STEEL BEAM
- 3/8" SHEAR PLATE, USE 5/8" SHEAR PLATE WHERE "D" = 27" OR GREATER
- FOR BOLT SIZE AND NUMBER, SEE BOLT SCHEDULE
- BEAM DEPTH (LESSER OF 2 BEAM DEPTHS WHERE APPLICABLE)
- WELD W/ 1/4" X 3/8" TYPICAL

**8 TYPICAL STEEL BEAM TO BEAM CONN.** 93522038



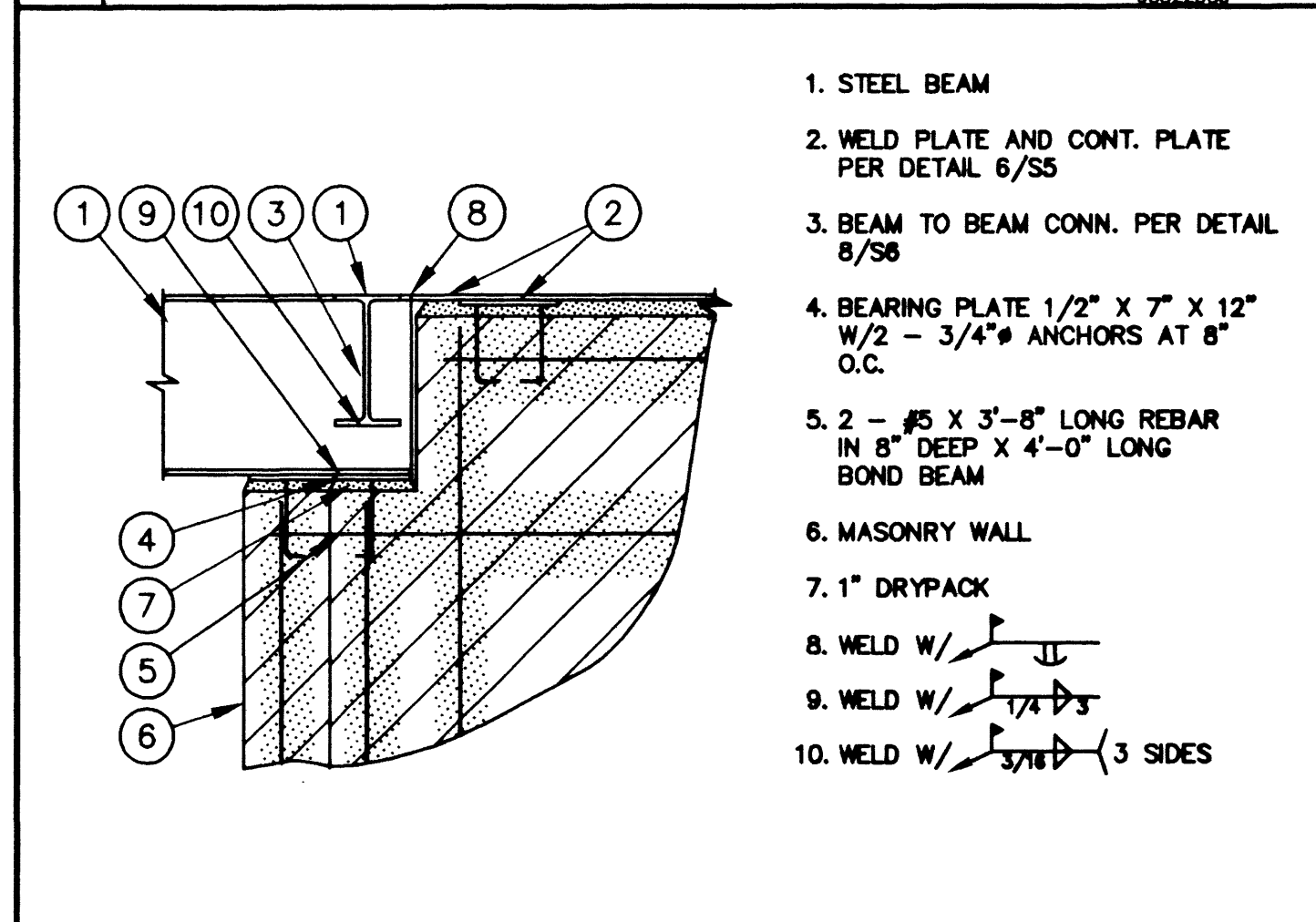
- LEDGER ANGLE (HIGH OR LOW AS OCCURS)
- CONT. BOND BEAM
- STEEL BEAM
- 3/8" STIFFENERS EACH SIDE
- BEARING PLATE 1/2" X 5" X 12" W/2 - 3/4" ANCHORS AT 8" O.C.
- 2 - #5 X 3"-8" LONG REBAR IN 8" DEEP X 4"-0" LONG BOND BEAM
- MASONRY WALL
- 1" DRYPACK
- GROUT POCKET SOLID WHERE REQUIRED FOR FIRE RATING - SEE ARCH'L
- WELD W/ 1/4" X 3/8" (3 SIDES)
- WELD W/ 1/4" X 3/8"

**9 STEEL BEAM AT MASONRY WALL** 93522039



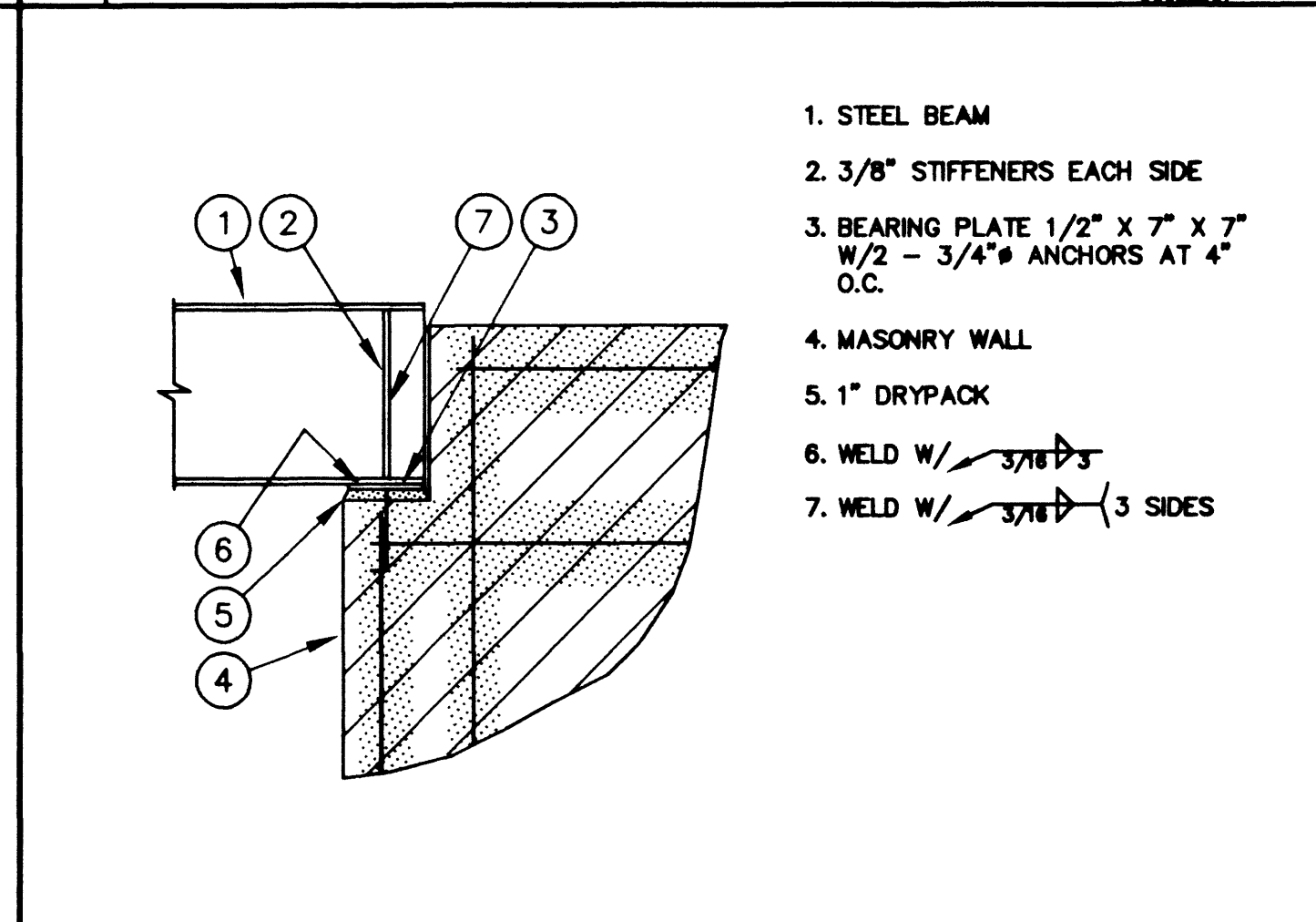
- STEEL JOISTS
- STEEL BEAM
- WELD W/ 1/4" X 3/8" TYPICAL

**10 STEEL JOISTS AT STEEL BEAM** 93522040



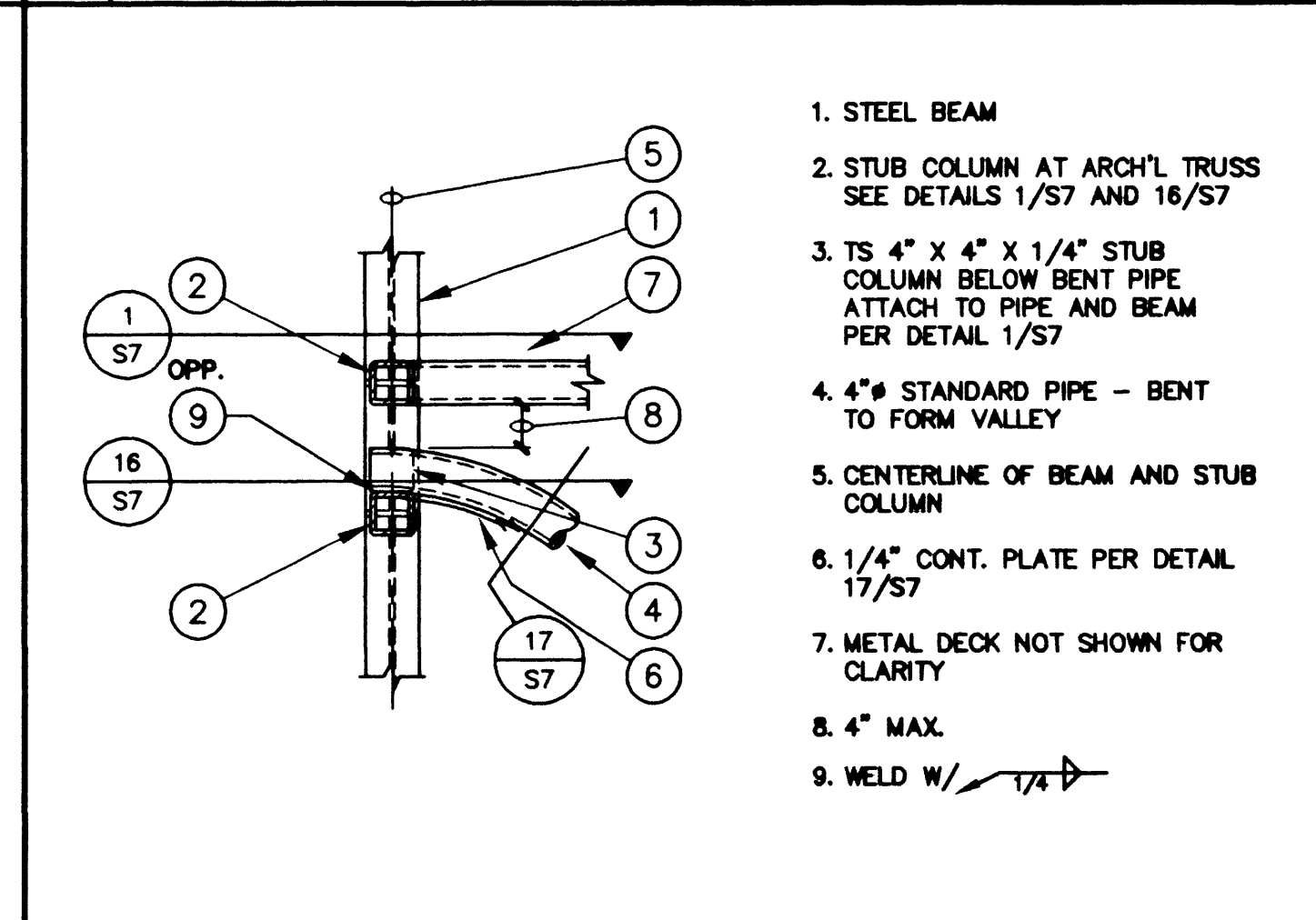
- STEEL BEAM
- WELD PLATE AND CONT. PLATE PER DETAIL 6/55
- BEAM TO BEAM CONN. PER DETAIL 6/55
- BEARING PLATE 1/2" X 7" X 12" W/2 - 3/4" ANCHORS AT 8" O.C.
- 2 - #5 X 3"-8" LONG REBAR IN 8" DEEP X 4"-0" LONG BOND BEAM
- MASONRY WALL
- 1" DRYPACK
- WELD W/ 1/4" X 3/8" (3 SIDES)
- WELD W/ 1/4" X 3/8" (3 SIDES)
- WELD W/ 1/4" X 3/8" (3 SIDES)

**11 STEEL BEAM AT MASONRY WALL** 93522041



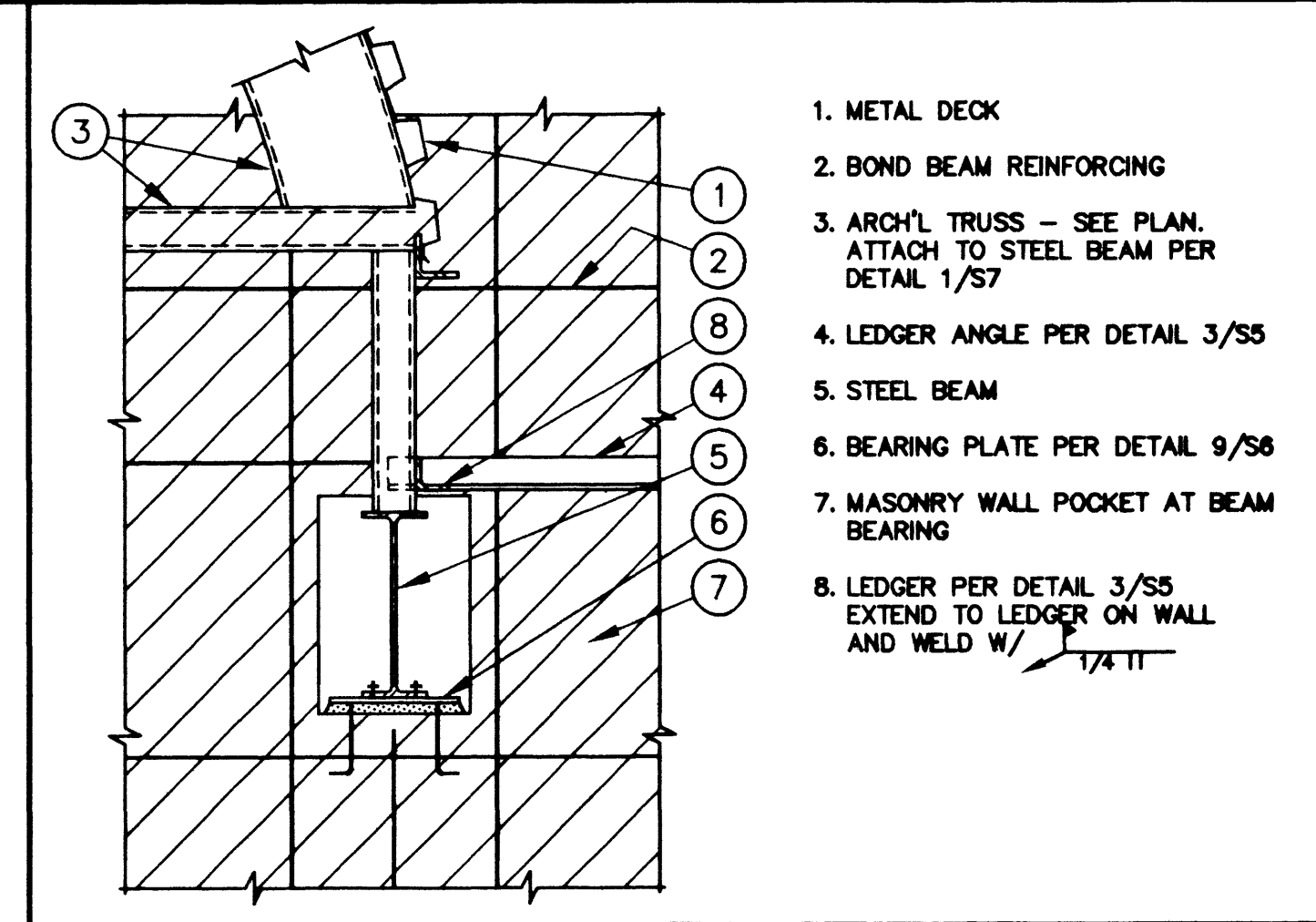
- STEEL BEAM
- 3/8" STIFFENERS EACH SIDE
- BEARING PLATE 1/2" X 7" X 12" W/2 - 3/4" ANCHORS AT 8" O.C.
- MASONRY WALL
- 1" DRYPACK
- WELD W/ 1/4" X 3/8" (3 SIDES)
- WELD W/ 1/4" X 3/8" (3 SIDES)

**12 STEEL BEAM AT MASONRY WALL** 93522042



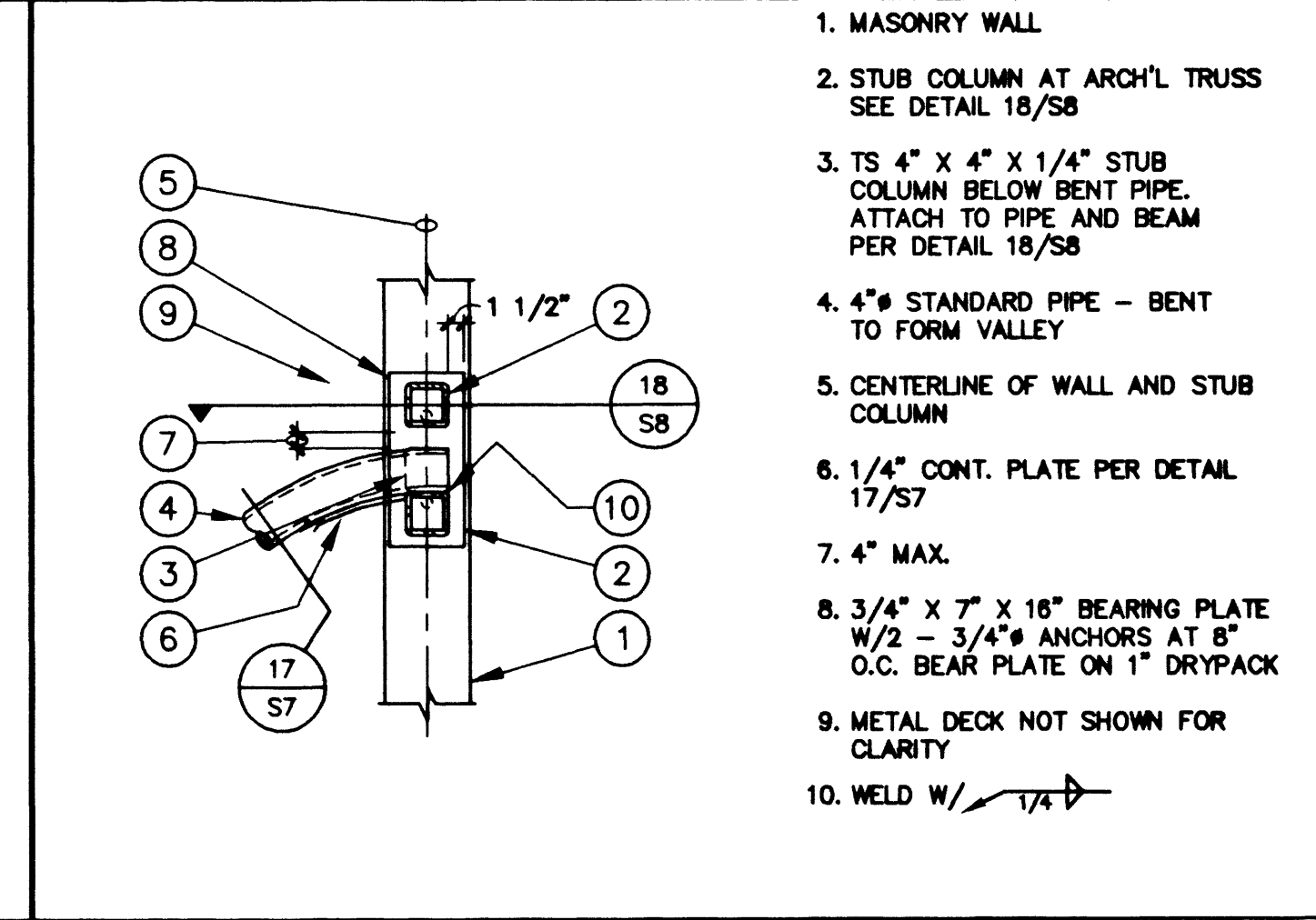
- STEEL BEAM
- STUB COLUMN AT ARCH'L TRUSS SEE DETAILS 1/57 AND 16/57
- TS 4" X 4" X 1/4" STUB COLUMN BELOW BENT PIPE ATTACH TO PIPE AND BEAM PER DETAIL 1/57
- 4" X 4" STANDARD PIPE - BENT TO FORM VALLEY
- CENTERLINE OF BEAM AND STUB COLUMN
- 1/4" CONT. PLATE PER DETAIL 17/57
- METAL DECK NOT SHOWN FOR CLARITY
- 4" MAX.
- WELD W/ 1/4" X 3/8"

**13 PLAN - ARCH'L TRUSSES AT STEEL BEAM** 93522043



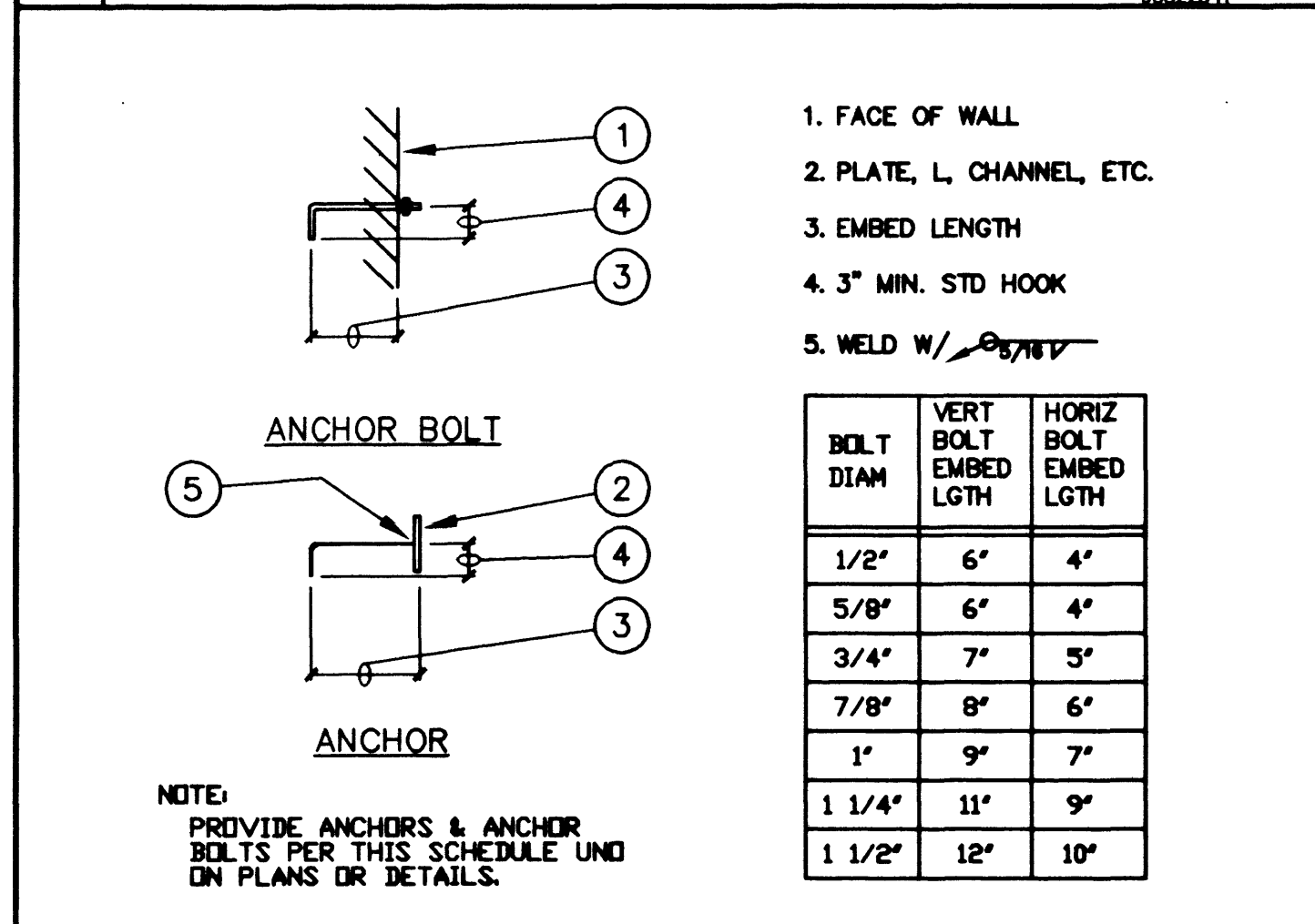
- METAL DECK
- BOND BEAM REINFORCING
- ARCH'L TRUSS - SEE PLAN, ATTACH TO PIPE AND BEAM PER DETAIL 16/57
- LEDGER ANGLE PER DETAIL 3/55
- STEEL BEAM
- BEARING PLATE PER DETAIL 9/58
- MASONRY WALL POCKET AT BEAM BEARING
- LEDGER PER DETAIL 3/55 EXTEND TO LEDGER ON WALL AND WELD W/ 1/4" X 3/8"
- 4" MAX.
- WELD W/ 1/4" X 3/8"

**14 STEEL BEAM AT MASONRY WALL** 93522044



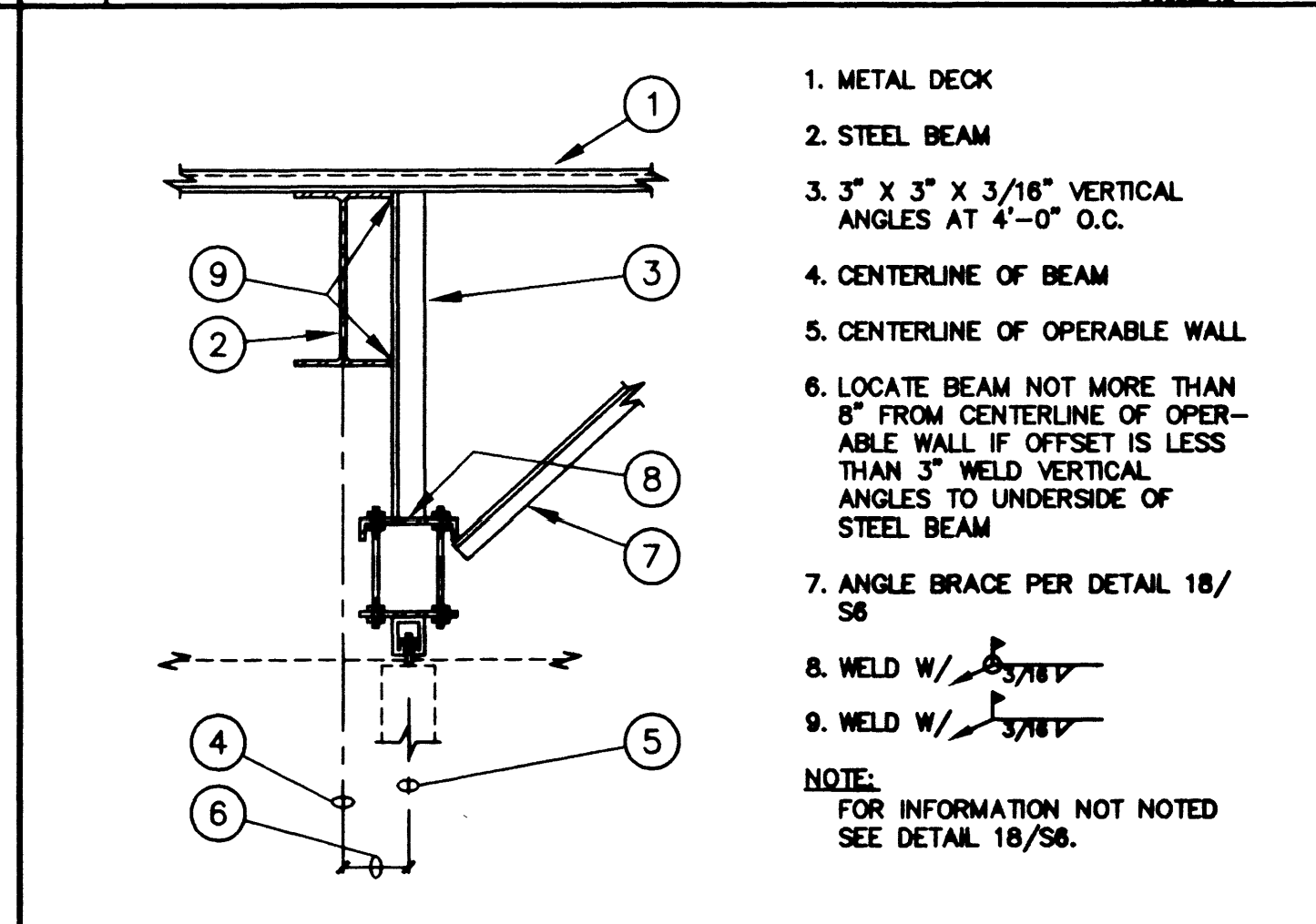
- MASONRY WALL
- STUB COLUMN AT ARCH'L TRUSS SEE DETAIL 18/58
- TS 4" X 4" X 1/4" STUB COLUMN BELOW BENT PIPE ATTACH TO PIPE AND BEAM PER DETAIL 16/57
- 4" X 4" STANDARD PIPE - BENT TO FORM VALLEY
- CENTERLINE OF WALL AND STUB COLUMN
- 1/4" CONT. PLATE PER DETAIL 17/57
- 4" MAX.
- 3/4" X 7" X 18" BEARING PLATE W/2 - 3/4" ANCHORS AT 8" O.C. BEAR PLATE ON 1" DRYPACK
- METAL DECK NOT SHOWN FOR CLARITY
- WELD W/ 1/4" X 3/8"

**15 PLAN - ARCH'L TRUSSES AT STEEL BEAM** 93522045



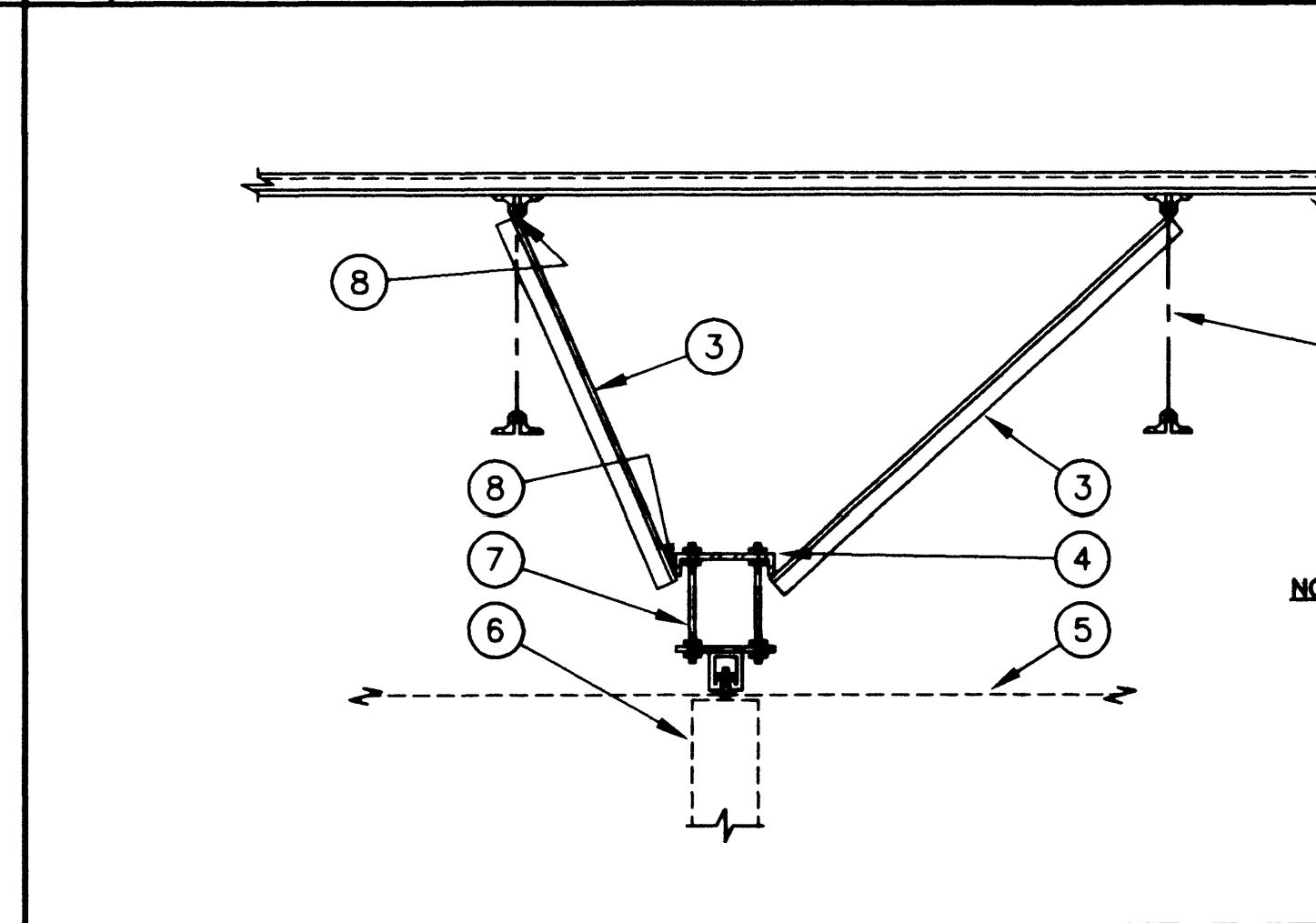
- FACE OF WALL
  - PLATE, L, CHANNEL, ETC.
  - EMBED LENGTH
  - 3" MIN. STD HOOK
  - WELD W/ 1/4" X 3/8"
- | BOLT DIAM | VERT EMBED LGTH | HORIZ EMBED LGTH |
|-----------|-----------------|------------------|
| 1/2"      | 6"              | 4"               |
| 5/8"      | 6"              | 4"               |
| 3/4"      | 7"              | 5"               |
| 7/8"      | 8"              | 6"               |
| 1"        | 9"              | 7"               |
| 1 1/4"    | 11"             | 9"               |
| 1 1/2"    | 12"             | 10"              |

**16 TYP ANCHOR & ANCHOR BOLT SCHED** 93522046



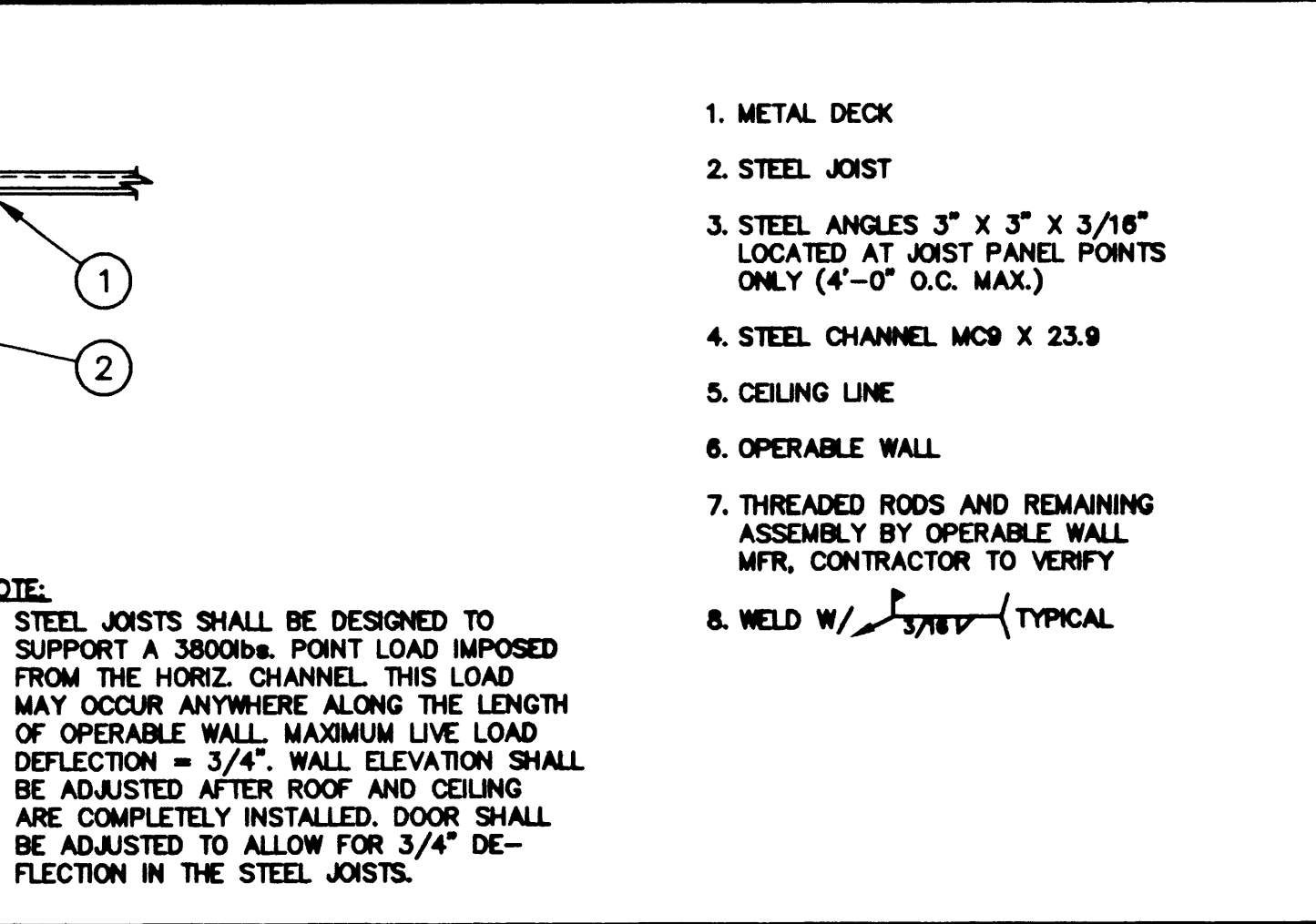
- METAL DECK
- STEEL BEAM
- 3" X 3" X 3/16" VERTICAL ANGLES AT 4"-0" O.C.
- CENTERLINE OF BEAM
- CENTERLINE OF OPERABLE WALL
- LOCATE BEAM NOT MORE THAN 8" FROM CENTERLINE OF OPERABLE WALL IF OFFSET IS LESS THAN 3" WELD VERTICAL ANGLES TO UNDERSIDE OF STEEL BEAM
- ANGLE BRACE PER DETAIL 18/58
- WELD W/ 1/4" X 3/8"
- WELD W/ 1/4" X 3/8"
- NOTE: FOR INFORMATION NOT NOTED SEE DETAIL 18/58.

**17 OPERABLE WALL SUPPORT** 93522047



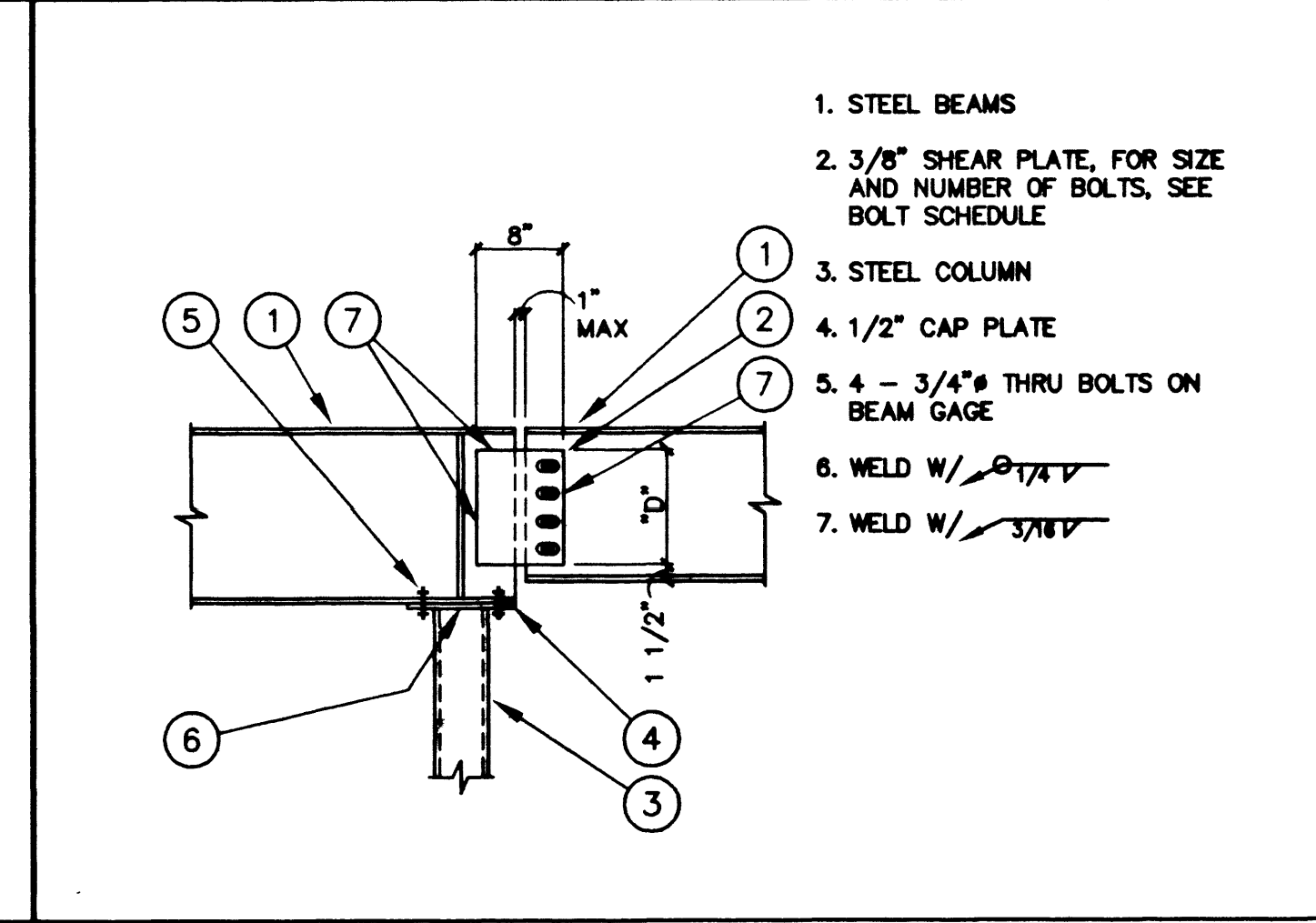
- STEEL BEAM
- STEEL JOIST
- METAL DECK
- 3/8" SHEAR PLATE
- 3/8" STIFFENER PLATE
- FOR BOLT SIZE AND NUMBER SEE DETAILS 7/58 AND 6/58
- WELD W/ 1/4" X 3/8"
- WELD W/ 1/4" X 3/8" (3 SIDES)

**18 TYPICAL OPERABLE WALL SUPPORT** 93522048



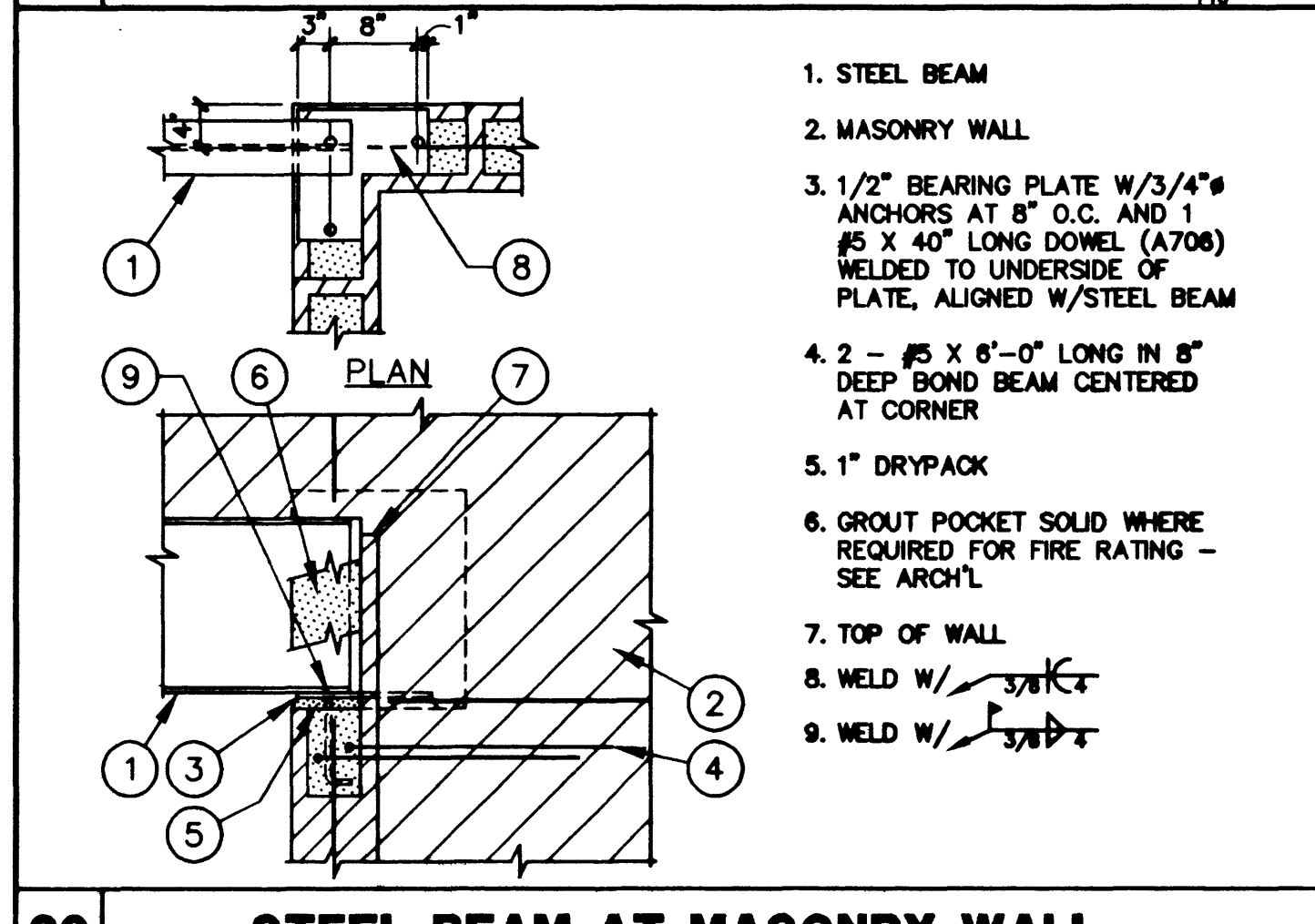
- METAL DECK
- STEEL JOIST
- STEEL ANGLES 3" X 3" X 3/16" LOCATED AT JOIST PANEL POINTS ONLY (4"-0" O.C. MAX.)
- 1/2" CAP PLATE
- CEILING LINE
- OPERABLE WALL
- THREADED RODS AND REMAINING ASSEMBLY BY OPERABLE WALL MFR, CONTRACTOR TO VERIFY
- WELD W/ 1/4" X 3/8" TYPICAL
- WELD W/ 1/4" X 3/8"

**19 STEEL BEAMS AT STEEL COLUMN** 93522049



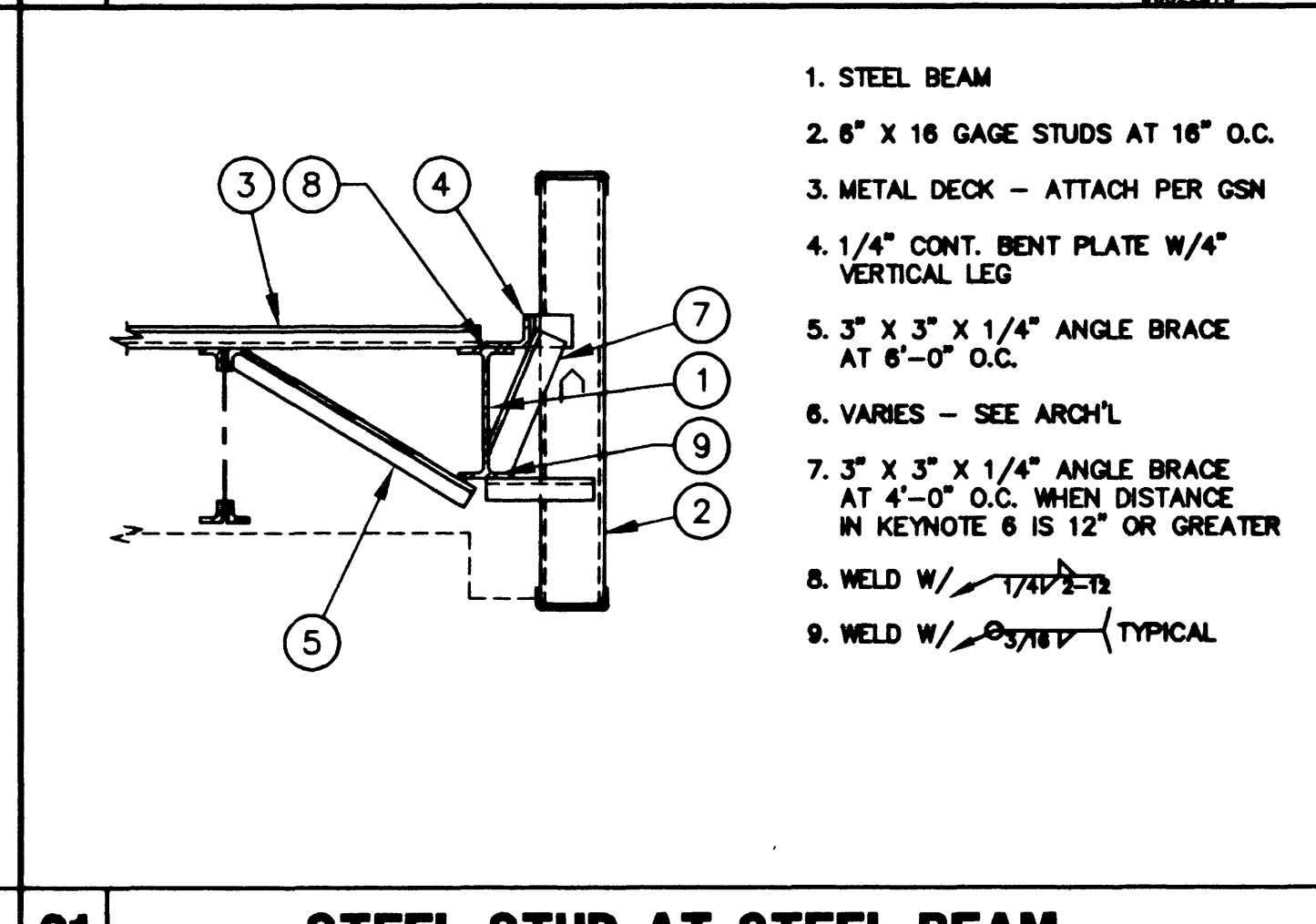
- STEEL BEAMS
- 3/8" SHEAR PLATE, FOR SIZE AND NUMBER OF BOLTS, SEE BOLT SCHEDULE
- STEEL COLUMN
- 1/2" CAP PLATE
- 4 - 3/4" THRU BOLTS ON BEAM GAGE
- WELD W/ 1/4" X 3/8"
- WELD W/ 1/4" X 3/8"

**20 STEEL BEAM AT MASONRY WALL** 93522050



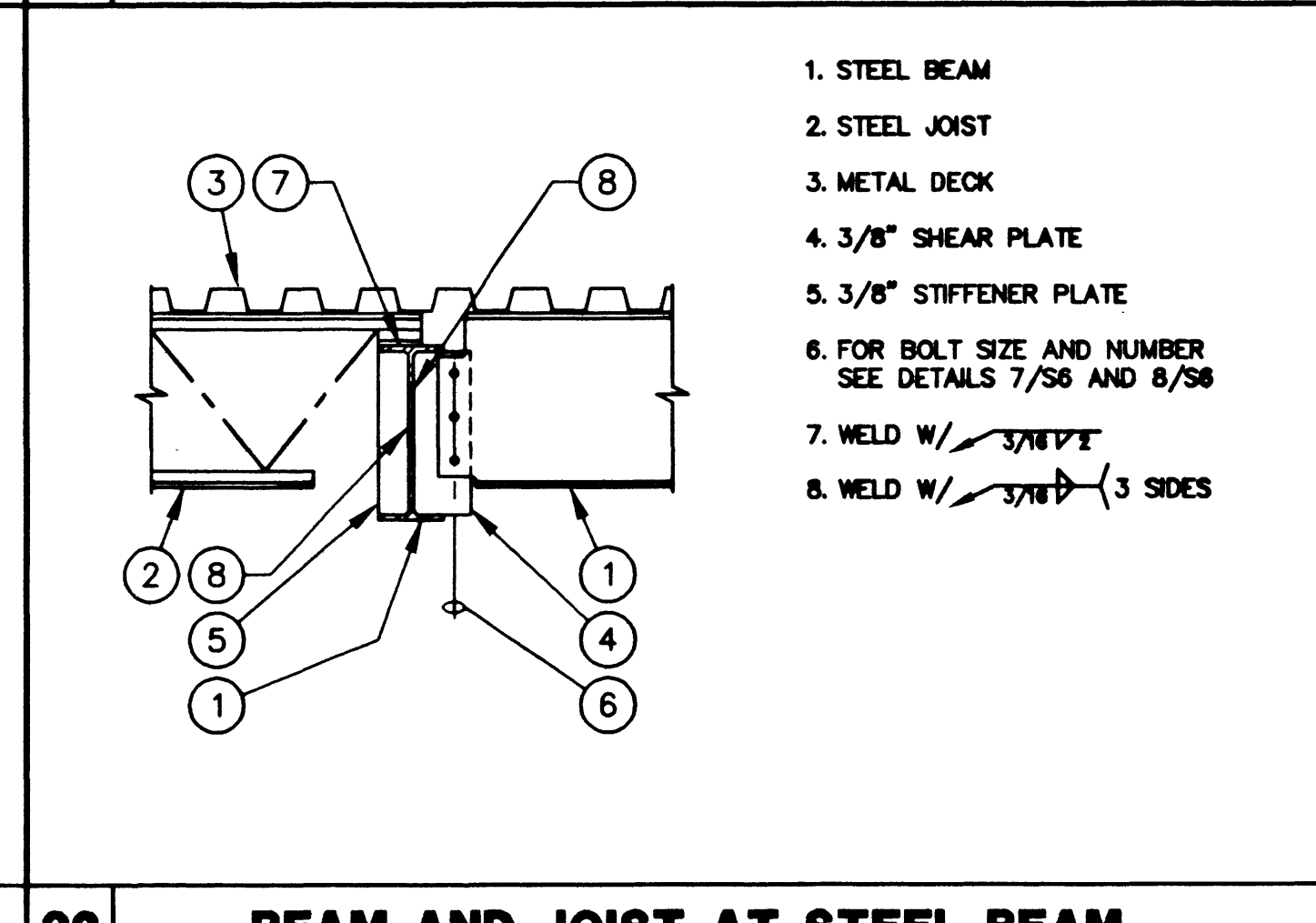
- STEEL BEAM
- MASONRY WALL
- 1/2" BEARING PLATE W/3/4" ANCHORS AT 8" O.C. AND 1 #5 X 40" LONG BOND (A708) WELDED TO UNDERSIDE OF PLATE, ALIGNED W/STEEL BEAM
- 2 - #5 X 6"-0" LONG IN 8" DEEP BOND BEAM CENTERED AT CORNER
- 1" DRYPACK
- GROUT POCKET SOLID WHERE REQUIRED FOR FIRE RATING - SEE ARCH'L
- TOP OF WALL
- WELD W/ 1/4" X 3/8"
- WELD W/ 1/4" X 3/8"

**21 STEEL STUD AT STEEL BEAM** 93522051



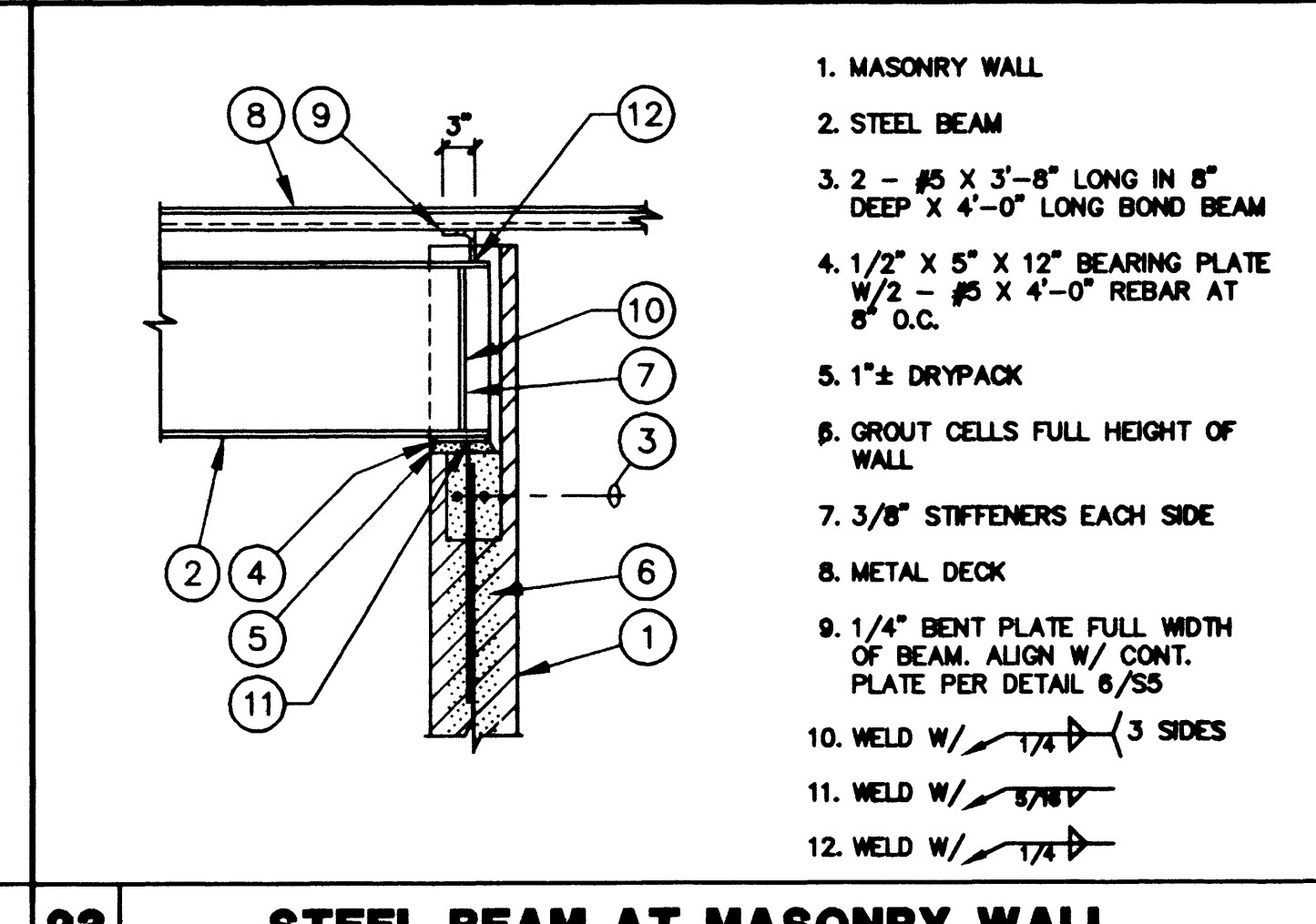
- STEEL BEAM
- 8" X 16 GAGE STUDS AT 16" O.C.
- METAL DECK - ATTACH PER GSN
- 1/4" CONT. BENT PLATE W/4" VERTICAL LEG
- 3" X 3" X 1/4" ANGLE BRACE AT 6"-0" O.C.
- VARIABLES - SEE ARCH'L
- 3" X 3" X 1/4" ANGLE BRACE AT 4"-0" O.C. WHEN DISTANCE IN KEYNOTE 6 IS 12" OR GREATER
- WELD W/ 1/4" X 3/8" TYPICAL
- WELD W/ 1/4" X 3/8" TYPICAL

**22 BEAM AND JOIST AT STEEL BEAM** 93522052



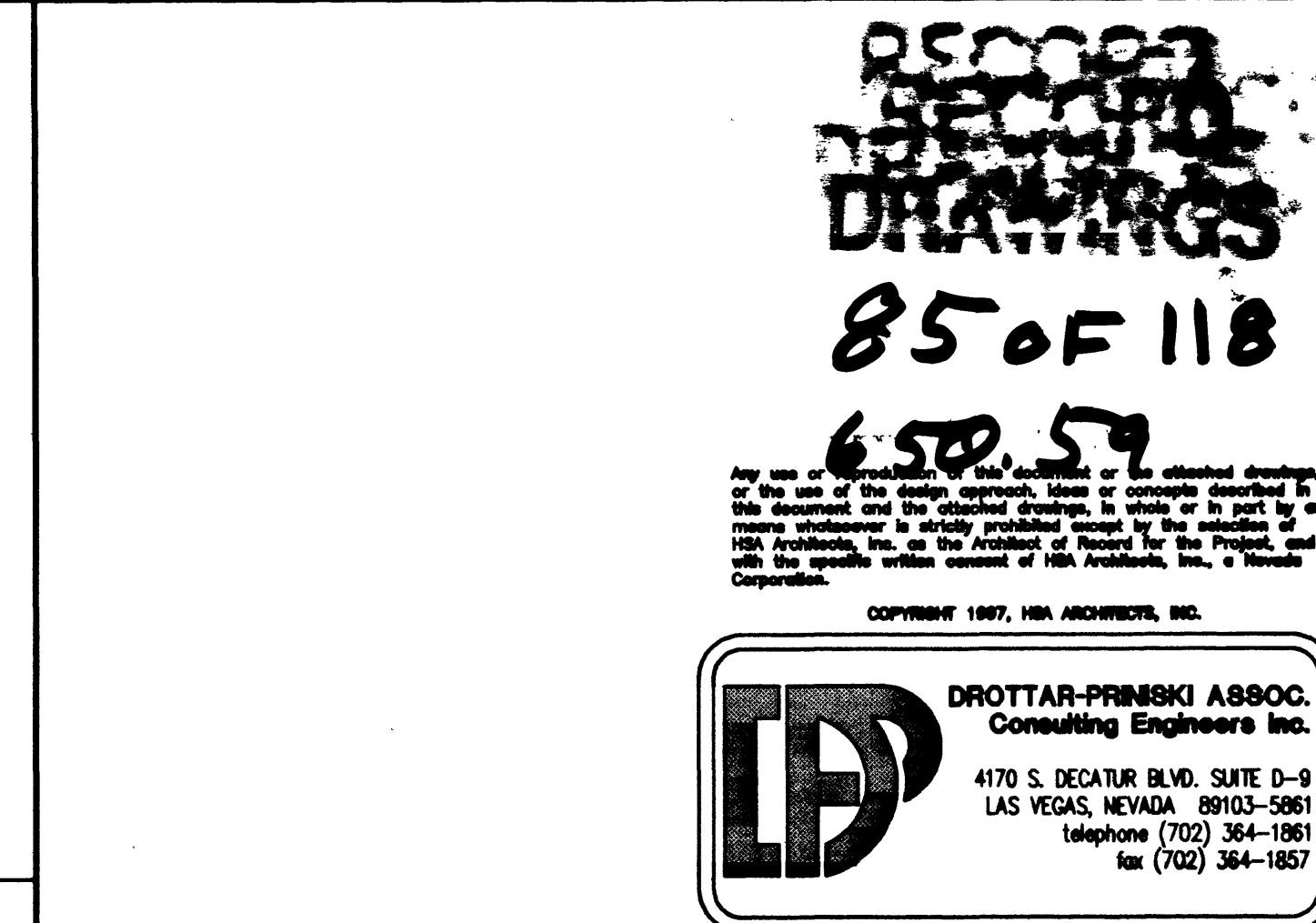
- STEEL BEAM
- STEEL JOIST
- METAL DECK
- 3/8" SHEAR PLATE
- 3/8" STIFFENER PLATE
- FOR BOLT SIZE AND NUMBER SEE DETAILS 7/58 AND 6/58
- WELD W/ 1/4" X 3/8"
- WELD W/ 1/4" X 3/8" (3 SIDES)

**23 STEEL BEAM AT MASONRY WALL** 93522053



- MASONRY WALL
- STEEL BEAM
- 2 - #5 X 3"-8" LONG IN 8" DEEP X 4"-0" LONG BOND BEAM
- 1/2" X 5" X 12" BEARING PLATE W/2 - 3/4" ANCHORS AT 8" O.C.
- 1" DRYPACK
- GROUT CELLS FULL HEIGHT OF WALL
- 3/8" STIFFENERS EACH SIDE
- METAL DECK
- 1/4" BENT PLATE FULL WIDTH OF BEAM, ALIGN W/ CONT. PLATE PER DETAIL 6/55
- WELD W/ 1/4" X 3/8" (3 SIDES)
- WELD W/ 1/4" X 3/8"
- WELD W/ 1/4" X 3/8"

**24 STEEL BEAM AT MASONRY WALL** 93522054



- MASONRY WALL
- STEEL BEAM
- 2 - #5 X 3"-8" LONG IN 8" DEEP X 4"-0" LONG BOND BEAM
- 1/2" X 5" X 12" BEARING PLATE W/2 - 3/4" ANCHORS AT 8" O.C.
- 1" DRYPACK
- GROUT CELLS FULL HEIGHT OF WALL
- 3/8" STIFFENERS EACH SIDE
- METAL DECK
- 1/4" BENT PLATE FULL WIDTH OF BEAM, ALIGN W/ CONT. PLATE PER DETAIL 6/55
- WELD W/ 1/4" X 3/8" (3 SIDES)
- WELD W/ 1/4" X 3/8"
- WELD W/ 1/4" X 3/8"

**25 STEEL BEAM AT MASONRY WALL** 93522055

DATE: \_\_\_\_\_

DESCRIPTION: \_\_\_\_\_

REVISION: \_\_\_\_\_

WAYNE SCHREINER AIA  
THOMAS M. SILVA AIA

1525 WEST QUART AVENUE  
LAS VEGAS, NV 89102  
(702) 382-0077  
FAX (702) 382-0087

FRAMING DETAILS

CITY OF LAS VEGAS DEPARTMENT OF PARK AND LEISURE ACTIVITIES  
DURANGO RECREATION FACILITY

Verify all Dimensions and Conditions at the Site

Sheet Title: \_\_\_\_\_

Job: 960901(96543)

Date: 20, FEB. 1998

Drawn By: TT

Check: SCG

Sheet: S6

of 45 114  
8 of 11

650.59

RECORD DRAWINGS  
85 OF 118  
650.59

As per the contract documents, the contractor shall be responsible for the accuracy of the information provided herein. It is the responsibility of the contractor to verify the information provided herein. The contractor shall be held responsible for any errors or omissions. This document is the property of the City of Las Vegas and shall remain the property of the City of Las Vegas. All rights reserved.

COPYRIGHT 1997, HOK ARCHITECTS, INC.

DROTTAR-PRINSKI ASSOC.  
Consulting Engineers Inc.  
4175 S. DECATUR BLVD. SUITE B-9  
LAS VEGAS, NEVADA 89103-5981  
Telephone (702) 364-1981  
Fax (702) 364-1857