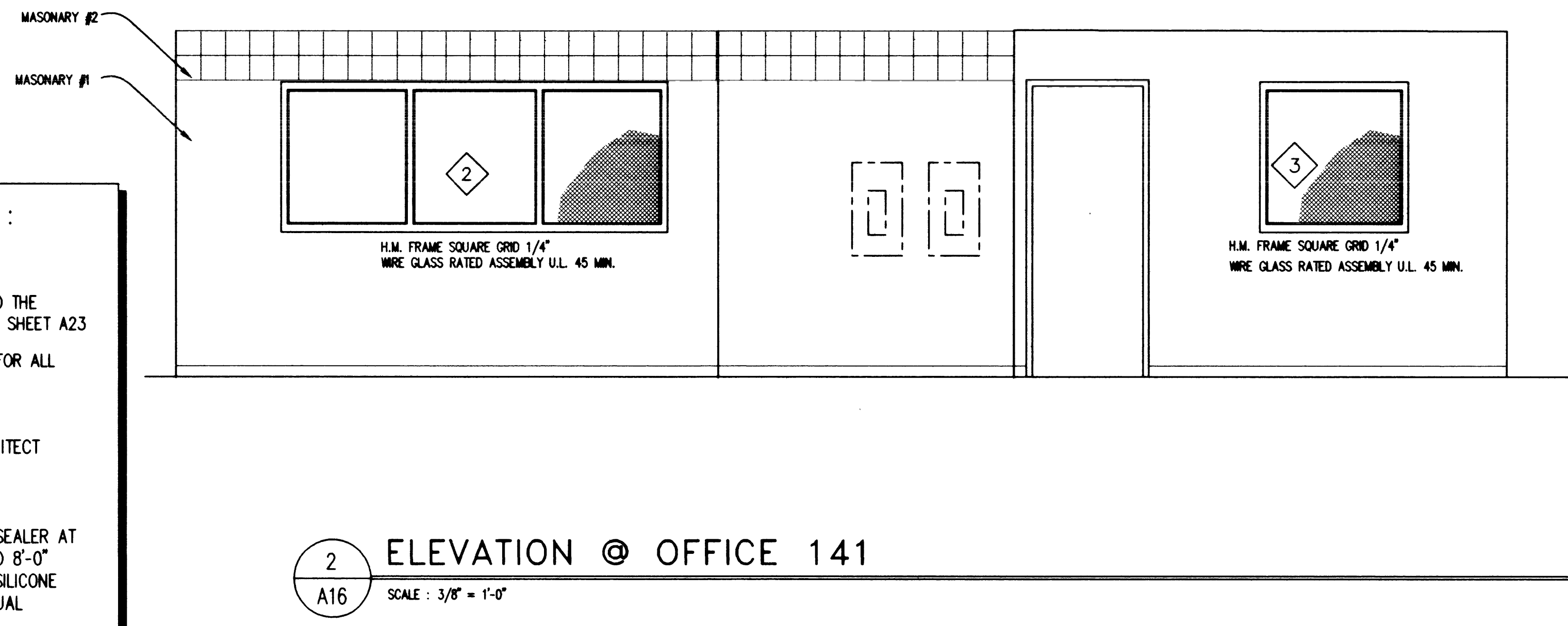
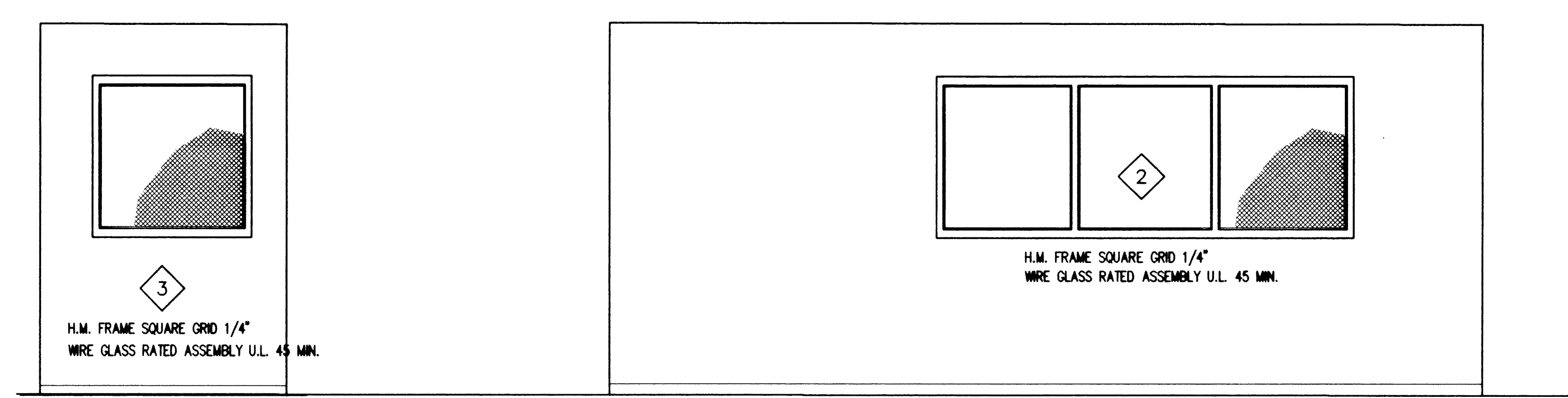


1 ELEVATION @ LOBBY 100
A16 SCALE: 3/8" = 1'-0"

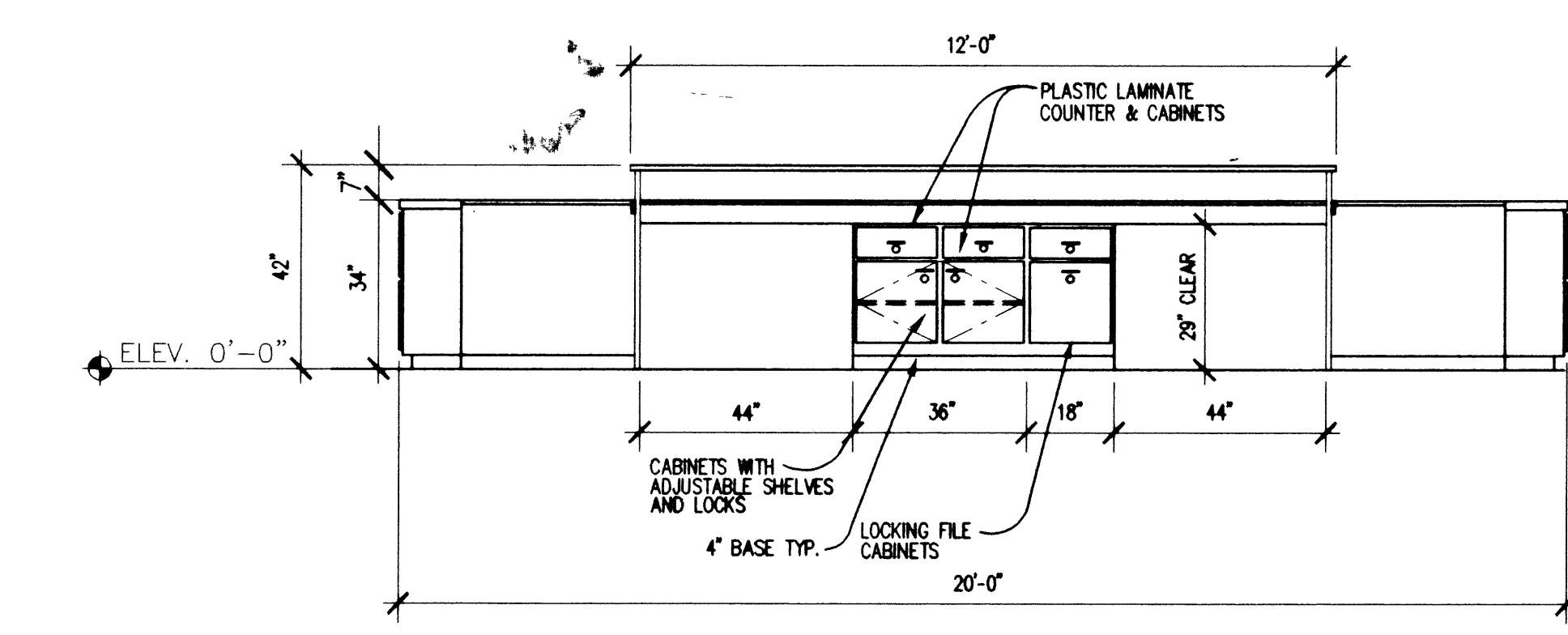
NOTES:
FOR PAINT, CASEWORK, WALL COVERINGS AND BASE MATERIALS, REFER TO THE ROOM FINISH SCHEDULE ON SHEET A23
REFER TO SPECIFICATIONS FOR ALL CASEWORK HARDWARE
COLORS FOR ALL FINISHES TO BE SELECTED BY ARCHITECT DURING THE SUBMITTAL PROCESS.
PROVIDE CLEAR GRAFFITI SEALER AT ALL INTERIOR MASONRY TO 8'-0" A.F.F. SEALER TO BE SILICONE TWR 255 SEALANT OR EQUAL



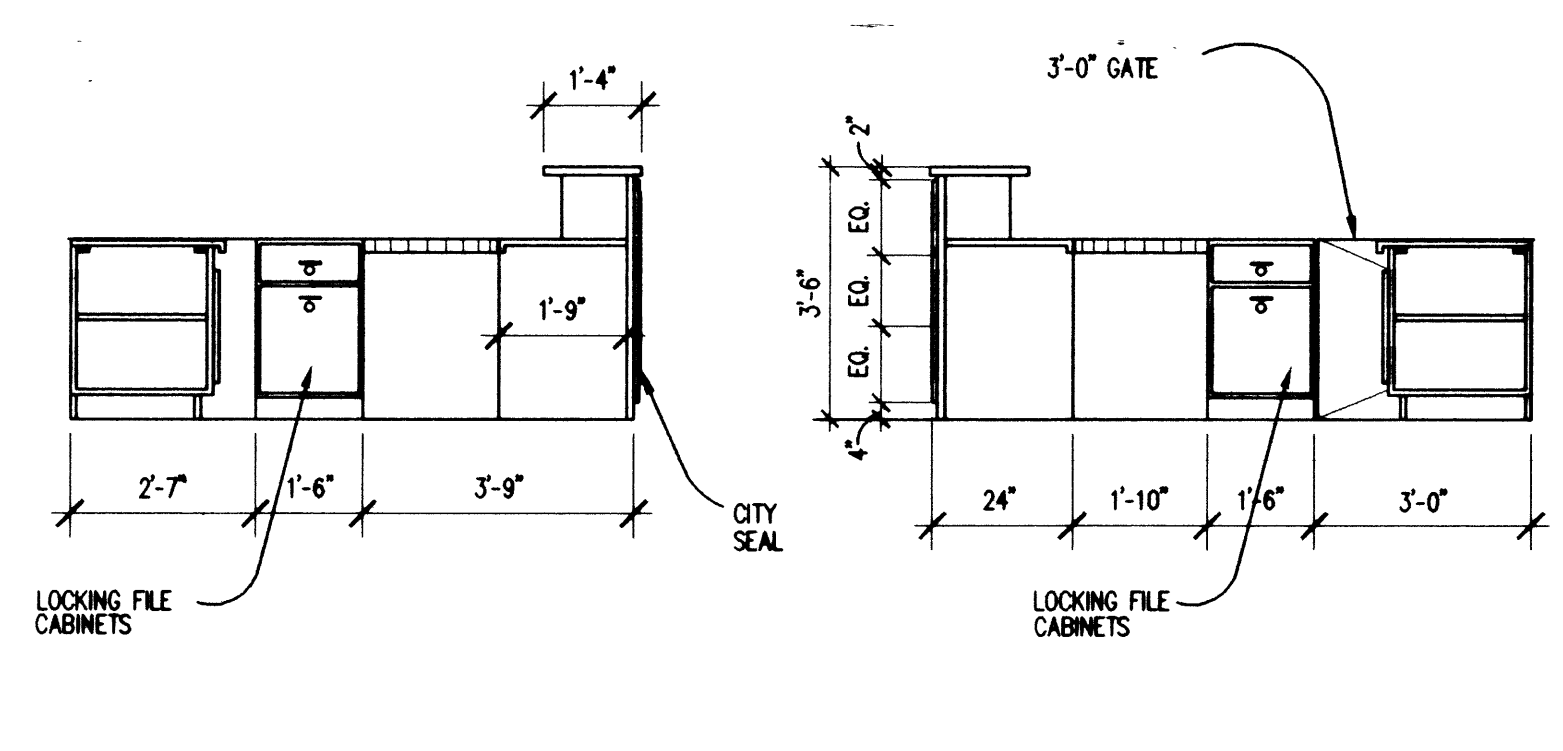
2 ELEVATION @ OFFICE 141
A16 SCALE: 3/8" = 1'-0"



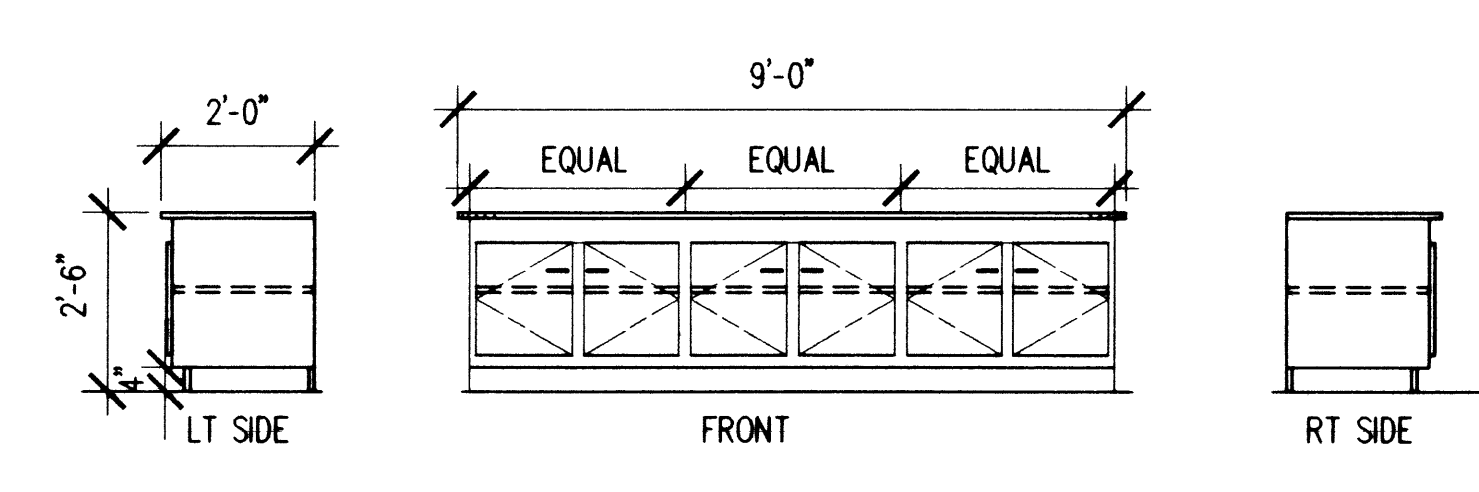
3 ELEVATION @ OFFICE 141
A16 SCALE: 3/8" = 1'-0"



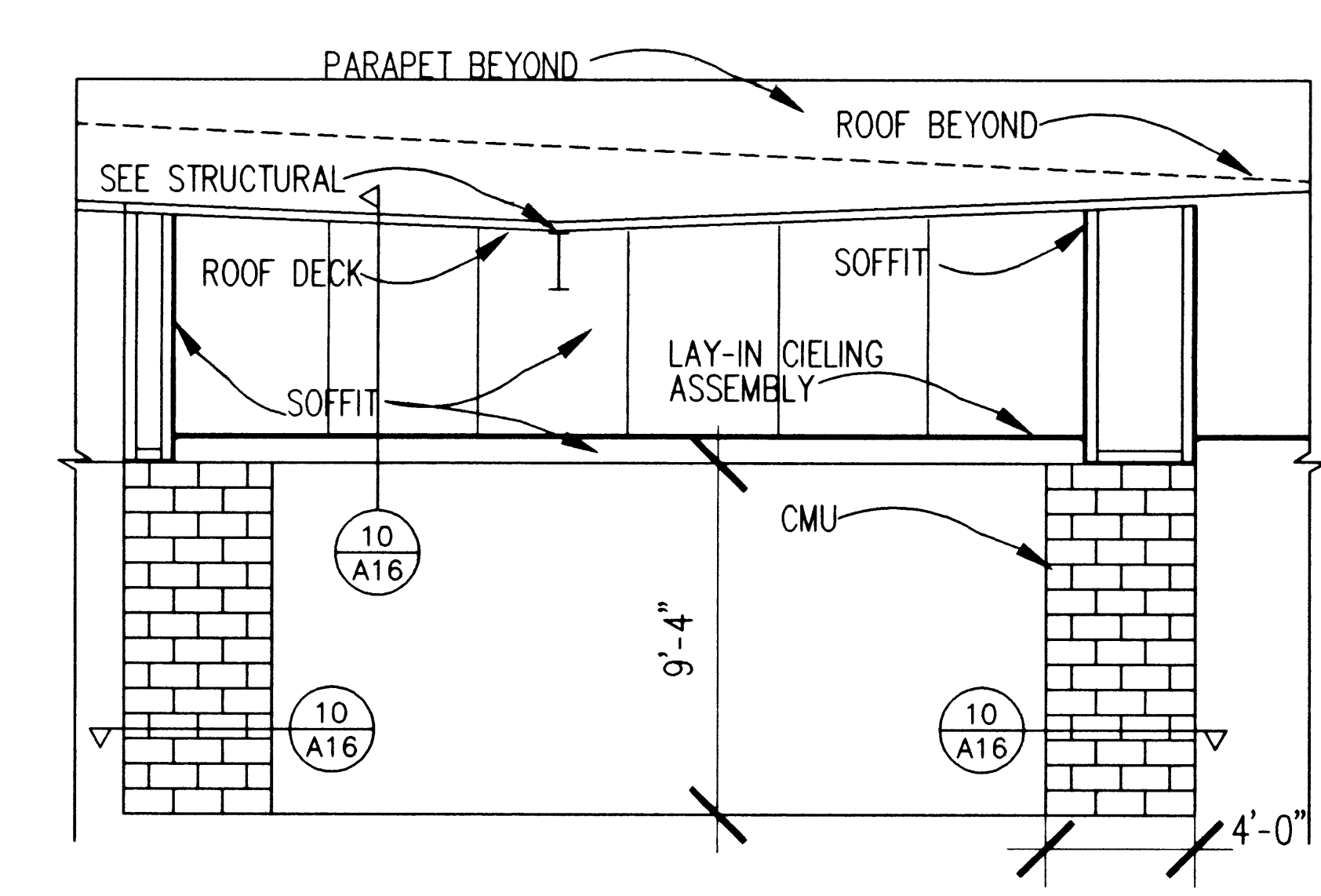
4 ELEVATION @ CONTROL DESK 100
A16 SCALE: 3/8" = 1'-0"



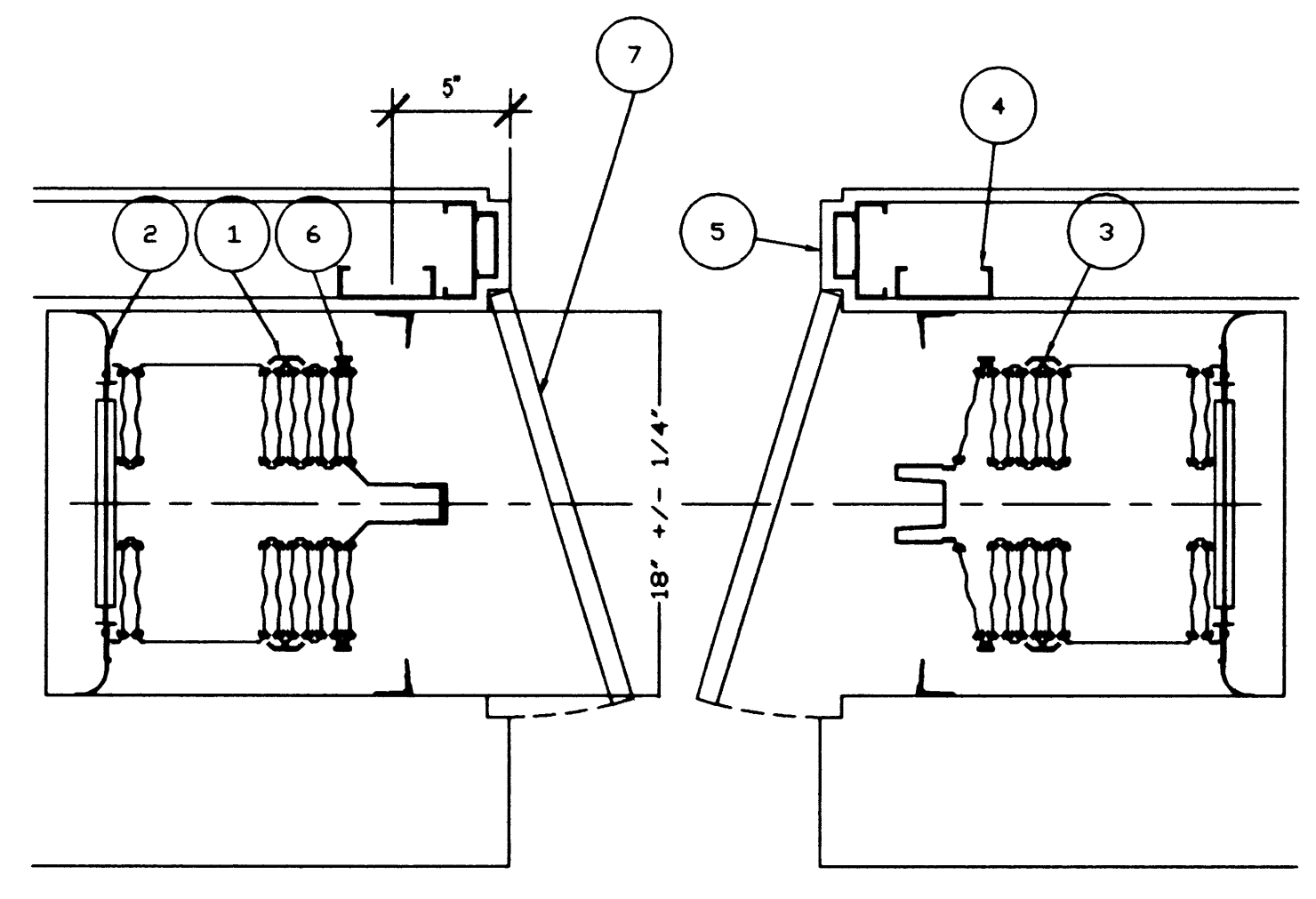
5 ELEVATION @ CONTROL DESK (SIDES) 100
A16 SCALE: 3/8" = 1'-0"



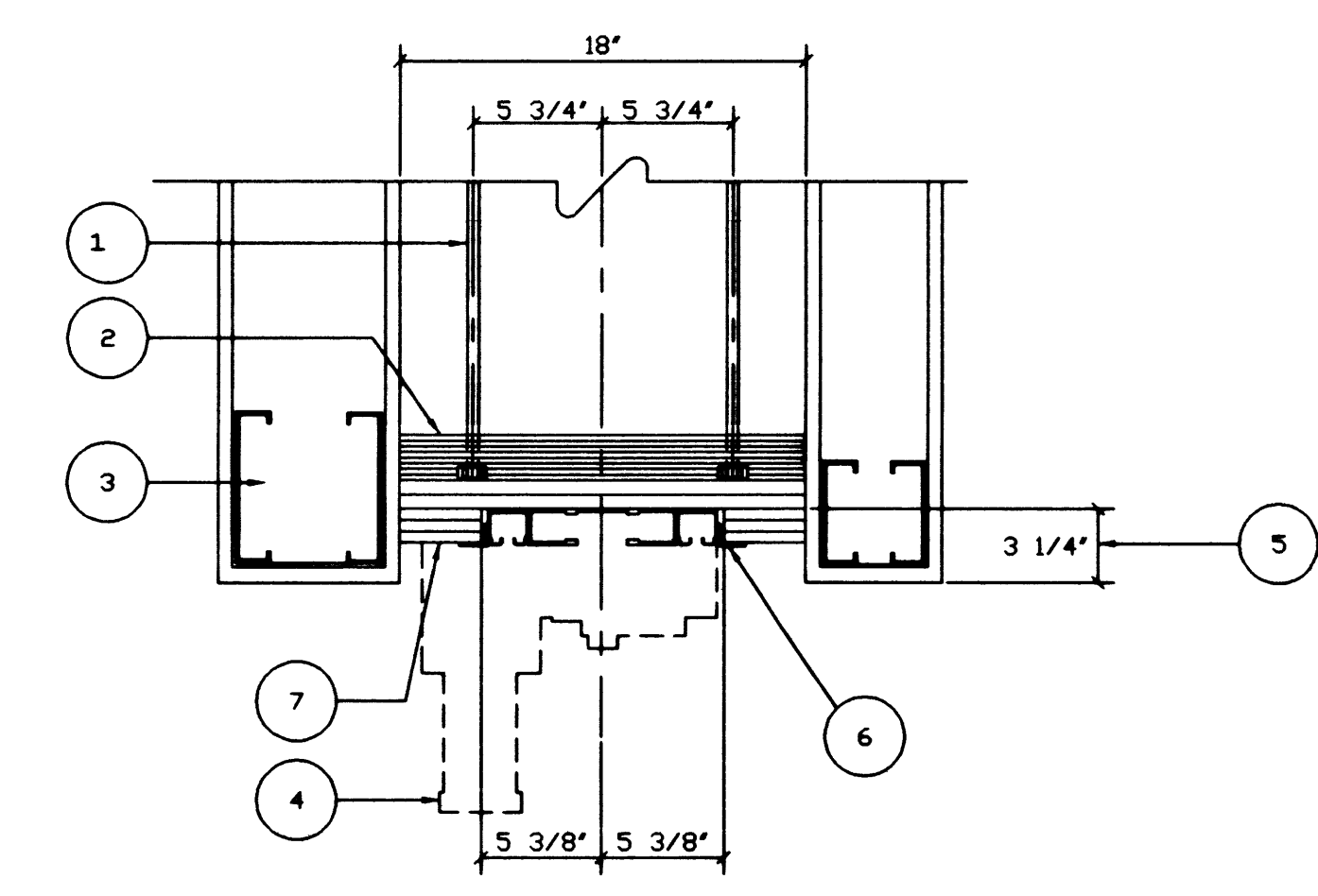
6 ELEVATION @ CONTROL DESK BACK CABINET
A16 SCALE: 3/8" = 1'-0"



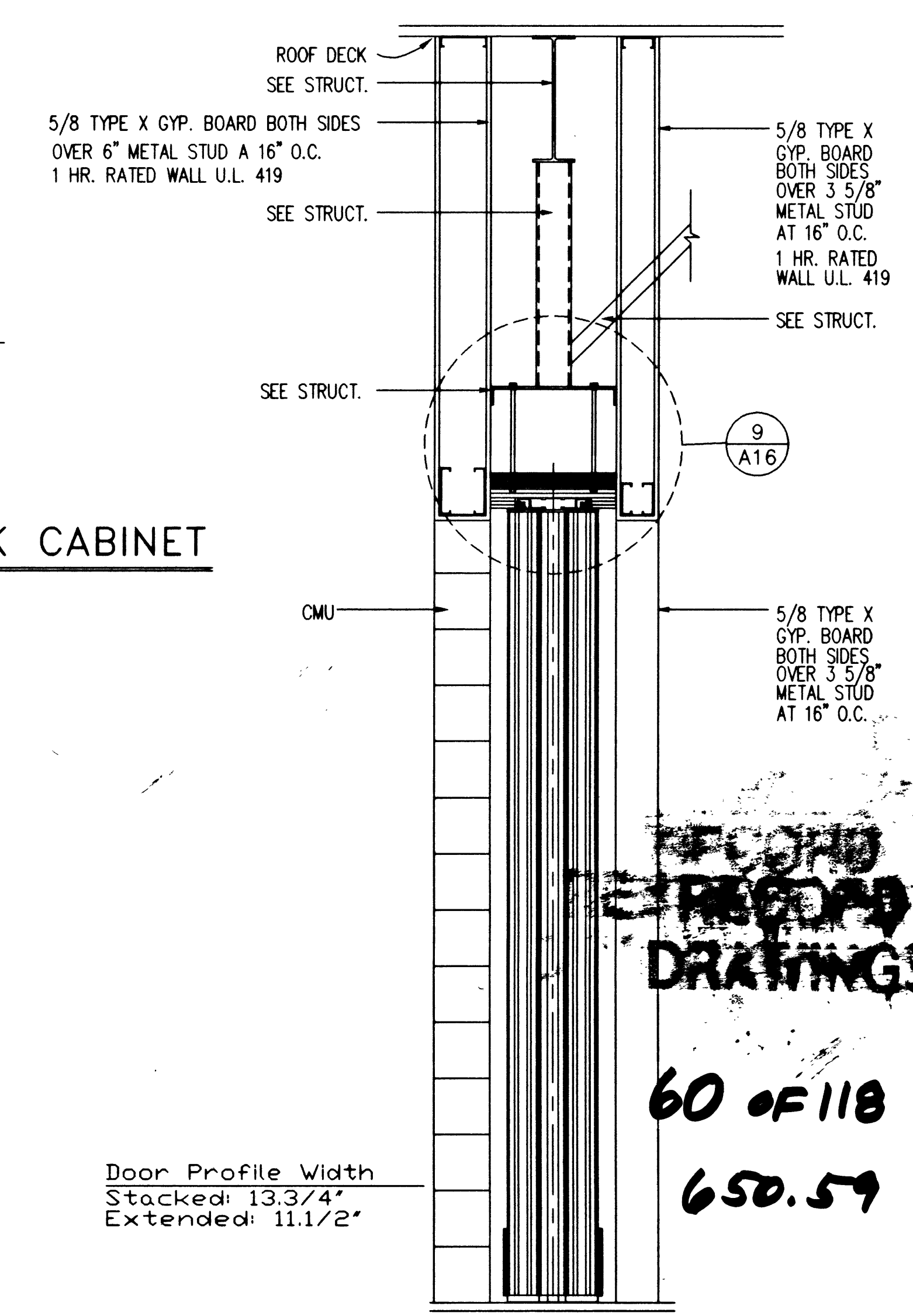
7 ELEVATION @ VENDING 106
A16 SCALE: 1/8" = 1'-0"



8 WONDOR PLAN DETAIL @ VENDING 106
A16 SCALE: 1 1/2" = 1'-0"



9 HEAD DETAIL @ VENDING 106
A16 SCALE: 1 1/2" = 1'-0"



10 WALL SECTION @ VENDING 106
A16 SCALE: 3/4" = 1'-0"

1. Push Plate Exit Device.
2. Floating Jamb assembly.
3. Floating Jamb stops.
4. Blocking.
5. Provide rated construction corresponding to rating required for opening U.L. 419 rated 1 Hr.
6. Push Button Exit Device.
7. Pocket cover doors.

1. 1/2" diameter threaded rod with nuts and washers (18" on center in opening, 18" on center in stack area)
2. Three layers 3/4" x 18" plywood, two layers 5/8" x 18" gypsum board with staggered joints, glued and screwed together at 24"
3. Provide rated construction corresponding to rating required for opening U.L. 419 rated 1 Hr.
4. Motor drive unit (mounted at the back of the pocket)
5. 2 1/4" represents the minimum dimension required to meet UL labeling requirements. The dimension may be increased to further recess the head condition if required.
6. L-shaped trim piece prefinished off white color to match track. Provide transition from track to gypsum soffit.
7. Three layers 1/2" x 3 5/8" gypsum board terminating 14" into pocket. All gypsum to be furnished, finished, and field painted.

Door Profile Width
Stacked: 13 3/4"
Extended: 11 1/2"

60 OF 118
650.59

Any use or reproduction of this document or the attached drawings, or the use of the design approach, ideas or concepts described in this document and the attached drawings, in whole or in part by any person, without the express written approval of the architect or with the specific written consent of HSA Architects, Inc., is hereby prohibited.

DATE	
DESCRIPTION	
REVISION	
WAYNE SCHREINER AIA	THOMAS M. SILVA AIA
1525 WEST CAVEY BLVD. LAS VEGAS, NV 89102 (702) 385-0077 FAX (702) 385-0077	
CITY OF LAS VEGAS DEPARTMENT OF PARK AND LEISURE ACTIVITIES DURANGO RECREATION FACILITY <small>Verify all Dimensions and Conditions at the Site</small>	
Job Title	960901
Date	20 FEB. 1998
Drawn By	CRL
Check	WPS
Sheet	A16
	19 OF 36

27072

650.59