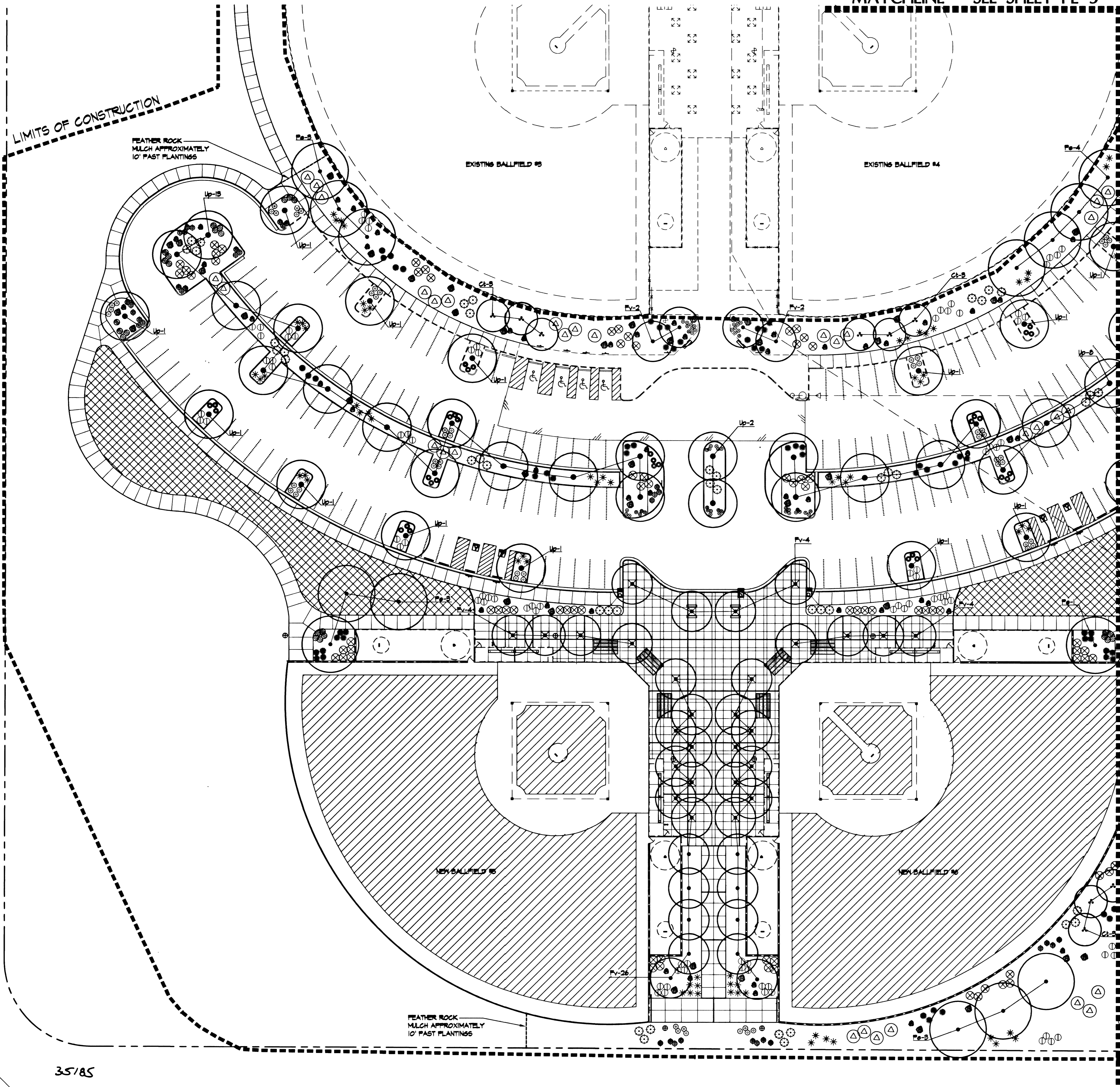


MATCHLINE - SEE SHEET PL-3

LIMITS OF CONSTRUCTION



PLANT SCHEDULE

TREES

KEY	QTY	BOTANICAL NAME	COMMON NAME	SIZE	MIN. SPEC.	REMARK
Aem	0	Acacia smallii	Sweet Acacia	24" Box	8' x 5' x 1"	Multi-trunk
Ae	0	Acacia smallii	Sweet Acacia	24" Box	8' x 4' x 1.5"	Standard
Ch	0	Chitalpa tashkentensis	Chitalpa	24" Box	7' x 4' x 1.25"	Standard
Fv	42	Fraxinus velutina 'Rio Grande'	Pan-Tex Ash	24" Box	10' x 4' x 1.5"	Standard
Pe	16	Pinus eldarica	Mondel Pine	24" Box	10' x 4' x 2"	Standard
Pg	0	Prosopis glandulosa	Honey Mesquite	24" Box	8'x4' x 1.5"	Multi-trunk
Up	0	Ulmus parvifolia	Evergreen Elm	60" Box	22'x 12' x 4.5"	Standard
Up	40	Ulmus parvifolia	Evergreen Elm	24" Box	8'x 4' x 1.25"	Standard
Va	0	Vitex angus-castus	Vitex	24" Box	8'x 4' x 1.25"	Multi-trunk

SHRUBS

25	Calliandra eriophylla	Fairy Duster	5 gal.
46	Chrysoactina mexicana	Damiana	5 gal.
55	Dalea frutescens	Black Dalea	5 gal.
48	Dasyliston wheeleri	Desert Spoon	5 gal.
71	Hesperaloe parviflora	Red Yucca	5 gal.
76	Leucophyllum nevadense 'Sierra Magic' TM	Sierra Magic Ranger	5 gal.
36	Leucophyllum zygophyllum 'Charron' TM	Charron Ranger	5 gal.
54	Muhlenbergia capillaris 'Regal Mist' TM	Regal Mist Deer Grass	5 gal.
38	Yucca recurvifolia	Meeping Yucca	5 gal.

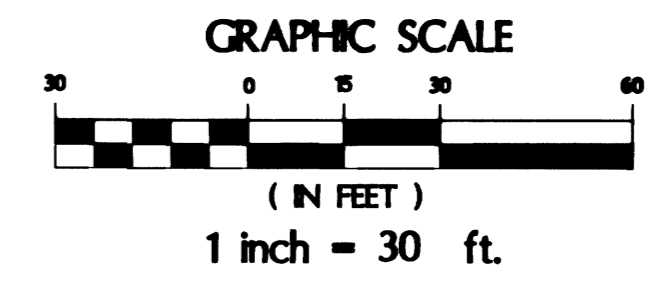
GROUNDCOVER

34	Acacia redolens 'Desert Carpet' TM	Creeping Acacia	5 Gallon
25	Lantana New Gold' TM	New Gold Lantana	5 Gallon

NOTE: QUANTITIES ARE FOR CONTRACTOR REFERENCE ONLY-VERIFY OFF PLANS
 5 GALLON MINIMUM SPEC. - 12" x 12"
 1 GALLON MINIMUM SPEC. - 6" x 6"
 TM - TRADEMARK (REQUIRES TAGS FOR APPROVAL BY LANDSCAPE ARCHITECT)

HYBRID BERBERDA 600 - SEE SPECS SECTION 02415
 FESCUE 600-600 - SEE SPECS SECTION 02415
 8'x4' BOULDER
 3'x3' BOULDER

MATCHLINE - SEE SHEET PL-2



Avoid cutting underground utility lines. It's costly.
Call before you Dig
 1-800-227-2600
 UNDERGROUND SERVICE ALERT (USA)

Avoid overhead power line contact.
Call before you OVERHEAD
 1-702-593-6111
 NEVADA POWER ENVIRONMENT & SAFETY SERVICES DEPARTMENT

NOTE TO CONTRACTOR:
 STANTEC CONSULTING, INC. (STANTEC) HAS ENGINEERED TO PROVIDE ACCURATE UTILITY INFORMATION BASED ON THE MOST CURRENT DATA AVAILABLE. THE CONTRACTOR SHALL VERIFY THE LOCATION OF UTILITIES SHOWN OR NOT SHOWN ON THESE PLANS WITH RESPECT TO LINE AND GRADE PRIOR TO CONSTRUCTION.

Use of the information contained in this document for other than the specific purpose for which it was intended and for other than the client for which it was prepared is forbidden unless expressly permitted in writing in advance by Stantec Consulting, Inc. Stantec Consulting, Inc. does not have any liability for any use of the information without their written consent.



REVISIONS

CONSULTANT

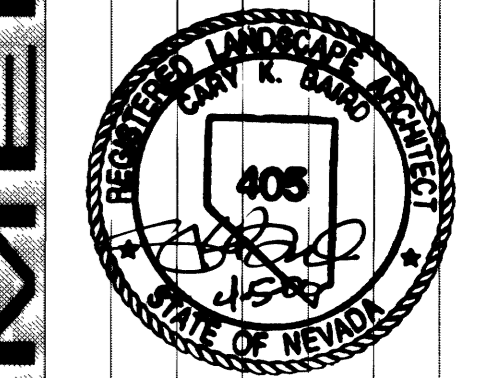
1100 GRIER DRIVE
 LAS VEGAS, NEVADA 89119
 PHONE (702) 361-9050
 FAX (702) 361-0659

Stantec

DEPARTMENT OF PUBLIC WORKS

ELKHORN & DURANGO PARK - PHASE 2

PLANTING PLAN



DEPARTMENT OF PUBLIC WORKS
 ARCHITECTURAL SERVICES

400 EAST STEWART AVENUE
 LAS VEGAS, NEVADA 89101
 PHONE: (702) 229-8535
 FAX: (702) 382-3232
 TDD: (702) 386-9108

PROJECT MANAGER
 CLAIR LEWIS, A.S.L.A.

DRAWN
 CLR

FILE
 8/22/04

DATE
 4/02

SCALE
 1" = 30'-0"

PROJECT
 ELKHORN & DURANGO PARK PHASE 2

SHEET NO
PL-1

SHEET 15 OF 44