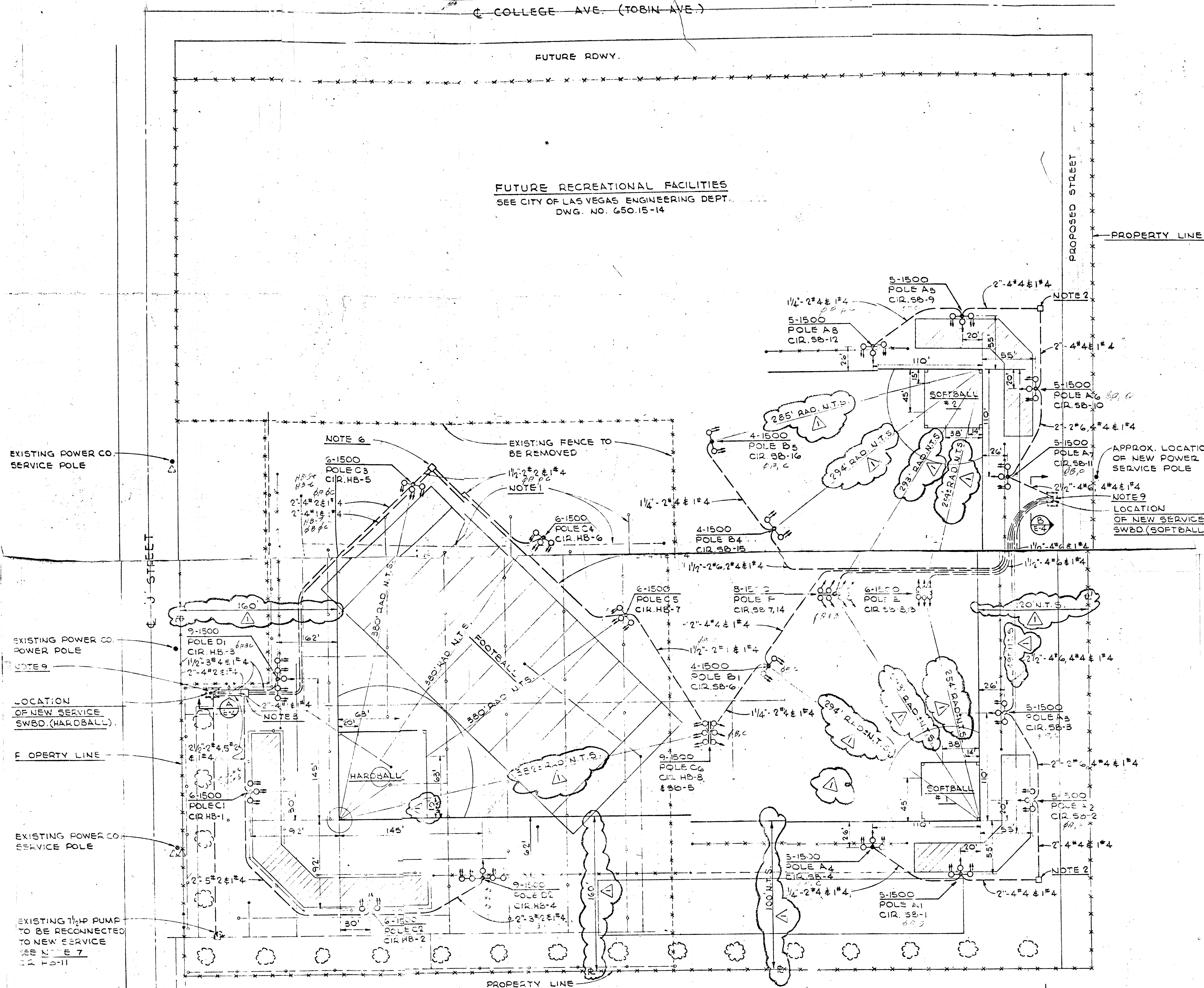


- EXISTING SPRINKLER SYSTEM. CONTRACTOR SHALL USE EXTREME CARE WHEN TRENCHING AND VERIFY LOCATION OF ALL U.G. PIPING. ANY BROKEN WATER SPRINKLERS, PIPE LINES, ECT. SHALL BE REPLACED TO THE SATISFACTION OF THE CITY ENGINEER.
- INSTALL A 15" X 24 1/2" X 12" CONCRETE PULLBOX WITH STANDARD COVER. MARK COVER 'LOW VOLTAGE - FLOODLIGHTING'
- INSTALL A 24" X 24" X 12" CONCRETE PULLBOX WITH STANDARD COVER. MARK COVER 'LOW VOLTAGE - FLOODLIGHTING'
- SEE SHEETS E2 & E3 FOR FLOODLIGHTING DETAILS
- SEE SHEET E4 FOR SCHEDULES OF NEW SERVICE SWITCHBOARDS
- INSTALL A 14" X 14" X 12" CONCRETE PULLBOX WITH STANDARD COVER ADJACENT TO POLE C3 FOUNDATION. MARK COVER 'LOW VOLTAGE - FLOODLIGHTING'
- DISCONNECT EXISTING SPRINKLER PUMP FROM EXISTING SERVICE RE CONNECT TO NEW SERVICE WITH 1 1/4" - 3#6 (24CV-3#)
- AIMING POINTS SHALL BE FURNISHED BY FIXTURE MANUFACTURER.
- STUB OUT 1 1/2" CONDUIT 2' BEYOND FENCE ENCLOSURE @ 18" BELOW GRADE AND CAP FOR FUTURE SCOREBOARD.
- INSTALL ALL CONCRETE PULLBOXES ON A 6" GRAVEL FOUNDATION.

FUTURE RECREATIONAL FACILITIES
SEE CITY OF LAS VEGAS ENGINEERING DEPT.
DWG. NO. 650.15-14



EXISTING POWER CO. SERVICE POLE

EXISTING POWER CO. POWER POLE

LOCATION OF NEW SERVICE SWBD (HARDBALL)

PROPERTY LINE

EXISTING POWER CO. SERVICE POLE

EXISTING 1/2 HP PUMP TO BE RECONNECTED TO NEW SERVICE SEE NOTE 7

MATT KELLY SCHOOL PROPERTY

PLAN
1" = 50'

NOTE:
SOFTBALL DIAMONDS #1 & #2
MOVED TO SOUTH AND WEST.

RAND LPH • JOHNSON • MILLER & ASSOC.
MECHANICAL & ELECTRICAL ENGINEERS
2315 SEVENTH ST. LONG BEACH 4, CALIF.
GORDON L. JOHNSON E.E. NO. 1501

REVISIONS		
MARK	DESCRIPTION	DATE
Δ	RELOCATED SOFTBALL DIAMONDS #1 & #2	7-26-63

CITY OF LAS VEGAS NEVADA
ENGINEERING DEPT.

FLOODLIGHTING FOR DOOLITTLE PARK
(PLAN)

DES.	DATE	SC. (H)
R.M.E.	6-5-63	SC. (M)
DR. L.D.	6-5-63	F.B.K. NO.
CKD. G.J.	6-5-63	P.J.O. NO.
APPROVED BY CITY ENGR.		DRAWING NO.
		650.15-10