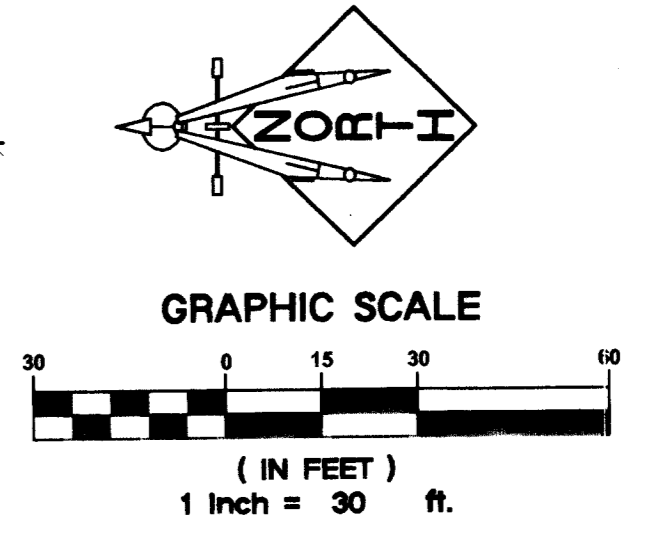
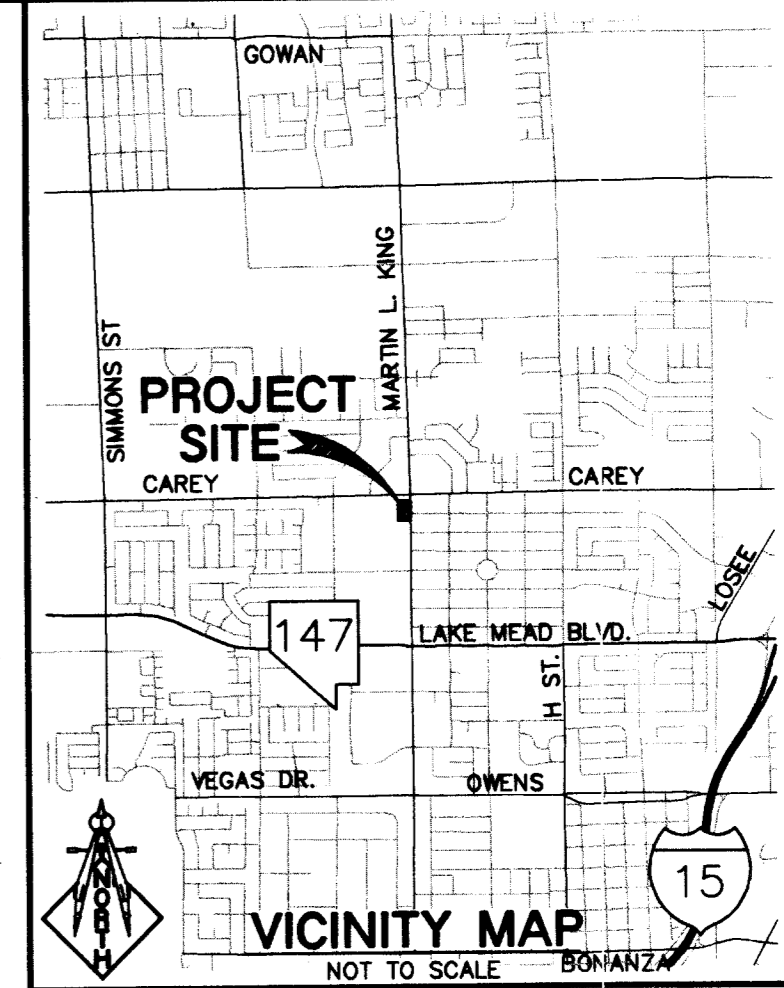
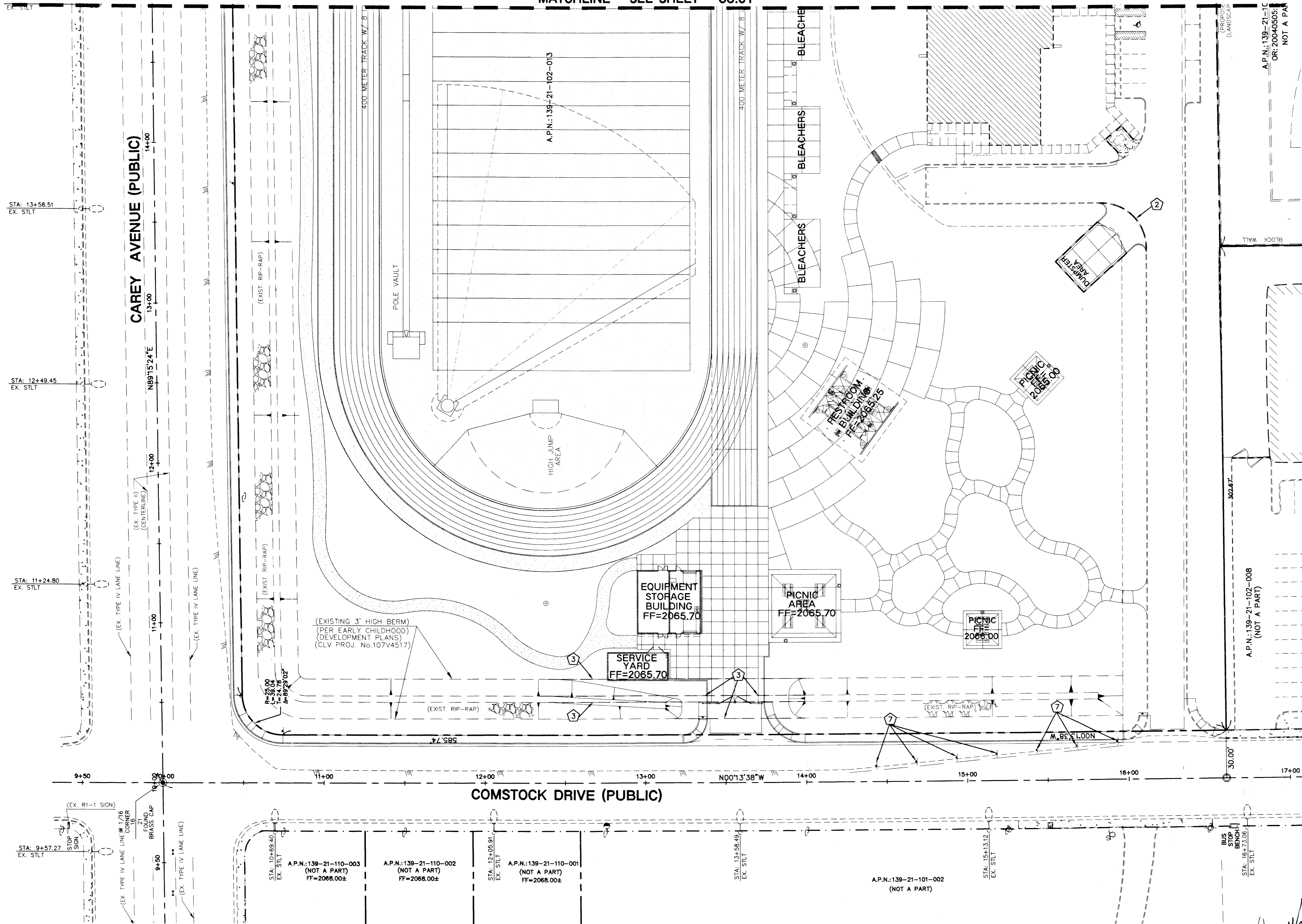


MATCHLINE - SEE SHEET - C6.01



- DEMOLITION NOTES**  
 - NOT ALL NOTES USED ON THIS SHEET -
- 1 EXISTING "L" TYPE CURB AND GUTTER TO BE REMOVED
  - 2 EXISTING "A" TYPE CURB TO BE REMOVED
  - 3 EXISTING PORTION OF BERM TO BE REMOVED
  - 4 EXISTING PORTION OF AC PAVEMENT TO BE REMOVED.
  - 5 EXISTING RIP-RAP TO BE REMOVED
  - 6 EXISTING WALK TO BE REMOVED
  - 7 EXISTING SIGNS TO BE REMOVED

**A.P.N.:**  
 139-21-102-013

**BASIS OF BEARINGS:**  
 THE BASIS OF BEARINGS FOR THIS SURVEY IS THE NORTH LINE OF THE NORTHEAST QUARTER (NE 1/4) OF THE NORTHWEST QUARTER (NW 1/4) OF SECTION 21, TOWNSHIP 20 SOUTH, RANGE 81 EAST, M.D.M., CITY OF NORTH LAS VEGAS, CLARK COUNTY, NEVADA, AS SHOWN BY THAT MAP ON FILE IN FILE 05 OF PARCEL MAPS, PAGE 94 IN THE CLARK COUNTY RECORDER'S OFFICE, CLARK COUNTY, NEVADA.

SAID LINE BEARS NORTH 89°13'24" EAST.

**BENCHMARK:**  
 CLV BM NO. 2LV01214  
 BEING A RIVET AND PLATE IN THE TOP OF CURB AT THE SOUTHEAST CORNER OF CAREY AND MARTIN LUTHER KING  
 ELEVATION: 2058.60 FEET / 627.4635 METERS  
 (NAVD '88 DATUM)

**NOTE:**  
 LOCHSA ENGINEERING ASSUMES NO RESPONSIBILITY FOR EXISTING UTILITY LOCATIONS AND ELEVATIONS. THE UTILITIES SHOWN ON THIS DRAWING ARE FROM THE BEST AVAILABLE INFORMATION. IT IS THE CONTRACTOR'S RESPONSIBILITY TO FIELD VERIFY THE LOCATION AND ELEVATION OF ALL UTILITIES, INCLUDING BUT NOT LIMITED TO, THE WATER, FIRE, SANITARY SEWER, STORM SEWER, TELEPHONE, POWER, GAS, AND IRRIGATION LINES PRIOR TO THE COMMENCEMENT OF CONSTRUCTION. IF CONFLICT EXISTS IN THE FIELD, THE CONTRACTOR IS TO NOTIFY THE PROJECT ARCHITECT, OWNER'S REPRESENTATIVE, AND THE PROJECT ENGINEER IMMEDIATELY.

DATE:	09-25-07
DESIGNED BY:	CRW
CHECKED BY:	GM
PROJECT NO.:	061015
SCALE:	1"=30'

**LOCHSA ENGINEERING**  
 DR. WILLIAM U. PEARSON  
 PARK  
 CITY OF LAS VEGAS

*(A.K.A. M.L.K. AND CAREY PARK)*

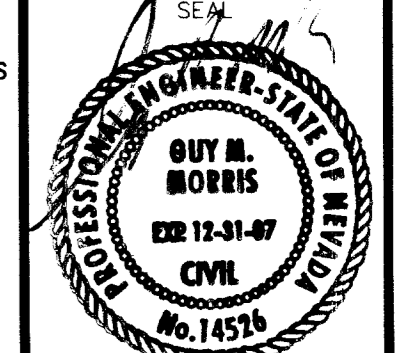
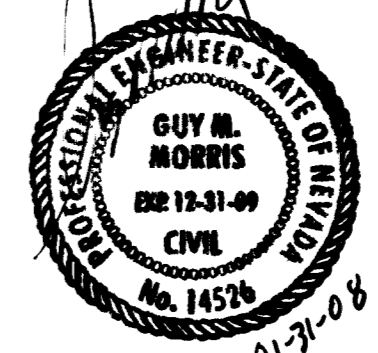
**DEMOLITION PLAN**  
**SHEET-1**

**DR. WILLIAM U. PEARSON**  
 PARK  
 CITY OF LAS VEGAS

**SAFETY ALERT**  
 Call before you Dig  
 1-800-227-2800

**PROFESSIONAL ENGINEER - STATE OF NEVADA**  
 GUY M. MORRIS  
 No. 14574  
 01-27-08

CL OR SURVEY LINE	EASEMENT LINE	HEAVY AC PVMT.	DESCRIPTION:	CONTOUR LINES	EDGE OF PAVEMENT	"A" TYPE CURBS	"L" TYPE CURBS	WALLS	FENCES	AC PAVEMENT	CONCRETE	SPOT ELEVATIONS	SIGNS	MANHOLE W/ DESCRIPTION	MANHOLE DESCRIPTIONS	FIRE HYDRANTS	GATE VALVES	REDUCERS	CLEAN OUTS	METERS AND PULLBOXES	100w HPS STREETLIGHTS	150w HPS STREETLIGHTS	200w HPS STREETLIGHTS	250w HPS STREETLIGHTS	
PROPERTY LINE	SAWCUT LINE	LIGHT AC PVMT.	EXISTING:	---	(22'10)							(12.34) BC		⊙	⊙ = SANITARY SEWER ⊙ = STORM DRAIN ⊙ = ELECTRICAL										



H #21045 1-800-227-2800

1-702-593-6111

SHEET 11 OF 14

C6.02

DRAWING No. 650-107