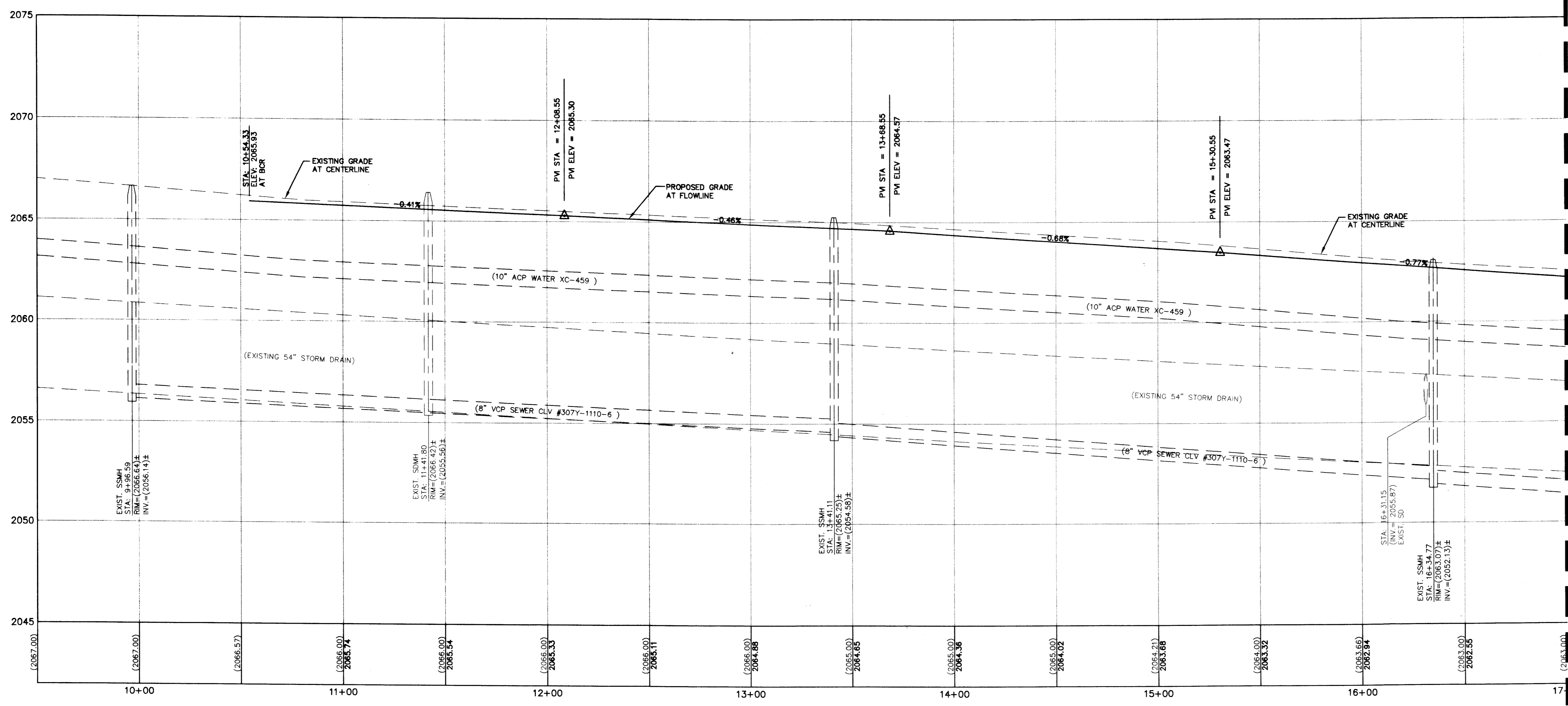


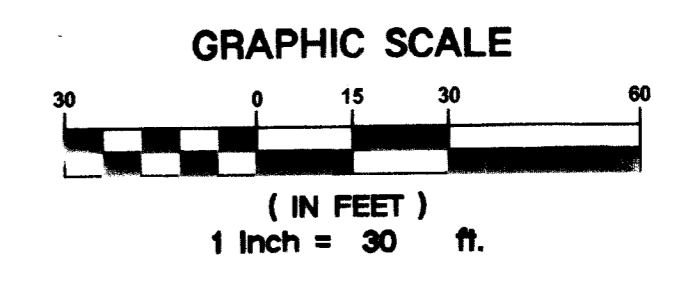
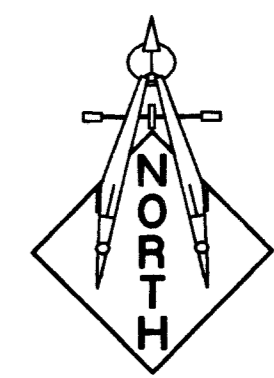
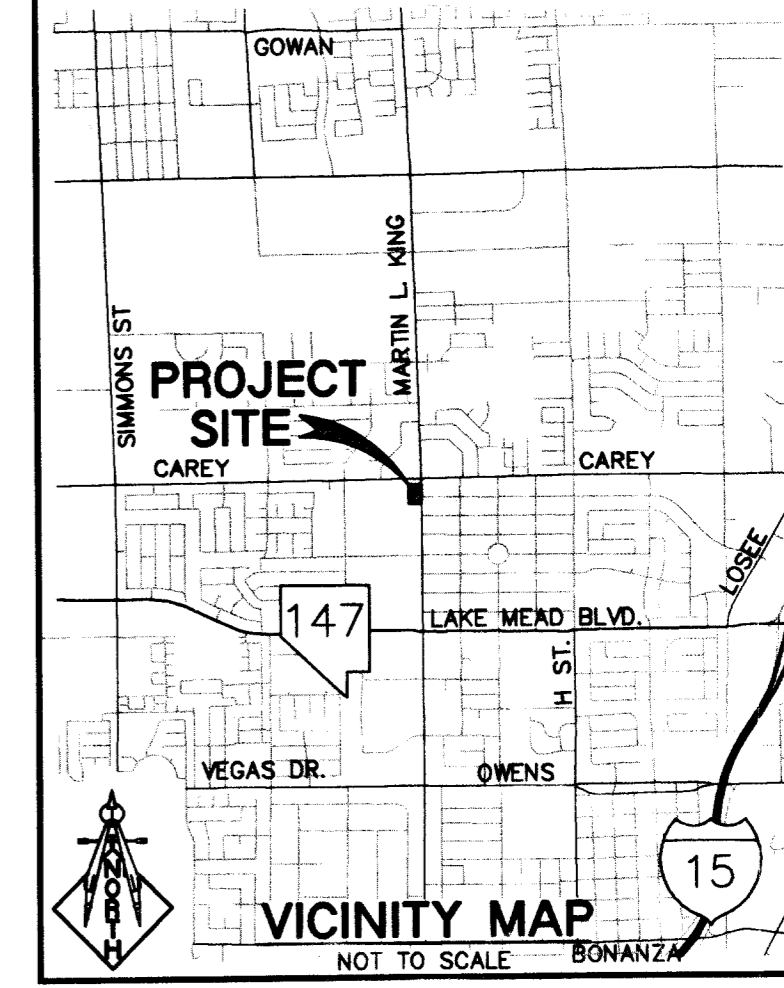
CAREY AVENUE - PLAN
SCALE: 1" = 30'

MATCHLINE - STA. 17+00.00
SEE SHEET C7.03



CAREY AVENUE - PROFILE
HORIZ. SCALE: 1" = 30'
VERT. SCALE: 1" = 3'

MATCHLINE - STA. 17+00.00 - SEE SHEET C7.03



NOTE:
FOR GRADING CONSTRUCTION NOTES SEE UTILITY PLANS SHEET C3.01 AND C3.02

NOTE:
FOR UTILITY CONSTRUCTION NOTES SEE UTILITY PLANS SHEET C4.01 AND C4.02

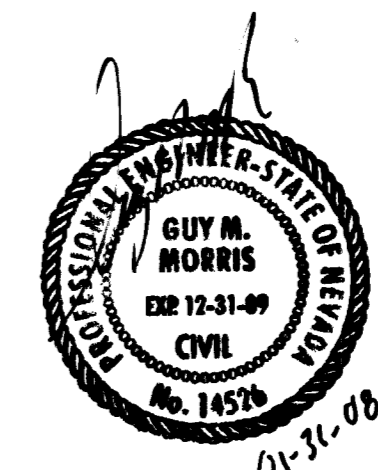
A.P.N.:
139-21-102-013

BASIS OF BEARINGS:
THE BASIS OF BEARINGS FOR THIS SURVEY IS THE NORTH LINE OF THE NORTHEAST QUARTER (NE 1/4) OF THE NORTHEAST QUARTER (NW 1/4) OF SECTION 21, TOWNSHIP 20 SOUTH, RANGE 61 EAST, M.D.M., CITY OF NORTH LAS VEGAS, CLARK COUNTY, NEVADA, AS SHOWN BY THAT MAP ON FILE IN FILE 05 OF PARCEL MAPS, PAGE 94 IN THE CLARK COUNTY RECORDER'S OFFICE, CLARK COUNTY, NEVADA.

SAID LINE BEARS NORTH 89°13'24" EAST.

BENCHMARK:
CLV BM NO. 2LW0121M4
BEING A RIVET AND PLATE IN THE TOP OF CURB AT THE SOUTHEAST CORNER OF CAREY AND MARTIN LUTHER KING ELEVATION: 2058.60 FEET / 627.4635 METERS (NAVD '88 DATUM)

NOTE:
LOCHSA ENGINEERING ASSUMES NO RESPONSIBILITY FOR EXISTING UTILITY LOCATIONS AND ELEVATIONS. THE UTILITIES SHOWN ON THIS DRAWING ARE FROM THE BEST AVAILABLE INFORMATION. IT IS THE CONTRACTOR'S RESPONSIBILITY TO FIELD VERIFY THE LOCATION AND ELEVATION OF ALL UTILITIES, INCLUDING BUT NOT LIMITED TO, THE WATER, FIRE, SANITARY SEWER, STORM SEWER, TELEPHONE, POWER, GAS, AND IRRIGATION LINES PRIOR TO THE COMMENCEMENT OF CONSTRUCTION. IF CONFLICT EXISTS IN THE FIELD, THE CONTRACTOR IS TO NOTIFY THE PROJECT ARCHITECT, OWNER'S REPRESENTATIVE, AND THE PROJECT ENGINEER IMMEDIATELY.



**CITY OF LAS VEGAS
FIRE DEPARTMENT APPROVAL**

BY: *[Signature]* DATE: 9/27/07

APPROVAL OF THESE PLANS SHALL NOT BE CONSTRUED TO BE A PERMIT FOR, OR AN APPROVAL OF, ANY VIOLATION OF ANY OF THE PROVISIONS OF THE STATE OR COUNTY LAWS, FIRE FLOW 1,500 GPM AT 20 P.S.I. RESIDUAL.

APPROVED FOR CONSTRUCTION

LAS VEGAS VALLEY WATER DISTRICT DATE: _____

SAFETY ALERT
Call before you Dig
Call Before You Overhead

H #21045 1-800-227-2600 1-702-593-6111

PROJECT SITE	CAREY
VICINITY MAP	NOT TO SCALE
REV. DATE: BY:	DESCRIPTION:

LOCHSA ENGINEERING
6345 SOUTH JONES BOULEVARD SUITE 100
LAS VEGAS, NV 89118
PHONE: (702) 365-9312, FAX: (702) 365-9317

engineer Dekker Perich Sabatini
interiors planning engineering
1 Holmes Sabatini Way
Henderson, Nevada 89014
dps@lochsa.com

CAREY AVENUE PLAN AND PROFILE	SHEET
DR. WILLIAM U. PEARSON PARK CITY OF LAS VEGAS	DATE: 09-25-07
	DATE: 09-25-07
	DATE: 09-25-07
	SCALE: 1"=30'

LEGEND	CL OR SURVEY LINE	EASEMENT LINE	HEAVY AC PWMT.	DESCRIPTION:	CONTOUR LINES	EDGE OF PAVEMENT	"A" TYPE CURBS	"L" TYPE CURBS	WALLS	FENCES	AC PAVEMENT	CONCRETE	SPOT ELEVATIONS	SIGNS	MANHOLE W/ DESCRIPTION	MANHOLE DESCRIPTIONS	FIRE HYDRANTS	GATE VALVES	REDUCERS	CLEAN OUTS	METERS AND PULLBOXES	100W HPS STREETLIGHTS	150W HPS STREETLIGHTS	200W HPS STREETLIGHTS	250W HPS STREETLIGHTS	
	PROPERTY LINE	SAWCUT LINE	LIGHT AC PWMT.	EXISTING:	(2210)	(2210)							(12.54) RC		⊙	⊙	⊙	⊙	⊙	⊙	⊙	⊙	⊙	⊙	⊙	⊙
	ROW LINE	SCARP LINE	CONCRETE PWMT.	PROPOSED:	(2210)	(2210)							(12.54) RC		⊙	⊙	⊙	⊙	⊙	⊙	⊙	⊙	⊙	⊙	⊙	

PROFESSIONAL ENGINEER STATE OF NEVADA
GUY M. MORRIS
02-12-31-07
No. 14576

SHEET No. **C7.02**
SHEET 13 of 14
DRAWING No. **650.102**