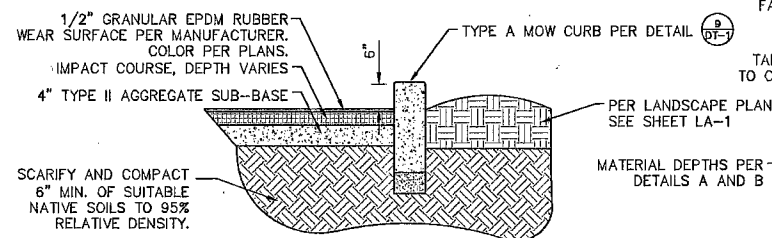
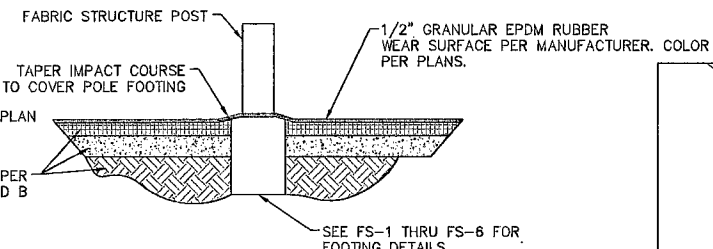


A TOT LOT SAFETY SURFACE
DETAIL N.T.S.



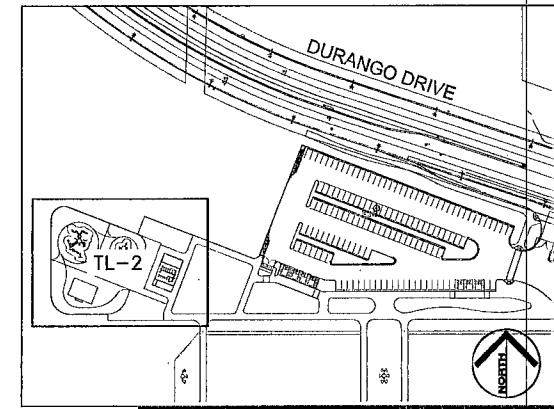
B TOT LOT SAFETY SURFACE
DETAIL N.T.S.



C TOT LOT SAFETY SURFACE
DETAIL N.T.S.

NOTES:

1. DEPTH OF SBR CUSHION COURSE SHALL MEET OR EXCEED ASTM F1292 AND STM 355 FOR IMPACT ATTENUATION. SEE SPECIFICATIONS.
2. INSTALL PER MANUFACTURE'S RECOMMENDATIONS AND SPECIFICATIONS.



KEY MAP
NTS

BASIS OF BEARINGS

NORTH 02°07'20" EAST BEING THE WEST LINE OF THE NORTHEAST QUARTER (NE 1/4) OF SECTION 29, TOWNSHIP 19 SOUTH, RANGE 60 EAST, M.D.M. AS SHOWN ON PARCEL MAP FILE 77, PAGE 98 OF OFFICIAL RECORDS, CLARK COUNTY, NEVADA.

BENCHMARK

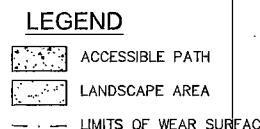
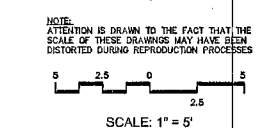
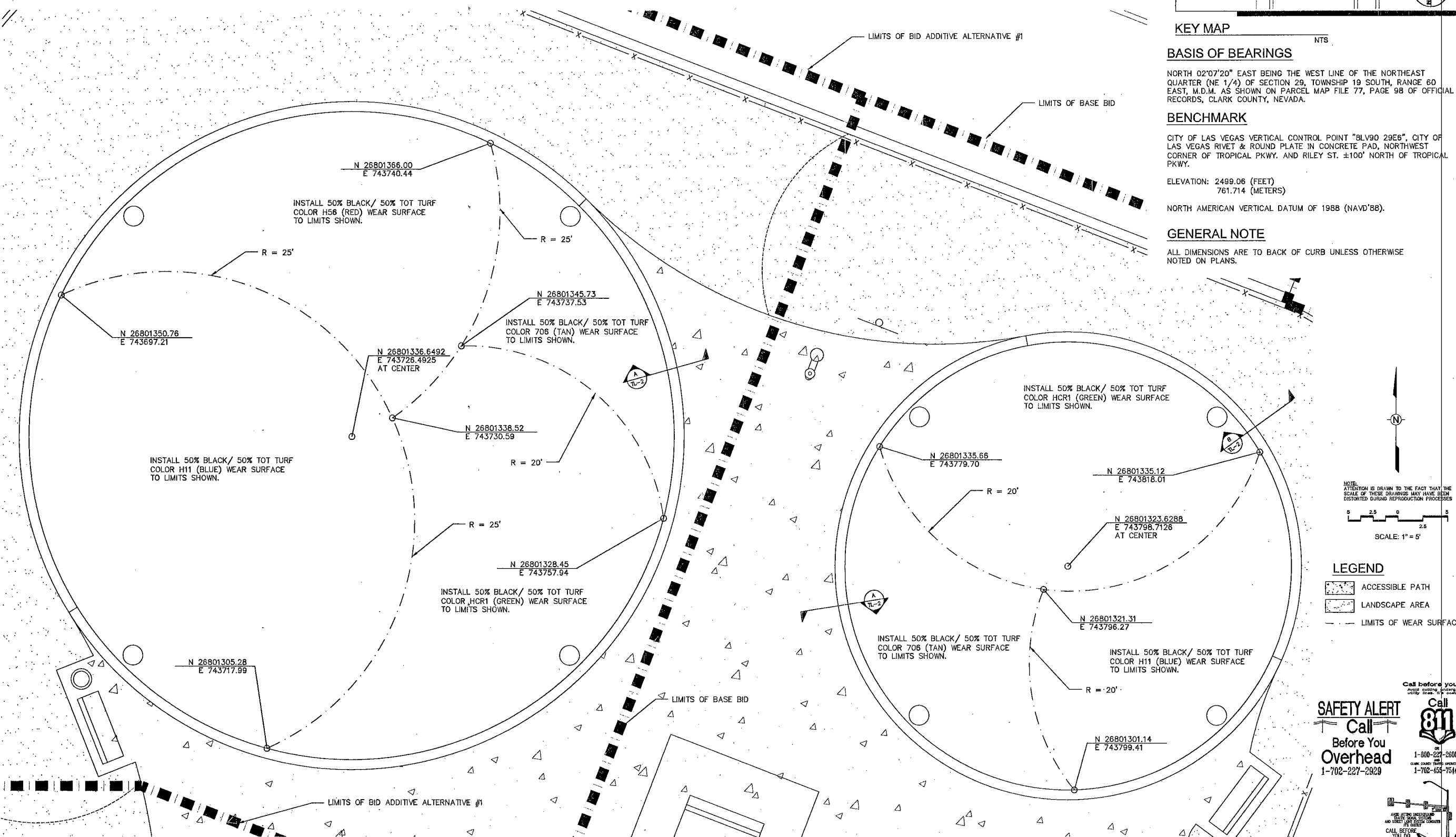
CITY OF LAS VEGAS VERTICAL CONTROL POINT "BLV90 29E8", CITY OF LAS VEGAS RIVET & ROUND PLATE IN CONCRETE PAD, NORTHWEST CORNER OF TROPICAL PKWY. AND RILEY ST. ±100' NORTH OF TROPICAL PKWY.

ELEVATION: 2499.06 (FEET)
761.714 (METERS)

NORTH AMERICAN VERTICAL DATUM OF 1988 (NAVD'88).

GENERAL NOTE

ALL DIMENSIONS ARE TO BACK OF CURB UNLESS OTHERWISE NOTED ON PLANS.



SAFETY ALERT
Call Before You Overhead
1-702-227-2929

Call 811
1-800-227-2929
CLARK COUNTY PUBLIC UTILITIES
1-702-455-7544

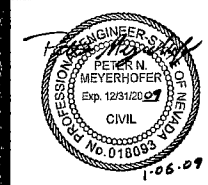
Call Before you UnderGround
1-702-229-6931
CITY OF LAS VEGAS PUBLIC UTILITIES AND
1-702-432-5300
FREEMAN AND ARDEN SYSTEMS OF TRANSPORTATION



REVISIONS

CONSULTANT
Kimley-Horn and Associates, Inc.
2000 E. Flamingo Blvd., Suite 210, Las Vegas, NV 89119
Ph: 702-794-8866 Fax: 702-794-8869

DURANGO RILEY PARK PHASE II
6105 N. Durango Dr.
SAFETY SURFACE



OWNER: CITY OF LAS VEGAS
DEPARTMENT OF PUBLIC WORKS
ARCHITECTURAL SERVICES

400 EAST STEWART AVENUE
LAS VEGAS, NEVADA 89102
PHONE: (702) 229-6525
FAX: (702) 384-4846
TDD: (702) 386-9108

DATE: DECEMBER 2008
SCALE: 1/8"
DSD NO: 08.15341.15
CLV DWS NO: 650.100-2
H#28200
SHEET NO: TL-2

AS-BOLTS