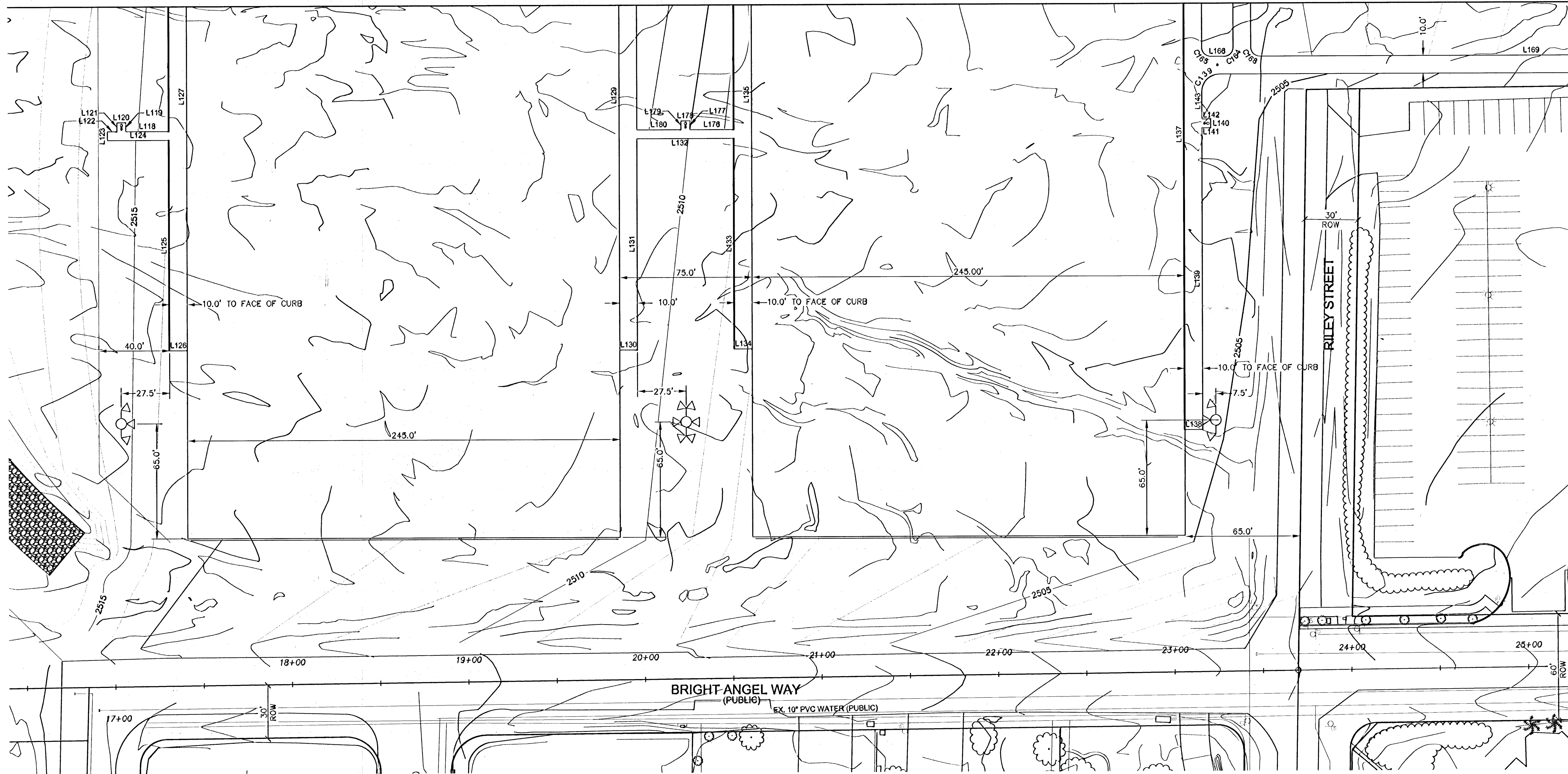


MATCHLINE SEE SHEET HC-1



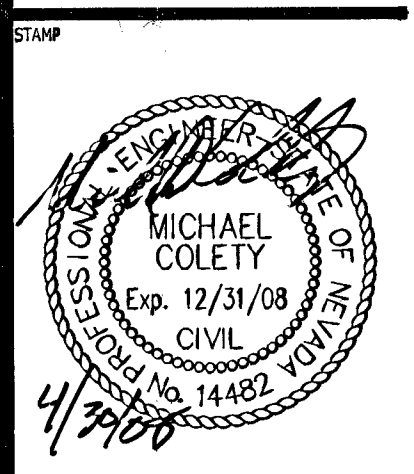
SEE SHEET HC-3



REVISIONS

CONSULTANT
Kimley-Horn and Associates, Inc.
 Engineering, Planning, and Environmental Consultants
 2000 E. Flamingo Road, Suite 210, Las Vegas, NV 89119
 Ph: (702) 734-6666 Fax: (702) 734-6666

DURANGO/RILEY PARK PHASE I
 NE CORNER OF EL CAPITAN AND BRIGHT ANGEL
 HORIZONTAL CONTROL
 SIGNING AND MARKING



OWNER: CITY OF LAS VEGAS
 DEPARTMENT OF PUBLIC WORKS
 ARCHITECTURAL SERVICES

100 EAST STEWART AVENUE
 LAS VEGAS, NEVADA 89101
 PHONE: (702) 229-6335
 FAX: (702) 384-4846
 TDD: (702) 384-9108

DRAWN: JLM/MS
 FILE: _____
 DATE: APRIL 2008
 SCALE: 1:30
 BID NO: 071534116
 CIVL DWG NO: 650.100
 H# 26759
 SHEET NO: HC-2

LIMITS OF CONSTRUCTION

ALL CONSTRUCTION ACTIVITY SHALL BE WITHIN APN 125-29-601-024, 125-29-502-030, 125-29-502-028, 125-29-502-022, 125-29-502-021 AND 125-29-503-009 AND CONSTRUCTION ACTIVITY SHALL BE RESTRICTED TO NOT GO BEYOND 50 FEET FROM PROPOSED IMPROVEMENTS, AND SHALL NOT EXTEND BEYOND THE PROPERTY LINE, EXCEPT FOR AUTHORIZED OFF-SITE AND UTILITY-LINE IMPROVEMENTS.

LEGEND

■ SIGHT VISIBILITY ZONE

SIGNAGE AND STRIPING NOTES

1. INSTALL "STOP" SIGN R1-1 (24"x24"). EXACT LOCATION OF SIGN TO BE DETERMINED BY FIELD ENGINEER.
2. INSTALL 24" WIDE WHITE STOP BAR PER CCAUSD No. 254A.
3. INSTALL VAN ACCESSIBLE HANDICAP SIGNAGE AND SIDE LOADING HANDICAP SIGN PER DETAIL (1/07-3)
4. INSTALL "HANDICAP" SIGN PER DETAIL (1/07-3)
5. INSTALL 4" WIDE WHITE SOLID PARKING STRIPE.
6. INSTALL HANDICAP PARKING PAVEMENT MARKER, PER DETAIL (1/07-3)
7. INSTALL HANDICAP "NO PARKING" SIGN PER DETAIL (1/07-3)
8. INSTALL "ARROW" AND "ONLY" SYMBOLS. SYMBOLS SHALL BE APPROVED TYPE I PAVEMENT MARKING FILM.
9. INSTALL 12 INCH WHITE CROSSWALK LINE PER CCAUSD No. 254.
10. INSTALL DEDICATION PLAQUE MONUMENT PER DETAIL (1/07-3)

BASIS OF BEARINGS

NORTH 02°07'20" EAST BEING THE WEST LINE OF THE NORTHEAST QUARTER (NE 1/4) OF SECTION 29, TOWNSHIP 19 SOUTH, RANGE 80 EAST, M.D.M. AS SHOWN ON PARCEL MAP FILE 77, PAGE 98 OF OFFICIAL RECORDS, CLARK COUNTY, NEVADA.

BENCHMARK

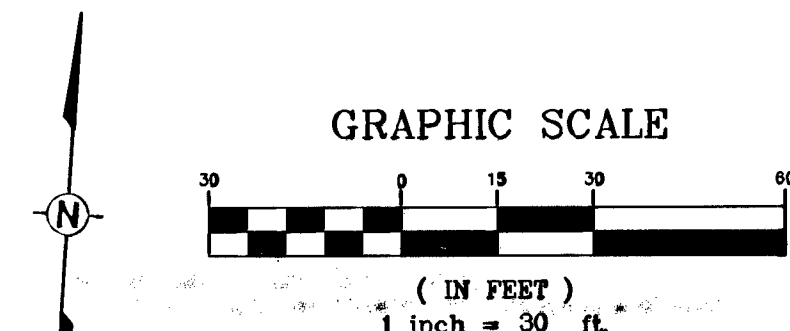
CITY OF LAS VEGAS VERTICAL CONTROL POINT "8LV90 29E8", CITY OF LAS VEGAS RIVET & ROUND PLATE IN CONCRETE PAD, NORTHWEST CORNER OF TROPICAL PKWY. AND RILEY ST. ±100' NORTH OF TROPICAL PKWY.

ELEVATION: 2499.08 (FEET)
 761.714 (METERS)

NORTH AMERICAN VERTICAL DATUM OF 1988 (NAVD'88).

GENERAL NOTE

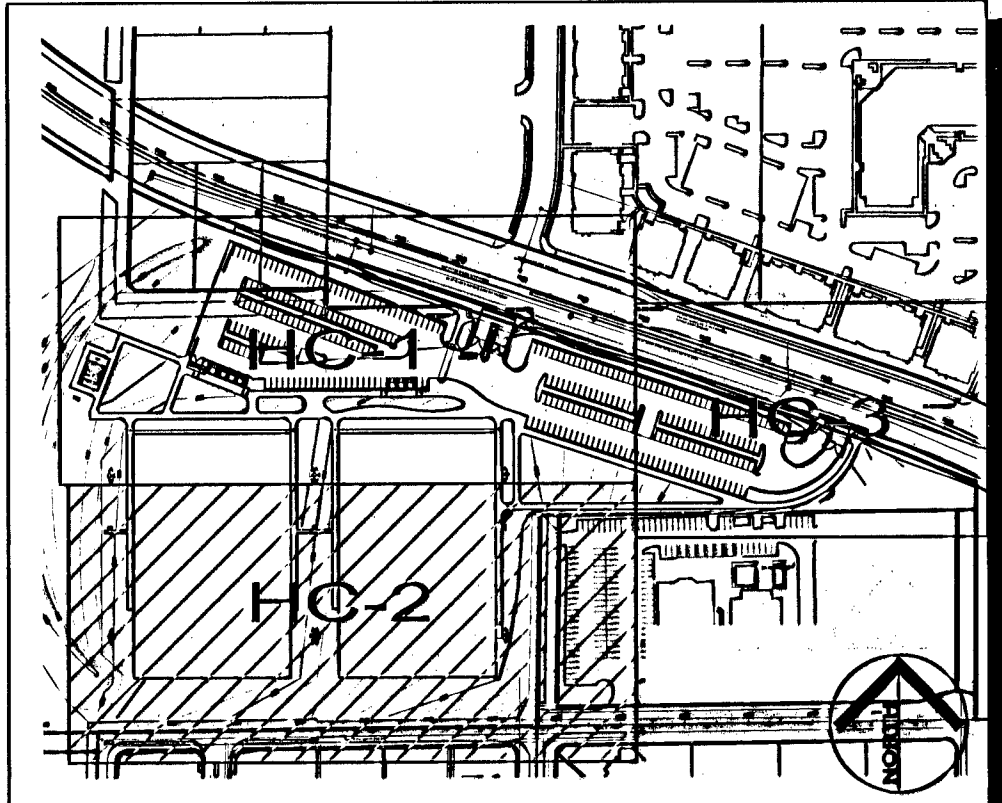
ALL DIMENSIONS ARE TO BACK OF CURB UNLESS OTHERWISE NOTED ON PLANS.



SAFETY ALERT
 Call Before You Overhead
 1-702-229-6331
 1-702-227-2929



1-800-227-2800
 1-702-432-5300
 1-702-455-7544



KEY MAP
 NOT TO SCALE

Apr 30, 2008 - 2:36pm - USER: marcus.bush
 K:\Roadway\062256\015 DurangoRiley Park\CAAD\256015HC.dwg

111476