

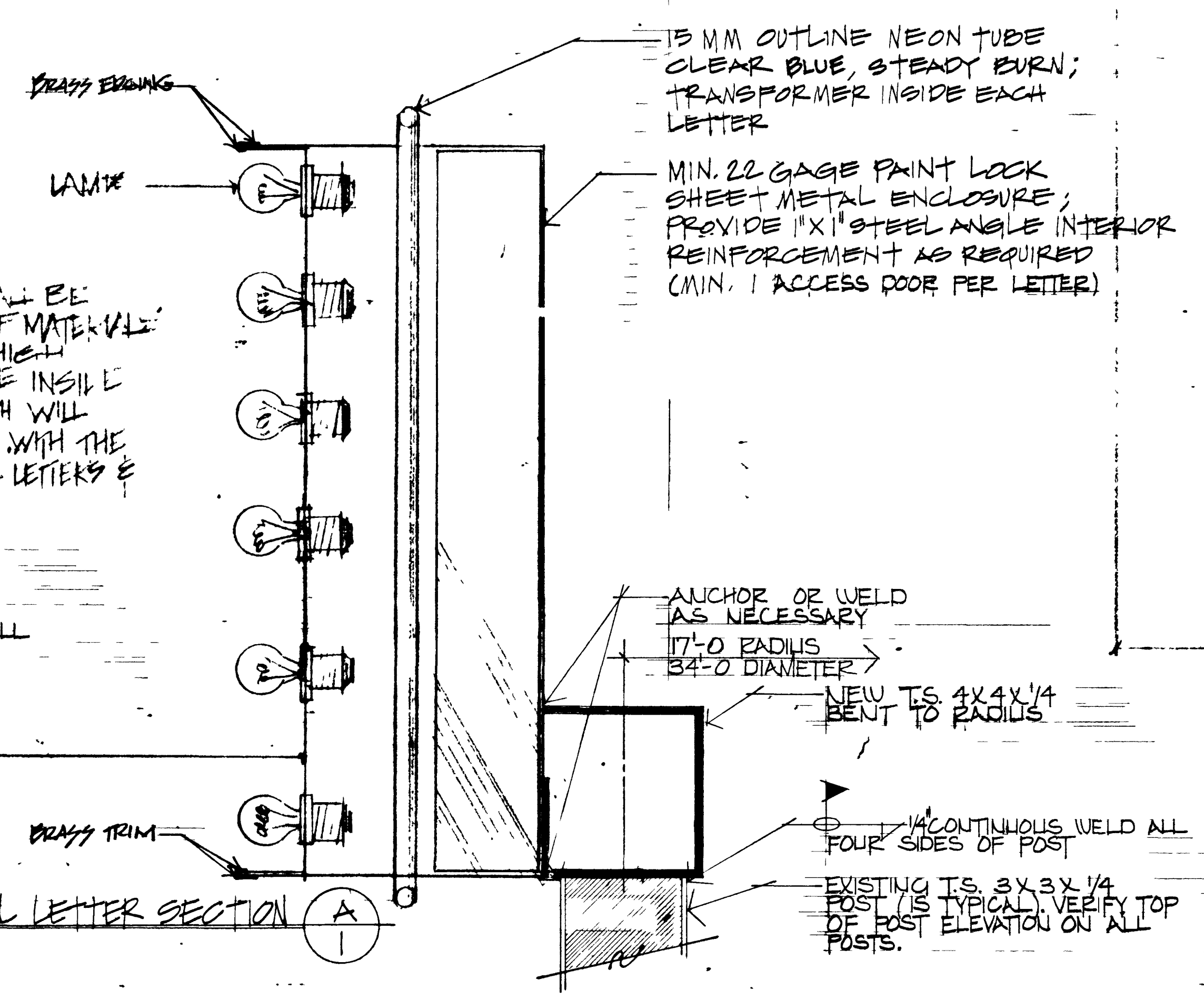
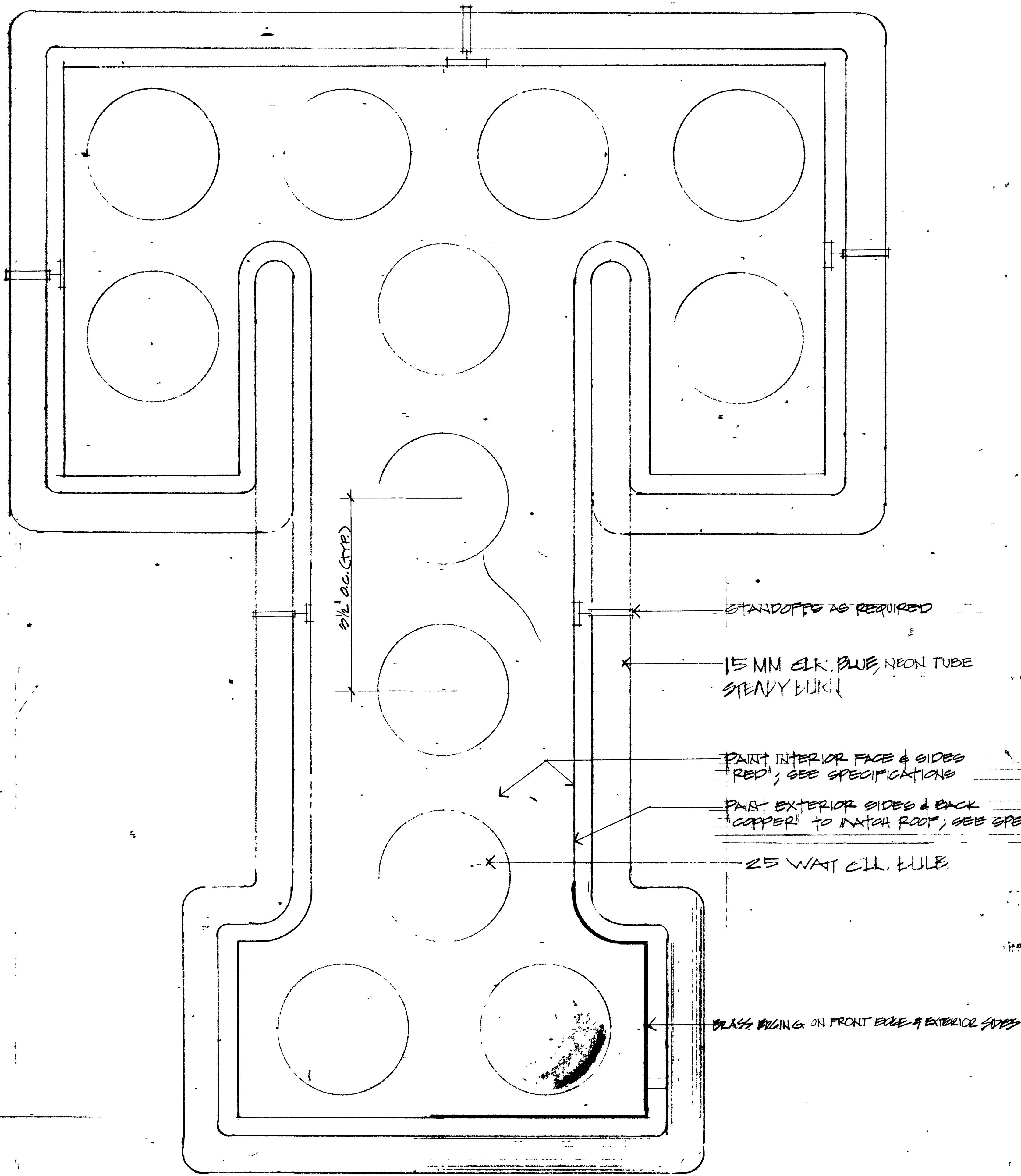
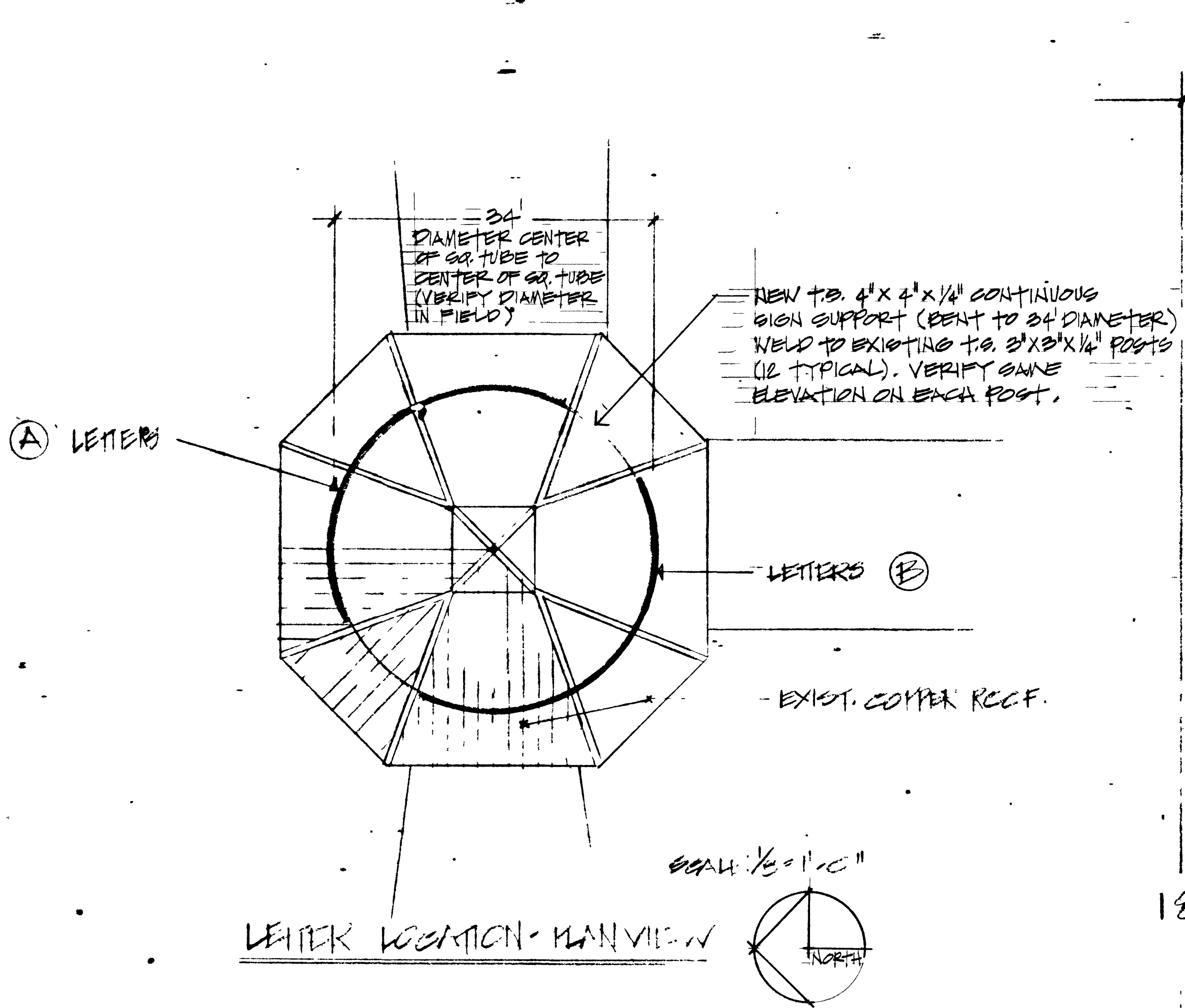
36'-3"
STRETCH-CUT DIMENSION

30-13-2

DOWNTOWN TRANSPORTATION CENTER

SCALE 1/2" = 1'-0"

① & ② 1/2" S.F.T.S. BLUE FILLED NEON OUTLINE BOX CHANNEL LETTER.
MOUNT TO T.S. BENT TO RADIUS BY WELDING &/OR CLIPS AS REQUIRED
ALL LTR'S. H.H.D. RED INCLT; SEE SPECIFICATIONS
ENGLING & LTR. BACKS THIN COPPER TO MATCH EXISTING ROOF; SEE SPECIFICATIONS
INSTR. LTR. ILLUM. W/ 25 WATT CLK. BULBS, STAY ON, OUTLINE LTR'S. W/ STEADY BURN
CHINE CLK. NEON 15MM. LTR'S. MOUNTED CH.T.S. BENT TO RADIUS; PAINT TO MATCH EXISTING ROOF



NOTE:
INDIVIDUAL ILLUM. LETTERS SHALL BE INSTALLED USING FIRE FREE MATERIALS OF AN APPROVED TYPE, SUPPLY HIGH TENSION CONDUCTORS SHALL BE INSIDE OF CONDUIT OR FLEX CONDUIT WHICH WILL BE CONNECTED FROM LTR. TO LTR. WITH THE CONNECTORS FASTENED ON THE LETTERS & THE TRANSFORMER BOX.
ELECTRIC LOAD TO BE SUPPLIED BY CONTRACTOR AND APPROVED BY BUILDING AND SAFETY.
CONTRACTOR TO PROVIDE PHOTO CELL AS REQUIRED TO OPERATE ALL LETTERS.

LETTER FACE

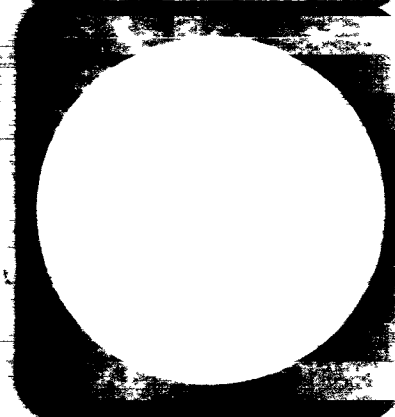
TYPICAL BOX CHANNEL LETTER SECTION ①
NOT TO SCALE

TYPICAL LETTER - ACTUAL SIZE



City of Las Vegas, Nevada
Department of Design and Development
Thomas B. Graham, AICP, PLA, Director

DESIGN BY	DATE
REVISIONS	



DOWNTOWN TRANSPORTATION CENTER SIGN PLAN & DETAILS

PROJECT NO.
DRAWING NO.
SHEET OF

590-2N

