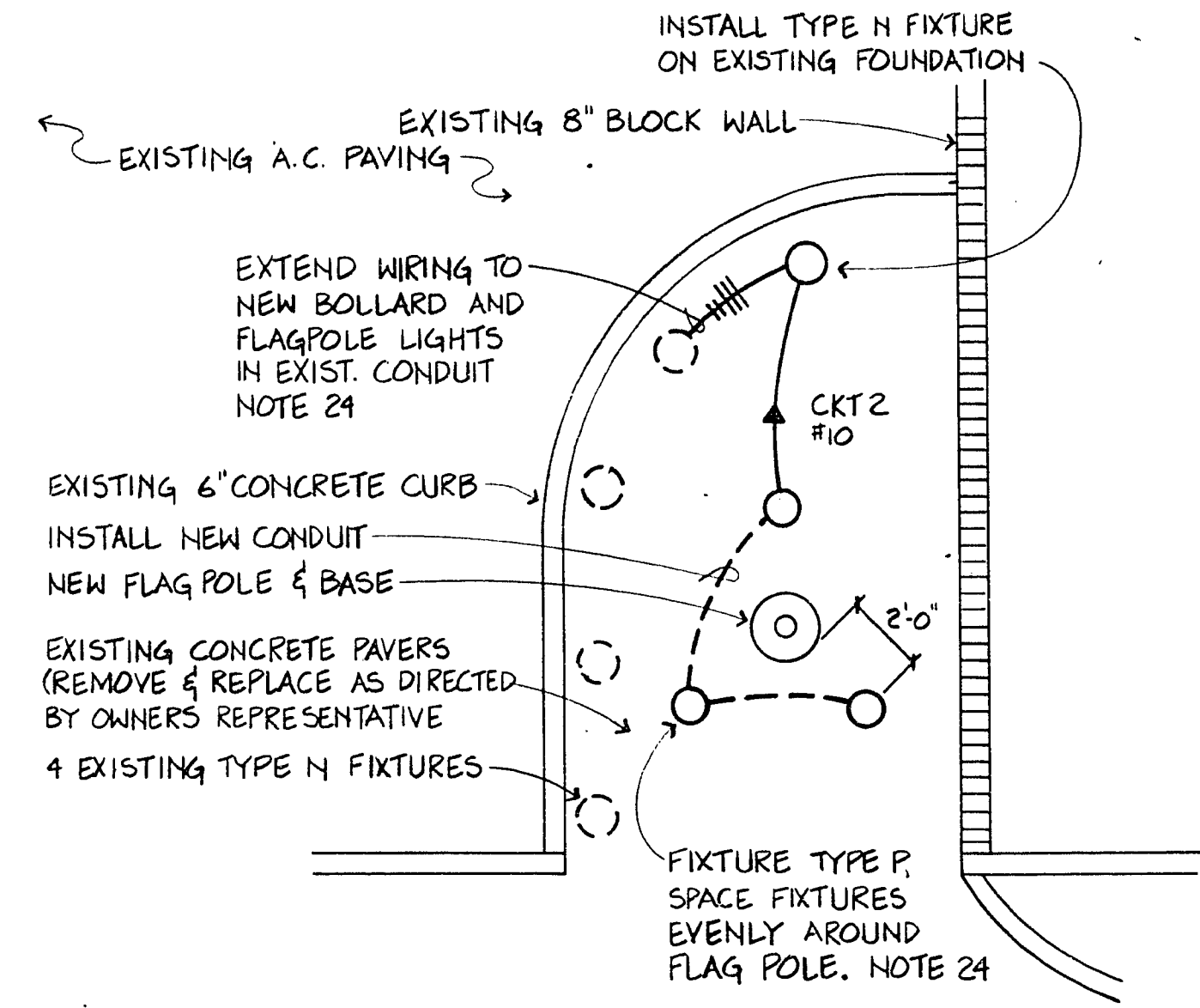


LEGEND

- LIGHTING FIXTURE
- LIGHTING FIXTURE
- LIGHTING FIXTURE
- ⊞ NEON BALLAST TRANSFORMER
- △ SPEAKER
- ⊞ PULL BOX
- ⊞ CONTROL PANEL
- ⊞ TIME CLOCK
- ⊞ DIMMER SWITCH

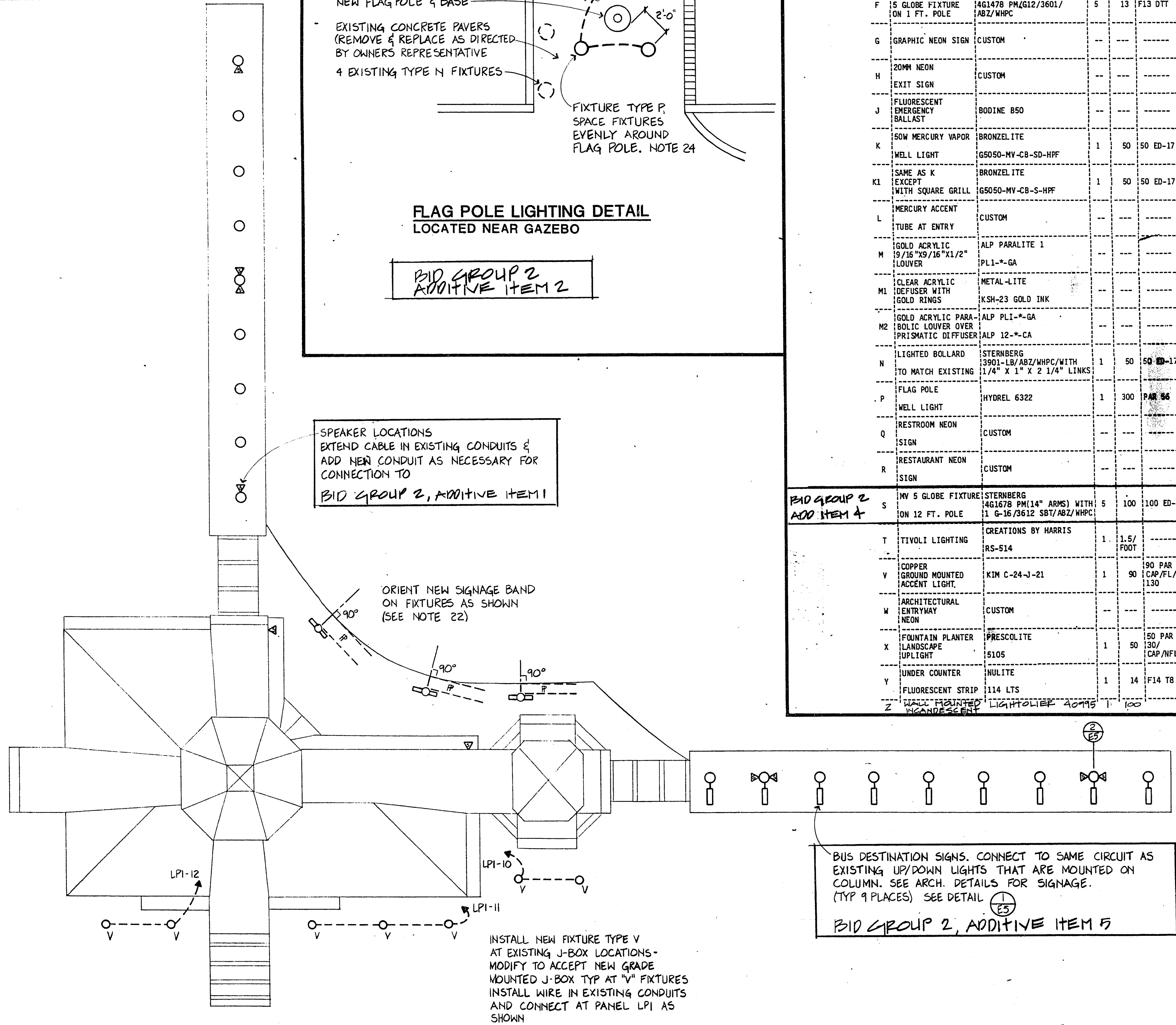


**FLAG POLE LIGHTING DETAIL
LOCATED NEAR GAZEBO**

BID GROUP 2
ADDITIVE ITEM 2

SPEAKER LOCATIONS
EXTEND CABLE IN EXISTING CONDUITS &
ADD NEW CONDUIT AS NECESSARY FOR
CONNECTION TO
BID GROUP 2, ADDITIVE ITEM 1

ORIENT NEW SIGNAGE BAND
ON FIXTURES AS SHOWN
(SEE NOTE 22)



BUS DESTINATION SIGNS. CONNECT TO SAME CIRCUIT AS
EXISTING UP/DOWN LIGHTS THAT ARE MOUNTED ON
COLUMN. SEE ARCH. DETAILS FOR SIGNAGE.
(TYP 9 PLACES) SEE DETAIL 1-E5
BID GROUP 2, ADDITIVE ITEM 5

LIGHTING FIXTURE SCHEDULE

FIXT ID	TYPE	MANUFACTURER AND CATALOG NO.	NO.	LAMPS	WATTS	TYPE	CKT	REMARKS AND MOUNTING
A	WALL MOUNTED PL FLUORESCENT	LIGHTOLIER 5793	1	9	190T	120		LAMP AND BALLAST TO BE COMPATIBLE WITH B.
B	FLUORESCENT	BODINE	---	---	---	120		CONNECT TO FIXTURE A.
C	EMERGENCY BALLAST 120 VOLT 1500VA	EM 120NE9 DUAL-LITE	---	---	---	120		FOR NEON EXIT SIGNS
D	INVERTOR	#1500LCSAC-1 SPECTRON	---	---	---	120		SEE MOUNTING DETAIL
E	PL FLUORESCENT 5 GLOBE (12") FIXT. ON 10 FT. POLE	STERBERG #41478PM/G12/3610-SBT/ABZ/WHPC	5	13	F13 DTT	120		FIXTURE TO BE TAPPED FOR SIGNAGE BRACKET.
F	LOW VOLTAGE TRACK	PRESCOLITE TLC-2 BL/PB T10	2	42	Q/FL(EY)P	120		WITH T35 BL MONOPOINT & P15LVB DIMMER.
G	PL FLUORESCENT 5 GLOBE FIXTURE ON 1 FT. POLE	STERBERG #41478PM/G12/3601/ABZ/WHPC	5	13	F13 DTT	120		SEE ARCH. FOR MOUNTING DETAIL.
H	GRAPHIC NEON SIGN	CUSTOM	---	---	---	120		SEE ARCH. FOR SHAPE REQUIRED.
I	20MM NEON EXIT SIGN	CUSTOM	---	---	---	120		LETTER SIZE PER UL 924. SEE NOTE 14.
J	FLUORESCENT EMERGENCY BALLAST	BODINE 850	---	---	---	120		INSTALL IN EXISTING FIXTURE.
K	150W MERCURY VAPOR WELL LIGHT	BRONZELITE GS050-MV-CB-S0-HFF	1	50	50 ED-17	120		RELOCATE CONDUITS. FIXTURE TO BE FLUSH IN PLANTER.
L	WELL LIGHT	BRONZELITE	---	---	---	120		SAME AS K
M	EXCEPT WITH SQUARE GRILL MERCURY ACCENT	GS050-MV-CB-S-HFF	1	50	50 ED-17	120		
N	TUBE AT ENTRY	CUSTOM	---	---	---	120		SEE ARCHITECTURAL SHEET NO.
O	GOLD ACRYLIC 19/16 "X9/16"X1/2" LOUVER	ALP PARALITE 1 PLI-K-GA	---	---	---	120		*APPROXIMATELY 6" WIDE NOMINAL, SEE DETAIL 1-E2.
P	CLEAR ACRYLIC DEFUSER WITH GOLD RINGS	METAL-LITE KSH-23 GOLD INK	---	---	---	120		*APPROXIMATELY 6" WIDE NOMINAL, SEE DETAIL 2-E2.
Q	GOLD ACRYLIC PARABOLIC LOUVER OVER PRISMATIC DIFFUSER	ALP PLI-K-GA ALP PLI-K-GA	---	---	---	120		*APPROXIMATELY 6" WIDE NOMINAL, SEE DETAIL 3-E2.
R	LIGHTED BOLLARD TO MATCH EXISTING	STERBERG 3901-LB/ABZ/HPC WITH 1/4" X 1" X 2 1/4" LINKS	1	50	50 ED-17	120		MOUNT ON EXISTING FOUNDATION 2 - CHAIN LOOPS
S	FLAG POLE	HYDREL 6322	1	300	PAR 86	120		CONTRACTOR TO FURNISH 2 AND INSTALL 3 FLUSH WITH PAVERS
T	RESTROOM NEON SIGN	CUSTOM	---	---	---	120		SEE ARCHITECTURAL SEE NOTE 26.
U	RESTAURANT NEON SIGN	CUSTOM	---	---	---	120		SEE ARCHITECTURAL CONNECT TO SIGNAGE CIRCUIT
V	MV 5 GLOBE FIXTURE ON 12 FT. POLE	STERBERG #41678 PM(14" ARMS) WITH 1 G-16/3612 SBT/ABZ/WHPC	5	100	100 ED-17	120		NOTE 29
W	TIVOLI LIGHTING	CREATIONS BY HARRIS RS-514	1	1.5/FOOT	---	120		NOTE 28 ON 4 INCH CENTERS MET LISTED
X	COPPER GROUND MOUNTED ACCENT LIGHT	KIM C-24-J-21	1	90	90 PAR 38 CAP/FL/130	120		REPLACE EXISTING J-BOX WITH GROUND MOUNTED J-BOX.
Y	ARCHITECTURAL ENTRYWAY NEON	CUSTOM	---	---	---	120		SEE ARCHITECTURAL NOTE 25.
Z	FOUNTAIN PLANTER LANDSCAPE UPLIGHT	PRESCOLITE 5105	1	50	50 PAR 38 CAP/NFL	120		PAINT LENSE GUARD AS DIRECTED BY ARCHITECT. 6 REQ'D.
	UNDER COUNTER	MULLITE	1	14	F14 T8	120		
	FLUORESCENT STRIP	114 LTS	---	---	---	120		
	WALL MOUNTED FLUORESCENT	LIGHTOLIER 5793	1	90	---	120		SEE SHEET A12

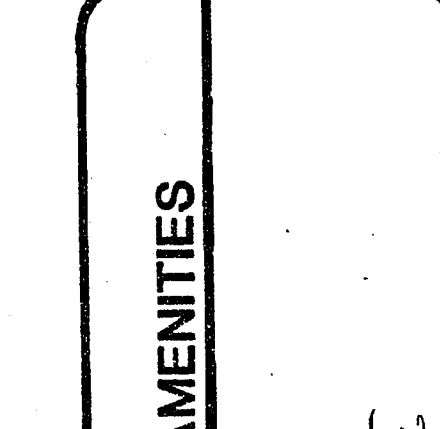
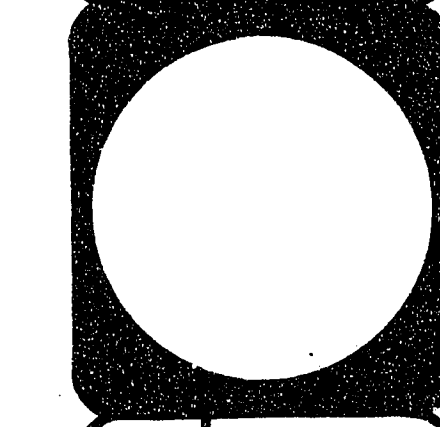
GENERAL NOTES

- Remove existing fixture and replace with type A fixture.
- Mount a 4 X 4 X 8 cabinet and install fluorescent battery pack for fixture A within. Extend wiring to fixture A for back-up battery operation of light.
- Remove light switch and replace with blank brass cover plate.
- Remove existing globe fixtures at ceiling and return to owner. Attach a brass canopy plate without knockout over J-Box.
- Mount battery inverter in mechanical room above. Reroute and reconnect circuit LP2-24 for exit lights through inverter. Coordinate location in mechanical room with owner's representative.
- See Architectural drawings for mounting detail. Mount dimmer in cove above, out of line of sight. Provide filtered vents for venting of heat from lights.
- Add access door and mount ballast for neon signs in void area between floors. For details see Architectural Drawings.
- All conduit to be concealed unless noted otherwise or by special permission of the Architect.
- Connect Ballasts and Neon Electrodes with flexible aluminum conduit exposed in bottom of planter and painted to match. Conceal conduit where it leaves planter for homerun to LP1. Provide secondary ballast wiring per manufacturers requirements. Estimated load is 360 VA per transformer. Verify load before commencing work.
- Update and retype all panel schedules.
- All conduit runs are shown with 3 #12 in 1/2 inch minimum size conduit unless noted otherwise.
- Provide conduit and wiring only from behind ticket counter for addition of under counter lights.
- Replace lowers in fixtures with ALP Paralite 1 Cat. # PL1-14SP-GA Gold. Paint frame of fixture to match ceiling.
- Conceal wiring and mount ballast behind soffit above exit. See Architectural Drawings.
- Install photoelectric smoke detector in electrical room. Add smoke detector module and power supply to existing notifier fire alarm panel. Add relay and wiring to fire alarm panel and extend wiring for supervised alarm transmitter to be located at TTB. Alarm transmitter to be furnished by others.
- Relocate Thermostat on same wall as directed by Architect in field. Intercept conduit above ceiling and extend down wall at new location. Abandon conduit at old thermostat location.
- Disconnect wiring and cut back conduits. Lower pull box flush with surrounding planter fill. Reconnect wiring and seal ends of conduit with Duct Seal.
- Remove 8 150W lamps and return to owner. Install 8 50W Par 20/CAP/NSP lamps and aim as per Architects direction.
- Replace existing breakers in panel with ground fault circuit interrupters.
- Reconnect outlets to circuit 36 only. Spare out circuit 35 for use on fountain equipment.
- Pull additional conductors in conduit and reconnect as shown.
- Install sign band on existing fixture. Place ballasts in base of pole and connect to same circuit. For sign details see Architectural Drawings.
- See Architectural details for type L fixture location and mounting, connect to signage circuit.
- Connect additional Type N fixture to existing circuit 3. Pull new circuit 2 back through existing conduit to panel next to gazebo. Replace 3 pole contactor with a 4 pole contactor. Install 20A breaker at panel.
- Install wiring for all neon arch bands, neon ellipse, and neon signs in existing conduits. Connect signs, murals and neon ballasts to circuits as noted on drawings.
- Locate ballast in lighting soffit and connect to same circuit.
- See Specification Section 16400 for electrical work.
- Install Tivoli lighting over all surfaces as noted on the Architectural Drawings A12-A13. Conduit homeruns to panels and conduit between J-boxes is existing. Approximate J-Box locations are noted on the drawings. Contractor shall install all lighting, wiring, transformers, conversion modules if required and additional conduit to complete the Tivoli installation. Estimated transformer load is 7000 W. The contractor shall notify the owner if the proposed installation exceeds 7000 W on panel LP-1. Use circuits 35 thru 39 for branch circuit feeds to transformers. Entire lighting installation shall be "suitable for wet locations". Paint all exposed conduits and equipment to match existing structure. All exposed conduits shall be approved by the Owner's Representative prior to installation.
- Provide two type S fixtures and deliver to owner at owners yard.
- Remove existing light switches, extend J-Box as necessary and install Lutron Athena # T-1000 Dimmers. (4 required)
- Provide a 4" cabinet fan to remove heat from interior of mural equal to Radio Shack # 273-241.
- See Detail 1-E5 and 2-E5 for mounting of speakers on top of column.
- Mount speaker to a 6" X 6" X 3" wide X 1/8" thick L bracket mounted next to J-Box. Fasten to wall with lead shields and lag screws with leg of bracket behind speaker.
- See detail 3-E5 for sound/paging equipment.
- Mount speakers to top of soffit.



City of Las Vegas, Nevada
Department of Design and Development
 Thomas B. Graham, AICP, RIA, Director
 DESIGN BY: TJK
 SCALE: 1"=8'
 DRAWN BY: JDE

NO.	DATE	REVISIONS



**DOWNTOWN TRANSPORTATION CENTER AMENITIES
 EXTERIOR ELECTRICAL PLAN,
 GENERAL NOTES & FIXTURE SCHEDULE**

30-15-41
1/15-08