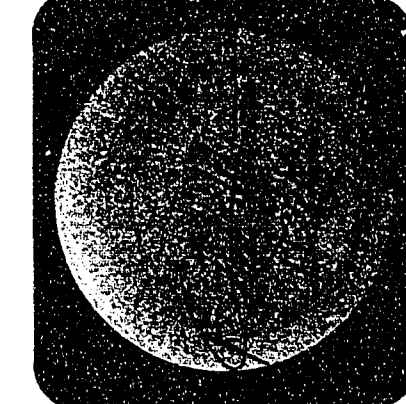




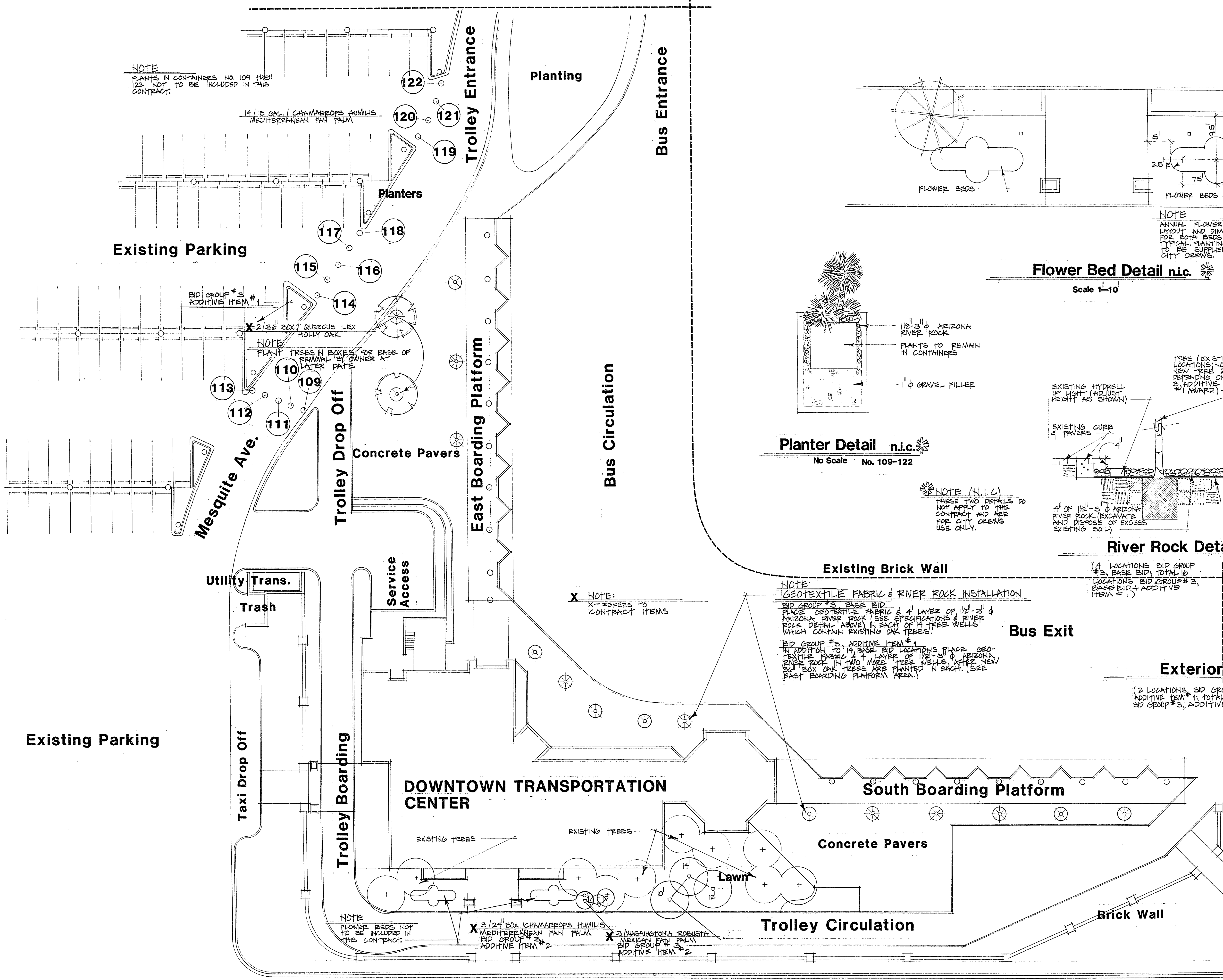
City of Las Vegas, Nevada
Department of Design and Development
 Thomas B. Graham, AICP, RLA, Director

NO.	DATE	REVISIONS



DOWNTOWN TRANSPORTATION CENTER AMENITIES
 Exterior Landscape Plan & Details

PROJECT NO.
WU9040
 DRAWING NO.
590-2F
 SHEET 34 OF 41
L2



NOTE
 PLANTS IN CONTAINERS NO. 109 THRU 122 NOT TO BE INCLUDED IN THIS CONTRACT.

14 1/2 GAL / CHAMBAEROPS HUMILIS
 MEDITERRANEAN FAN PALM

BID GROUP #3
 ADDITIVE ITEM #1

NOTE
 PLANT TREES IN BOXES FOR BASE OF REMOVAL BY OWNER AT LATER DATE

Mesquite Ave.

Trolley Drop Off

Utility Trans.
 Trash

Service Access

Trolley Boarding

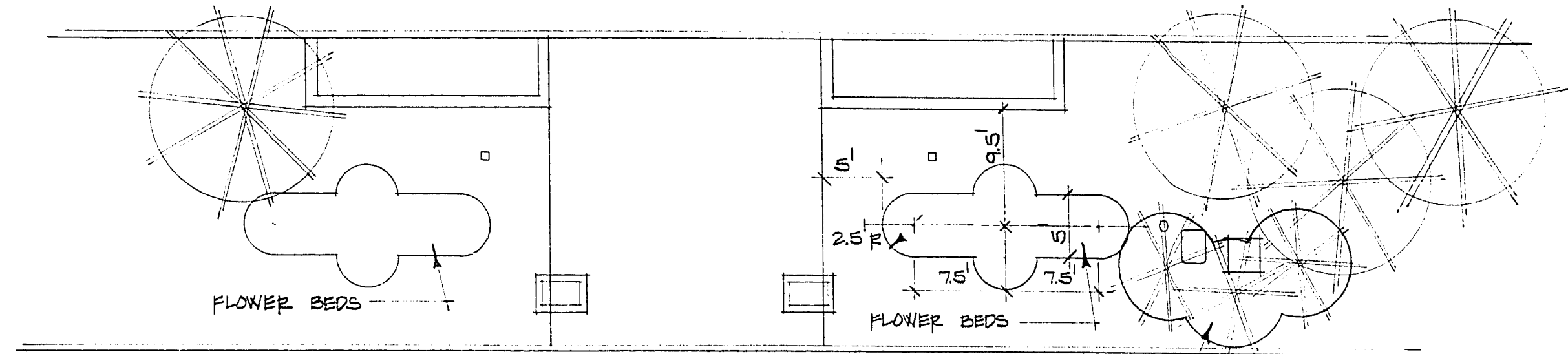
DOWNTOWN TRANSPORTATION CENTER

NOTE
 FLOWER BEDS NOT TO BE INCLUDED IN THIS CONTRACT.

3 1/2" BOX / CHAMBAEROPS HUMILIS
 MEDITERRANEAN FAN PALM
 BID GROUP #3
 ADDITIVE ITEM #2

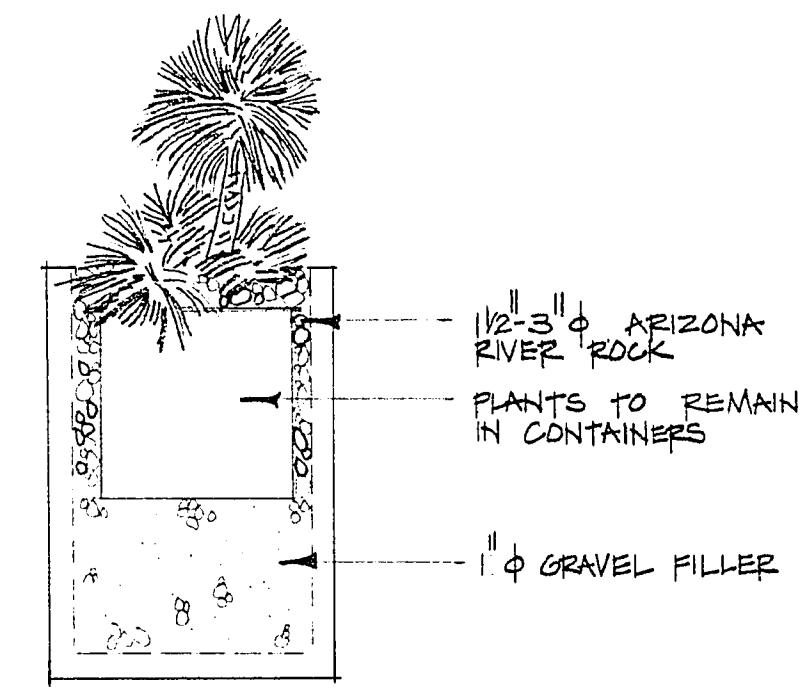
3 NAGAIPTONIA ROBUSTA
 MEDITERRANEAN FAN PALM
 BID GROUP #3
 ADDITIVE ITEM #2

Casino Center Boulevard

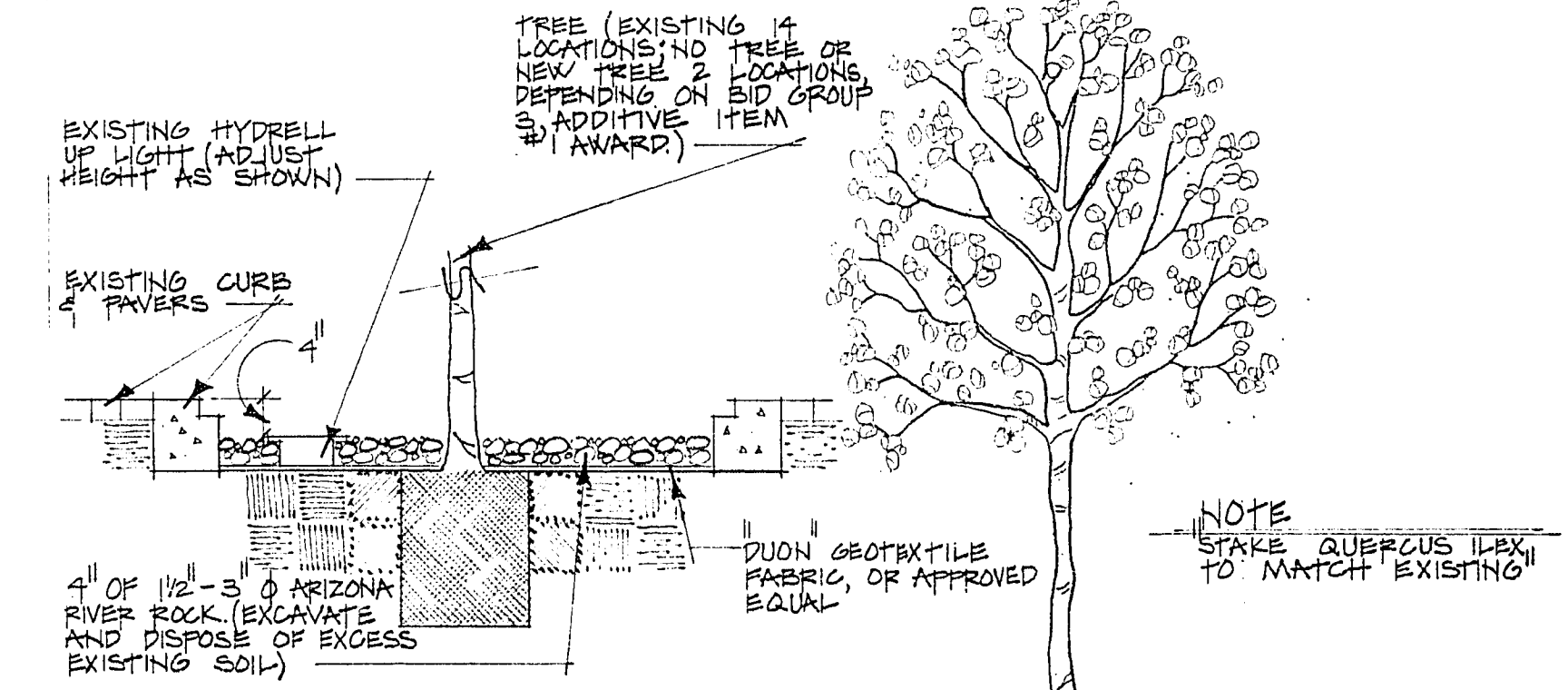


NOTE
 ANNUAL FLOWER BED LAYOUT AND DIMENSIONS FOR BOTH BEDS ARE TYPICAL PLANTING SCHEMES TO BE SUPPLIED TO CITY CREWS.

FAN PALM GROUPING TO SCREEN UTILITY EQUIPMENT



NOTE (N.I.C.)
 THESE TWO DETAILS DO NOT APPLY TO THIS CONTRACT AND ARE FOR CITY CREWS USE ONLY.



NOTE (N.I.C.)
 THESE TWO DETAILS DO NOT APPLY TO THIS CONTRACT AND ARE FOR CITY CREWS USE ONLY.

(4 LOCATIONS BID GROUP #3, BASE BID TOTAL 10 LOCATIONS BID GROUP #3, BASE BID + ADDITIVE ITEM #1)

Bus Exit

Exterior Tree Planting Detail
 No Scale

(2 LOCATIONS, BID GROUP #3, ADDITIVE ITEM #1, TOTAL 8 LOCATIONS, BID GROUP #3, ADDITIVE ITEMS #1 & #2)

Stewart Ave.

South Boarding Platform

Concrete Pavers

Trolley Circulation

Brick Wall