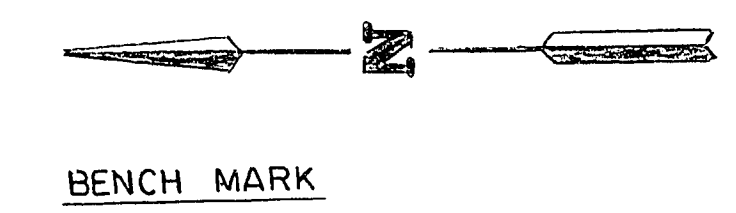
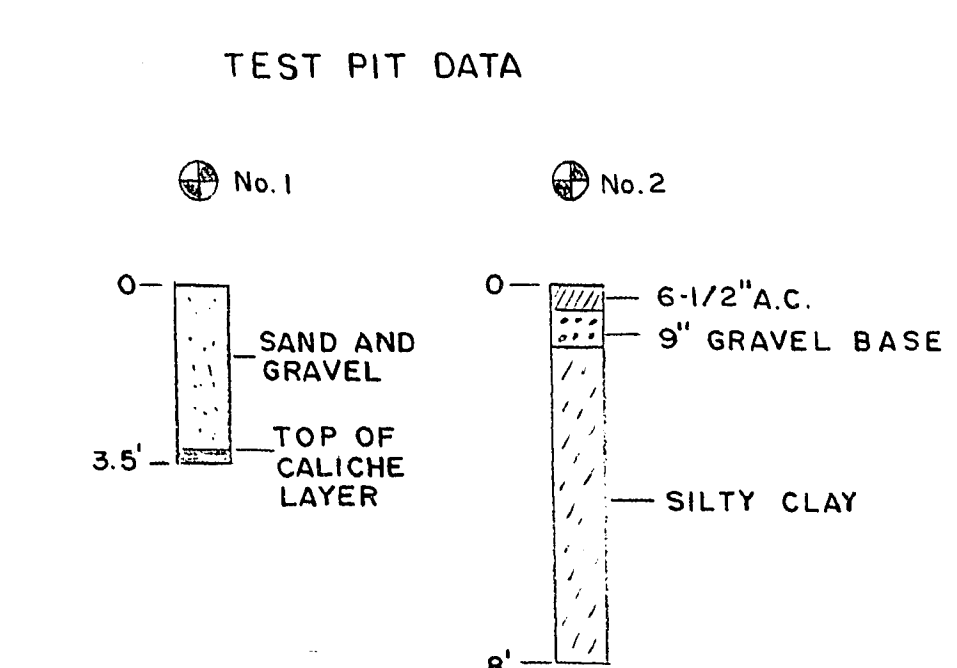
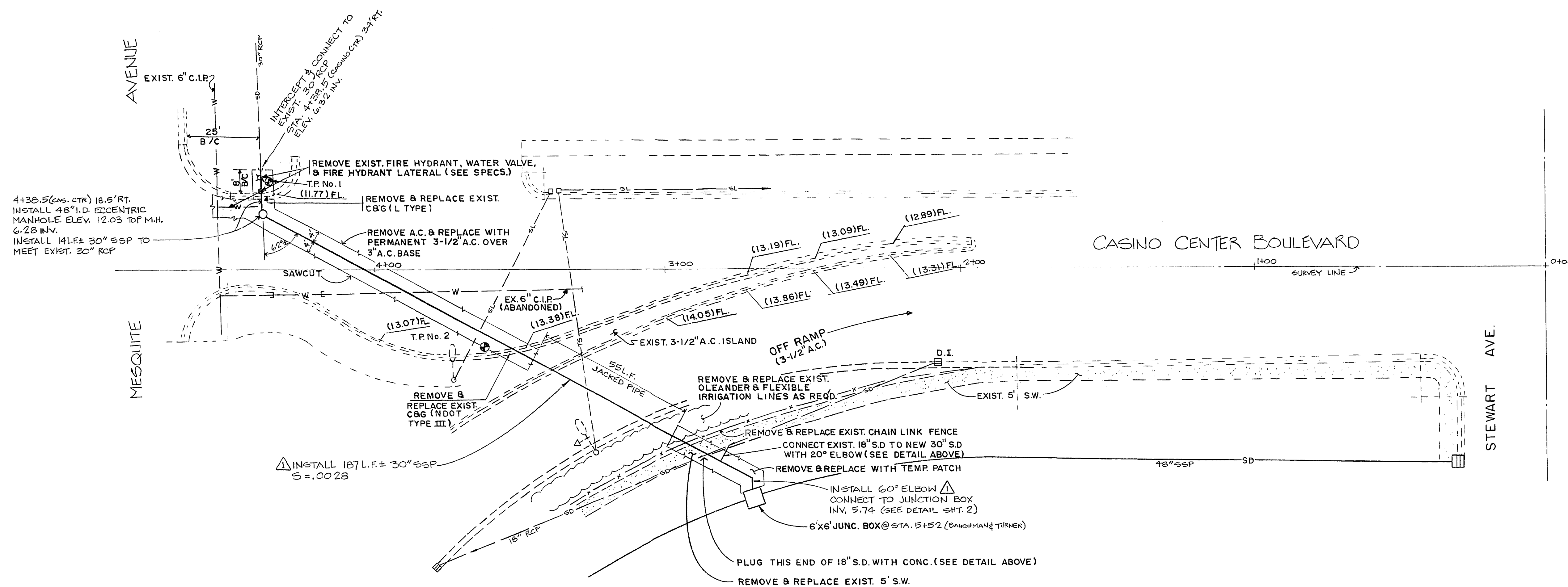


APPROX. QUANTITIES THIS SHEET

ITEM No.	DESCRIPTION	QUANTITY
202.00.00	TEMPORARY A.C. PAVEMENT REPLACEMENT	126 S.F.
202.00.01	PERMANENT A.C. PAVEMENT REPLACEMENT	864 S.F.
202.00.02	REMOVE CONCRETE C&G AND SIDEWALK	LUMP SUM
212.00.00	REMOVE & REPLACE EXISTING OLEANDERS	LUMP SUM
601.00.04A	18 INCH S.S.P. 20° ELBOW	1 EA.
601.00.05	30 INCH STORM SEWER PIPE	146 L.F.
601.00.05A	30 INCH S.S.P. 60° ELBOW	1 EA.
601.00.08	JACKED 30 INCH STORM SEWER PIPE (SSP)	55 L.F.
609.00.03	4' FOOT DIAMETER MANHOLE	1 EA.
613.00.01	'L' TYPE CURB & GUTTER	8 L.F.
613.00.02	NDOT TYPE III CURB & GUTTER	12 L.F.
613.00.08	CONCRETE SIDEWALK	80 L.F.
616.00.00	REMOVE & REPLACE CHAIN LINK FENCE	LUMP SUM
629.00.00	REMOVE EXIST. FIRE HYDRANT, WATER VALVE, AND WATER LATERAL	LUMP SUM



B.M. No. 06134B5 - TOP OF BOLT & PLATE
LOCATED IN CURB AT THE NW CORNER
STEWART AVE. & 1ST ST.
ELEV. = 2016.90 C.L.V. DATUM



- GENERAL NOTES
- EXIST. 12' FIRE LANE ALONG CASINO CENTER BLVD. MUST REMAIN OPEN AT ALL TIMES DURING CONSTRUCTION
 - 0.01" CRACK D-LOADS FOR ALL PIPE ON THIS SHEET = 900 L.B./FT. / FT. DIA.

Scale (h) 1" = 20'	Scale (v)	W.A.	Date	Revisions	Date
Fid. bk. no. 85-4X	Date	Drawn by	J.J.B.		
Department of Public Works Engineering Design Division			30" STORM DRAIN		
DOWNTOWN TRANSPORTATION CENTER			590-2A		