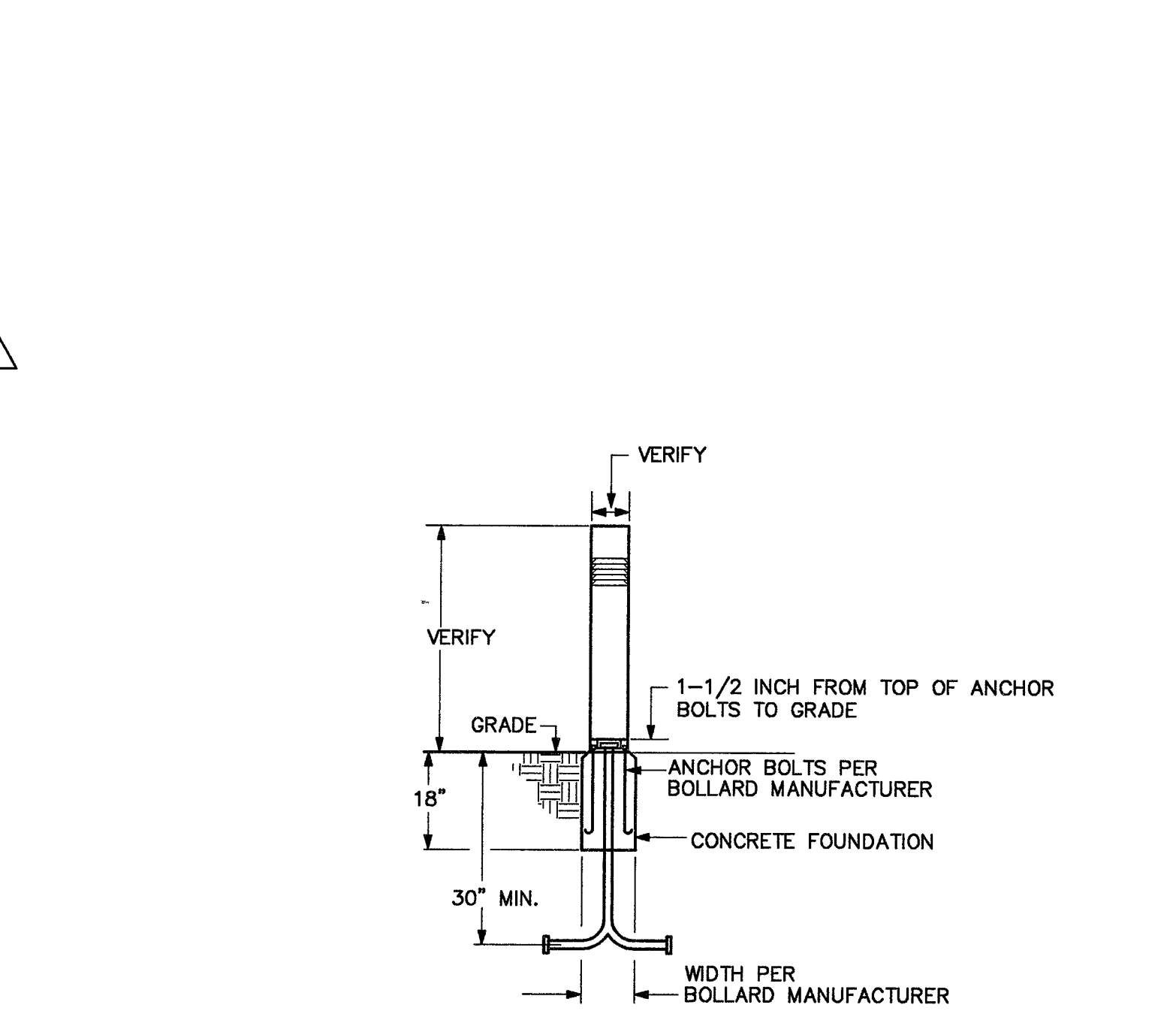


**CITY OF LAS VEGAS STANDARD
EXTENDED POLE BASE SCHEMATIC**
NO SCALE



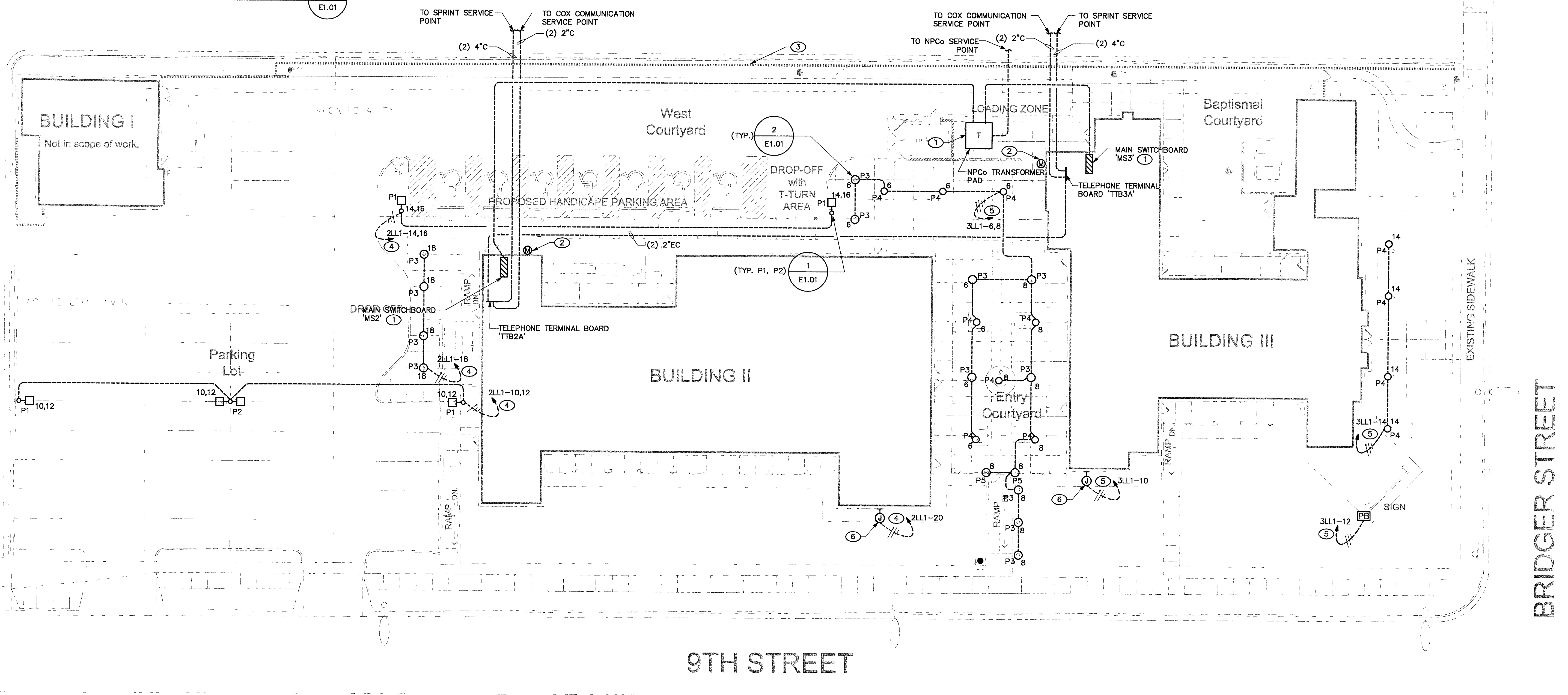
BOLLARD FOUNDATION DETAIL
NO SCALE

GENERAL NOTES

1. VERIFY ALL UTILITY LOCATIONS AND REQUIREMENTS WITH NPCO INSTALLATION DRAWINGS FOR THIS PROJECT PRIOR TO SUBMITTING BID. INCLUDE ALL COSTS IN BASE BID.
2. ALL EXTERIOR MOUNTED ELECTRICAL DEVICES AND EQUIPMENT SHALL BE IN WEATHERPROOF ENCLOSURE AND U.L. LISTED FOR WET LOCATION.
3. SEE SINGLE LINE DIAGRAM FOR ADDITIONAL INFORMATION.
4. ALL UNDERGROUND CONDUIT SHALL BE 1-1/4" MINIMUM, UNLESS NOTED OTHERWISE.
5. VERIFY MOUNTING HEIGHT AND EXACT LOCATION OF LIGHTING FIXTURES WITH ARCHITECTURAL DRAWINGS/OWNER PRIOR TO ROUGH-IN.
6. EXTERIOR WIRING SHALL BE #10 AWG MINIMUM, UNLESS NOTED OTHERWISE.
7. PULL BOXES LOCATED IN GRASS, DIRT OR ASPHALT SHALL HAVE 8" MINIMUM CONCRETE COLLAR WITH #4 REBAR. COVERS SHALL BE FACTORY IMPRINTED, SECURED WITH BRASS TIE-DOWNS AND MADE OF APPROVED NON-METALLIC POLYMER TYPE MATERIAL. LOCATE CONDUITS 3" ABOVE BOTTOM OF BOX. ALL SPLICES SHALL BE WATERPROOF WITH SPLIT BOLT, RUBBER TAPE, VINYL ELECTRICAL TAPE AND APPROVED ELECTRICAL COATING.
8. CONDUIT RUNS SHALL NOT EXCEED 300 FEET BETWEEN PULL BOXES OR HAVE MORE THAN 270 DEGREE BENDS. PROVIDE POLYESTER PULL TAPE WITH MINIMUM 1200 POUNDS OF PULL STRENGTH. PLACE VINYL WARNING MARKERS ABOVE CONDUITS AT 12" BELOW GROUND SURFACE.

SHEET NOTES

1. SEE SINGLE LINE DIAGRAM FOR ADDITIONAL INFORMATION.
2. REMOTE METERING PER NPCO REQUIREMENTS.
3. COORDINATE OVERHEAD POWER LINE REQUIREMENTS WITH NPCO PRIOR TO SUBMITTING BID. INCLUDE ALL COSTS IN BASE BID. TYPICAL ENTIRE POLE LINE.
4. ROUTE CIRCUITS TO PANEL '2LL1' VIA LIGHTING CONTACTOR. PANEL AND CONTACTOR LOCATED IN FIRST FLOOR ELECTRICAL ROOM OF BUILDING 2. REFER TO DETAIL 1/E2.01 FOR ADDITIONAL INFORMATION.
5. ROUTE CIRCUITS TO PANEL '3LL1' VIA LIGHTING CONTACTOR. PANEL AND CONTACTOR LOCATED IN FIRST FLOOR ELECTRICAL ROOM OF BUILDING 3. REFER TO DETAIL 1/E2.03 FOR ADDITIONAL INFORMATION.
6. PROVIDE JUNCTION BOX FOR BUILDING SIGN. FIELD VERIFY ROUGH-IN LOCATION.



ELECTRICAL SITE PLAN
SCALE: 1/16"=1'-0"

REVISIONS
5-21-04 PLAN CHECK

CONSULTANT
JMA ARCHITECTURE STUDIOS
10150 CONINGTON CROSS DRIVE LAS VEGAS, NEVADA 89134 (702) 331-2033

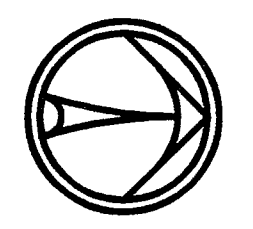
CITY OF LAS VEGAS
DOWNTOWN SENIOR SERVICES CENTER
NEIGHBORHOOD SERVICES

BID SET

OWNER: CITY OF LAS VEGAS
DEPARTMENT OF PUBLIC WORKS
ARCHITECTURAL SERVICES

PROJECT NO. 23154.30
DESIGNED BY: S. ZAY
CHECKED BY: P. WISSENHUT
DRAWN BY: R. PUERNER
PM: G. GIBBS

HARRIS
700 WEST BURNING WOOD DRIVE, SUITE 100, LAS VEGAS, NEVADA 89115
TEL: 702.586.1515 FAX: 702.586.1514



OWNER'S REPRESENTATIVE OF SENIOR AND THE PROPERTY OF THE SENIOR PROFESSIONAL, WHOLE OR IN PART WITHOUT WRITTEN CONSENT IS STRICTLY PROHIBITED UNDER THE PENALTIES AND PENALTIES OF THE ENGINEERING AND ARCHITECTURE ACTS OF THE STATE OF NEVADA. PROJECT NO. 23154.30