

**WATER LINE QUANTITIES**

2" RPPA	1 EA
2" METER	1 EA
6" DCDA	2 EA
6" WATER	967 LF
2.5" WATER	231 LF
2" CU WATER	16 LF
6" 90° ELL	10 EA
6"x6"x6" TEE	4 EA
8"x6"x6" TEE	2 EA
6" 45° ELL	1 EA
FIRE HYDRANT	1 EA
2.5" 90° ELL	3 EA
2.5"x2.5"x2.5" TEE	1 EA

**SEWER LINE QUANTITIES**

4" SDR 35 SS	83 LF
4" C900 SS	131 LF
6" SDR 35 SS	214 LF
6" C900 SS	88 LF
4" CLEAN OUT	5 EA
6" CLEAN OUT	3 EA

**NOTE:**  
QUANTITIES ARE FOR REFERENCE ONLY. ALL QUANTITIES SHALL BE VERIFIED BY THE CONTRACTOR AND INSTALLED AS SHOWN ON THE PLANS.

**REDUCED PRESSURE PRINCIPLE ASSEMBLY-(1) 2" RPPA**

APPROVED REDUCED PRESSURE PRINCIPLE ASSEMBLY(S) SHALL BE INSTALLED PER THE UDACS PLATE NO. 11A AND DUAL BACKFLOW PREVENTION ASSEMBLY DETAIL. NO WATER SHALL BE TAKEN FROM A SERVICE REQUIRING BACKFLOW PREVENTION UNTIL THE REDUCED PRESSURE PRINCIPLE ASSEMBLY HAS BEEN SUCCESSFULLY TESTED BY THE LVWMD. ANY BLOCKWALL OR OTHER FENCE MATERIAL SHALL BE DESIGNED AND CONSTRUCTED AROUND THE OUTSIDE OF THE EASEMENT(S) TO ALLOW THE DISTRICT DIRECT ACCESS FROM THE ADJACENT RIGHT-OF-WAY.

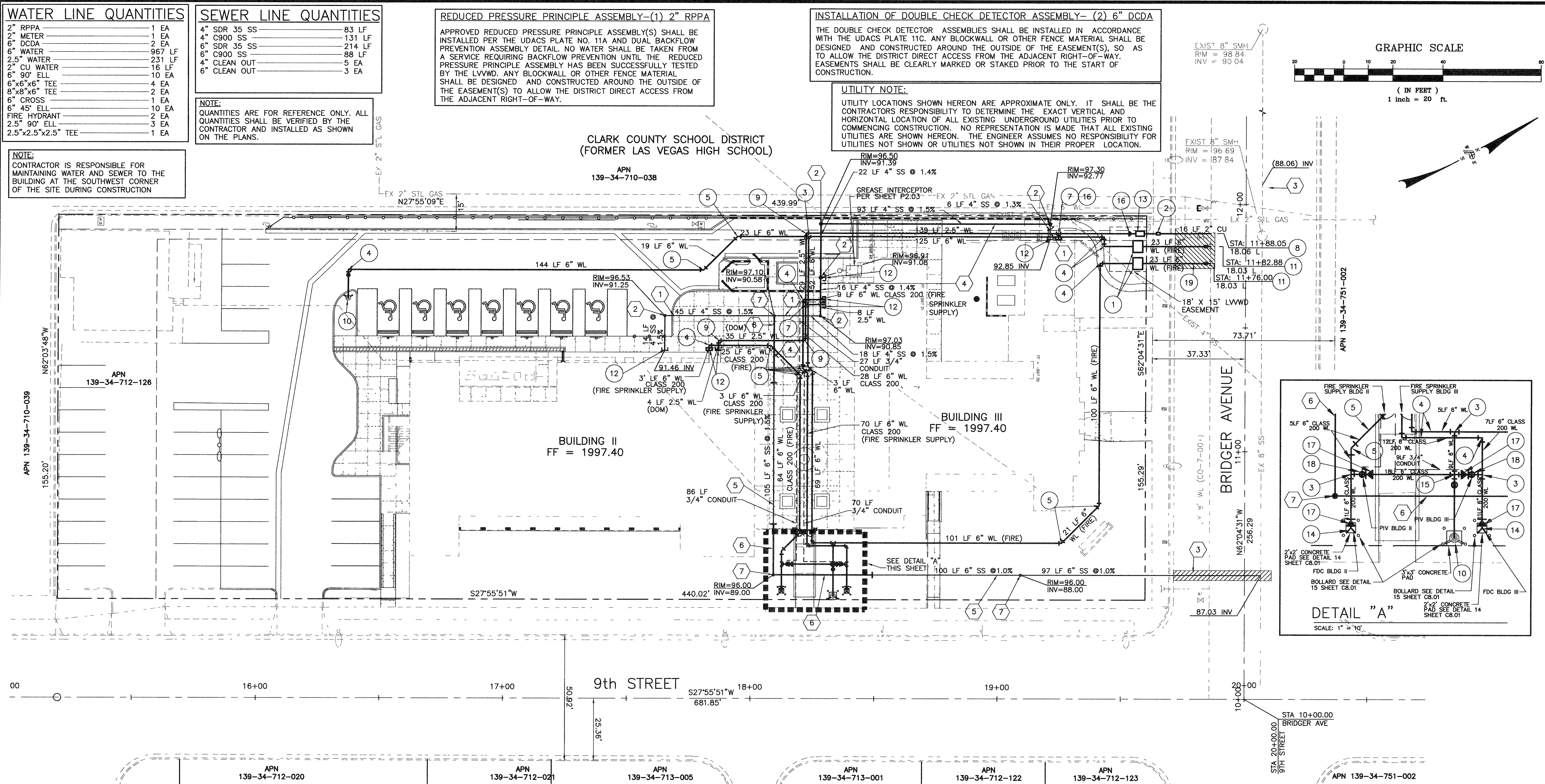
**INSTALLATION OF DOUBLE CHECK DETECTOR ASSEMBLY-(2) 6" DCDA**

THE DOUBLE CHECK DETECTOR ASSEMBLY(S) SHALL BE INSTALLED IN ACCORDANCE WITH THE UDACS PLATE 11C. ANY BLOCKWALL OR OTHER FENCE MATERIAL SHALL BE DESIGNED AND CONSTRUCTED AROUND THE OUTSIDE OF THE EASEMENT(S), SO AS TO ALLOW THE DISTRICT DIRECT ACCESS FROM THE ADJACENT RIGHT-OF-WAY. EASEMENTS SHALL BE CLEARLY MARKED OR STAKED PRIOR TO THE START OF CONSTRUCTION.

**UTILITY NOTE:**

UTILITY LOCATIONS SHOWN HEREON ARE APPROXIMATE ONLY. IT SHALL BE THE CONTRACTOR'S RESPONSIBILITY TO DETERMINE THE EXACT VERTICAL AND HORIZONTAL LOCATION OF ALL EXISTING UNDERGROUND UTILITIES PRIOR TO COMMENCING CONSTRUCTION. NO RESPONSIBILITY IS MADE THAT ALL EXISTING UTILITIES ARE SHOWN HEREON. THE ENGINEER ASSUMES NO RESPONSIBILITY FOR UTILITIES NOT SHOWN OR UTILITIES NOT SHOWN IN THEIR PROPER LOCATION.

**NOTE:**  
CONTRACTOR IS RESPONSIBLE FOR MAINTAINING WATER AND SEWER TO THE BUILDING AT THE SOUTHWEST CORNER OF THE SITE DURING CONSTRUCTION



**NOTE**

WHERE THE REQUIRED TEN (10) FEET SEPARATION IS NOT PRACTICABLE THE WATER AND SEWER LINES SHALL BE IN SEPARATE TRENCHES WITH MINIMUM SEPARATION OF FIVE(5) FEET

**BENCHMARK**

601,0487 METERS 1971.94 FEET NAVD88 CIVL STATION 2LV01 34SE68 RIVET AND PLATE IN TOP OF CURB, SE RETURN MARYLAND PARKWAY AND LEWIS AVENUE

**BASIS OF BEARING**

SOUTH 62°04'31" EAST, BEING THE CENTERLINE OF BRIDGER AVENUE AS SHOWN PER RECORD OF SURVEY RECORDED IN FILE 67 OF SURVEYS, PAGE 79.

**APPROVED FOR CONSTRUCTION**

LAS VEGAS VALLEY WATER DISTRICT

DATE

**FIRE FLOW CALCULATIONS**

**BUILDING II**

FIRE FLOW REQUIREMENTS IS 1500 GALLONS PER MINUTE AT 20 PSI RESIDUAL PRESSURE.

BASED ON:  
 SQUARE FOOTAGE: 13,132 SQUARE FEET  
 LARGEST AREA BETWEEN 4-HOUR AREA SEPARATION WALLS: 13,132 SQUARE FEET  
 BUILDING HEIGHT: 37' 0" FEET  
 NUMBER OF STORIES: 2 FLOORS  
 TYPE OF CONSTRUCTION: V-N  
 OCCUPANCY: B  
 FULL AUTOMATIC FIRE SYSTEM: ALL BUILDINGS  YES  NO  
 REVIEWED BY: [Signature] DATE: 9/25/04  
 CITY OF LAS VEGAS FIRE DEPT.

**APPROVED FOR CONSTRUCTION**

LAS VEGAS VALLEY WATER DISTRICT

DATE

**FIRE FLOW CALCULATIONS**

**BUILDING III**

FIRE FLOW REQUIREMENTS IS 1500 GALLONS PER MINUTE AT 20 PSI RESIDUAL PRESSURE.

BASED ON:  
 SQUARE FOOTAGE: 7,376 SQUARE FEET  
 LARGEST AREA BETWEEN 4-HOUR AREA SEPARATION WALLS: 7,376 SQUARE FEET  
 BUILDING HEIGHT: 37' 0" FEET  
 NUMBER OF STORIES: 2 FLOORS  
 TYPE OF CONSTRUCTION: V-N  
 OCCUPANCY: A3,B  
 FULL AUTOMATIC FIRE SYSTEM: ALL BUILDINGS  YES  NO  
 REVIEWED BY: [Signature] DATE: 9/25/04  
 CITY OF LAS VEGAS FIRE DEPT.

**WATER CONSTRUCTION NOTES:**

- INSTALL 6" DCDA IN ACCORDANCE WITH UDACS PLATE NO. 11C
- INSTALL 2" METER ACCORDANCE WITH UDACS PLATE NO. 1-D (DOMESTIC)
- INSTALL 6"x6"x6" TEE
- INSTALL 6" 90° ELL
- INSTALL 6" 45° ELL
- NOT USED
- INSTALL 2.5"x2.5"x2.5" TEE
- INSTALL 8"x2" TAPPING SLEEVE & 2" TAPPING VALVE PER UDACS PLT. 1D
- INSTALL 2.5" 90° ELL
- INSTALL FIRE HYDRANT IN ACCORDANCE WITH UDACS PLATE NO. 7(CLOW OR MUELLER)
- INSTALL 8"x6" M.J. TAPPING SLEEVE W/6" TAPPING VALVE PER UDACS PLT 22 FOR CONTINUATION OF WATER AND SEWER REFER TO PLUMBING DRAWING
- INSTALL BACKFLOW PREVENTION ASSEMBLY (2" RPPA) PER UDACS PLATE NO. 11A
- INSTALL REMOTE FDC
- INSTALL 6" CROSS
- INSTALL 2.5"x2" REDUCER
- INSTALL 6" CHECK VALVE
- INSTALL PIV W/TAMPER SWITCH
- TRENCH BACKFILL PER STD DWG No 504. 4" WIDE MIN. AC REPLACEMENT. (4" MIN.)

**SEWER CONSTRUCTION NOTES:**

- CONSTRUCT 4" PVC SDR 35 SANITARY SEWER LINE IN ACCORDANCE WITH DCSWCS AND SD-16A
- CONSTRUCT 4" CLEAN OUT IN ACCORDANCE WITH DETAIL
- TRENCH BACKFILL PER STD DWG No 504. 4" WIDE MIN. AC REPLACEMENT. (4" MIN.)
- CONSTRUCT 4" PVC C900 SANITARY SEWER LINE IN ACCORDANCE WITH DCSWCS AND SD-16A
- CONSTRUCT 6" PVC SDR 35 SANITARY SEWER LINE IN ACCORDANCE WITH DCSWCS AND SD-16A
- CONSTRUCT 6" PVC C900 SANITARY SEWER LINE IN ACCORDANCE WITH DCSWCS AND SD-16A
- CONSTRUCT 6" CLEAN OUT IN ACCORDANCE WITH DETAIL

**Call before you Dig**

1-800-227-2800

**JMA ARCHITECTURE STUDIOS**  
10150 CONINGTON CROSS DRIVE  
LAS VEGAS, NEVADA 89144  
(702) 731-2033 FAX (702) 731-2034

**poggemeyer design group, inc.**  
engineers • planners • architects • landscape architects  
2800 South Meyer Road, Las Vegas, NV 89102 • P: 702.258.8000 • F: 702.258.8075

**UTILITY PLAN**

**DOWNTOWN SENIOR SERVICES CENTER**

SCALE: 1" = 20' HORIZ. 1" = 1' VERT.

PROJECT NO. 020276

**C7.01**  
7 OF 8 SHEETS  
**521.287**

BID SET

BID No. 04.15341.01