

**WATER LINE QUANTITIES**

2" RPPA	1 EA
2" METER	1 EA
6" DCDA	2 EA
6" WATER	967 LF
2.5" WATER	231 LF
2" CU WATER	16 LF
6" 90° ELL	10 EA
6"x6"x6" TEE	4 EA
8"x8"x6" TEE	2 EA
6" CROSS	1 EA
6" 45° ELL	1 EA
FIRE HYDRANT	2 EA
2.5" 90° ELL	3 EA
2.5"x2.5"x2.5" TEE	1 EA

**SEWER LINE QUANTITIES**

4" SDR 35 SS	83 LF
4" C900 SS	131 LF
6" SDR 35 SS	214 LF
6" C900 SS	88 LF
4" CLEAN OUT	5 EA
6" CLEAN OUT	3 EA

**NOTE:**  
QUANTITIES ARE FOR REFERENCE ONLY. ALL QUANTITIES SHALL BE VERIFIED BY THE CONTRACTOR AND INSTALLED AS SHOWN ON THE PLANS.

**REDUCED PRESSURE PRINCIPLE ASSEMBLY--(1) 2" RPPA**

APPROVED REDUCED PRESSURE PRINCIPLE ASSEMBLY(S) SHALL BE INSTALLED PER THE UDACS PLATE NO. 11A AND DUAL BACKFLOW PREVENTION ASSEMBLY DETAIL. NO WATER SHALL BE TAKEN FROM A SERVICE REQUIRING BACKFLOW PREVENTION UNTIL THE REDUCED PRESSURE PRINCIPLE ASSEMBLY HAS BEEN SUCCESSFULLY TESTED BY THE LVVWD. ANY BLOCKWALL OR OTHER FENCE MATERIAL SHALL BE DESIGNED AND CONSTRUCTED AROUND THE OUTSIDE OF THE EASEMENT(S) TO ALLOW THE DISTRICT DIRECT ACCESS FROM THE ADJACENT RIGHT-OF-WAY.

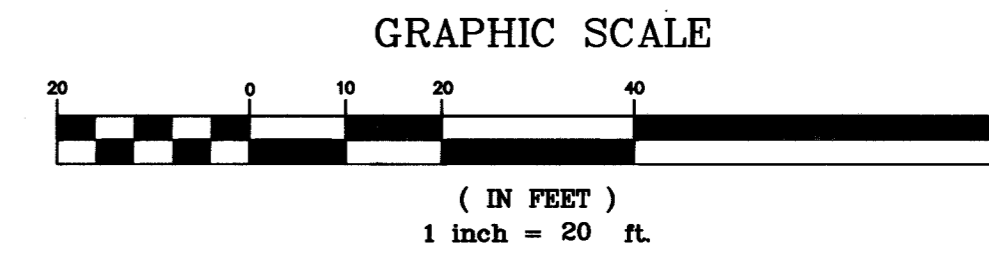
**INSTALLATION OF DOUBLE CHECK DETECTOR ASSEMBLY-- (2) 6" DCDA**

THE DOUBLE CHECK DETECTOR ASSEMBLIES SHALL BE INSTALLED IN ACCORDANCE WITH THE UDACS PLATE 11C. ANY BLOCKWALL OR OTHER FENCE MATERIAL SHALL BE DESIGNED AND CONSTRUCTED AROUND THE OUTSIDE OF THE EASEMENT(S), SO AS TO ALLOW THE DISTRICT DIRECT ACCESS FROM THE ADJACENT RIGHT-OF-WAY. EASEMENTS SHALL BE CLEARLY MARKED OR STAKED PRIOR TO THE START OF CONSTRUCTION.

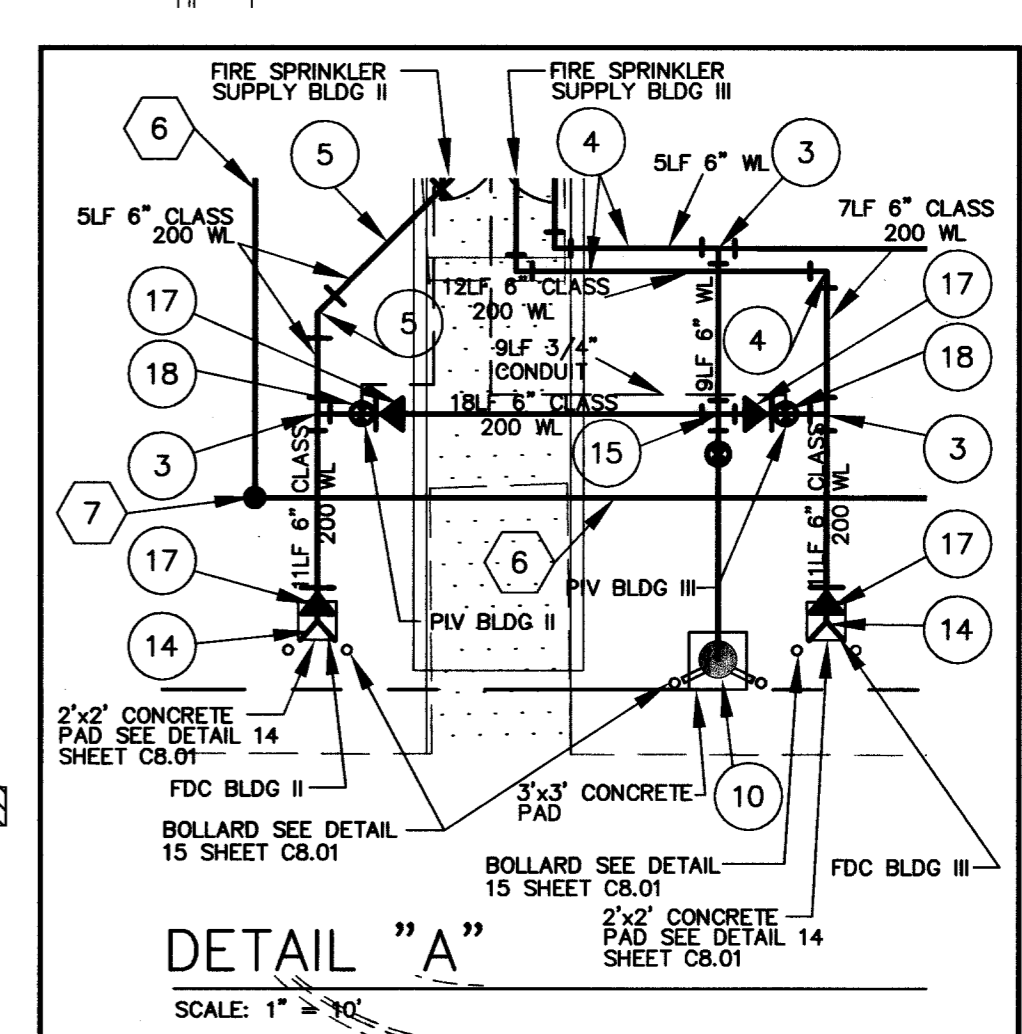
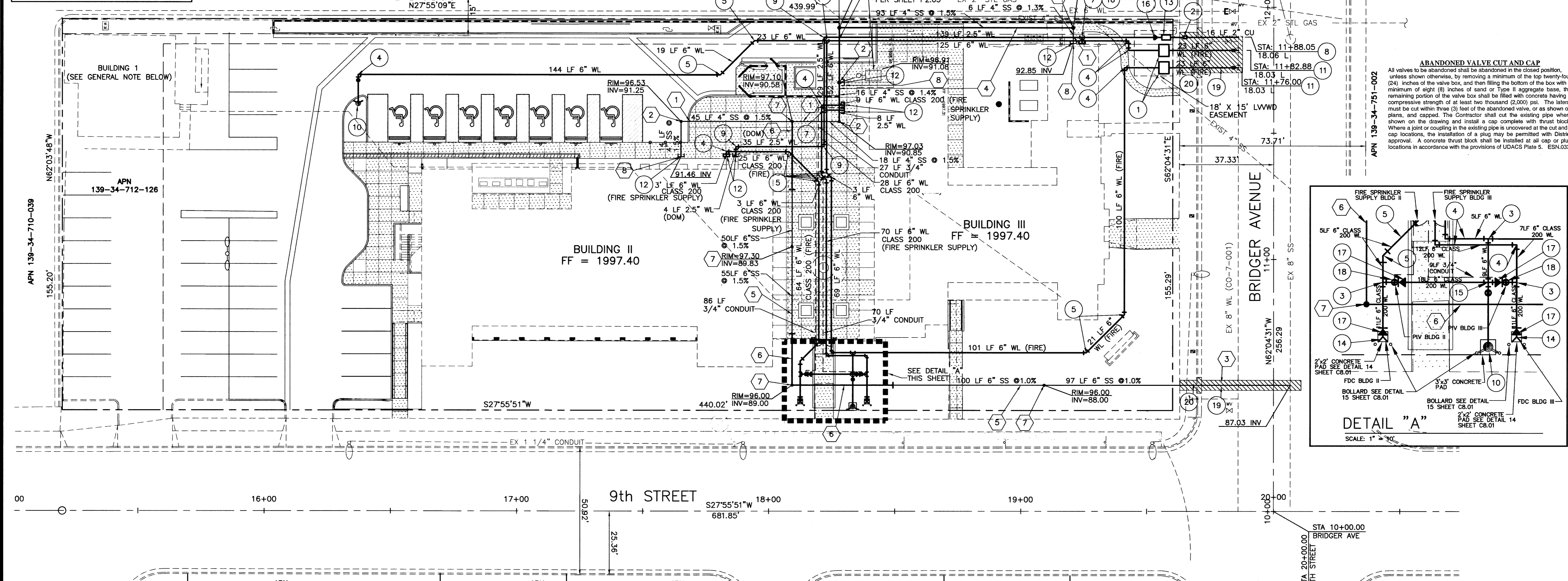
**UTILITY NOTE:**

UTILITY LOCATIONS SHOWN HEREON ARE APPROXIMATE ONLY. IT SHALL BE THE CONTRACTOR'S RESPONSIBILITY TO DETERMINE THE EXACT VERTICAL AND HORIZONTAL LOCATION OF ALL EXISTING UNDERGROUND UTILITIES PRIOR TO COMMENCING CONSTRUCTION. NO REPRESENTATION IS MADE THAT ALL EXISTING UTILITIES ARE SHOWN HEREON. THE ENGINEER ASSUMES NO RESPONSIBILITY FOR UTILITIES NOT SHOWN OR UTILITIES NOT SHOWN IN THEIR PROPER LOCATION.

EXIST 8" SMH  
RIM = 98.84  
INV = 90.04



**NOTE:**  
CONTRACTOR IS RESPONSIBLE FOR MAINTAINING WATER AND SEWER TO THE BUILDING AT THE SOUTHWEST CORNER OF THE SITE DURING CONSTRUCTION



**GENERAL NOTE**  
BUILDING ONE WILL NEED TO BE UTILIZED BY EXISTING TENANTS UNTIL TEMPORARY CERTIFICATE OF OCCUPANCY IS ISSUED FOR BUILDING 3. THIS WILL INCLUDE WATER, POWER, PHONE, VEHICULAR ACCESS, AND PEDESTRIAN ACCESS. EXISTING SANITATION SEWER IS CONNECTED TO BUILDING 2 AT THIS TIME. THE CONTRACTOR IS RESPONSIBLE FOR TEMPORARILY RELOCATING SEWER LINE AND PHASING THE WORK ACCORDINGLY.

**NOTE**  
WHERE THE REQUIRED TEN (10) FEET SEPARATION IS NOT PRACTICABLE THE WATER AND SEWER LINES SHALL BE IN SEPARATE TRENCHES WITH MINIMUM SEPARATION OF FIVE(5) FEET

**BENCHMARK**  
601.0487 METERS 1971.94 FEET NAVD88 CLV STATION 2LV01 34SEE6 RIVET AND PLATE IN TOP OF CURB, SE RETURN MARYLAND PARKWAY AND LEWIS AVENUE

**BASIS OF BEARING**  
SOUTH 62°04'31" EAST, BEING THE CENTERLINE OF BRIDGER AVENUE AS SHOWN PER RECORD OF SURVEY RECORDED IN FILE 67 OF SURVEYS, PAGE 79.

**FIRE FLOW CALCULATIONS BUILDING II**  
FIRE FLOW REQUIREMENTS IS 1500 GALLONS PER MINUTE AT 20 PSI RESIDUAL PRESSURE.  
BASED ON:  
SQUARE FOOTAGE: 13,132 SQUARE FEET  
LARGEST AREA BETWEEN 4-HOUR AREA SEPARATION WALLS: 13,132 SQUARE FEET  
BUILDING HEIGHT: 37' 0" FEET  
NUMBER OF STORIES: 2 FLOORS  
TYPE OF CONSTRUCTION: V-N  
OCCUPANCY: B  
FULL AUTOMATIC FIRE SYSTEM: ALL BUILDINGS  YES  NO  
REVIEWED BY: *Robert Bell* DATE: 12-3-04  
CITY OF LAS VEGAS FIRE DEPT.

**APPROVED FOR CONSTRUCTION**  
*Robert Bell* 1/10/15 DATE  
LAS VEGAS VALLEY WATER DISTRICT  
Proj. H106424

**FIRE FLOW CALCULATIONS BUILDING III**  
FIRE FLOW REQUIREMENTS IS 1500 GALLONS PER MINUTE AT 20 PSI RESIDUAL PRESSURE.  
BASED ON:  
SQUARE FOOTAGE: 7,376 SQUARE FEET  
LARGEST AREA BETWEEN 4-HOUR AREA SEPARATION WALLS: 7,376 SQUARE FEET  
BUILDING HEIGHT: 37' 0" FEET  
NUMBER OF STORIES: 2 FLOORS  
TYPE OF CONSTRUCTION: V-N  
OCCUPANCY: A3.B  
FULL AUTOMATIC FIRE SYSTEM: ALL BUILDINGS  YES  NO  
REVIEWED BY: *Robert Bell* DATE: 12-3-04  
CITY OF LAS VEGAS FIRE DEPT.

**WATER CONSTRUCTION NOTES:**

- INSTALL 6" DCDA IN ACCORDANCE WITH UDACS PLATE No. 11C
- INSTALL 2" METER ACCORDANCE WITH UDACS PLATE No. 1-D (DOMESTIC)
- INSTALL 6"x6"x6" TEE
- INSTALL 6" 90° ELL
- INSTALL 6" 45° ELL
- NOT USED
- INSTALL 2.5"x2.5"x2.5" TEE
- INSTALL 8"x2" TAPPING SLEEVE & 2" TAPPING VALVE PER UDACS PLT. 1D
- INSTALL 2.5" 90° ELL
- INSTALL FIRE HYDRANT IN ACCORDANCE WITH UDACS PLATE NO. 7(CLOW OR MUELLER)
- INSTALL 8"x6" M.J. TAPPING SLEEVE W/6" TAPPING VALVE PER UDACS PLT. 22
- FOR CONTINUATION OF WATER AND SEWER REFER TO PLUMBING DRAWING

**SEWER CONSTRUCTION NOTES**

- CONSTRUCT 4" PVC SDR 35 SANITARY SEWER LINE IN ACCORDANCE WITH DCSWCS AND SD-16A
- TRENCH BACKFILL PER STD DWG No. 504, 4' WIDE MIN. AC REPLACEMENT. (4" MIN.)
- CONSTRUCT 4" PVC C900 SANITARY SEWER LINE IN ACCORDANCE WITH DCSWCS AND SD-16A
- CONSTRUCT 6" PVC SDR 35 SANITARY SEWER LINE IN ACCORDANCE WITH DCSWCS AND SD-16A
- CONSTRUCT 6" PVC C900 SANITARY SEWER LINE IN ACCORDANCE WITH DCSWCS AND SD-16A
- CONSTRUCT 6" CLEAN OUT IN ACCORDANCE WITH DETAIL C8.01
- CONSTRUCT 45° ELL TO CONNECT TO BUILDING SEWER
- INTERCEPT EXISTING STREET LIGHT CIRCUIT
- INSTALL 1 1/2" PULL BOX REPAIR EXISTING CONDUITORS.

- INSTALL BACKFLOW PREVENTION ASSEMBLY (2" RPPA) PER UDACS PLATE NO. 11A
- INSTALL REMOTE FDC
- INSTALL 6" CROSS
- INSTALL 2.5"x2" REDUCER
- INSTALL 6" CHECK VALVE
- INSTALL PIV W/TAMPER SWITCH
- TRENCH BACKFILL PER STD DWG No. 504, 4' WIDE MIN. AC REPLACEMENT. (4" MIN.)
- SAWCUT SIDEWALK, CURB AND GUTTER AT THE JOINTS, REMOVE AND REPLACE PER USD DWG #234 & #216 RESPECTIVELY TO MATCH EXISTING SURFACE GRADES.
- INTERCEPT EXISTING STREET LIGHT CIRCUIT
- INSTALL 1 1/2" PULL BOX REPAIR EXISTING CONDUITORS.

Call before you Dig. 1-800-227-2600

Call before you Dig. 1-702-455-7511

Call before you Dig. 1-702-722-6611

Call before you Dig. 1-702-593-6111

Call before you Dig. 1-800-227-2600

**JMA ARCHITECTURE STUDIOS**  
10150 COVINGTON CROSS DRIVE  
LAS VEGAS, NEVADA 89144  
(702)-731-2033 PHONE

**poggemeyer design group, inc.**  
engineers • planners • surveyors • landscape architects  
2601 North Tropic Way, Las Vegas, NV 89128 • (702) 258-4376

**UTILITY PLAN**  
**DOWNTOWN SENIOR SERVICES CENTER**

SHEET: 09/09/04  
DESIGNED BY: NSW  
CHECKED BY: KLS  
PROJECT NO.: 02076

SCALE: 1" = 20' HOR. VERT. 1" = 1' VERT.

DATE: 09/09/04

PROJECT NO.: 02076

**C7.01**  
7 OF 8 SHEETS  
DRAWING NO. 521.287

**BID SET**