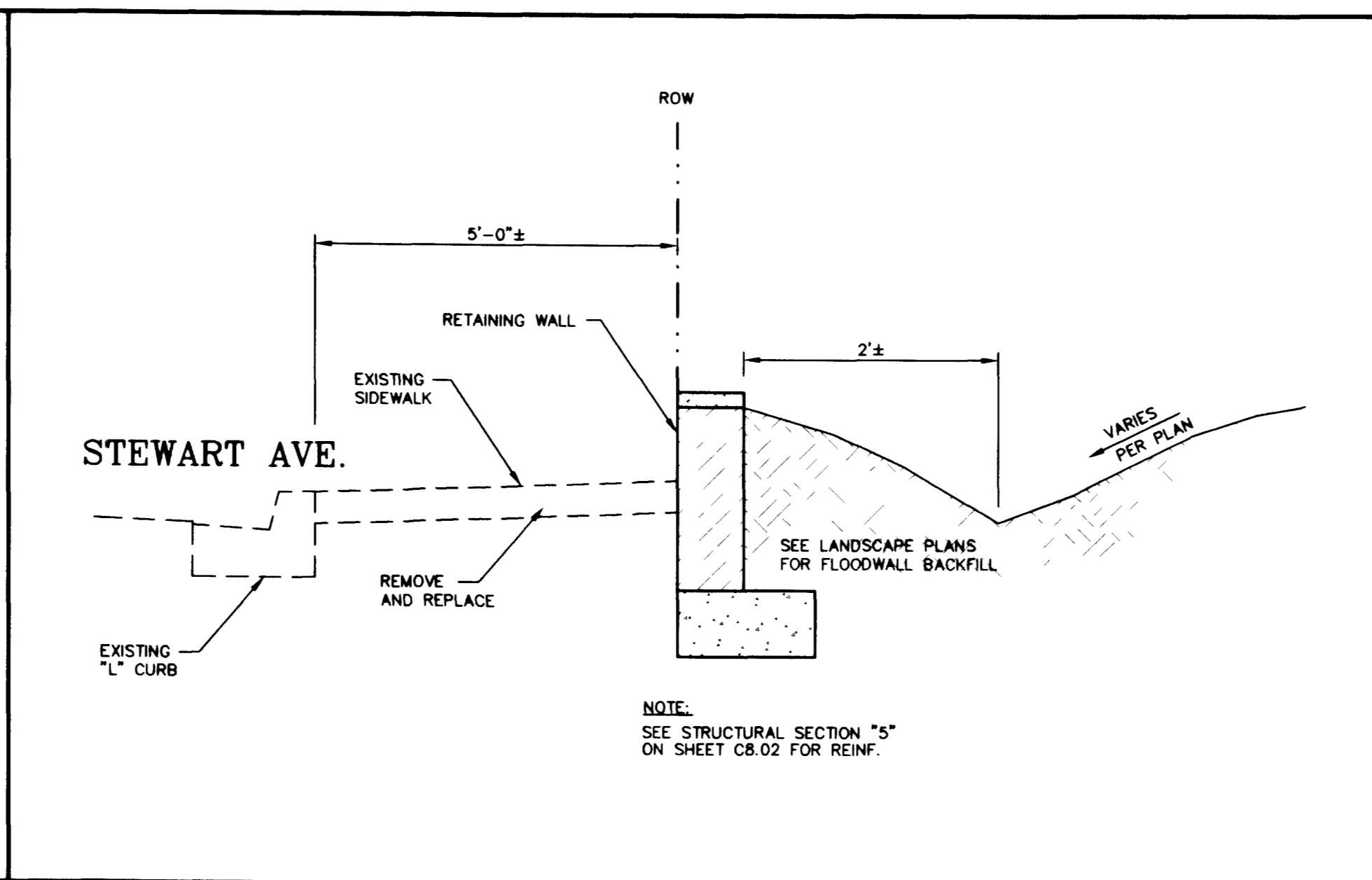
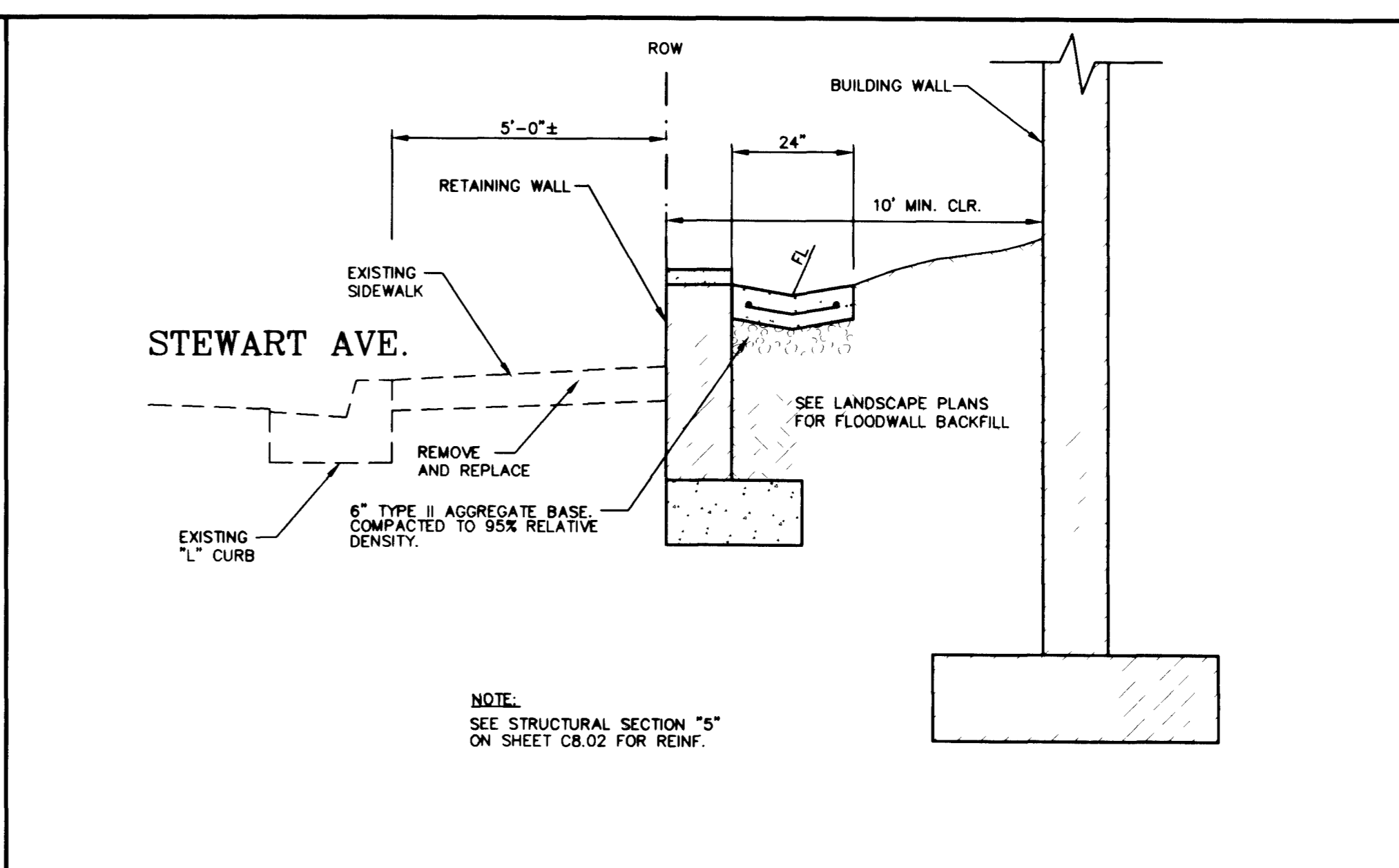


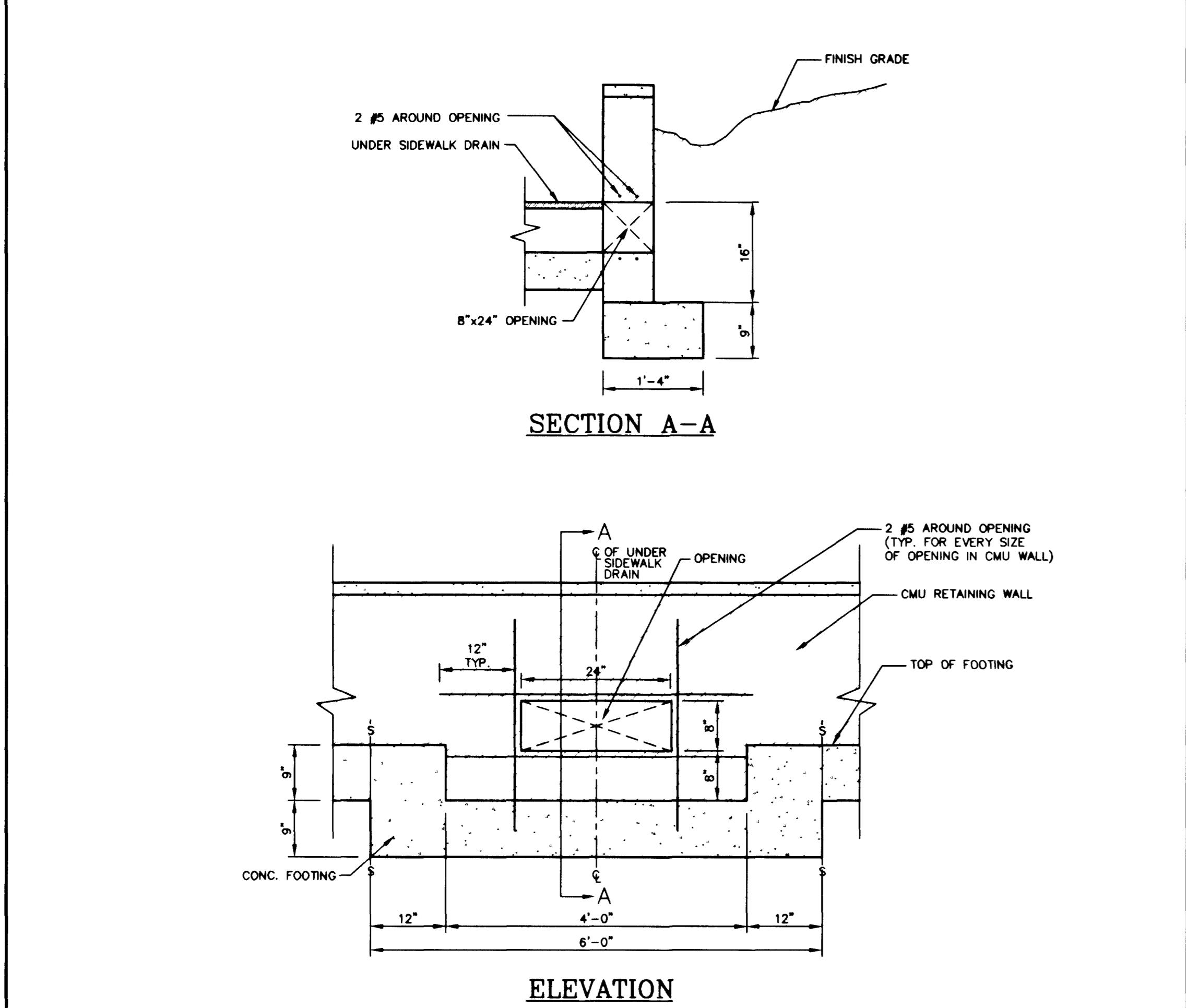
10 SECTION -A- N.T.S.



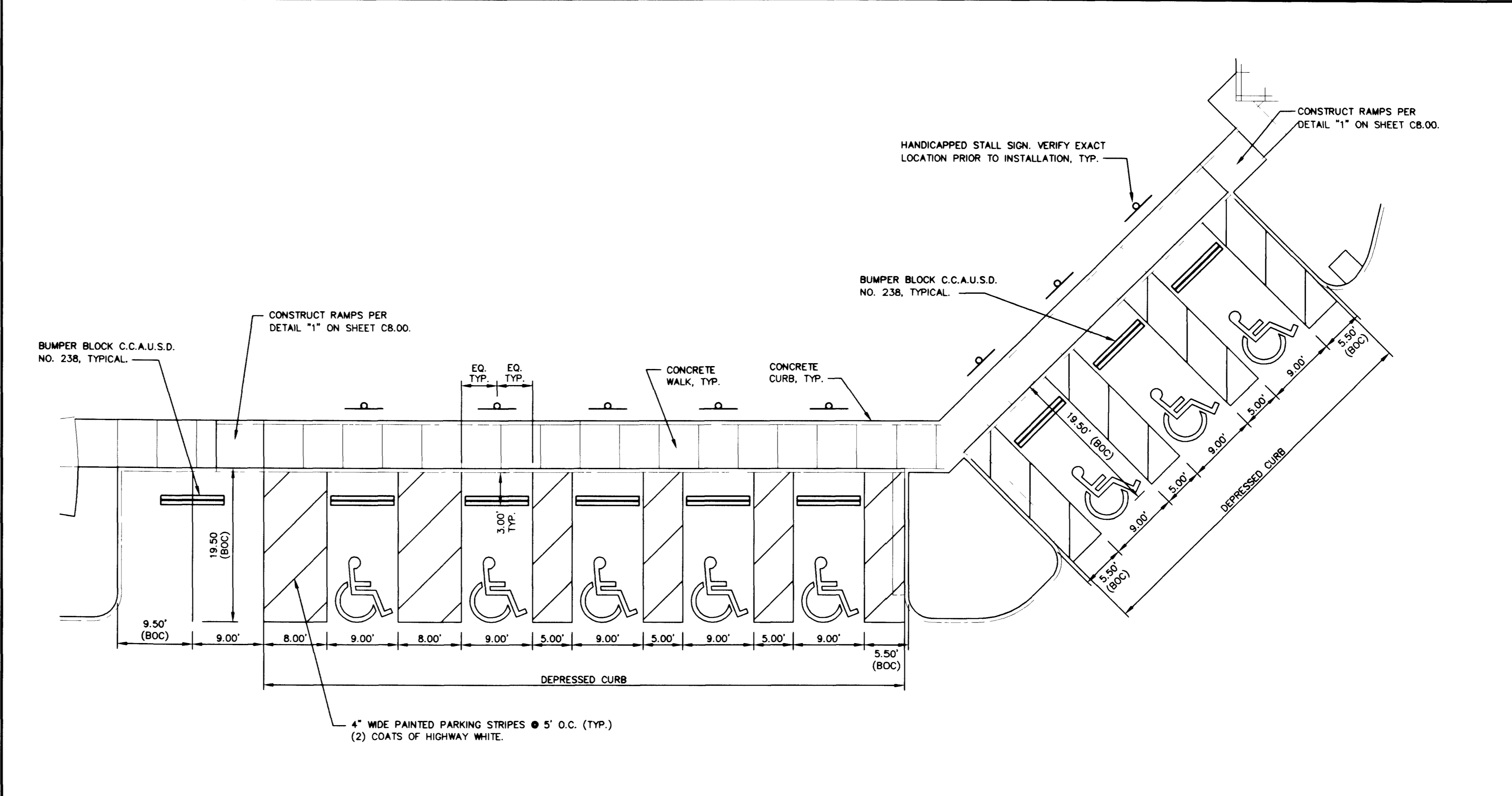
11 SECTION -B- N.T.S.



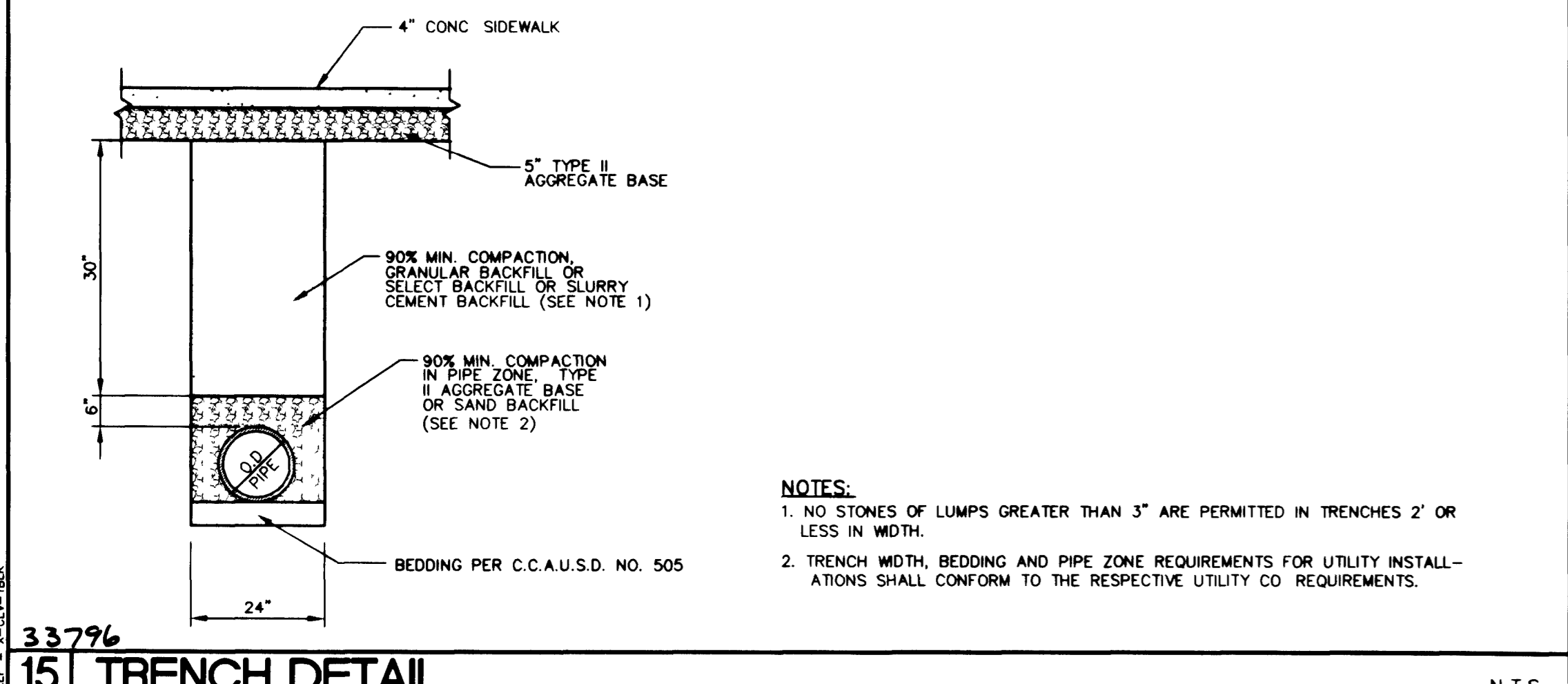
12 SECTION -C- N.T.S.



13 STEPPED FOOTING AND OPENING REINFORCEMENT DETAIL N.T.S.



14 HANDICAP PARKING STALL DETAIL N.T.S.



15 TRENCH DETAIL N.T.S.



REVISIONS

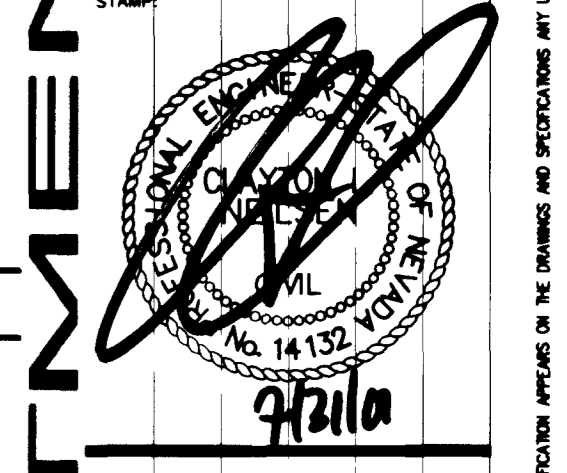
CONSULTANT

Nevada By Design
 ENGINEERING CONSULTANTS
 3515 East Harmon Avenue
 Las Vegas, NV 89121
 Phone: (702) 938-1330
 Fax: (702) 938-1330

DEPARTMENT OF PUBLIC WORKS

EAST LAS VEGAS
 NEIGHBORHOOD/SENIOR CENTER

DETAIL SHEET



DEPARTMENT OF PUBLIC WORKS
 ARCHITECTURAL SERVICES

400 EAST STEWART AVENUE
 LAS VEGAS, NEVADA 89101
 PHONE: (702) 588-8838
 FAX: (702) 588-8282
 TDD: (702) 588-8908

PROJECT:
 E. Las Vegas Community Center
 CLV Dwg. No. 521-268
 SHI. NO.

33796

33796

C8.01 SHEET 10 of 11

3/27/08 10:00 AM 33796-001-01.dwg 08/02/01 13:38
 33796