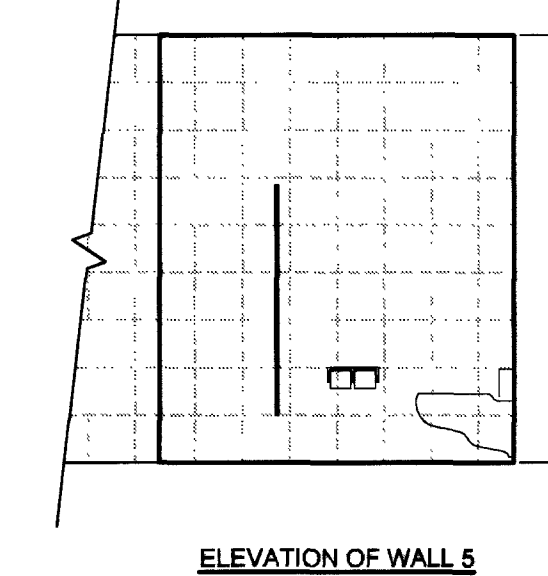
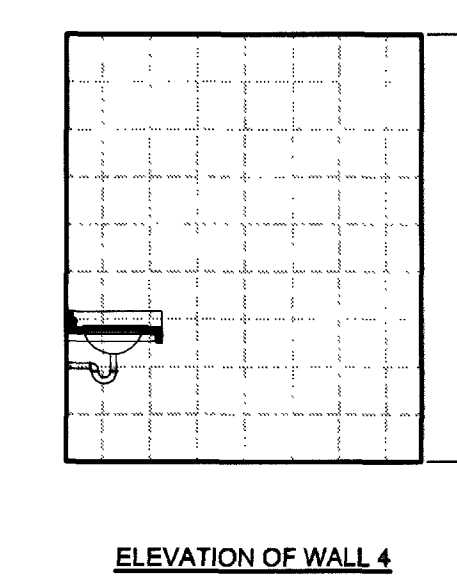
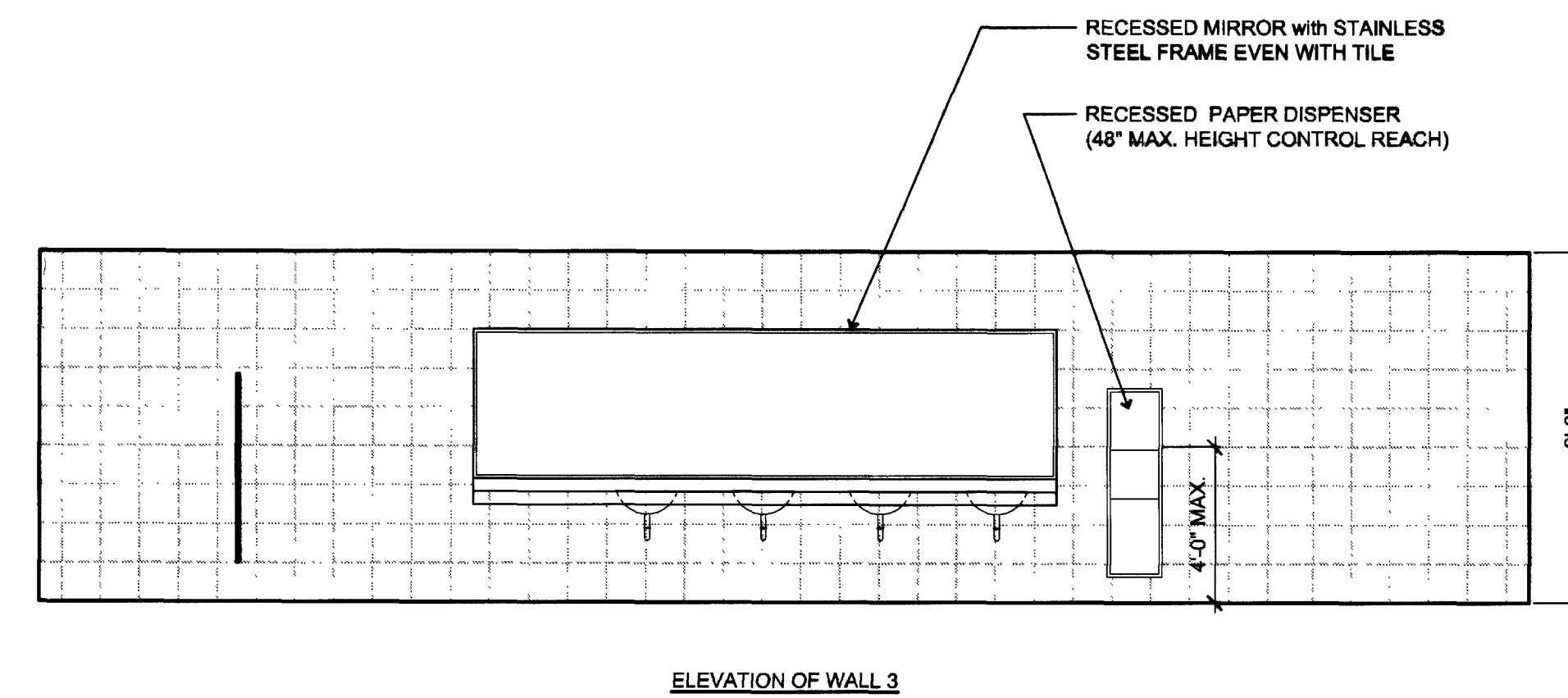
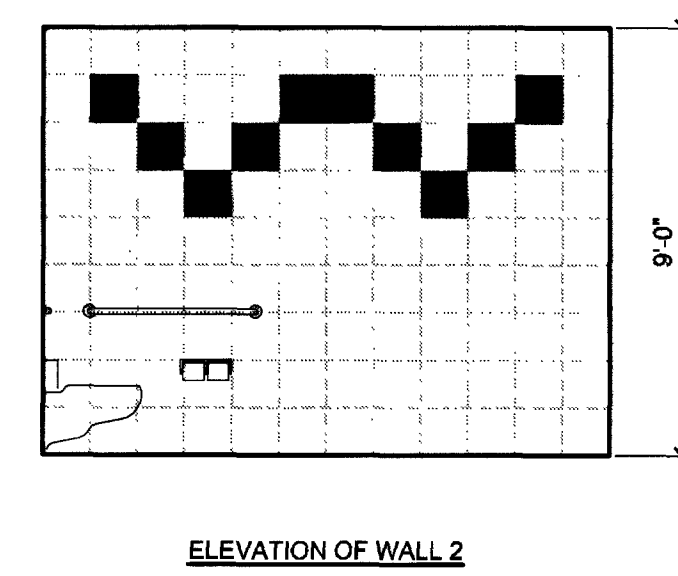
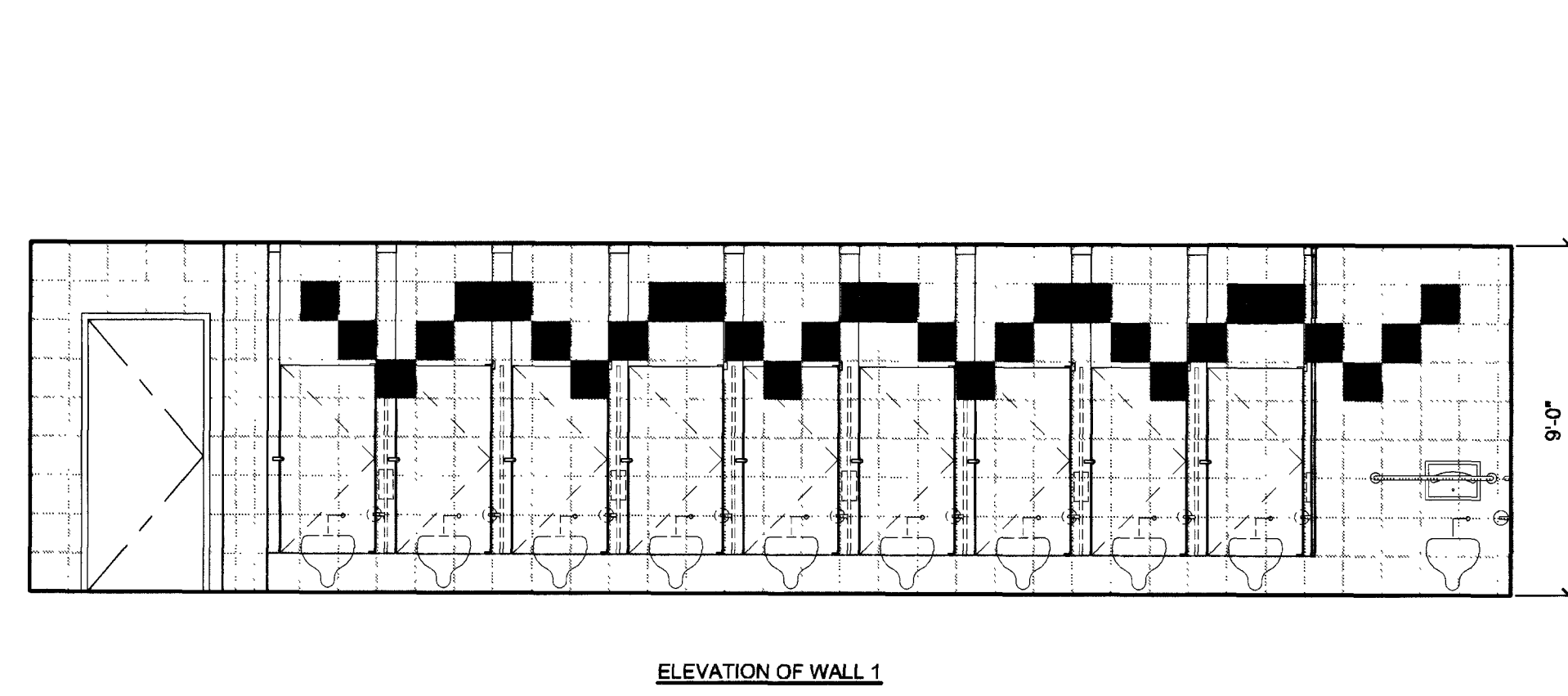
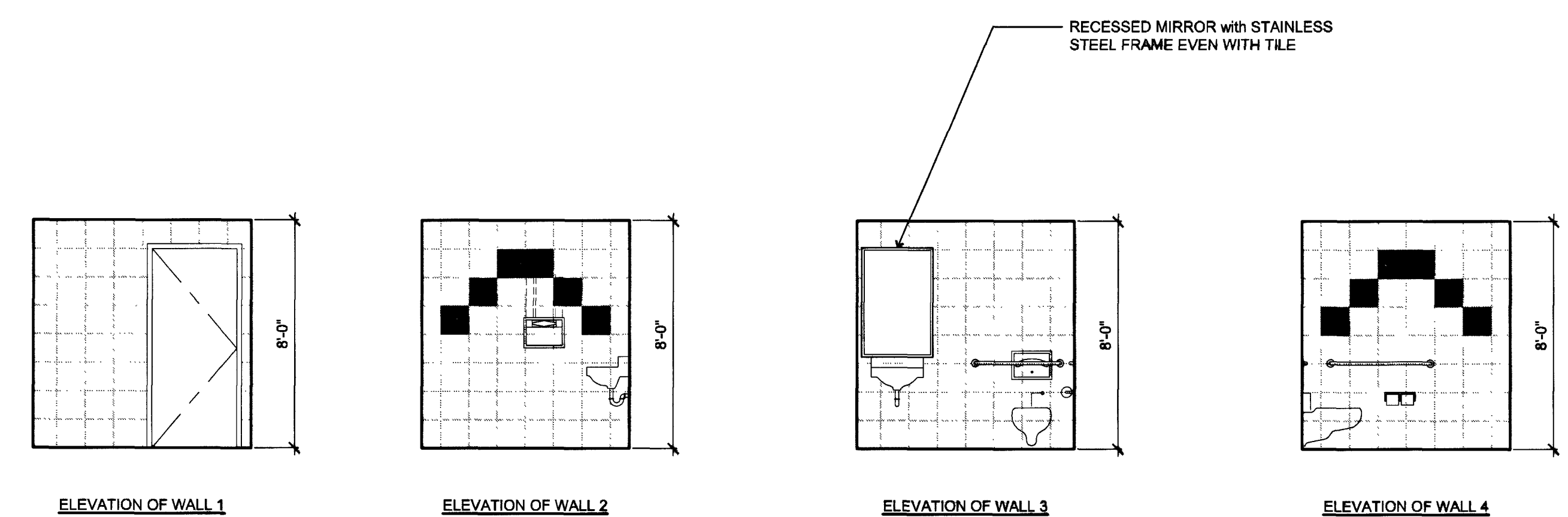
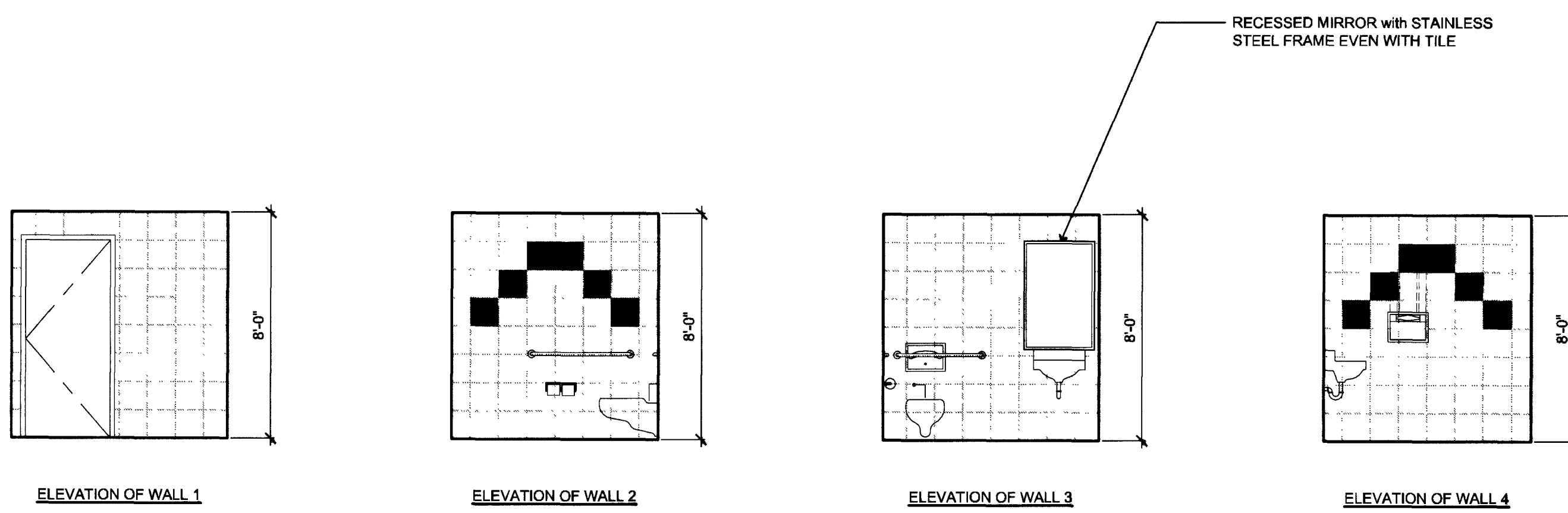


A INTERIOR ELEVATIONS - MEN 157
1/4"=1'-0"

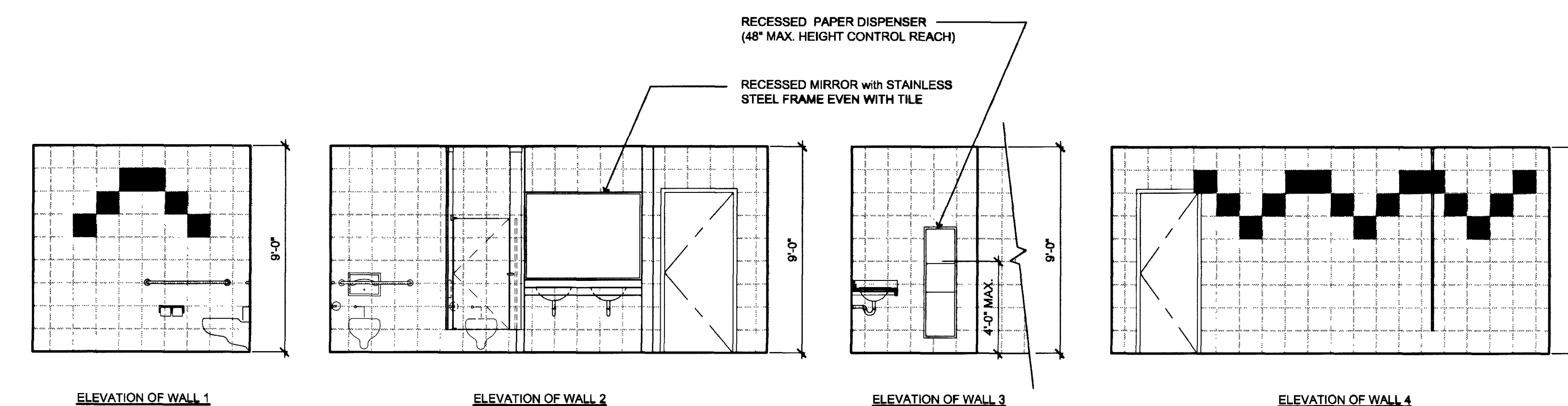
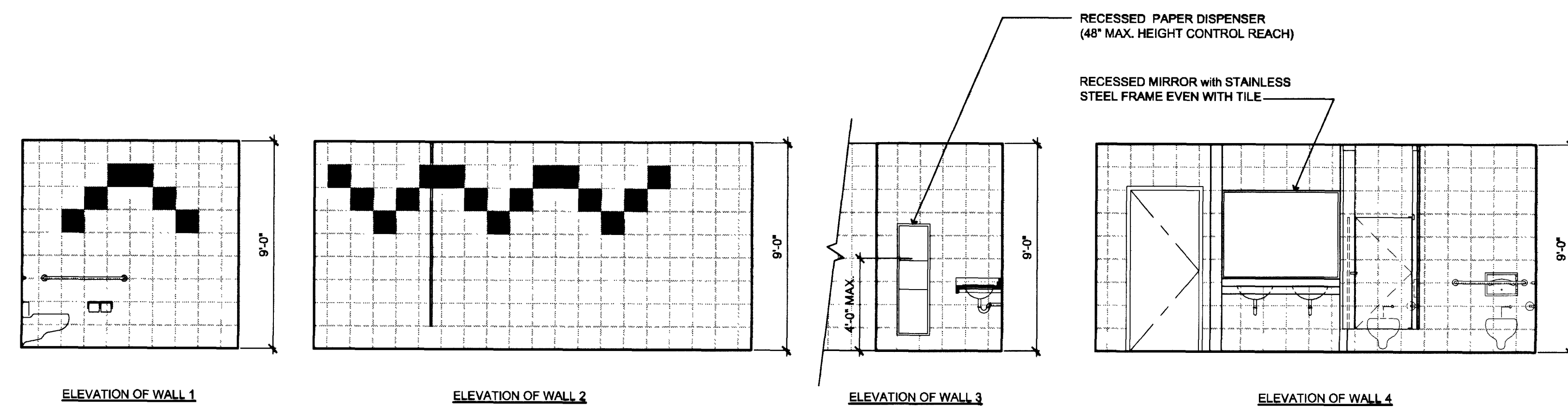


B INTERIOR ELEVATIONS - WOMEN 160
1/4"=1'-0"



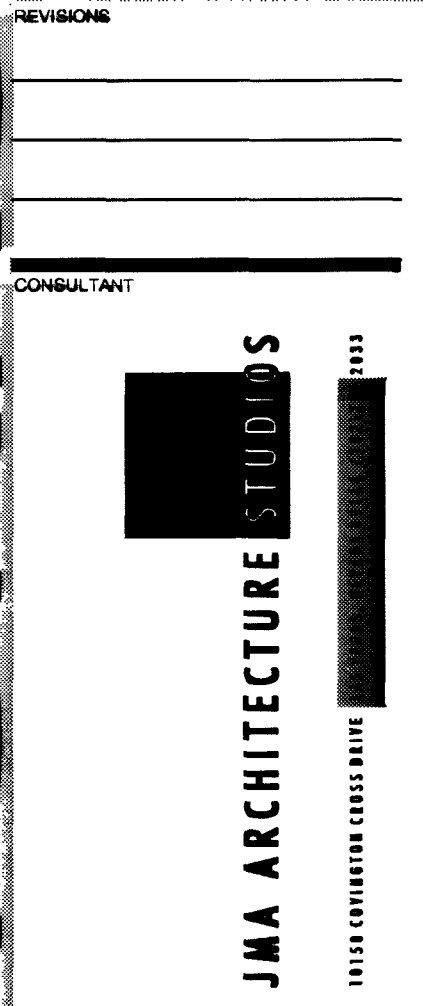
C INTERIOR ELEVATIONS - UNISEX 154
1/4"=1'-0"

D INTERIOR ELEVATIONS - UNISEX 155
1/4"=1'-0"

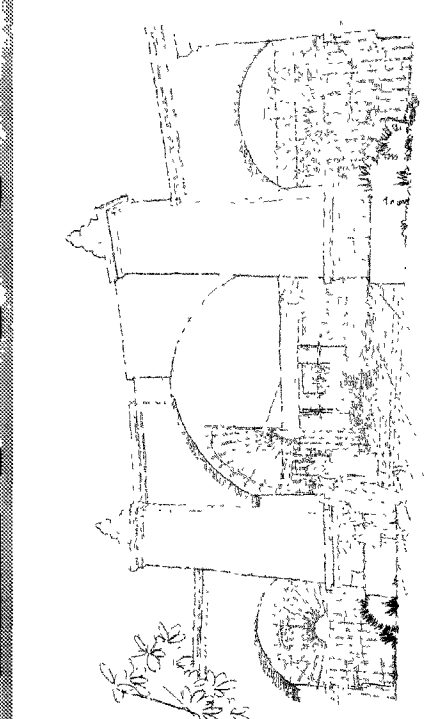


E INTERIOR ELEVATIONS - WOMEN 112
1/4"=1'-0"

F INTERIOR ELEVATIONS - MEN 113
1/4"=1'-0"



DEPARTMENT OF PUBLIC WORKS
East Las Vegas Community Center
Eastern and Stewart
Construction Documents



STAMP

RECORD DRAWING

This record drawing, dated May 12, 2011, has been prepared, in part, based on information furnished by others.

While this information is believed to be reliable, JMA Architecture Studios, cannot warrant its accuracy, and it is not responsible for the accuracy of the record drawing or for any errors or omissions which may have been incorporated and not noted.

Those relying on this record drawing are advised to obtain independent verification of its accuracy before applying the same.

OWNER: CITY OF LAS VEGAS
DEPARTMENT OF PUBLIC WORKS
ARCHITECTURAL SERVICES

400 EAST STEWART AVENUE
LAS VEGAS, NEVADA 89101
PHONE: (702) 258-8228
FAX: (702) 258-8228
TDD: (702) 388-8108

DRAWN: M. Phillips

DATE: August 2, 2011

SCALE:

NO. 01.15301.22

CITY DOC NO. 521-288

SHEET NO. A9.16

DRAWINGS AS INSTRUMENTS OF SERVICE ARE THE PROPERTY OF THE DESIGN PROFESSIONAL. THESE STAMPS OF IDENTIFICATION APPEAR ON THE DRAWINGS AND SPECIFICATIONS PREPARED BY THE DESIGNER. ANY REPRODUCTION OR USE OF THIS DOCUMENT WITHOUT THE WRITTEN CONSENT OF THE DESIGNER IS STRICTLY PROHIBITED. THE CLIENT MAY BE UTILIZED ONLY FOR THE PROJECT FOR WHICH THEY WERE PREPARED AND NOT FOR ANY OTHER PROJECT.