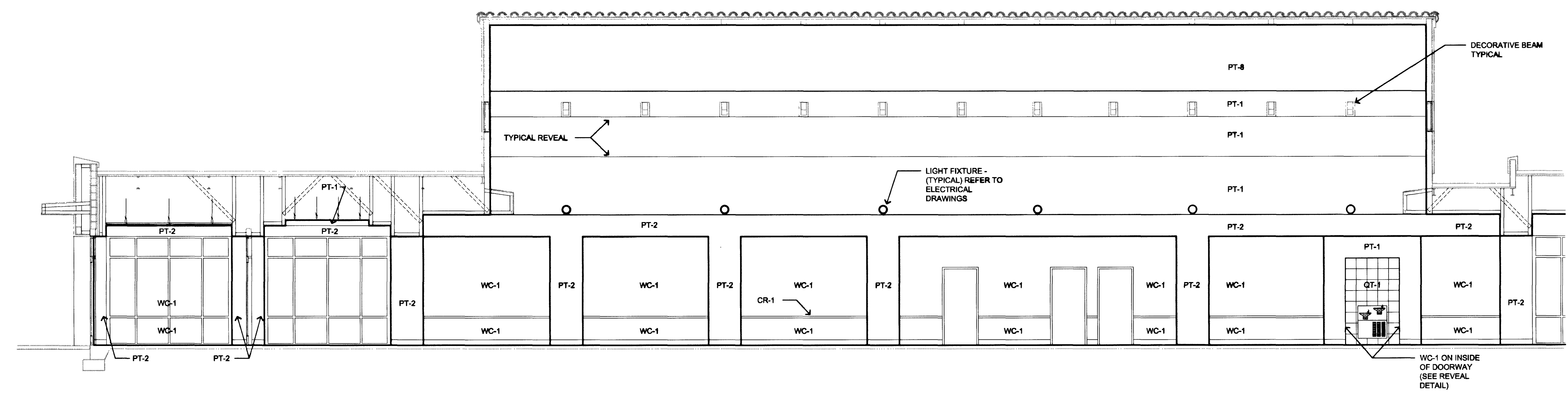


REVISIONS

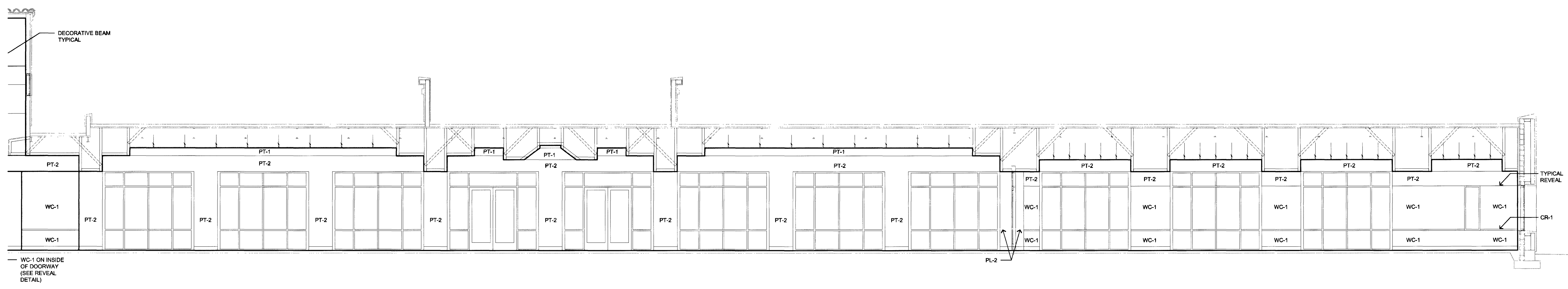
CONSULTANT

**JMA ARCHITECTURE STUDIOS**

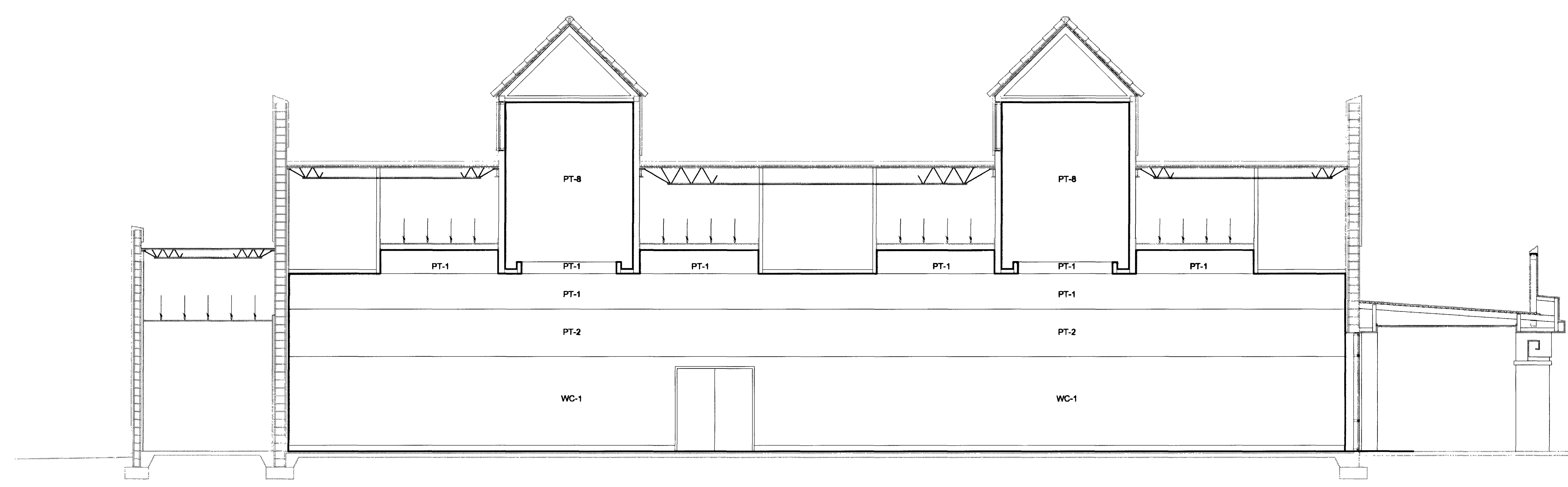
ARCHITECTS



**L** INTERIOR ELEVATION  
3/16"=1'-0"



**M** INTERIOR ELEVATION  
3/16"=1'-0"



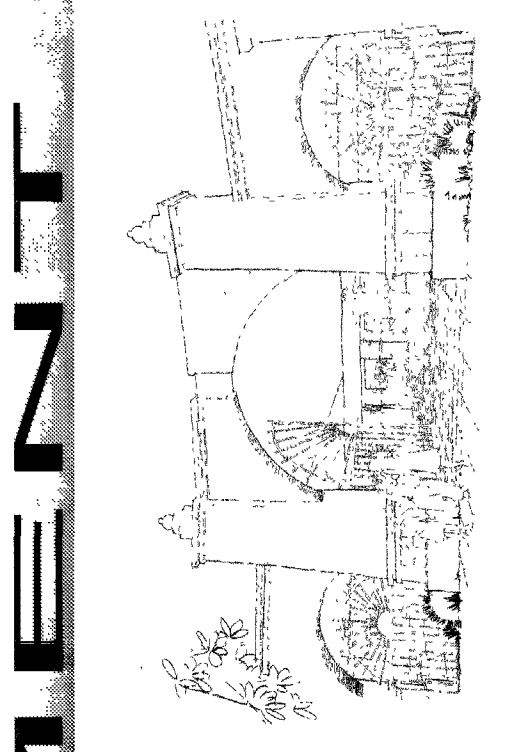
**N** INTERIOR ELEVATION  
3/16"=1'-0"

**DEPARTMENT OF PUBLIC WORKS**

**East Las Vegas Community Center**

Eastern and Stewart

Construction Documents



**STAMP**

**RECORD DRAWING**

This record drawing, issued May 12, 2005, has been prepared, in part, based upon information furnished by others.

While this information is believed to be reliable, JMA Architecture Studios, cannot assume its accuracy, and this is not responsible for the accuracy of the record drawing or for any errors or omissions which may have been incorporated into this record.

Those relying on this record drawing are advised to obtain independent verification of its accuracy before relying on it for any purpose.

**OWNER: CITY OF LAS VEGAS**  
DEPARTMENT OF PUBLIC WORKS  
ARCHITECTURAL SERVICES

400 EAST STEWART AVENUE  
LAS VEGAS, NEVADA 89101  
PHONE: (702) 258-8000  
FAX: (702) 382-3252  
TDD: (702) 386-6100

DESIGNER: N. Niccum

DATE: August 2, 2001

SCALE:

ED NO: 01.15301.22

CU DWG NO: 521-268

DWG NO: **A9.14**