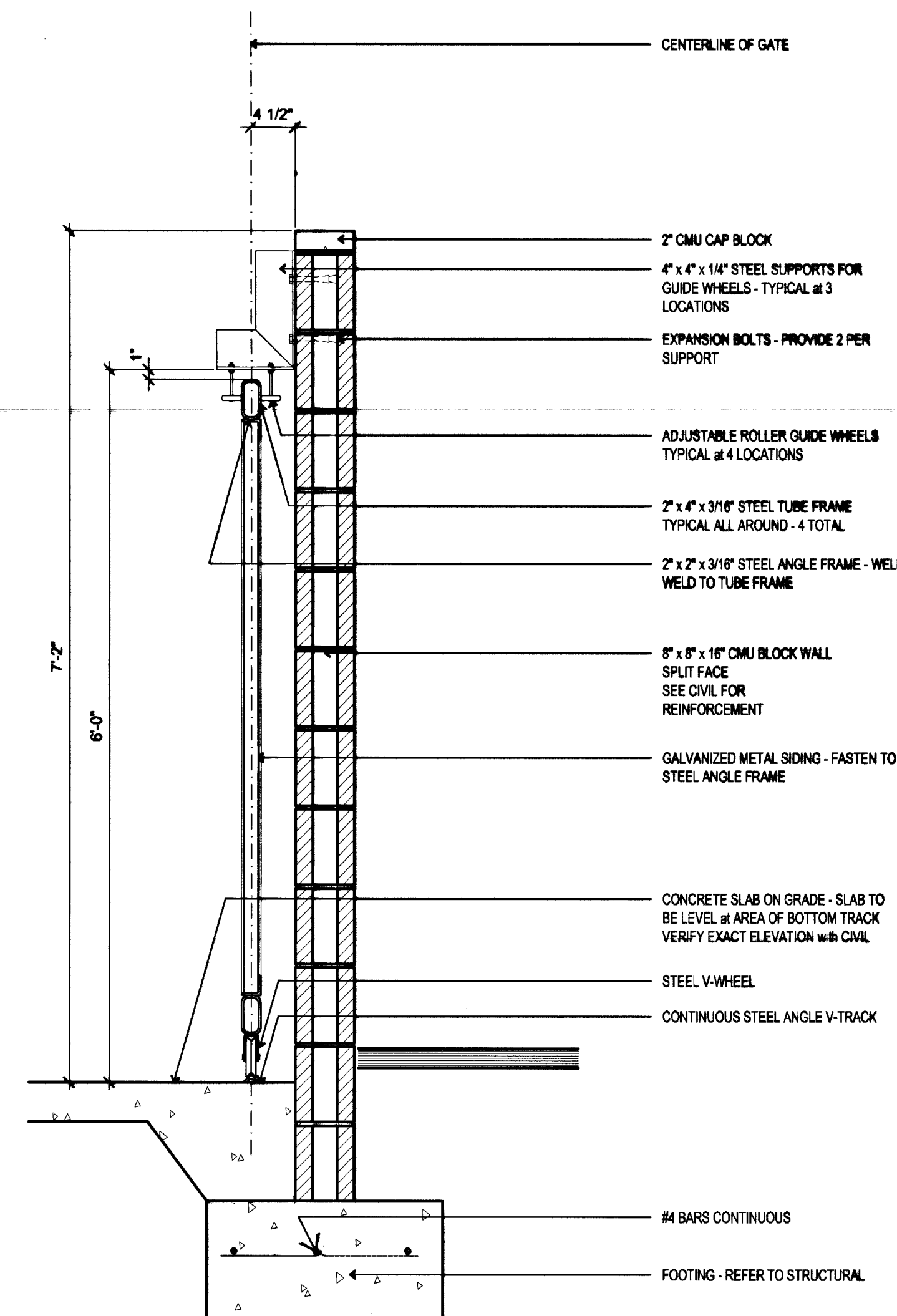


**5 TRASH / TRANSFORMER ENCLOSURE PLAN**

1/4"=1'-0"

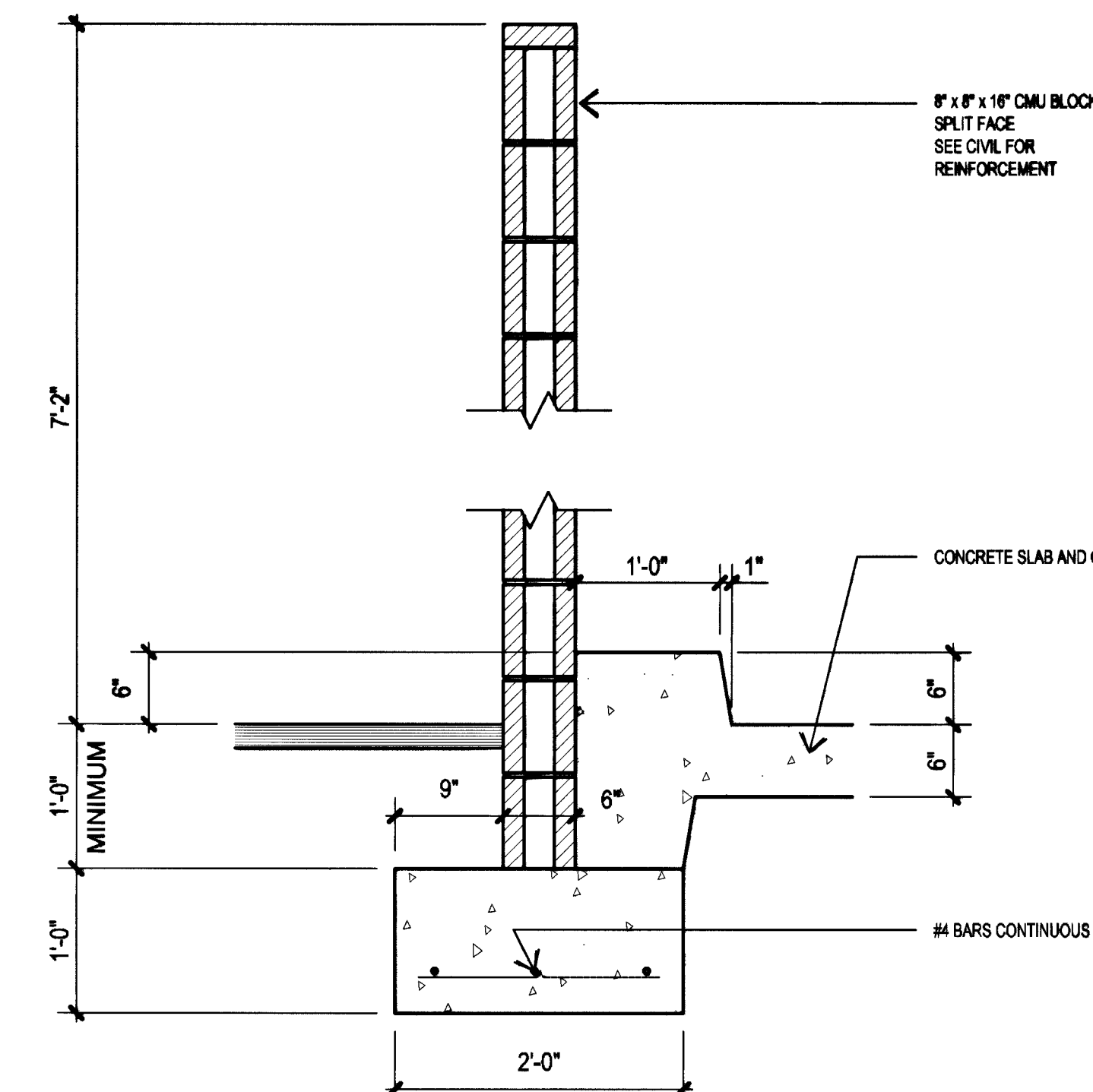
DTL SITE1.DWG 01/30/01 18.58



**7 SECTION**

1"=1'-0"

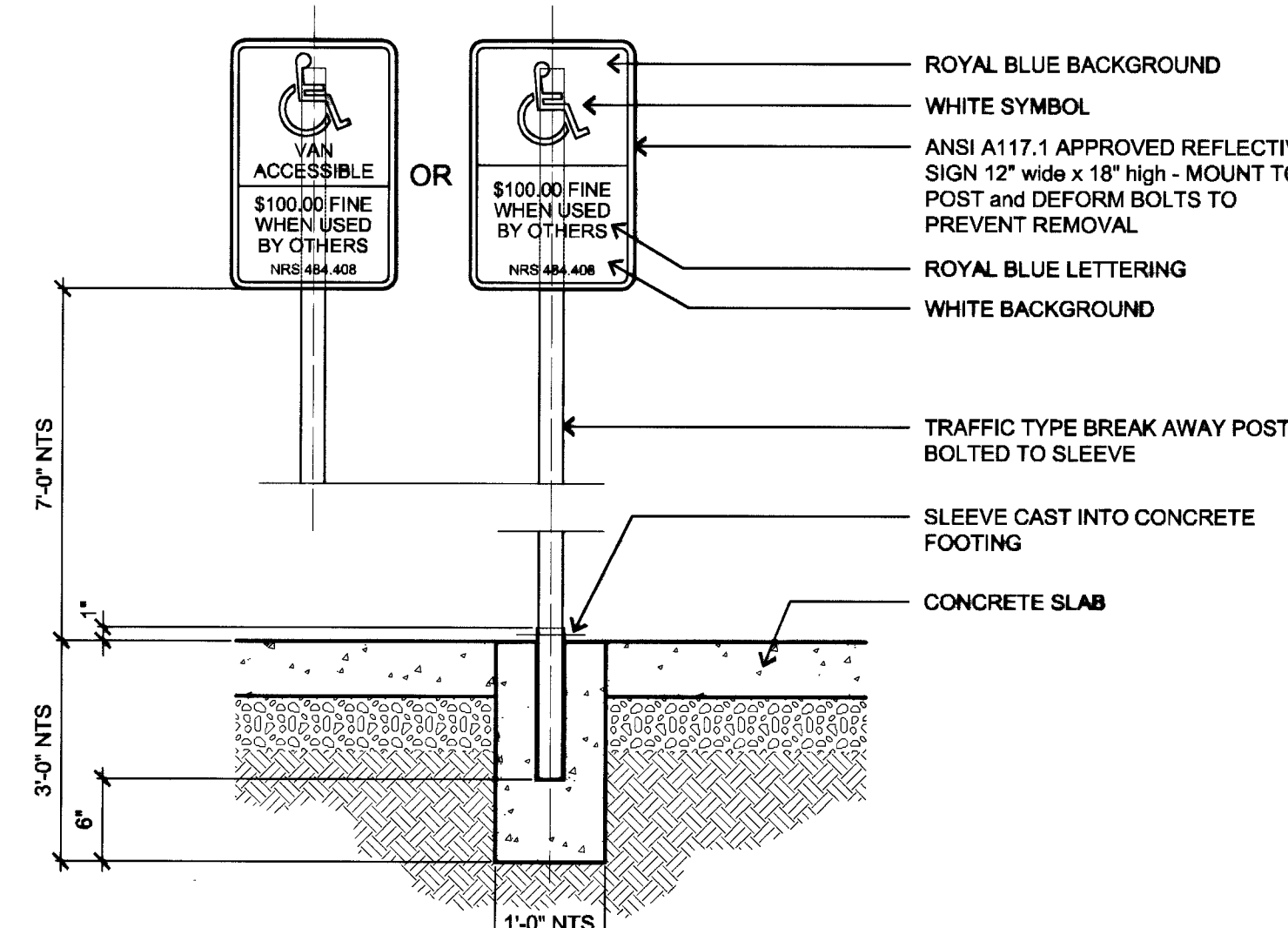
DTL SITE2.DWG 03/26/01 13.10



**8 SECTION**

1"=1'-0"

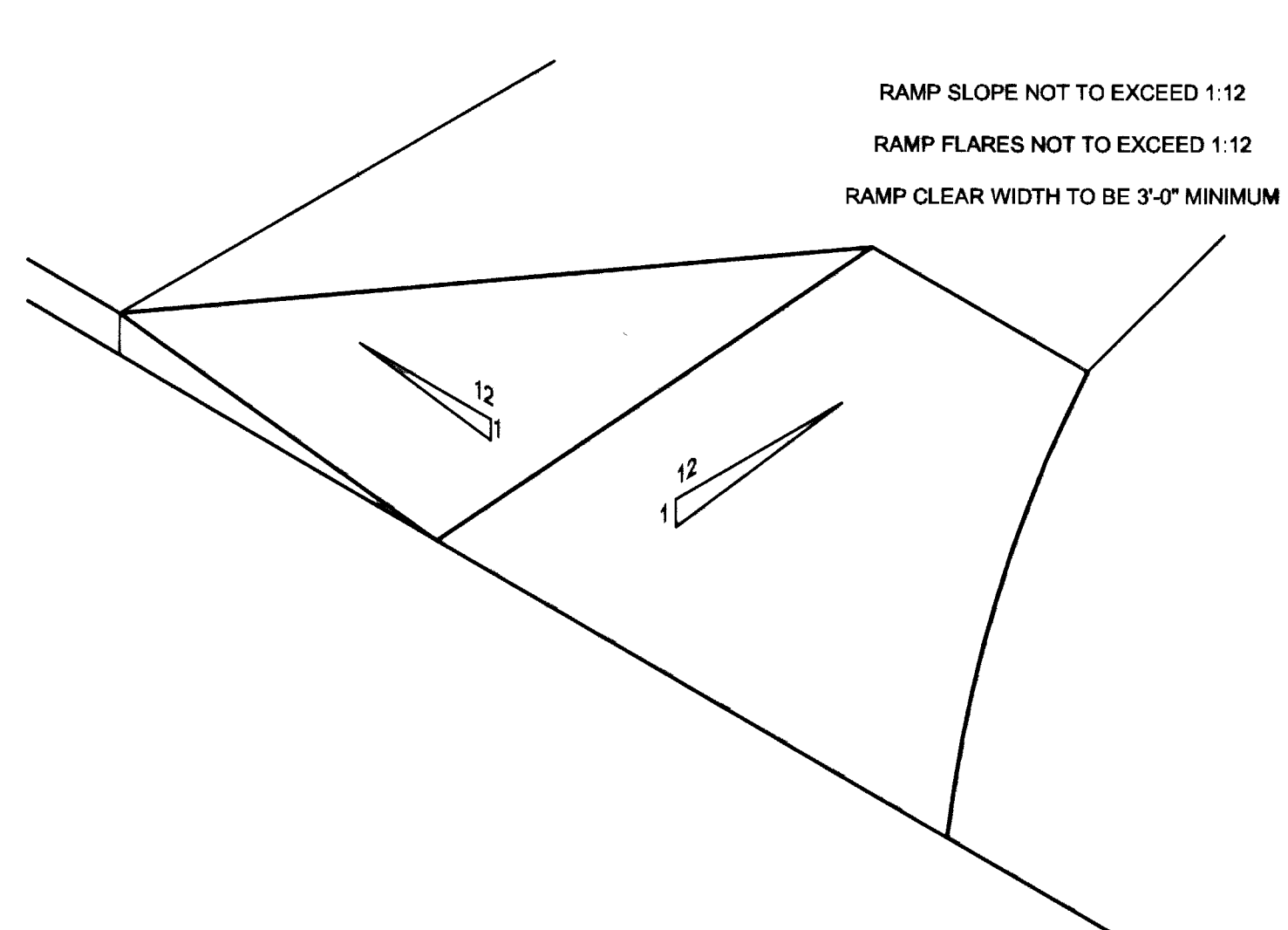
DTL SITE3.DWG 01/30/01 19.03



**9 ELEVATION OF HANDICAP SIGN**

No Scale

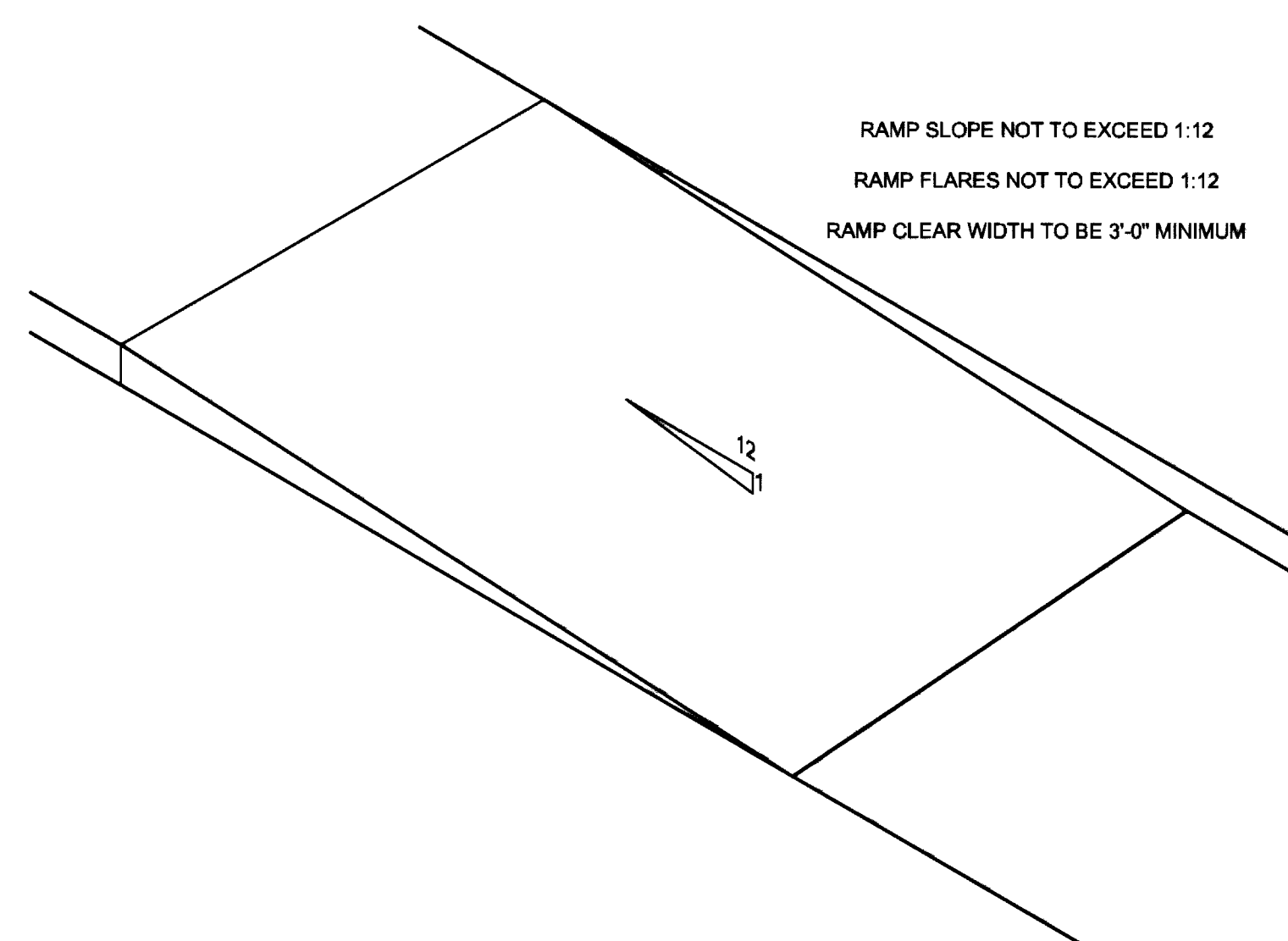
DTL SITE4.DWG 01/31/01 08.51



**10 HANDICAP RAMP**

No Scale

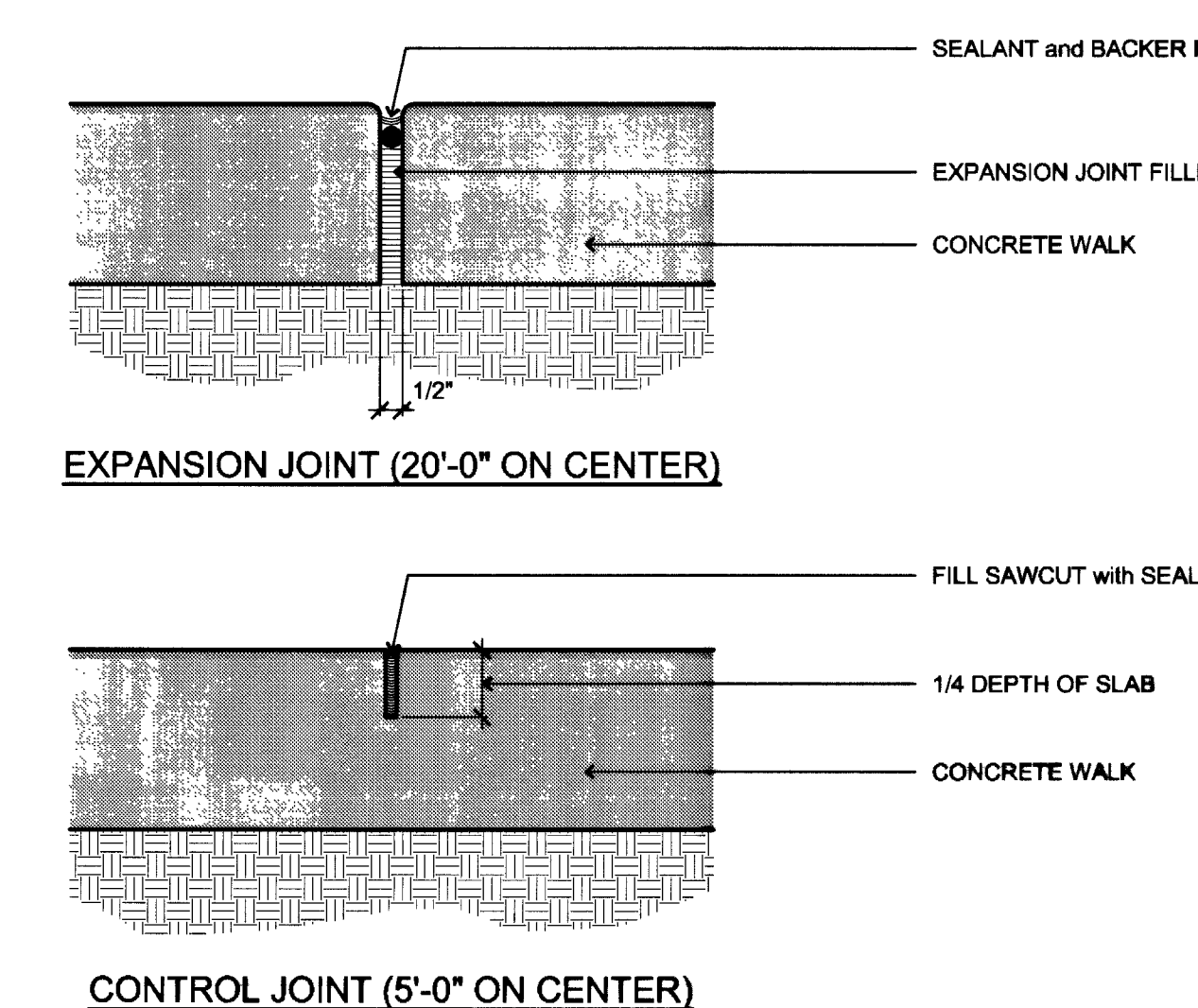
DTL SITE5.DWG 06/11/01 10.01



**11 HANDICAP RAMP**

No Scale

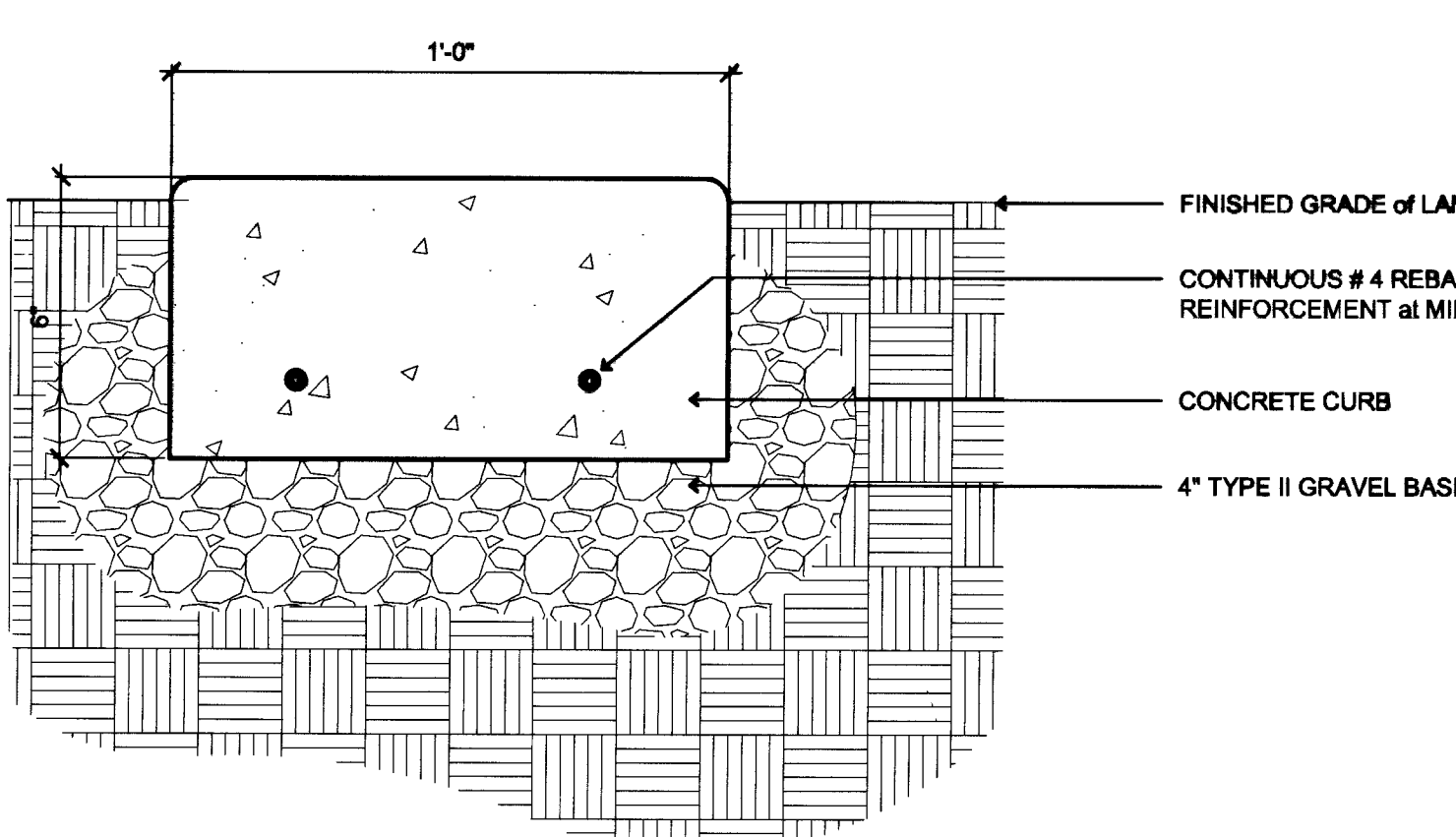
DTL SITE6.DWG 01/31/01 08.54



**12 JOINTS IN CONCRETE WALKS**

3"=1'-0"

DTL SITE7.DWG 01/31/01 08.55



**13 CONCRETE ACCENT CURB**

3"=1'-0"

DTL SITE37.DWG 06/11/01 18.49

55468

**DEPARTMENT OF PUBLIC WORKS**

**East Las Vegas Community Center**  
Eastern and Stewart

Construction Documents

**JMA ARCHITECTURE STUDIOS**

1111

**RECORD DRAWING**

This record drawing was  
May 13, 2003  
has been prepared in accordance with the provisions of the  
Nevada State Board of Professional Engineers and Architects  
Controlled by others.

While this information is believed to be reliable, JMA  
Architecture Studios cannot assume the accuracy and  
this is not responsible for the accuracy of the record  
drawing or for any errors or omissions which may  
have been incorporated into it as a result.

Those relying on this record drawing are advised to  
obtain independent verification of its accuracy before  
relying on it for any purpose.

OWNER: CITY OF LAS VEGAS  
DEPARTMENT OF PUBLIC WORKS  
ARCHITECTURAL SERVICES

400 EAST STEWART AVENUE  
LAS VEGAS, NEVADA 89101  
PHONE: (702) 228-4938  
FAX: (702) 368-3232  
TDD: (702) 368-3108

Name: N. Niccum  
Title:  
Date: August 2, 2001  
Scale:  
Sheet No: 01.15301.22  
Drawing No: 521-268  
Sheet No:

**A1.31**