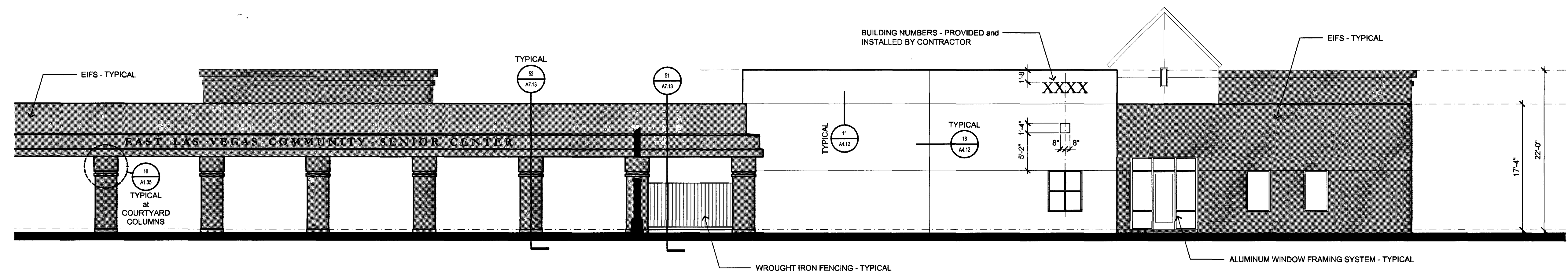
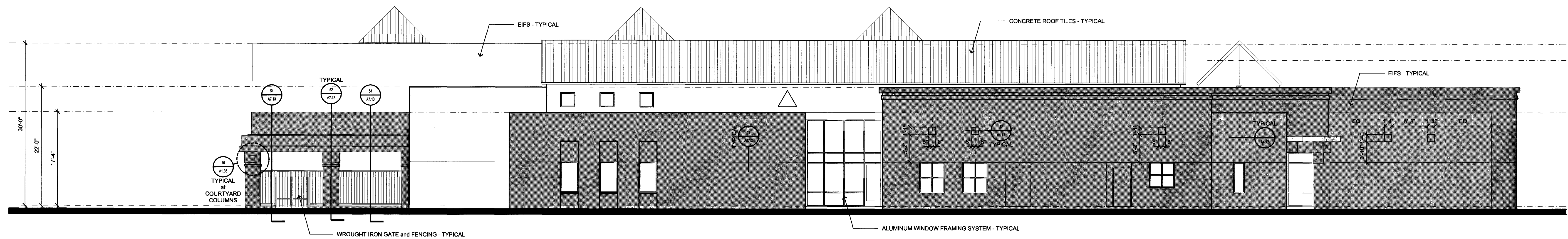


C1 PARTIAL EXTERIOR ELEVATION
1/8"=1'-0"



C2 PARTIAL EXTERIOR ELEVATION
1/8"=1'-0"



D EXTERIOR ELEVATION
1/8"=1'-0"

EXTERIOR COLOR SCHEDULE

| SHADING | DESIGNATION | COLOR | DESCRIPTION / LOCATION |
|---------|-------------|---|------------------------|
| | PT-4 | #8181W CINNAMON SPICE #A1A1A1 MAISON BLANCHE | EIFS FIELD COLOR |
| | PT-5 | #6254M CINNAMON SPICE #A1A1A1 FRAZEE | EIFS FIELD COLOR |
| | PT-7 | #8174M FERLAND #A1A1A1 FRAZEE | EIFS FIELD COLOR |

| SHADING | DESIGNATION | COLOR | DESCRIPTION / LOCATION |
|---------|-------------|--------------------------------------|---------------------------------|
| | PT-6 | #870SD BARN RAFTER #A1A1A1 FRAZEE | METAL |
| | PT-6 | #870SD BARN RAFTER #A1A1A1 FRAZEE | ALUMINUM WINDOW MULLIONS |
| | PT-6 | #870SD BARN RAFTER #A1A1A1 FRAZEE | IRONWORK (FENCING, GATES, ETC.) |

ELEVATION GENERAL NOTES

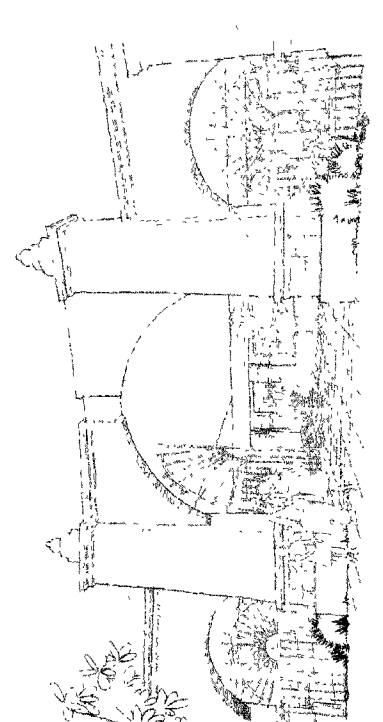
- REFER TO WALL and BUILDING SECTIONS FOR MORE INFORMATION
- REFER TO DOOR SCHEDULE and WINDOW ELEVATIONS FOR MORE INFORMATION
- ALL SURFACES TO BE EIFS - TYPICAL UNLESS NOTED OTHERWISE



| REVISIONS |
|----------------------|
| 11/23/01 Revision |
| 1/4/02 Wall Revision |



DEPARTMENT OF PUBLIC WORKS
East Las Vegas Community Center
 Eastern and Stewart
 Construction Documents



STAMP
RECORD DRAWING
This record drawing, dated May 12, 2001, has been prepared in part based upon information furnished by others.

While the information is believed to be reliable, JMA Architecture Services, Inc. cannot assume its accuracy, and it is not responsible for the accuracy of the record drawing or for any errors or omissions which may have been incorporated into the work.

Those relying on this record drawing are advised to obtain independent verification of its accuracy before making their own plans.

OWNER: CITY OF LAS VEGAS
 DEPARTMENT OF PUBLIC WORKS
 ARCHITECTURAL SERVICES
 400 EAST STEWART AVENUE
 LAS VEGAS, NEVADA 89101
 PHONE: (702) 228-6838
 FAX: (702) 388-5222
 TDD: (702) 388-0108

DATE: August 2, 2001
 SCALE:
 SHEET NO: 01-15301-22
 DRAWING NO: 521-298

A5.02