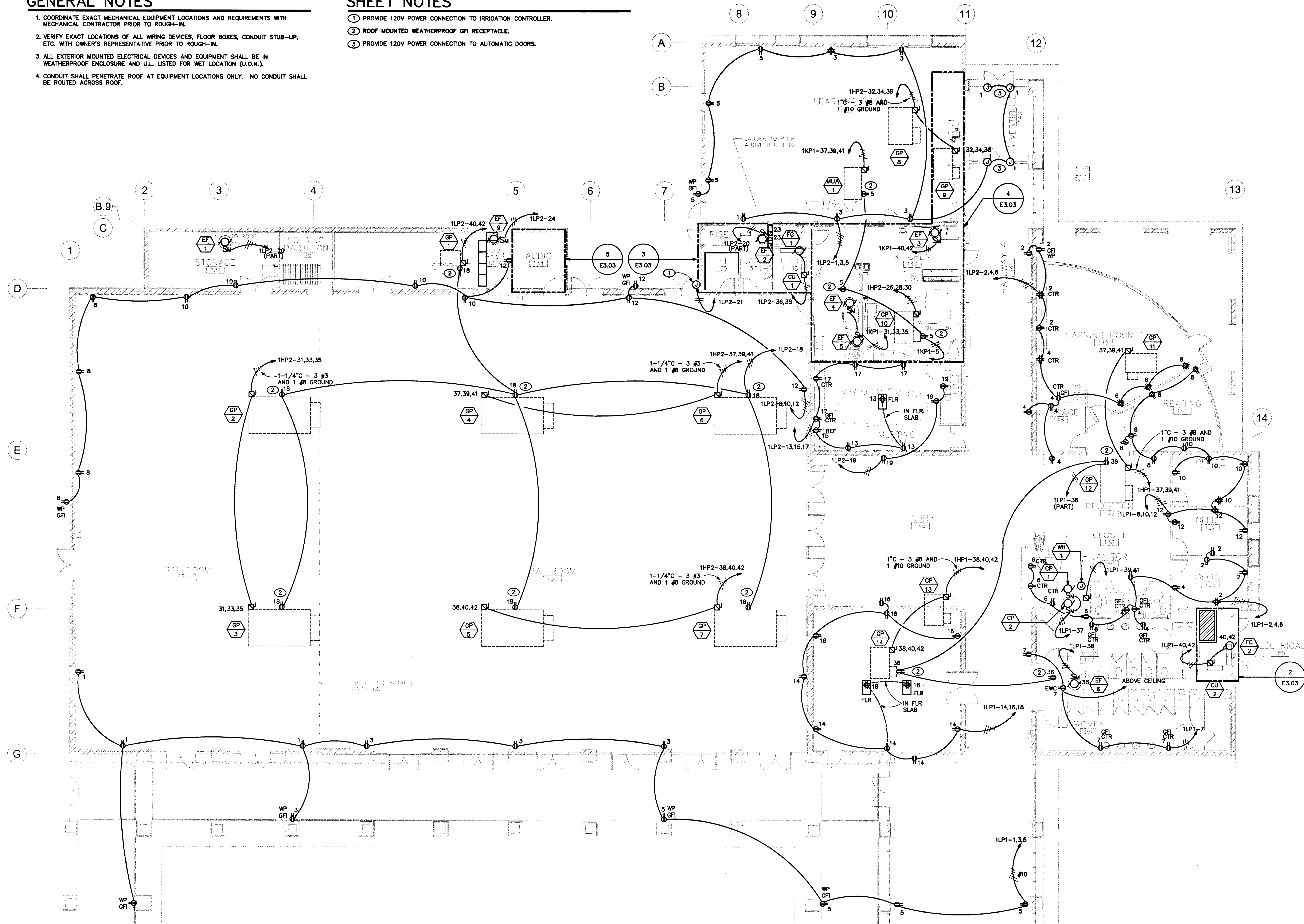


GENERAL NOTES

- COORDINATE EXACT MECHANICAL EQUIPMENT LOCATIONS AND REQUIREMENTS WITH MECHANICAL CONTRACTOR PRIOR TO ROUGH-IN.
- VERIFY EXACT LOCATIONS OF ALL WIRING DEVICES, FLOOR BOXES, CONDUIT STUB-UP, ETC. WITH OWNER'S REPRESENTATIVE PRIOR TO ROUGH-IN.
- ALL EXTERIOR MOUNTED ELECTRICAL DEVICES AND EQUIPMENT SHALL BE IN WEATHERPROOF ENCLOSURE AND U.L. LISTED FOR WET LOCATION (U.O.N.).
- CONDUIT SHALL PENETRATE ROOF AT EQUIPMENT LOCATIONS ONLY. NO CONDUIT SHALL BE ROUTED ACROSS ROOF.

SHEET NOTES

- PROVIDE 120V POWER CONNECTION TO IRRIGATION CONTROLLER.
- ROOF MOUNTED WEATHERPROOF GFI RECEPTACLE.
- PROVIDE 120V POWER CONNECTION TO AUTOMATIC DOORS.



POWER PLAN
SCALE: 1/8" = 1' - 0"

EQUIPMENT CONNECTION SCHEDULE															
TAG	DESCRIPTION	FLA/W	VOLT/PH	DISC SW	FUSES	FEEDER SIZE (SEE FEEDER SCHEDULE)	REMARKS	TAG	DESCRIPTION	FLA/W	VOLT/PH	DISC SW	FUSES	FEEDER SIZE (SEE FEEDER SCHEDULE)	REMARKS
GP-1	GAS PACK #1	15.7A	208/1	30/2	FOR MANUFACTURER'S SPECIFICATIONS	[021]	-	EF-4	EXHAUST FAN #4	3/4 HP	208/3	MANUAL MOTOR STARTER	NA	[023]	-
GP-2 THRU GP-7	GAS PACKS #2 THRU #7	39.8A	480/3	60/3	FOR MANUFACTURER'S SPECIFICATIONS	SEE PLANS	-	EF-5	EXHAUST FAN #5	1.0 HP	208/3	MANUAL MOTOR STARTER	NA	[023]	-
GP-8	GAS PACK #8	26.5A	480/3	60/3	FOR MANUFACTURER'S SPECIFICATIONS	[043]	-	EF-6	EXHAUST FAN #6	1/4 HP	120/1	MANUAL MOTOR STARTER	NA	[021]	NOTE 1
GP-9, 13, 14	GAS PACKS #9, 13, 14	12.3A	480/3	30/3	FOR MANUFACTURER'S SPECIFICATIONS	SEE PLANS	-	EF-9	EXHAUST FAN #9	1/8 HP	120/1	MANUAL MOTOR STARTER	NA	[021]	-
GP-10	GAS PACK #10	19.2A	480/3	30/3	FOR MANUFACTURER'S SPECIFICATIONS	[031]	-	MUA-1	MAKE UP AIR UNIT #1	3.0 HP	208/3	30/3	FOR MANUFACTURER'S SPECIFICATIONS	[023]	-
GP-11	GAS PACK #11	15.2A	480/3	30/3	FOR MANUFACTURER'S SPECIFICATIONS	SEE PLANS	-	CU-1 & FC-1	COND. UNIT #1 & FAN COIL UNIT #1	17.9A	208/1	30/2	FOR MANUFACTURER'S SPECIFICATIONS	[031]	-
GP-12	GAS PACK #12	23.3A	480/3	30/3	FOR MANUFACTURER'S SPECIFICATIONS	SEE PLANS	-	CU-2 & FC-2	COND. UNIT #2 & FAN COIL UNIT #2	14.8A	208/1	30/2	FOR MANUFACTURER'S SPECIFICATIONS	[021]	-
EF-1 & EF-2	EXHAUST FANS #1 AND 2	1/8 HP	120/1	MANUAL MOTOR STARTER	NA	[021]	NOTE 1	WH-1	WATER HEATER #1	4.5 KW	208/1	30/2	FOR MANUFACTURER'S SPECIFICATIONS	[031]	-
EF-3	EXHAUST FAN #3	1/4 HP	208/1	MANUAL MOTOR STARTER	NA	[021]	-	CP-1	CIRCULATION PUMP #1	99 W	120/1	MANUAL MOTOR STARTER	NA	[021]	-
								CP-2	CIRCULATION PUMP #2	99 W	120/1	MANUAL MOTOR STARTER	NA	[021]	-

NOTES: SEE S-13
1. PROVIDE TORK #W100 TIME CLOCK ADJACENT TO PANEL AND ROUTE CIRCUIT FOR FAN TO PANEL THRU TIME CLOCK.



REVISIONS
CONSULTANT
JMA ARCHITECTURE STUDIOS
INTERNATIONAL ARCHITECTURAL FIRM

East Las Vegas Community Center
Eastern and Stewart

HARRIS
PROJECT NO. 2008030
CHECKED BY: E.J. HARRIS
DRAWN BY: D. ELSCHER

OWNER: CITY OF LAS VEGAS
DEPARTMENT OF PUBLIC WORKS
ARCHITECTURAL SERVICES

RECORD DRAWINGS
Date: 5/21/03 This record drawing has been prepared in part, based upon information furnished by others. While the information is believed to be reliable, Harris Consulting Engineers P.C. cannot assume it's accuracy, and is not responsible for any errors or omissions which may have been incorporated into it as a result. Those relying on this record drawing are advised to obtain independent verification of it's accuracy before applying it for any purpose.

DATE: August 2, 2001
SCALE: 1/8" = 1'-0"
REVISION: 01:15301.22
DRAWING NO: 521-268

E3.01