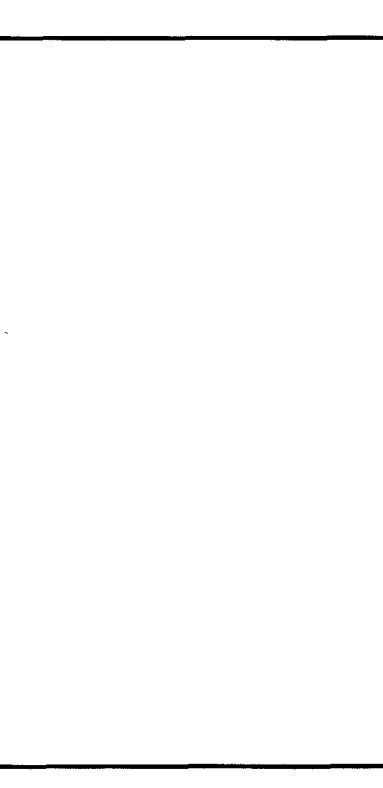




AS-BUILTS 5-30-03

JMA ARCHITECTURE
1100 EAST STEWART AVENUE
LAS VEGAS, NV 89101
PHONE: (702) 386-8338
FAX: (702) 386-8338
TDD: (702) 386-8108

East Las Vegas Community Center
Eastern and Stewart



OWNER: CITY OF LAS VEGAS
DEPARTMENT OF PUBLIC WORKS
ARCHITECTURAL SERVICES

400 EAST STEWART AVENUE
LAS VEGAS, NEVADA 89101
PHONE: (702) 386-8338
FAX: (702) 386-8338
TDD: (702) 386-8108

DRAWN: DAN M.
TITLE: LVCC
DATE: AUGUST 2, 2001
SCALE: 1/4" = 1'-0"

PROJECT NO: 521-268
FOODSERVICE EQUIPMENT
MECHANICAL PLAN &
BUILDING CONDITIONS

FS-5

MECHANICAL CONNECTION SCHEDULE

- M-7 8" X 8" EXHAUST DUCT, 450-CFM AT 0.4-IN/WC STATIC PRESSURE, 7, FROM CEILING, CONNECTION AT 8'-7 1/2"-AFF; ALL DUCTWORK PER NFPA-96.
- M-38 10" X 11" EXHAUST DUCT, 1250-CFM AT 0.5-IN/WC STATIC PRESSURE, 38, FROM CEILING, CONNECTION AT 8'-7 1/2"-AFF; ALL DUCTWORK PER NFPA-96.
- M-39 18" X 18" EXHAUST DUCT, 1950-CFM AT 0.45-IN/WC STATIC PRESSURE, 39, FROM CEILING, CONNECTION AT 8'-7 1/2"-AFF; ALL DUCTWORK PER NFPA-96.

LEGEND - MECHANICAL CONNECTIONS

- ▣ EXHAUST DUCT CONNECTION
- ▣ MAKE-UP AIR DUCT CONNECTION
- DIRECT VENT, GRAVITY TYPE

SPECIAL BUILDING CONDITIONS

- J-11 5/8" THICK PLYWOOD WALLBACKING FOR WALL MOUNTED DOUBLE POT RACK. BACKING SHELL EXTEND BETWEEN DIMENSIONS -AFF AS SHOWN ON KEYNOTE CALLOUT
- J-2 5/8" THICK PLYWOOD WALLBACKING FOR WALL MOUNTED HAND SINK. BACKING SHELL EXTEND BETWEEN DIMENSIONS -AFF AS SHOWN ON KEYNOTE CALLOUT.
- J-5 5/8" THICK PLYWOOD WALLBACKING FOR WALL MOUNTED DOUBLE SHELVES. BACKING SHELL EXTEND BETWEEN DIMENSIONS -AFF AS SHOWN ON KEYNOTE CALLOUT
- J-6 5/8" THICK PLYWOOD WALLBACKING FOR WALL MOUNTED MICROWAVE SHELF. BACKING SHELL EXTEND BETWEEN DIMENSIONS -AFF AS SHOWN ON KEYNOTE CALLOUT
- J-7 5/8" THICK PLYWOOD WALLBACKING FOR WALL MOUNTED DISHTABLE RACK SHELF. BACKING SHELL EXTEND BETWEEN DIMENSIONS -AFF AS SHOWN ON KEYNOTE CALLOUT
- J-9 5/8" THICK PLYWOOD WALLBACKING FOR WALL MOUNTED PRE-RINSE ASSEMBLY. BACKING SHELL EXTEND BETWEEN DIMENSIONS -AFF AS SHOWN ON KEYNOTE CALLOUT
- K GALV WALLBACKING FOR EXHAUST HOOD AND FIRE SUPPRESSION SYSTEM.
- L G.C. PROVIDE 14 GA. STAINLESS STEEL WALL FLASHING FROM TOP OF COVERED BASE TO UNDERSIDE OF EXHAUST HOOD.

FINISH SCHEDULE

NOTE

1. FLOORS TO BE QUARRY TILE WITH CARBORUNDUM OR NON SLIP SURFACE W.3/8" CONTINUOUS RADIUS AT FLOOR
2. WALLS TO BE LIGHT COLORED SMOOTH PANELING (F.R.P. BOARD) UP TO CEILING HEIGHTS FROM COVERED TILE AT JUNCTURE OF WALLS
3. CEILING TO BE LIGHT COLORED NON-FISSURED, WASHABLE COMMERCIAL GRADE CEILING TILE
4. STAINLESS STEEL CONTRACTOR TO FLASH WALL BEHIND ALL COOKING WARE WASHING & SCULLERY LINES WITH STAINLESS STEEL FROM COVE TILE TO EXHAUST HOOD PER CODE, NOTE BUILDING CONDITION PLAN

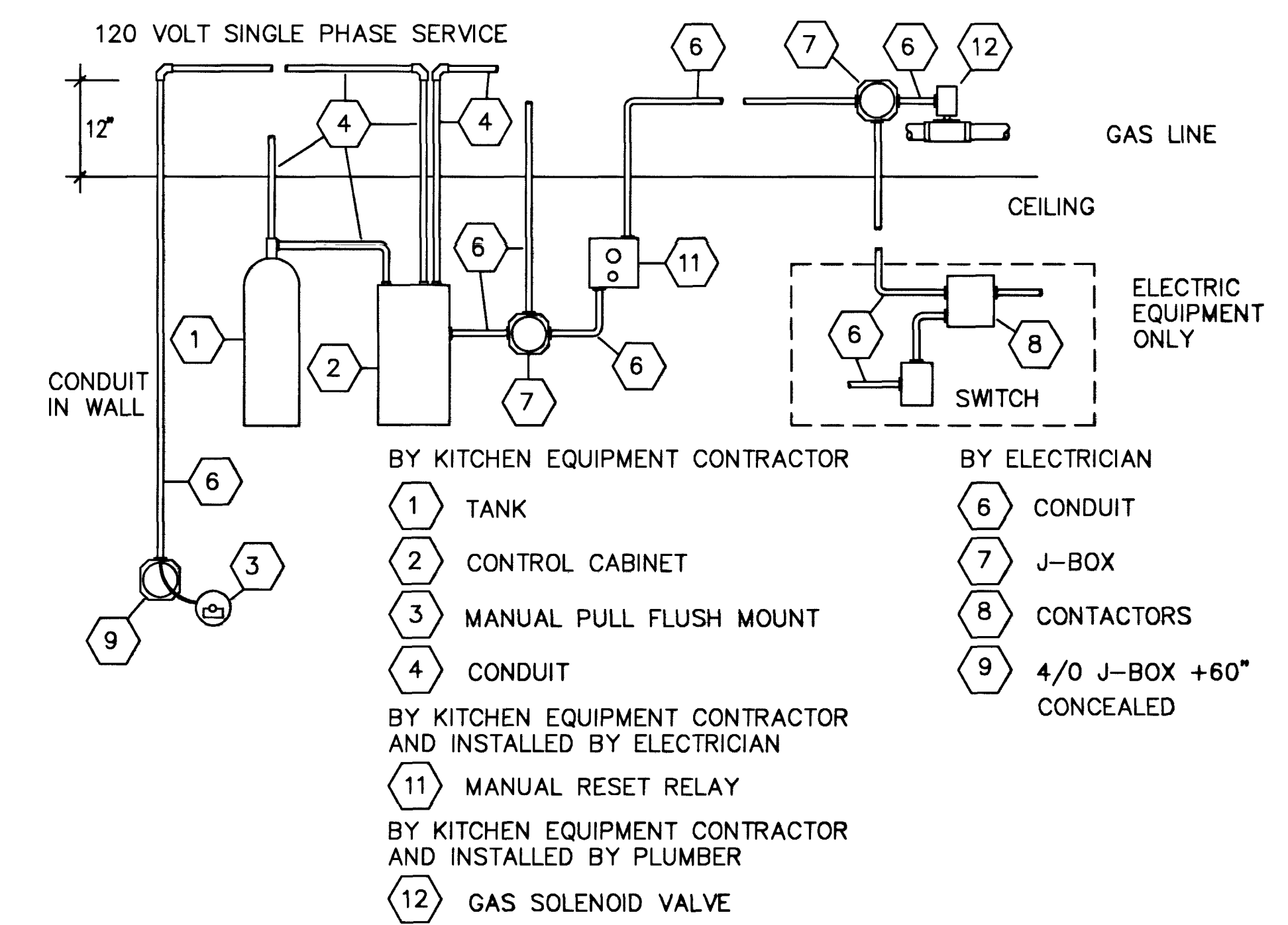


DIAGRAM - FIRE PROTECTION SYSTEM

