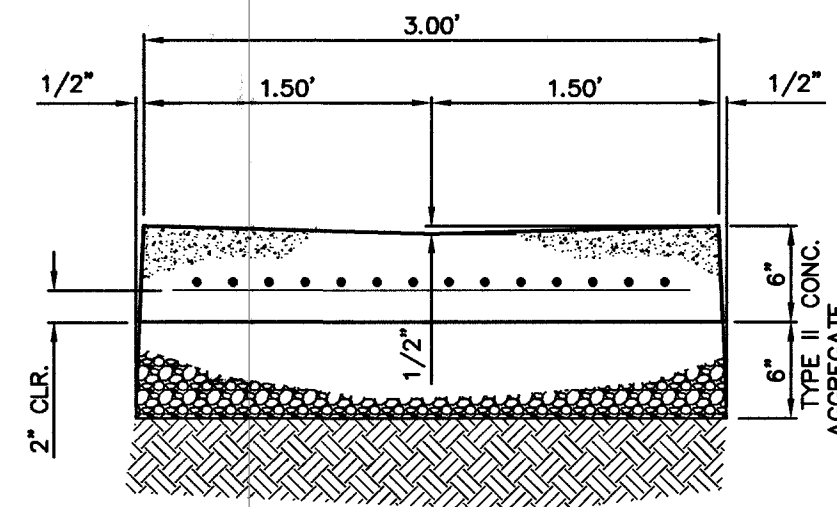


NOTES:

1. ALL CONCRETE SHALL BE CLASS-B.
2. FINISHED ASPHALT CONCRETE SURFACE TO BE FLUSH WITH CROSS GUTTER LIP.
3. WEAKENED PLANE JOINT PER CLARK COUNTY STANDARD DRAWING NO. 234 EVERY 20' (TYP).
4. EXPANSION JOINT (1/2") EVERY 100' MAX. PER CLARK COUNTY STANDARD DRAWING NO. 234.
5. TYPE I OR TYPE II AGGREGATE BASE COMPACTED TO 90%.
6. 6 X 6 WELDED WIRE FABRIC (2" CLEAR FROM BOTTOM)
7. REVERSE CROWN DEPTH OF 1/2" (TYP).

CLARK COUNTY SPECIFICATION REFERENCE:
 302 AGGREGATE BASE 501 CONCRETE
 502 CONCRETE STRUCTURES 505 REINFORCING STEEL
 707 EXPANSION JOINT MATERIAL

A 2' VALLEY GUTTER
 C12 (ON SITE) 1" = 1'-0"

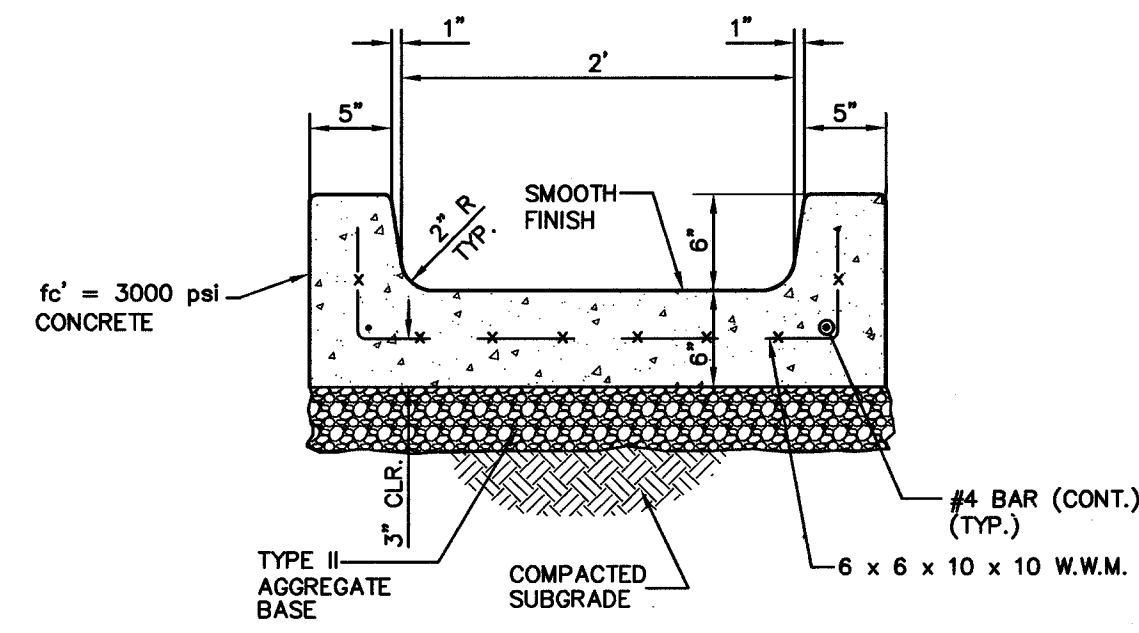


NOTES:

1. ALL CONCRETE SHALL BE CLASS-B.
2. FINISHED ASPHALT CONCRETE SURFACE TO BE FLUSH WITH CROSS GUTTER LIP.
3. WEAKENED PLANE JOINT PER CLARK COUNTY STANDARD DRAWING NO. 234 EVERY 20' (TYP).
4. EXPANSION JOINT (1/2") EVERY 100' MAX. PER CLARK COUNTY STANDARD DRAWING NO. 234.
5. TYPE I OR TYPE II AGGREGATE BASE COMPACTED TO 90%.
6. 6 X 6 WELDED WIRE FABRIC (2" CLEAR FROM BOTTOM)
7. REVERSE CROWN DEPTH OF 1/2" (TYP).

CLARK COUNTY SPECIFICATION REFERENCE:
 302 AGGREGATE BASE 501 CONCRETE
 502 CONCRETE STRUCTURES 505 REINFORCING STEEL
 707 EXPANSION JOINT MATERIAL

B 3' VALLEY GUTTER
 C12 (ON SITE) 1" = 1'-0"

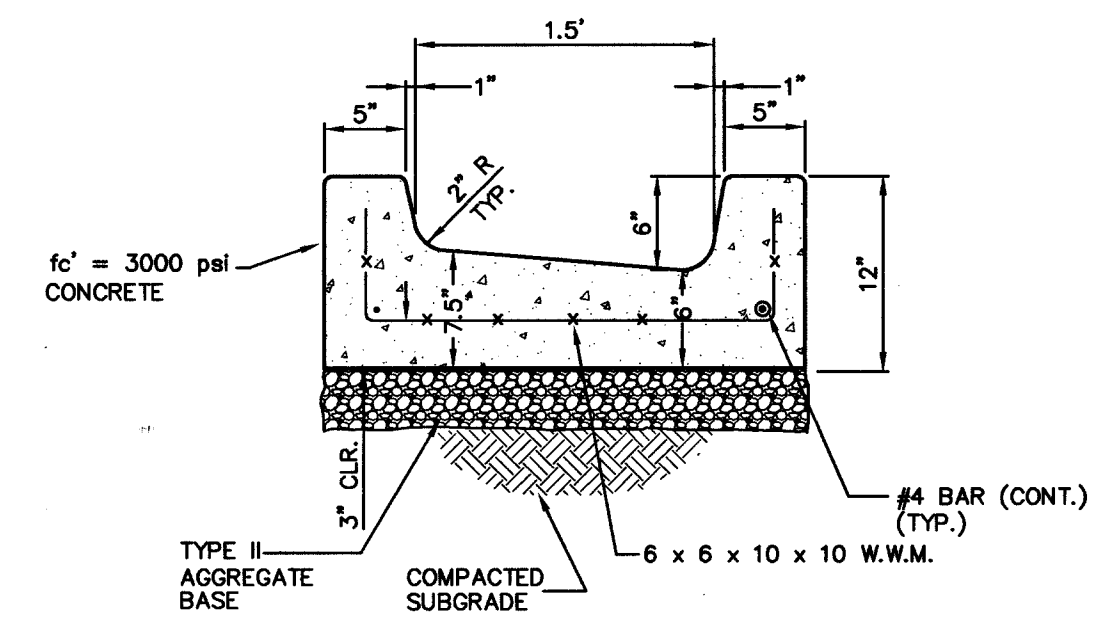


NOTES:

1. ALL CONCRETE SHALL BE CLASS-B.
2. WEAKENED PLANE JOINT PER CLARK COUNTY STANDARD DRAWING NO. 234 EVERY 20' (TYP).
3. EXPANSION JOINT (1/2") EVERY 100' MAX. PER CLARK COUNTY STANDARD DRAWING NO. 234.
4. TYPE I OR TYPE II AGGREGATE BASE COMPACTED
5. 6 X 6 WELDED WIRE FABRIC (3" CLEAR FROM BOTTOM) TO 90%.

CLARK COUNTY SPECIFICATION REFERENCE:
 302 AGGREGATE BASE 501 CONCRETE
 502 CONCRETE STRUCTURES 505 REINFORCING STEEL
 707 EXPANSION JOINT MATERIAL

C 2.5' CONCRETE 'U' CHANNEL
 C12 (ON SITE) 1" = 1'-0"

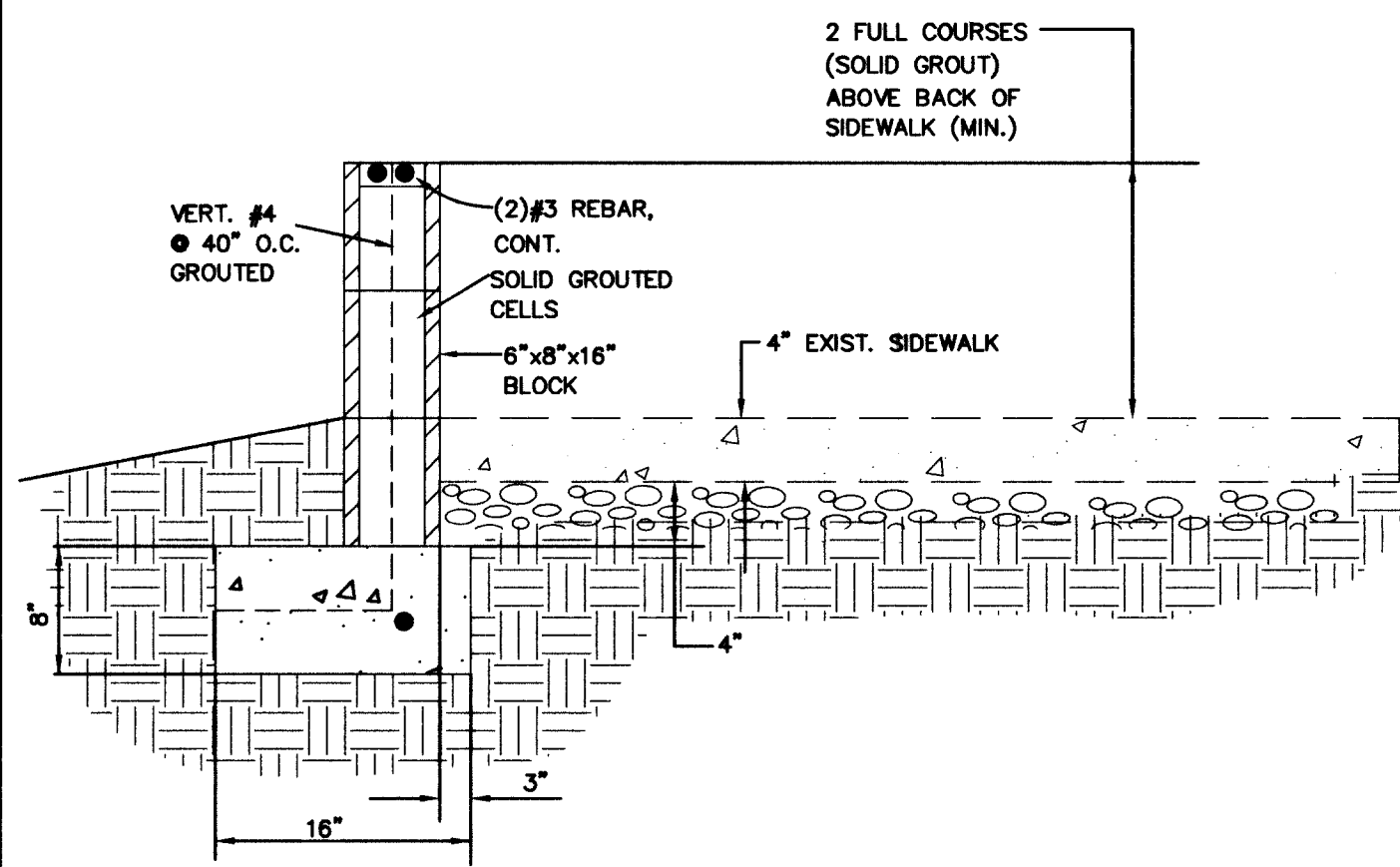


NOTES:

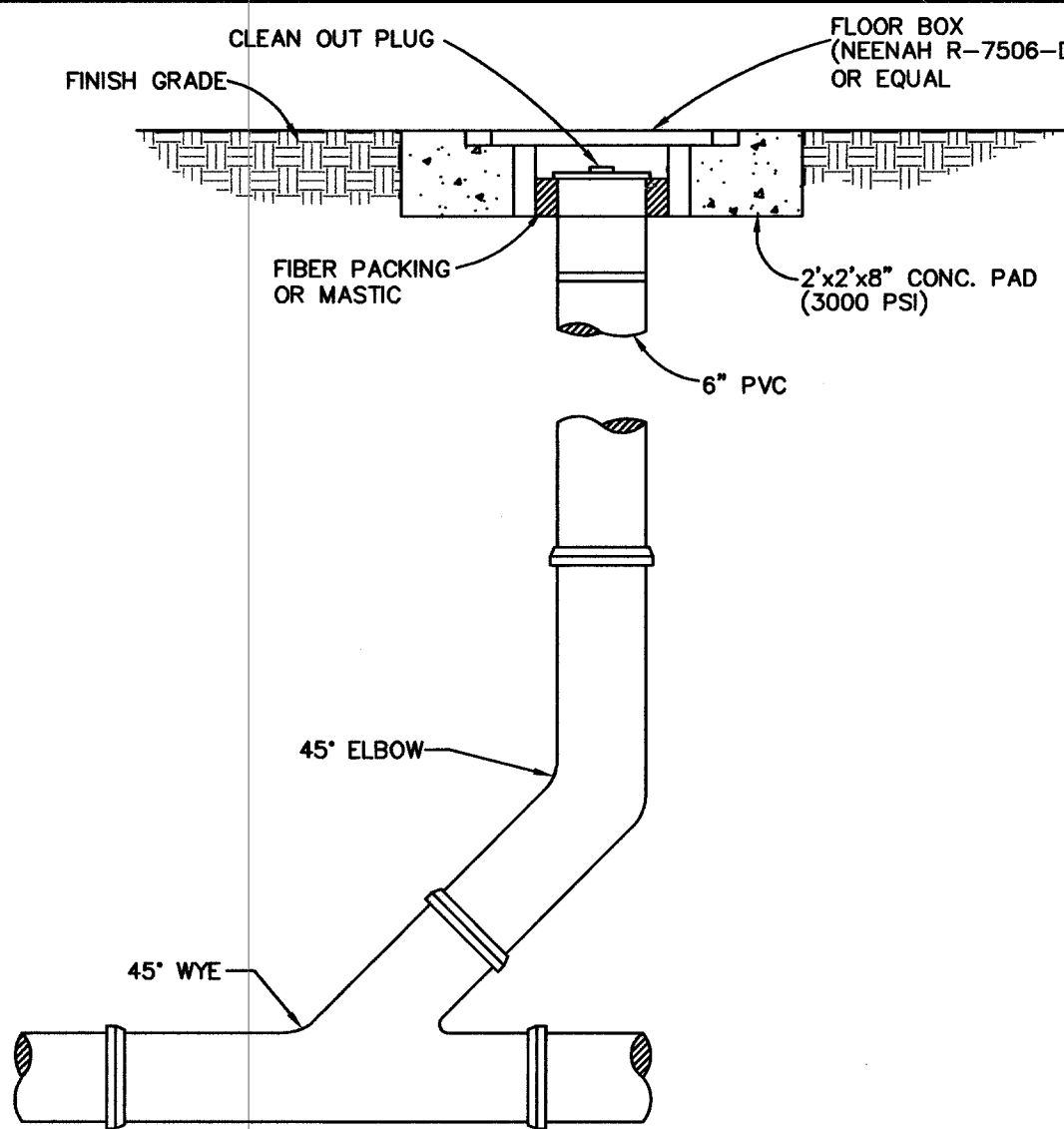
1. ALL CONCRETE SHALL BE CLASS-B.
2. WEAKENED PLANE JOINT PER CLARK COUNTY STANDARD DRAWING NO. 234 EVERY 20' (TYP).
3. EXPANSION JOINT (1/2") EVERY 100' MAX. PER CLARK COUNTY STANDARD DRAWING NO. 234.
4. TYPE I OR TYPE II AGGREGATE BASE COMPACTED
5. 6 X 6 WELDED WIRE FABRIC (3" CLEAR FROM BOTTOM) TO 90%.

CLARK COUNTY SPECIFICATION REFERENCE:
 302 AGGREGATE BASE 501 CONCRETE
 502 CONCRETE STRUCTURES 505 REINFORCING STEEL
 707 EXPANSION JOINT MATERIAL

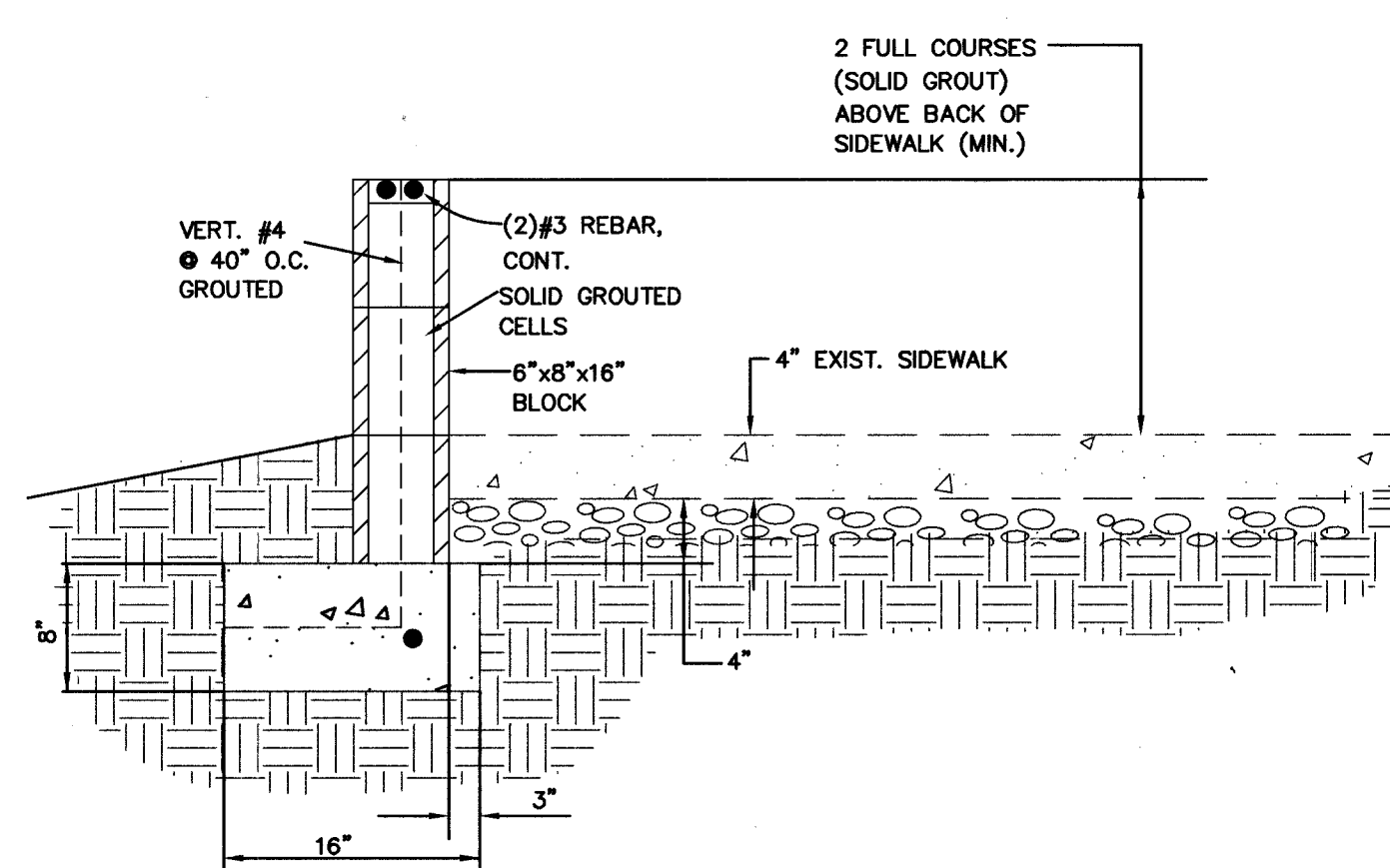
D MODIFIED CONCRETE CHANNEL
 C12 (ON SITE) 1" = 1'-0"



E PROPOSED STEM WALL
 C12 (ON SITE) N.T.S.



F CLEANOUT DETAIL
 C12 NONE



REVISION	DATE	BY	3/20/04	ATLANTA CHANGES
<p>NUCLEUS NEW MARKETS INC. 903 WEST OWNERS LAS VEGAS, NEVADA 89108</p> <p>WLB GROUP Engineering & Landscape Architecture 2551 N. Green Valley Pkwy, Suite #425 HENDERSON, NV 89014(702) 458-2551</p>				
<p>EDMOND TOWN CENTER (PREVIOUSLY WESTLAND PLAZA)</p>				
<p>SHEET TITLE: DETAIL SHEET</p>				
Drawn by:	OF/DG	Designed by:	JRM	Checked by:
Project No.:	401042-A-001	Scale:	NONE	
<p>SEAL PROFESSIONAL ENGINEER A. NELSON STONE II CIVIL No. 7545 Exp. 6/30/04</p>				
<p>SHEET C12 C12 OF C12 DRAWING NO. 107-V 2191-2</p>				

42616 72629