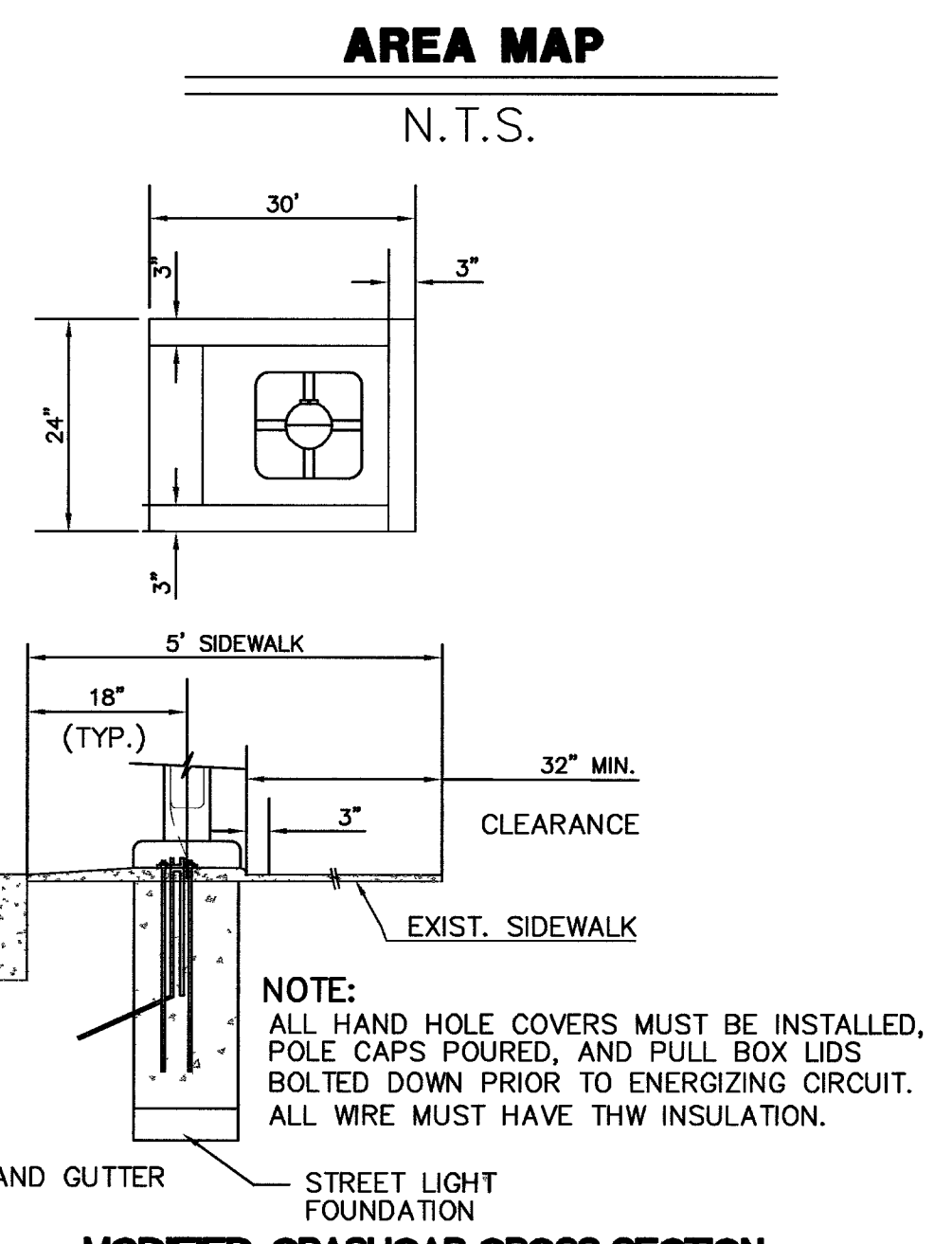


- CONSTRUCTION NOTES-WATER**
- CONNECT TO EXISTING 2" METER PER UDACS PLATE #1-D
  - 6" x 4" x 4" TEE W/ THRUST BLOCK
  - 10" DCDA - UDACS PLATE NO. 20-B
  - SEE PLUMBING PLAN FOR CONNECTION TO BUILDING
  - 6" x 4" TEE W/ THRUST BLOCK
  - INSTALL 2" METER PER UDACS #1-D
  - 6" x 90° BEND W/ THRUST BLOCK
  - 2" RPPA - UDACS PLATE NO. 11-A
  - FIRE HYDRANT - UDACS PLATE NO. 7
  - 10" GATE VALVE - UDACS PLATE NO. 8
  - 6" GATE VALVE - UDACS PLATE NO. 8
  - 4" GATE VALVE - UDACS PLATE NO. 8
  - 10" x 90° BEND W/ THRUST BLOCK
  - 10" x 8" REDUCER W/ THRUST BLOCK
  - 10" x 10" TEE W/THRUST BLOCK
  - 10" x 6" REDUCER W/ THRUST BLOCK
  - 6" x 6" TEE W/THRUST BLOCK
  - 6" x 45" BEND W/THRUST BLOCK
  - 4" x 4" TEE W/ THRUST BLOCK
  - 4" x 90° BEND W/ THRUST BLOCK
  - 10" CAP W/ THRUST BLOCK
  - 4" CAP W/ THRUST BLOCK
  - 8" TAPPING SLEEVE W/ VALVE
  - 8" x 8" x 8" TEE W/ THRUST BLOCK
  - 8" GATE VALVE-UDACS PLATE NO. 8
  - 8" x 6" REDUCER W/ THRUST BLOCK
  - 14" x 10" TAPPING TEE W/10" VALVE
  - 15'x20' LVWD EASEMENT
  - CONNECT TO EXISTING 8" FIRE LINE
  - INSTALL 8" CAP W/ THRUST BLOCK
  - 8" x 45" BEND W/ THRUST BLOCK
  - 8" x 90 BEND W/ THRUST BLOCK
  - 4" x 1" TEE W/ THRUST BLOCK
  - 6" x 4" REDUCER W/ THRUST BLOCK
  - 10" x 6" x 10" TEE W/ THRUST BLOCK
  - 4" x 2" REDUCER W/ THRUST BLOCK
  - 4" x 1 1/4" REDUCER W/ THRUST BLOCK
  - 6" x 1" REDUCER W/ THRUST BLOCK
  - 6" x 2" REDUCER W/ THRUST BLOCK
  - 4" x 1" REDUCER W/ THRUST BLOCK



- CONSTRUCTION NOTES-SANITARY SEWER**
- GREASE TRAP PER PLUMBING PLANS
  - STD. 48" DIA. SANITARY SEWER MANHOLE (PRIVATE)
  - SEE PLUMBING FOR EXACT LOCATION OF LATERAL
  - MAINTAIN 5' MIN. HORIZ. SEPARATION FROM WATER
  - SANITARY SEWER CLEANOUT-SEE DETAIL SHEET C12
  - CONNECT TO EXISTING SANITARY SEWER MANHOLE
  - CAP EXISTING SEWER LINE
  - EXIST. SAN. SEW. TO BE ABANDONED.
  - CRUSH IN PLACE OR SLURRY FILL
  - CONTRACTOR TO MAKE ALL SEWER LATERAL CONNECTIONS WITH BUILDING DRAINAGE PIPE USING 6" x 4" PVC REDUCERS.

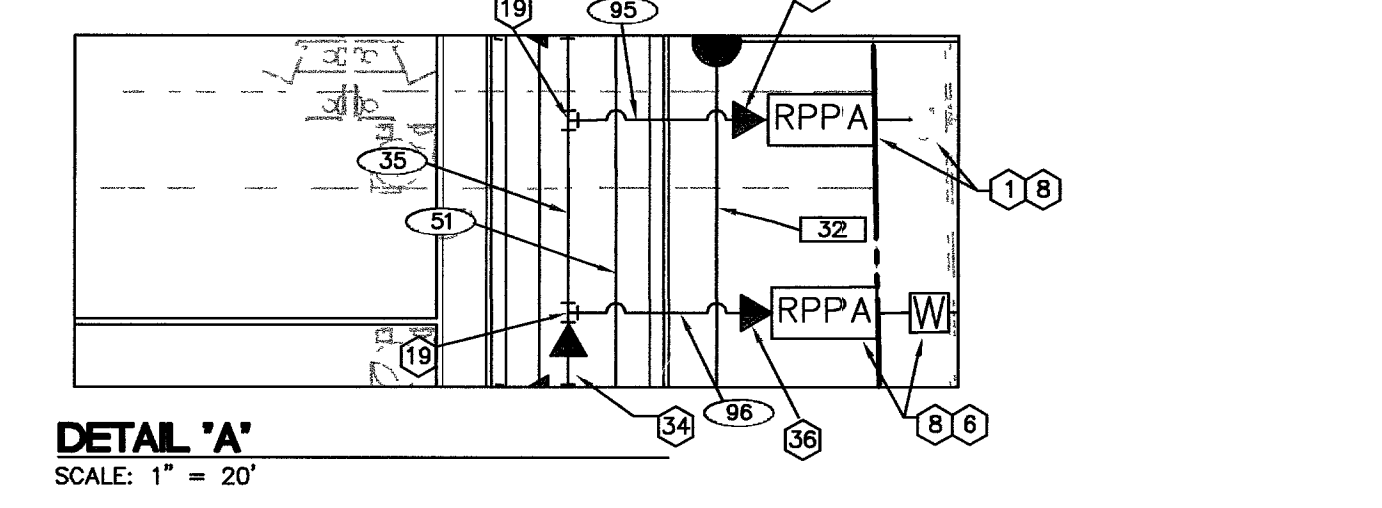
- CONSTRUCTION NOTES-STREETLIGHTING**
- RELOCATE EXIST. ST. LT.
- CONSTRUCTION NOTES-SIGNAGE**
- INSTALL "FIRE LANE, NO PARKING" SIGN
- BENCHMARK**
- ID# 2LV0128NE6  
RIVET AND PLATE IN TOP OF CURB, NW RETURN  
"H" STREET AND MONROE AVENUE.  
NAVD 88 ELEVATION=619.8484 METERS; 2033.62 FEET.

**BASIS OF BEARINGS**

BEING THE NORTH LINE OF THE NORTHEAST QUARTER OF THE NORTHEAST QUARTER OF SECTION 28, TOWNSHIP 20 SOUTH, RANGE 61 EAST, M.D.M., CITY OF LAS VEGAS, CLARK COUNTY, NEVADA, AS SHOWN ON PARCEL MAP IN FILE #87, PAGE 93, OFFICIAL RECORDS, CLARK COUNTY, NEVADA, WHICH BEARS: NORTH 89°55'28" EAST.

**NOTE:** THESE PLANS SHALL NOT, IN PART OR IN WHOLE, BE USED FOR CONSTRUCTION UNTIL APPROVED AND SIGNED BY THE GOVERNING AGENCIES.

**NOTE:** FOR FDC LOCATION INSIDE BUILDING 1, SEE ARCHITECTURAL PLANS



**ABANDONMENT OF EXISTING SERVICE(S)-2" AND SMALLER**  
1 3/4" METER # 2342041 ACCT. # 56811

CONTRACTOR SHALL NOTIFY THE INSPECTION DIVISION AT THE LVWD (702) 258-3227 48 HOURS PRIOR TO THE REQUESTED REMOVAL TIME TO ALLOW THE DISTRICT TO TAKE THE FINAL METER READING OF THE METER. AFTER THE FINAL READING, AFTER THE FINAL READING, THE EXISTING METER(S) SHALL BE REMOVED AND DELIVERED TO THE DISTRICT. THE CONTRACTOR MAY THEN BEGIN REMOVAL PROCEDURES FOR THE AFFECTED SERVICE AS FOLLOWS:

EXISTING SERVICE LATERALS THAT ARE TO BE ABANDONED FROM THE EXISTING WATER MAIN, SHALL HAVE THE CORPORATION STOP TURNED OFF AT THE MAIN, A MINIMUM OF 12" OF THE LATERAL CUT OUT NEAR THE CORPORATION STOPS AND A BRASS CAP INSTALLED ON THE CORPORATION STOP. IF THE CORPORATION STOP IS DAMAGED BEYOND REPAIR OR PULLED FROM THE EXISTING WATER MAIN, THE MAIN SHALL BE REPAIRED AT THE CONTRACTOR'S EXPENSE, IN A MANNER APPROVED BY LVWD. IF THE CORPORATION STOP IS NOT WATER TIGHT, THE CONTRACTOR SHALL NOTIFY LVWD COMMUNICATION SUPPORT CENTER (702) 258-7171 FOR FURTHER DIRECTION.

THE CONTRACTOR SHALL REMOVE THE EXISTING SERVICE METER AND BOX APPURTENANCES, FILL AND GRADE ANY AND ALL RESULTING VOIDS AND REPLACE OR RESTORE TO ORIGINAL CONDITIONS OR BETTER, ALL LANDSCAPING, IRRIGATION SYSTEMS, CONCRETE, SIDEWALKS, ASPHALT, OR ANY OTHER ITEMS DAMAGED OR REMOVED DURING THE REMOVAL OF THE EXISTING SERVICE METER BOX.

**ABANDONED VALVE CUT AND CAP**

ALL VALVES TO BE ABANDONED IN THE CLOSED POSITION, UNLESS SHOWN OTHERWISE, BY REMOVING A MINIMUM OF THE TOP 12 INCHES OF THE VALVE BOX AND THEN FILLING THE REMAINING PORTION OF THE VALVE BOX WITH CONCRETE HAVING A COMPRESSIVE STRENGTH OF AT LEAST 2,000 PSI. THE CONTRACTOR SHALL CUT THE EXISTING PIPE WITHIN 3' OF THE ABANDONED VALVE OR WHERE SHOWN ON THE PLANS AND INSTALL CAP. WHERE A JOINT OR COUPLING IN THE EXISTING PIPE IS UNCOVERED AT THE CUT AND CAP LOCATION, THE INSTALLATION OF A PLUG MAY BE PERMITTED WITH DISTRICT APPROVAL. THE CONTRACTOR SHALL INSTALL A CONCRETE THRUST BLOCK IN ACCORDANCE WITH THE PROVISIONS OF THE UDACS PLATE NO. 5 AT ALL CAP OR PLUG LOCATIONS.

**REDUCED PRESSURE PRINCIPLE ASSEMBLY**

(2) 2" RPPA  
APPROVED REDUCED PRESSURE PRINCIPLE ASSEMBLY(S) SHALL BE INSTALLED PER THE UDACS PLATES NO. 11A AND 11B. NO WATER SHALL BE TAKEN FROM A SERVICE REQUIRING BACK FLOW PREVENTION UNTIL THE REDUCED PRESSURE PRINCIPLE ASSEMBLY HAS BEEN SUCCESSFULLY TESTED BY THE LVWD.

ANY BLOCK WALL OR OTHER FENCE MATERIAL SHALL BE DESIGNED AND CONSTRUCTED AROUND THE OUTSIDE OF THE EASEMENT(S) TO ALLOW THE DISTRICT DIRECT ACCESS TO THE VAULT(S) FROM THE ADJACENT RIGHT-OF-WAY.

**INSTALLATION OF DOUBLE CHECK DETECTOR ASSEMBLY**

(1) 4" DCDA  
THE DOUBLE CHECK DETECTOR ASSEMBLIES SHALL BE INSTALLED IN ACCORDANCE WITH UDACS PLATE 20B. ANY BLOCK WALL OR OTHER FENCE MATERIAL SHALL BE DESIGNED AND CONSTRUCTED AROUND THE OUTSIDE OF THE EASEMENT(S) SO AS TO ALLOW THE DISTRICT DIRECT ACCESS FROM THE ADJACENT RIGHT-OF-WAY. EASEMENTS SHALL BE CLEARLY MARKED OR STAKED PRIOR TO THE START OF CONSTRUCTION.

**LEGEND**

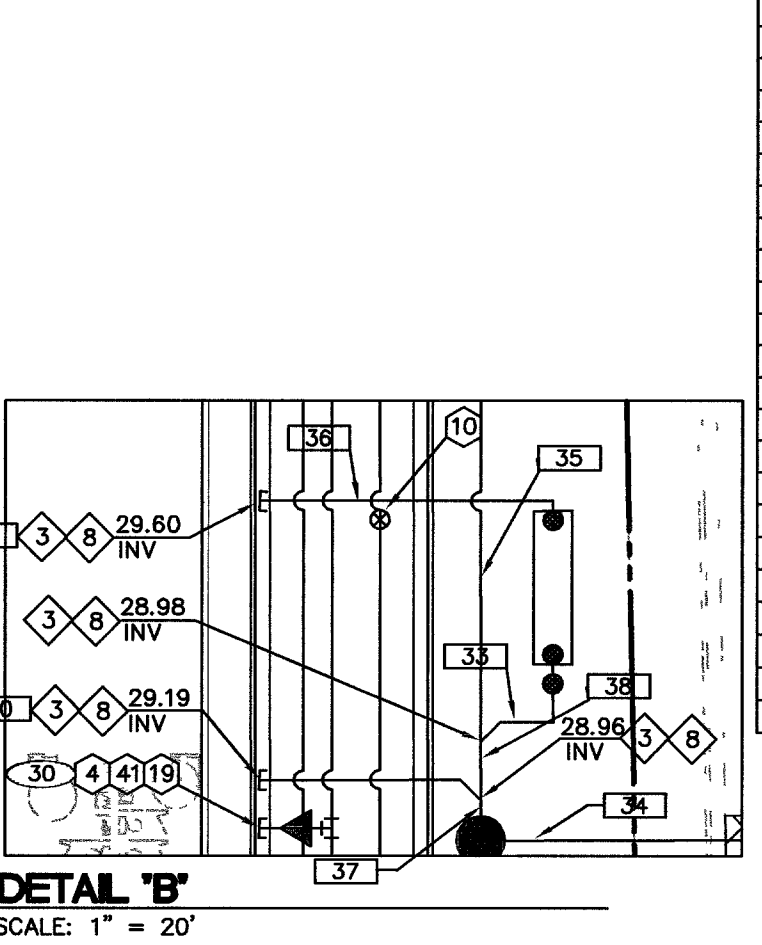
	PROPOSED	EXISTING
PROPERTY BOUNDARY	---	---
RIGHT-OF-WAY	---	---
LOT LINE	---	---
CENTERLINE	---	---
CURB & GUTTER	---	---
PAD ELEVATION	65.2	65.2
BLOCK WALL	---	---
WATER LINE	W	---
WATER VALVE	⊕	---
WATER METER	⊕	---
FIRE HYDRANT	⊕	---
RPPA	⊕	---
DCDA	⊕	---
SANITARY SEWERLINE	SS	---
SANITARY SEWER MANHOLE	⊕	---
SANITARY SEWER CLEANOUT	⊕	---
SANITARY SEWER FLOW ARROW	→	---
GAS LINE	G	---
GAS VALVE	⊕	---
GAS METER	⊕	---
GAS MANHOLE	⊕	---
TRAFFIC CONDUIT	⊕	---
PULL BOX	PBX	---
STREET LIGHT	⊕	---
TRENCH, BACKFILL AND REPLACE PAVING PER C.C. STD. DWG. NO. 303	---	N/A
FIRE LANE-PAINT CURB RED, FIRE LANE SIGNS & NO PARKING SIGNS	---	N/A

**SEWER TABLE**

PIPE DIA (IN.)	MATERIAL	LF	SLOPE (%)
28	6 PVC-SDR35	23.99	2.04%
30	8 PVC-SDR35	42.71	0.40%
31	6 PVC-SDR35	24.57	0.40%
32	6 PVC-SDR35	38.55	0.40%
33	6 PVC-SDR35	14.35	1.35%
34	8 PVC-SDR35	72.68	0.40%
35	6 PVC-SDR35	89.79	0.40%
36	6 PVC-SDR35	31.60	1.35%
37	8 PVC-SDR35	4.29	0.40%
38	8 PVC-SDR35	5.93	0.40%
39	6 PVC-SDR35	14.03	1.91%

**WATER TABLE**

PIPE DIA (IN.)	MATERIAL	LF
27	4(D) PVC-0900	7.79
28	6(D) PVC-C900	10.00
29	4(D) PVC-0900	7.44
30	4(D) PVC-C900	8.84
31	4(D) PVC-C900	109.78
33	6(D) PVC-C900	8.43
35	4(D) PVC-C900	20.00
36	4(D) PVC-C900	31.08
37	4(D) PVC-C900	285.07
38	4(D) PVC-C900	32.65
39	4(D) PVC-C900	82.76
40	4(D) PVC-C900	120.55
41	4(D) PVC-C900	56.89
42	4(D) PVC-C900	55.87
43	4(D) PVC-C900	193.33
44	4(D) PVC-C900	95.40
45	4(D) PVC-C900	34.00
46	4(D) PVC-C900	18.00
47	4(D) PVC-C900	98.38
48	4(D) PVC-C900	17.52
49	4(D) PVC-C900	14.42
50	4(D) PVC-C900	30.17
51	4(D) PVC-C900	76.47
52	4(D) PVC-C900	223.70
53	4(D) PVC-C900	246.54
54	4(D) PVC-C900	109.59
55	4(D) PVC-C900	236.73
56	4(D) PVC-C900	17.22
57	4(D) PVC-C900	32.65
58	4(D) PVC-C900	24.20
59	4(D) PVC-C900	24.57
60	4(D) PVC-C900	9.40
61	4(D) PVC-C900	20.89
62	4(D) PVC-C900	21.25



**UTILITY NOTE**

UTILITY LOCATIONS SHOWN HEREON ARE APPROXIMATE ONLY. IT SHALL BE THE CONTRACTOR'S RESPONSIBILITY TO DETERMINE THE EXACT VERTICAL AND HORIZONTAL LOCATION OF ALL EXISTING UNDERGROUND UTILITIES PRIOR TO COMMENCING CONSTRUCTION. NO REPRESENTATION IS MADE THAT ALL EXISTING UTILITIES ARE SHOWN HEREON. THE ENGINEER ASSUMES NO RESPONSIBILITY FOR UTILITIES NOT SHOWN OR UTILITIES NOT SHOWN IN THEIR PROPER LOCATION.

CALL BEFORE YOU DIG: 1-800-227-2600

**MODIFIED CRASHCAP CROSS SECTION AND STREETLIGHT INSTALLATION PER CLV REQUIREMENTS**

**FIRE DEPARTMENT**

FIRE FLOW REQUIREMENT IS 3500\* GALLONS PER MINUTE AT 20 POUNDS PER SQUARE INCH RESIDUAL.

BASED ON: 40,400 S.F.  
SQUARE FOOTAGE

LARGEST AREA BETWEEN 4-HOUR AREA SEPARATION WALLS: N/A  
HEIGHT: N/A  
TYPE OF CONSTRUCTION: V-N  
EXPOSURES: N/A  
SPRINKLER SYSTEM: YES  
OCCUPANCY: N/A  
ROOF CONSTRUCTION: N/A

REVIEWED BY: [Signature]  
DATE: 8/19/04

APPROVAL OF THESE PLANS SHALL NOT BE CONSTRUED TO BE A PERMIT FOR NOR AN APPROVAL OF ANY VIOLATION OF ANY OF THE PROVISIONS OF THE STATE OR COUNTY LAWS.

\* BASED ON 50% REDUCTION

**FIRE DEPARTMENT APPROVAL**

APPROVAL BY THE FIRE DEPARTMENT HAVING JURISDICTION IS REQUIRED PRIOR TO OBTAINING FINAL APPROVAL FROM THE LVWD.

**WASTEWATER GENERATION RATES**

PER CLV WASTEWATER GENERATION RATES  
RETAIL SPACE: 9.56 ACRES x 800 GALLONS-ACRE = 7,648 GPD  
COMMERCIAL SPACE: 1.58 ACRES x 1,750 GALLONS-ACRE = 2,413 GPD  
TOTAL: 10,413 GPD OR 0.010 MGD  
PEAK FACTOR: 2.90 PEAK FLOW: 2.9 x 10,413 GPD = 30,198 GPD OR 0.030 MGD

APPROVED FOR CONSTRUCTION  
FIRST APPROVAL 7/11/03  
[Signature] 8/19/04  
LAS VEGAS VALLEY WATER DISTRICT DATE

SAFETY ALERT  
Call before you Overhead 593-6111  
Call before you Dig. 1-800-227-2600  
UNDERGROUND SERVICE ALERT

**NUCLEUS INVESTMENTS**  
901 WEST OWENS LAS VEGAS, NEVADA 89108  
702-820-2710

**MASTER UTILITY PLAN**

**EDMOND TOWN CENTER (PREVIOUSLY WESTLAND PLAZA)**

PROJECT: REVISION BLDG DESIGN/ENTIRE SHEET REVISION 12/17/04 JA REVISED DOMESTIC WATER LINE (1" DIA) FROM REUSE ENTRANCE DUE TO CONTRACTOR'S REQUEST

REV DATE BY: 12/17/04 JA

Engineering: Landscape Architecture, Planning, Urban Design, Surveying  
2851 N. Green Valley Pkwy, Suite A425 Henderson, NV 89014(702) 486-2851

**WLB Group**

SHEET C8 OF C12  
DRAWING NO. 107-V-2191-2  
REPLLOT