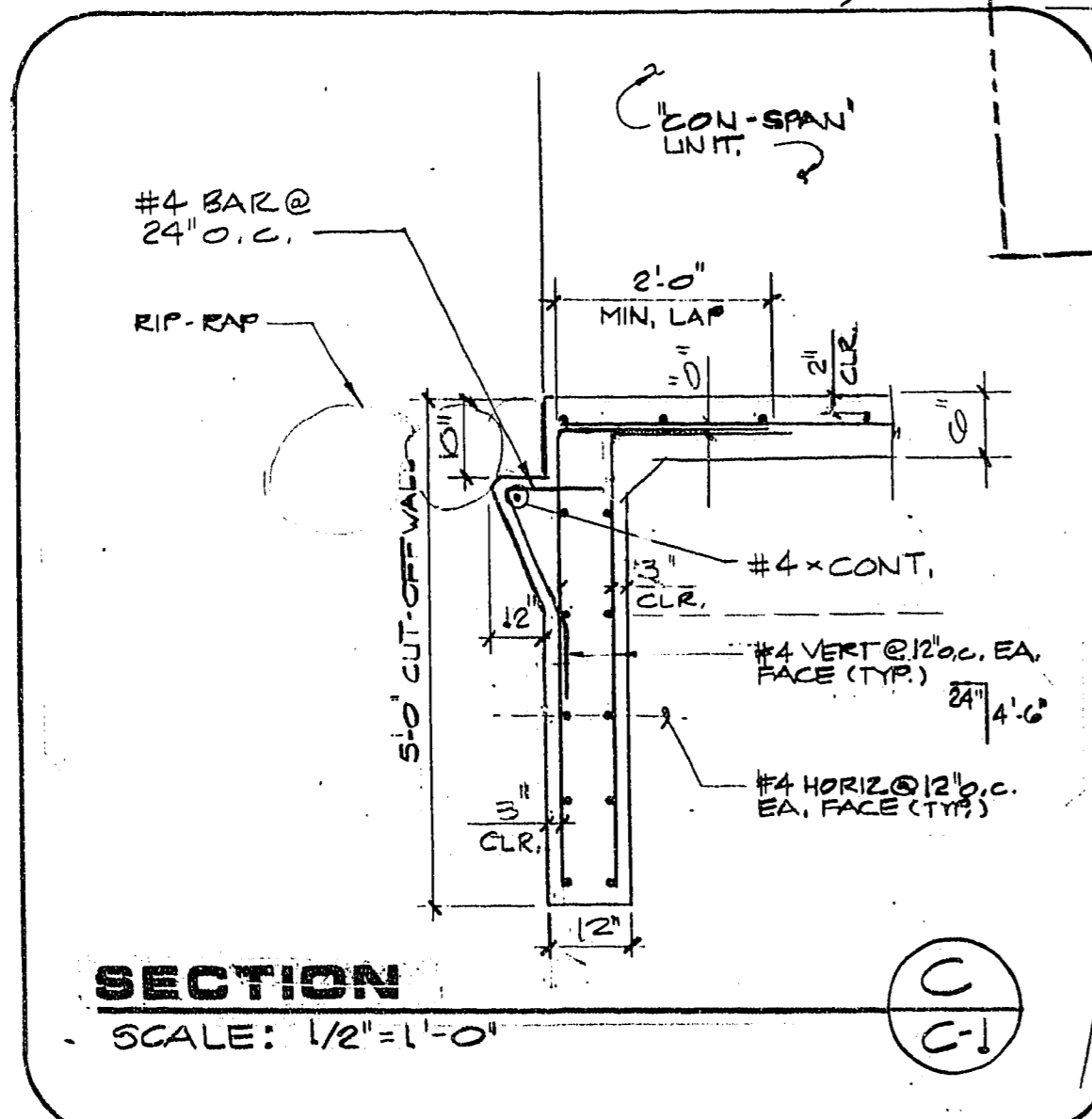
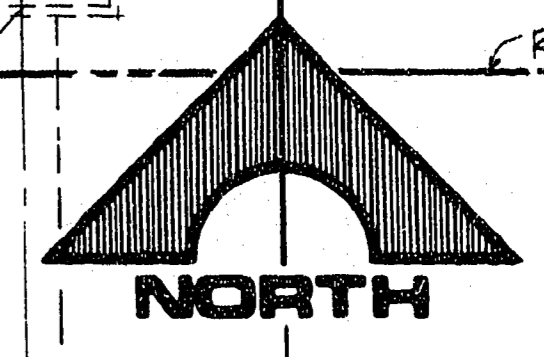


NOTE.
 CON/SPAN CULVERT ALIGNMENT IS DRAWN PARALLEL WITH CHEYENNE BLVD C/L. TRUE ALIGNMENT IS AT A SKEW OF 2°-19'-40" FROM PIVOT POINT NOTED ON PLAN



TRUE ALIGNMENT OF CON/SPAN CULVERT

Call before you Dig.
 1-800-227-2800
 LANDSCAPE

NOTE:
 FOR GENERAL NOTES SEE SHEET C-4

PLAN
 SCALE: 1/8" = 1'-0"

SECTION
 SCALE: HORIZ: 1/8" = 1'-0"
 VERT: 1/4" = 1'-0"

SECTION
 SCALE: HORIZ: 1/8" = 1'-0"
 VERT: 1/4" = 1'-0"

REV	DATE	DESCRIPTION
1	11-15-01	REVISED TO ADD 3' WALL SECTIONS AND APPROXIMATE TO CON/SPAN CULVERT
2	11-15-01	REVISED TO ADD APPROXIMATE TO CON/SPAN CULVERT
3	11-15-01	REVISED TO ADD APPROXIMATE TO CON/SPAN CULVERT

RECOMMENDED
 11/15/01
 G.C. WALLACE, INC.
 Engineering/Architecture
 1555 SOUTH RAINBOW BLVD., LAS VEGAS, NEVADA 89102

DESERT SHORES DEVELOPMENT CO.
 DESERT SHORES - PHASE 1A
 RAMPART BLVD DRAINAGE CULVERT
 PLAN & SECTIONS

JOB NO. 660.0.12

854 DIETRICH-POST 66228

CLV CHIEF LAND DEVELOPMENT