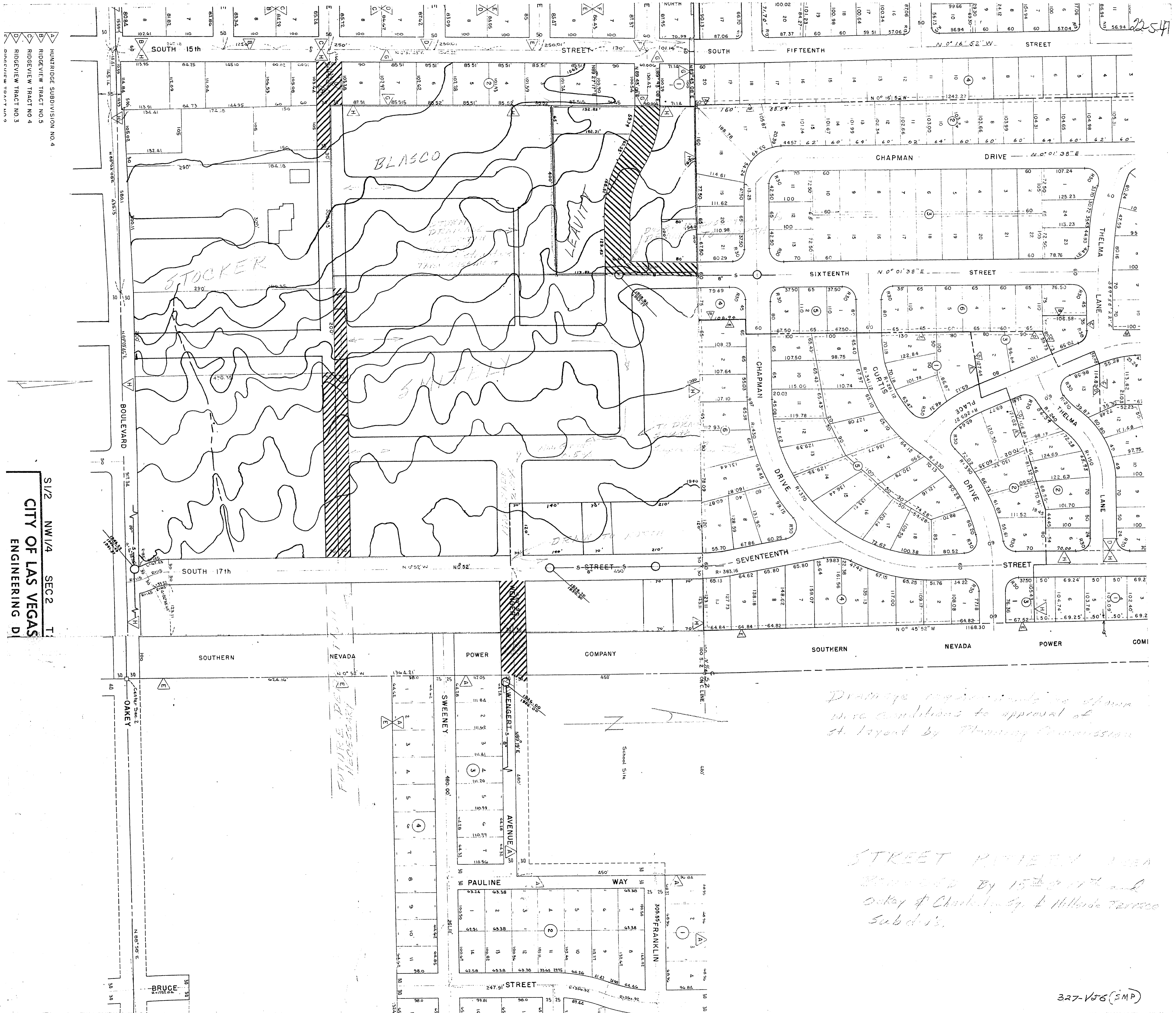


22-547



A HUNTRIDGE SUBDIVISION NO. 4
 B RIDGEVIEW TRACT NO. 5
 C RIDGEVIEW TRACT NO. 4
 D RIDGEVIEW TRACT NO. 3
 E DUCTIVE TRACT NO. 2

S1/2 NW1/4 SEC 2 T1
 CITY OF LAS VEGAS
 ENGINEERING D

Drainage requirements as shown were submitted to approval of St. Dept. by Planning Commission

STREET PAVEMENT WORK COMPLETED BY 15th OF 11th and Oakley & Chapman by Hillside Terrace Subdiv's.

327-186(SMP)