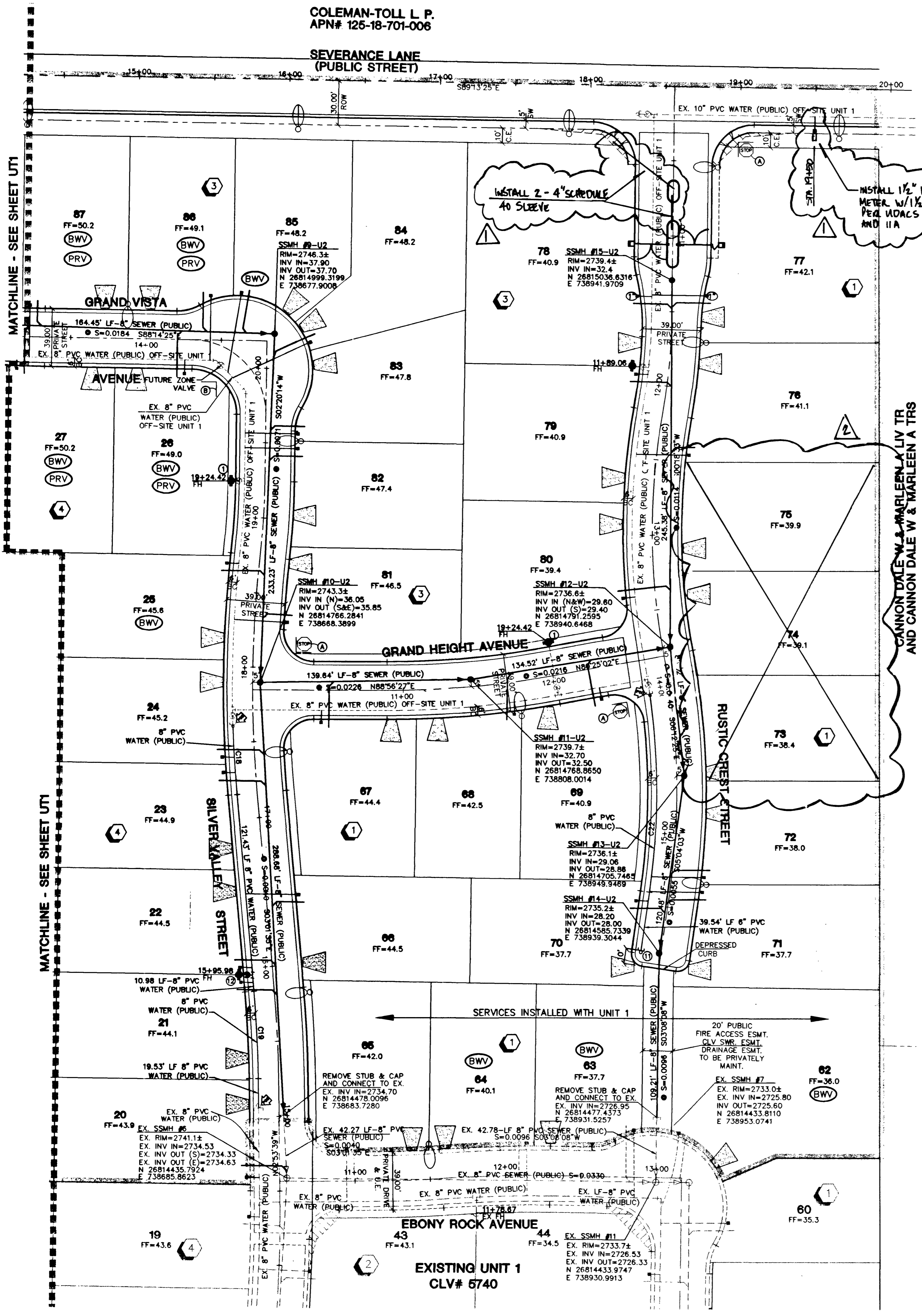


COLEMAN-TOLL L.P.  
APN# 125-18-701-006

SEVERANCE LANE  
(PUBLIC STREET)



CURVE	LENGTH	RADIUS	TANGENT	DELTA
C7	85.08'	236.50'	43.00'	20°36'41"
C11	70.90'	1186.50'	35.46'	3°25'25"
C18	45.67'	813.50'	22.84'	3°13'00"
C19	57.99'	786.50'	29.01'	4°13'29"
C22	132.63'	1472.50'	66.75'	16°04'39"
C27	22.33'	1186.50'	11.17'	1°04'42"

**LAS VEGAS VALLEY  
WATER DISTRICT STANDARD NOTES**

- LVVWD PROJECT # 26757
- NO WORK SHALL BEGIN UNTIL THE WATER PLANS HAVE BEEN RELEASED FOR CONSTRUCTION BY THE LVVWD. FOLLOWING WATER PLAN APPROVAL, 48 HOUR NOTICE SHALL BE GIVEN TO THE LVVWD COMMUNICATION SUPPORT CENTER (258-7171) PRIOR TO THE START OF CONSTRUCTION. NOTICE MUST BE GIVEN BY 2:00 P.M. THE BUSINESS DAY PRIOR TO A LVVWD INSPECTION WHEN REQUESTING INSPECTIONS, PLEASE REFER TO THE PROJECT # IDENTIFIED ABOVE.
  - ALL WORK SHALL CONFORM TO LVVWD STANDARD PLATES, DRAWINGS, AND SPECIFICATIONS, AND THE UNIFORM DESIGN AND CONSTRUCTION STANDARDS FOR WATER DISTRIBUTION SYSTEMS (UDACS), LATEST EDITION.
  - ALL WORK, EXCEPT AS MODIFIED BY THESE PLANS OR BY NOTE 2, SHALL BE DONE IN ACCORDANCE WITH THE MOST CURRENT DRAFT OR EDITION OF THE UNIFORM STANDARD SPECIFICATIONS FOR PUBLIC WORKS CONSTRUCTION OFF-SITE IMPROVEMENTS, CLARK COUNTY AREA.
  - A SINGLE PIPE MATERIAL SHALL BE USED THROUGHOUT THE PROJECT UNLESS OTHERWISE APPROVED BY THE LVVWD.
  - ALL SERVICE LATERALS TWO (2) INCHES IN DIAMETER AND SMALLER SHALL BE COPPER TUBING WITH LVVWD APPROVED SERVICE SADDLES.
  - ALL WATER METER BOXES SHALL BE LOCATED OUTSIDE OF DRIVEWAY AREAS. ALL VALVES SHALL BE LOCATED OUTSIDE OF DRIVEWAYS, ALLEYS AND CURB CUTTERS.
  - THE FOLLOWING REQUIREMENTS MUST BE MET IN THE EVENT A WATER LINE AND A SANITARY OR STORM SEWER LINE CROSS:
    - POTABLE WATER SUPPLY QUALITY MATERIAL.
    - ENCASEMENT, WITH FOUR (4) INCH CONCRETE (MINIMUM) SLEEVING WITH POTABLE WATER SUPPLY QUALITY PIPE.

A MINIMUM EIGHTEEN (18) INCH VERTICAL SEPARATION (OUTSIDE TO OUTSIDE) MUST BE MAINTAINED WHEN THE WATER LINE IS INSTALLED OVER THE SANITARY OR STORM SEWER LINE. IF THE VERTICAL SEPARATION CANNOT BE MAINTAINED OR THE WATER LINE MUST BE PLACED UNDER THE SANITARY OR STORM SEWER LINE, THE SANITARY OR STORM SEWER LINE MUST BE CONSTRUCTED WITH ONE OF THE FOLLOWING OR, AS SHOWN ON THESE PLANS:

- POTABLE WATER SUPPLY QUALITY MATERIAL.
- ENCASEMENT, WITH FOUR (4) INCH CONCRETE (MINIMUM) SLEEVING WITH POTABLE WATER SUPPLY QUALITY PIPE.

EACH PROVISION MUST EXTEND ALONG THE SANITARY OR STORM SEWER, ON EITHER SIDE OF THE MAIN, A MINIMUM 10 FOOT DISTANCE PERPENDICULAR TO THE WATER MAIN EXTERIOR.

WARNING TAPE SHALL BE REQUIRED OVER ALL MAINS, ALL SIX (6) INCH DIAMETER AND LARGER SERVICE LATERALS, AND ANY SERVICE LATERAL NOT INSTALLED PERPENDICULAR TO THE MAIN IN ACCORDANCE WITH STANDARD PLATE NO. 27.

ALL WATER FACILITIES SHALL BE FILLED, DISINFECTED, PRESSURE TESTED, FLUSHED, FILLED AND AN ACCEPTABLE WATER SAMPLE OBTAINED PRIOR TO CONNECTION TO THE LVVWD'S DISTRIBUTION SYSTEM.

THE CONTRACTOR MUST OBTAIN ALL METERS TWO (2) INCHES AND SMALLER FROM LVVWD CENTRAL STORES. TELEPHONE 258-3152 FORTY-EIGHT (48) HOURS PRIOR TO PICKUP.

CONSTRUCTION MAY INTERRUPT SERVICE, WITH LVVWD APPROVAL AND PROPER NOTIFICATION, BETWEEN THE HOURS OF 10 PM AND 6 AM, SUNDAY THROUGH THURSDAY. CIRCUMSTANCES MAY REQUIRE TEMPORARY SERVICE FEES BE INSTALLED, WITHOUT LVVWD REIMBURSEMENT. ANY TEMPORARY SERVICE FEES MUST HAVE PRIOR LVVWD APPROVAL.

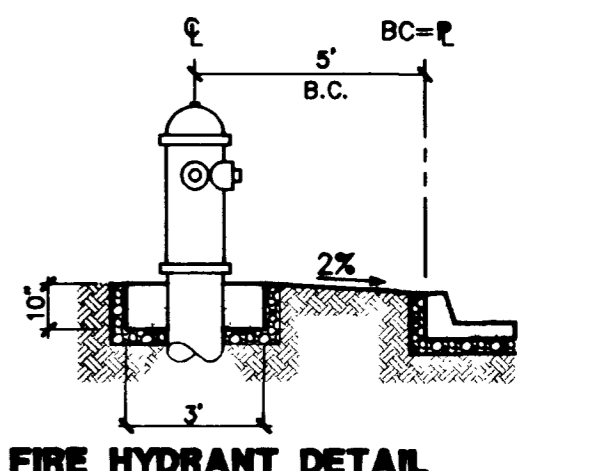
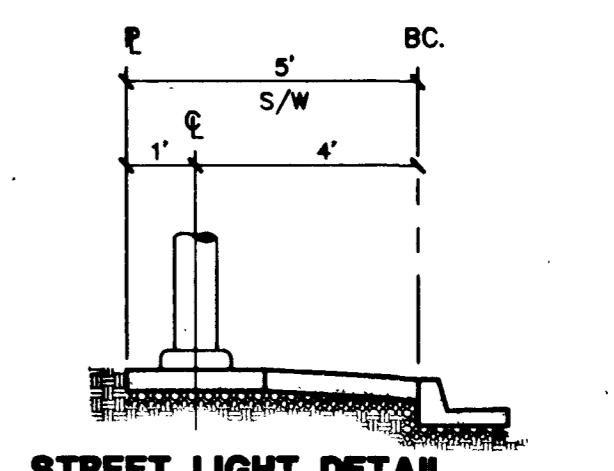
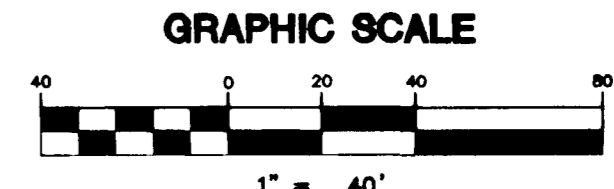
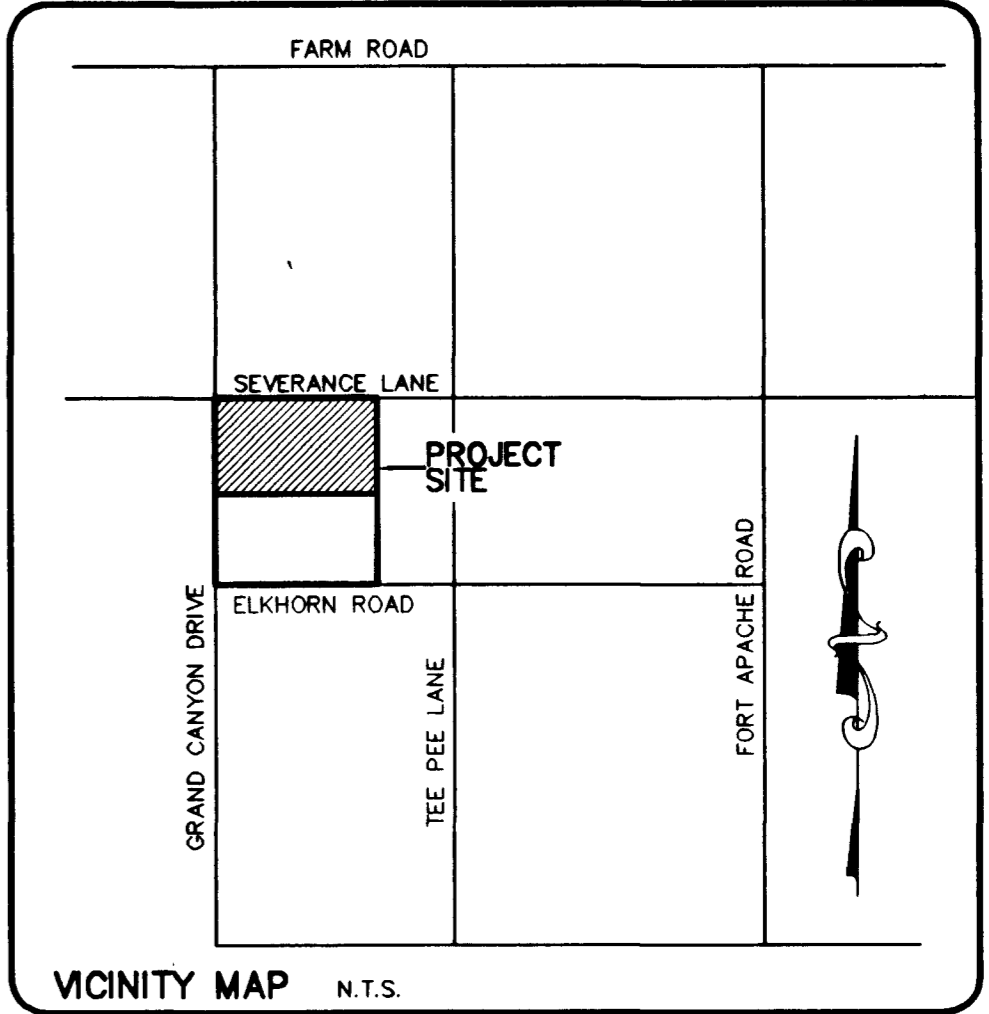
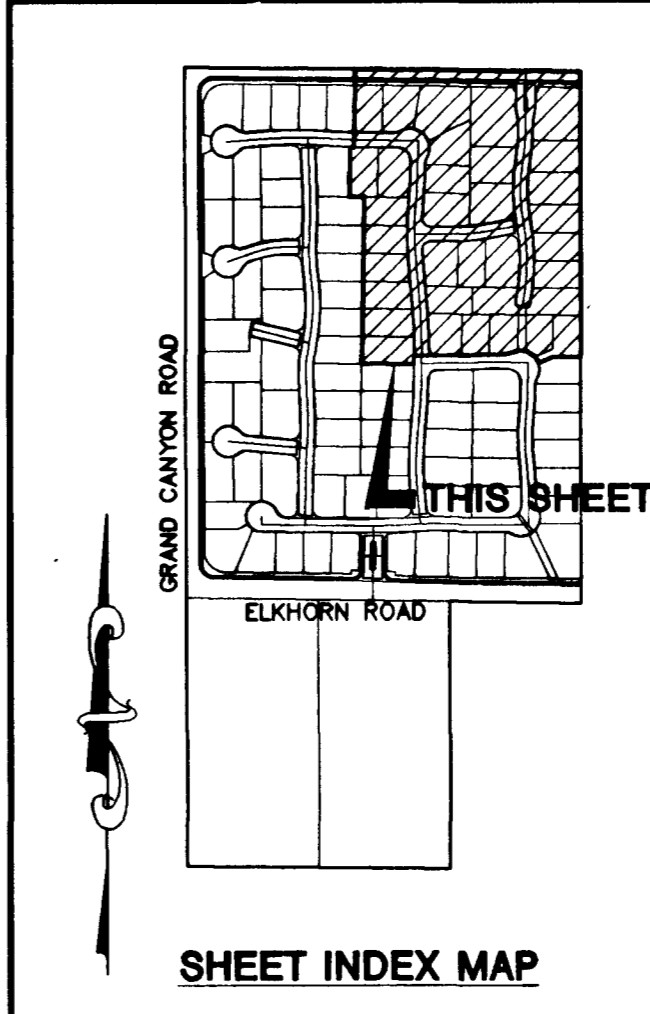
ALL WATER FACILITY CONSTRUCTION MATERIALS USED MUST BE AS LISTED ON THE LVVWD'S PRE APPROVED MATERIALS AND MANUFACTURERS LISTING FOR NEW FACILITIES. LATEST REVISION, OR SPECIFICALLY APPROVED ON THESE PLANS.

**REDUCED PRESSURE PRINCIPLE ASSEMBLY (1) 1-1/2"**

APPROVED REDUCED PRESSURE PRINCIPLE ASSEMBLY(S) SHALL BE INSTALLED PER THE UDACS PLATE NO. 11A. A NO WATER SHALL BE TAKEN FROM A SERVICE REQUIRING BACKFLOW PREVENTION UNTIL THE REDUCED PRESSURE PRINCIPLE ASSEMBLY HAS BEEN SUCCESSFULLY TESTED BY THE LVVWD. ANY BLOCK WALL OR OTHER FENCE MATERIAL SHALL BE DESIGNED AND CONSTRUCTED AROUND THE OUTSIDE OF THE EASEMENT(S) TO ALLOW THE DISTRICT DIRECT ACCESS FROM THE ADJACENT RIGHT-OF-WAY.

EASEMENT SHALL BE CLEARLY MARKED OR STAKED PRIOR TO THE START OF CONSTRUCTION.

ESN 026



**NOTE:**  
INSTALL PIPELINE MARKER BALLS IN TRENCH ABOVE EACH HORIZONTAL ELBOW FITTING, PER MANUFACTURER'S INSTRUCTIONS.  
ESN-062

**CONTRACTOR NOTE:**  
CONTRACTOR SHALL VERIFY HORIZONTAL AND VERTICAL LOCATION OF EXISTING UTILITIES AND NOTIFY THE DESIGN ENGINEER IMMEDIATELY OF ANY DISCREPANCIES PRIOR TO CONSTRUCTION.

**APPROVAL:**

CITY OF LAS VEGAS FIRE MARSHAL: *[Signature]* 10/18/02 DATE

LAS VEGAS VALLEY WATER DISTRICT (SHEET UT1, UT2): *[Signature]* 10/30/02 DATE

Call before you Dig  
1-800-227-2600

Call before you Overhead  
1-702-583-6111

**BENCHMARK**  
PROJECT DATUM: NORTH AMERICAN VERTICAL DATUM OF 1988 (NAV88)  
PROJECT BENCHMARK: CLARK COUNTY BENCHMARK 1090304  
NAV888 ELEVATION: 819.508 METERS (2688.67 FEET)

RIVET AND SQUARE ALUMINUM PLATE IN THE SOUTHEAST CORNER OF A ELECTRICAL CABINET BASE (80720), 200 FT. SOUTH AND 40 FT. WEST CENTENNIAL PKWY. AND GRAND CANYON DR.

**BASIS OF BEARING**  
THE BASIS OF BEARINGS FOR THIS PROJECT IS NORTH 00°06'48" WEST BEING THE WEST LINE OF THE SOUTHWEST QUARTER (SW 1/4) OF THE SOUTHEAST QUARTER (SE 1/4) OF SECTION 18, TOWNSHIP 19 SOUTH, RANGE 60 EAST, M.D.M., CLARK COUNTY, NEVADA, AS SHOWN ON A RECORD OF SURVEY ON FILE IN THE CLARK COUNTY, NEVADA, RECORDER'S OFFICE, IN FILE 114 AT PAGE 57.

**HDPE CONSTRUCTION NOTE**  
CONTRACTOR SHALL PROVIDE 30" MINIMUM COVER OVER PIPE PRIOR TO VEHICLE LOADING DURING CONSTRUCTION. TRENCH WIDTH MUST BE WIDE ENOUGH TO ACCOMMODATE COMPACTION EQUIPMENT. SEE MANUFACTURER'S GUIDELINES (PRODUCT NOTE 3.115) AND ASTM D2321. CONTRACTOR SHALL NOT USE HYDRO-HAMMER TYPE COMPACTORS OVER PIPE TRENCH AREA.

**PRIVATE STREET NOTE:**  
ALL PRIVATE STREETS ARE PUES CLV SEWER ESMT'S. & PUBLIC DRAINAGE ESMT'S. TO BE PRIVATELY MAINTAINED.

SERVICE LATERALS FOR LOTS 20, 25-27, 67-69, 73-77 & 78-88 BLOCKS 1, 3 & 4 WILL BE TAPPED ON EXISTING MAIN BY OWNER'S CONTRACTOR UNDER DIRECTION OF THE LVVWD.

PERMA-BILT HOMES  
7150 POLLOCK DRIVE, SUITE 104  
LAS VEGAS, NEVADA 89119  
(702) 888-9100

CITY OF LAS VEGAS, NEVADA  
2727 SOUTH RAINBOW BOULEVARD LAS VEGAS, NEVADA 89146-5148  
PH. (702) 873-7550 FAX (702) 882-2597

novads  
CONSULTING ENGINEERS • PLANNERS • LAND SURVEYORS

MASTER UTILITY PLAN  
ELKHORN / GRAND CANYON UNIT 2

DESIGNED BY: M.V.P. 06/17/02  
CHECKED BY: M.V.P. 06/17/02  
PROJECT NO.: 35333333  
SCALE: 1"=40' HORIZ. NONE VERT.

EXPIRES 06-30-03

PROFESSIONAL ENGINEER STATE OF NEVADA  
DANIEL A. HARRIS  
72811 10/18/02  
SHEET  
UT2  
6 OF 25 SHEETS  
DRAWING NO.  
3071-4736-2